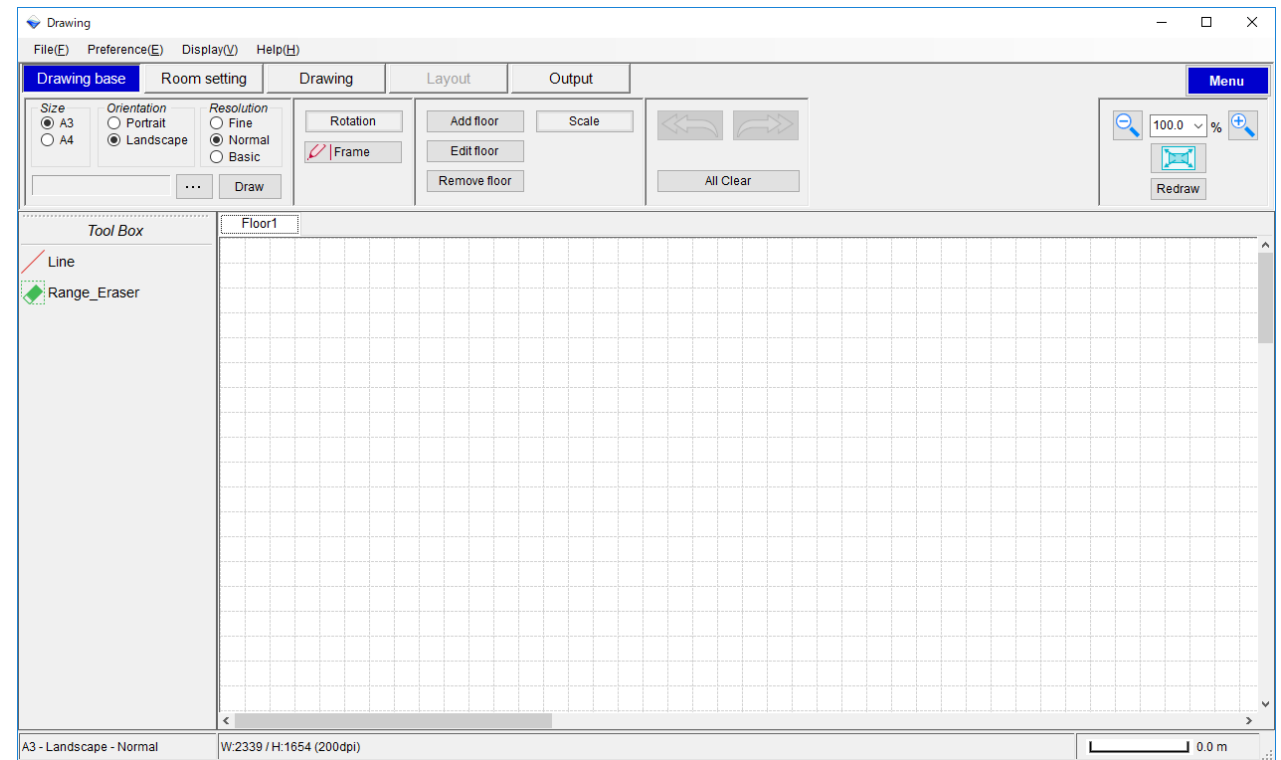
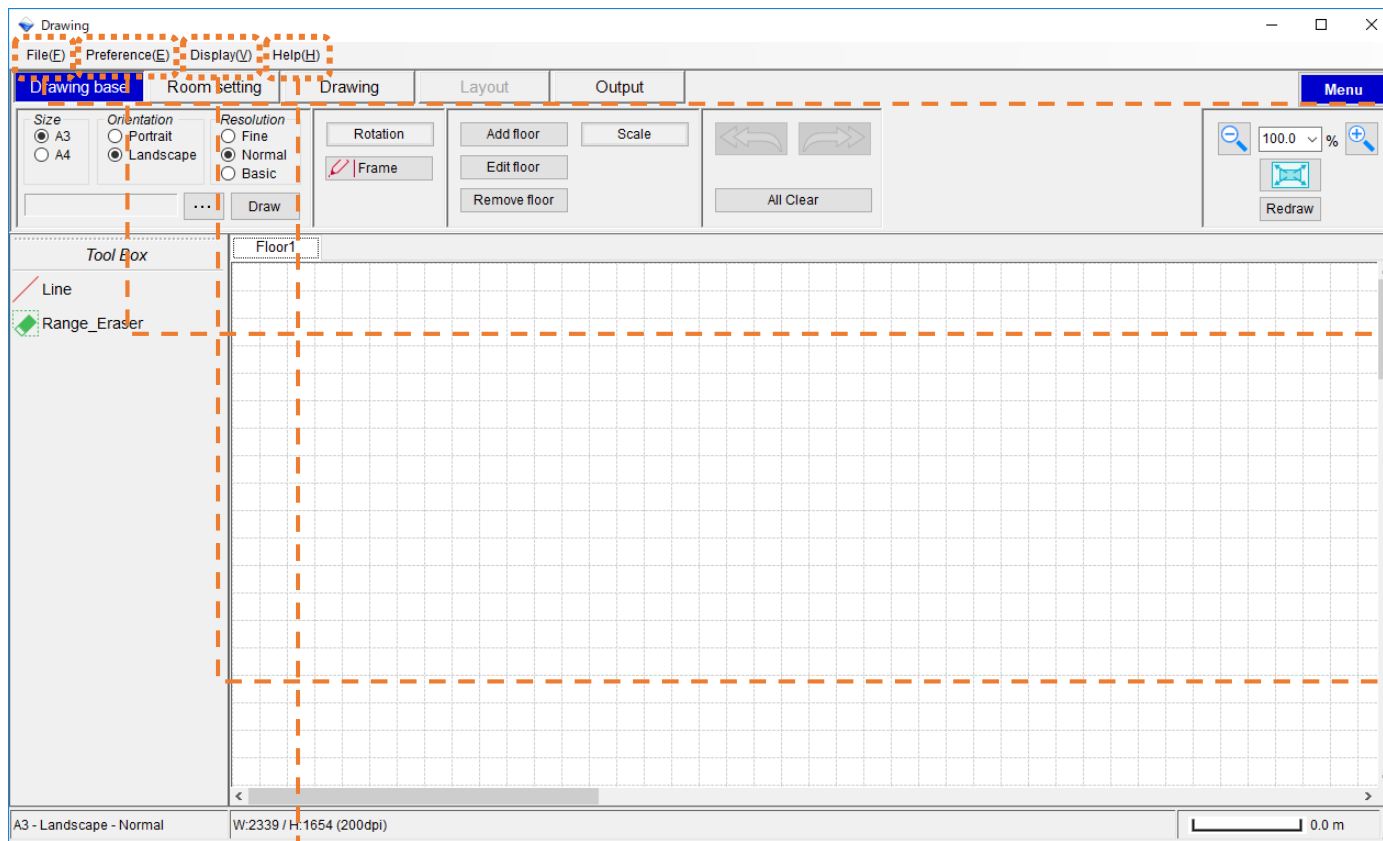


Select "Drawing Design"

Drawing Design screen (Drawing base)







## File

### File(F)

Exit(X)

: Go to menu screen

## Preference

### Preference(E)



Preference

: Refer to "Preference"

## Display

### Display(V)



Display category



Navigation

Refrigerant

Optional parts

Explanatory notes

: Refer to "Display"

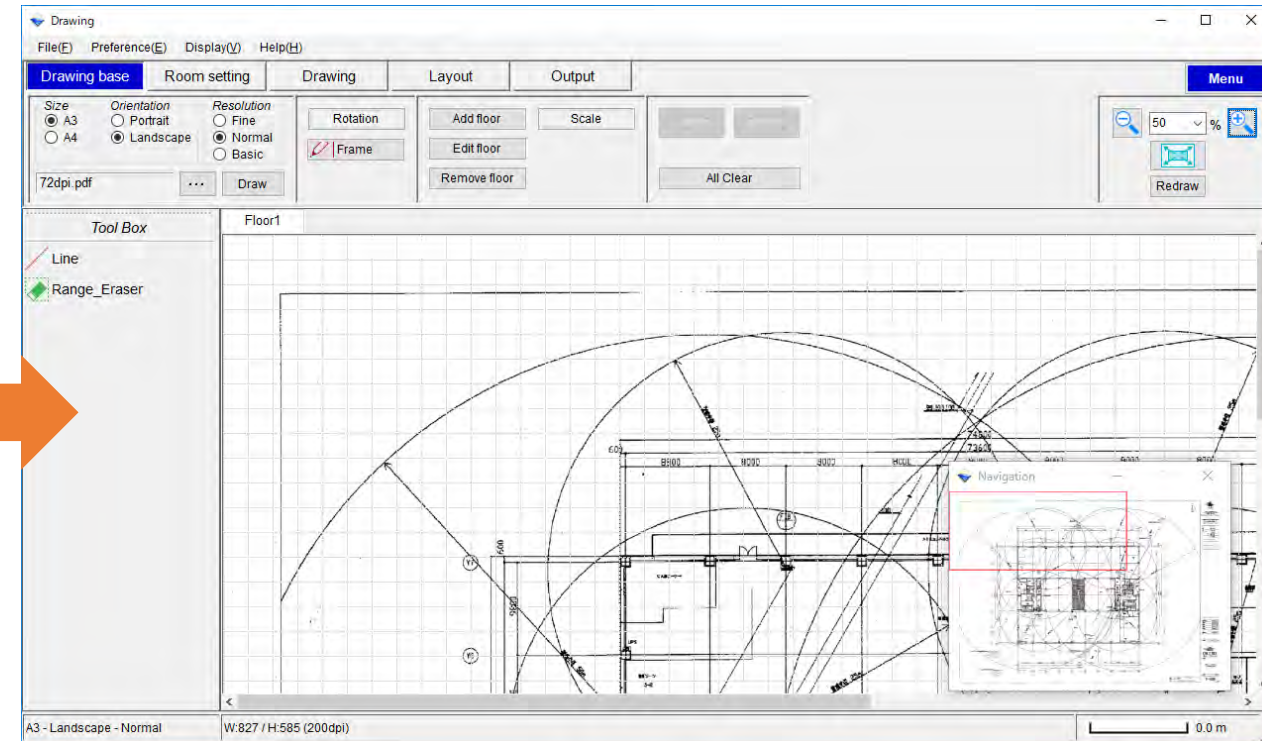
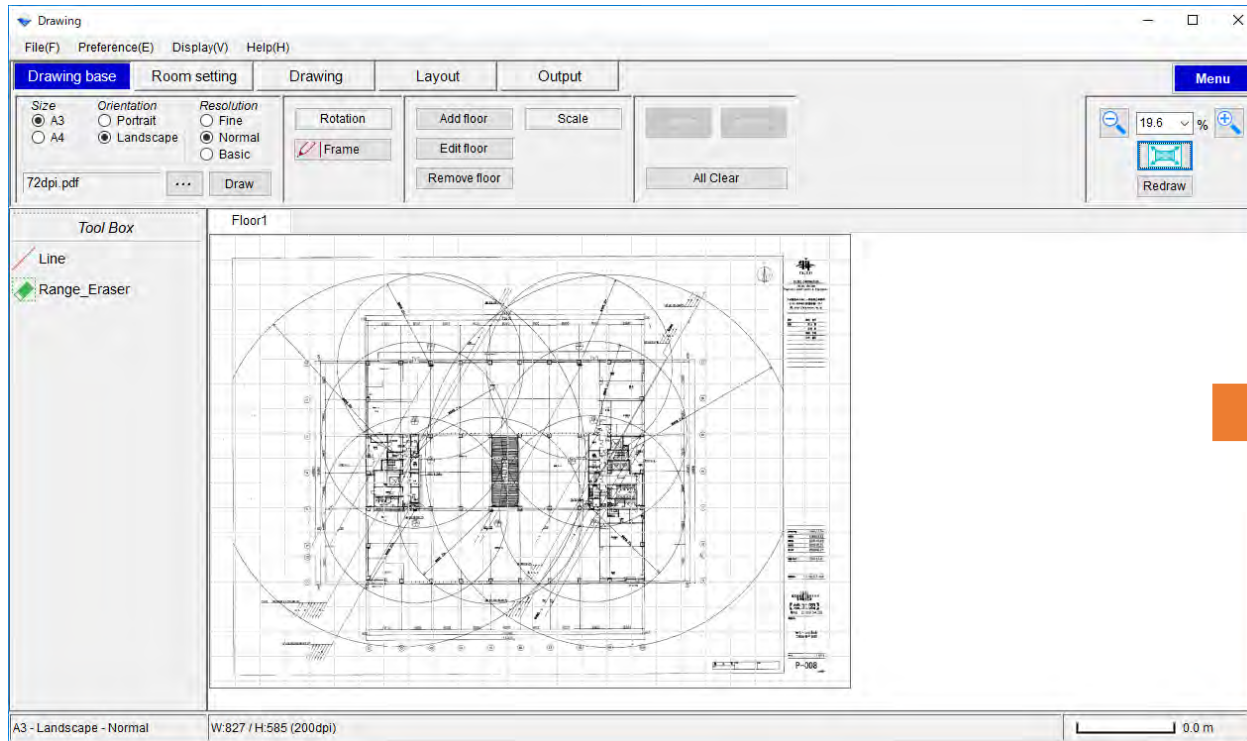
## Help

### Help(H)

Manual

Display Manual

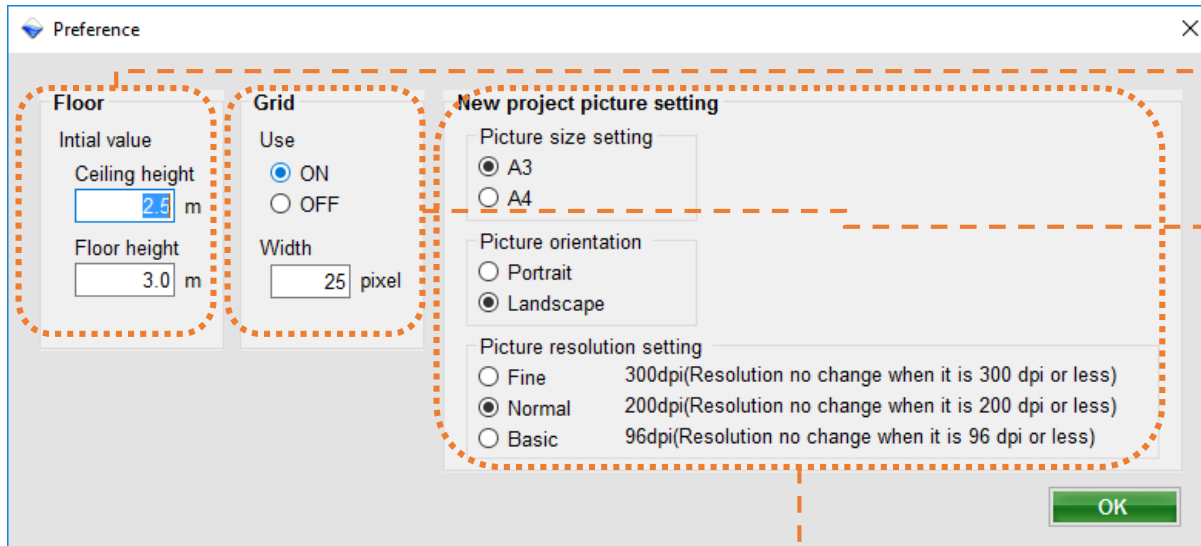




## Navigation screen

When the image does not fit on one screen due to enlargement etc., the navigation screen is displayed and the part displayed on the screen is displayed with a red frame.





## Floor

Sets the initial value of the floor

## Grid

Use : Grid usage setting

Width : Set the width of the grid

## New project picture setting

New project import picture setting

Picture size setting : Set capture size of picture

Picture orientation : Set the orientation of picture

Picture resolution setting : Set picture resolution

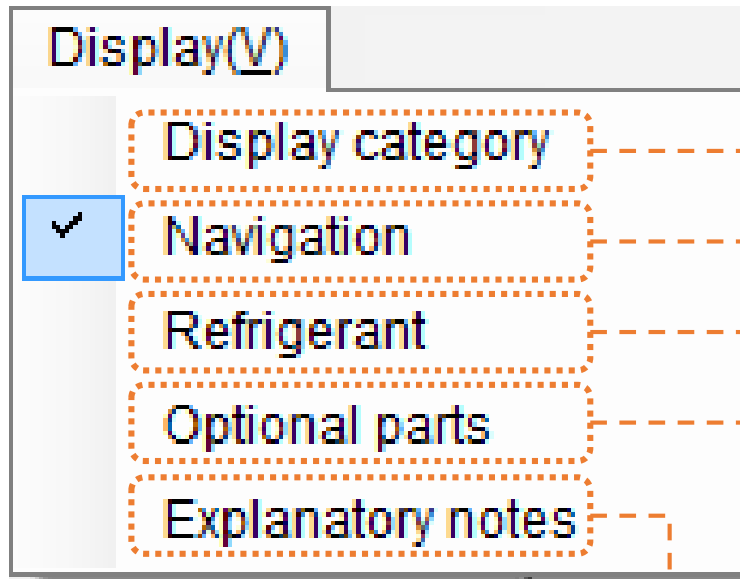
Fine : Capture with resolution equivalent to 300 dpi

Normal : Capture with resolution equivalent to 200dpi

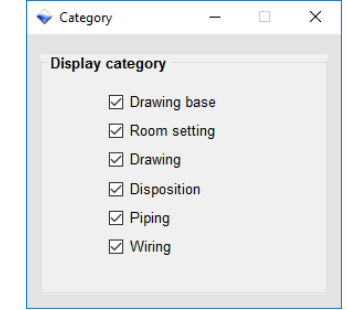
Basic : Capture with resolution equivalent to 96dpi

\* Picture resolution setting is no change,  
when picture resolution or less





Display category screen  
Display category screen  
The selected screen is overlaid and displayed



Navigation  
Display Navigation screen

Refrigerant  
Display list of refrigerant equipment

Name	Model	Capacity	Dimensions	Floor	Room
chert	AQUA0010V	1000W / 1000W	1000mm x 1000mm		
RB1	UTP-RU04BH	-	200x58x28		
Ind1	AUUB10TLAV	180W / 200W	240x80x80		
Ind2	AUUB10TLAV	180W / 200W	240x80x80		
Ind3	AUUB10TLAV	180W / 200W	240x80x80		
Ind4	AUUB10TLAV	180W / 200W	240x80x80		
Ind5	AUUB10TLAV	180W / 200W	240x80x80		
Ch2	AQUA0010V	900W / 1000W	1000mm x 1000mm		
RB1	UTP-RU01BH	-	100x200x58		
Ind6	AUUB10TLAV	180W / 200W	240x80x80		
Ind7	AUUB10TLAV	180W / 200W	240x80x80		
RB3	UTP-RU01AH	-	100x200x58		
Ind8	AUUB10TLAV	180W / 200W	240x80x80		
Ind9	AUUB10TLAV	180W / 200W	240x80x80		

Refrigerant  
Display list of wiring terminal

Explanatory notes

Wiring

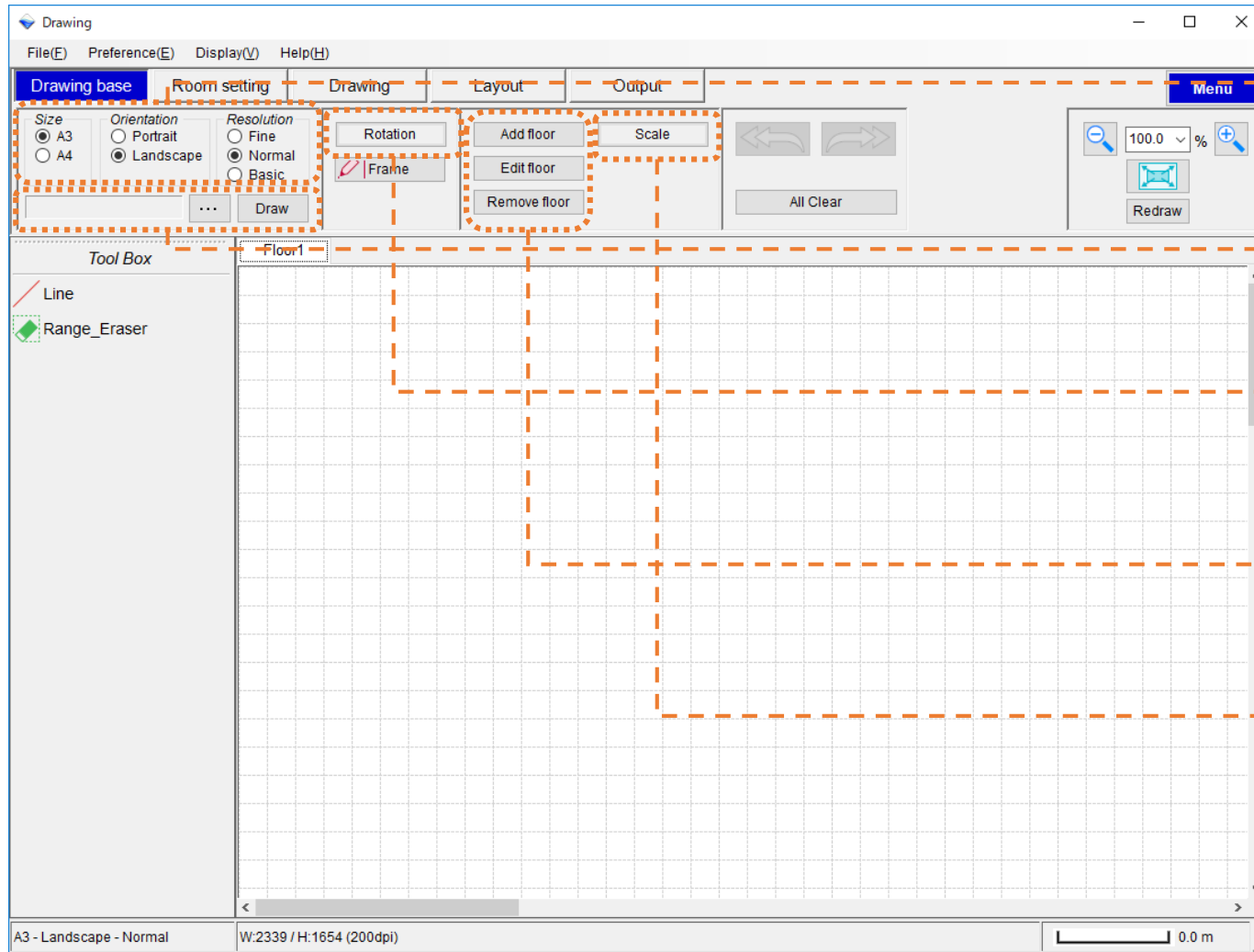
Legend	Line	explain
T	X1,X2	Transmission
T1	1,2,3	Power line and Control line
TA	AB,SGND	Transmission BACNet(Hardware)
TP	1,2,3	Power line
K1	K1,K2,K3	Network Converter
A	1,2,3	2-6Multi Outdoor only Power line
B	1,2,3	2-6Multi Outdoor only Power line
C	1,2,3	2-6Multi Outdoor only Power line
D	1,2,3	2-6Multi Outdoor only Power line

Optional parts  
Display list of Pipe and Branch and RB Unit Models

Optional parts

Pipe(HR)	Pipe(except HR)	RB unit	Branch	Header
Legend	Liquid	Discharge Gas	Suction Gas	
a)	8.35		8.52	
b)	8.35		12.70	
c)	8.35		15.88	
d)	9.52		12.70	
e)	9.52		15.88	
f)	9.52		19.05	
g)	9.52		22.22	
h)	12.70		15.88	





### Picture import setting

- Size : Select the size of the picture
- Orientation : Select orientation a Import in picture
- Resolution : Select the resolution of the picture

### Picture file setting

Refer to "Import picture file "

### Rotation

- Go to Rotation screen
- Refer to "Rotate setting"

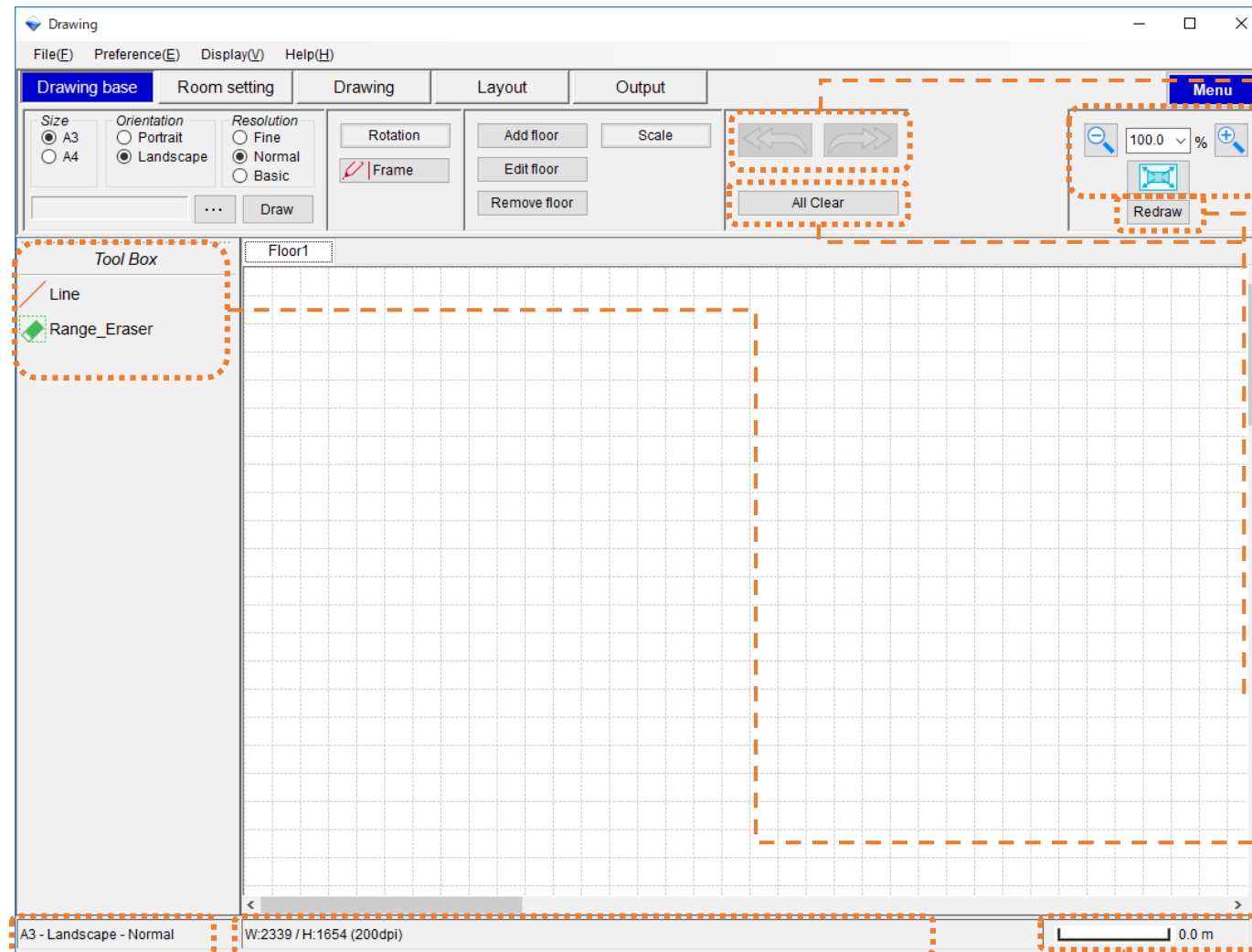
### Floor setting

- Add floor, Remove floor
- Edit floor : Refer to "Floor edit"

### Scale

- Refer to "Scale setting"





Undo , Redo (Tool Box , Scale , Rotation)  
Undo : Cancel the previous object drawing  
Redo : Redraw the previous canceled object

Clear  
Remove picture file and drawing objects

Zoom to  
+ : Zoom up  
- : Zoom down  
100 % : Select zoom  
Full picture display button : Full picture display

Redraw  
Draw the displayed picture again

Tool box  
Line : Draw a line  
Refer to "Tool box (1/2)"  
Range Eraser : Remove parts in a picture  
Refer to "Tool box (2/2)"

Message area


Scale bar

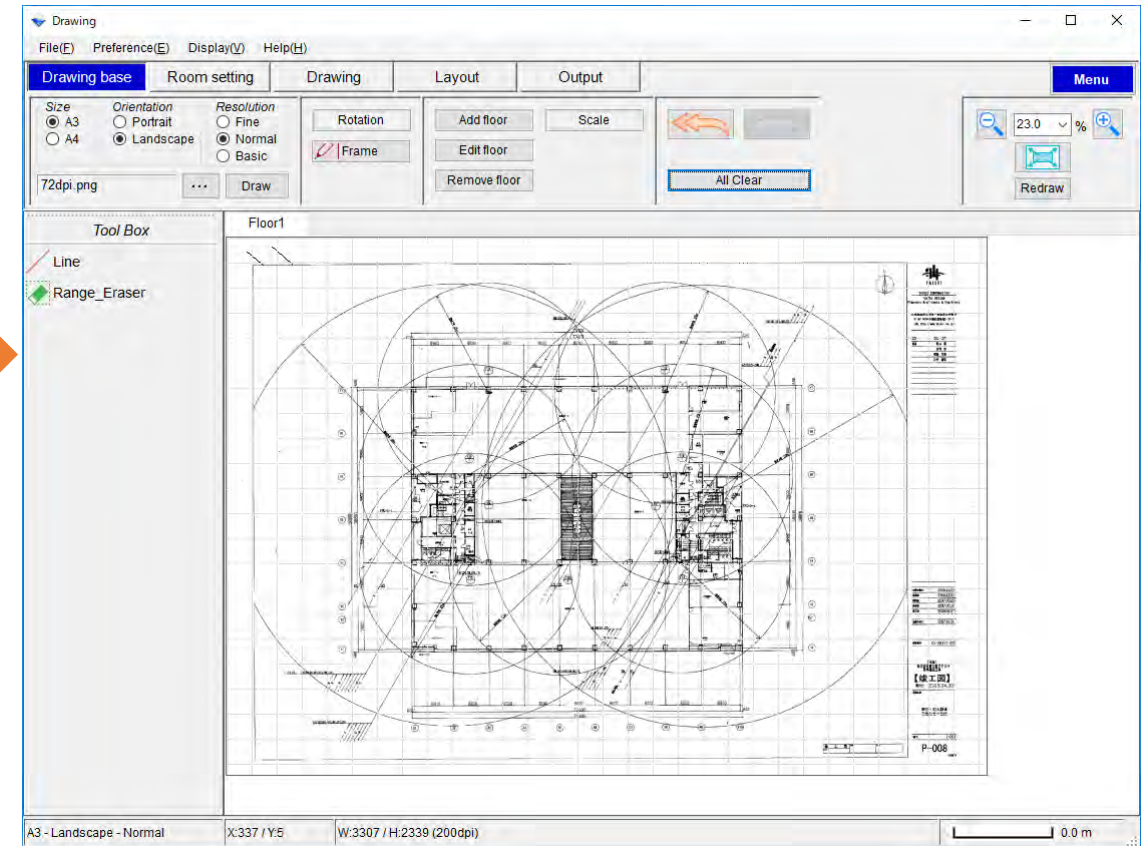
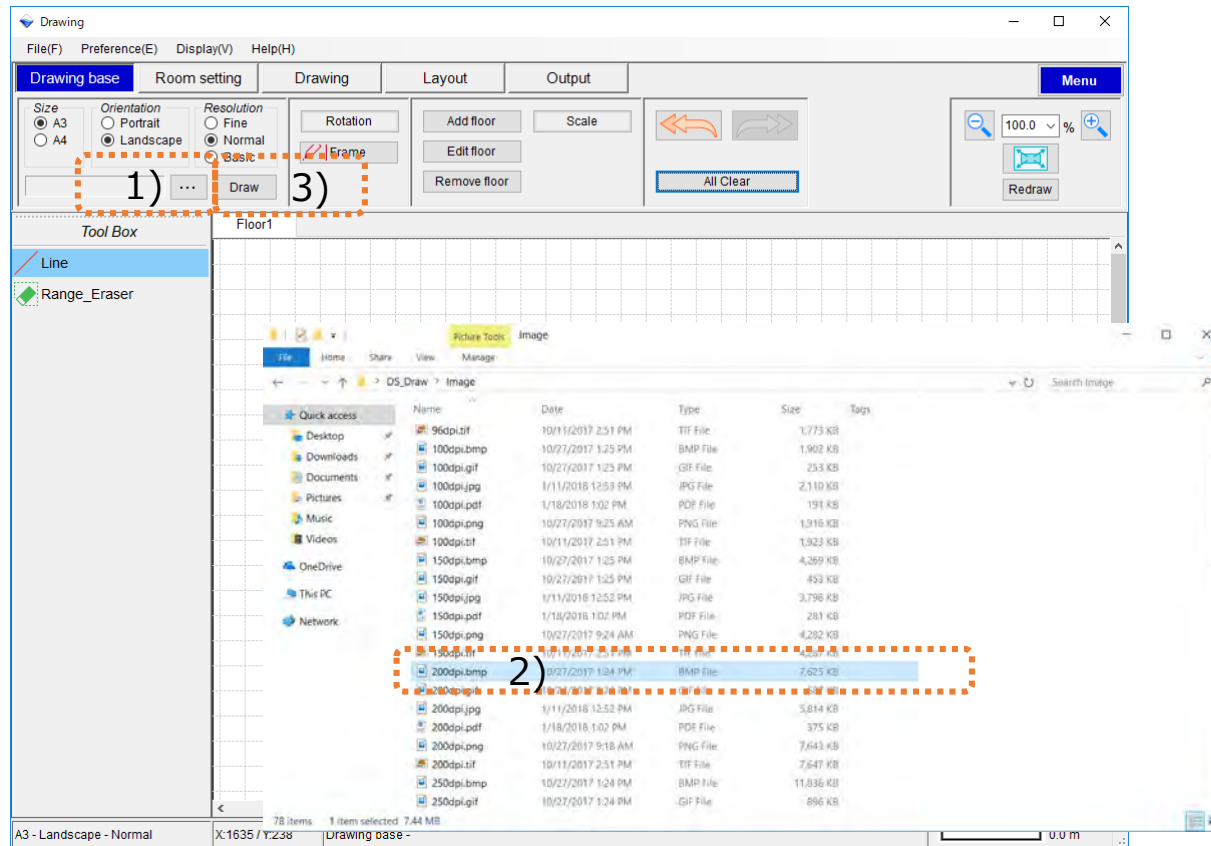
Picture setting  
Size-Orientation-Resolution



# Import picture file (1/2)

### How to import picture file – File selection

- 1) Press  button
- 2) Select picture
- 3) Press Draw

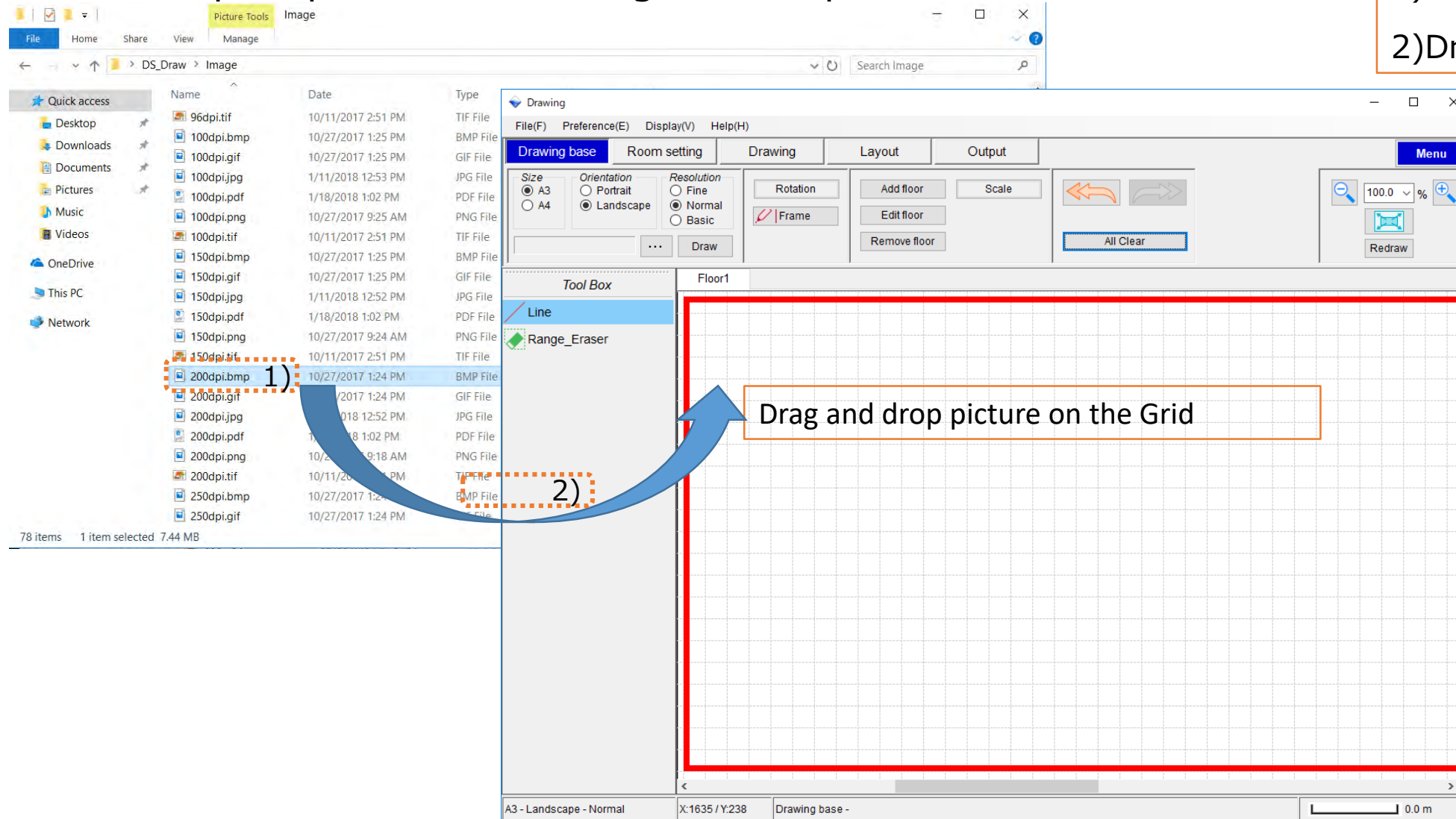




# Import picture file (2/2)

### How to import picture file – Drag and Drop

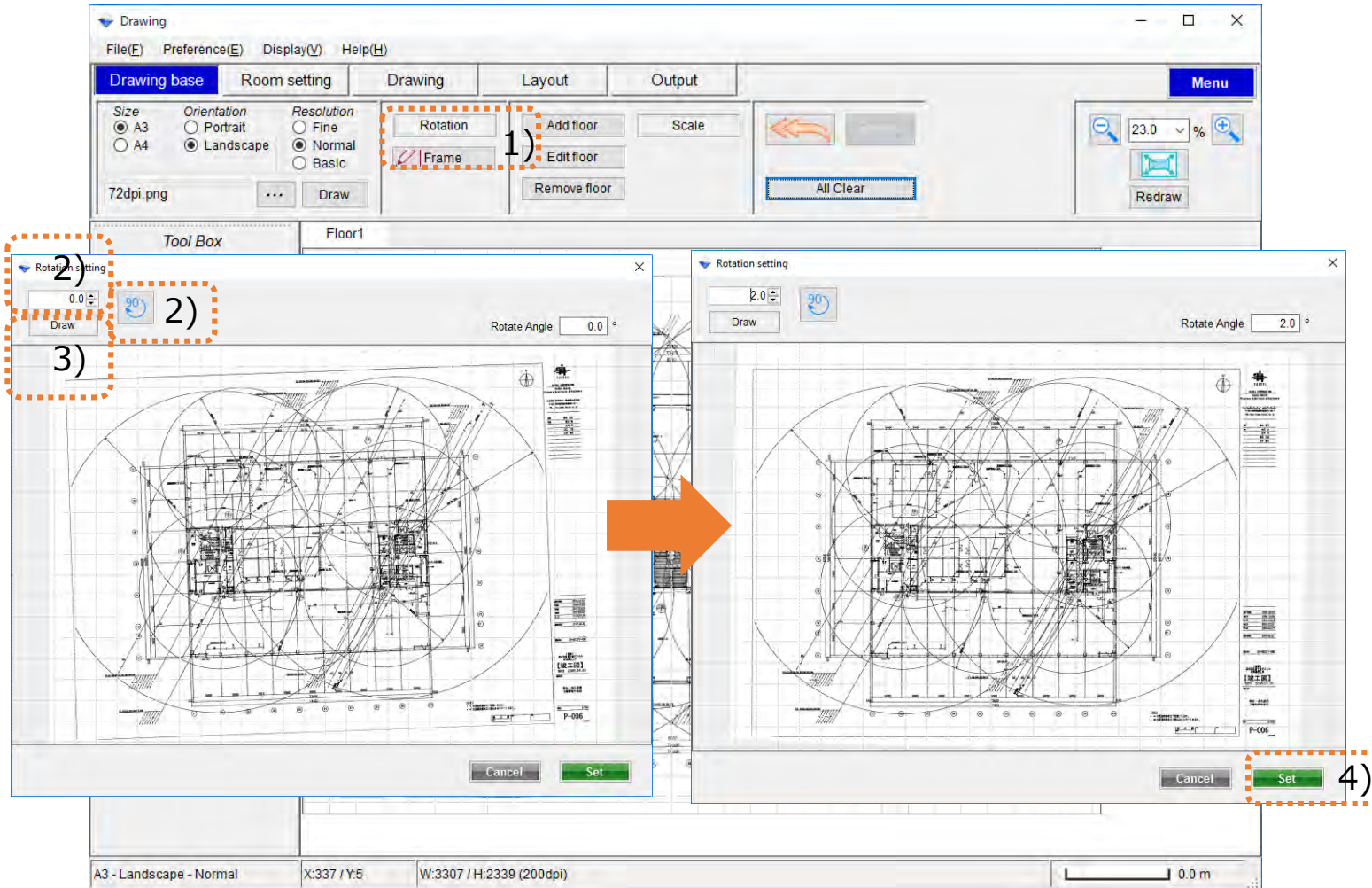
- 1) Select picture file.
- 2) Drag and drop on Grid.






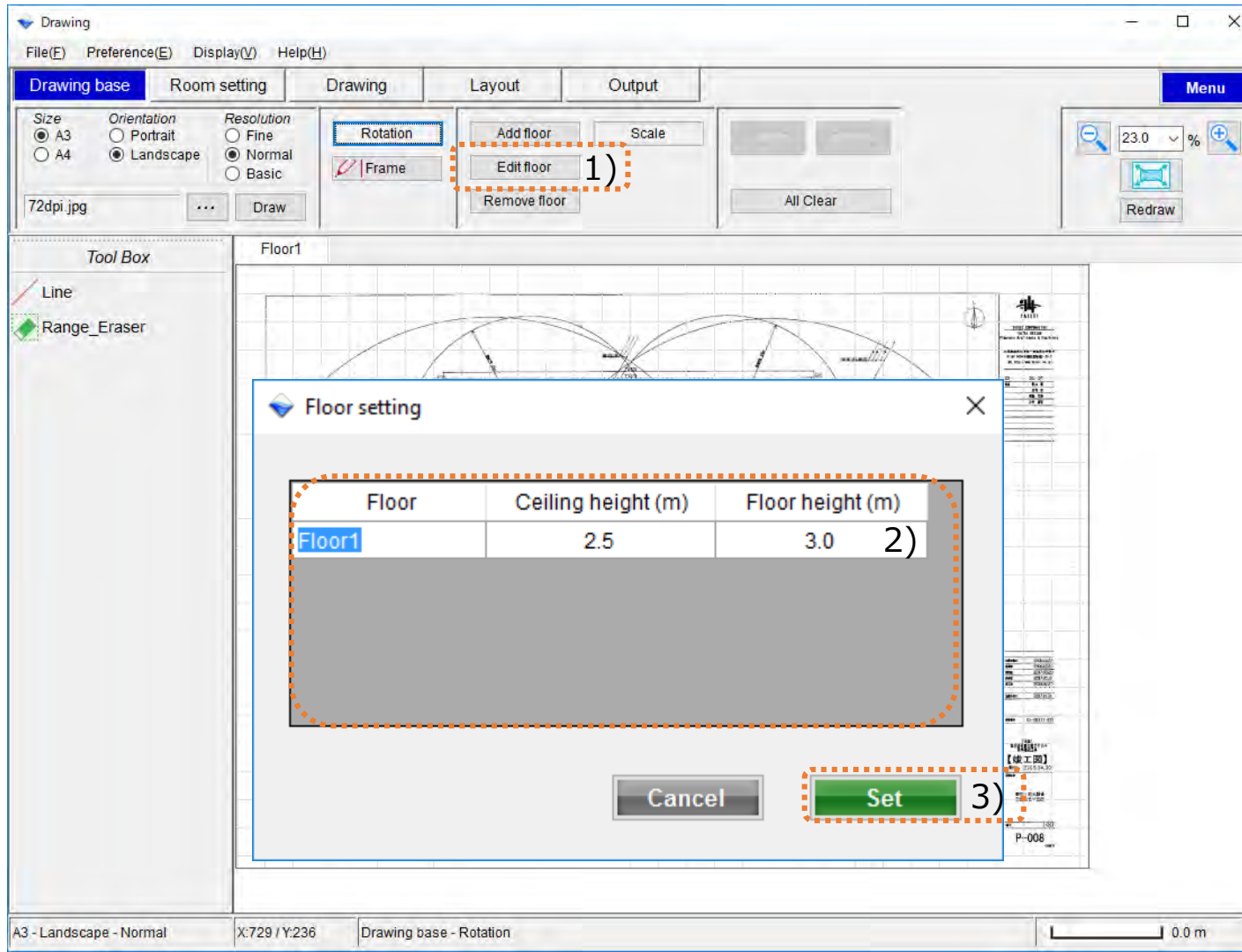
# Rotate setting

### How to rotate picture



- 1) Press Rotation button
- 2) Input the rotation angle (right rotation)  
 Rotate 90 degrees
- 3) Press Draw
- 4) Press Set





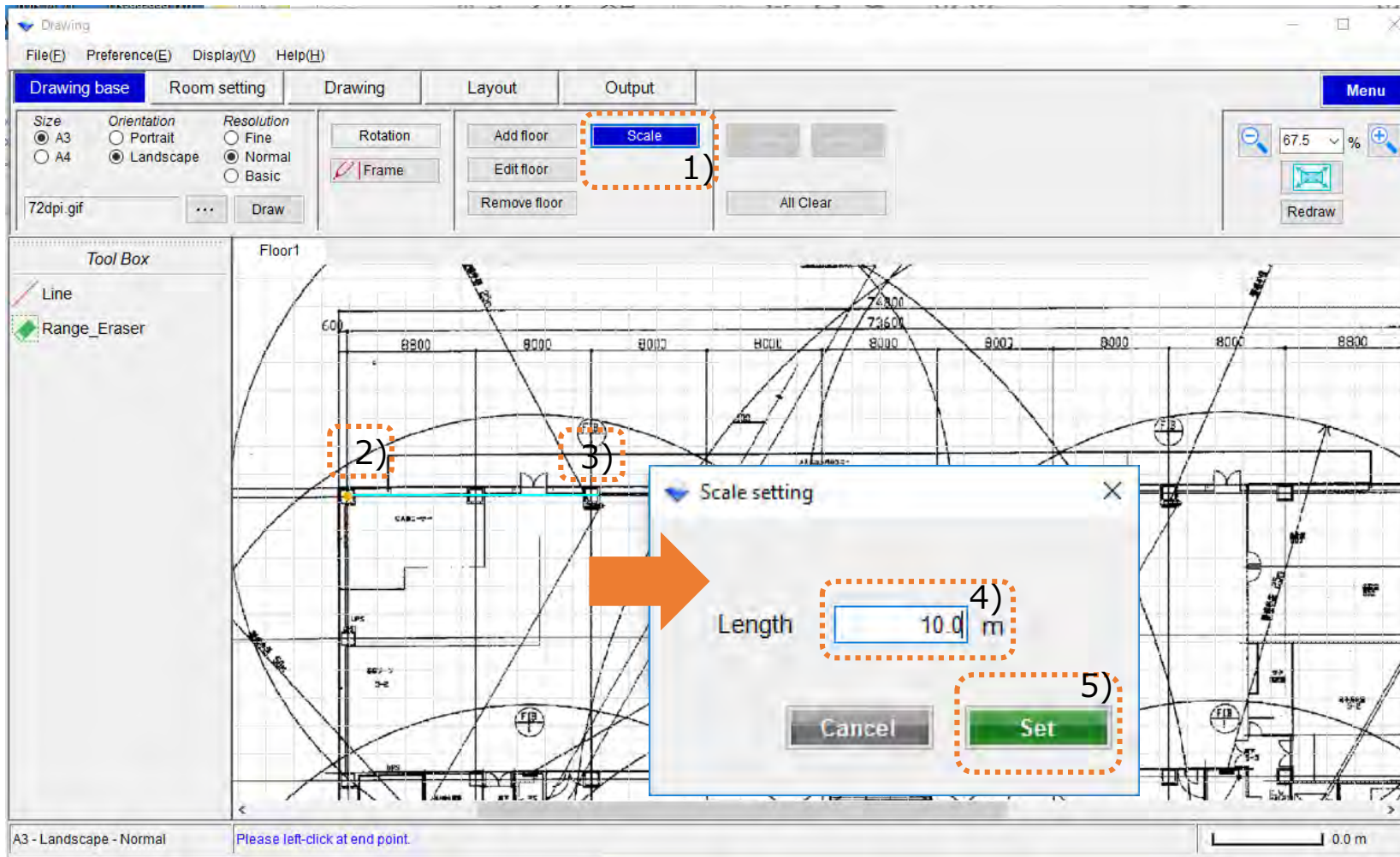
- 1) Press Edit floor
- 2) Input floor list
- 3) Press set

## Floor list

Floor name : Input the floor name  
Ceiling height : Input the ceiling height  
Floor height : Input the floor height

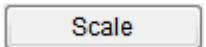


### How to scale setting



1) Select Scale

Not selected scale



Selected scale



2) Left-click at starting point

3) Left-click at end point

4) Input the scale

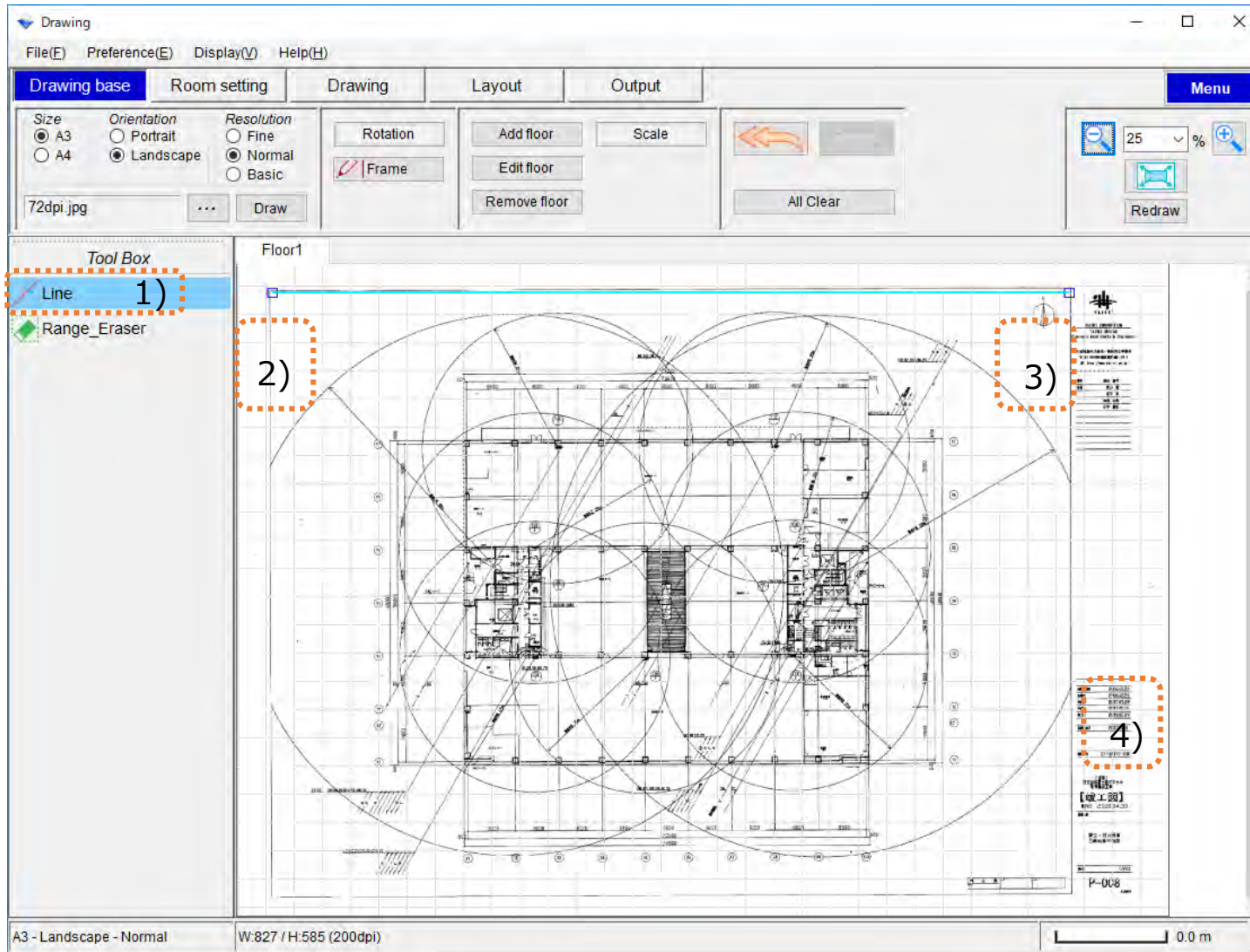
5) Press Tab key

6) Press Set

\*If stop drawing ,Press the Esc button

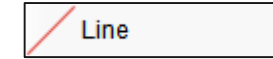


## How to draw line

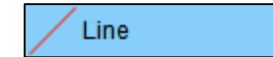


1) Select Line

Not selected Line



Selected Line



2) Left-click at starting point

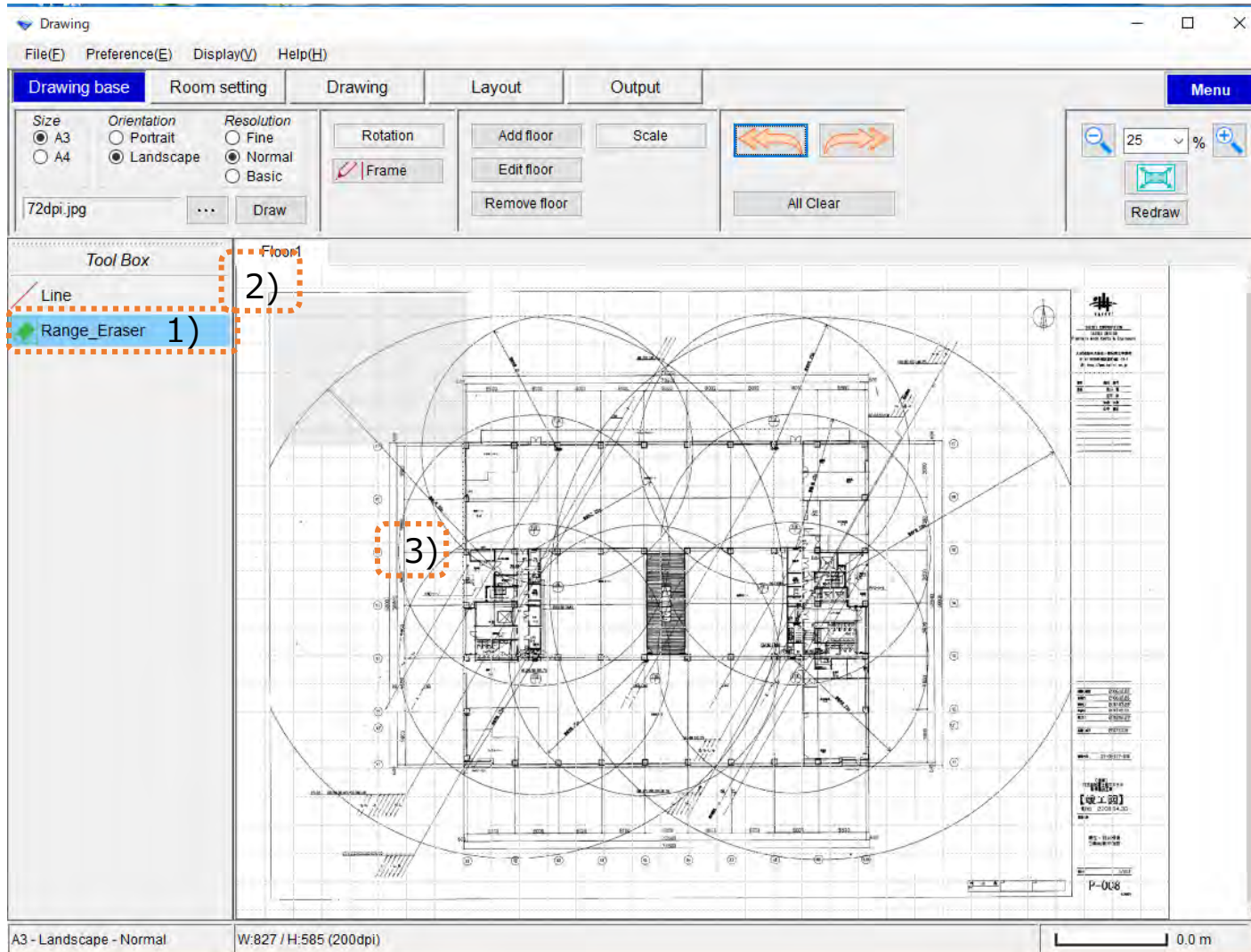
3) Left-click at end point

4) Draw with left-click on the picture

\*If stop drawing ,Press the Esc button

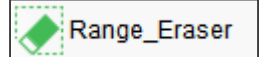


### How to Remove part of picture

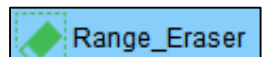


1) Select Range Eraser

Not selected Range eraser



Selected Range Eraser



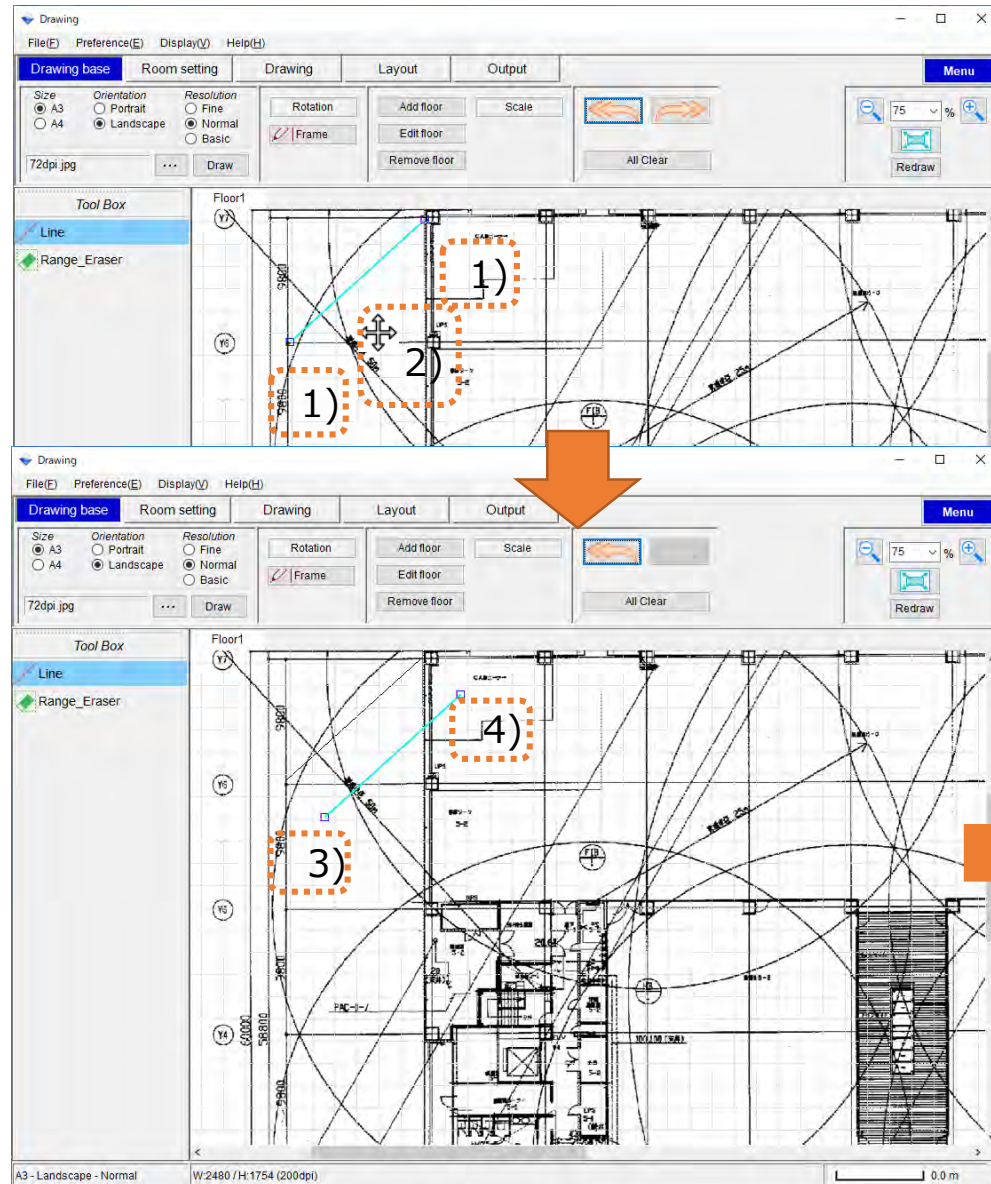
2) Left-click at starting point

3) Drag to end point

\*If stop drawing ,Press the Esc button



## How to move of Line



- 1) Left-Click the start or end point of the Line
- 2) Left-click at Line of center
- 3) Drag to move
- 4) Draw with left-click on the picture

