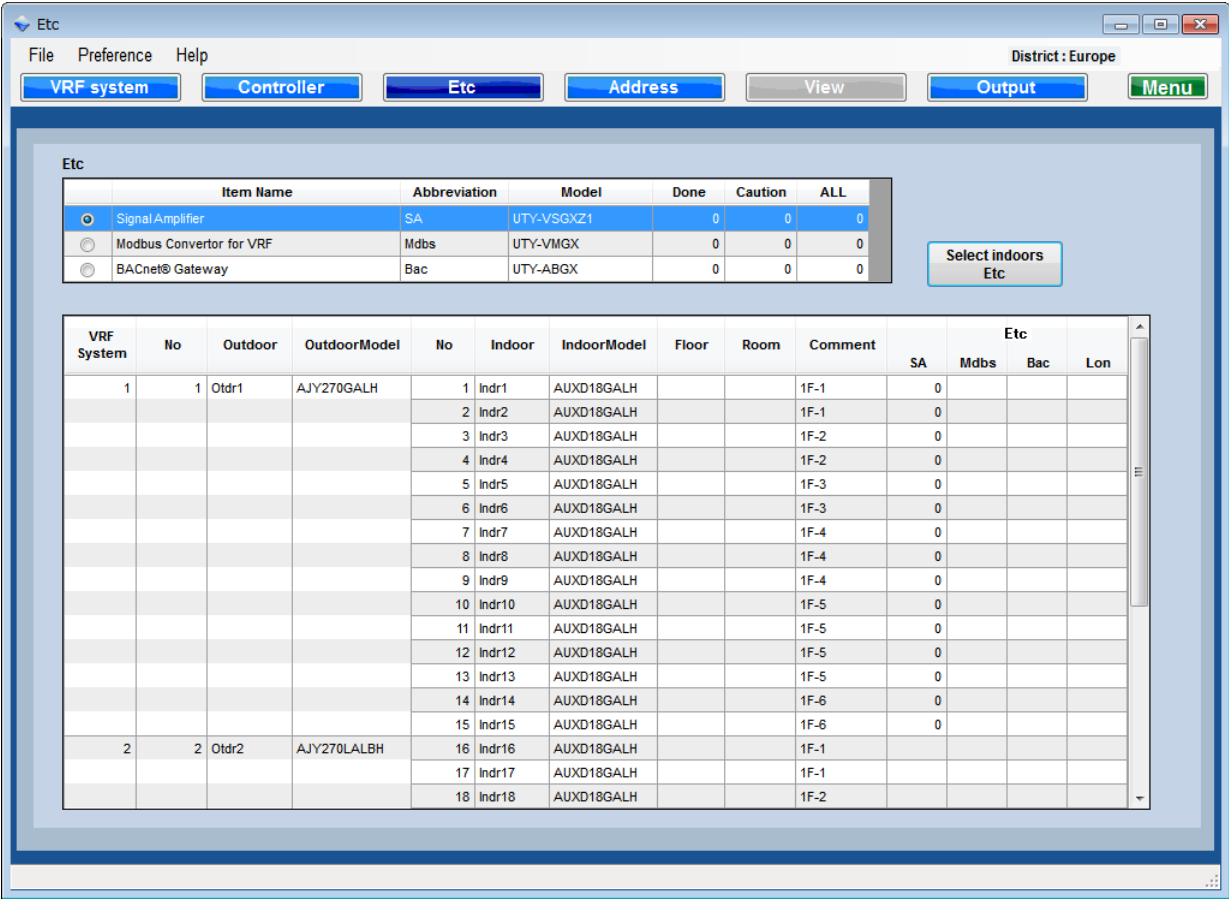
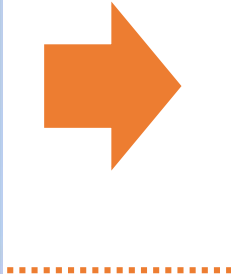
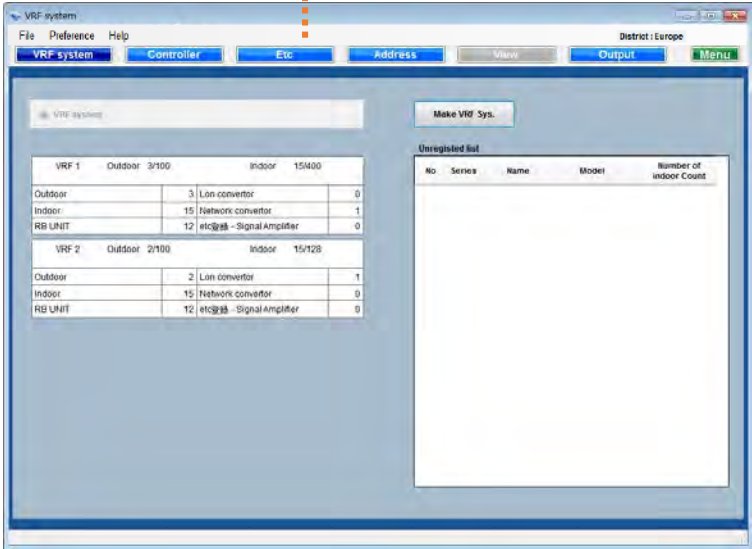


Izaberite “Još podešavanja”

Ekran za još podešavanja



File Preference Help District: Europe

VRF system Controller Etc Address View Output Menu

Etc

| Item Name | Abbreviation | Model | Done | Caution | ALL |
|---|--------------|------------|------|---------|-----|
| <input checked="" type="radio"/> Signal Amplifier | SA | UTY-VSGXZ1 | 0 | 0 | 0 |
| <input type="radio"/> Modbus Converter for VRF | Mdb | UTY-VMGX | 0 | 0 | 0 |
| <input type="radio"/> BACnet® Gateway | Bac | UTY-ABGX | 0 | 0 | 0 |

Select indoors Etc

| VRF System | No | Outdoor | OutdoorModel | No | Indoor | IndoorModel | Floor | Room | Comment | SA | Mdb | Bac | Lon |
|------------|--------|------------|--------------|----|--------|-------------|-------------|------|---------|------------|-----|-----|------|
| 1 | 1 | Otdr1 | AJY270GALH | 1 | Indr1 | AUXD18GALH | | | 1F-1 | 0 | | | |
| | | | | 2 | Indr2 | AUXD18GALH | | | 1F-1 | 0 | | | |
| | | | | 3 | Indr3 | AUXD18GALH | | | 1F-2 | 0 | | | |
| | | | | 4 | Indr4 | AUXD18GALH | | | 1F-2 | 0 | | | |
| | | | | 5 | Indr5 | AUXD18GALH | | | 1F-3 | 0 | | | |
| | | | | 6 | Indr6 | AUXD18GALH | | | 1F-3 | 0 | | | |
| | | | | 7 | Indr7 | AUXD18GALH | | | 1F-4 | 0 | | | |
| | | | | 8 | Indr8 | AUXD18GALH | | | 1F-4 | 0 | | | |
| | | | | 9 | Indr9 | AUXD18GALH | | | 1F-4 | 0 | | | |
| | | | | 10 | Indr10 | AUXD18GALH | | | 1F-5 | 0 | | | |
| | | | | 11 | Indr11 | AUXD18GALH | | | 1F-5 | 0 | | | |
| | | | | 12 | Indr12 | AUXD18GALH | | | 1F-5 | 0 | | | |
| | | | | 13 | Indr13 | AUXD18GALH | | | 1F-5 | 0 | | | |
| | | | | 14 | Indr14 | AUXD18GALH | | | 1F-6 | 0 | | | |
| | | | | 2 | 2 | Otdr2 | AJY270LALBH | 15 | Indr15 | AUXD18GALH | | | 1F-6 |
| 16 | Indr16 | AUXD18GALH | | | | | | | 1F-1 | | | | |
| 17 | Indr17 | AUXD18GALH | | | | | | | 1F-1 | | | | |
| 18 | Indr18 | AUXD18GALH | | | | | | | 1F-2 | | | | |

Lista stavki za još podešavanja (od aprila 2017)

1. Pojačivač signala (Slučaj Auto Address nije korišćen)
2. Modbus konvertor
3. BACnet® prolaz

Idite na ekran za još podešavanja

Lista još podešavanja

VRF mrežni sistem

Izaberite VRF sistem koji će biti prikazan

Auto povezivanje

Automatski izaberite jedinicu

Promenite vrstu sortiranja jedinice

- 1.Spoljna-Unutrašnja-Kontroler
- 2.Spoljna-Kontroler-Unutrašnja

Uslovi povezivanja

Dodajte pojačivač signala

Izbrišite pojačivač signala

Gore i dole

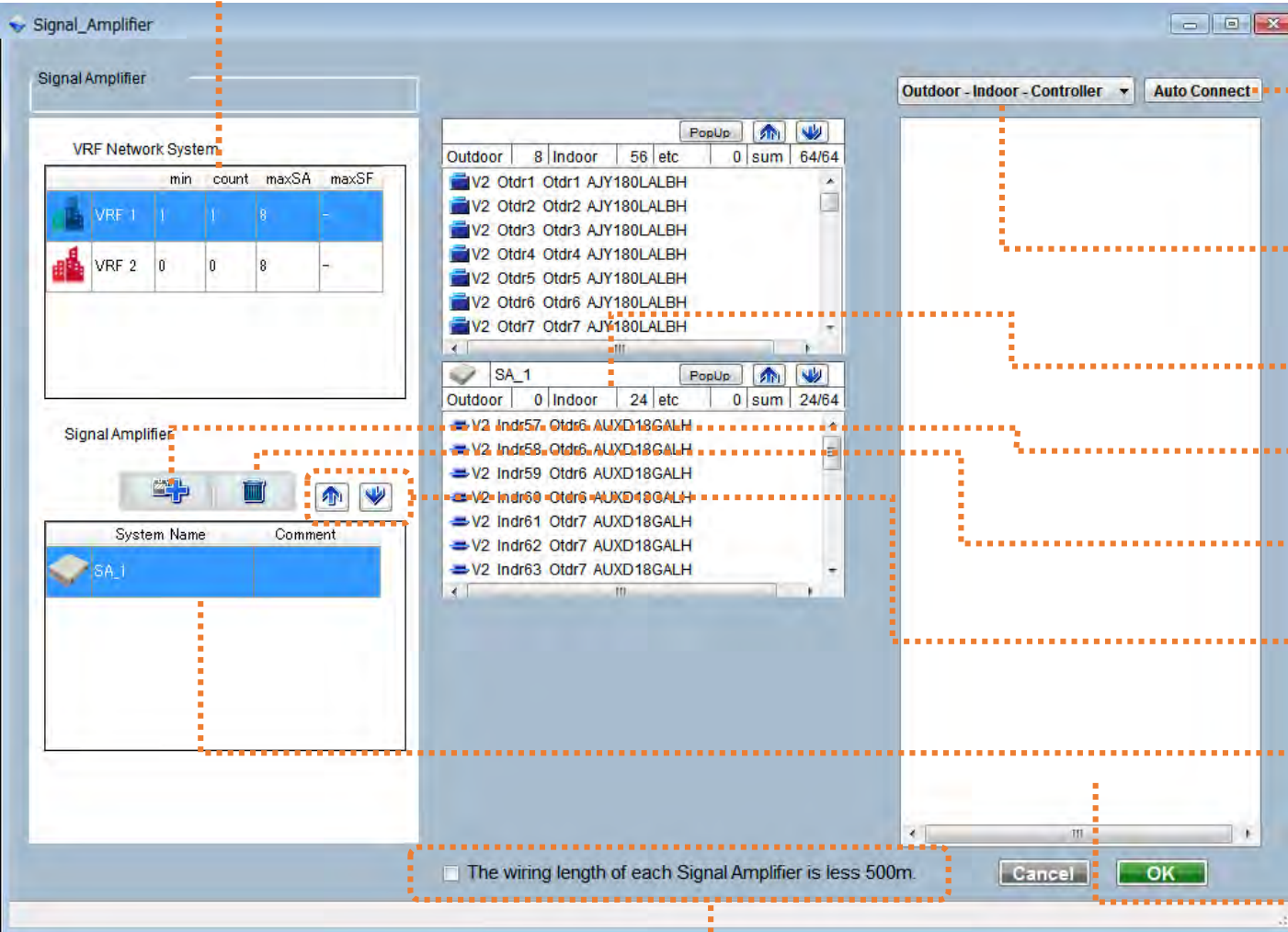
Prikaži redosled segmenata

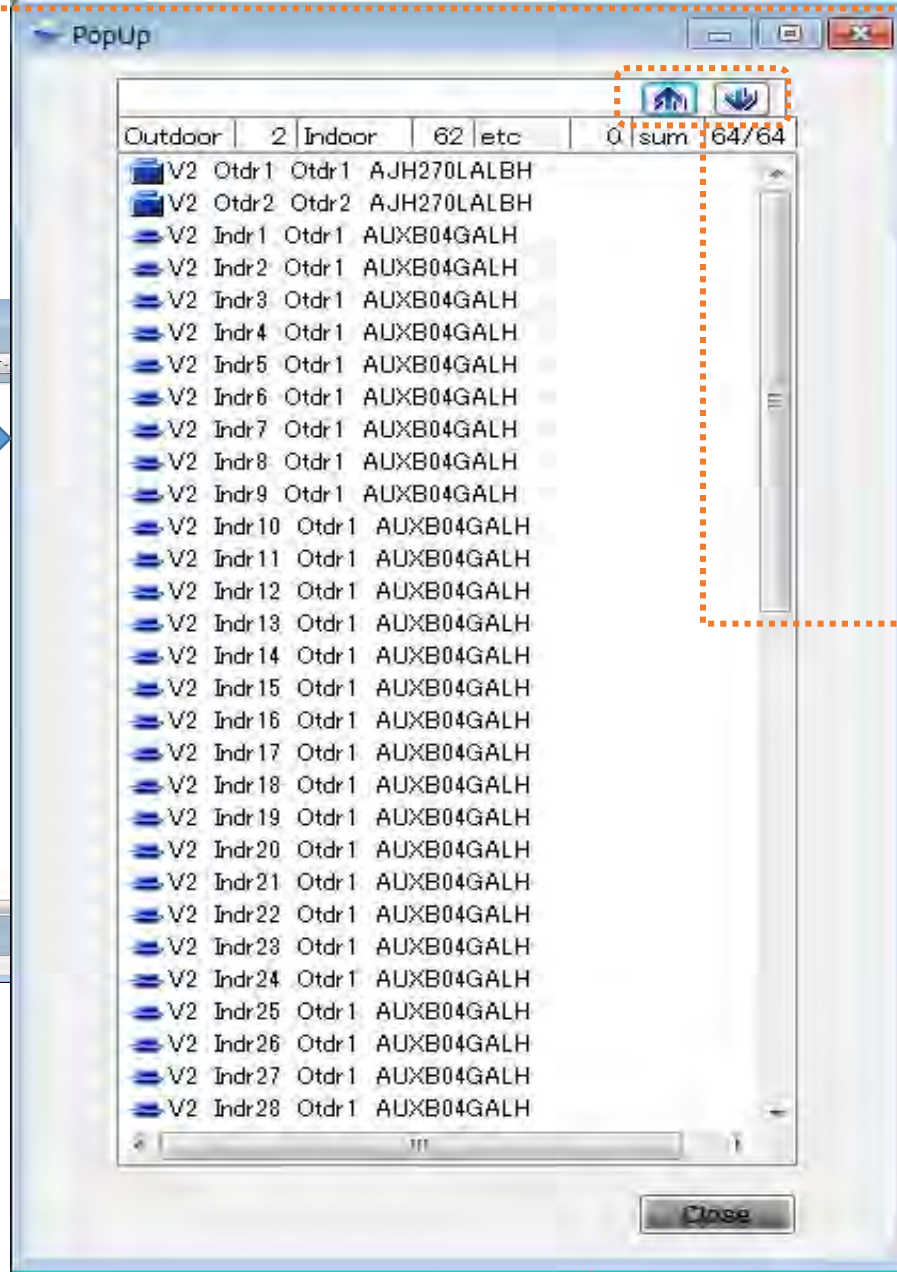
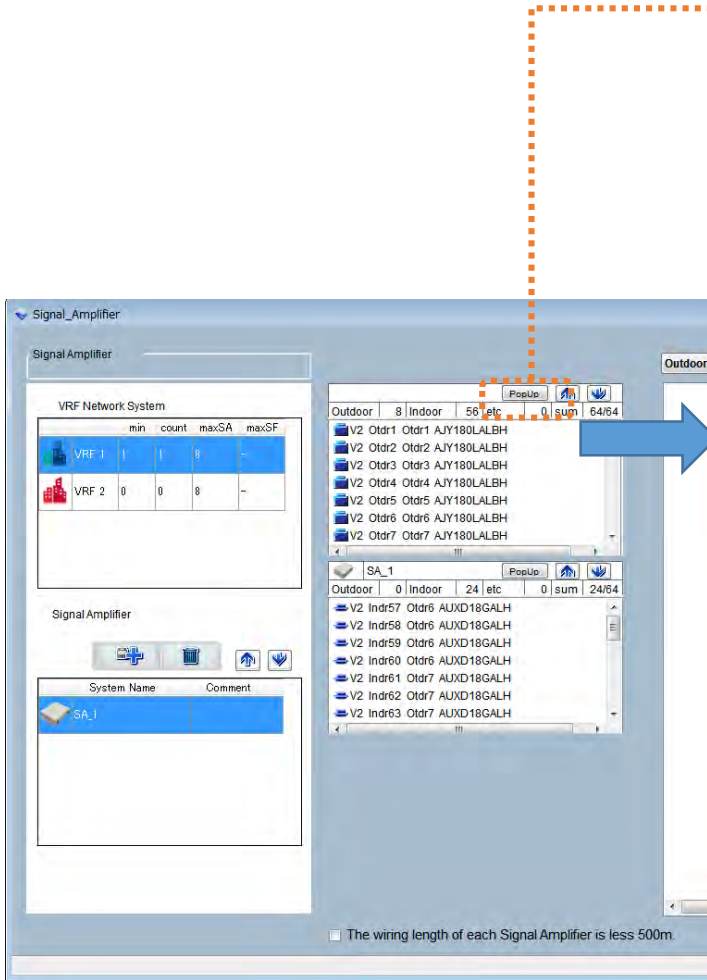
Lista pojačivača signala

Ine sistema: Ime pojačivača signala
Komentar : Komentar

Lista neregistrovanih jedinica

Potvrdite dužinu svakog segmenta



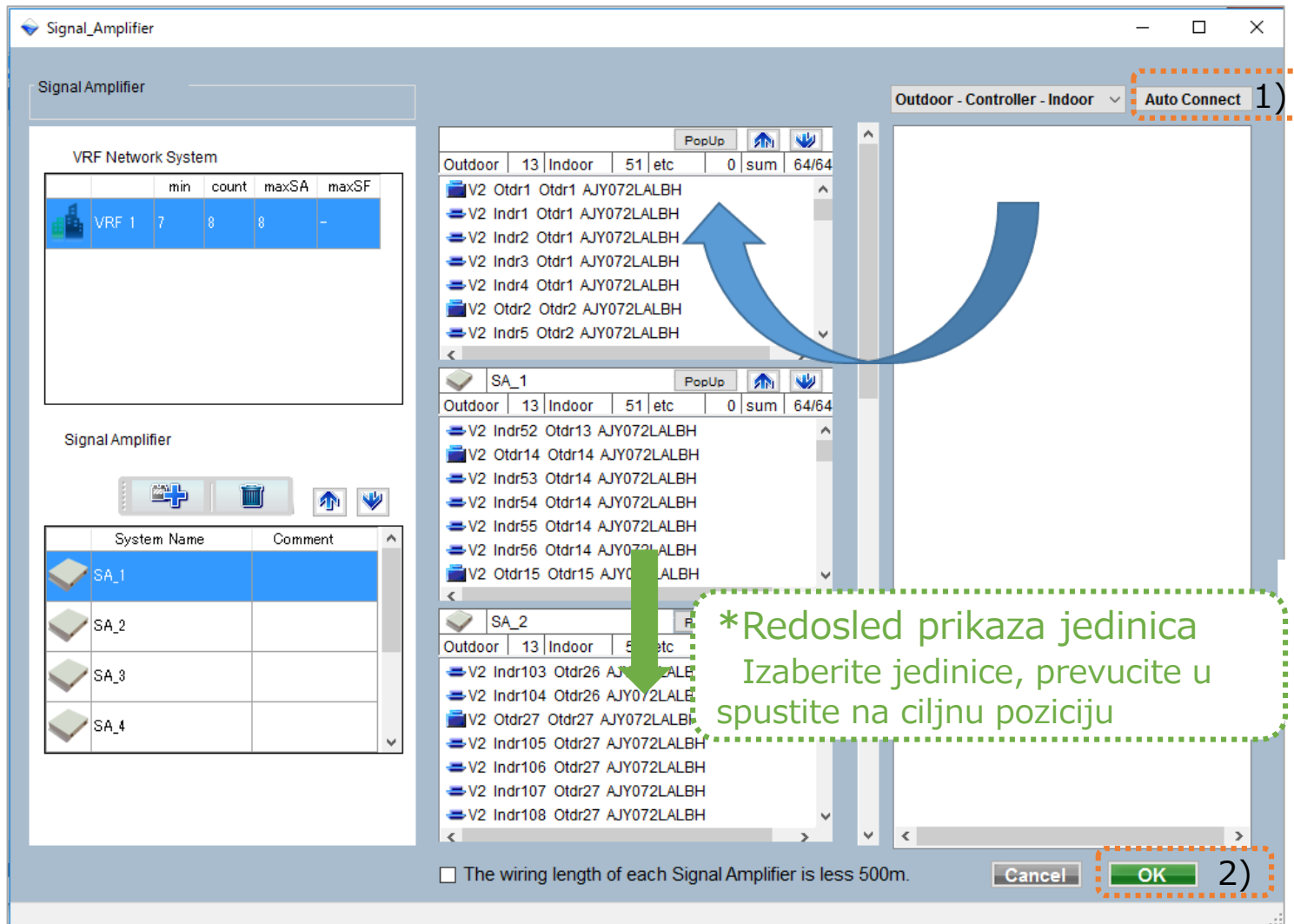


PopUp
Idite na prozor koji se pojavi

Gore i dole
Redosled prikaza jedinica

Još podešavanja - Pojačivač signala (3/4)

Slučaj1 – Automatsko podešavanje



1)Auto povezivanje

Automatski registruje 64 jedinice za svaki segment

2)OK

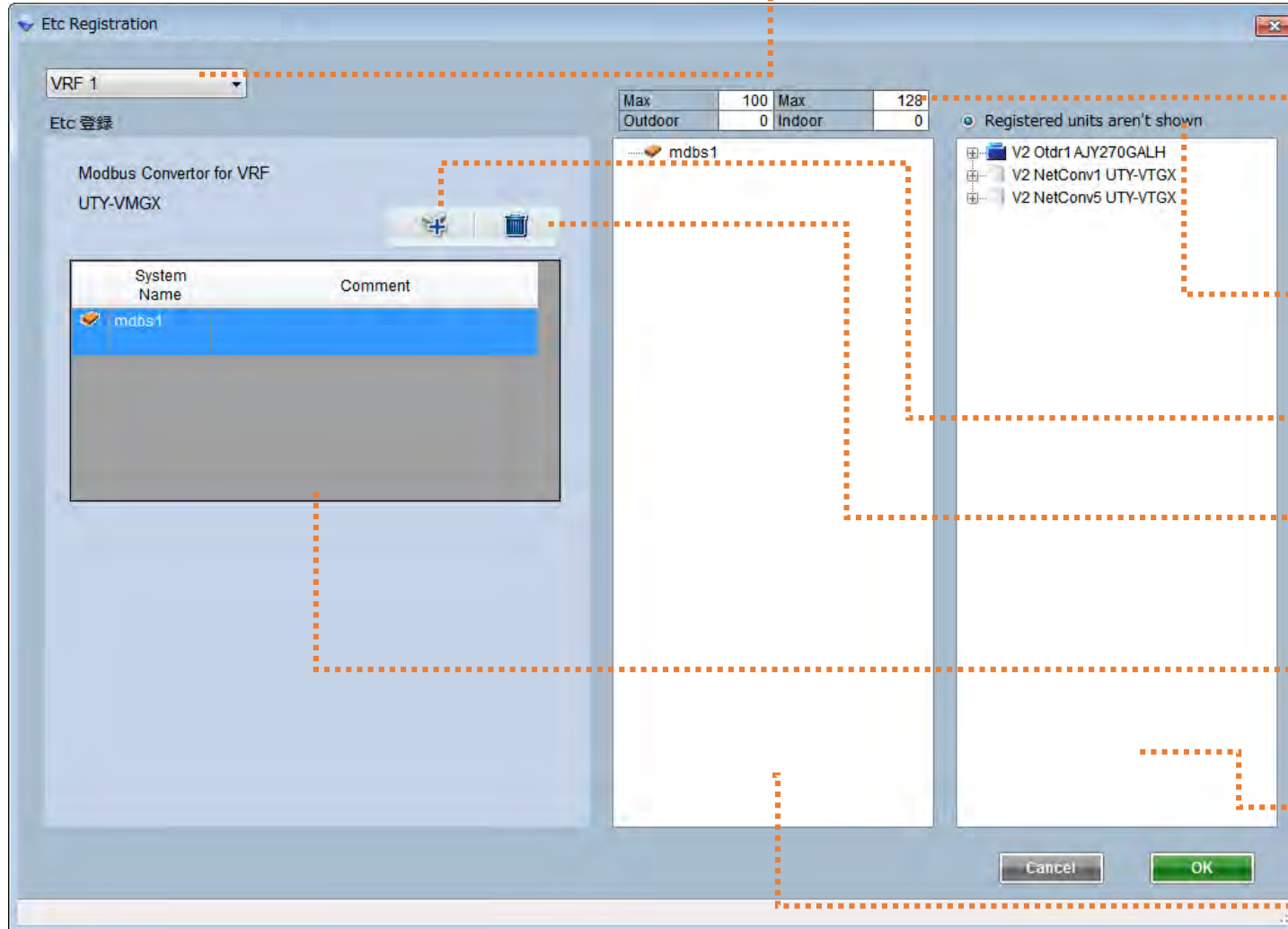
Slučaj2 – Ručno podešavanje

The screenshot shows the 'Signal Amplifier' configuration window. It includes a 'VRF Network System' section with a table of VRF units, a 'Signal Amplifier' section with a list of amplifiers, and a central area with two lists of units (Outdoor and Indoor) for assignment. Annotations are as follows:

- 1)** Points to the 'VRF 1' entry in the 'VRF Network System' table.
- 2)** Points to the '+' icon in the 'Signal Amplifier' section.
- 3)** Points to a unit in the 'Outdoor' list.
- 4)** Points to the 'OK' button at the bottom right.

A green dashed box with a green arrow points to the 'Indoor' list, containing the text:
*Redosled prikaza jedinica
Izaberite jedinice, prevucite u
spustite na ciljnu poziciju

- 1) Izaberite VRF mrežni sistem
- 2) Dodajte pojačivač signala
- 3) Izaberite jedinice, prevucite u spustite na ciljnu poziciju
- 4) OK



VRF Sistem

Izaberite VRF sistem koji će biti prikazan

Uslovi za konekciju Modbus konvertora

Izabrane jedinice nisu prikazane

Izabrane jedinice se ne prikazuju čekiranjem

Dodajte Modbus Konvertor

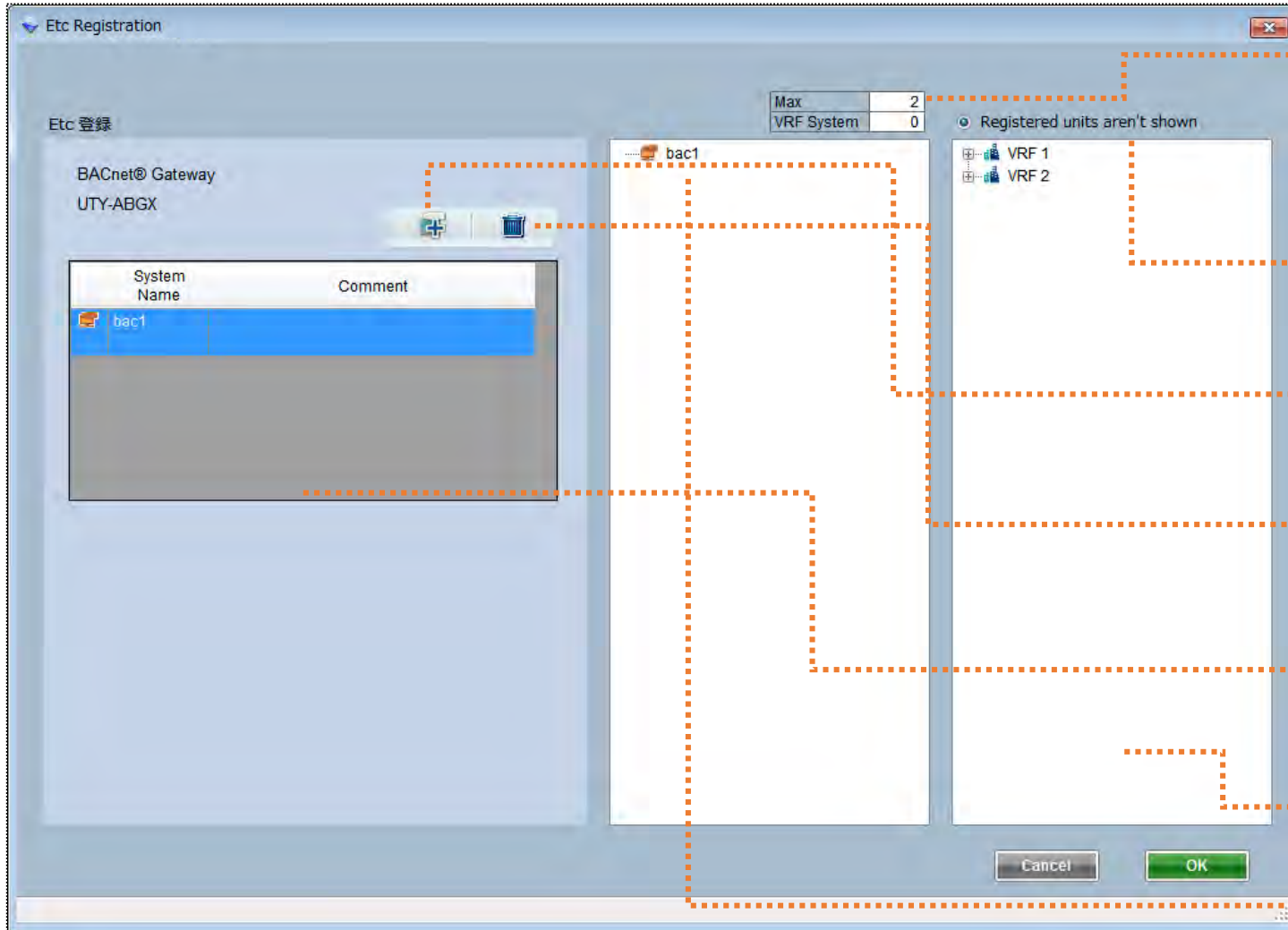
Izbrišite Modbus Konvertor

Lista za Modbus konvertor

Ime sistema: Ime Modbus Konvertora
Komentar : Komentar

Lista neizabranih jedinica

Lista izabranih jedinica



Uslovi za podešavanje Modbus Konvertora

Izabrane jedinice nisu prikazane
Izabrane jedinice se ne prikazuju čekiranjem

Izaberite BACnet® prolaz

Izbrišite BACnet® prolaz

Lista za Modbus Konvertor
Ime sistema: Ime Modbus Konvertora
Komentar : Komentar

Lista neizabranih jedinica

Lista izabranih jedinica