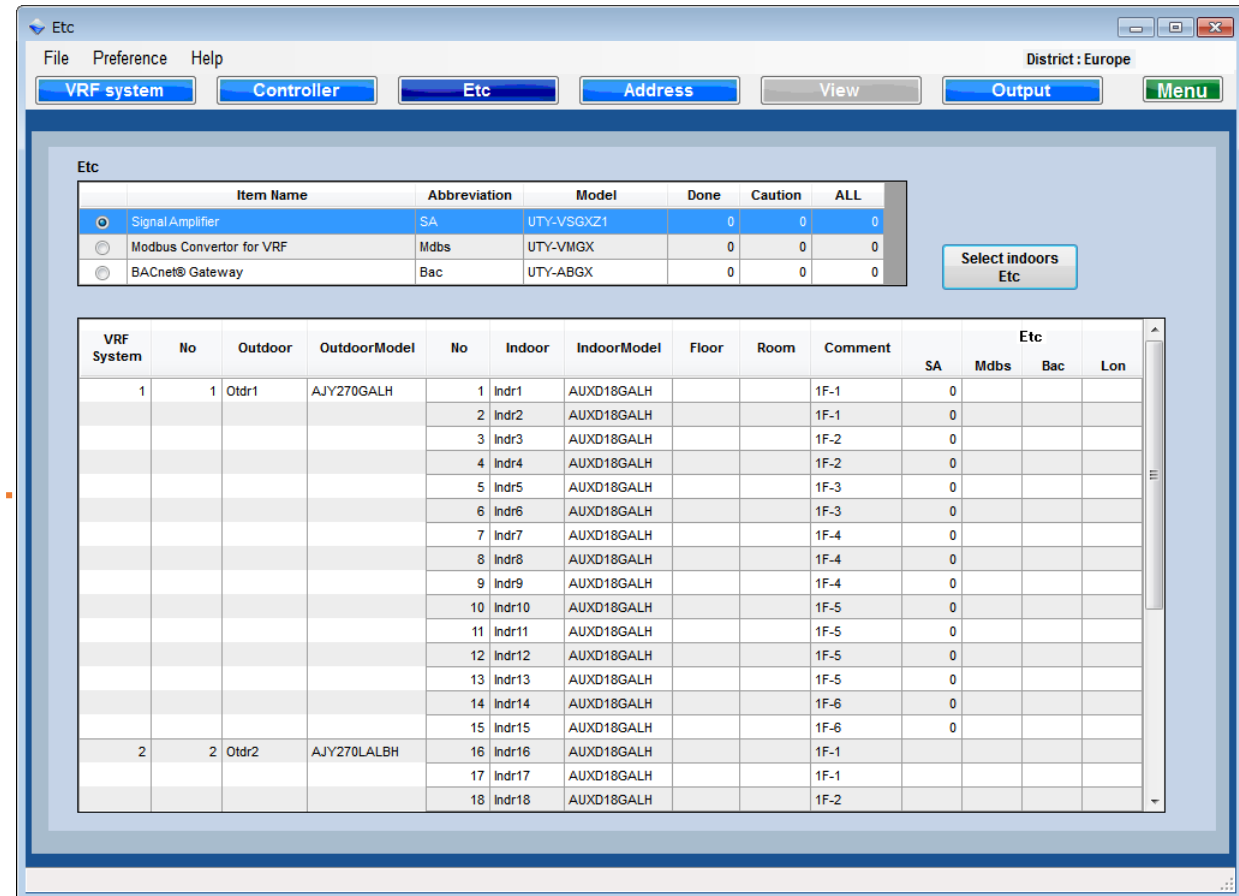
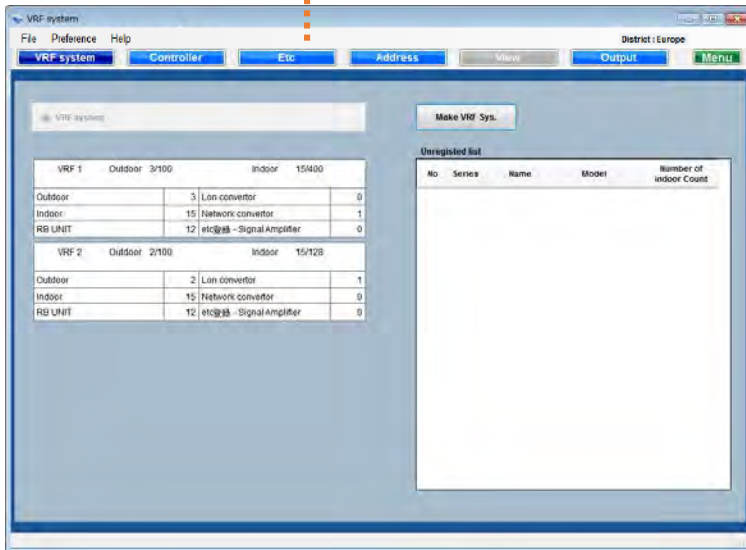


Select "Etc"

Etc screen



Etc

File Preference Help District: Europe

VRF system Controller **Etc** Address View Output Menu

Item Name	Abbreviation	Model	Done	Caution	ALL
<input checked="" type="radio"/> Signal Amplifier	SA	UTY-VSGXZ1	0	0	0
<input type="radio"/> Modbus Convertor for VRF	Mdb	UTY-VMGX	0	0	0
<input type="radio"/> BACnet® Gateway	Bac	UTY-ABGX	0	0	0

Select indoors Etc

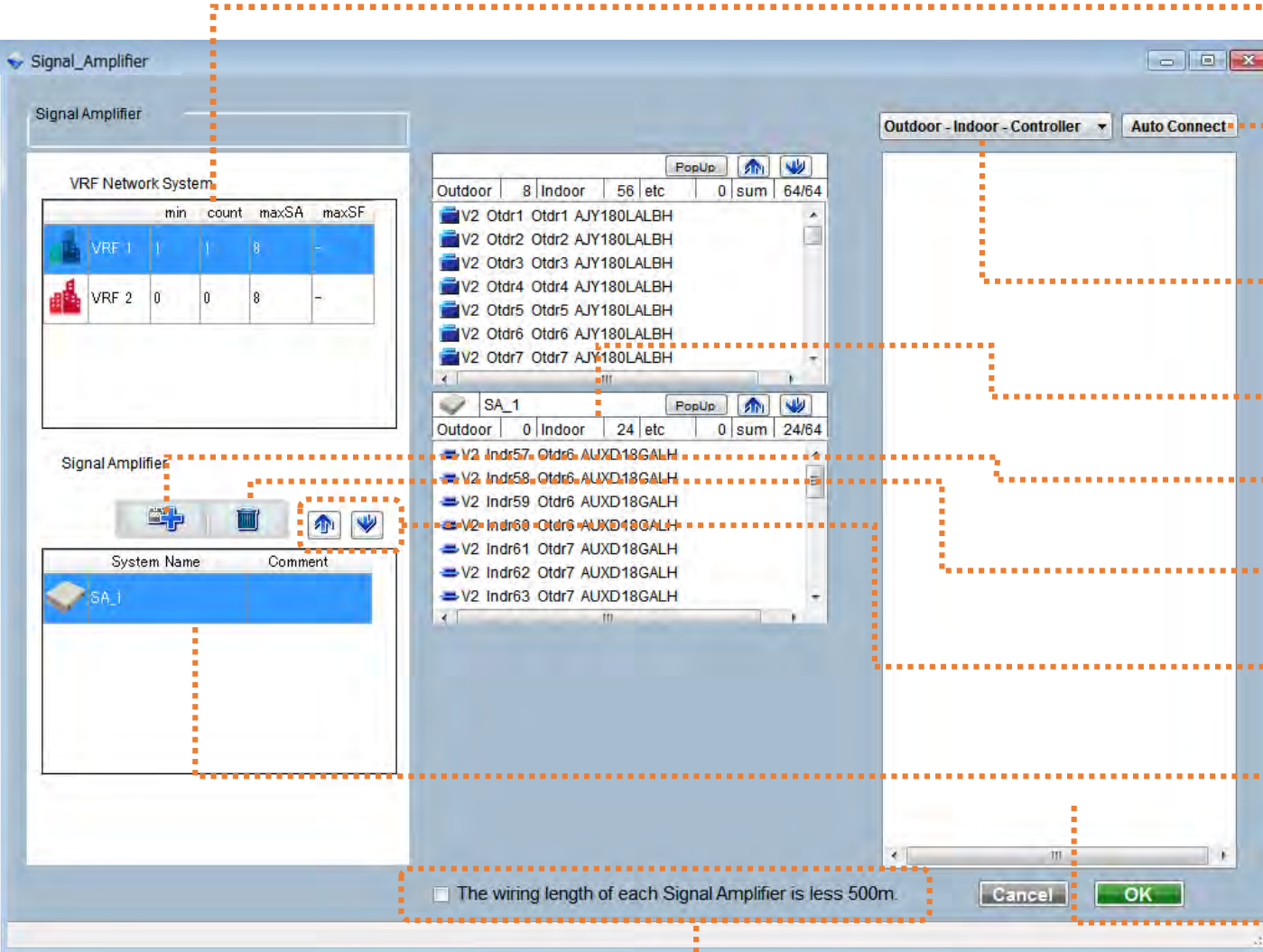
VRF System	No	Outdoor	OutdoorModel	No	Indoor	IndoorModel	Floor	Room	Comment	SA	Mdb	Bac	Lon
1	1	Otdr1	AJY270GALH	1	Indr1	AUXD18GALH			1F-1	0			
				2	Indr2	AUXD18GALH			1F-1	0			
				3	Indr3	AUXD18GALH			1F-2	0			
				4	Indr4	AUXD18GALH			1F-2	0			
				5	Indr5	AUXD18GALH			1F-3	0			
				6	Indr6	AUXD18GALH			1F-3	0			
				7	Indr7	AUXD18GALH			1F-4	0			
				8	Indr8	AUXD18GALH			1F-4	0			
				9	Indr9	AUXD18GALH			1F-4	0			
				10	Indr10	AUXD18GALH			1F-5	0			
				11	Indr11	AUXD18GALH			1F-5	0			
				12	Indr12	AUXD18GALH			1F-5	0			
				13	Indr13	AUXD18GALH			1F-5	0			
				14	Indr14	AUXD18GALH			1F-6	0			
				15	Indr15	AUXD18GALH			1F-6	0			
2	2	Otdr2	AJY270LALBH	16	Indr16	AUXD18GALH			1F-1				
				17	Indr17	AUXD18GALH			1F-1				
				18	Indr18	AUXD18GALH			1F-2				

Etc item list(As of April 2017)

- 1.Signal amplifier(Case of Auto Address not used)
- 2.Modbus Convertor
- 3.BACnet® gateway

Go to Etc setting screen

Etc list



The main window displays a list of units under the heading "Signal Amplifier". The list is organized into columns: Outdoor, Indoor, and etc. The units are listed in a table format, showing their status and configuration details.

The PopUp window is titled "PopUp" and shows a detailed view of the selected unit. It includes a table with columns for Outdoor, Indoor, and etc. The units are listed in a table format, showing their status and configuration details.

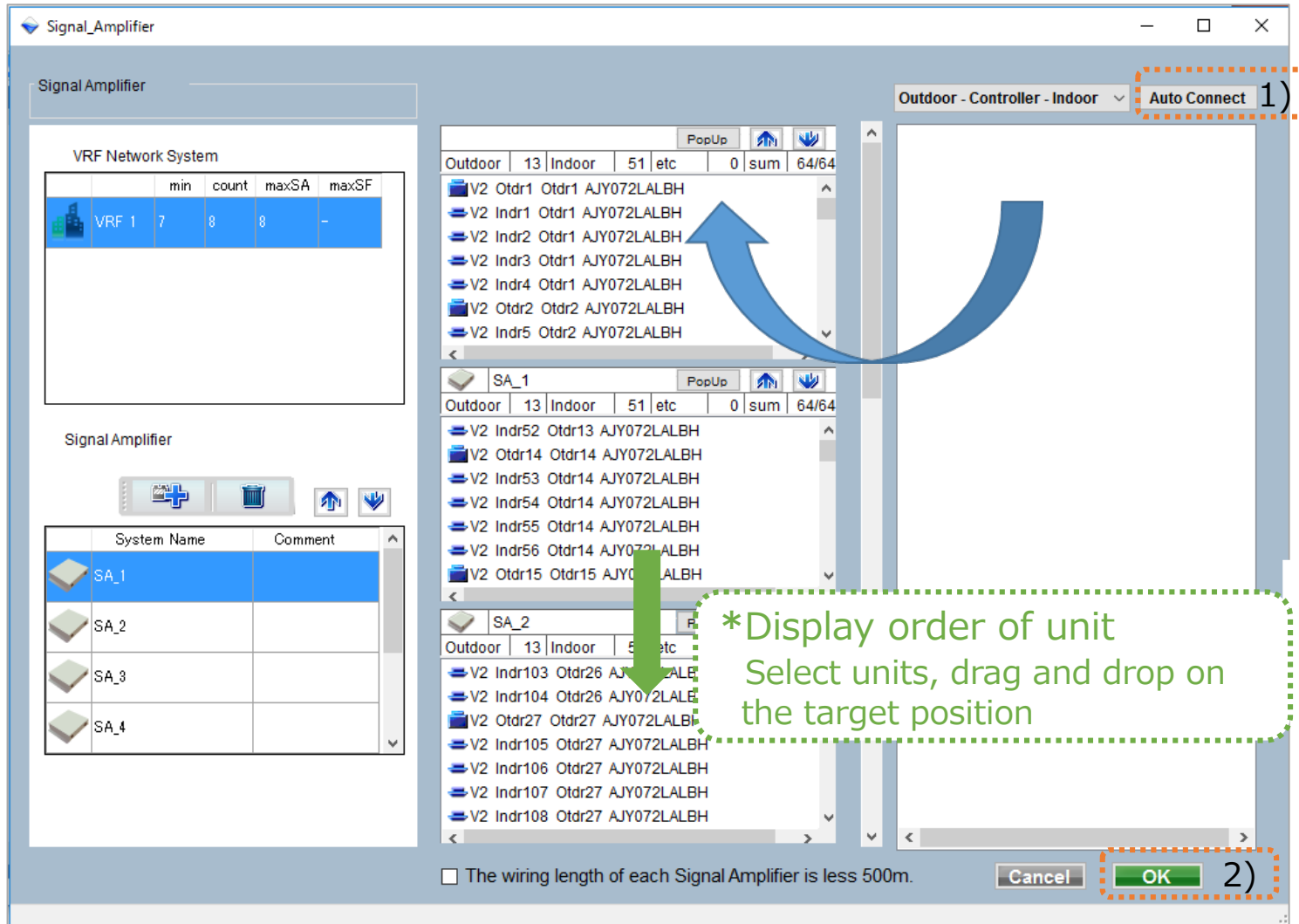
Annotations:

- PopUp Go PopUp screen
- Up and down Display order of units

4

Etc setting- Signal amplifier(3/4)

Case1 - Auto setting



1)Auto Connect

Automatically register 64 units on each segments

2)OK

Case2 - Manual setting

The screenshot shows the 'Signal Amplifier' software window. On the left, the 'VRF Network System' table has a row for 'VRF 1' with values 7, 8, 8, and 1, which is highlighted with a red dashed box and labeled '1)'. Below it, the 'Signal Amplifier' section shows a table with 'SA_1' selected, highlighted with a red dashed box and labeled '2)'. The main area displays a list of units for 'SA_1' and 'SA_2'. A red dashed box labeled '3)' highlights a unit in the list, with a blue arrow pointing to it. A green dashed box labeled '4)' highlights the 'OK' button at the bottom right. A green arrow points to the unit list with the text '*Display order of unit Select units, drag and drop on the target position'.

Signal Amplifier

VRF Network System

	min	count	maxSA	maxSE
VRF 1	7	8	8	1

Signal Amplifier

System Name	Comment
SA_1	
SA_2	
SA_3	
SA_4	

Outdoor - Controller - Indoor

Auto Connect

Outdoor | 13 | Indoor | 51 | etc | 0 | sum | 64/64

V2 Otdr1 Otdr1 AJY072LALBH

V2 Indr1 Otdr1 AJY072LALBH

V2 Indr2 Otdr1 AJY072LALBH

V2 Indr3 Otdr1 AJY072LALBH

V2 Indr4 Otdr1 AJY072LALBH

V2 Otdr2 Otdr2 AJY072LALBH

V2 Indr5 Otdr2 AJY072LALBH

SA_1

Outdoor | 13 | Indoor | 51 | etc | 0 | sum | 64/64

V2 Indr52 Otdr13 AJY072LALBH

V2 Otdr14 Otdr14 AJY072LALBH

V2 Indr53 Otdr14 AJY072LALBH

V2 Indr54 Otdr14 AJY072LALBH

V2 Indr55 Otdr14 AJY072LALBH

V2 Indr56 Otdr14 AJY072LALBH

V2 Otdr15 Otdr15 AJY072LALBH

SA_2

Outdoor | 13 | Indoor | 51 | etc | 0 | sum | 64/64

V2 Indr103 Otdr26 AJY072LALBH

V2 Indr104 Otdr26 AJY072LALBH

V2 Otdr27 Otdr27 AJY072LALBH

V2 Indr105 Otdr27 AJY072LALBH

V2 Indr106 Otdr27 AJY072LALBH

V2 Indr107 Otdr27 AJY072LALBH

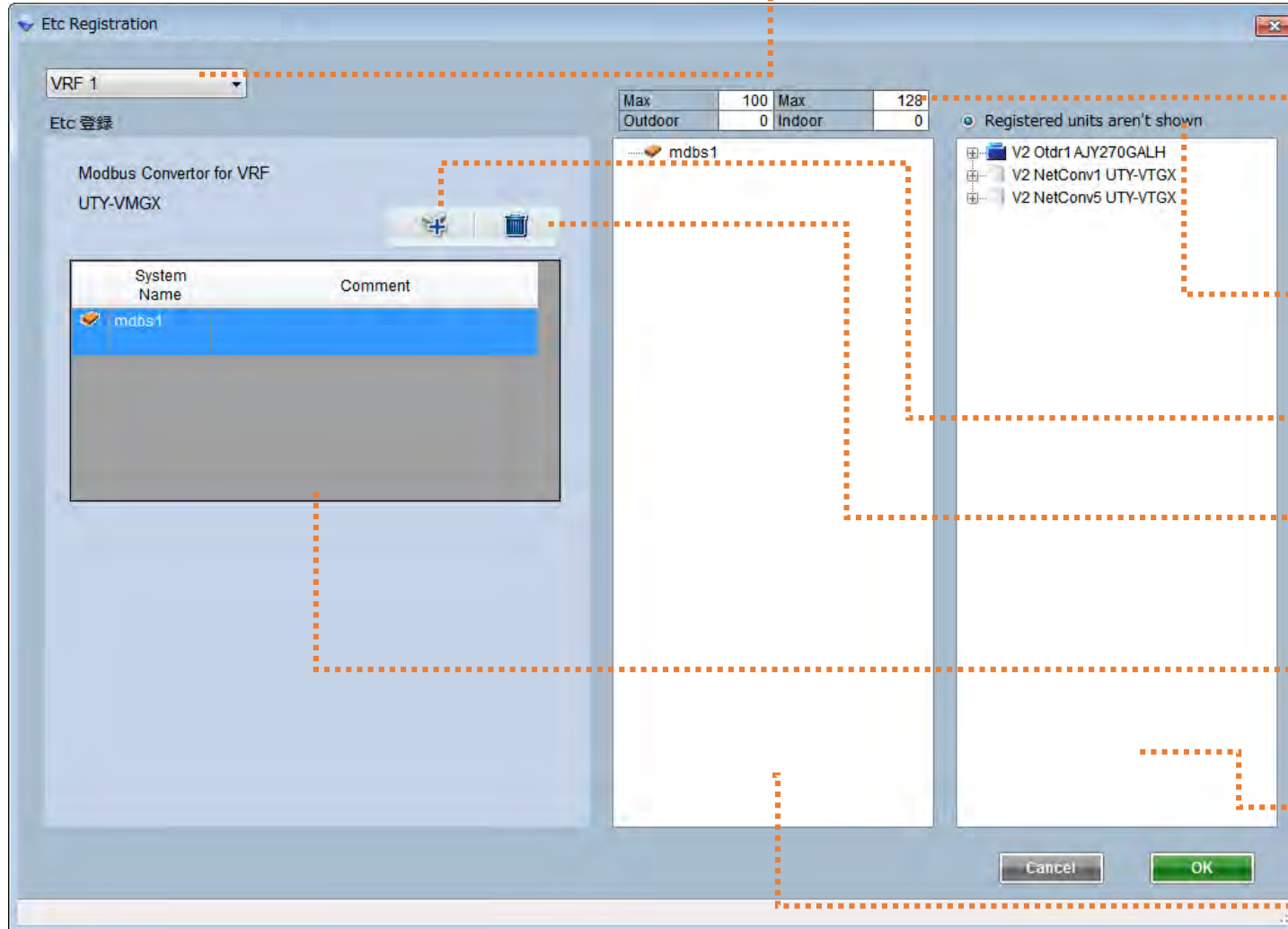
V2 Indr108 Otdr27 AJY072LALBH

*Display order of unit
Select units, drag and drop on the target position

☐ The wiring length of each Signal Amplifier is less 500m.

Cancel OK

- 1) Select VRF network system
- 2) Add Signal amplifier
- 3) Select units, drag and drop on the target segment
- 4) OK



VRF System

Select the VRF System to be shown

Modbus Convertor connection condition

Registered units aren't shown

Registered units are not shown by checking

Add Modbus Convertor

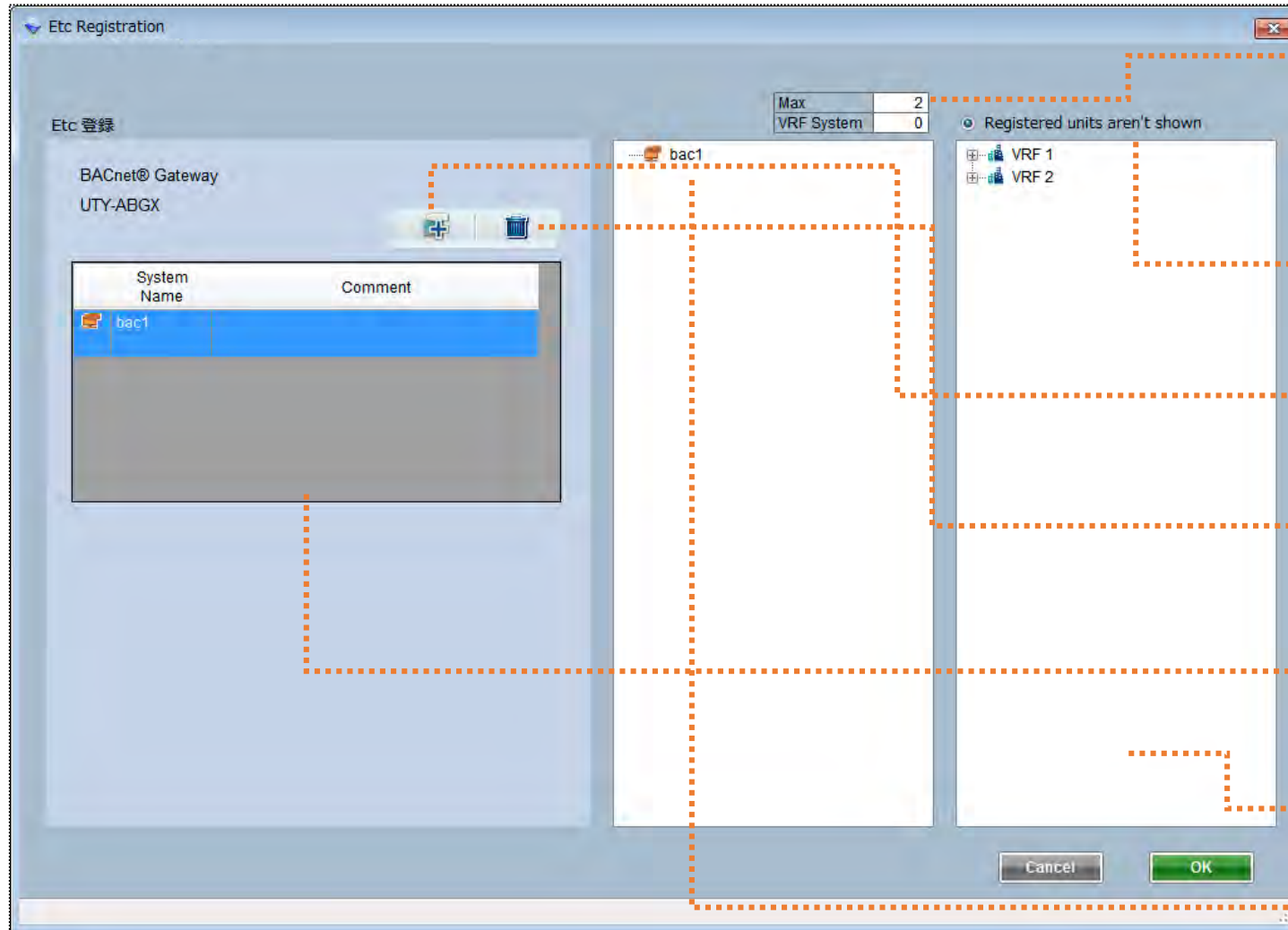
Delete Modbus Convertor

Modbus Convertor list

System Name : Modbus Convertor Name
Comment : Comment

Unregistered unit list

Registered unit list



Modbus Convertor connection condition

Registered units aren't shown
Registered units are not shown by checking

Add BACnet® gateway

Delete BACnet® gateway

Modbus Convertor list
System Name : Modbus Convertor Name
Comment : Comment

Unconnected unit list

Connected unit list