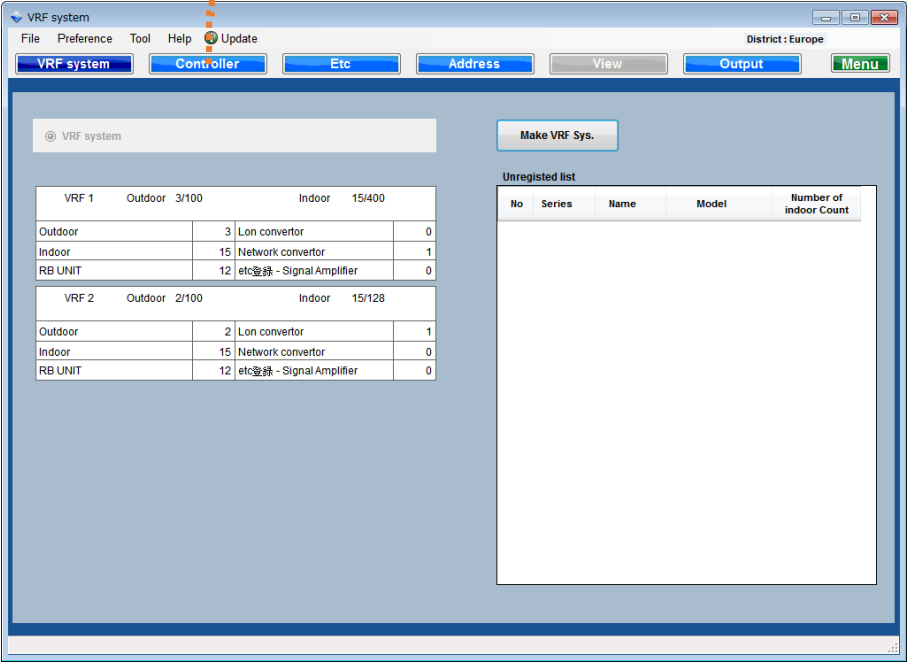
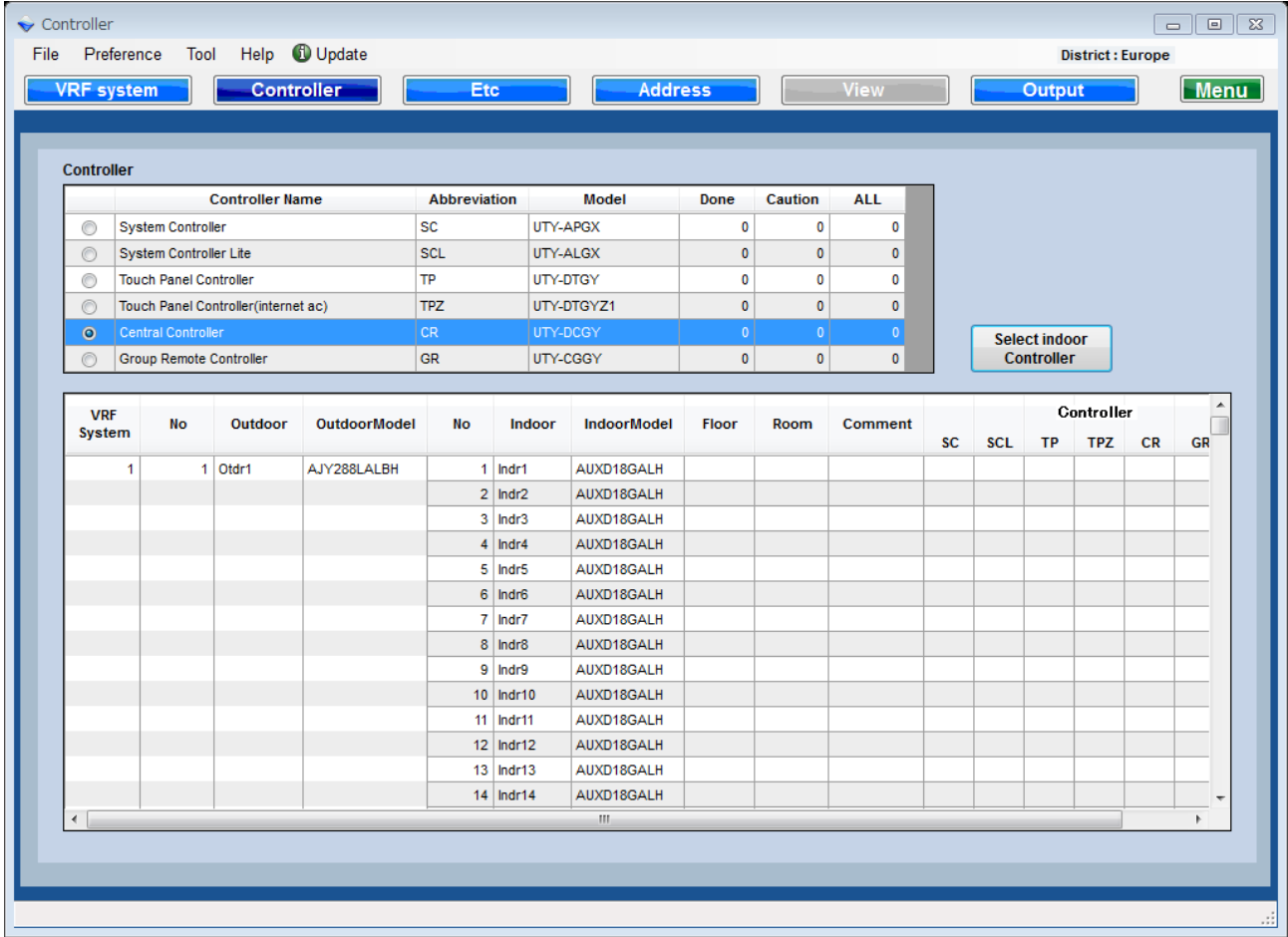


Select "Controller"



Controller screen



## Controller item list(As of March 2017)

- 1.System Controller
- 2.System Controller Lite
- 3.Touch Panel Controller
- 4.Touch Panel Controller(internet ac)
- 5.Central Controller
- 6.Group Remote Controller

Go to Controller setting screen

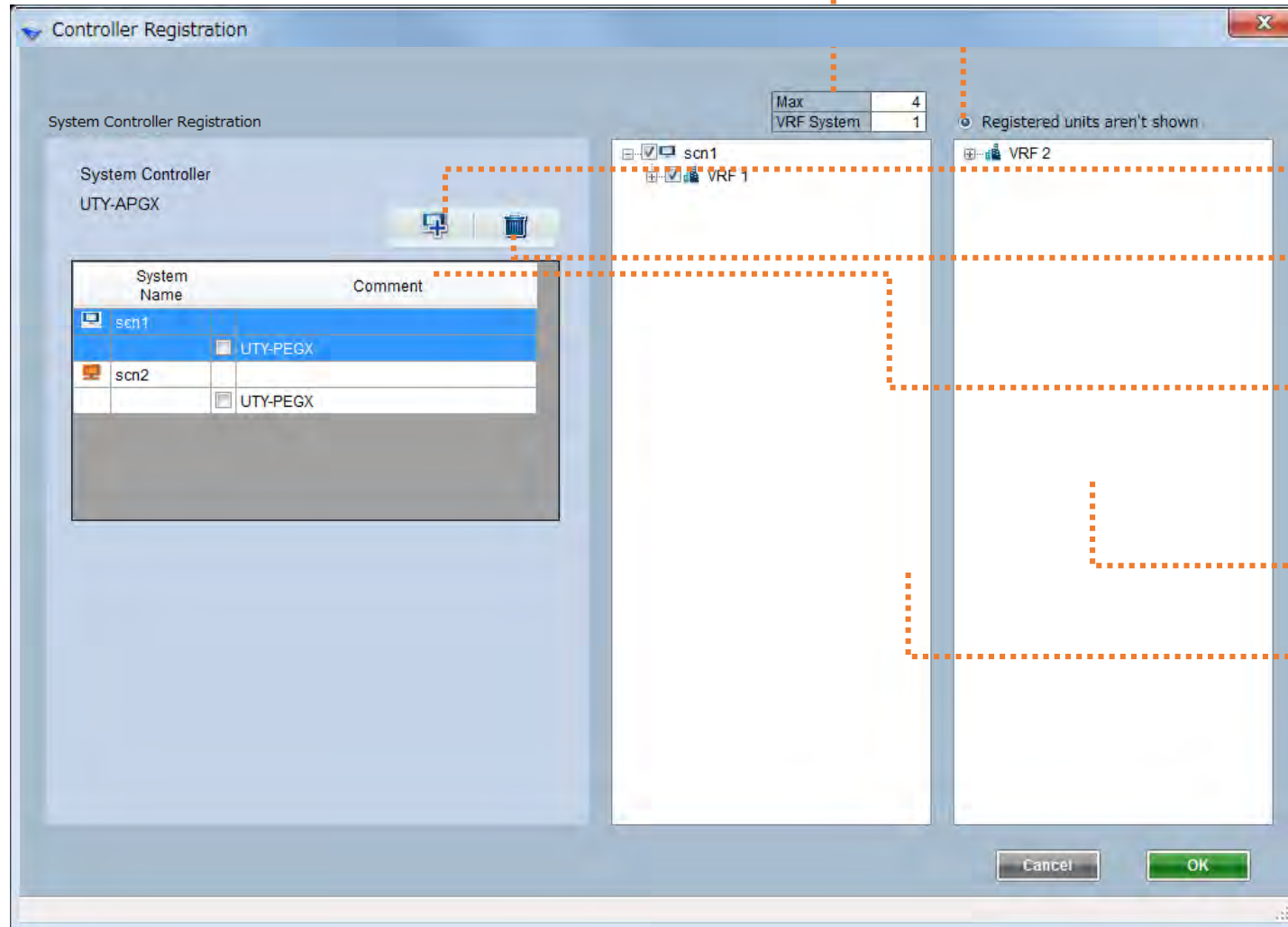
All Controller conditions  
Confirm controller units No. by each indoors.

The screenshot shows the 'Controller' software interface. At the top, there is a menu bar with 'File', 'Preference', 'Tool', 'Help', and 'Update'. Below the menu bar, there are several buttons: 'VRF system', 'Controller', 'Etc', 'Address', 'View', 'Output', and 'Menu'. The 'Controller' button is highlighted. The main window displays a table titled 'Controller' with the following columns: Controller Name, Abbreviation, Model, Done, Caution, and ALL. The table lists six controller types, with 'Group Remote Controller' selected. Below this table, there is a 'Select indoor Controller' button. At the bottom of the window, there is a large table titled 'VRF System' with columns for VRF System, No, Outdoor, OutdoorModel, No, Indoor, IndoorModel, Floor, Room, Comment, and a 'Controller' section with sub-columns SC, SCL, TP, TPZ, CR, and GR. The table shows a single outdoor unit connected to 14 indoor units.

Controller					
Controller Name	Abbreviation	Model	Done	Caution	ALL
<input type="radio"/> System Controller	SC	UTY-APGX	1	0	1
<input type="radio"/> System Controller Lite	SCL	UTY-ALGX	0	0	0
<input type="radio"/> Touch Panel Controller	TP	UTY-DTGY	2	0	2
<input type="radio"/> Touch Panel Controller(internet ac)	TPZ	UTY-DTGYZ1	0	0	0
<input type="radio"/> Central Controller	CR	UTY-DCGY	0	0	0
<input checked="" type="radio"/> Group Remote Controller	GR	UTY-CGGY	1	0	1

VRF System	No	Outdoor	OutdoorModel	No	Indoor	IndoorModel	Floor	Room	Comment	Controller					
										SC	SCL	TP	TPZ	CR	GR
1	1	Otdr1	AJY288LALBH	1	Indr1	AUXD18GALH				1		1			
				2	Indr2	AUXD18GALH				1		1			
				3	Indr3	AUXD18GALH				1		1			
				4	Indr4	AUXD18GALH				1		1			
				5	Indr5	AUXD18GALH				1		1			
				6	Indr6	AUXD18GALH				1		1			
				7	Indr7	AUXD18GALH				1		1			
				8	Indr8	AUXD18GALH				1		1			
				9	Indr9	AUXD18GALH				1		1			
				10	Indr10	AUXD18GALH				1		1			
				11	Indr11	AUXD18GALH				1		1			
				12	Indr12	AUXD18GALH				1		1			
				13	Indr13	AUXD18GALH				1		1			
				14	Indr14	AUXD18GALH				1		1			



System Controller condition

Registered units aren't shown  
Registered VRF Systems are not shown by checking

Add System Controller

Delete System Controller

System Controller list and Add option

Option is added by checking

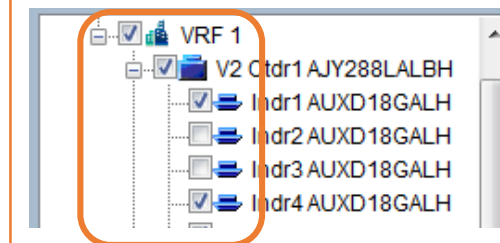
Icon color : Normal

Icon color : Warning

Icon color : Error

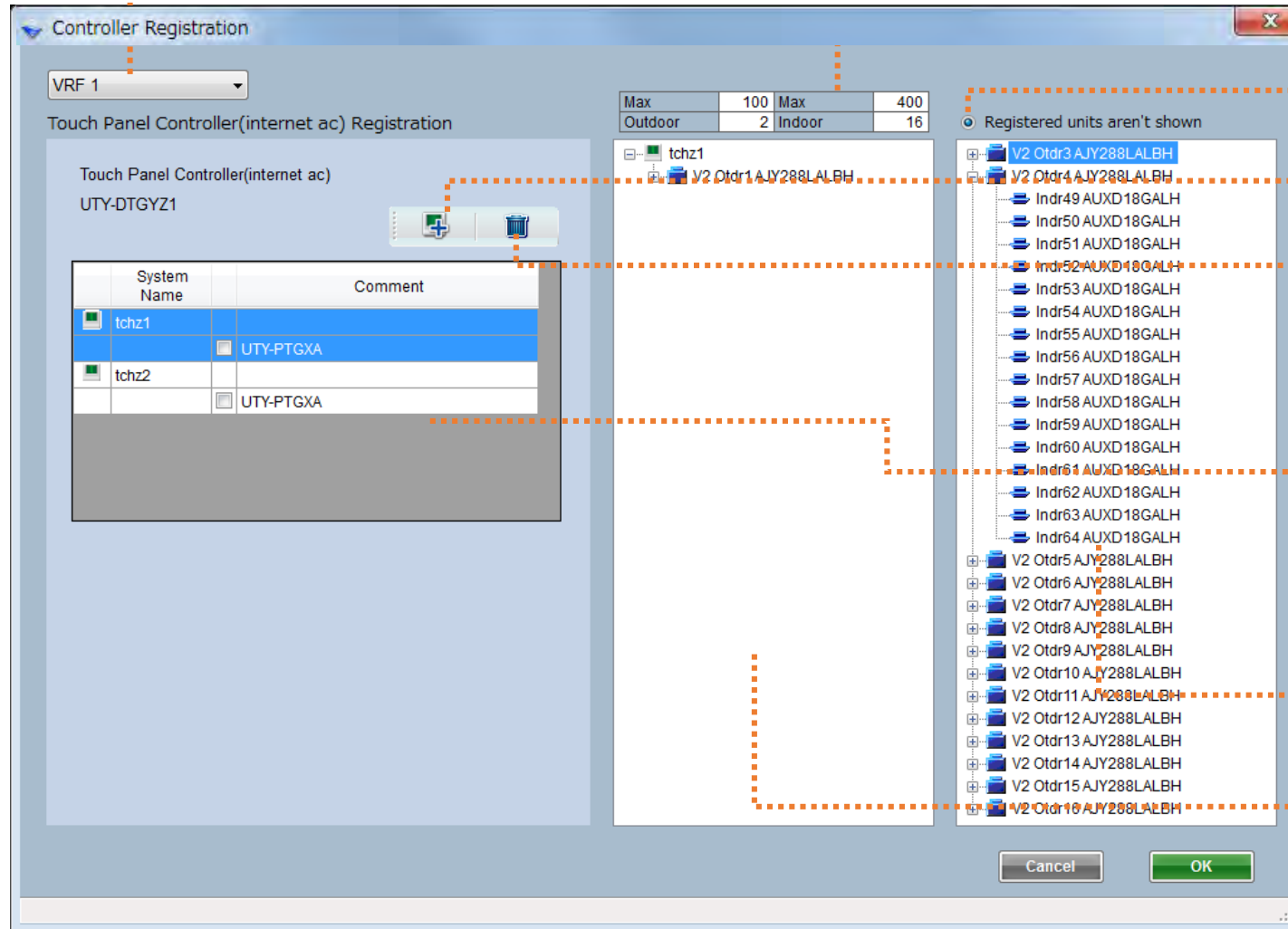
Unregistered unit list

Registered unit list



Refrigerant systems and indoor units to control could be selected each

# Controller-Touch panel controller, Central Controller Control design



Select VRF System

Touch/Central Controller condition

Registered units aren't shown

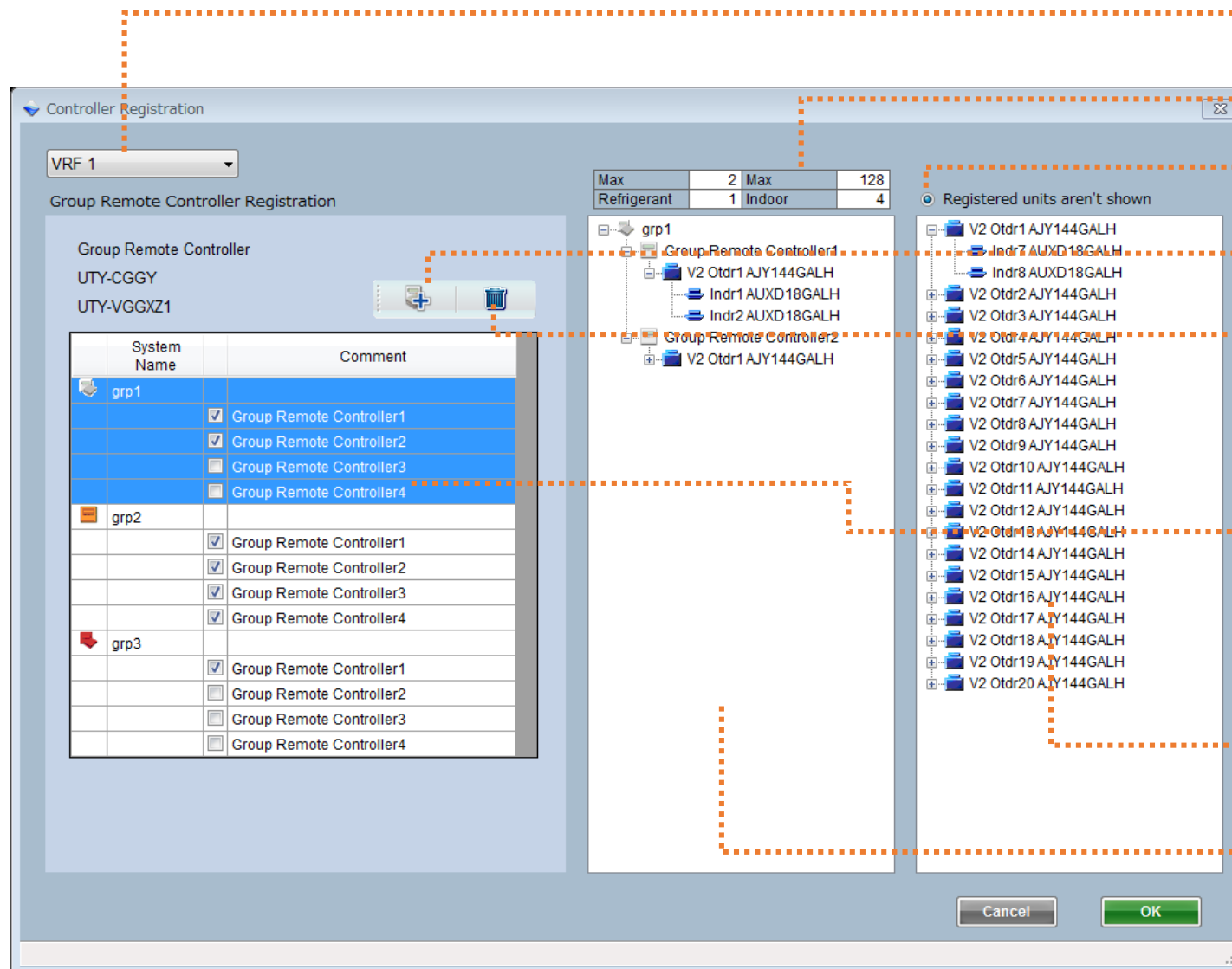
Add Touch/Central Controller

Delete Touch/Central Controller

Touch/Central Controller list and Add option  
Option is added by checking  
Icon color : Normal  
Icon color : Warning  
Icon color : Error

Unregistered unit list  
Refrigerant systems and indoor units could be registered each

Registered unit list



Select VRF System

Group Remote Controller set condition

Registered units aren't shown

Add Group Remote Controller set

Delete Group Remote Controller set

Group Remote Controller set list  
Group Remote Controller is added by checking  
Icon color : Normal  
Icon color : Warning  
Icon color : Error

Unregistered unit list  
Refrigerant systems and indoor units could be  
registered each

Registered unit list