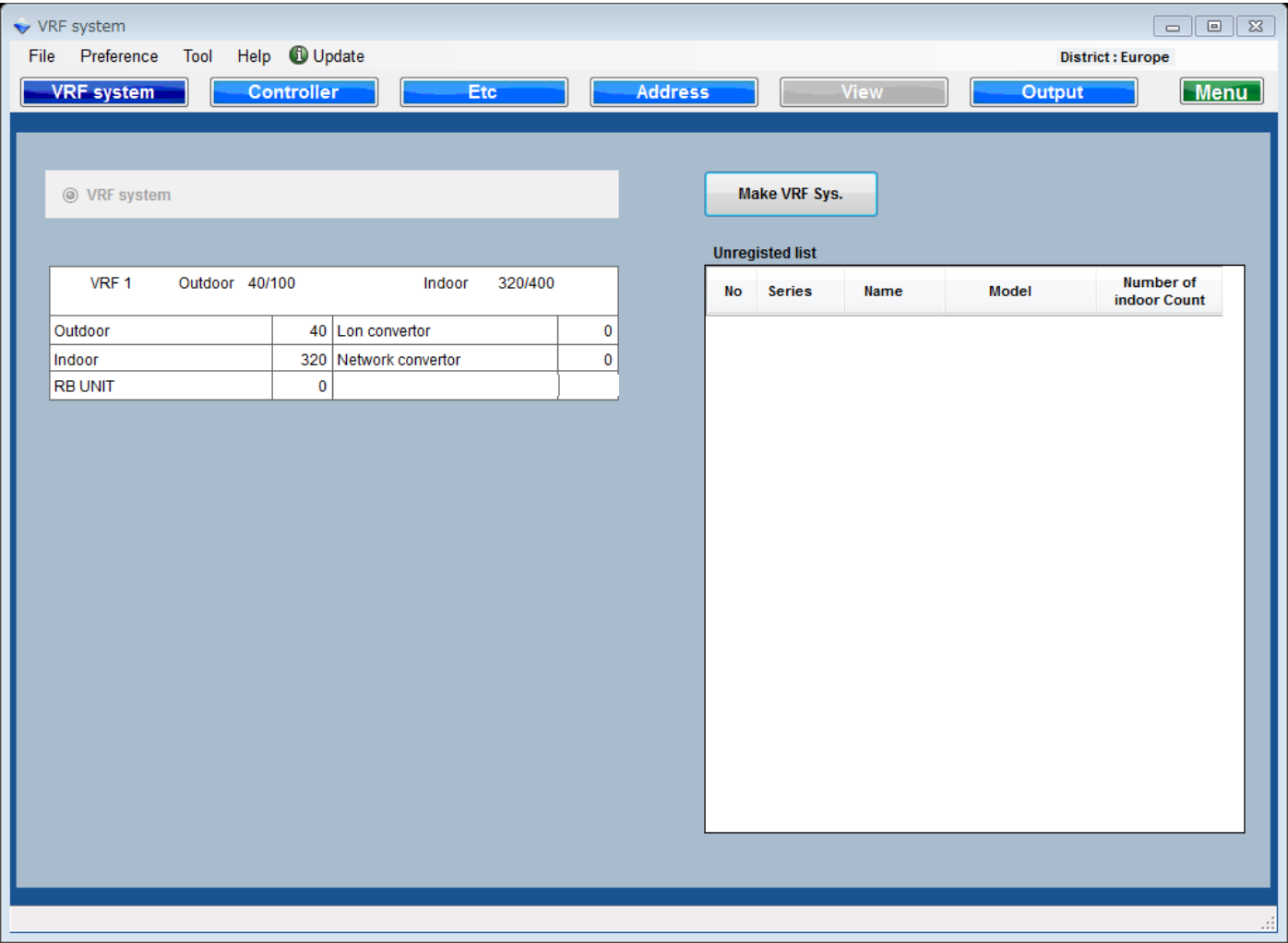


Select "Control Design"

Control Design screen (VRF Network system)



Target unit list  
Select target unit

Target unit conditions  
Confirm target units conditions  
Done : The number of setting units  
Caution : The number of no setting units  
All : The number of all units  
Font color : Normal  
Font color : Warning  
Font color : Error

Go to setting screen

All units conditions  
Confirm target units No. by each units.

The screenshot shows the 'Controller' software interface. At the top, there is a menu bar with 'File', 'Preference', 'Tool', 'Help', and 'Update'. Below the menu bar, there are several buttons: 'VRF system', 'Controller', 'Etc', 'Address', 'View', 'Output', and 'Menu'. The main area is divided into two sections. The top section, titled 'Controller', contains a table with columns: Controller Name, Abbreviation, Model, Done, Caution, and ALL. The bottom section, titled 'VRF System', contains a table with columns: VRF System, No, Outdoor, OutdoorModel, No, Indoor, IndoorModel, Floor, Room, Comment, and a set of checkboxes for Controller types (SC, SCL, TP, TPZ, CR, GR). A 'Select indoor Controller' button is also present.

Controller Name	Abbreviation	Model	Done	Caution	ALL
System Controller	SC	UTY-APGX	1	0	1
System Controller Lite	SCL	UTY-ALGX	0	0	0
Touch Panel Controller	TP	UTY-DTGY	2	0	2
Touch Panel Controller(internet ac)	TPZ	UTY-DTGYZ1	0	0	0
Central Controller	CR	UTY-DCGY	0	0	0
Group Remote Controller	GR	UTY-CCGY	1	0	1

VRF System	No	Outdoor	OutdoorModel	No	Indoor	IndoorModel	Floor	Room	Comment	SC	SCL	TP	TPZ	CR	GR
1	1	Otdr1	AJY288LALBH	1	Indr1	AUXD18GALH				1		1			
				2	Indr2	AUXD18GALH				1		1			
				3	Indr3	AUXD18GALH				1		1			
				4	Indr4	AUXD18GALH				1		1			
				5	Indr5	AUXD18GALH				1		1			
				6	Indr6	AUXD18GALH				1		1			
				7	Indr7	AUXD18GALH				1		1			
				8	Indr8	AUXD18GALH				1		1			
				9	Indr9	AUXD18GALH				1		1			
				10	Indr10	AUXD18GALH				1		1			
				11	Indr11	AUXD18GALH				1		1			
				12	Indr12	AUXD18GALH				1		1			
				13	Indr13	AUXD18GALH				1		1			
				14	Indr14	AUXD18GALH				1		1			

# Common User Interface(2/3) – Setting screen

## Control design

Controller Registration

VRF 1

Central Controller Registration

Central Controller  
UTY-DCGY

System Name	Comment
ctrl1	
ctrl2	
ctrl3	
ctrl4	

Max	100	Max	100
Outdoor	0	Indoor	0

Registered units aren't shown

- V2 Otdr9 AJY288LALBH
- V2 Otdr10 AJY288LALBH
- V2 Otdr11 AJY288LALBH
- V2 Otdr12 AJY288LALBH
- V2 Otdr13 AJY288LALBH
- V2 Otdr14 AJY288LALBH
- V2 Otdr15 AJY288LALBH
- V2 Otdr16 AJY288LALBH

Cancel OK

Select VRF System

Select the VRF network System

Target unit connection condition

Max : Maximum number of connectable unit1

Unit1 : The Number of connected unit1

Max : Maximum number of connectable unit2

Unit2 : The Number of connectable unit2

Registered units aren't shown

Registered units are not shown by checking

Add target unit

Delete target unit

Target unit list

Icon color : Normal

Icon color : Warning

Icon color : Error

Unregistered unit list

OK :Registered and go to list screen

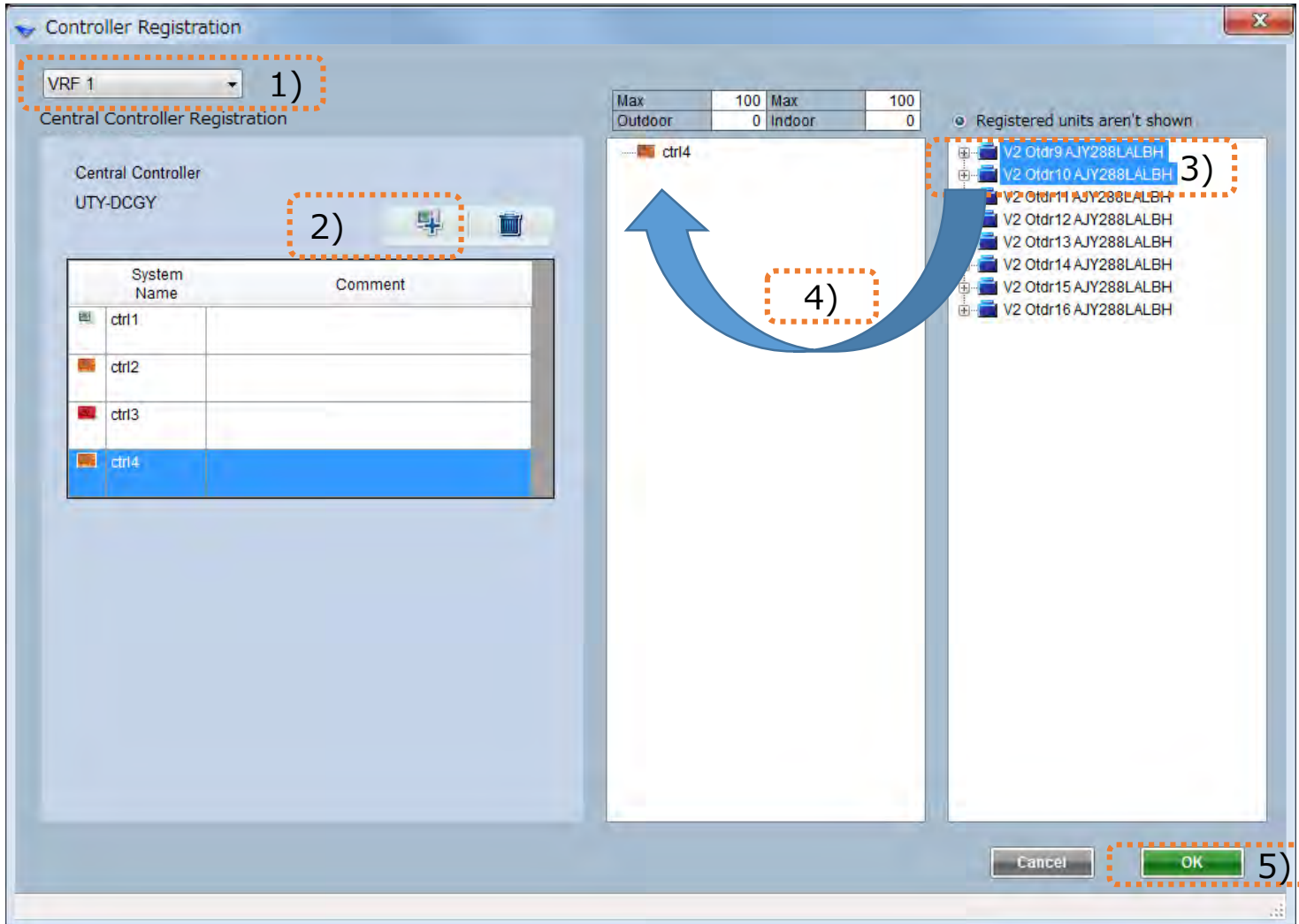
Cancel:Not registered and go to list screen

Registered unit list

# Common User Interface(3/3) – Setting screen

Control design

How to register units to the target unit



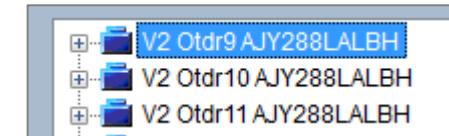
1) Select VRF network system

2) Add target unit

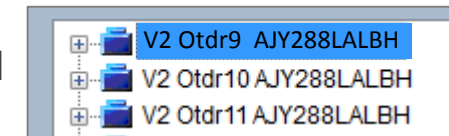
3) Select units

Ctrl+left-click to select units

Selected



Not Selected



4) Drag and drop on target unit icon

5) OK

The screenshot displays the 'VRF system' software interface. The top menu bar includes 'File', 'Preference', 'Tool', 'Help', and 'Update'. Below the menu is a toolbar with buttons for 'VRF system', 'Controller', 'Etc', 'Address', 'View', 'Output', and 'Menu'. The main window is divided into two sections. The left section shows 'VRF 1' and 'VRF 2' settings. The right section shows an 'Unregistered list' table. A 'Make VRF Sys.' button is located above the table. Dashed orange arrows point from the 'Controller' button to the 'VRF System List' box, from the 'Make VRF Sys.' button to the 'To VRF Network System setting screen' box, and from the 'Unregistered list' table to the 'Not registered outdoor list' box.

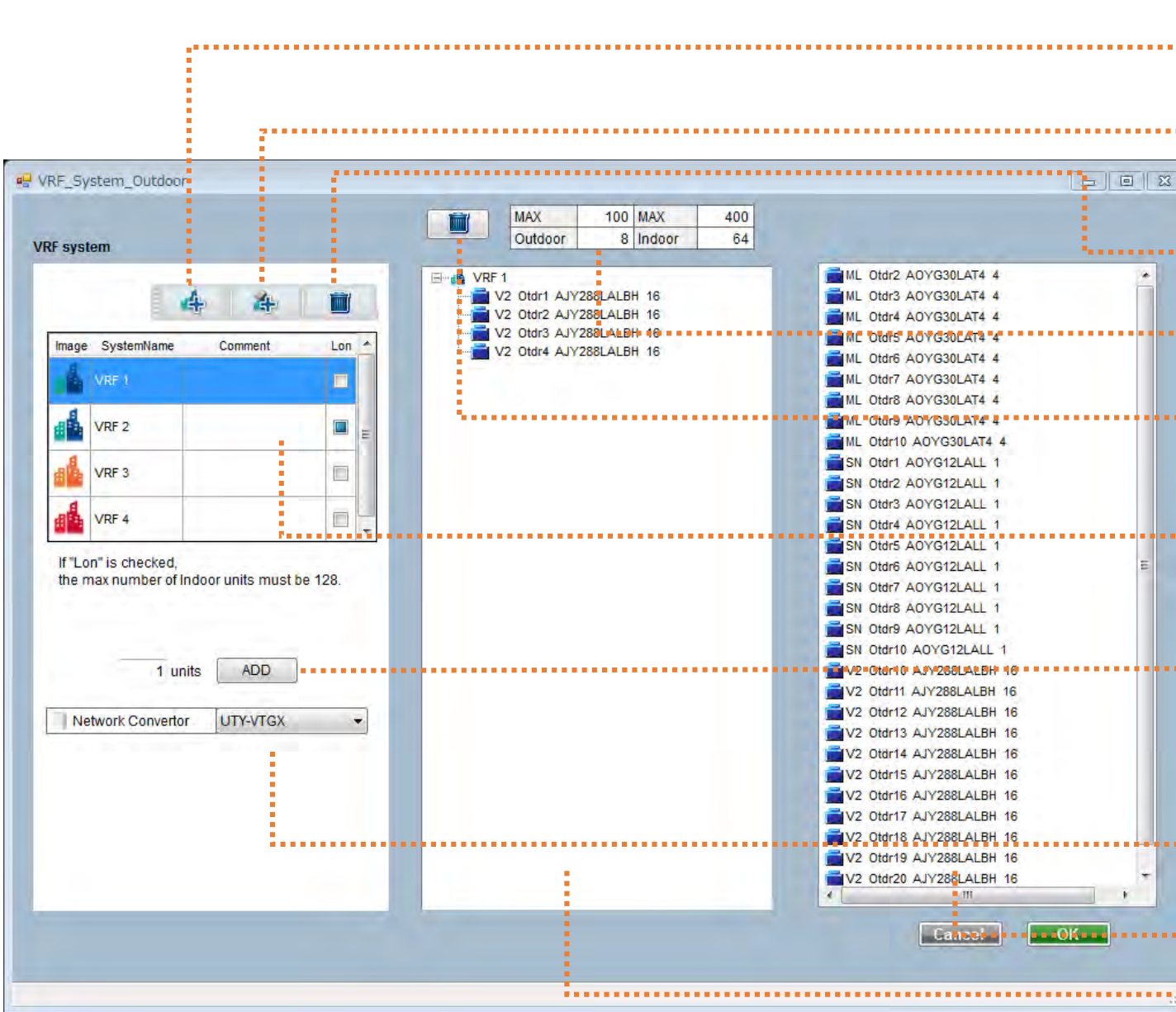
**VRF System List**

Font color : Normal  
Font color : Warning  
Font color : Error

**To VRF Network System setting screen**

**Not registered outdoor list**

No	Series	Name	Model	Number of indoor Count
1	ML	Otdr1	AOYG30LAT4	4
2	ML	Otdr2	AOYG30LAT4	4
3	ML	Otdr3	AOYG30LAT4	4
4	ML	Otdr4	AOYG30LAT4	4
5	ML	Otdr5	AOYG30LAT4	4
6	ML	Otdr6	AOYG30LAT4	4
7	ML	Otdr7	AOYG30LAT4	4
8	ML	Otdr8	AOYG30LAT4	4
9	ML	Otdr9	AOYG30LAT4	4
10	ML	Otdr10	AOYG30LAT4	4
11	SN	Otdr1	AOYG12LALL	1
12	SN	Otdr2	AOYG12LALL	1
13	SN	Otdr3	AOYG12LALL	1
14	SN	Otdr4	AOYG12LALL	1
15	SN	Otdr5	AOYG12LALL	1
16	SN	Otdr6	AOYG12LALL	1
17	SN	Otdr7	AOYG12LALL	1
18	SN	Otdr8	AOYG12LALL	1
19	SN	Otdr9	AOYG12LALL	1
20	SN	Otdr10	AOYG12LALL	1
21	1/2	Otdr9	AOYG28LALBH	16



Add VRF network system  
Max number of indoors :400

Add VRF network system with Lon Convertor  
Max number of indoors :128

Delete VRF network system

VRF network system condition

Delete Network Convertor & release outdoor

VRF network system list  
In case of VRF network system with Lon Convertor,  
row of Lon is checked

Add Network Convertor  
To register SN,ML,FM on the VRF NW system must be  
connected under Network Convertor.  
Input the number of network convertors and push  
add button.

Select Network Convertor model

Unregistered unit list

Registered unit list