

選擇“報告”

更改為報告初始視窗

Report

File Preference Tool Help Update

Indoor unit Outdoor unit Piping Wiring Report Menu

District: Europe

Project

Select

☒ Material list ☐ Indoor unit ☐ Outdoor unit ☐ Option 1

☐ Option 2 ☐ User options(Project) ☐ User options(Refrigerant)

Item	Model	Quantity	Type	Remarks1	Remarks2
Outdoor	AOYG45LBT8	1	8 Rooms Multi System		
Indoor	AUYG07LVLA	6	Compact cassette		
Remote controller	Accessory1	6	Wireless RC(Accessory)		
Options	UTG-UFYD-W	6	Cassette Grille		
Branch kit	UTP-SX248A	1	Separation tube		
Branch Box	UTP-PY03A	2	Branch Box		
Pipe	6.35	0.0		Unit: m	Total pipe length:
Pipe	9.52	0.0		Unit: m	Total pipe length:
Pipe	15.88	0.0		Unit: m	Total pipe length:
Refrigerant	R410A	0.0		Unit: lbs	Total Refrigerant:

材料清單

Report

File Preference Tool Help Update

District : Europe

Indoor unit Outdoor unit Piping Wiring Report Menu

Project

Select

☒ Material list ☐ Indoor unit ☐ Outdoor unit ☐ Option 1

☐ Option 2 ☐ User options(Project) ☐ User options(Refrigerant)

Output

Item	Model	Quantity	Type
Outdoor	AOYG45LBT8	1	8 Rooms Multi System
Indoor	AUYG07LVLA	6	Compact cassette
Remote controller	Accessory1	6	Wireless RC(Accessory)
Options	UTG-UFYD-W	6	Cassette Grille
Branch kit	UTP-SX248A	1	Separation tube
Branch Box	UTP-PY03A	2	Branch Box
Pipe	6.35	0.0	Unit: m Total pipe length:
Pipe	9.52	0.0	Unit: m Total pipe length:
Pipe	15.88	0.0	Unit: m Total pipe length:
Refrigerant	R410A	0.0	Unit: lbs Total Refrigerant:

選擇“材料清單”

可以確認數據

所有材料清單室內機規格室外機規格
所有可選部件

室內機

Report

File Preference Tool Help Update

District : Europe

Indoor unit Outdoor unit Piping Wiring Report Menu

Project







Select

☒ Indoor unit ☐ Outdoor unit ☐ Option 1

☐ Material list ☐ Option 2 ☐ User options(Project) ☐ User options(Refrigerant)

Output

Otdr1

Name	Image	Model	RC C (kW)	RC H (kW)	Tmp C (C) (WBT)	Rq TC (kW)	TC (kW)	Rq SC (kW)	SC (kW)	Tmp H (C)	F
Indr1		AUYG07LVLA	2.05	2.37	27.0/19.0	0.50	2.05	0.50	1.60	20.0	
Indr2		AUYG07LVLA	2.05	2.37	27.0/19.0	0.50	2.05	0.50	1.60	20.0	
Indr3		AUYG07LVLA	2.05	2.37	27.0/19.0	0.50	2.05	0.50	1.60	20.0	
Indr4		AUYG07LVLA	2.05	2.37	27.0/19.0	0.50	2.05	0.50	1.60	20.0	
Indr5		AUYG07LVLA	2.05	2.37	27.0/19.0	0.50	2.05	0.50	1.60	20.0	
Indr6		AUYG07LVLA	2.05	2.37	27.0/19.0	0.50	2.05	0.50	1.60	20.0	

選擇“室內機”

室內機的規格

室外機

Report

File Preference Tool Help Update

District : Europe

Indoor unit Outdoor unit Piping Wiring Report Menu

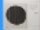
Project

Select

☐ Material list ☐ Indoor unit ☒ Outdoor unit ☐ Option 1

☐ Option 2 ☐ User options(Project) ☐ User options(Refrigerant)

Otdr1

Image	Model	Combination	EER	COP	Comb (%)	RC C (kW)	RC H (kW)	Tmp C (C)	TC (kW)	Tmp H (C)	HC (kW)
	AOYG45LBT8		2.69	3.16	87.9	14.00	16.00	35.0	12.30	7.0	14.22

選擇“室外機”

室內機的規格

選項1

Report

File Preference Tool Help Update

District : Europe

Indoor unit Outdoor unit Piping Wiring Report Menu

Project

Select

☐ Material list ☐ Indoor unit ☐ Outdoor unit ☒ Option 1

☐ Option 2 ☐ User options(Project) ☐ User options(Refrigerant)

Output

Otdr1

Unit	Item	Model	Quantity	Type	Remarks1
Indr1	Remote controller	Accessory1	1	Wireless RC(Accessory)	
Indr1	Options	UTG-UFYD-W	1	Cassette Grille	
Indr2	Remote controller	Accessory1	1	Wireless RC(Accessory)	
Indr2	Options	UTG-UFYD-W	1	Cassette Grille	
Indr3	Remote controller	Accessory1	1	Wireless RC(Accessory)	
Indr3	Options	UTG-UFYD-W	1	Cassette Grille	
Indr4	Remote controller	Accessory1	1	Wireless RC(Accessory)	
Indr4	Options	UTG-UFYD-W	1	Cassette Grille	
Indr5	Remote controller	Accessory1	1	Wireless RC(Accessory)	
Indr5	Options	UTG-UFYD-W	1	Cassette Grille	
Indr6	Remote controller	Accessory1	1	Wireless RC(Accessory)	
Indr6	Options	UTG-UFYD-W	1	Cassette Grille	
	Branch kit	UTP-SX248A	1	Separation tube	
	Branch Box	UTP-PY03A	2	Branch Box	
	Pipe	6.35	0.0		Unit: m
	Pipe	9.52	0.0		Unit: m
	Pipe	15.88	0.0		Unit: m

選擇“選項 1”

選項信息被輸出

用戶選項(報告)

The screenshot shows the 'Report' software window. The title bar is 'Report'. The menu bar includes 'File', 'Preference', 'Tool', 'Help', and 'Update'. The 'District : Europe' is selected. The main toolbar has buttons for 'Indoor unit', 'Outdoor unit', 'Piping', 'Wiring', 'Report', and 'Menu'. Below the toolbar, there is a 'Project' section with a 'Select' dropdown. The 'Select' dropdown is set to 'User options(Project)', which is circled in red. Other options in the 'Select' dropdown include 'Material list', 'Option 2', 'Indoor unit', 'Outdoor unit', 'Option 1', and 'User options(Refrigerant)'. To the right of the 'Select' dropdown is an 'Output' button. Below the 'Select' dropdown is a table with the following data:

Inside classification	Small classification	User option	Quantity
B1	bb1	DDD	1
B1	bb1	EEE	1

選擇“用戶選項(報告)”

用戶選項(冷媒)

Report

File Preference Tool Help Update

District : Europe

Indoor unit Outdoor unit Piping Wiring Report Menu

Project

Select

☐ Material list ☐ Indoor unit ☐ Outdoor unit ☐ Option 1

☐ Option 2 ☐ User options(Project) ☒ User options(Refrigerant)

Output

Inside classification	Small classification	User option	Quantity
A1	A11	A111	
A1	A11	A112	
C1	D1	111	1

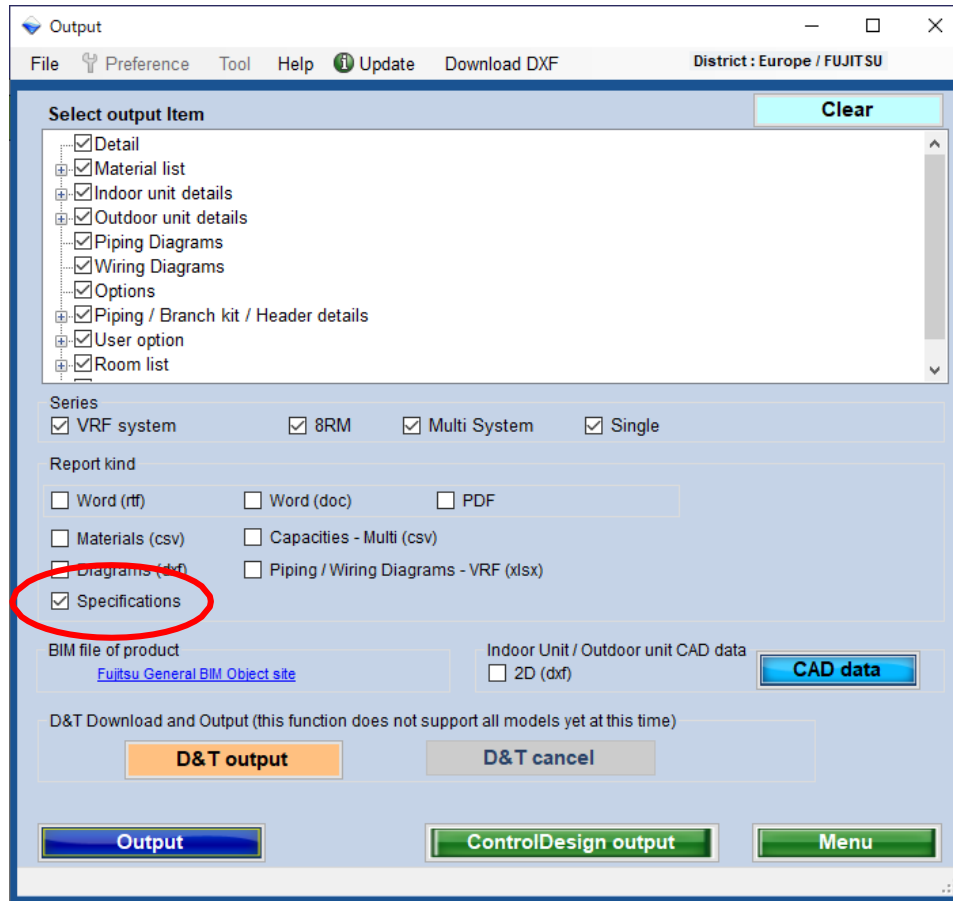
Otdr1

< >

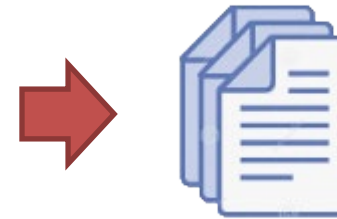
選擇“用戶選項(冷媒)”

Specifications

Output a specifications document file automatically combined ones of selected models.



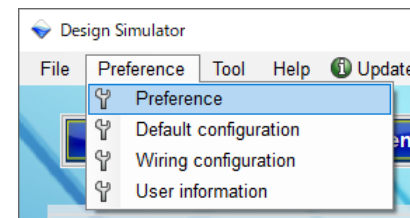
Output



One file for a project

[setting]

Source folder containing document files for models is specified in Preference at Menu.



Specs



[note]

Specification document file for each model have to be prepared.