

Исходни данни

Report

File Preference Tool Help Update

District : Europe

Indoor unit Outdoor unit Piping Wiring Report Menu

Project

Select

☒ Material list ☐ Indoor unit ☐ Outdoor unit ☐ Option 1

☐ Option 2 ☐ User options(Project) ☐ User options(Refrigerant)

Item	Model	Quantity	Type	Remarks1	Remarks2
Outdoor	AOYG45LBT8	1	8 Rooms Multi System		
Indoor	ALYG07LVLA	6	Compact cassette		
Remote controller	Accessory1	6	Wireless RC(Accessory)		
Options	UTG-UFYD-W	6	Cassette Grille		
Branch kit	UTP-SX248A	1	Separation tube		
Branch Box	UTP-PY03A	2	Branch Box		
Pipe	6.35	0.0	Unit: m	Total pipe length:	
Pipe	9.52	0.0	Unit: m	Total pipe length:	
Pipe	15.88	0.0	Unit: m	Total pipe length:	
Refrigerant	R410A	0.0	Unit: lbs	Total Refrigerant:	

Изберете "Визуализация"

Сменя екрана за визуализация

Output

File Preference Tool Help Update Download DXF

District : Europe

Select output item

- ☒ Detail
- ☒ Material list
- ☒ Indoor unit details
- ☒ Outdoor unit details
- ☒ Piping Diagrams
- ☒ Wiring Diagrams
- ☒ Options
- ☒ Piping / Branch kit / Header details
- ☒ User option
- ☒ Room list

Series

☒ VRF system ☐ J ☐ 8RM ☐ Multi System ☐ Single

Report kind

☒ Word(.rtf) ☐ Doc ☐ PDF

☒ CSV ☐ CSV(QMS) ☐ CSV(Simulation)

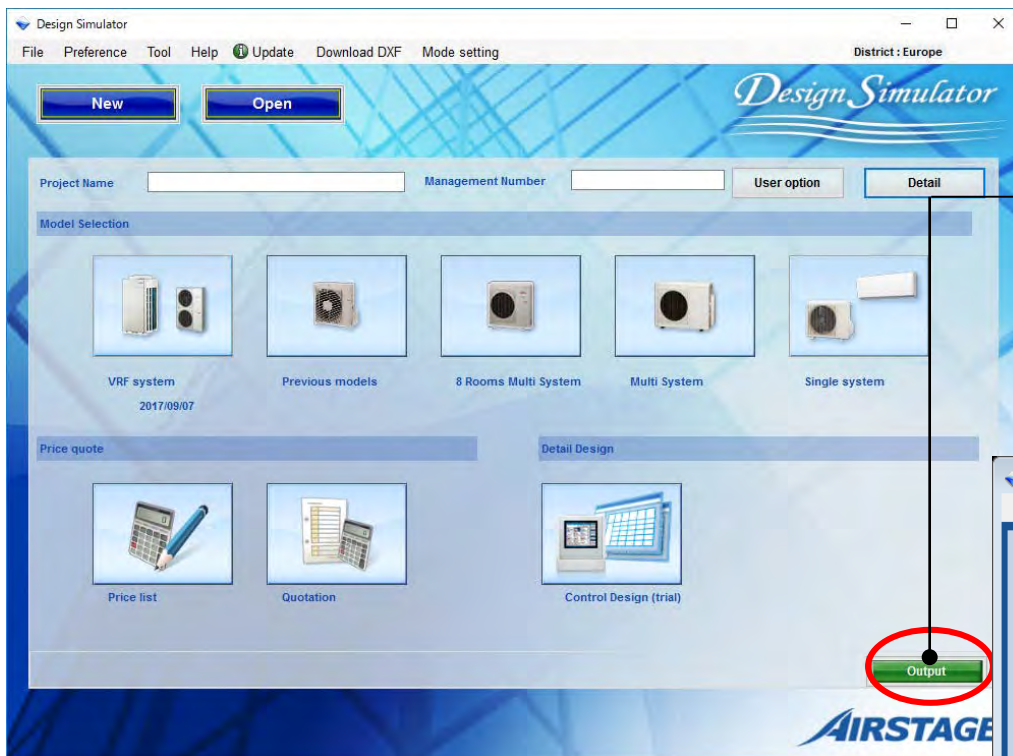
☐ DXF

Indoor Unit / Outdoor unit CAD data

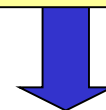
☒ 2D(DXF) ☐ 3D(RFA)

CAD data

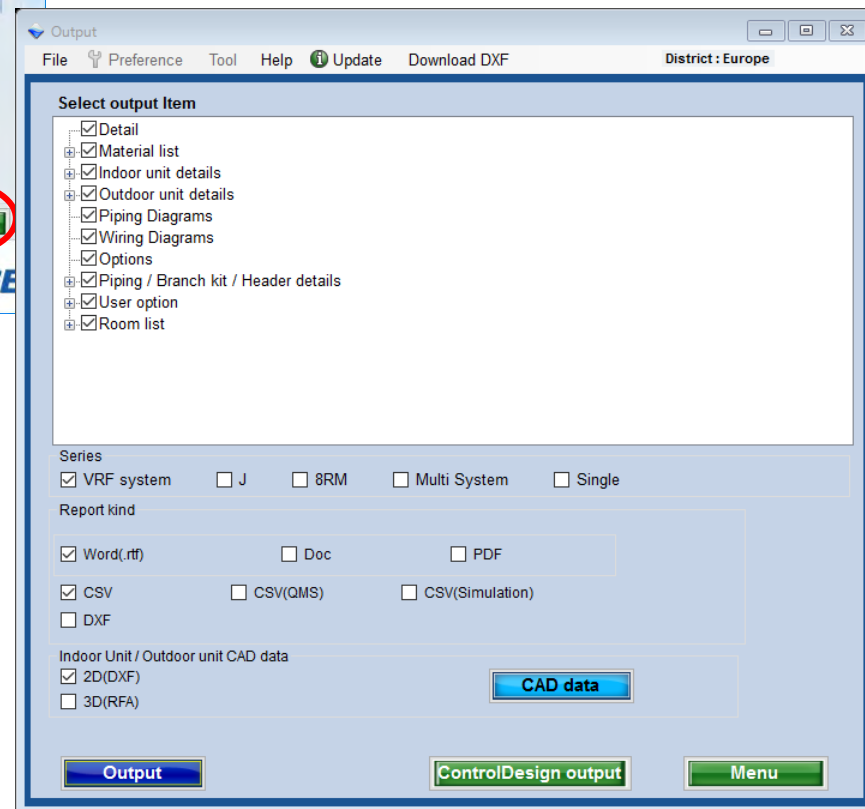
Output ControlDesign output Menu



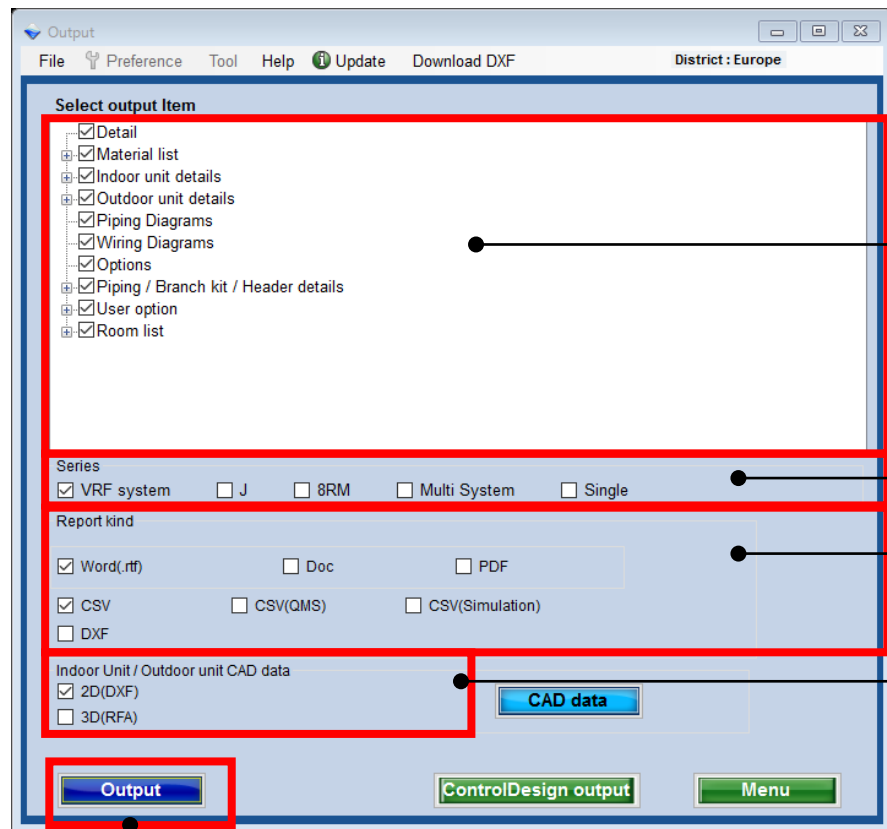
Изберете “Визуализация”



Сменя екрана за извеждане



Извеждане (1/2)



Отметнатият елемент се извежда
визуализира

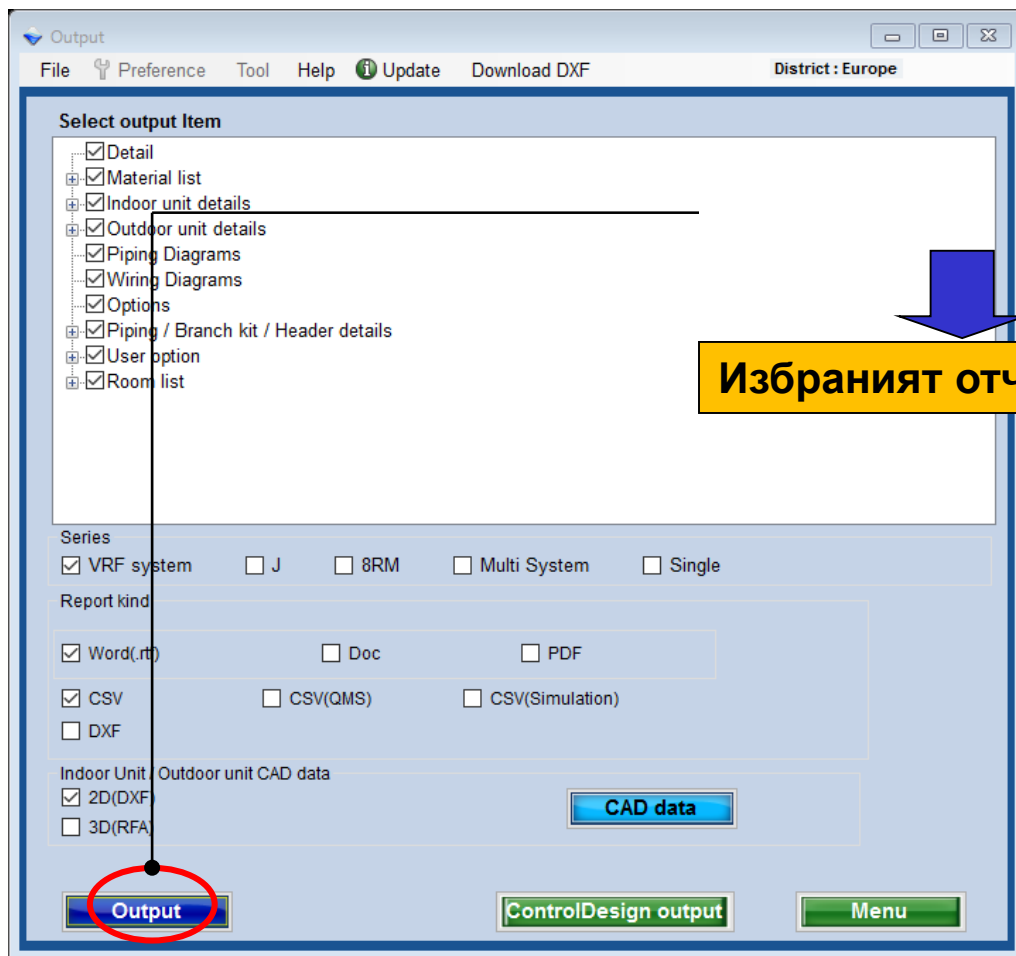
Изберете серия

Изберете вид на отчета *
Вижте т.1-6

Изберете CAD данни вътр./
външно тяло *Вижте т.7-8

Изберете Изведи
Визуализирай

Извеждане (2/2)



Изберете „Визуализиране“

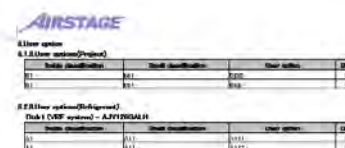
Избраният отчет може да се запази



4.Схема на тръбите



8.Потр.опции



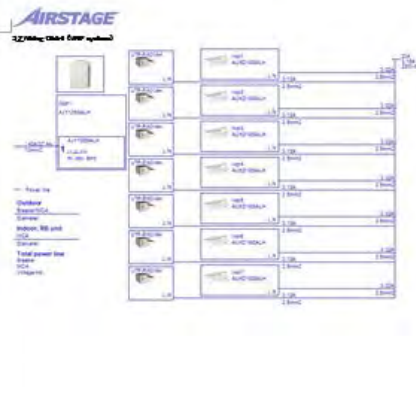
AIRSTAGE



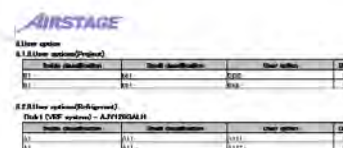
4.Схема на тръбите



6.Опции



8.Потр.опции



9.Списък стаи

4.Схема на тръбите



6.Опции



7.Piping / Branch kit / Header details

7.1.Branch kit details

Series:VRF system

Name	Model	UTP-BX300A	UTP-BX300A
Dx01	A-JY125GALH	4	2

7.2.Header details

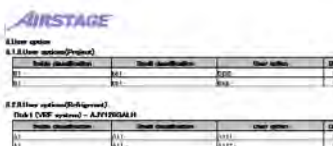
7.3.Piping details

Series:VRF system

Name	Model	9.52	12.70	15.88	18.05	22.22	28.58
Dx01	A-JY125GALH	0.0	0.0	0.0	0.0	0.0	0.0

Name	Refing (R10A)(Da)	Add Refing (R10A)(Da)	Total Refing (R10A)(Da)
Dx01	25.0	13.0	41.0

8.Потр.опции



9.Списък стаи

Design Simulator

[illegible]

Design Simulator

Схема на тръбите

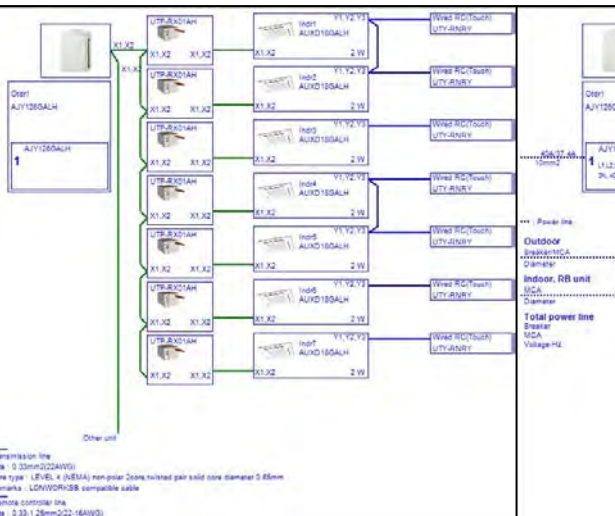


Схема на кабелите (комуникация)

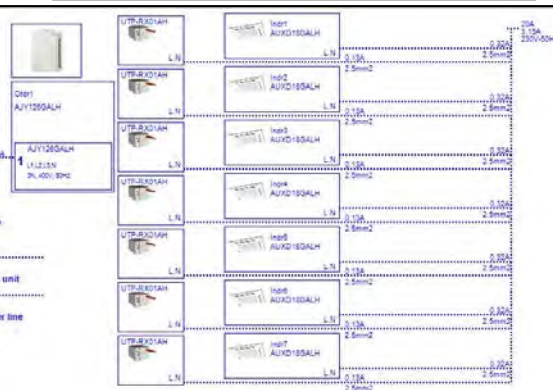


Схема на кабели (захранване)



Схема на тръбите



Схема на кабелите (комуникация)

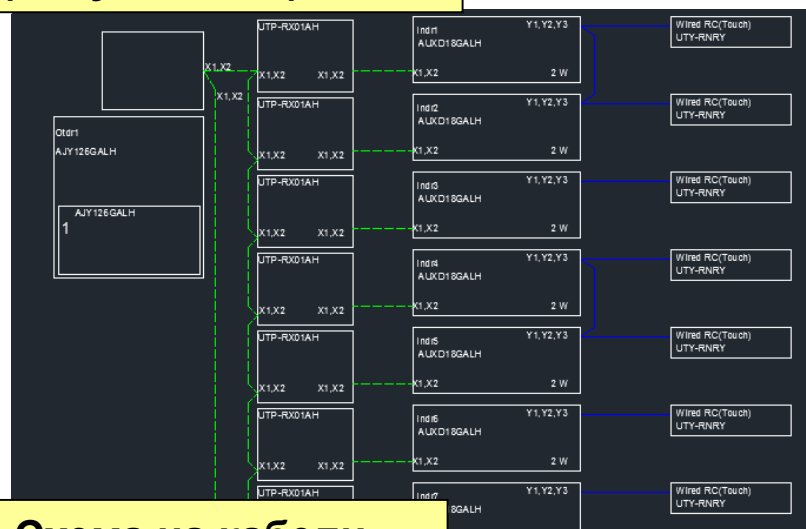


Схема на кабели (захранване)

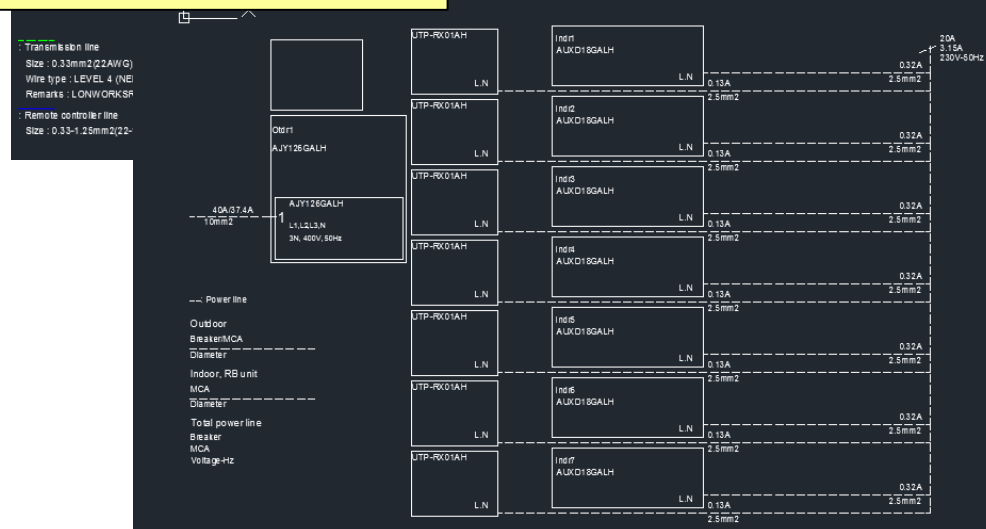
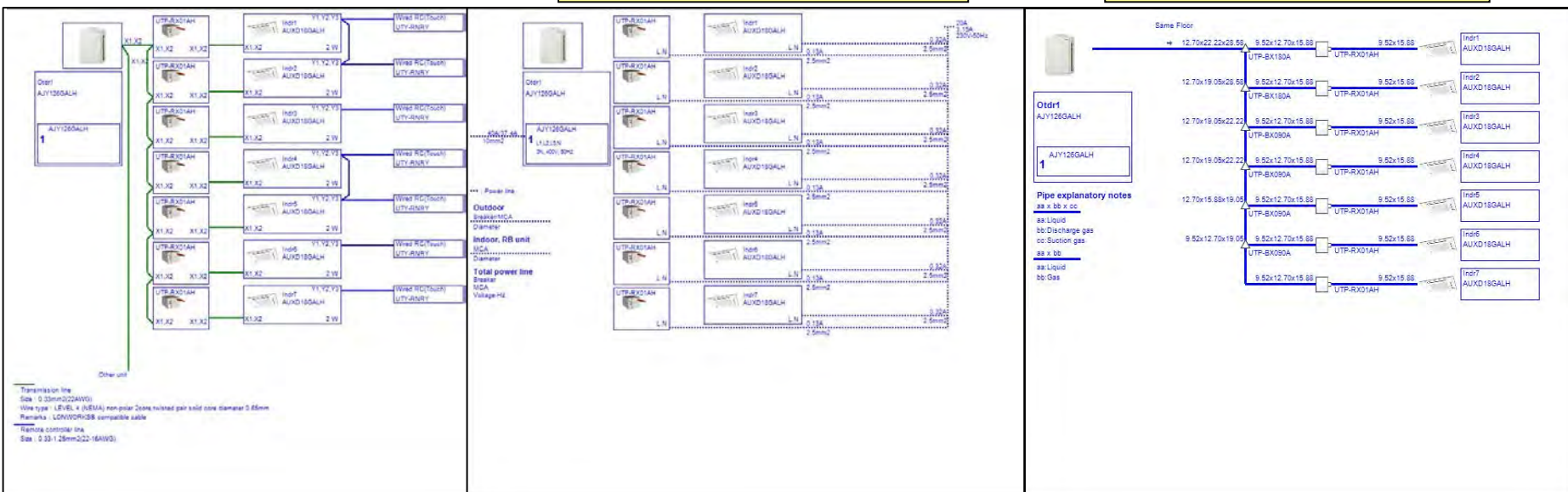
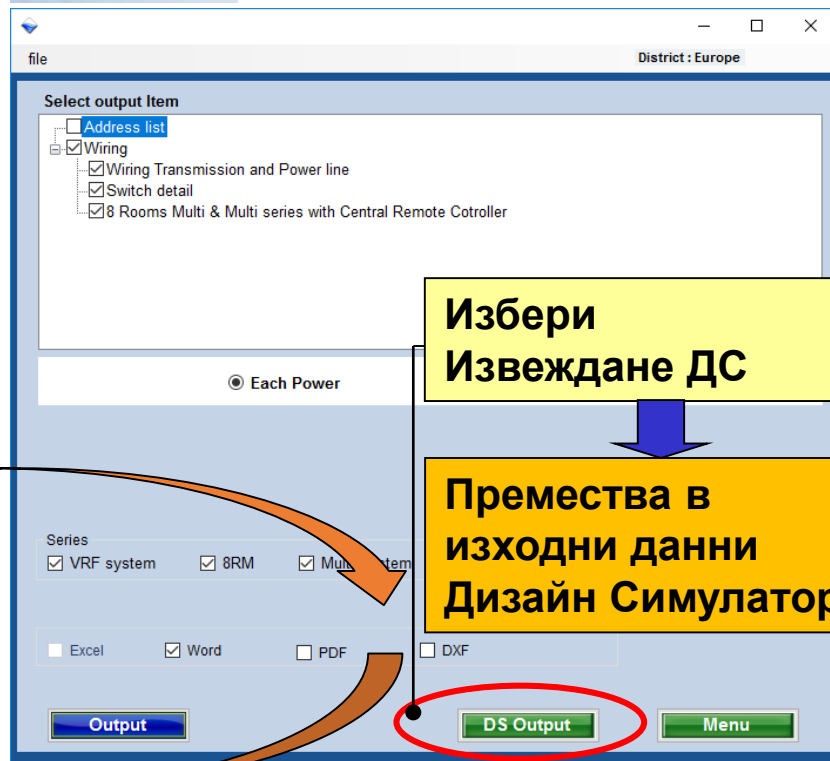
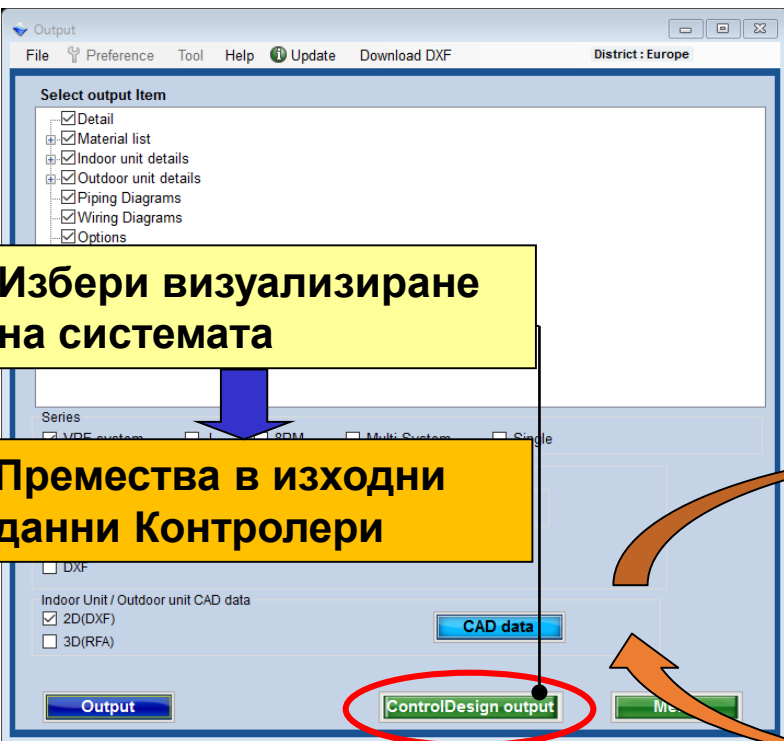
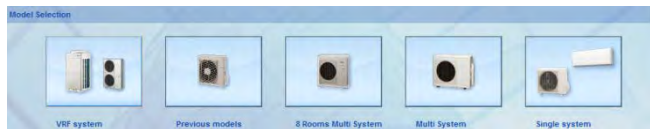


Схема на кабелите (комуникация)

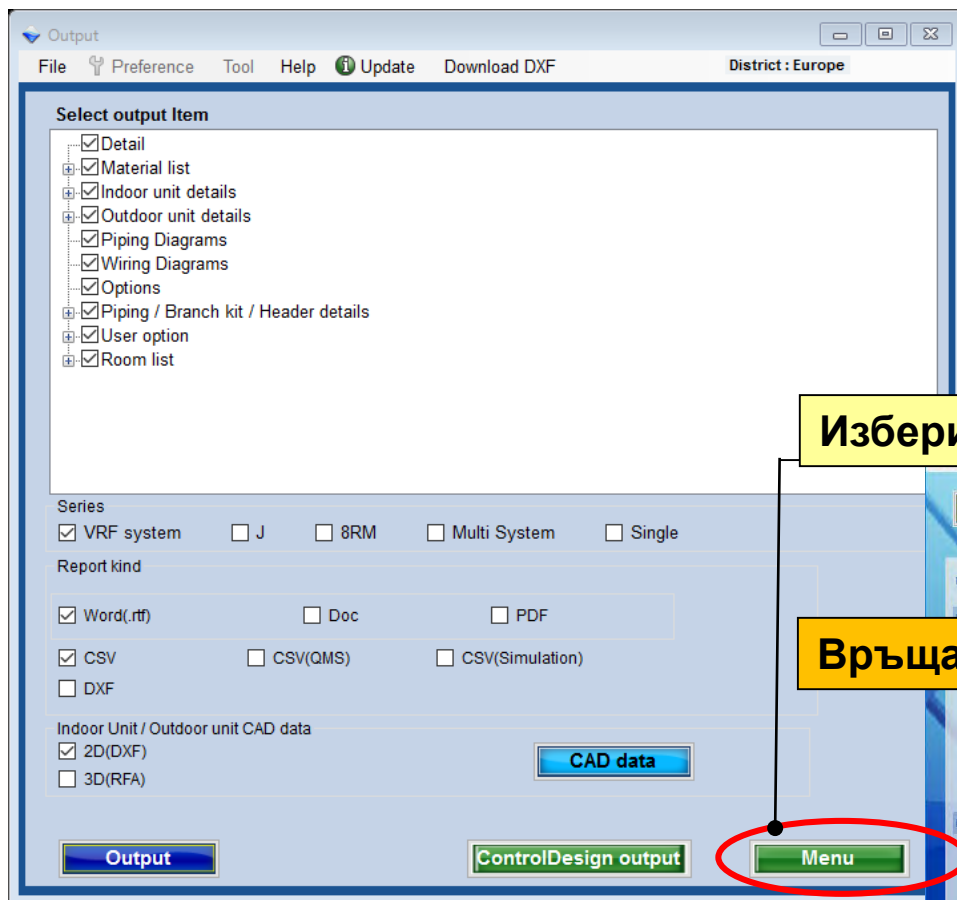
Схема на кабели (захранване)



Извеждане на системата

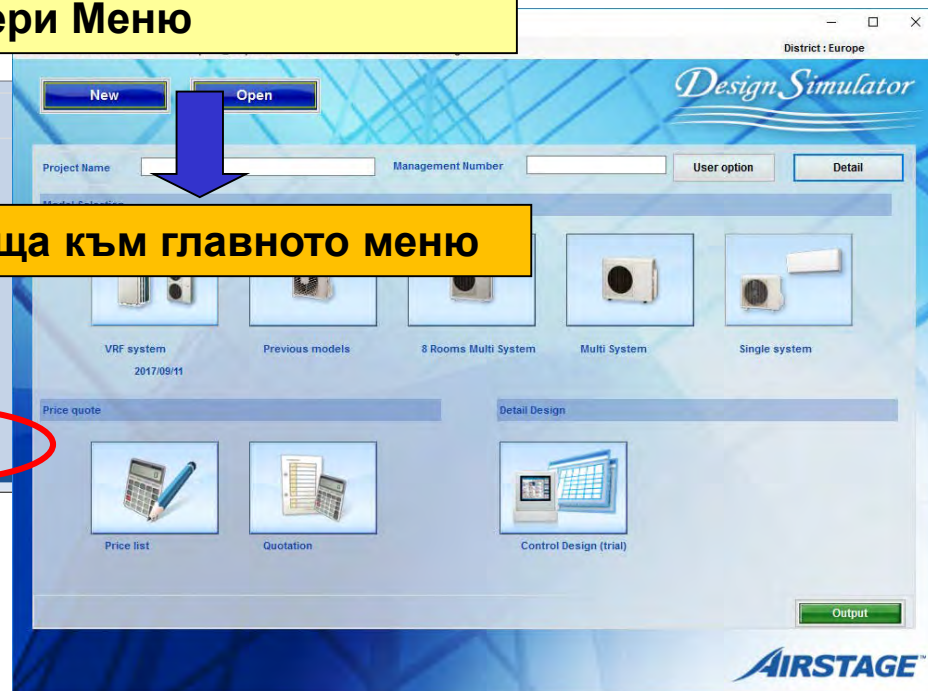


Меню



Избери Меню

Връща към главното меню



CAD данни (1/2)

Избери CAD данни
вътрешно/външно тяло

Отваря CAD данни

Избери вида CAD

Дата на създаване

Избери всички

Може да маркира всички елементи

Избери списък

Извеждат се само избраните CAD
данни

CAD data

Check all

CAD Kind

2D(DXF)

Series

All

Creation date

2017/03/07

2017/09/07

Output

Series

Unit

Type

Model

File

Creation date

ML

Indoor

ML

Indoor

ML

Indoor

ML

Indoor

ML

Indoor

ML

Indoor

ML

Indoor

ML

Indoor

ML

Indoor

ML

Indoor

ML

Indoor

ML

Indoor

ML

Indoor

ML

Indoor

ML

Indoor

ML

Indoor

ML

Indoor

ML

Indoor

ML

Indoor

ML

Indoor

ML

Indoor

ML

Indoor

ML

Indoor

ML

Indoor

ML

Indoor

ML

Indoor

ML

Indoor

ML

Indoor

ML

Indoor

ML

Indoor

ML

Indoor

ML

Indoor

ML

Indoor

ML

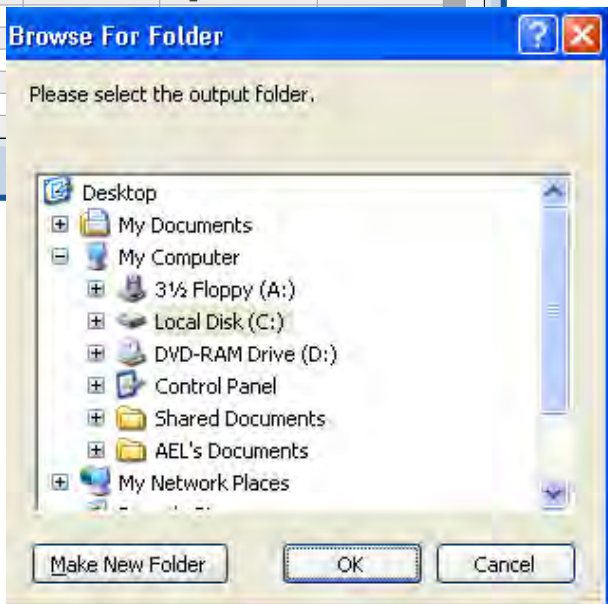
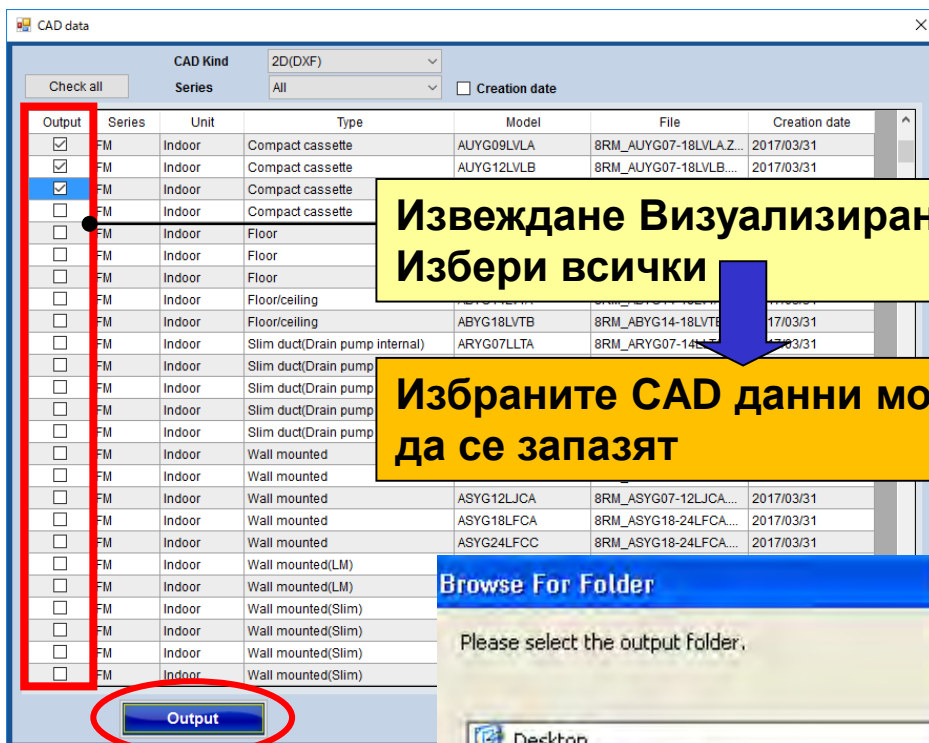
Indoor

Output	Series	Unit	Type	Model	File	Creation date
<input type="checkbox"/>	ML	Indoor	Compact cassette	AUYG18LVLB	M_AUYG07-18LVLB.ZIP	2017/03/31
<input type="checkbox"/>	ML	Indoor	Compact Cassette(1Phase Triple)	AUYG18LVLB	SM_AUYG18LVLB.ZIP	2017/03/31
<input type="checkbox"/>	ML	Indoor	Compact Cassette(1Phase Twin)	AUYG18LVLB	SM_AUYG18LVLB.ZIP	2017/03/31
<input type="checkbox"/>	ML	Indoor	Compact Cassette(1Phase Twin)	AUYG22LVLA	SM_AUYG22LVLA.ZIP	2017/03/31
<input type="checkbox"/>	ML	Indoor	Compact Cassette(1Phase Twin)	AUYG24LVLA	SM_AUYG24LVLA.ZIP	2017/08/31
<input type="checkbox"/>	ML	Indoor	Compact Cassette(3 Phase Dou...	AUYG18LVLB	SM_AUYG18LVLB.ZIP	2017/03/31
<input type="checkbox"/>	ML	Indoor	Compact Cassette(3 Phase Dou...	AUYG22LVLA	SM_AUYG22LVLA.ZIP	2017/03/31
<input type="checkbox"/>	ML	Indoor	Compact Cassette(3 Phase Twin)	AUYG18LVLB	SM_AUYG18LVLB.ZIP	2017/03/31
<input type="checkbox"/>	ML	Indoor	Compact Cassette(3 Phase Twin)	AUYG22LVLA	SM_AUYG22LVLA.ZIP	2017/03/31
<input type="checkbox"/>	ML	Indoor	Compact Cassette(3 Phase Twin)	AUYG24LVLA	SM_AUYG24LVLA.ZIP	2017/08/31

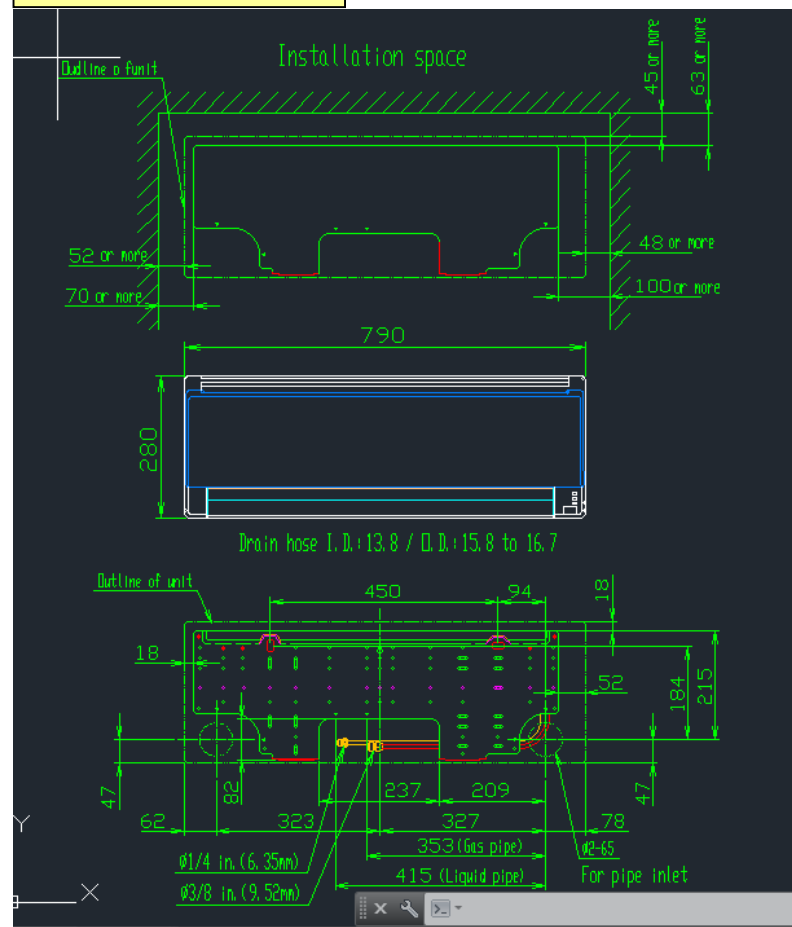
Output

Cancel

CAD данни (2/2)

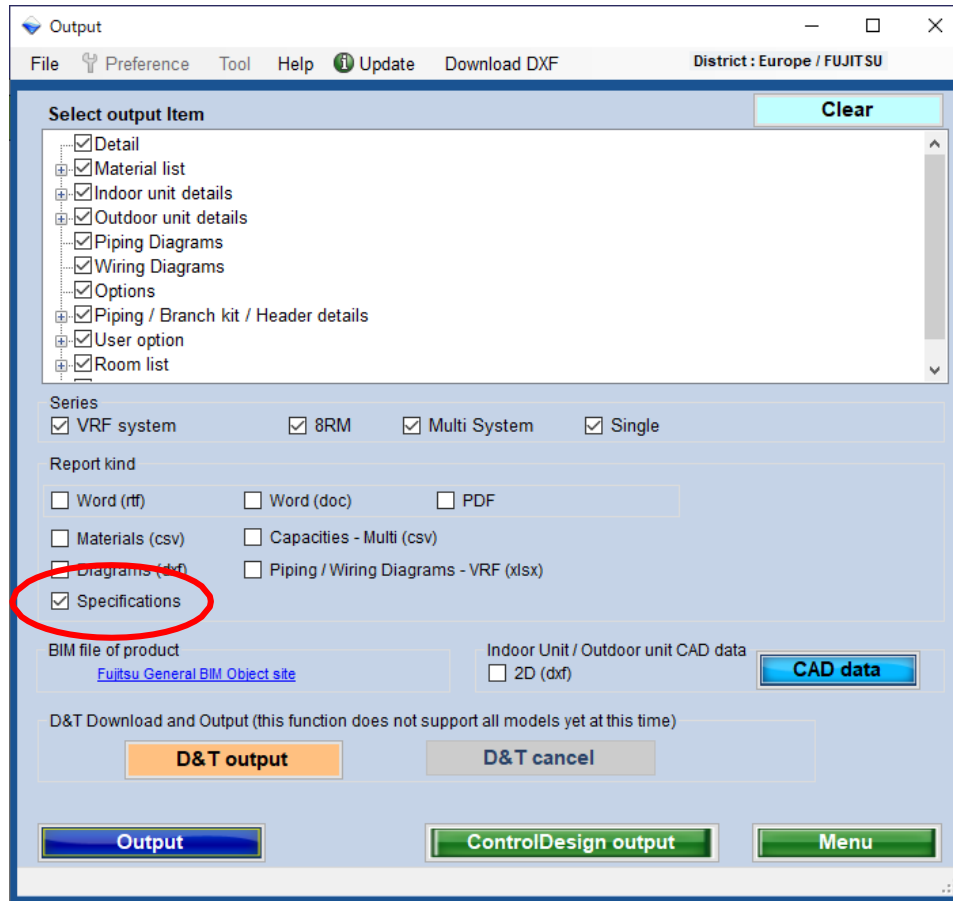


CAD файл

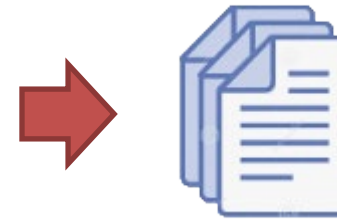


Specifications

Output a specifications document file automatically combined ones of selected models.



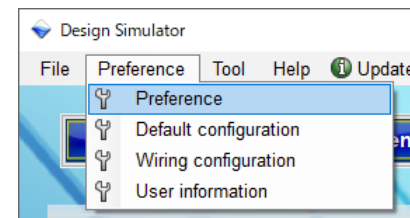
Output



One file for a project

[setting]

Source folder containing document files for models is specified in Preference at Menu.



Specs



[note]

Specification document file for each model have to be prepared.