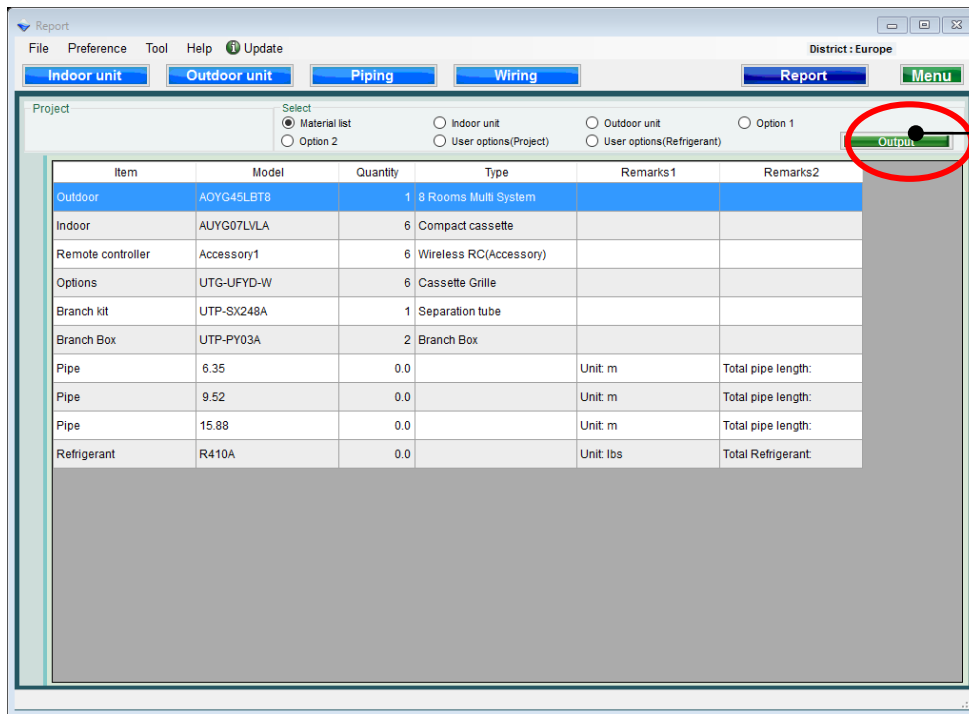
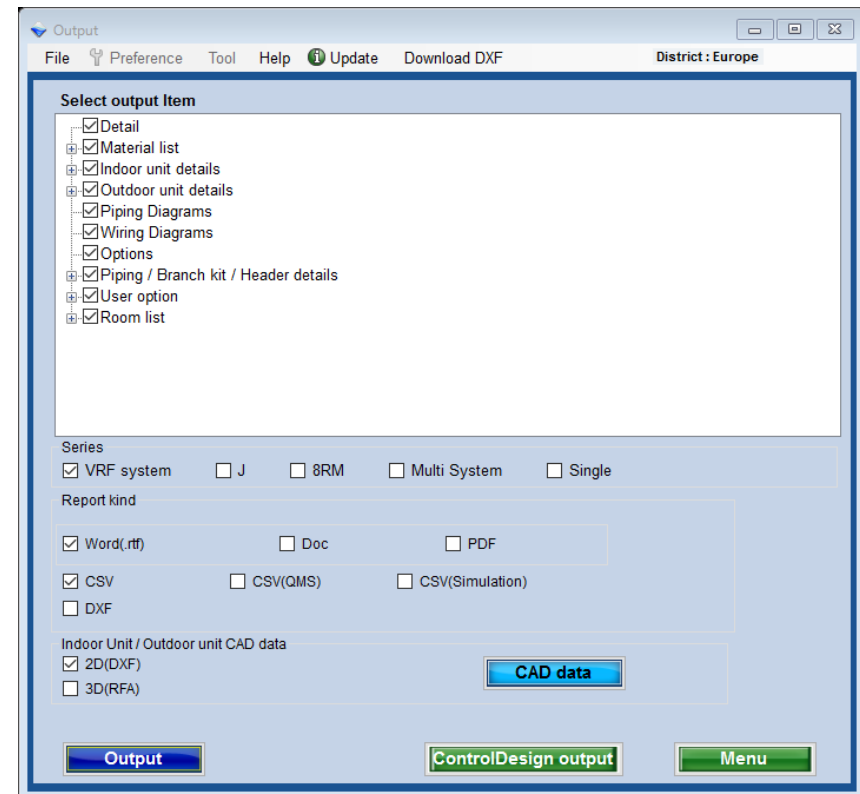


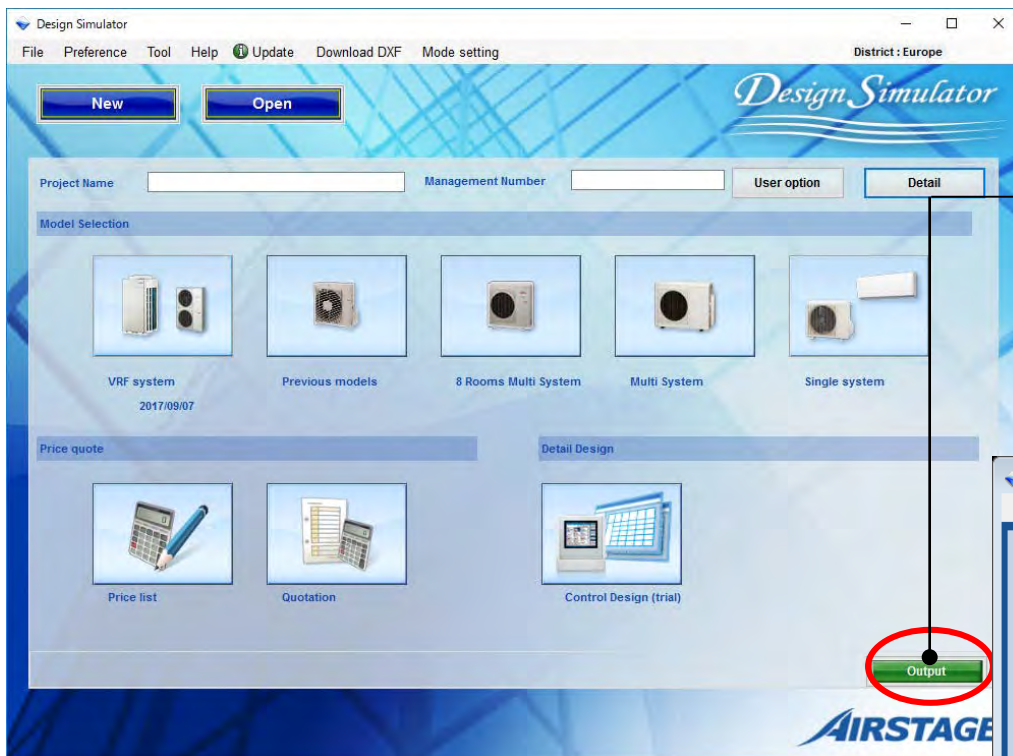
Prikaz



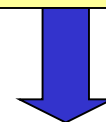
Izaberite "Prikaz"

Izmene na ekranu prikaz

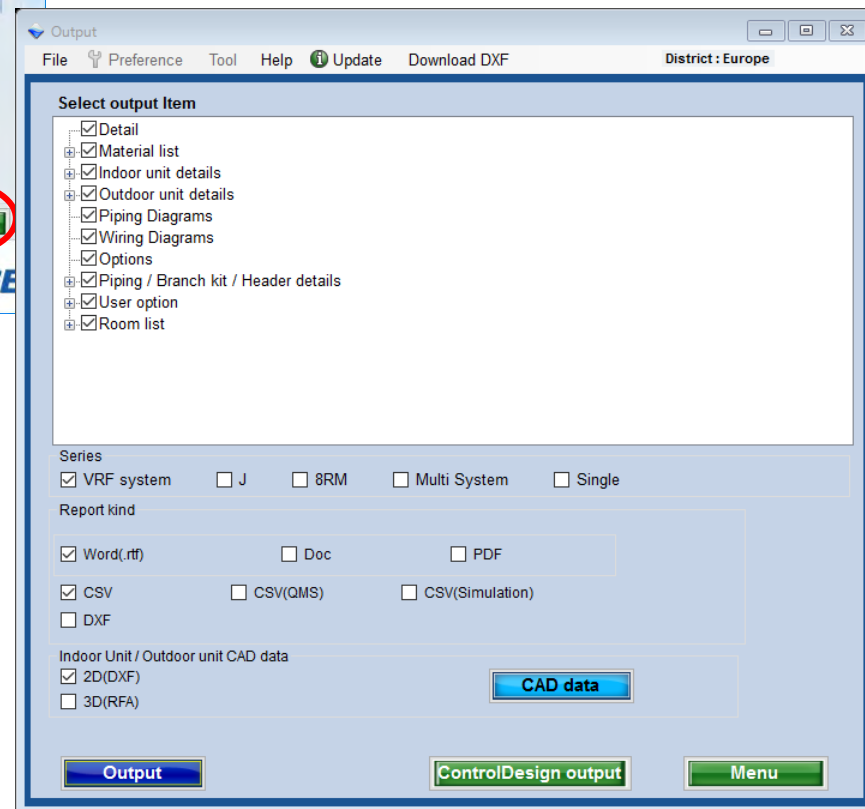




Izaberite "Prikaz"



Izmene na ekranu prikaz



Prikaz (1/2)

The screenshot shows the 'Output' window of the Design Simulator. It has a menu bar with 'File', 'Preference', 'Tool', 'Help', 'Update', and 'Download DXF'. The title bar says 'District : Europe'. The main area is titled 'Select output Item' and contains a tree view with the following items, all of which are checked: Detail, Material list, Indoor unit details, Outdoor unit details, Piping Diagrams, Wiring Diagrams, Options, Piping / Branch kit / Header details, User option, and Room list. Below this tree view are three sections: 'Series' with options 'VRF system' (checked), 'J', '8RM', 'Multi System', and 'Single'; 'Report kind' with options 'Word(.rtf)' (checked), 'Doc', 'PDF', 'CSV' (checked), 'CSV(QMS)', 'CSV(Simulation)', and 'DXF'; and 'Indoor Unit / Outdoor unit CAD data' with options '2D(DXF)' (checked) and '3D(RFA)'. There is a 'CAD data' button next to the CAD data options. At the bottom, there are three buttons: 'Output' (highlighted with a red box), 'ControlDesign output', and 'Menu'. Callout lines connect various parts of the interface to yellow instruction boxes on the right.

Stavke na koje se provera odnosi su prikazane.

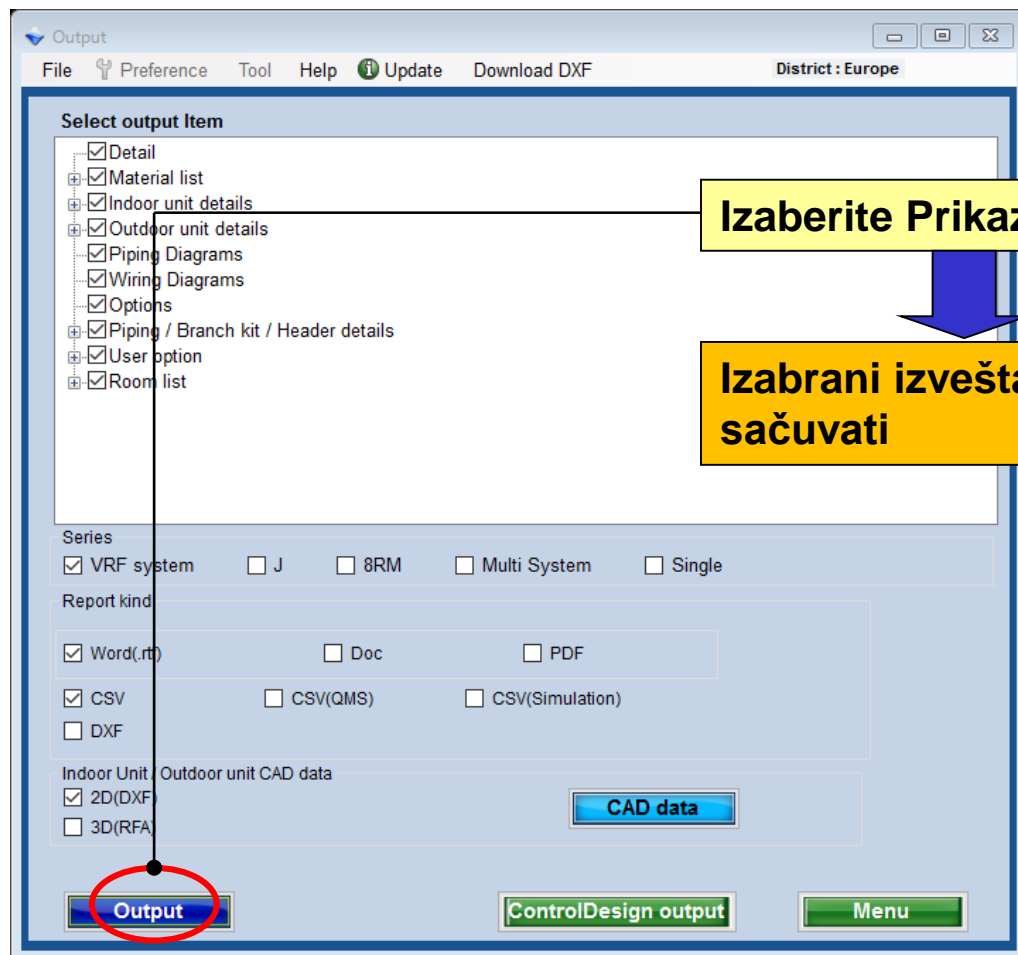
Izaberite serije

Izaberite vrstu izveštaja
***Pogledajte od 1 to 6**

Izaberite CAD date
unutašnje/spoljne jedinice
***Pogledajte 7 to 8**

Izaberite prikaz

Prikaz (2/2)



4. Dijagrami cevovoda



7.Cevovod / Razvodna kutija / detalji zaglavlja



7.2.Header details

7.3.Piping details

Series:VRF system

Name	Model	9.52	12.70	15.88	18.05	22.22	28.58
Drp:1	AJ112GALH	0.0	0.0	0.0	0.0	0.0	0.0

Name	Refing (R410A)(ha)	Add Refing (R410A)(ha)	Total Refing (R410A)(ha)
Drp:1	26.0	13.0	41.0

7.4.Branch sub details

7.5.RB details

Series:VRF system

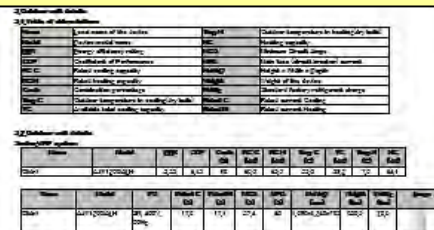
Name	Model	UTP-RV01AH	UTP-RV01BH	UTP-RV01CH	UTP-RV01DH
Drp:1	AJ112GALH	0	0	0	0

9. Lista prostorija



2. Detalji unutrašnjih jedinica

4. Dijagrami cevovoda

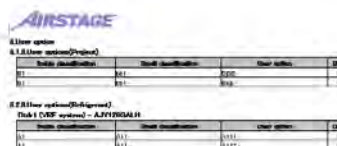


5. Dijagrami kabliranja(Strujni vod)

7. Cevovod / Razvodna kutija / detalji zaglavlja



8. Korisničke opcije



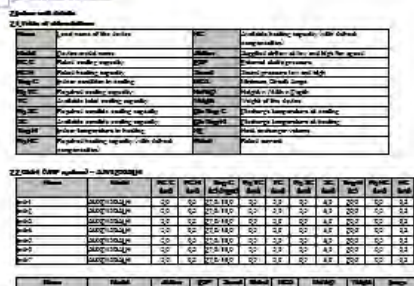
7.4.Branch box details
7.5.RB details

Name	Model	UTP-RXD1AH	UTP-RXD1BH	UTP-RXD1CH	UTP-RXD1DH
Order1	A-IV1260AH	2	0	0	0

9. Lista prostoriya

2. Detalji unutrašnjih jedinica	3.
------------------------------------	----

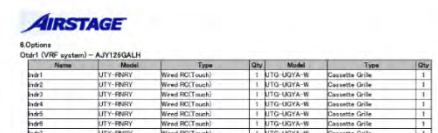
4. Dijagrami cevovoda



5. Dijagrami kabliranja(Strujni vod)



8. Korisničke opcije



7. Cevovod / Razvodna kutija / detalji zaglavlja

7.2 Header details

7.3 Piping details

Series/VRF system

Name	Model	9.52	12.70	15.86	18.05	22.22	28.58
Op-1	A-JY12EGALH	0.0	0.0	0.0	0.0	0.0	0.0

7.4 Branch box details

Series/VRF details

Series/VRF system

Name	Model	UTP-R03IAH	UTP-R03IBH	UTP-R03ICH	UTP-R03IDH
Op-1	A-JY12EGALH				

9. Lista prostoriya



Design Simulator

	A	B	C	D	E	F	G	H	I	J	K	L	M	N	O	P	Q	R	S	T	U	V	W	X	Y	Z
1	Item	Location	Description	Quantity	Unit	Price	Total	Remarks																		
2	Material	Warehouse	100kg	100	kg	1000	100000	100000																		
3	Material	Warehouse	100kg	100	kg	1000	100000	100000																		
4	Material	Warehouse	100kg	100	kg	1000	100000	100000																		
5	Material	Warehouse	100kg	100	kg	1000	100000	100000																		
6	Material	Warehouse	100kg	100	kg	1000	100000	100000																		
7	Material	Warehouse	100kg	100	kg	1000	100000	100000																		
8	Material	Warehouse	100kg	100	kg	1000	100000	100000																		
9	Material	Warehouse	100kg	100	kg	1000	100000	100000																		
10	Material	Warehouse	100kg	100	kg	1000	100000	100000																		
11	Material	Warehouse	100kg																							

Microsoft Word Ribbon																												
File	Home	Insert	Layout	References	Mailings	Review	Developer	Microsoft Word Status Bar																				
Page	1	Word Count	1,234	Words	567	Characters	1,234																					
Font	Calibri (s) 12pt Bold Italic Underline Color Font Face Font Size Paragraph Style Language Direction																											
Paragraph	Bulleted List Numbered List Decrease Indent Increase Indent Left Align Center Align Right Align Justify Align Left Align Right																											
References	Table of Contents Cross-References Indexing & Markup																											
Layout	Columns & Rows Orientation Margins Background Color																											
Developer	Formulas & Macros Controls																											
Microsoft Word Ribbon																												
1	A	B	C	D	E	F	G	H	I	J	K	L	M	N	O	P	Q	R	S	T	U	V	W	X	Y	Z		
2	Page Setup																											
3	Name	Value	100	12.50	15.00	18.00	22.00	28.00																				
4	Unit	AC/1000A	50	50	50	50	50	50																				
5	References																											
6	Name	Using the Add Hyperlink button (Ctrl+K)																										
7	Unit	10	18	21																								
8																												
9																												
10																												
11																												
12																												
13																												
14																												
15																												
16																												
17																												
18																												
19																												
20																												
21																												
22																												
23																												
24																												
25																												
26																												
27																												
28																												
29																												
30																												

Design Simulator

QMS_201709111725.csv - Excel

サインイン

共有

ファイル ホーム 挿入 ページレイアウト 表 データ 校閲 表示 アドイン ACROBAT チーム Q 実行したい作業を入力してください

貼り付け 切り取り コピー 書式のコピー/貼り付け カラースキーム

消去 塗りつぶし 背景色 フォント

折り返して全体を表示する 標準 条件付き書式 テーブルとして書式設定

スタイル

セル

編集

A1 Export design date

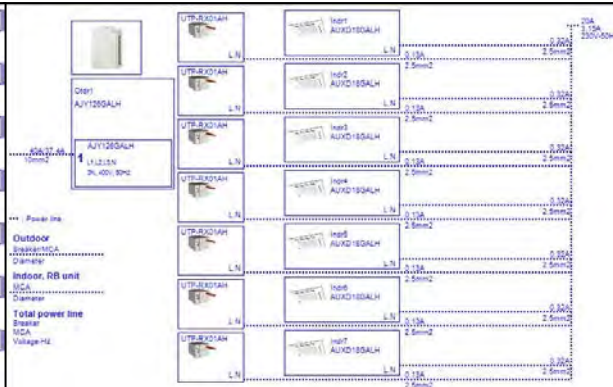
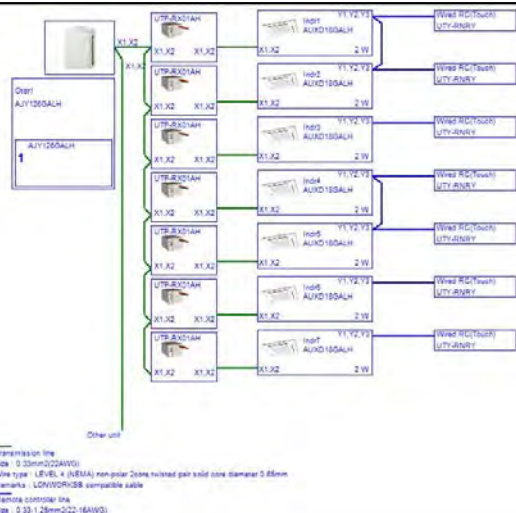
	A	B	C	D	E	F	G	H	I	J	K	L	M	N	O	P	Q	R	S	T
1	Export design date	2017/9/11 0:00																		
2	System version	3.1.3.05																		
3	Data version	2017.08.31																		
4	Export version	2012.08.22																		
5	Project Detail																			
6	Note																			
7	Building																			
8	Created by																			
9	Company																			
10	Address																			
11																				
12	[Outdoor]																			
13	Series	VRF system																		
14	Otdr1	AJY144GALH	AJY144GALH	1																
15	[Indoor]																			
16	Series	VRF system																		
17	Otdr1	Indr1	AUXD18GALH	1																
18	Otdr1	Indr2	AUXD18GALH	1																
19	Otdr1	Indr3	AUXD18GALH	1																
20	Otdr1	Indr4	AUXD18GALH	1																
21	Otdr1	Indr5	AUXD18GALH	1																
22	Otdr1	Indr6	AUXD18GALH	1																
23	Otdr1	Indr7	AUXD18GALH	1																
24	Otdr1	Indr8	AUXD18GALH	1																
25	[Accessory]																			
26	Series	VRF system																		
27	Otdr1	Indr1	UTG-UGYA-W	1																
28	Otdr1	Indr1	UTY-RNRY	1																
29	Otdr1	Indr2	UTG-UGYA-W	1																

準備完了

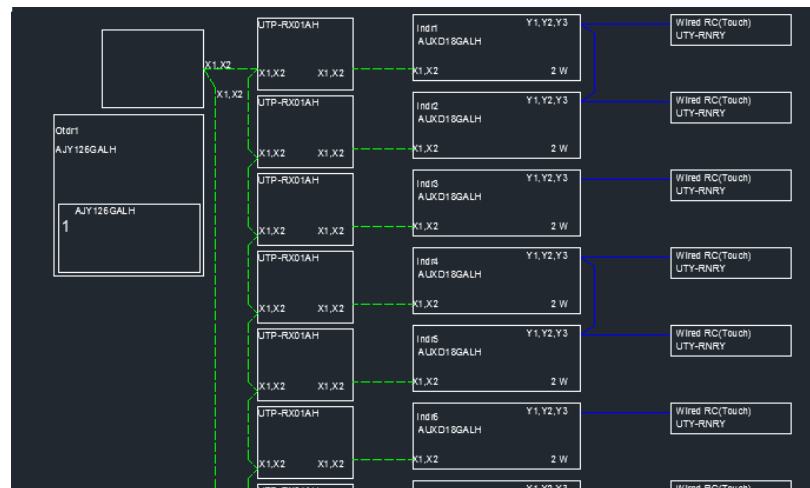
QMS_201709111725

100%

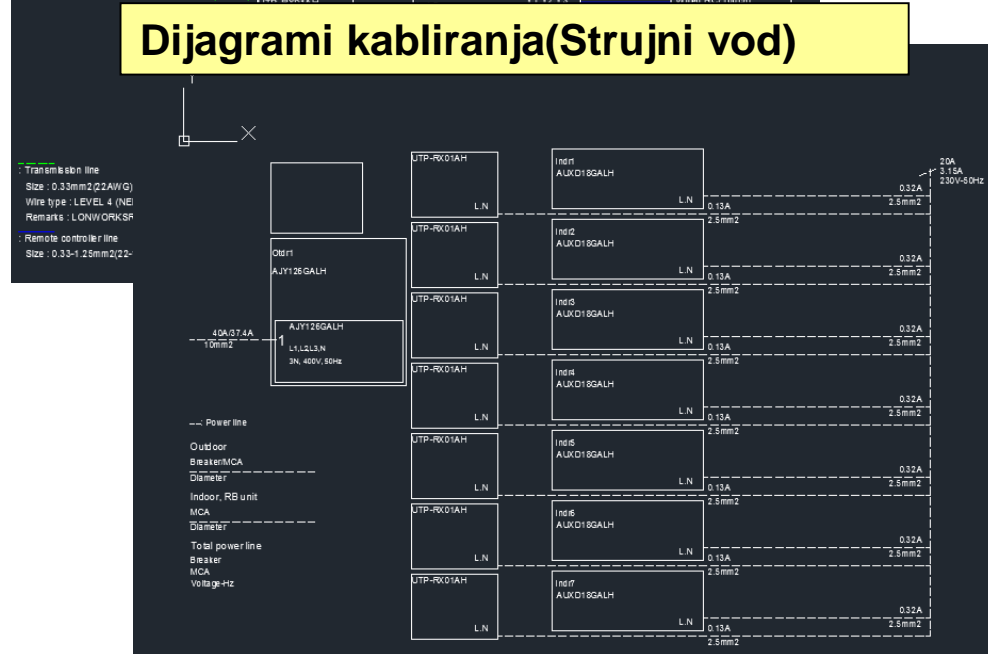
Dijagrami kabliranja(Strujni vod)



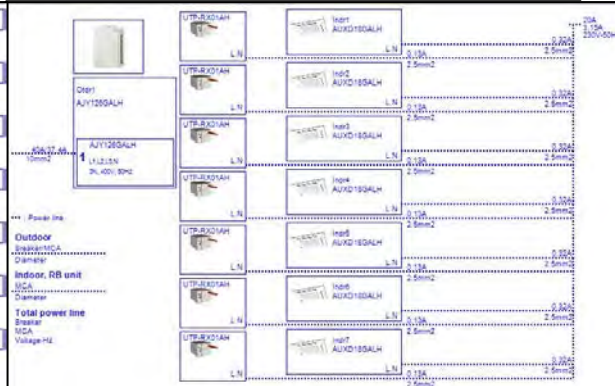
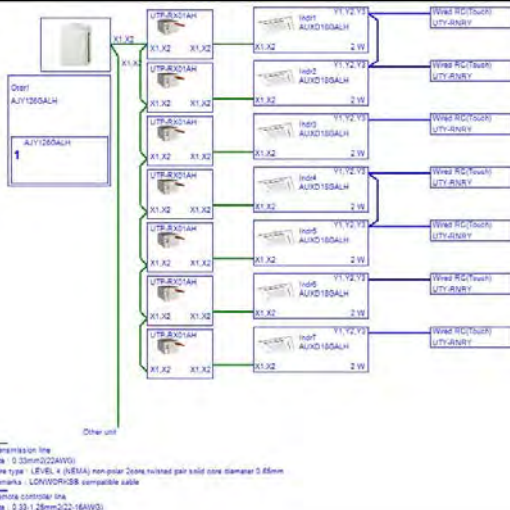
Dijagrami kabliranja (Prenosni vod)



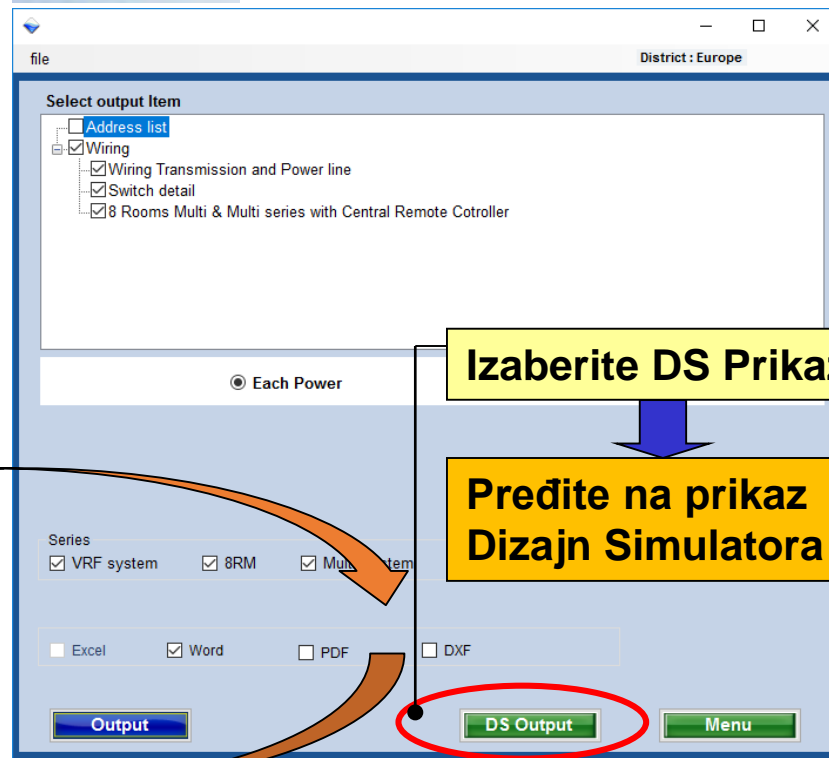
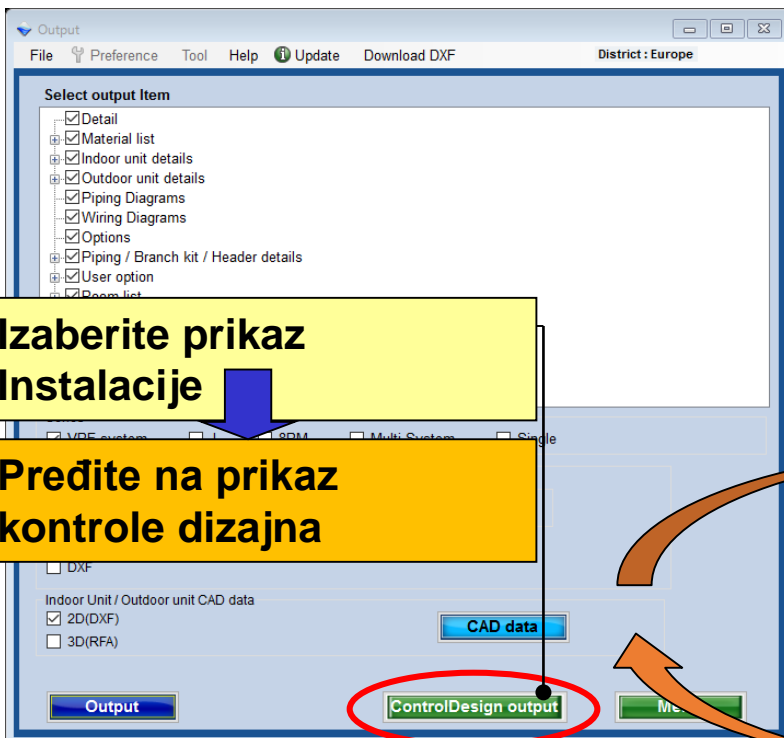
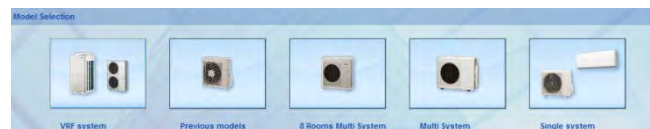
Dijagrami kabliranja(Strujni vod)



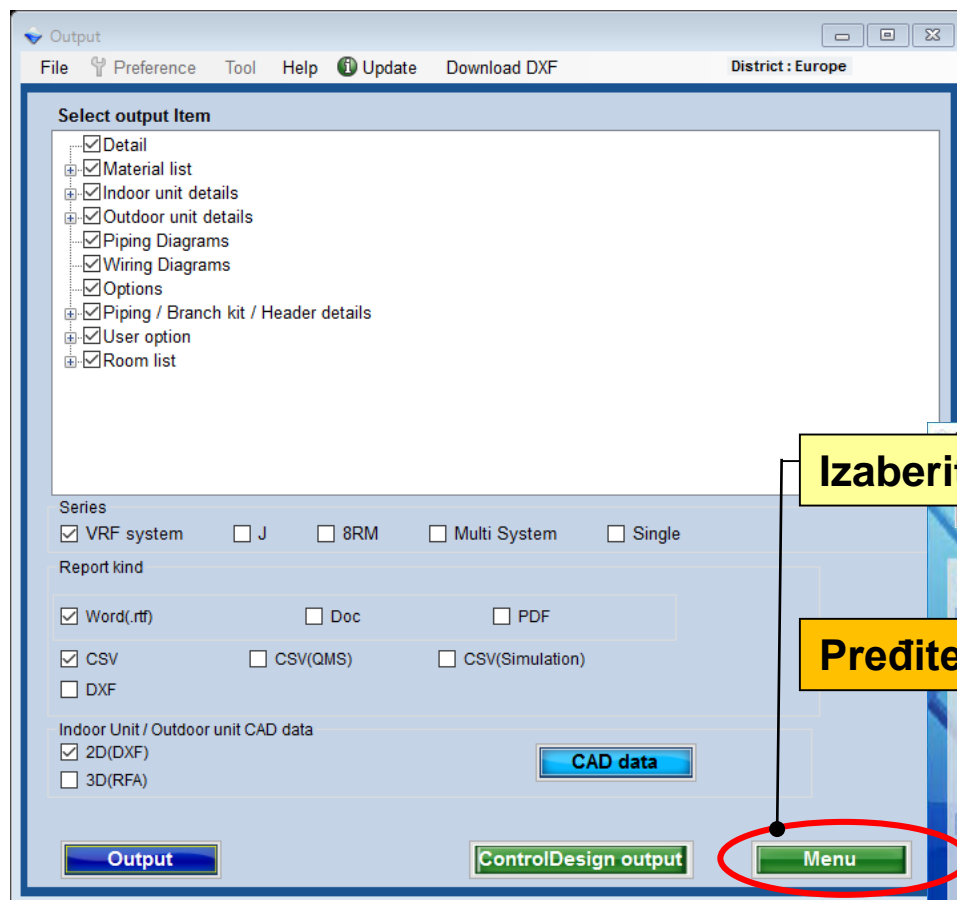
Dijagrami kabliranja(Strujni vod)



Prikaz Inсталacije

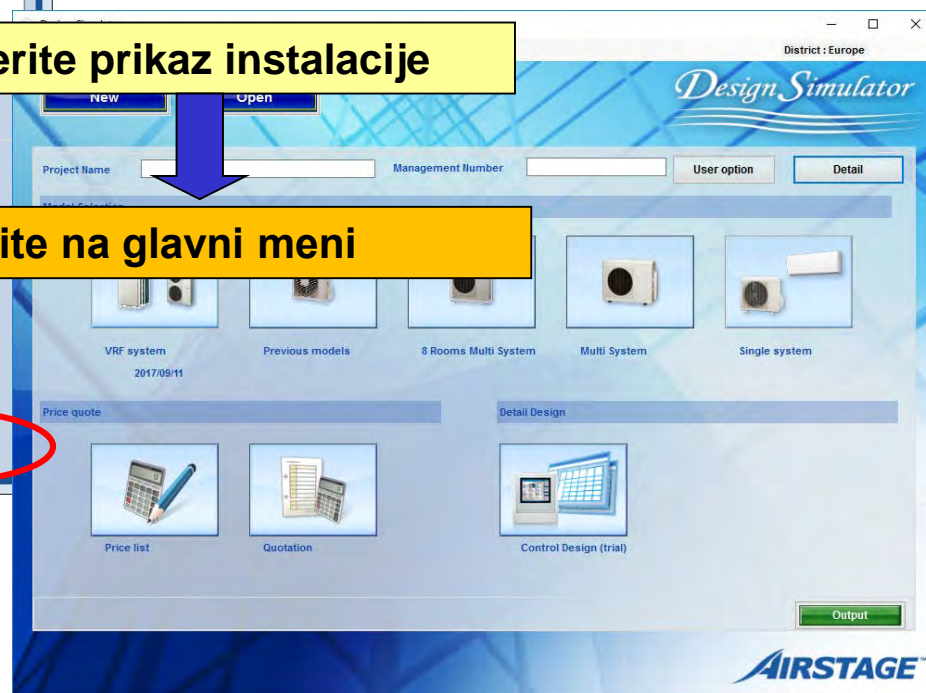


Meni



Izaberite prikaz instalacije

Pređite na glavni meni



Izaberite CAD datum unutrašnje/spoljne jedinice

Otvorite CAD datum

Izaberite vrstu CAD • Serije

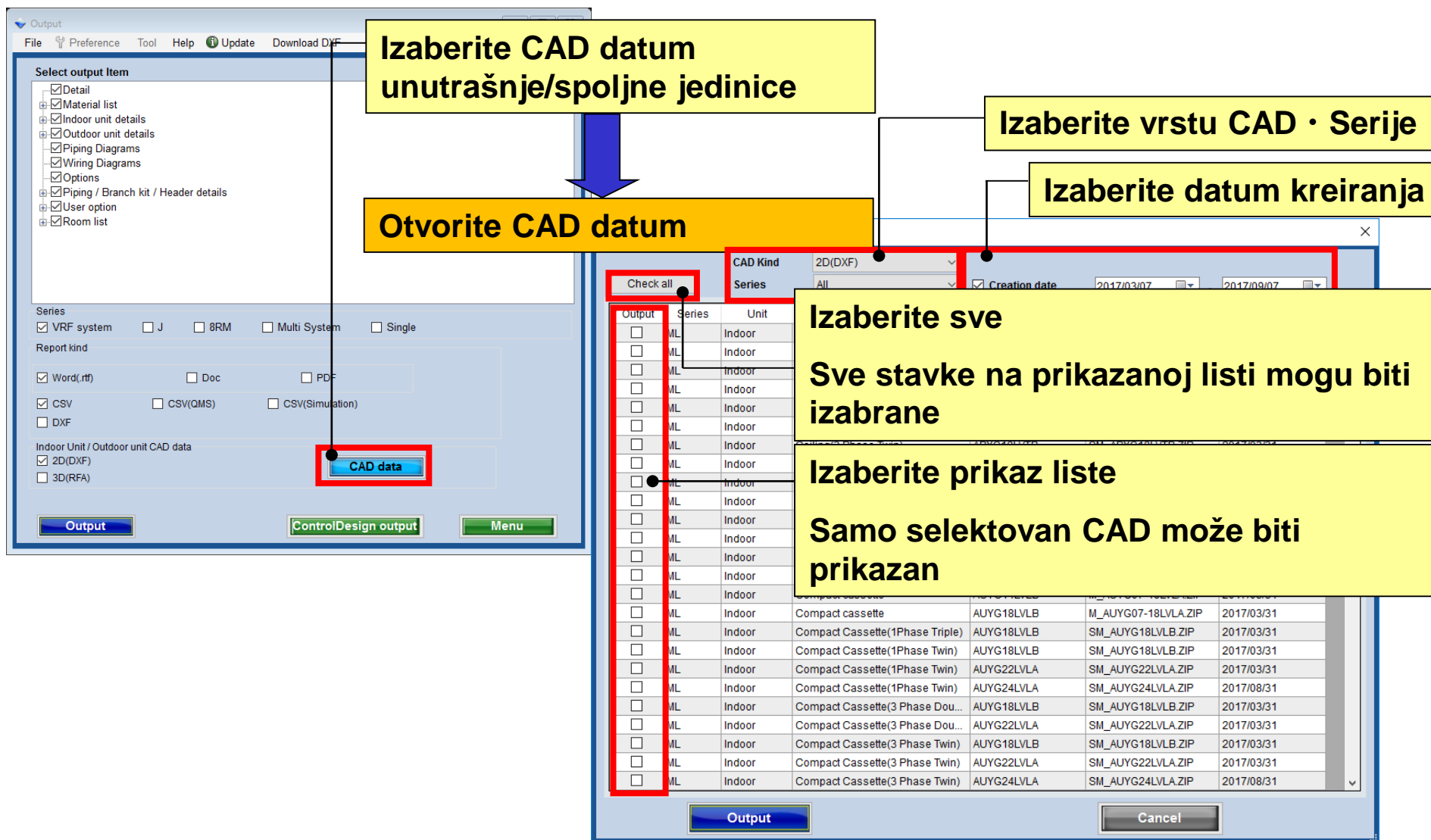
Izaberite datum kreiranja

Izaberite sve

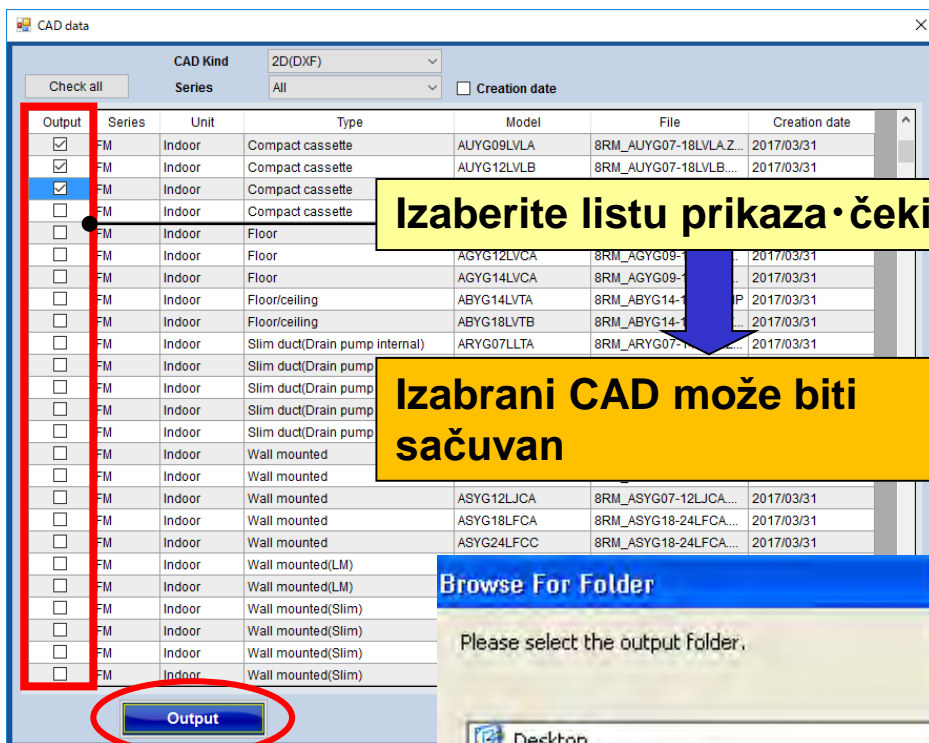
Sve stavke na prikazanoj listi mogu biti izabrane

Izaberite prikaz liste

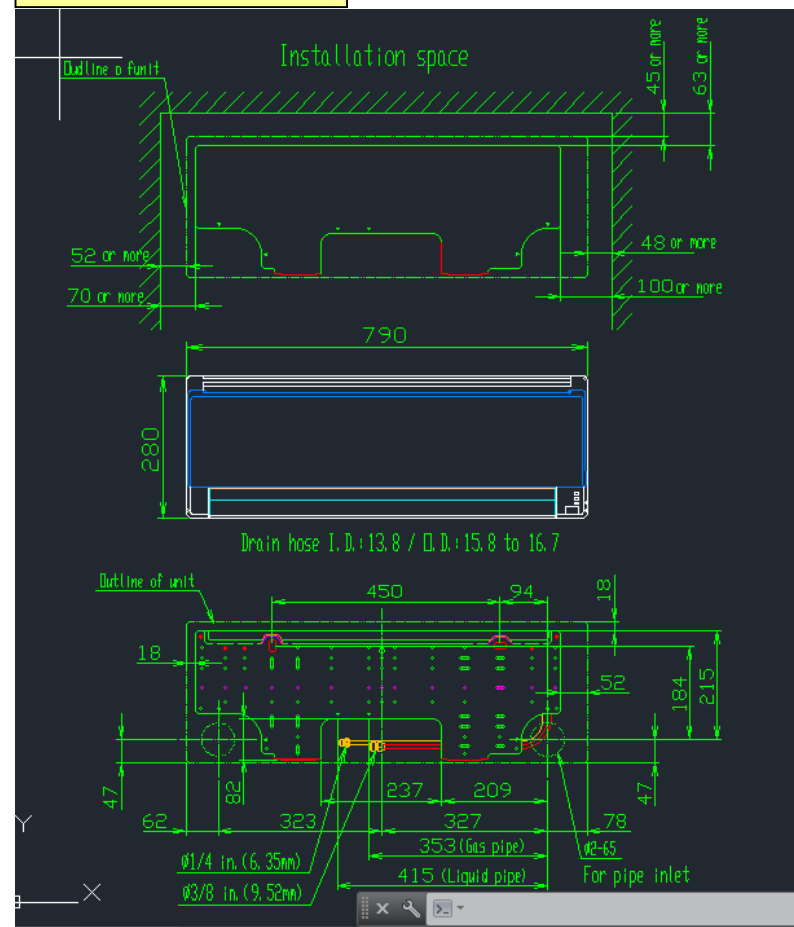
Samo selektovan CAD može biti prikazan



CAD datum (2/2)

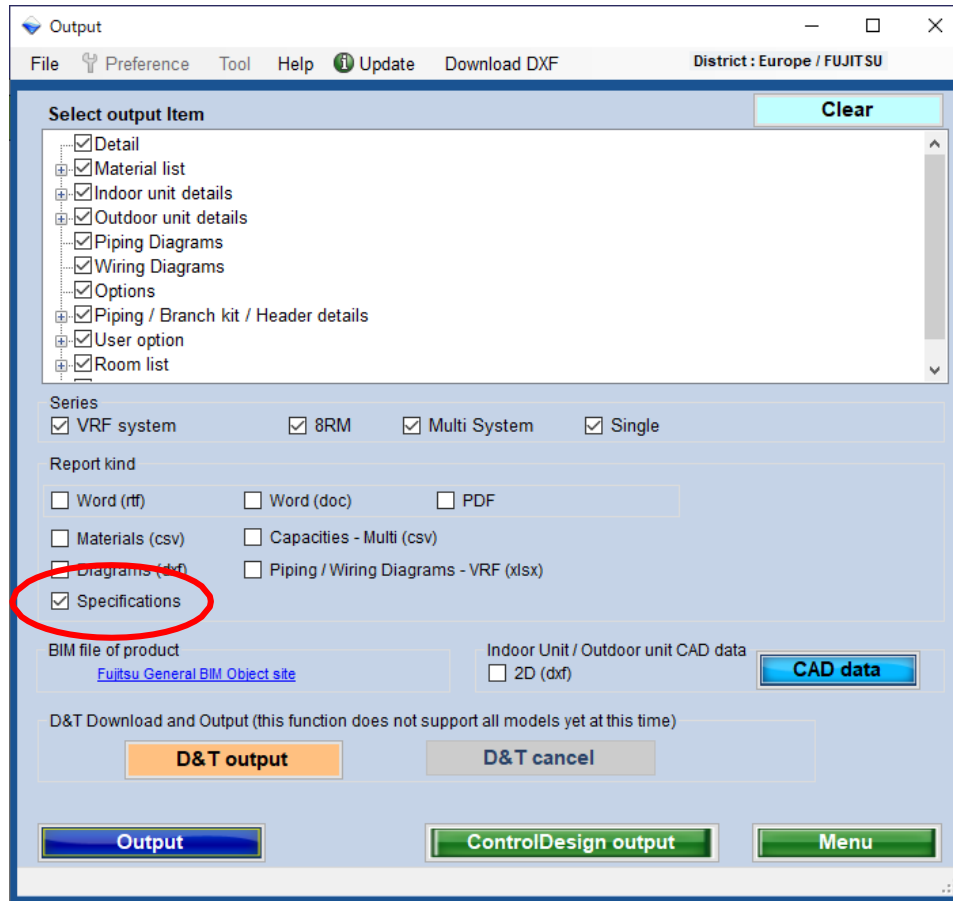


CAD Fajl

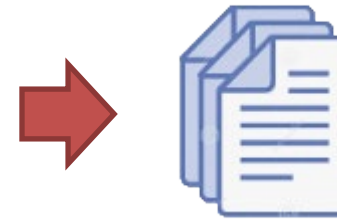


Specifications

Output a specifications document file automatically combined ones of selected models.



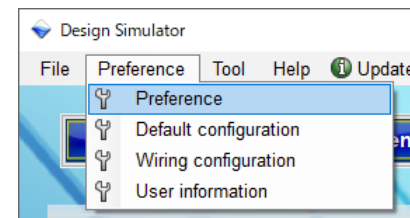
Output



One file for a project

[setting]

Source folder containing document files for models is specified in Preference at Menu.



Specs



[note]

Specification document file for each model have to be prepared.