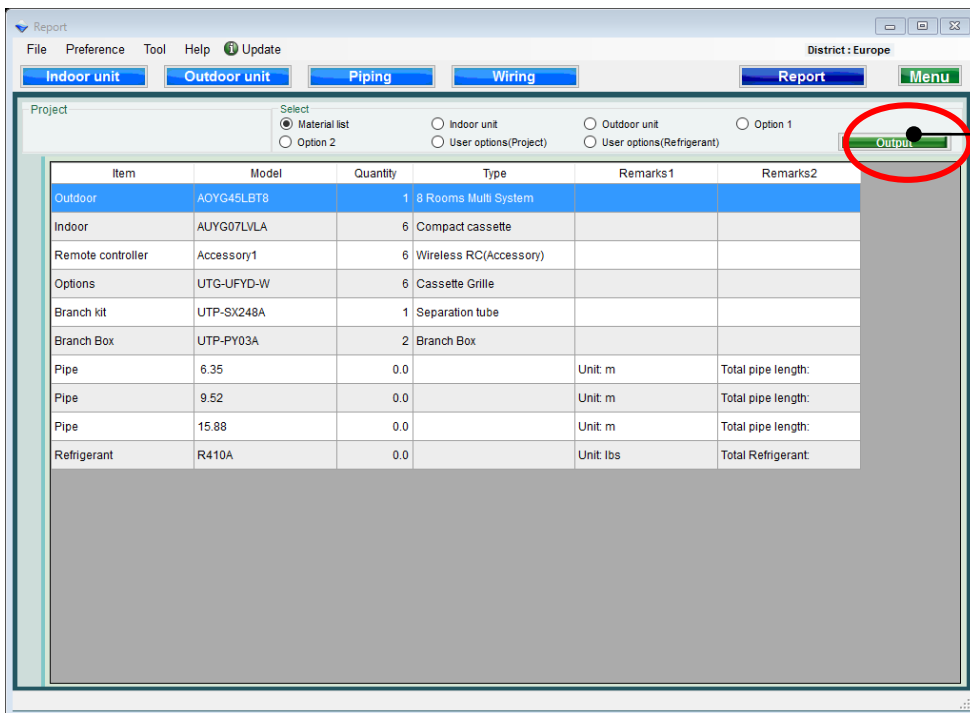


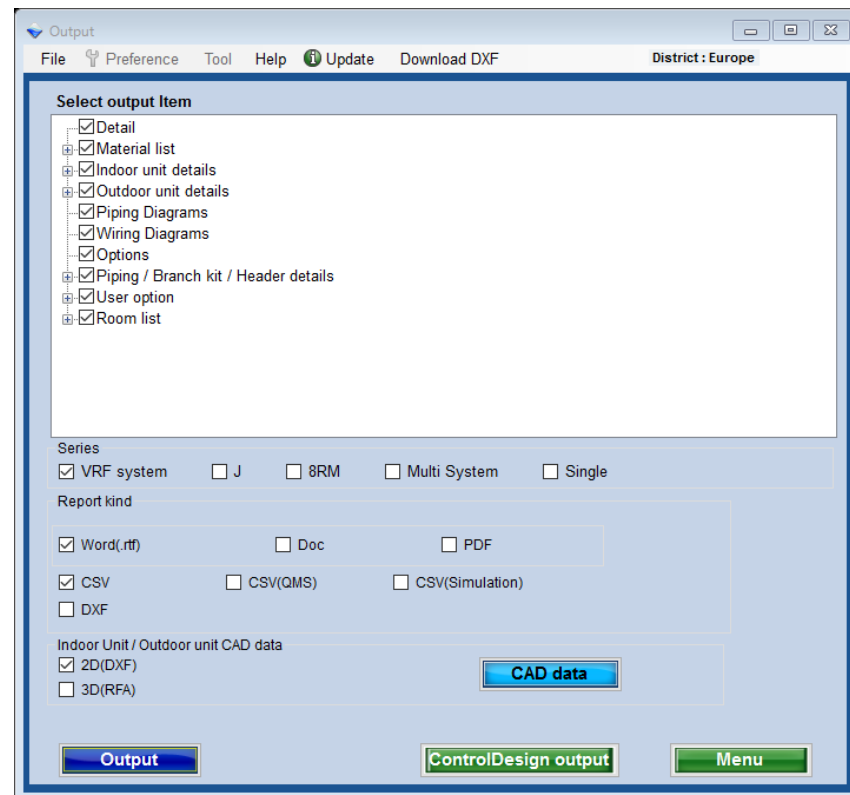
Eksport

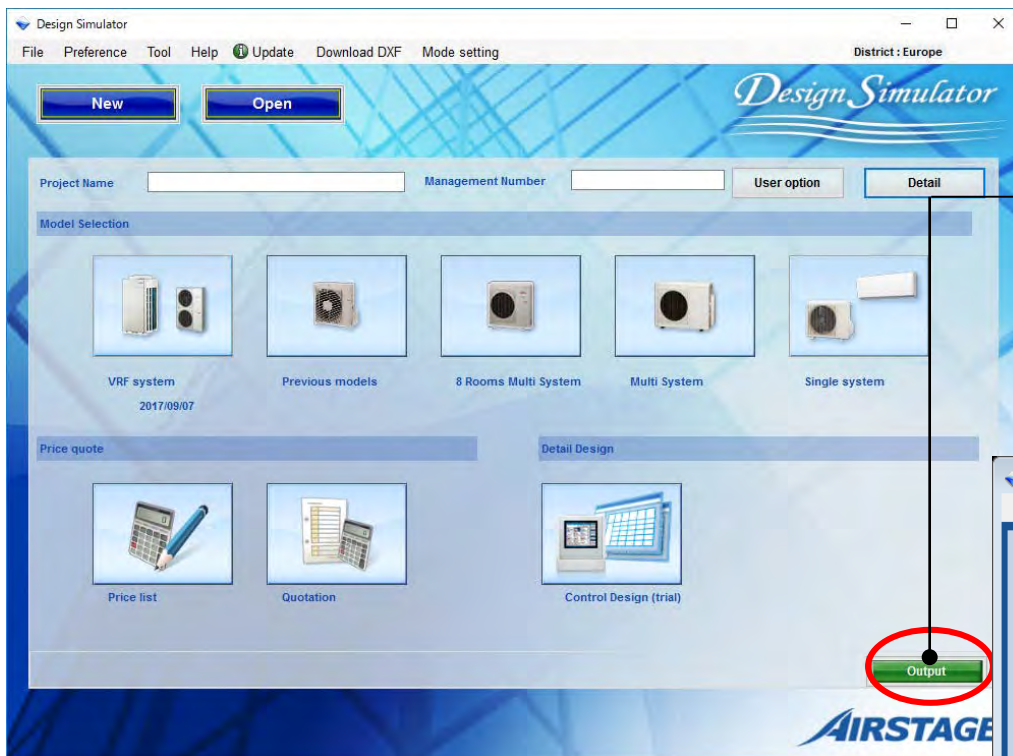


Naciśnij „Zapis”

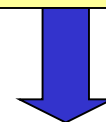


Pojawi się okno Eksportu

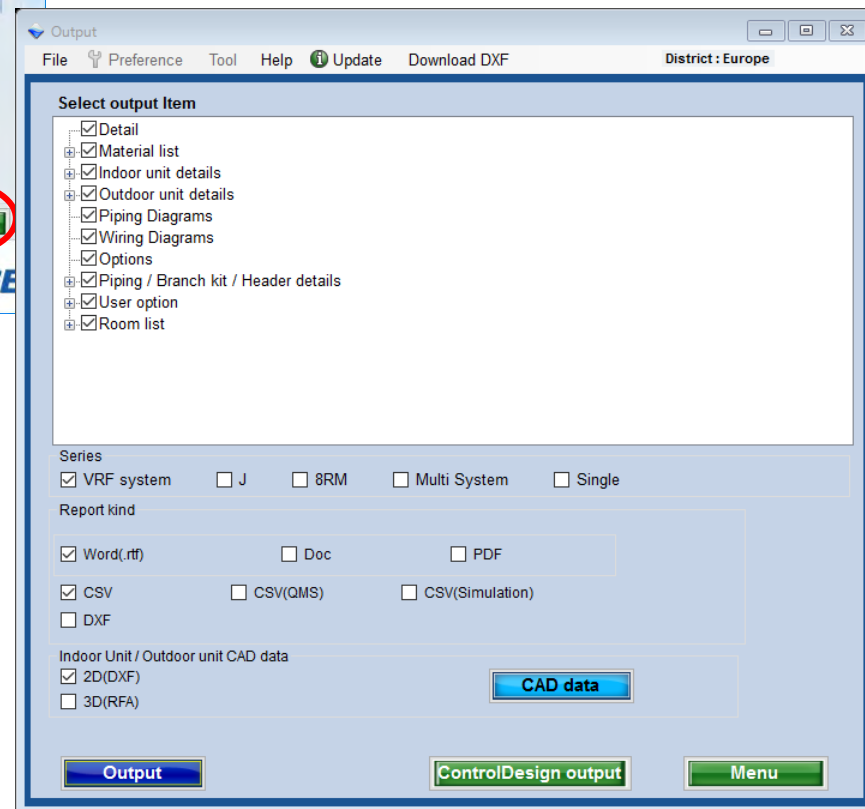




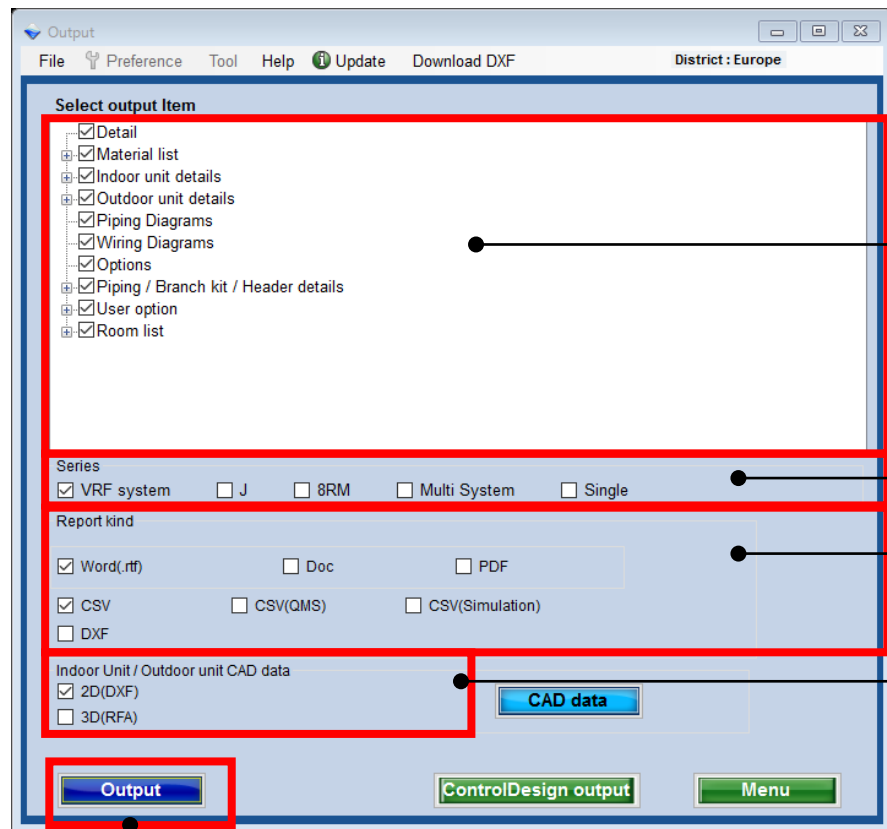
Naciśnij „Zapisz”



Pojawi się okno Eksportu



Eksport (1/2)



Zaznaczony element zostanie wyeksportowany.

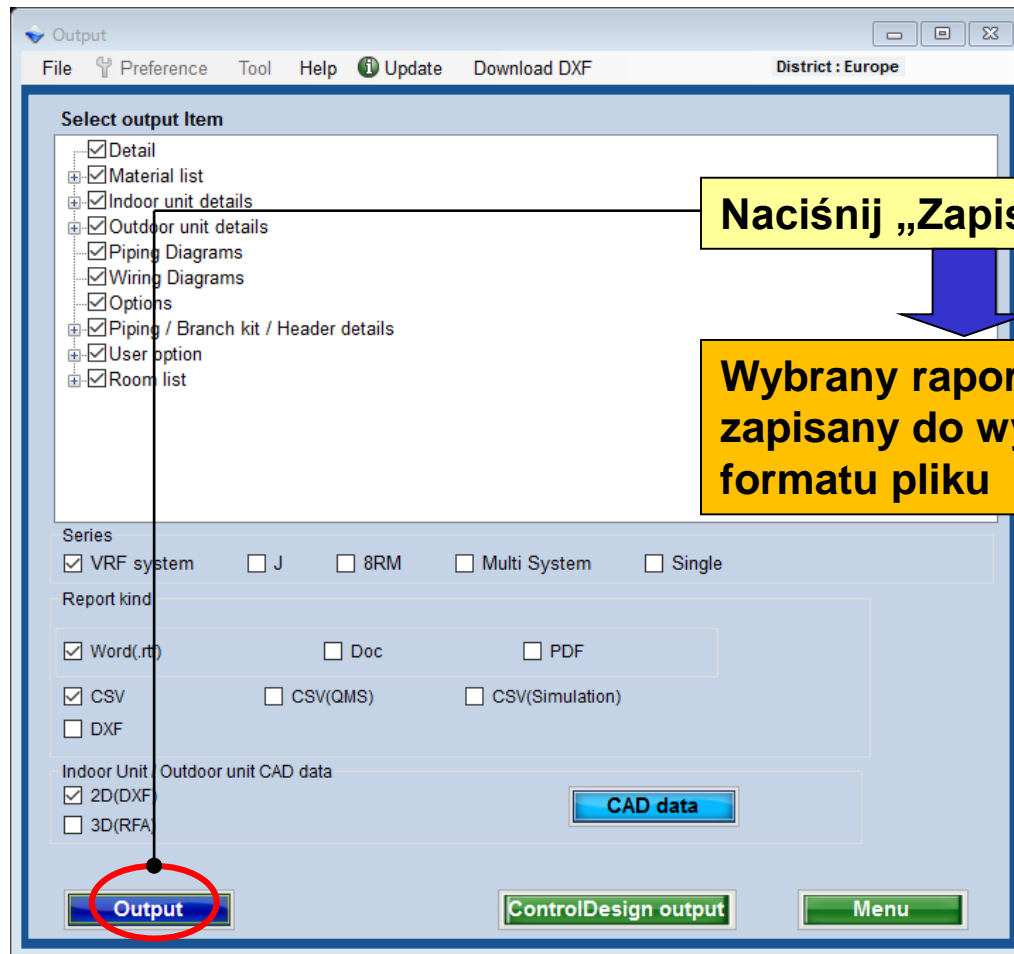
Wybierz serię systemu

Wybierz typ raportu
***Patrz punkty 1 do 6**

Wybierz rysunki CAD jednostki wewnętrznej / zewnętrznej
***Patrz punkt 7 do 8**

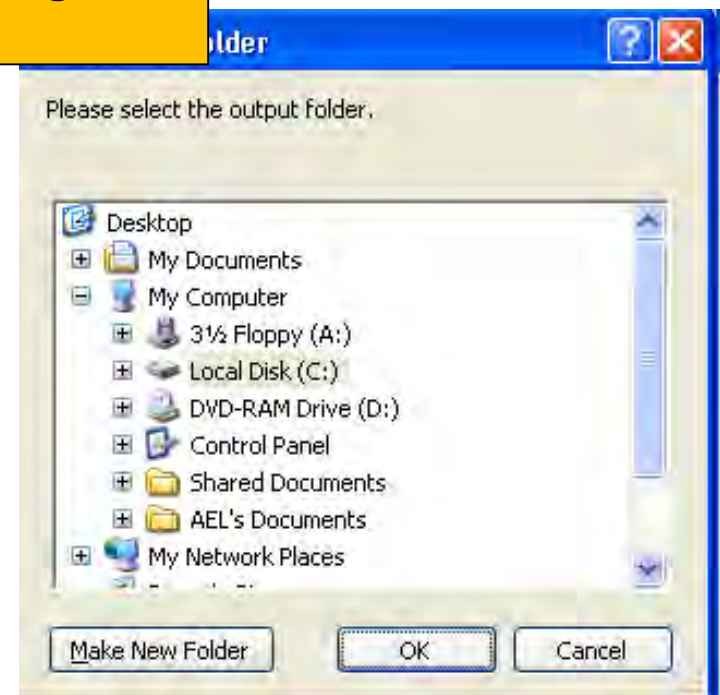
Naciśnij „Zapisz”

Eksport (2/2)



Naciśnij „Zapisz”

Wybrany raport zostanie zapisany do wybranego formatu pliku



Index (classification)	Start classification	Year after	Q
01	011	010	
01	011	010	

$\{F1\} \text{ has options } \{F1\} \text{ given } \{F1\}$
 Rule 1 (ORF system) - A1F1BGA1H

Index (classification)	Start classification	Year after	Q
01	011	011	
01	011	011	

9. Wykaz pomieszczeń

1. Wykaz urządzeń

AIRSTAGE

Project Name: Management/Residential
Building:

Created by:
Company:
Customer:

1.1 Equipment list

2.1 VRF system

Model	Quantity	Notes
AJY12GALH	1	Outdoor Unit
AJY12GALH	7	Indoor Unit
AJY12GALH	1	Indoor Unit
AJY12GALH	1	Indoor Unit
AJY12GALH	1	Indoor Unit
AJY12GALH	1	Indoor Unit
AJY12GALH	1	Indoor Unit

2.2 VRF system

Model	Quantity	Notes
AJY12GALH	1	Outdoor Unit
AJY12GALH	1	Indoor Unit
AJY12GALH	1	Indoor Unit
AJY12GALH	1	Indoor Unit
AJY12GALH	1	Indoor Unit
AJY12GALH	1	Indoor Unit
AJY12GALH	1	Indoor Unit

2.3 VRF system

Model	Quantity	Notes
AJY12GALH	1	Outdoor Unit
AJY12GALH	1	Indoor Unit
AJY12GALH	1	Indoor Unit
AJY12GALH	1	Indoor Unit
AJY12GALH	1	Indoor Unit
AJY12GALH	1	Indoor Unit
AJY12GALH	1	Indoor Unit

2. Szczegółowe dane jedn. wewn.

2.1 VRF system

Model	Capacity	Power	Flow	Pressure	Temperature	Humidity	Speed	Control
AJY12GALH	12.0	1.2	1.2	1.2	1.2	1.2	1.2	1.2
AJY12GALH	12.0	1.2	1.2	1.2	1.2	1.2	1.2	1.2
AJY12GALH	12.0	1.2	1.2	1.2	1.2	1.2	1.2	1.2
AJY12GALH	12.0	1.2	1.2	1.2	1.2	1.2	1.2	1.2
AJY12GALH	12.0	1.2	1.2	1.2	1.2	1.2	1.2	1.2
AJY12GALH	12.0	1.2	1.2	1.2	1.2	1.2	1.2	1.2
AJY12GALH	12.0	1.2	1.2	1.2	1.2	1.2	1.2	1.2

2.2 VRF system

Model	Capacity	Power	Flow	Pressure	Temperature	Humidity	Speed	Control
AJY12GALH	12.0	1.2	1.2	1.2	1.2	1.2	1.2	1.2
AJY12GALH	12.0	1.2	1.2	1.2	1.2	1.2	1.2	1.2
AJY12GALH	12.0	1.2	1.2	1.2	1.2	1.2	1.2	1.2
AJY12GALH	12.0	1.2	1.2	1.2	1.2	1.2	1.2	1.2
AJY12GALH	12.0	1.2	1.2	1.2	1.2	1.2	1.2	1.2
AJY12GALH	12.0	1.2	1.2	1.2	1.2	1.2	1.2	1.2
AJY12GALH	12.0	1.2	1.2	1.2	1.2	1.2	1.2	1.2

2.3 VRF system

Model	Capacity	Power	Flow	Pressure	Temperature	Humidity	Speed	Control
AJY12GALH	12.0	1.2	1.2	1.2	1.2	1.2	1.2	1.2
AJY12GALH	12.0	1.2	1.2	1.2	1.2	1.2	1.2	1.2
AJY12GALH	12.0	1.2	1.2	1.2	1.2	1.2	1.2	1.2
AJY12GALH	12.0	1.2	1.2	1.2	1.2	1.2	1.2	1.2
AJY12GALH	12.0	1.2	1.2	1.2	1.2	1.2	1.2	1.2
AJY12GALH	12.0	1.2	1.2	1.2	1.2	1.2	1.2	1.2
AJY12GALH	12.0	1.2	1.2	1.2	1.2	1.2	1.2	1.2

3. Szczegółowe dane jedn. zewn.

3.1 VRF system

Model	Capacity	Power	Flow	Pressure	Temperature	Humidity	Speed	Control
AJY12GALH	12.0	1.2	1.2	1.2	1.2	1.2	1.2	1.2
AJY12GALH	12.0	1.2	1.2	1.2	1.2	1.2	1.2	1.2
AJY12GALH	12.0	1.2	1.2	1.2	1.2	1.2	1.2	1.2
AJY12GALH	12.0	1.2	1.2	1.2	1.2	1.2	1.2	1.2
AJY12GALH	12.0	1.2	1.2	1.2	1.2	1.2	1.2	1.2
AJY12GALH	12.0	1.2	1.2	1.2	1.2	1.2	1.2	1.2
AJY12GALH	12.0	1.2	1.2	1.2	1.2	1.2	1.2	1.2

3.2 VRF system

Model	Capacity	Power	Flow	Pressure	Temperature	Humidity	Speed	Control
AJY12GALH	12.0	1.2	1.2	1.2	1.2	1.2	1.2	1.2
AJY12GALH	12.0	1.2	1.2	1.2	1.2	1.2	1.2	1.2
AJY12GALH	12.0	1.2	1.2	1.2	1.2	1.2	1.2	1.2
AJY12GALH	12.0	1.2	1.2	1.2	1.2	1.2	1.2	1.2
AJY12GALH	12.0	1.2	1.2	1.2	1.2	1.2	1.2	1.2
AJY12GALH	12.0	1.2	1.2	1.2	1.2	1.2	1.2	1.2
AJY12GALH	12.0	1.2	1.2	1.2	1.2	1.2	1.2	1.2

3.3 VRF system

Model	Capacity	Power	Flow	Pressure	Temperature	Humidity	Speed	Control
AJY12GALH	12.0	1.2	1.2	1.2	1.2	1.2	1.2	1.2
AJY12GALH	12.0	1.2	1.2	1.2	1.2	1.2	1.2	1.2
AJY12GALH	12.0	1.2	1.2	1.2	1.2	1.2	1.2	1.2
AJY12GALH	12.0	1.2	1.2	1.2	1.2	1.2	1.2	1.2
AJY12GALH	12.0	1.2	1.2	1.2	1.2	1.2	1.2	1.2
AJY12GALH	12.0	1.2	1.2	1.2	1.2	1.2	1.2	1.2
AJY12GALH	12.0	1.2	1.2	1.2	1.2	1.2	1.2	1.2

4. Schematy instalacji chłodniczej



4. Schematy instalacji elektrycznej (linia transmisji)



5. Schematy instalacji elektrycznej (linia zasilania)



6. Opcje

AIRSTAGE

Options

Unit 1 (VRF system) - AJY12GALH

Name	Model	Type	Qty	Model	Type	Qty
Unit1	AJY12GALH	Wired RCU Touch	1	AJY12GALH	Wired RCU Touch	1
Unit2	AJY12GALH	Wired RCU Touch	1	AJY12GALH	Wired RCU Touch	1
Unit3	AJY12GALH	Wired RCU Touch	1	AJY12GALH	Wired RCU Touch	1
Unit4	AJY12GALH	Wired RCU Touch	1	AJY12GALH	Wired RCU Touch	1
Unit5	AJY12GALH	Wired RCU Touch	1	AJY12GALH	Wired RCU Touch	1
Unit6	AJY12GALH	Wired RCU Touch	1	AJY12GALH	Wired RCU Touch	1
Unit7	AJY12GALH	Wired RCU Touch	1	AJY12GALH	Wired RCU Touch	1

7. Szczegółowe dane rur / trójnika / rozgałęźnika

Series VRF system

Name	Model	9.02	12.70	15.88	18.05	22.22	28.56
Unit1	AJY12GALH	0.0	0.0	0.0	0.0	0.0	0.0

Name	Referring (R10A)(Hz)	Add Referring (R10A)(Hz)	Total Referring (R10A)(Hz)
Unit1	28.0	15.0	43.0

7.4 Branch box details

7.5 RB details

Series VRF system

Name	Model	UTP-R021AH	UTP-R021BH	UTP-R021CH	UTP-R021DH
Unit1	AJY12GALH	7	0	0	0

8. Opcje użytkownika

8.1 User system (Options)

Name	Model	Type	Qty	Model	Type	Qty
Unit1	AJY12GALH	Wired RCU Touch	1	AJY12GALH	Wired RCU Touch	1
Unit2	AJY12GALH	Wired RCU Touch	1	AJY12GALH	Wired RCU Touch	1
Unit3	AJY12GALH	Wired RCU Touch	1	AJY12GALH	Wired RCU Touch	1

8.2 User system (Options)

Name	Model	Type	Qty	Model	Type	Qty
Unit1	AJY12GALH	Wired RCU Touch	1	AJY12GALH	Wired RCU Touch	1
Unit2	AJY12GALH	Wired RCU Touch	1	AJY12GALH	Wired RCU Touch	1
Unit3	AJY12GALH	Wired RCU Touch	1	AJY12GALH	Wired RCU Touch	1

9. Wykaz pomieszczeń

8.1 User system (Options)

8.2 User system (Options)

There are some differences between a calculated result and a specification.

1. Wykaz urządzeń

AIRSTAGE

Project Name: Management/Residential
Building:

Created by:
Company:
Customer:

1.1 Equipment list

2.1 VRF system

Model	Quantity	Notes
AJY12GALH	1	Outdoor Unit
AJY12GALH	7	Indoor Unit
UTP-R021AH	1	Indoor Unit
UTP-R021AH	2	Indoor Unit
UTP-R021AH	2	Indoor Unit
UTP-R021AH	2	Indoor Unit

2.2 VRF system

Model	Capacity	Notes
AJY12GALH	12.0	Outdoor Unit
AJY12GALH	12.0	Indoor Unit
AJY12GALH	12.0	Indoor Unit
AJY12GALH	12.0	Indoor Unit
AJY12GALH	12.0	Indoor Unit
AJY12GALH	12.0	Indoor Unit
AJY12GALH	12.0	Indoor Unit

2.3 VRF system

Model	Capacity	Notes
AJY12GALH	12.0	Outdoor Unit
AJY12GALH	12.0	Indoor Unit
AJY12GALH	12.0	Indoor Unit
AJY12GALH	12.0	Indoor Unit
AJY12GALH	12.0	Indoor Unit
AJY12GALH	12.0	Indoor Unit
AJY12GALH	12.0	Indoor Unit

2. Szczegółowe dane jedn. wewn.

2.1 VRF system

Model	Capacity	Notes
AJY12GALH	12.0	Outdoor Unit
AJY12GALH	12.0	Indoor Unit
AJY12GALH	12.0	Indoor Unit
AJY12GALH	12.0	Indoor Unit
AJY12GALH	12.0	Indoor Unit
AJY12GALH	12.0	Indoor Unit
AJY12GALH	12.0	Indoor Unit

2.2 VRF system

Model	Capacity	Notes
AJY12GALH	12.0	Outdoor Unit
AJY12GALH	12.0	Indoor Unit
AJY12GALH	12.0	Indoor Unit
AJY12GALH	12.0	Indoor Unit
AJY12GALH	12.0	Indoor Unit
AJY12GALH	12.0	Indoor Unit
AJY12GALH	12.0	Indoor Unit

3. Szczegółowe dane jedn. zewn.

2.1 VRF system

Model	Capacity	Notes
AJY12GALH	12.0	Outdoor Unit
AJY12GALH	12.0	Indoor Unit
AJY12GALH	12.0	Indoor Unit
AJY12GALH	12.0	Indoor Unit
AJY12GALH	12.0	Indoor Unit
AJY12GALH	12.0	Indoor Unit
AJY12GALH	12.0	Indoor Unit

2.2 VRF system

Model	Capacity	Notes
AJY12GALH	12.0	Outdoor Unit
AJY12GALH	12.0	Indoor Unit
AJY12GALH	12.0	Indoor Unit
AJY12GALH	12.0	Indoor Unit
AJY12GALH	12.0	Indoor Unit
AJY12GALH	12.0	Indoor Unit
AJY12GALH	12.0	Indoor Unit

4. Schematy instalacji chłodniczej



4. Schematy instalacji elektrycznej (linia transmisji)

5. Schematy instalacji elektrycznej (linia zasilania)

6. Opcje

AIRSTAGE

Options

Unit 1 (VRF system) - AJY12GALH

Name	Model	Type	Qty	Model	Type	Qty
Unit1	AJY12GALH	Wired RCU Touch	1	UTP-R021AH	Cassette Grille	1
Unit2	AJY12GALH	Wired RCU Touch	1	UTP-R021AH	Cassette Grille	1
Unit3	AJY12GALH	Wired RCU Touch	1	UTP-R021AH	Cassette Grille	1
Unit4	AJY12GALH	Wired RCU Touch	1	UTP-R021AH	Cassette Grille	1
Unit5	AJY12GALH	Wired RCU Touch	1	UTP-R021AH	Cassette Grille	1
Unit6	AJY12GALH	Wired RCU Touch	1	UTP-R021AH	Cassette Grille	1
Unit7	AJY12GALH	Wired RCU Touch	1	UTP-R021AH	Cassette Grille	1

7. Szczegółowe dane rur / trójnika / rozgałęźnika

Series VRF system

Name	Model	9.02	12.70	15.80	18.05	22.22	28.50
Unit1	AJY12GALH	0.0	0.0	0.0	0.0	0.0	0.0

Unit1

Name	Referring (R10A)(m)	Add Referring (R10A)(m)	Total Referring (R10A)(m)
Unit1	28.0	15.0	43.0

7.4 Branch box details

7.5 RB details

Series VRF system

Name	Model	UTP-R021AH	UTP-R021BH	UTP-R021CH	UTP-R021DH
Unit1	AJY12GALH	7	0	0	0

8. Opcje użytkownika

8.1 User system (Options)

Name	Model	Type	Qty	Model	Type	Qty
Unit1	AJY12GALH	Wired RCU Touch	1	UTP-R021AH	Cassette Grille	1
Unit2	AJY12GALH	Wired RCU Touch	1	UTP-R021AH	Cassette Grille	1
Unit3	AJY12GALH	Wired RCU Touch	1	UTP-R021AH	Cassette Grille	1

8.2 User system (Options)

Name	Model	Type	Qty	Model	Type	Qty
Unit1	AJY12GALH	Wired RCU Touch	1	UTP-R021AH	Cassette Grille	1
Unit2	AJY12GALH	Wired RCU Touch	1	UTP-R021AH	Cassette Grille	1
Unit3	AJY12GALH	Wired RCU Touch	1	UTP-R021AH	Cassette Grille	1

9. Wykaz pomieszczeń

8.1 User system (Options)

8.2 User system (Options)

There are some differences between a calculated and a specified specification.

Design Simulator

[illegible]

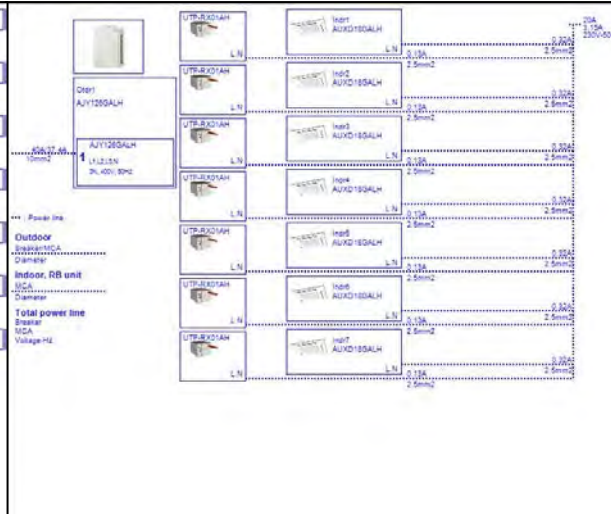
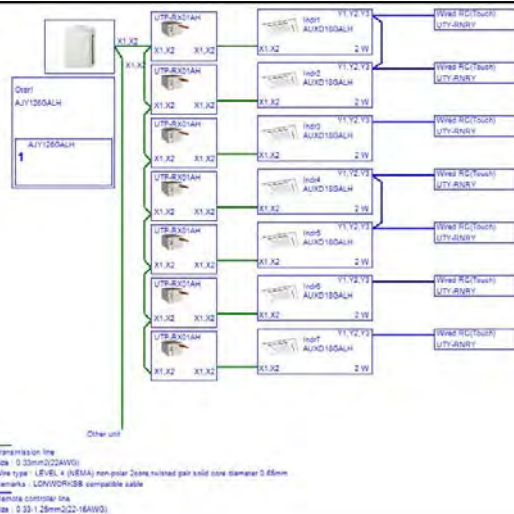
Design Simulator

[illegible]

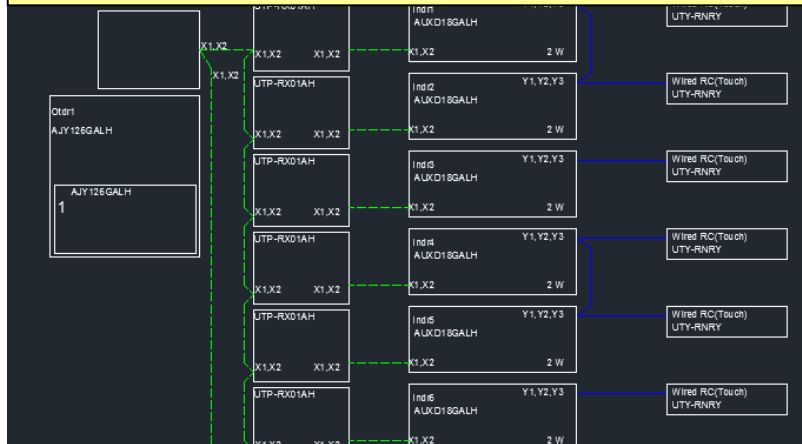
Schematy instalacji chłodniczej

Schematy instalacji elektrycznej (linia transmisji)

Schematy instalacji elektrycznej (linia zasilania)



Schematy instalacji elektrycznej (linia transmisji)



Transmission line
 Size : 0.33mm² (22AWG)
 Wire type : LEVEL 4 (NB)
 Remarks : LONWORKSR

Remote controller line
 Size : 0.33-1.25mm² (22-18AWG)

Legend
 --- Power line
 Outdoor speaker/MCA diameter
 Indoor, RB unit MCA diameter
 Total powerline
 Speaker MCA
 Voltage-Hz

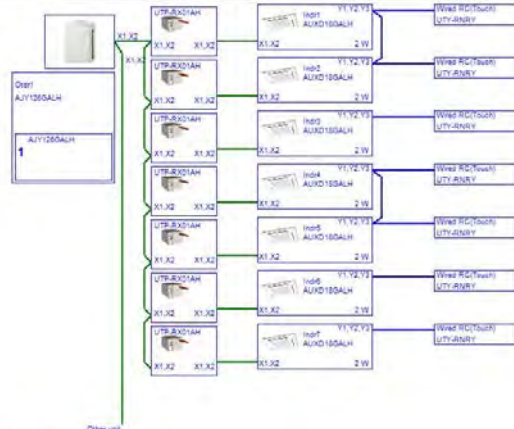
Cable Specifications Table

Cable Type	Size	Wire Type	Remarks
Transmission line	0.33mm ² (22AWG)	LEVEL 4 (NB)	LONWORKSR
Remote controller line	0.33-1.25mm ² (22-18AWG)		

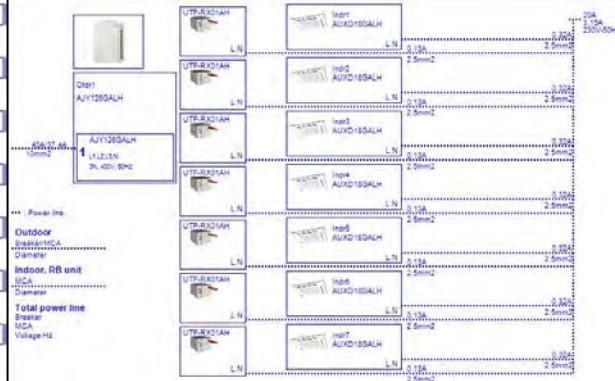
Schematy instalacji chłodniczej

Schematy instalacji elektrycznej (linia transmisji)

Schematy instalacji elektrycznej (linia zasilania)



Transmission line
Size : 0.33mm(0.22AWG)
Wire type : LEVEL 4 (NEMA) non-polar 2-core twisted pair solid core diameter 0.65mm
Remarks : LVN100P105B compatible cable
Refrigerant conductor line
Size : 0.33-1.25mm(0.22-16AWG)

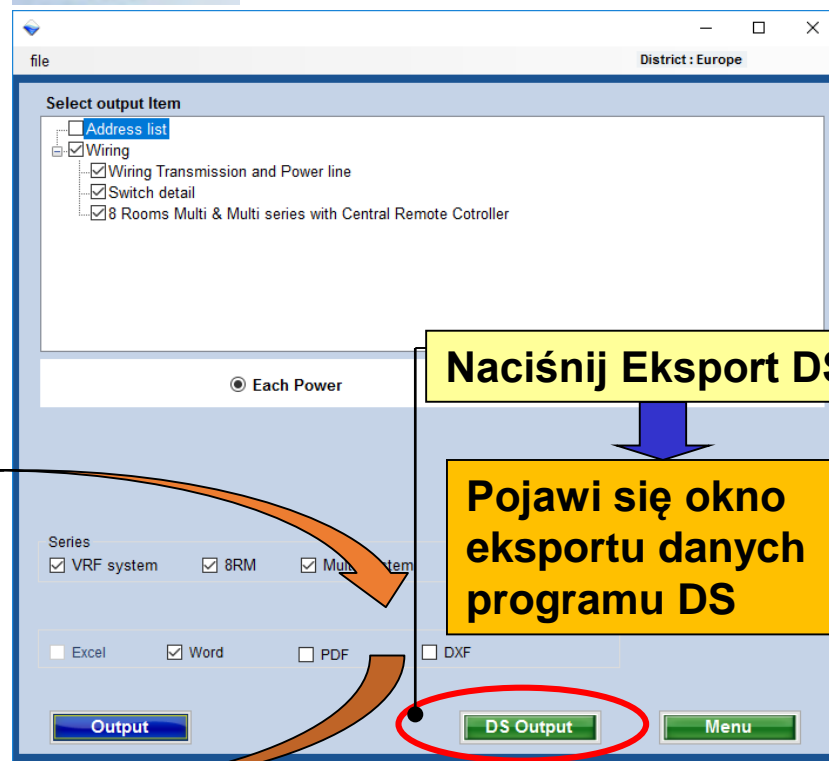
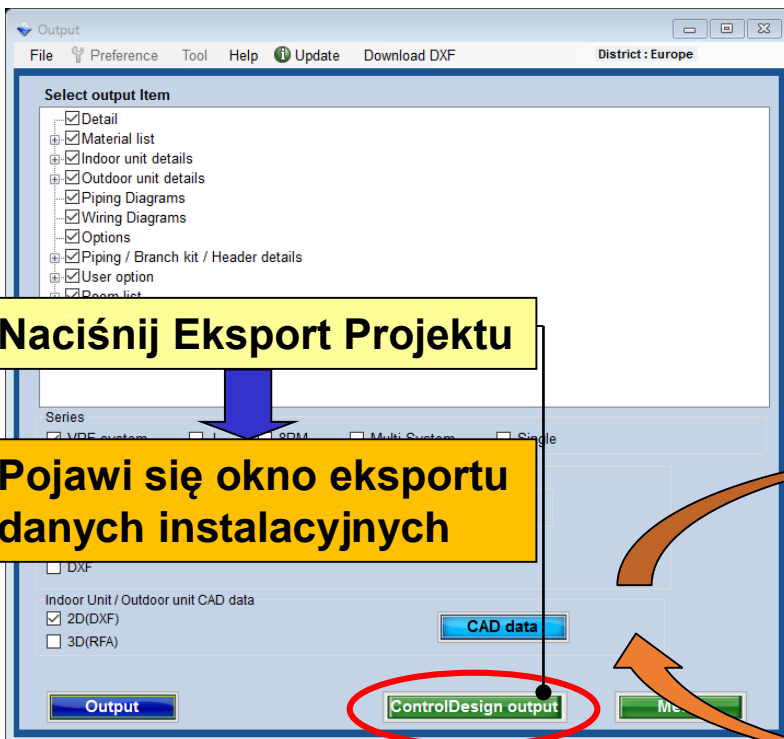
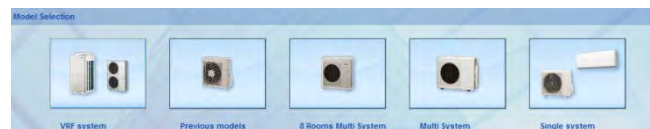


Outdoor
Indoor, RB unit
Total power line
Power
Size
Voltage Hz

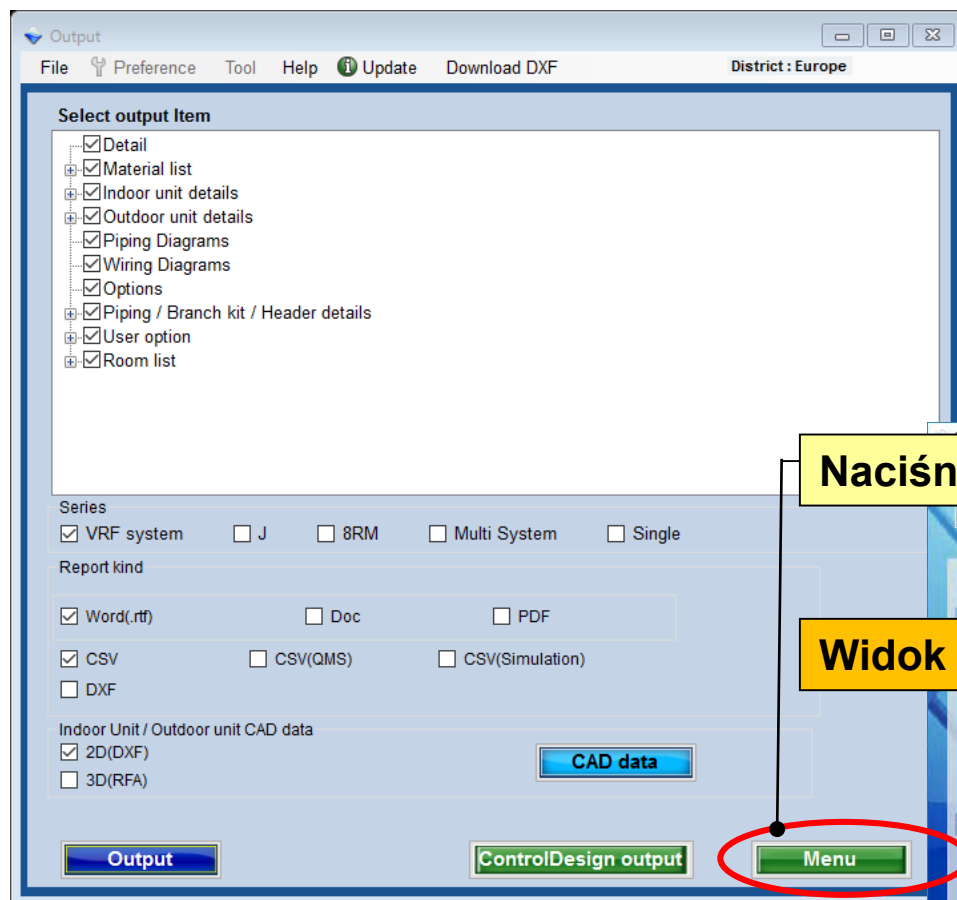


Pipe explanatory notes
aa x bb x cc
aa : Liquid
bb : Discharge gas
cc : Suction gas
aa x bb
aa : Liquid
bb : Gas

Eksport danych instalacyjnych

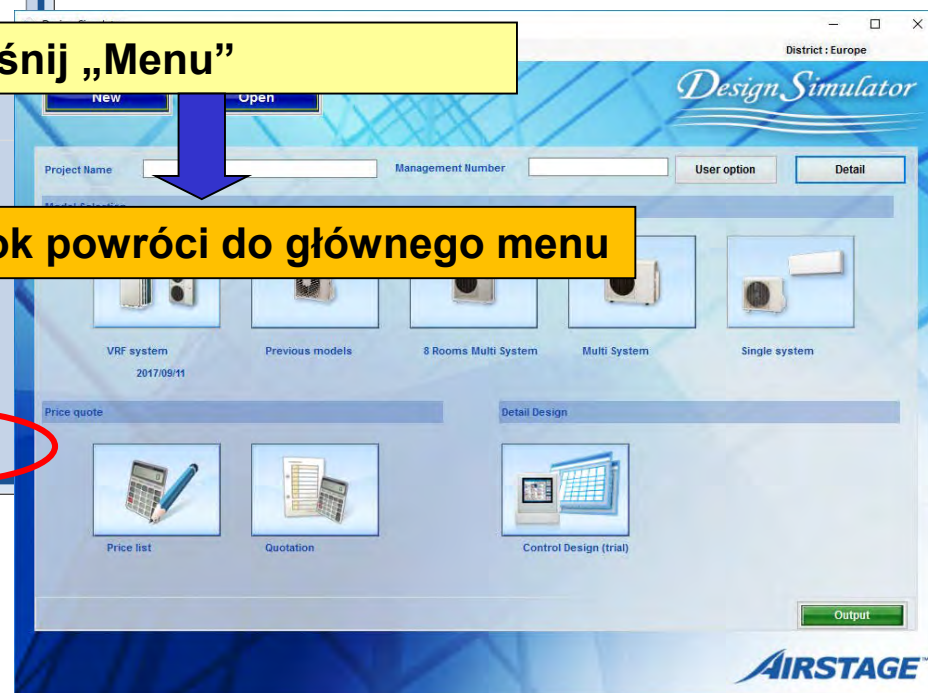


Menu



Naciśnij „Menu”

Widok powróci do głównego menu



Dane CAD (1/2)

Naciśnij dane CAD

Pojawi się okno eksportu rysunków CAD

Wybierz rodzaj CAD / Serię

Zaznacz datę utworzenia

Naciśnij „Zaznacz”

Zaznaczone i wyeksportowane zostaną wszystkie elementy na liście

Wybrane elementy na liście

Wyeksportowane zostaną tylko elementy zaznaczone na liście

CAD data

Check all

CAD Kind

2D(DXF)

Series

All

Creation date

2017/03/07

2017/09/07

Output

Series

Unit

Type

Model

File

Creation date

☐

ML

Indoor

☐

ML

Indoor

☐

ML

Indoor

☐

ML

Indoor

☐

ML

Indoor

☐

ML

Indoor

☐

ML

Indoor

☐

ML

Indoor

☐

ML

Indoor

☐

ML

Indoor

☐

ML

Indoor

☐

ML

Indoor

☐

ML

Indoor

☐

ML

Indoor

☐

ML

Indoor

☐

ML

Indoor

☐

ML

Indoor

☐

ML

Indoor

☐

ML

Indoor

☐

ML

Indoor

☐

ML

Indoor

☐

ML

Indoor

☐

ML

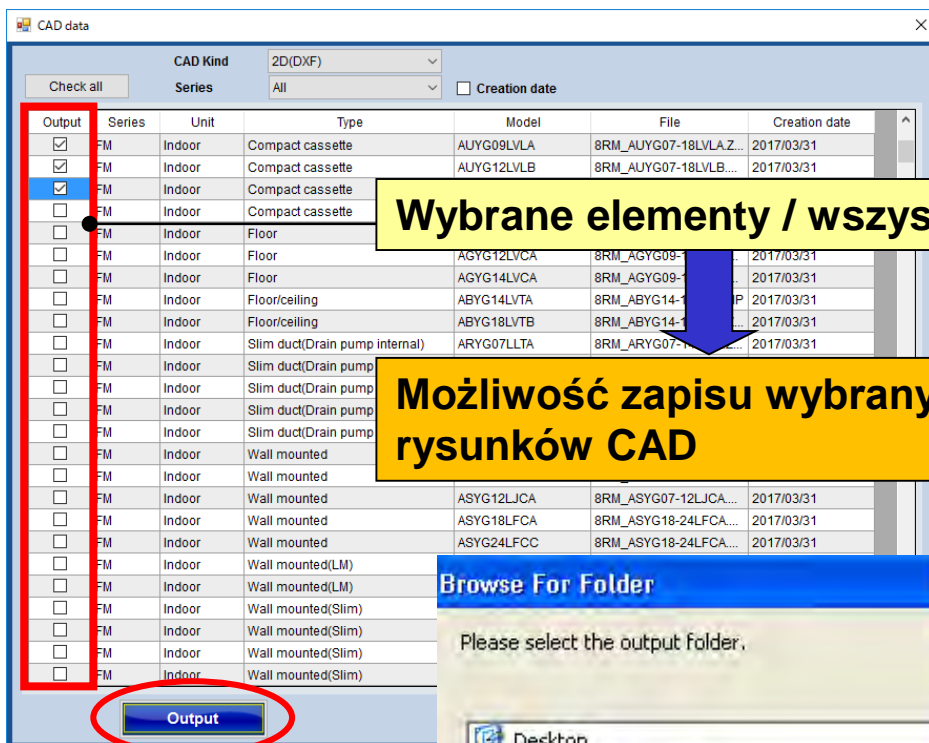
Indoor

<input type="checkbox"/>	ML	Indoor	Ceiling(3 Phase Twin)	ABYG24LVTA	SM_ABYG24LVTA.ZIP	2017/08/31
<input type="checkbox"/>	ML	Indoor	Compact Cassette(1Phase Twin)	AUYG18LVLB	SM_AUYG18LVLB.ZIP	2017/03/31
<input type="checkbox"/>	ML	Indoor	Compact Cassette(1Phase Twin)	AUYG22LVLA	SM_AUYG22LVLA.ZIP	2017/03/31
<input type="checkbox"/>	ML	Indoor	Compact Cassette(1Phase Twin)	AUYG24LVLA	SM_AUYG24LVLA.ZIP	2017/08/31
<input type="checkbox"/>	ML	Indoor	Compact Cassette(3 Phase Dou...	AUYG18LVLB	SM_AUYG18LVLB.ZIP	2017/03/31
<input type="checkbox"/>	ML	Indoor	Compact Cassette(3 Phase Dou...	AUYG22LVLA	SM_AUYG22LVLA.ZIP	2017/03/31
<input type="checkbox"/>	ML	Indoor	Compact Cassette(3 Phase Twin)	AUYG18LVLB	SM_AUYG18LVLB.ZIP	2017/03/31
<input type="checkbox"/>	ML	Indoor	Compact Cassette(3 Phase Twin)	AUYG22LVLA	SM_AUYG22LVLA.ZIP	2017/03/31
<input type="checkbox"/>	ML	Indoor	Compact Cassette(3 Phase Twin)	AUYG24LVLA	SM_AUYG24LVLA.ZIP	2017/08/31

Output

Cancel

Dane CAD (2/2)

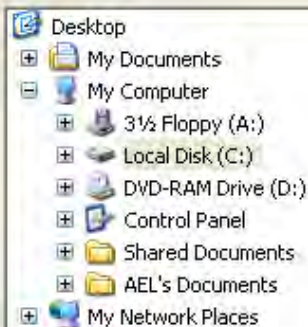


Wybrane elementy / wszystkie

Możliwość zapisu wybranych rysunków CAD

Browse For Folder

Please select the output folder.

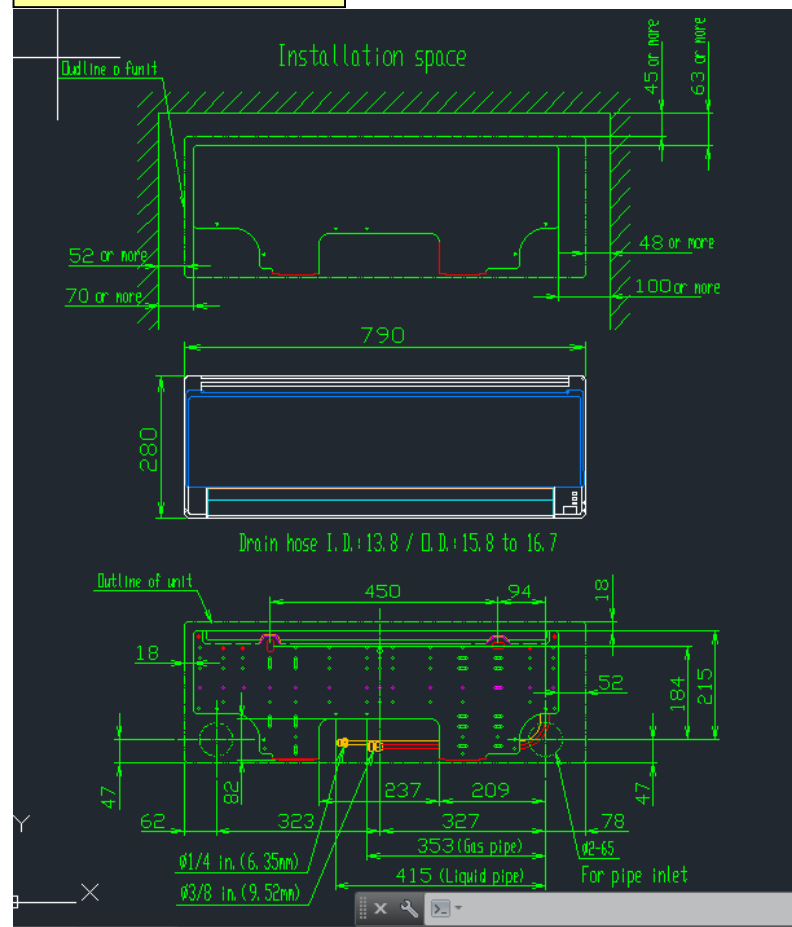


Make New Folder

OK

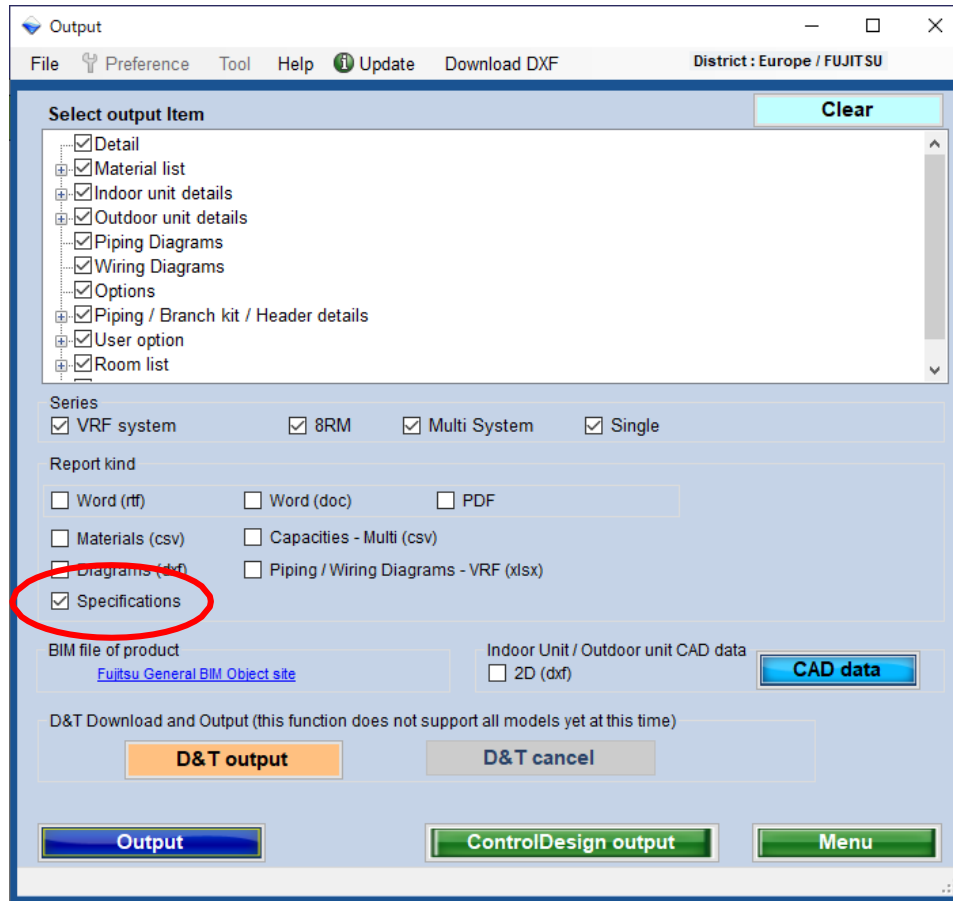
Cancel

Rysunek CAD

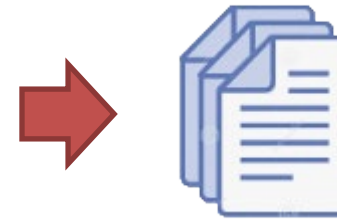


Specifications

Output a specifications document file automatically combined ones of selected models.



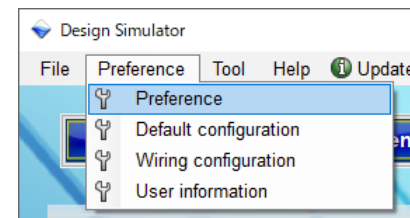
Output



One file for a project

[setting]

Source folder containing document files for models is specified in Preference at Menu.



Specs



[note]

Specification document file for each model have to be prepared.