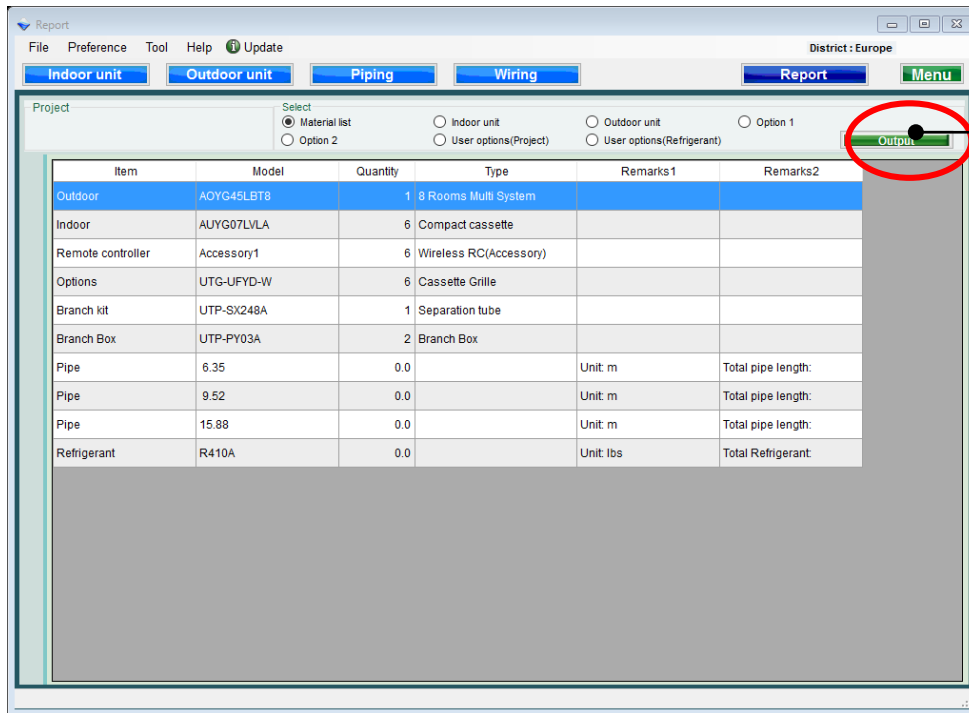


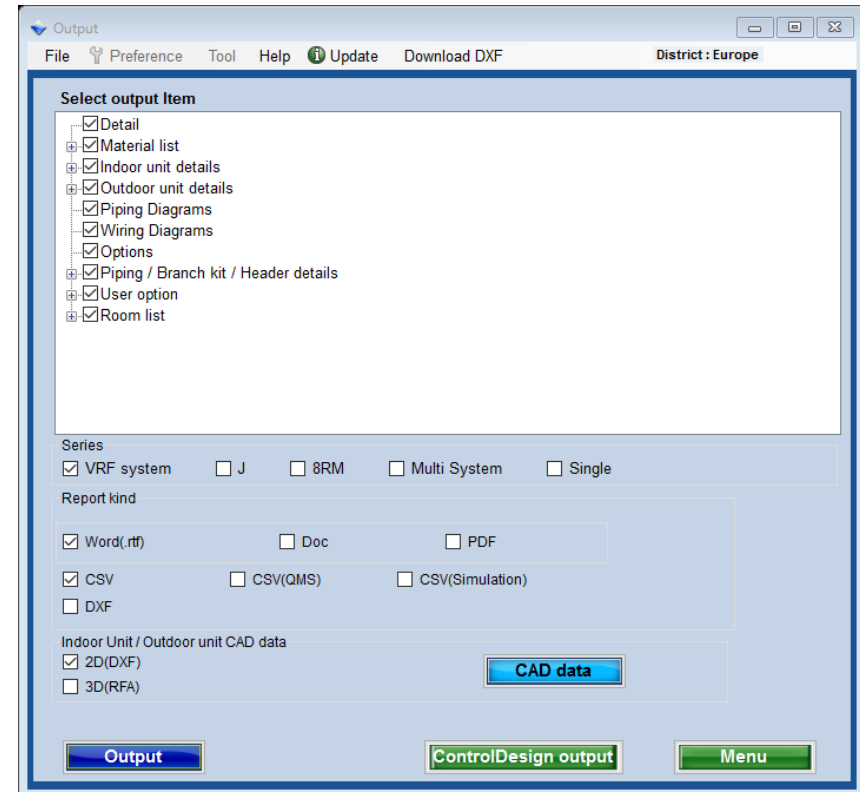
Output

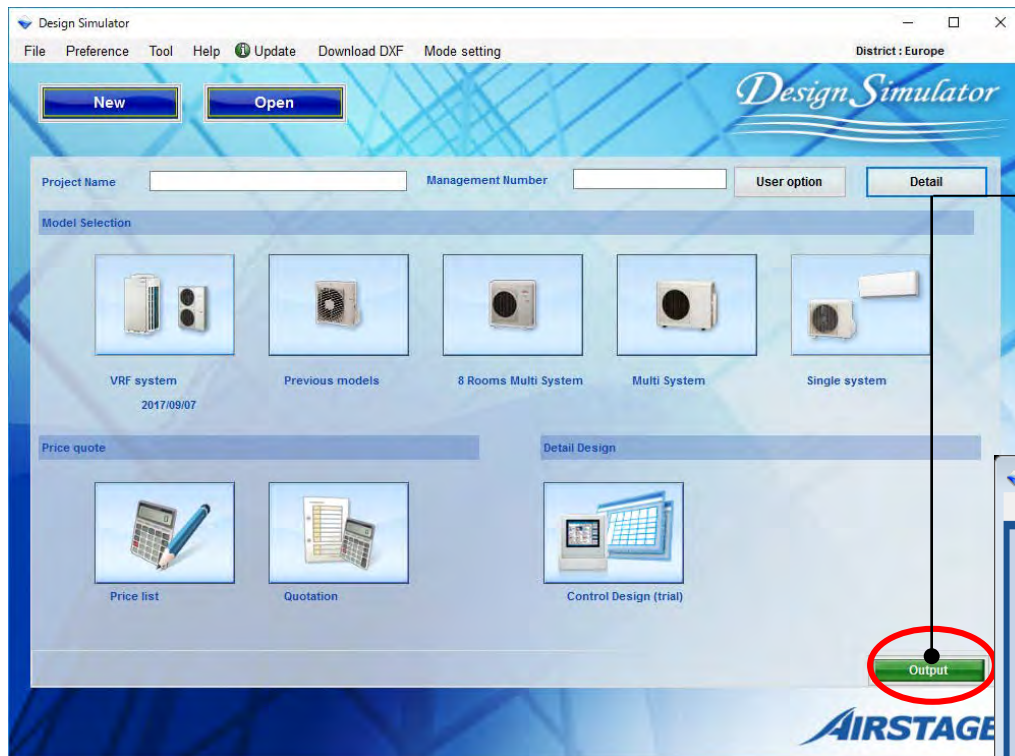


Select "Output"

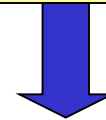


Change to Output screen

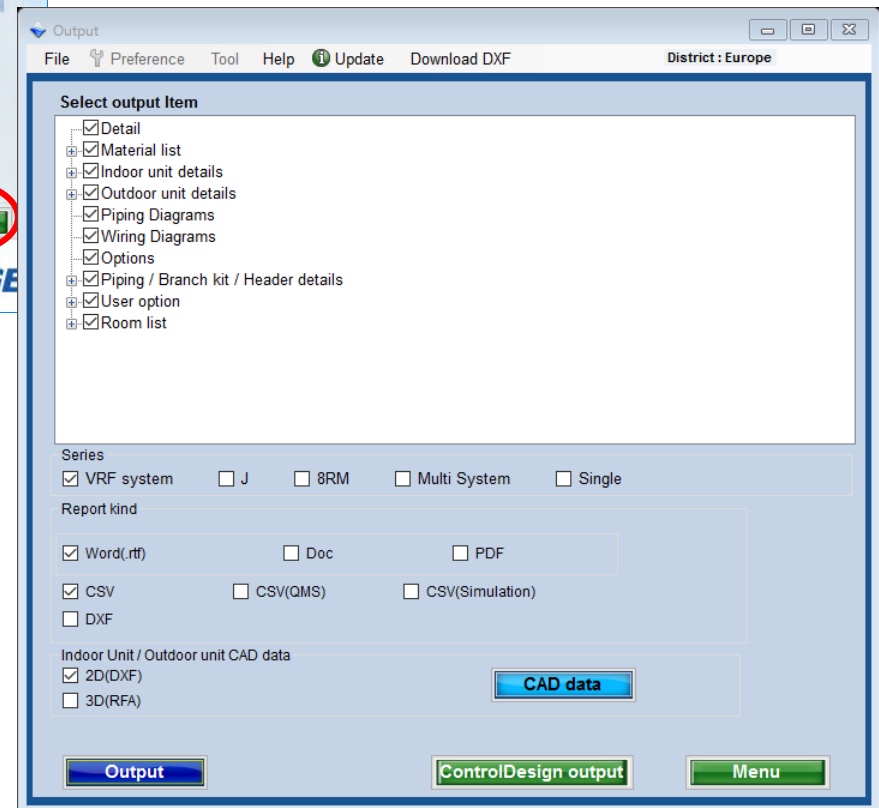




Select "Output"



Change to Output screen



Output (1/2)

Output

File Preference Tool Help Update Download DXF District : Europe

Select output Item

- ☒ Detail
- ☒ Material list
- ☒ Indoor unit details
- ☒ Outdoor unit details
- ☒ Piping Diagrams
- ☒ Wiring Diagrams
- ☒ Options
- ☒ Piping / Branch kit / Header details
- ☒ User option
- ☒ Room list

Series

☒ VRF system ☐ J ☐ 8RM ☐ Multi System ☐ Single

Report kind

☒ Word(.rtf) ☐ Doc ☐ PDF

☒ CSV ☐ CSV(QMS) ☐ CSV(Simulation)

☐ DXF

Indoor Unit / Outdoor unit CAD data

☒ 2D(DXF) ☐ 3D(RFA)

CAD data

Output ControlDesign output Menu

The item to which the check adheres is output.

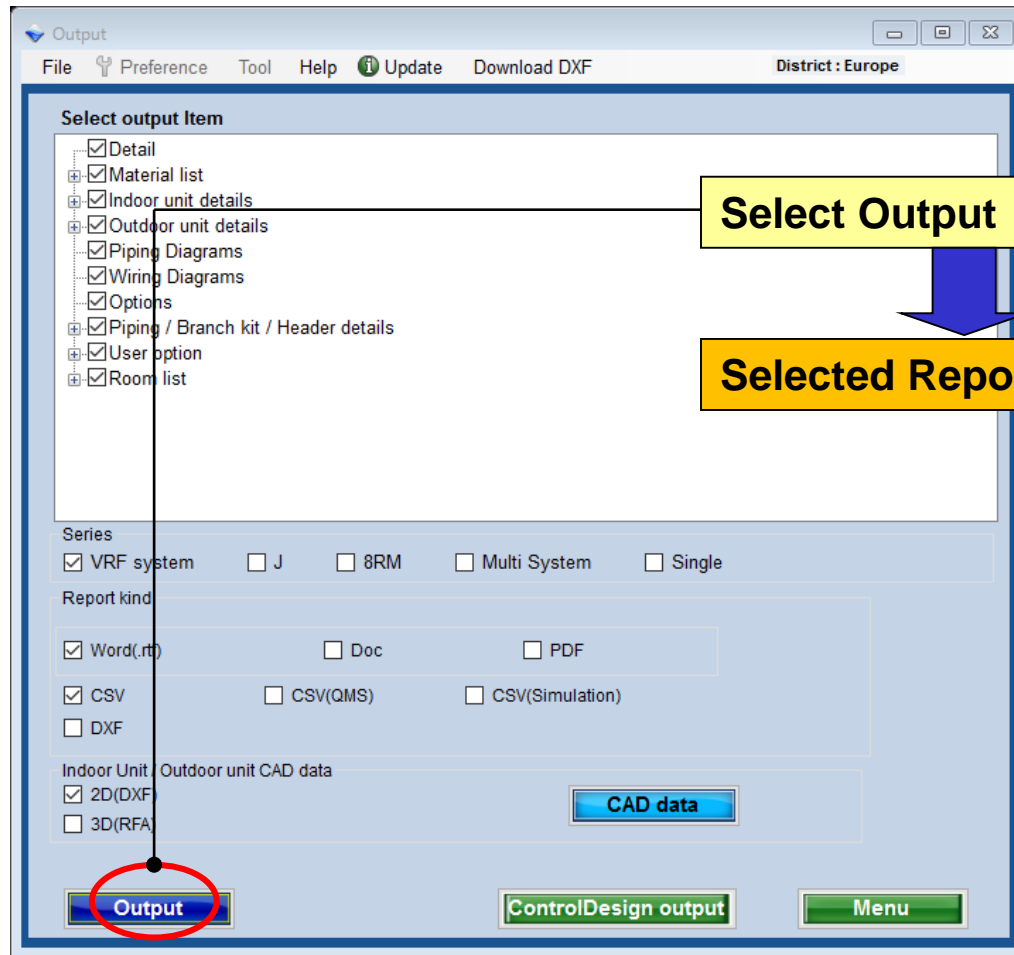
Select Series

Select Report kind
*Refer to 1 to 6

Select Indoor Unit/Outdoor
unit CAD data *Refer to 7 to 8

Select Output

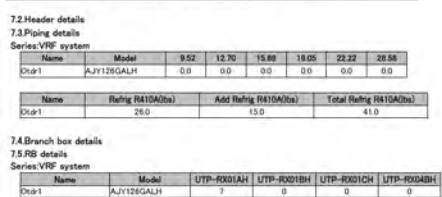
Output (2/2)



4.Piping Diagrams



7.Piping / Branch kit / Header details



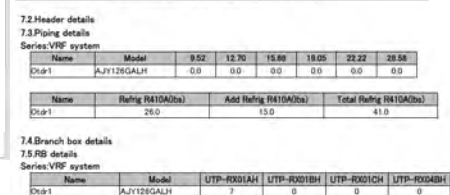
9.Room list



4.Piping Diagrams



7.Piping / Branch kit / Header details



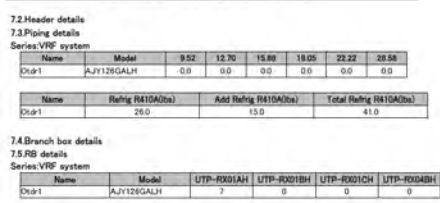
9.Room list



4.Piping Diagrams



7.Piping / Branch kit / Header details



9.Room list



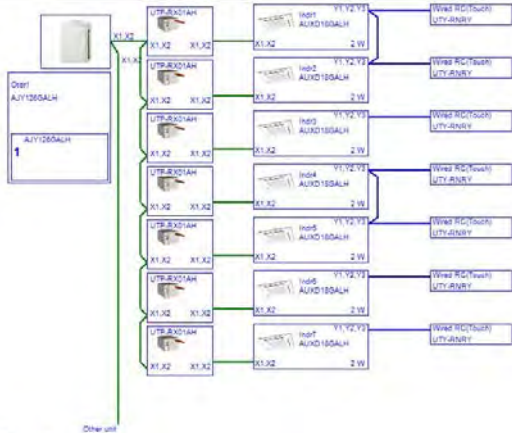
Design Simulator

Design Simulator

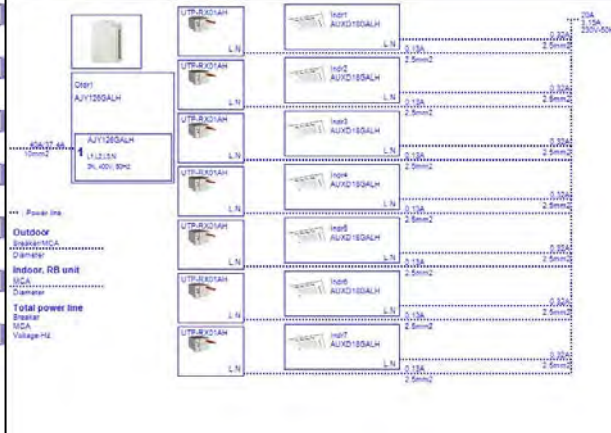
Piping Diagrams

Wiring Diagrams (Transmission line)

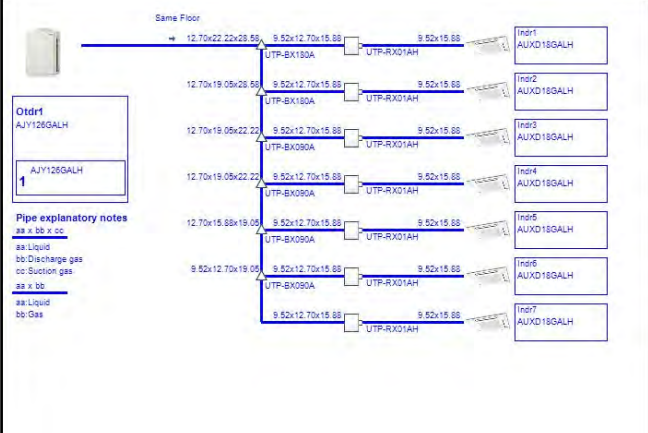
Wiring Diagrams (Power line)



Transmission line
Size : 0.33mm(22AWG)
Wire type : LEVEL 4 (NEMA) non-polar 2-core twisted pair solid core diameter 0.08mm
Remarks : LVN100P100SB compatible cable
Regulator connector line
Size : 0.33-1.28mm(22-16AWG)



Outdoor
Indoor, RB unit
Total power line
Diameter
Voltage Hz

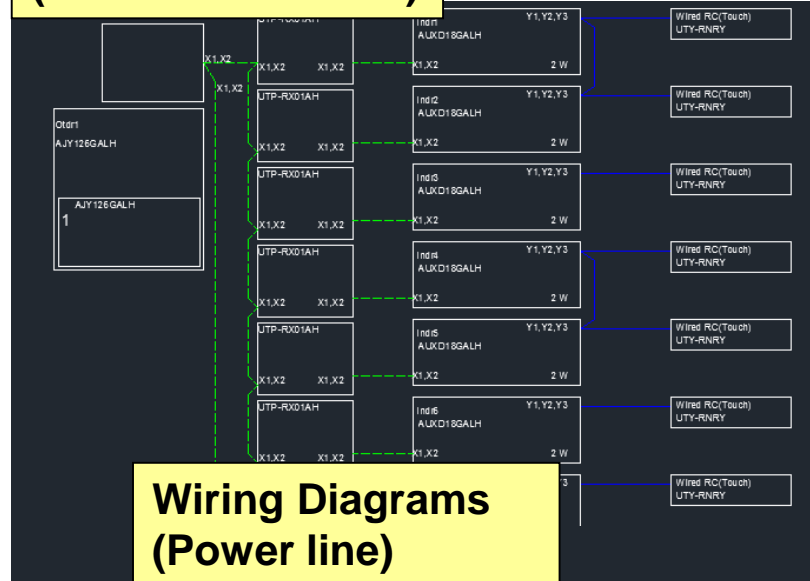


Pipe explanatory notes
aa x bb x cc
aa: Liquid
bb: Discharge gas
cc: Suction gas
aa x bb
aa: Liquid
bb: Gas

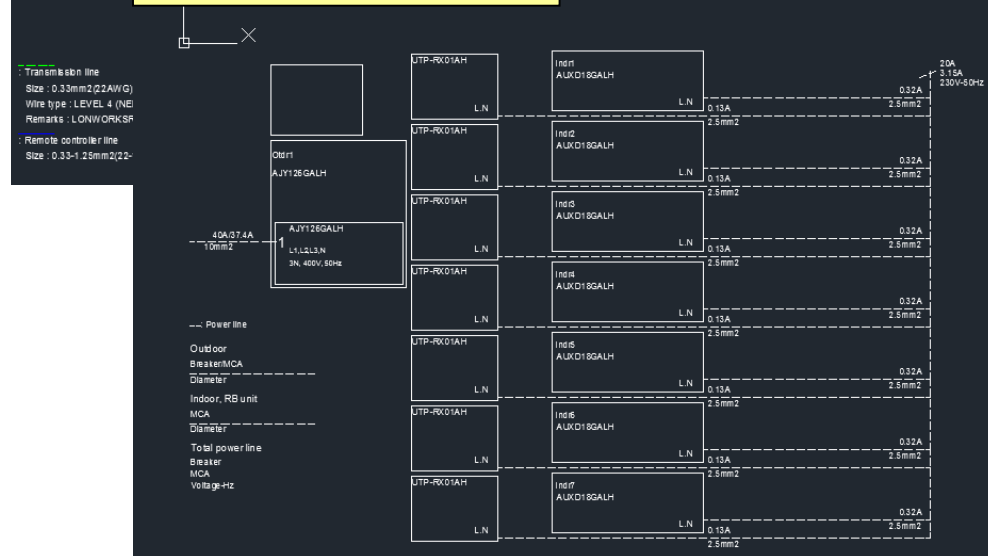
Piping Diagrams



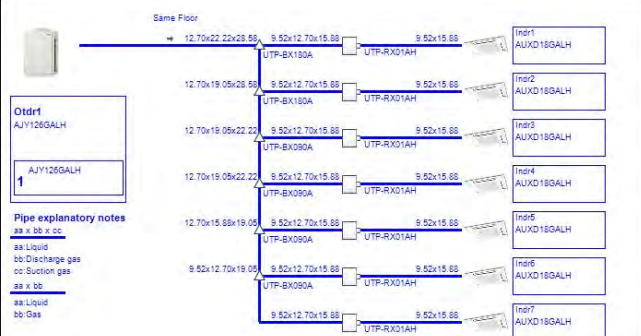
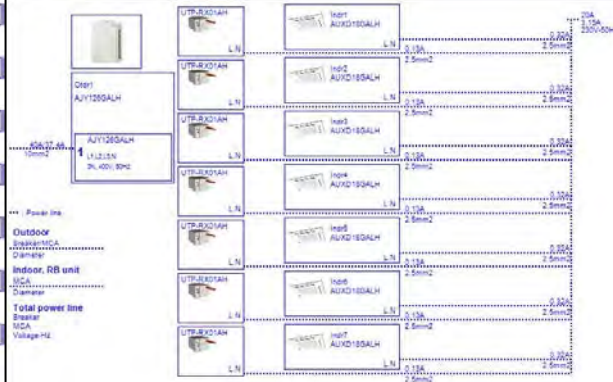
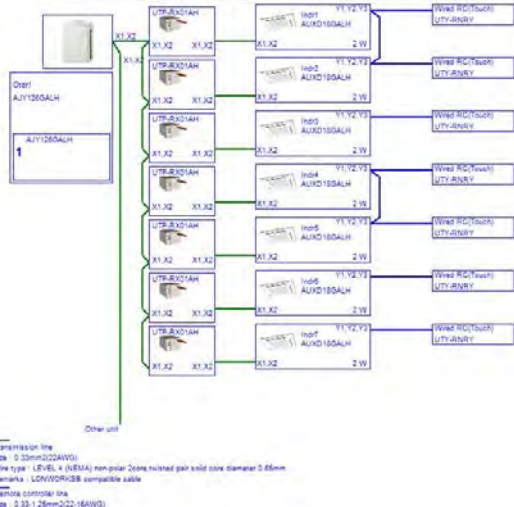
Wiring Diagrams (Transmission line)



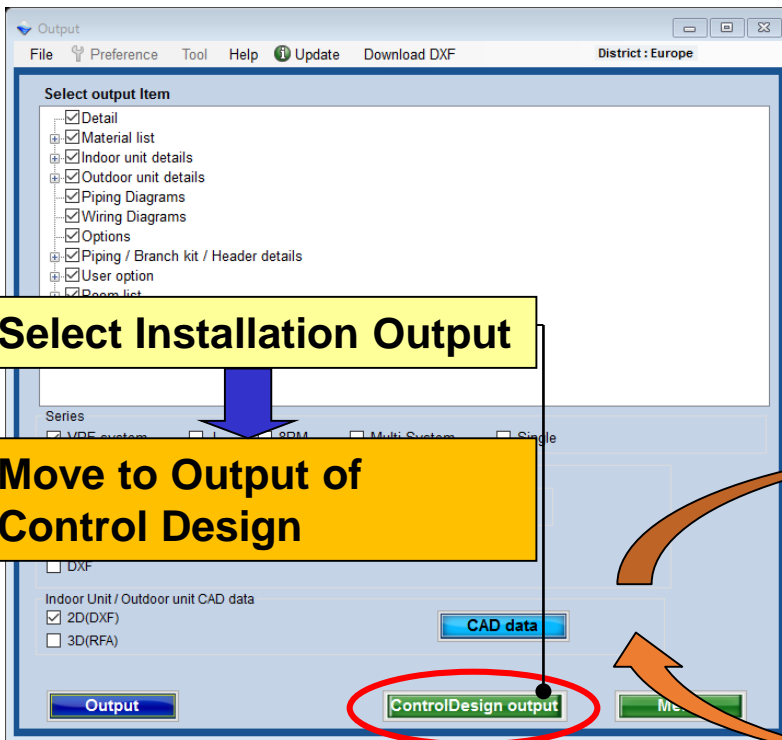
Wiring Diagrams (Power line)



Wiring Diagrams (Power line)

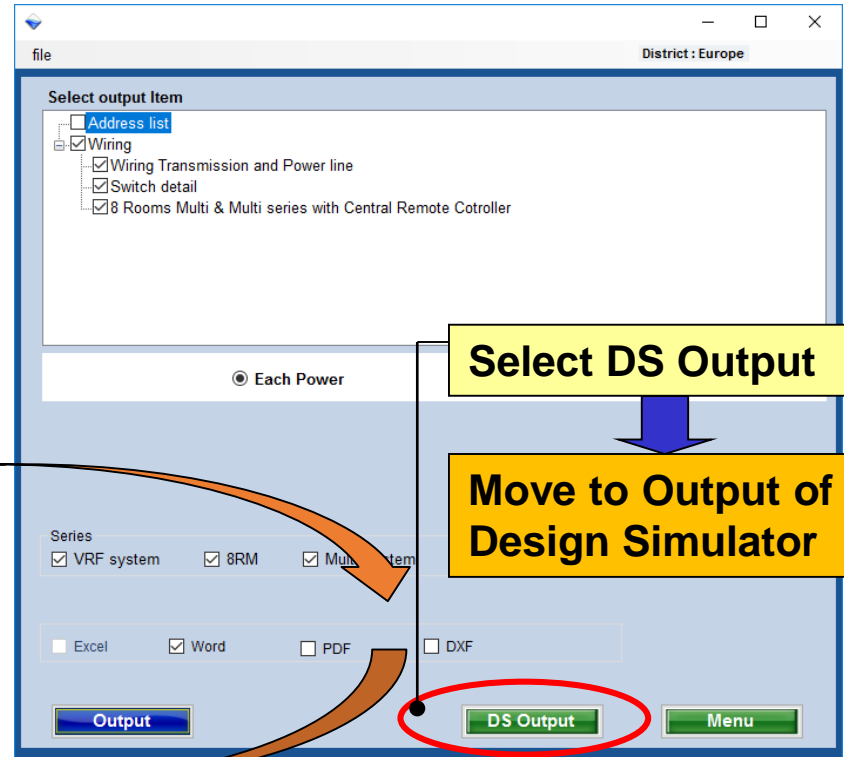


Installation Output



Select Installation Output

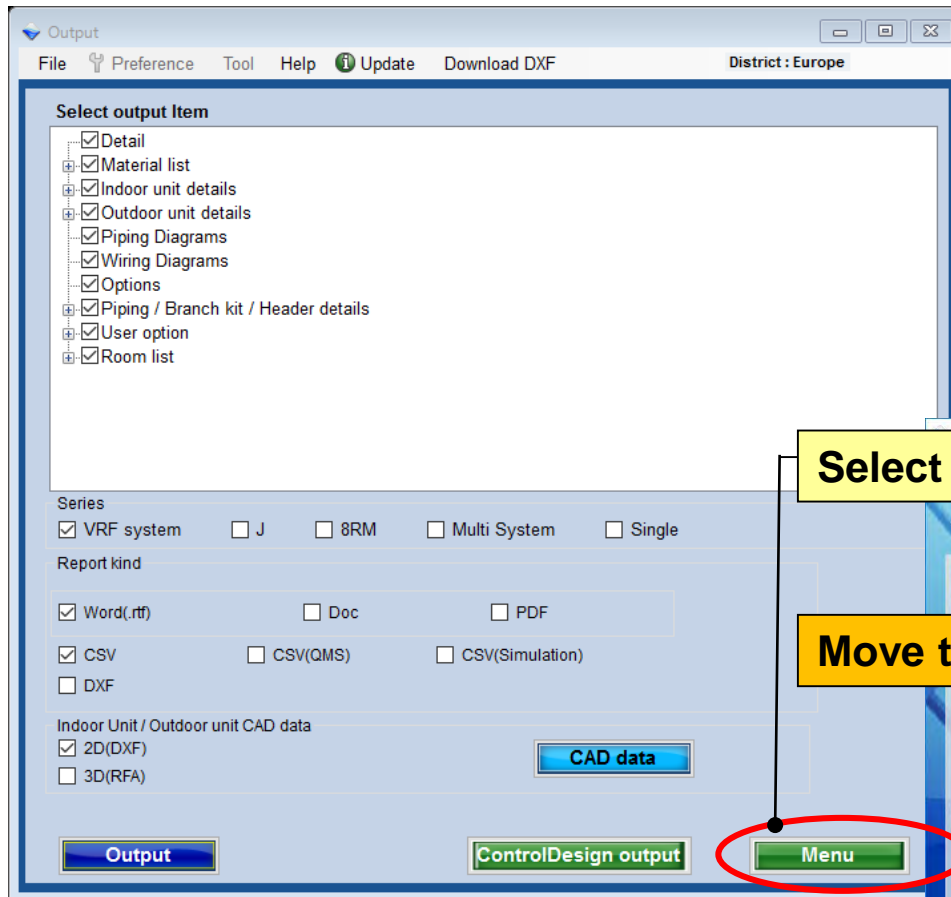
Move to Output of Control Design



Select DS Output

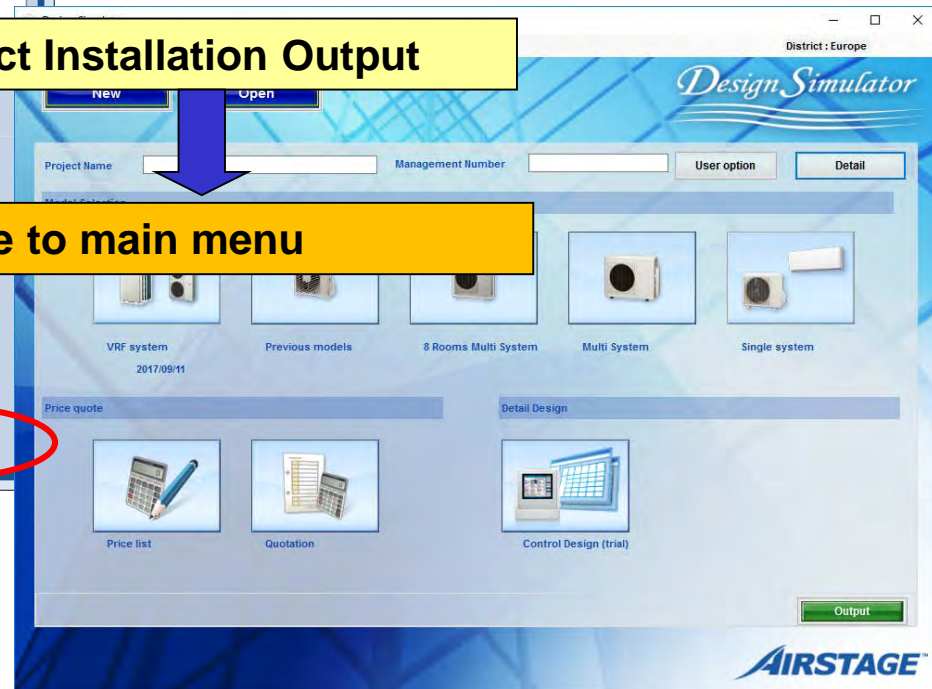
Move to Output of Design Simulator

Menu



Select Installation Output

Move to main menu



Output

File Preference Tool Help Update Download DXF

Select output item

- ☒ Detail
- ☒ Material list
- ☒ Indoor unit details
- ☒ Outdoor unit details
- ☒ Piping Diagrams
- ☒ Wiring Diagrams
- ☒ Options
- ☒ Piping / Branch kit / Header details
- ☒ User option
- ☒ Room list

Series

☒ VRF system ☐ J ☐ 8RM ☐ Multi System ☐ Single

Report kind

☒ Word(.rtf) ☐ Doc ☐ PDF

☒ CSV ☐ CSV(QMS) ☐ CSV(Simulation)

☐ DXF

Indoor Unit / Outdoor unit CAD data

☒ 2D(DXF) ☐ 3D(RFA)

CAD data

Output ControlDesign output Menu

Select Indoor unit CAD data

Open CAD data

Open CAD date

Select Creation date

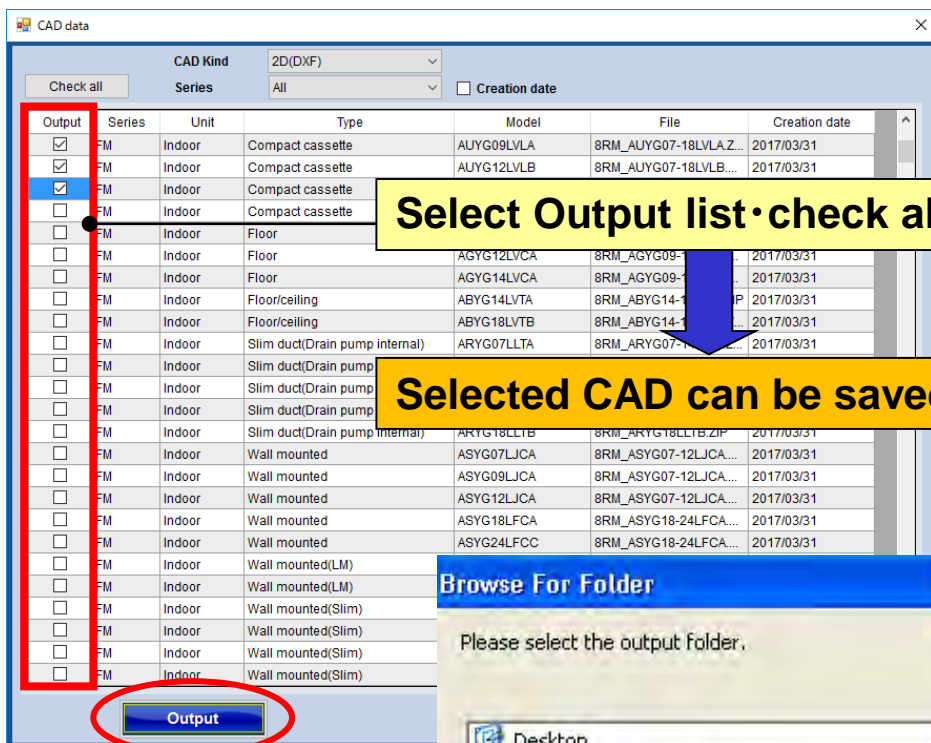
All items of Output list can be checked

Only selected CAD can be output

Select Check all
All items of Output list can be checked

Select Output list
Only selected CAD can be output

CAD date (2/2)

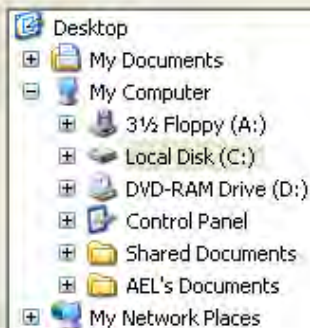


Select Output list • check all

Selected CAD can be saved

Browse For Folder

Please select the output folder.

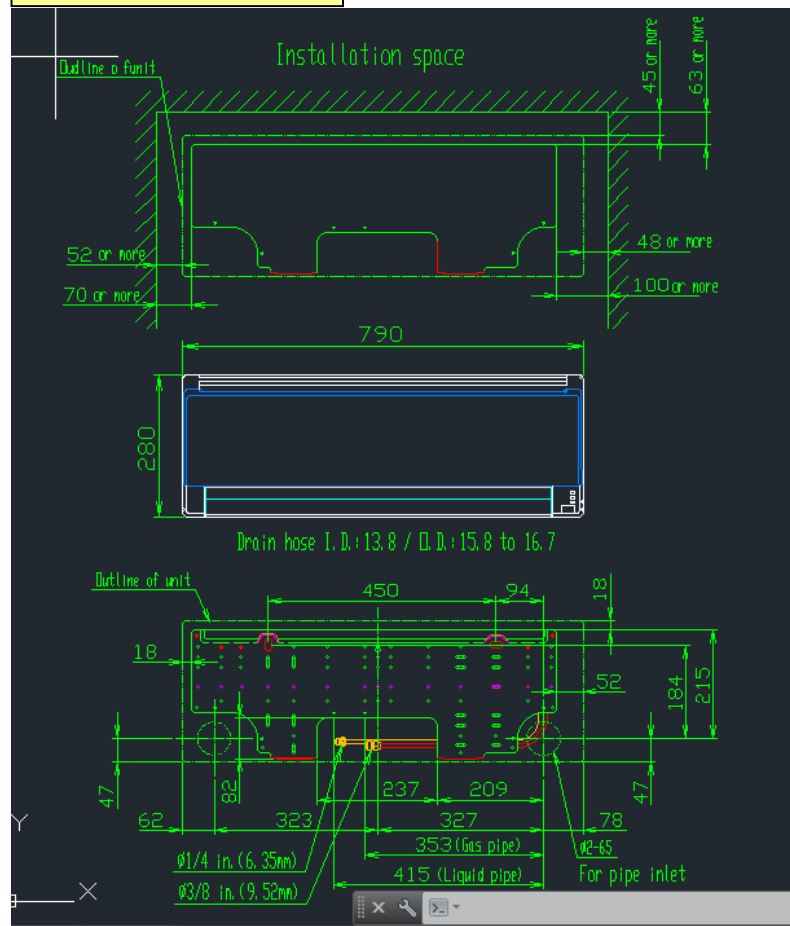


Make New Folder

OK

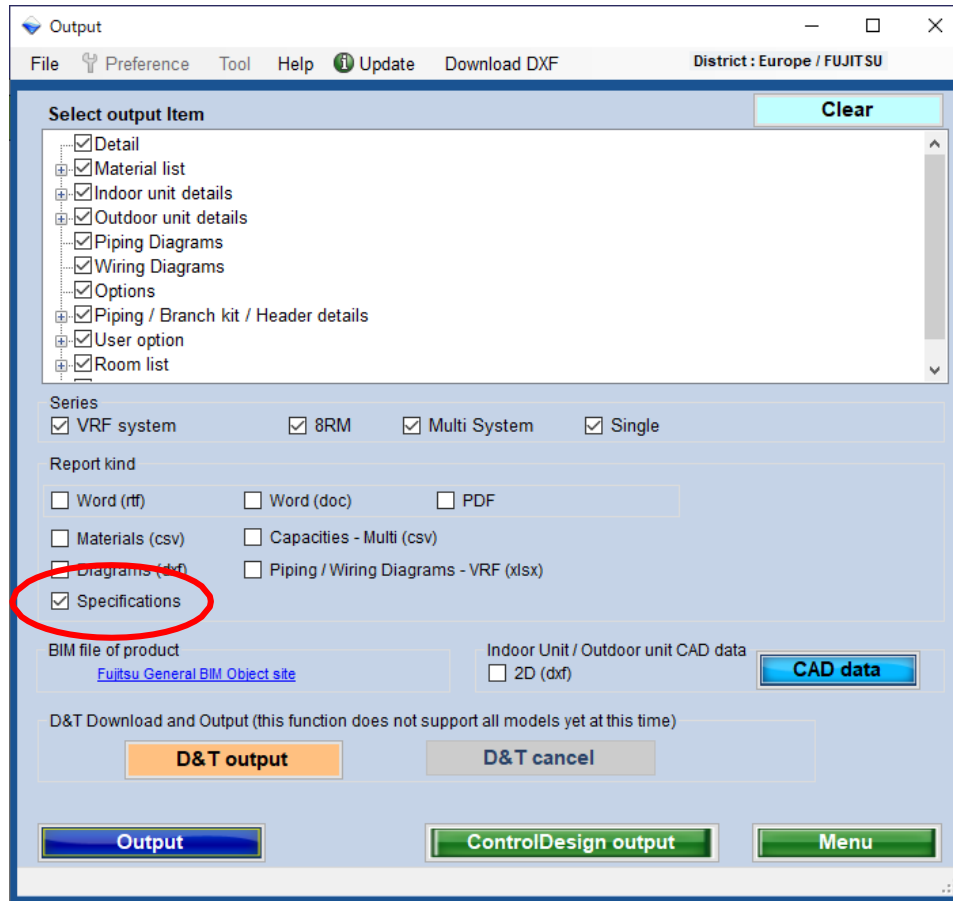
Cancel

CAD File



Specifications

Output a specifications document file automatically combined ones of selected models.



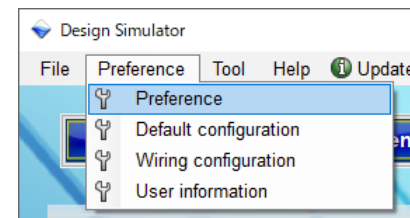
Output



One file for a project

[setting]

Source folder containing document files for models is specified in Preference at Menu.



Specs



[note]

Specification document file for each model have to be prepared.