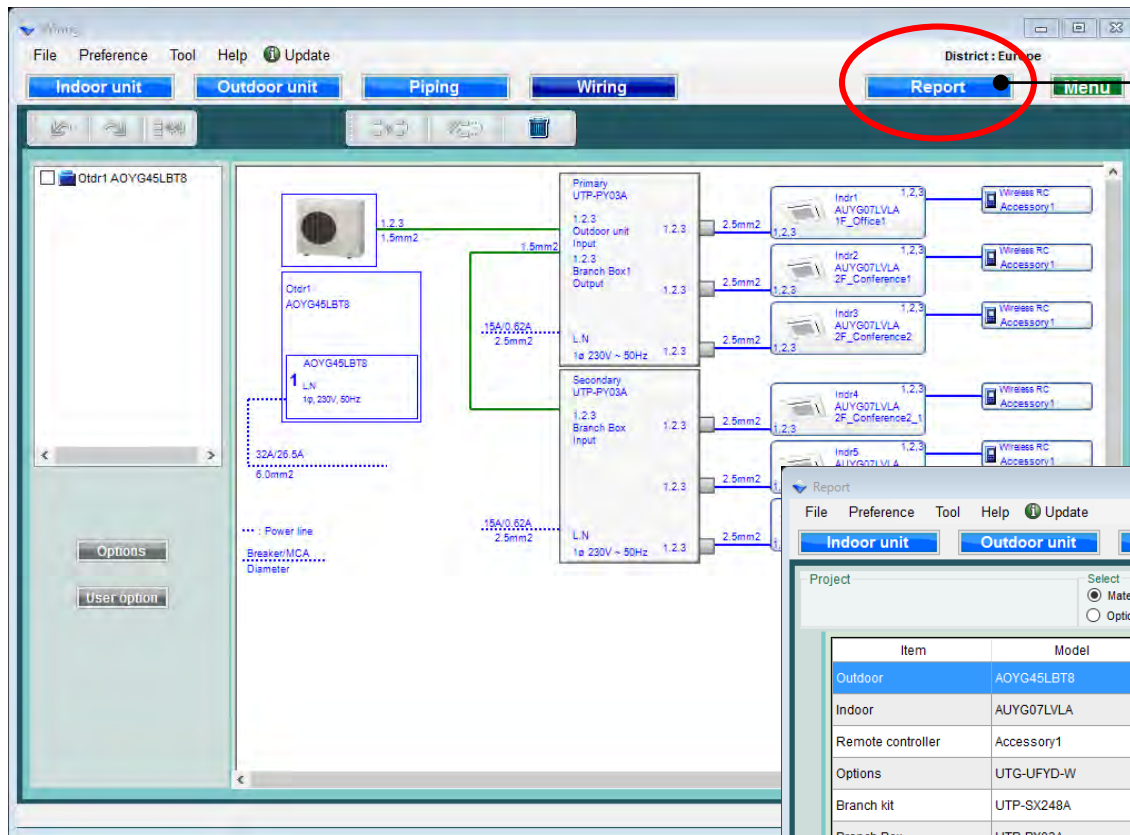


Report

Design Simulator



Select "Report"

Change to report initial screen

The Report window displays the following information:

Project

Select

☒ Material list ☐ Indoor unit ☐ Outdoor unit ☐ Option 1

☐ Option 2 ☐ User options(Project) ☐ User options(Refrigerant)

| Item | Model | Quantity | Type | Remarks1 | Remarks2 |
|-------------------|------------|----------|------------------------|-----------|--------------------|
| Outdoor | AOYG45LBT8 | 1 | 8 Rooms Multi System | | |
| Indoor | AUYG07LVLA | 6 | Compact cassette | | |
| Remote controller | Accessory1 | 6 | Wireless RC(Accessory) | | |
| Options | UTG-UFYD-W | 6 | Cassette Grille | | |
| Branch kit | UTP-SX248A | 1 | Separation tube | | |
| Branch Box | UTP-PY03A | 2 | Branch Box | | |
| Pipe | 6.35 | 0.0 | | Unit: m | Total pipe length: |
| Pipe | 9.52 | 0.0 | | Unit: m | Total pipe length: |
| Pipe | 15.88 | 0.0 | | Unit: m | Total pipe length: |
| Refrigerant | R410A | 0.0 | | Unit: lbs | Total Refrigerant: |

Material list

Report

File Preference Tool Help Update

District : Europe

Indoor unit Outdoor unit Piping Wiring Report Menu

Project

Select

☒ Material list ☐ Indoor unit ☐ Outdoor unit ☐ Option 1

☐ Option 2 ☐ User options(Project) ☐ User options(Refrigerant)

Output

| Item | Model | Quantity | Type | Remarks1 |
|-------------------|------------|----------|------------------------|----------|
| Outdoor | AOYG45LBT8 | 1 | 8 Rooms Multi System | |
| Indoor | AUYG07LVLA | 6 | Compact cassette | |
| Remote controller | Accessory1 | 6 | Wireless RC(Accessory) | |
| Options | UTG-UFYD-W | 6 | Cassette Grille | |
| Branch kit | UTP-SX248A | 1 | Separation tube | |
| Branch Box | UTP-PY03A | 2 | Branch Box | |
| Pipe | 6.35 | 0.0 | | Unit m |
| Pipe | 9.52 | 0.0 | | Unit m |
| Pipe | 15.88 | 0.0 | | Unit m |
| Refrigerant | R410A | 0.0 | | Unit lbs |

Total pipe length:

Total Refrigerant:

Select "Material list"

It is possible to confirm the data

All material list
Specifications of indoor units
Specifications of outdoor units
All optional parts

Indoor unit

Report

File Preference Tool Help Update

District : Europe

Indoor unit Outdoor unit Piping Wiring Report Menu

Project







Select

☒ Indoor unit ☐ Outdoor unit ☐ Option 1

☐ Material list ☐ Option 2 ☐ User options(Project) ☐ User options(Refrigerant)

Output

Otdr1

| Name | Image | Model | RC C (kW) | RC H (kW) | Tmp C (C) (WBT) | Rq TC (kW) | TC (kW) | Rq SC (kW) | SC (kW) | Tmp H (C) | F |
|-------|---|------------|-----------|-----------|-----------------|------------|---------|------------|---------|-----------|---|
| Indr1 |  | AUYG07LVLA | 2.05 | 2.37 | 27.0/19.0 | 0.50 | 2.05 | 0.50 | 1.60 | 20.0 | |
| Indr2 |  | AUYG07LVLA | 2.05 | 2.37 | 27.0/19.0 | 0.50 | 2.05 | 0.50 | 1.60 | 20.0 | |
| Indr3 |  | AUYG07LVLA | 2.05 | 2.37 | 27.0/19.0 | 0.50 | 2.05 | 0.50 | 1.60 | 20.0 | |
| Indr4 |  | AUYG07LVLA | 2.05 | 2.37 | 27.0/19.0 | 0.50 | 2.05 | 0.50 | 1.60 | 20.0 | |
| Indr5 |  | AUYG07LVLA | 2.05 | 2.37 | 27.0/19.0 | 0.50 | 2.05 | 0.50 | 1.60 | 20.0 | |
| Indr6 |  | AUYG07LVLA | 2.05 | 2.37 | 27.0/19.0 | 0.50 | 2.05 | 0.50 | 1.60 | 20.0 | |

Select "Indoor unit"

Specifications of indoor units

Outdoor unit

Report

File Preference Tool Help Update

District : Europe

Indoor unit Outdoor unit Piping Wiring Report Menu


Project

Select

☐ Material list ☐ Indoor unit ☒ Outdoor unit ☐ Option 1

☐ Option 2 ☐ User options(Project) ☐ User options(Refrigerant)

Otdr1

| Image | Model | Combination | EER | COP | Comb (%) | RC C (kW) | RC H (kW) | Tmp C (C) | TC (kW) | Tmp H (C) | HC (kW) |
|---|------------|-------------|------|------|----------|-----------|-----------|-----------|---------|-----------|---------|
|  | AOYG45LBT8 | | 2.69 | 3.16 | 87.9 | 14.00 | 16.00 | 35.0 | 12.30 | 7.0 | 14.22 |

Select "Outdoor unit"

Specifications of indoor units

Option 1

Report

File Preference Tool Help Update

District : Europe

Indoor unit Outdoor unit Piping Wiring Report Menu

Project

Select

☐ Material list ☐ Indoor unit ☐ Outdoor unit ☒ Option 1

☐ Option 2 ☐ User options(Project) ☐ User options(Refrigerant)

Output

Otdr1

| Unit | Item | Model | Quantity | Type | Remarks1 |
|-------|-------------------|------------|----------|------------------------|----------|
| Indr1 | Remote controller | Accessory1 | 1 | Wireless RC(Accessory) | |
| Indr1 | Options | UTG-UFYD-W | 1 | Cassette Grille | |
| Indr2 | Remote controller | Accessory1 | 1 | Wireless RC(A | |
| Indr2 | Options | UTG-UFYD-W | 1 | Cassette Grille | |
| Indr3 | Remote controller | Accessory1 | 1 | Wireless RC(A | |
| Indr3 | Options | UTG-UFYD-W | 1 | Cassette Grille | |
| Indr4 | Remote controller | Accessory1 | 1 | Wireless RC(Accessory) | |
| Indr4 | Options | UTG-UFYD-W | 1 | Cassette Grille | |
| Indr5 | Remote controller | Accessory1 | 1 | Wireless RC(Accessory) | |
| Indr5 | Options | UTG-UFYD-W | 1 | Cassette Grille | |
| Indr6 | Remote controller | Accessory1 | 1 | Wireless RC(Accessory) | |
| Indr6 | Options | UTG-UFYD-W | 1 | Cassette Grille | |
| | Branch kit | UTP-SX248A | 1 | Separation tube | |
| | Branch Box | UTP-PY03A | 2 | Branch Box | |
| | Pipe | 6.35 | 0.0 | | Unit: m |
| | Pipe | 9.52 | 0.0 | | Unit: m |
| | Pipe | 15.88 | 0.0 | | Unit: m |

Select "Option 1"

Option information is output

User option(Project)

Report

File Preference Tool Help Update

District : Europe

Indoor unit Outdoor unit Piping Wiring Report Menu

Project

Select

☐ Indoor unit ☐ Outdoor unit ☐ Option 1

☒ User options(Project) ☐ User options(Refrigerant)

Output

| Inside classification | Small classification | User option | Quantity |
|-----------------------|----------------------|-------------|----------|
| B1 | bb1 | DDD | 1 |
| B1 | bb1 | EEE | 1 |

Select "User option(Project)"

User option(Refrigerant)

The screenshot shows the 'Report' window of the 'Design Simulator'. The interface includes a menu bar (File, Preference, Tool, Help, Update), a toolbar with buttons for 'Indoor unit', 'Outdoor unit', 'Piping', 'Wiring', 'Report', and 'Menu', and a 'District : Europe' label. Below the toolbar, there is a 'Project' section with a 'Select' area containing radio buttons for 'Material list', 'Option 2', 'Indoor unit', 'User options(Project)', 'Outdoor unit', 'User options(Refrigerant)', and 'Option 1'. The 'User options(Refrigerant)' option is selected and circled in red. A yellow callout box points to this option with the text 'Select "User option(Refrigerant)"'. Below the selection area, there is a table with columns: 'Inside classification', 'Small classification', 'User option', and 'Quantity'. The table contains three rows of data.

| Inside classification | Small classification | User option | Quantity |
|-----------------------|----------------------|-------------|----------|
| A1 | A11 | A111 | 1 |
| A1 | A11 | A112 | 1 |
| C1 | D1 | 111 | 1 |