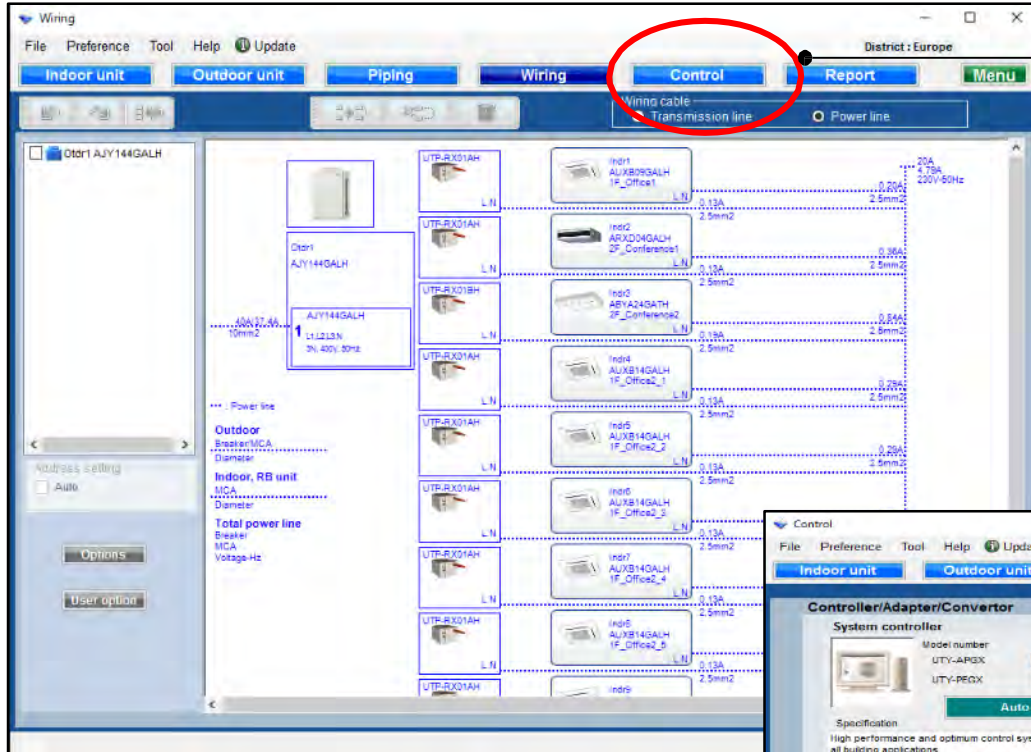


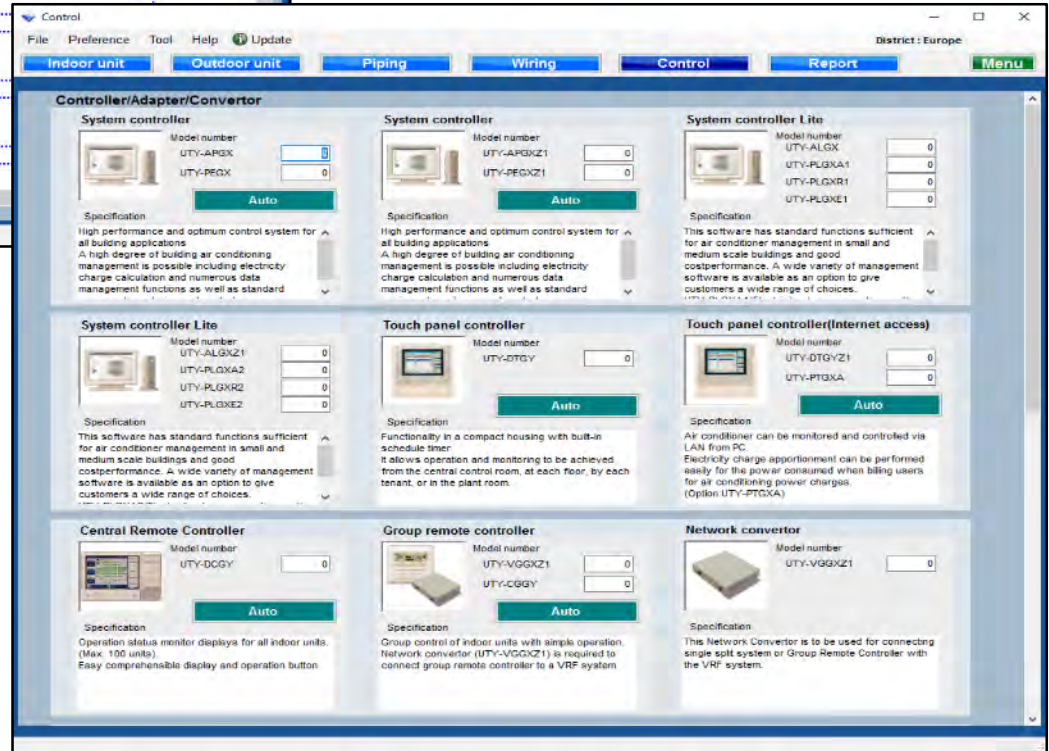
Merkezi kontrol ayarları

Dizayn Simülatör



“Kontrol” seç

Merkezi kontrol başlangıç ekranına değiştirme



Control

File Preference Tool Help Update District : Europe

Indoor unit Outdoor unit Piping Wiring Control Report Menu

Controller/Adapter/Convertor

System controller

Model number
UTY-APGX

UTY-PEGX

Auto

Specification
High performance and optimum control system for all building applications
A high degree of building air conditioning management is possible including electricity charge calculation and numerous data management functions as well as standard

System controller

Model number
UTY-APGXZ1

Specification
High performance and optimum control system for all building applications
A high degree of building air conditioning management is possible including electricity charge calculation and numerous data management functions as well as standard

System controller Lite

Model number
UTY-ALGX
UTY-PLGXA1

Specification
High performance and optimum control system for all building applications
A high degree of building air conditioning management is possible including electricity charge calculation and numerous data management functions as well as standard

System controller Lite

Model number
UTY-ALGXZ1
UTY-PLGXA2
UTY-PLGXR2
UTY-PLGXE2

Specification
This software has standard functions sufficient for air conditioner management in small and medium scale buildings and good costperformance. A wide variety of management software is available as an option to give customers a wide range of choices.

Touch panel controller

Model number
UTY-DTGY

Auto

Specification
Functionality in a compact housing with built-in schedule timer
It allows operation and monitoring to be achieved from the central control room, at each floor, by each tenant, or in the plant room.

Touch panel controller(Internet access)

Model number
UTY-DTGYZ1
UTY-PTGXA

Auto

Specification
Air conditioner can be monitored and controlled via LAN from PC.
Electricity charge apportionment is possible easily for the power consumer for air conditioning power consumption (Option:UTY-PTGXA)

Central Remote Controller

Model number
UTY-DCGY

Auto

Specification
Operation status monitor displays for all indoor units. (Max. 100 units).
Easy comprehensible display and operation button.

Group remote controller

Model number
UTY-VGGXZ1
UTY-CGGY

Auto

Specification
Group control of indoor units with simple operation.
Network convertor (UTY-VGGXZ1) is required to connect group remote controller to a VRF system.

Network convertor

Model number
UTY-VGGXZ1

Specification
This Network Convertor is to be used for connecting single split system or Group Remote Controller with the VRF system.

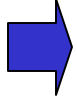
Merkezi kontrolörün giriş miktarı

"Otomatik" seçildiğinde, gerekli minimum tutar otomatik olarak hesaplanır.

Detail Design



Control Design (trial)



Controller

File Preference Help

District : Europe

VRF system Controller Etc Address Output Menu

Controller Name	Abbreviation	Model	Done	Caution	ALL
<input checked="" type="radio"/> System Controller	SC	UTY-APGX	1	0	1
<input type="radio"/> System Controller Z1	SCZ1	UTY-APGXZ1	0	0	0

Control

File Preference Tool Help Update

Indoor unit Outdoor unit Piping

Controller/Adapter/Convertor

System controller

Model number

UTY-APGX 1

UTY-PEGX 1

Auto

Specification

High performance and optimum control system for all building applications

A high degree of building air conditioning management is possible including electricity charge calculation and numerous data management functions as well as standard

System controller Lite

Model number

UTY-DTGY 0

UTY-PTGXA 0

Auto

Specification

Functionality in a compact housing with built-in schedule timer

It allows operation and monitoring to be achieved from the central control room, at each floor, by each tenant, or in the plant room.

Touch panel controller

Model number

UTY-DTGYZ1 0

UTY-PTGXA 0

Auto

Specification

Air conditioner can be monitored and controlled via LAN from PC.

Electricity charge apportionment can be performed easily for the power consumed when billing users for air conditioning power charges.

(Option:UTY-PTGXA)

Kontrol tasarımında belirlenen birim sayısı aşağıdaki kırmızı Daire parçalarında ayarlanır.

Denetleyicilerin sayısı kontrol tasarımında ayarlandığında, bu ekranda değiştirilemez.

Control

File Preference Tool Help Update

District : Middle East

Indoor unit Outdoor unit Piping Wiring Control Report Menu

The converter for connecting VRF network system to the BMS system built by BACnet® open network, for large sized BMS and VRF network system.
A maximum of four VRF systems (1600 Indoor unit / outdoor unit 400) can be connected to one BACnet® Gateway.

network systems.
Trouble free operation at all times by web monitoring system.
The operation status of the VRF network system within the building can be monitored in real time over the Internet.

Network converters offer total solutions for multiple air-conditioning systems control.
UTY-VTGX(DC power supply type)
UTY-VTGXV(AC power supply type)

Modbus® Converter for VRF

Model number
UTY-VMGX

Auto

Specification
VRF System can be integrated with the Building management system supported by Modbus.

KNX® Converter for VRF

Model number
UTY-VKGX

Auto

Specification
New KNX Converter enables to connect central/home controller and FG VRF system.
A maximum of 128 indoor units and 100 outdoor units can be connected to single KNX Converter.

BACnet® Gateway (Hardware)

Model number
UTY-VBGX

Auto

Specification
BACnet® Gateway enables to connect a BMS and FG VRF system.
A maximum of 128 indoor units and 32 refrigerant system can be connected to a single BACnet® Gateway.
Compatible with BACnet® (ANSI / ASHRAE-135-2010, BACnet® (ANSI / ASHRAE-135-2010))

Group remote controller

Model number
UTY-VGGXZ1
UTY-CGGGU

Auto

Specification
For UAE market only (ESMA regulation)
Group control of indoor units with simple operation.
Network convertor (UTY-VGGXZ1) is required to connect group remote controller to a VRF system.

Yayınlanmamış denetleyicilerin sayısı ayarlanamaz.
*** Sadece alan Tercihe göre ayarlandığında - > marka ayarı**