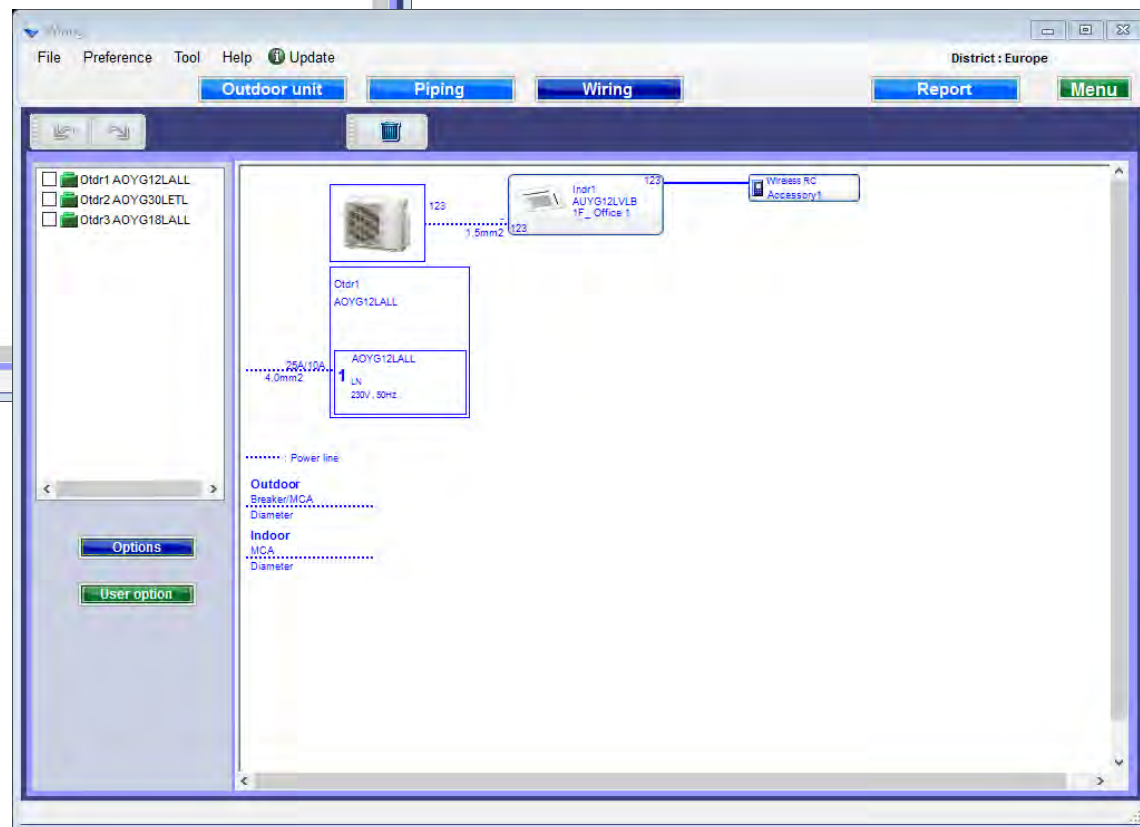
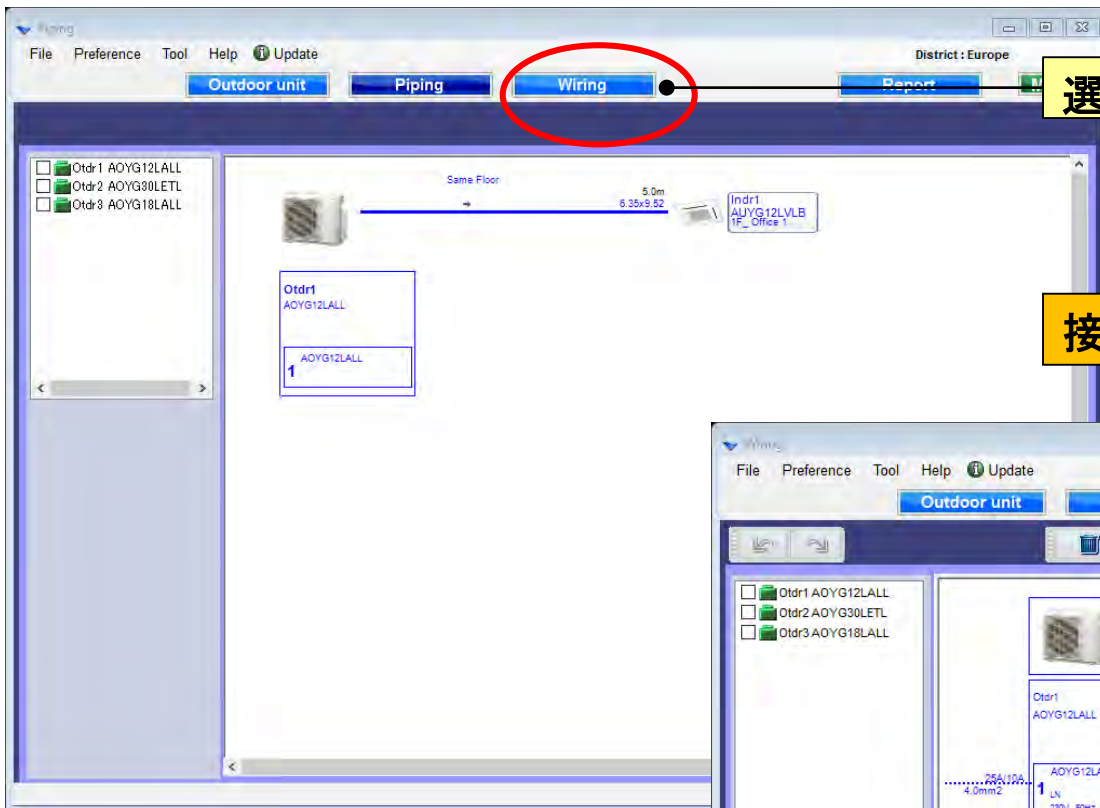


接線設定

選機軟體

選擇“接線”

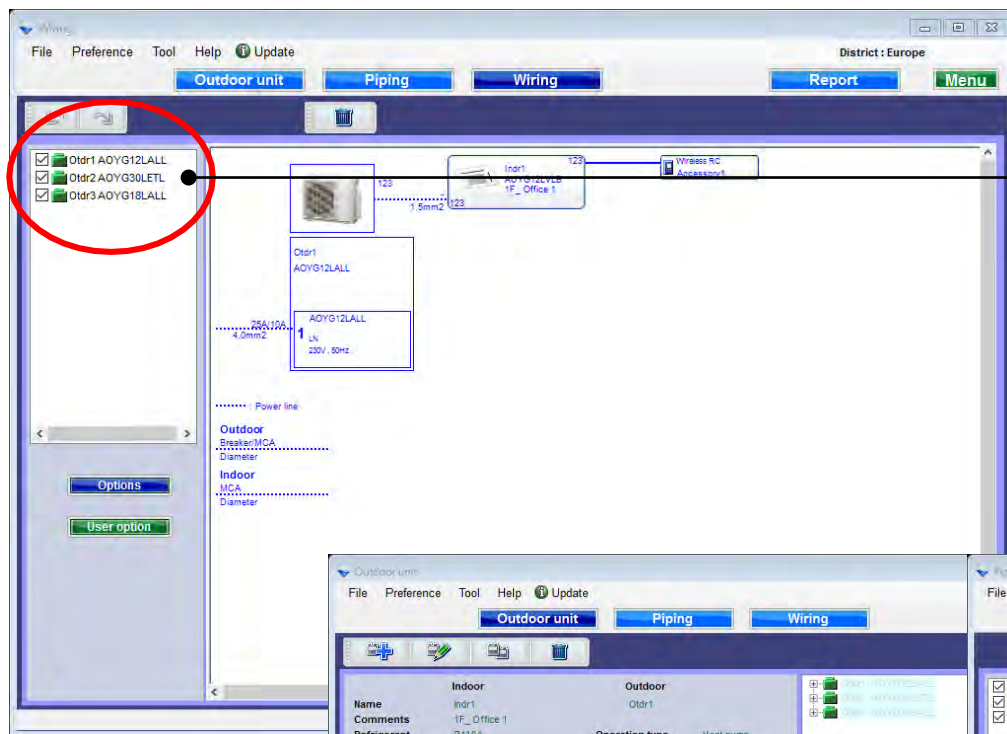
接線系統圖顯示於螢幕上



接線設定

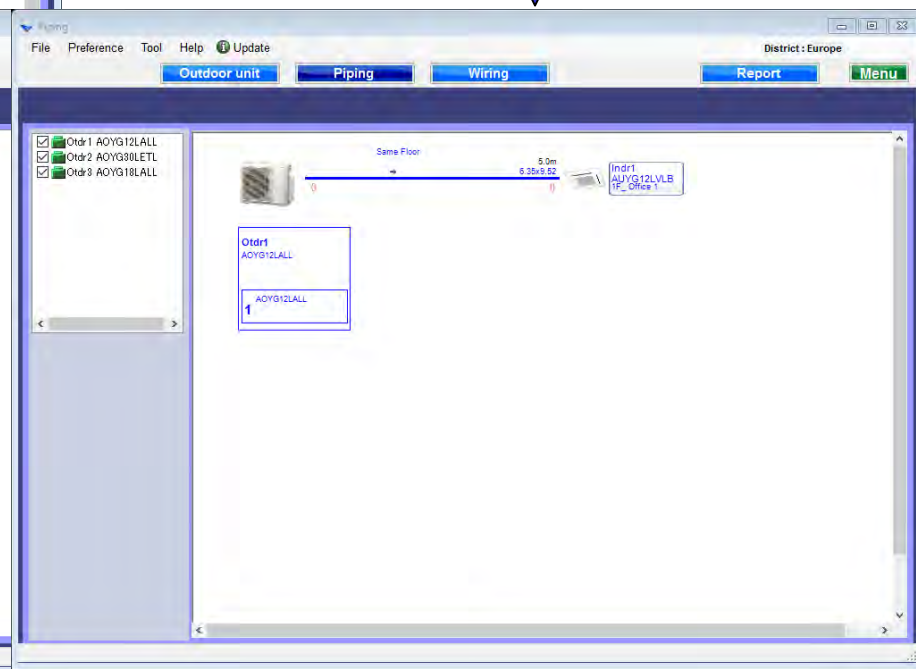
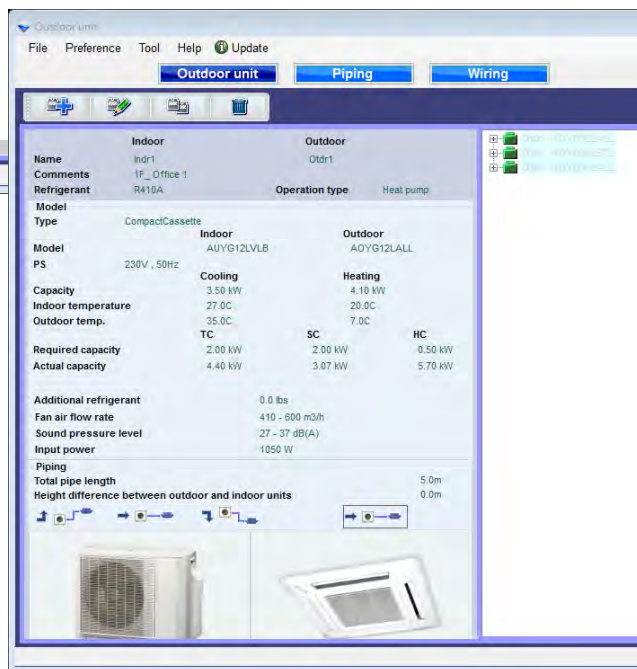
選機軟體

冷媒系統測定

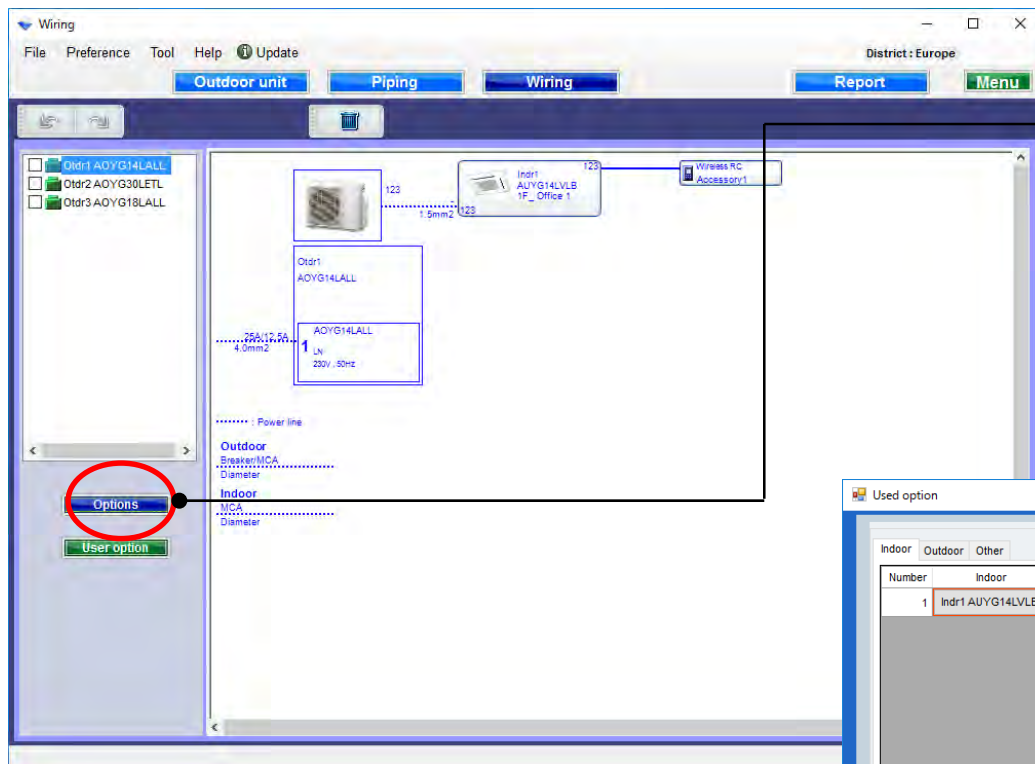


點選冷媒系統

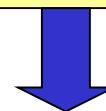
點選冷媒系統
不能在每個視窗上編輯



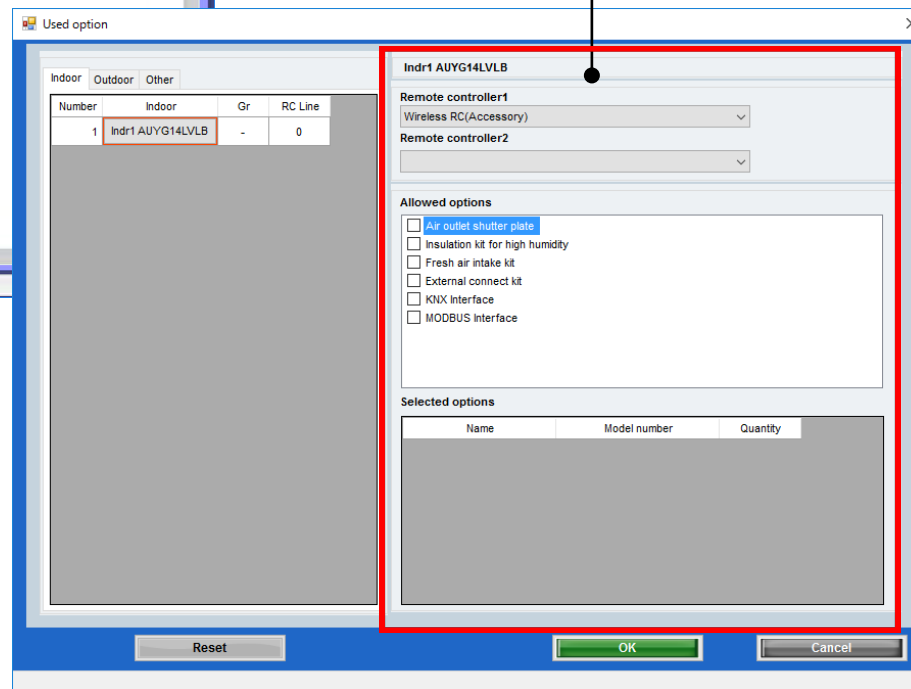
選項



選擇“選項”



打開使用者選項視窗



使用者設定(1/2)

Used option

Indoor Outdoor Other

Number	Indoor	Gr	RC Line
1	Indr1 AUYG14LVLB	-	0

Indr1 AUYG14LVLB

Remote controller1
Wireless RC(Accessory)

Remote controller2

Allowed options

- ☒ Air outlet shutter plate
- ☒ Insulation kit for high humidity
- ☒ Fresh air intake kit
- ☐ External connect kit
- ☐ KNX Interface
- ☐ MODBUS Interface

Selected options

Name	Model number	Quantity
Air outlet shutter plate	UTR-YDZB	1
Insulation kit for high humidity	UTZ-KXGC	1
Fresh air intake kit	UTZ-VXAA	1

Reset OK Cancel

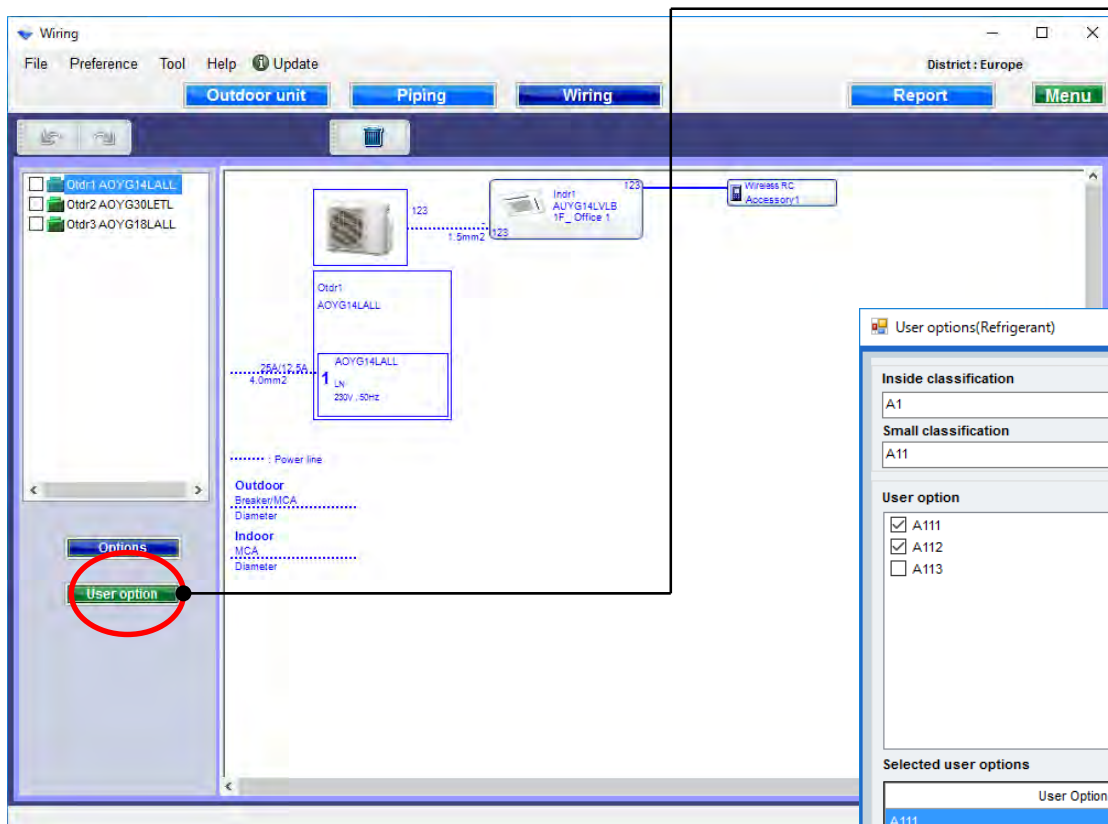
選擇遙控器

選擇可選部件

只顯示選項對應的型號名稱。

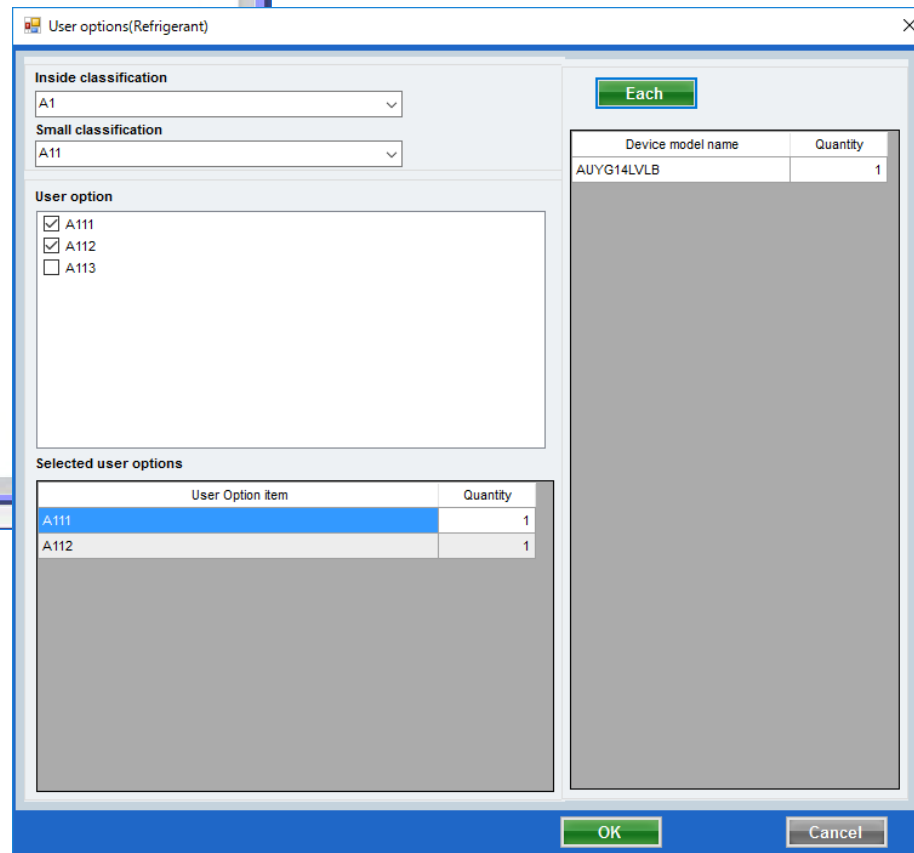
所選選項顯示在“報告”中。

使用者設定(2/2)



選擇“使用者設定”

打開使用者設定(冷媒)



使用者設定(冷媒)

User options(Refrigerant)

Inside classification
A1

Small classification
A11

User option

☒ A111
☒ A112
☐ A113

Selected user options

User Option item	Quantity
A111	1
A112	1

Each

Device model name	Quantity
AUYG14LVLB	1

OK Cancel

選擇“每個或摘要”

選擇“內部分類”

選擇“小分類”

點選“用戶選項”

輸入“數量”

所選選項顯示在“報告”中。