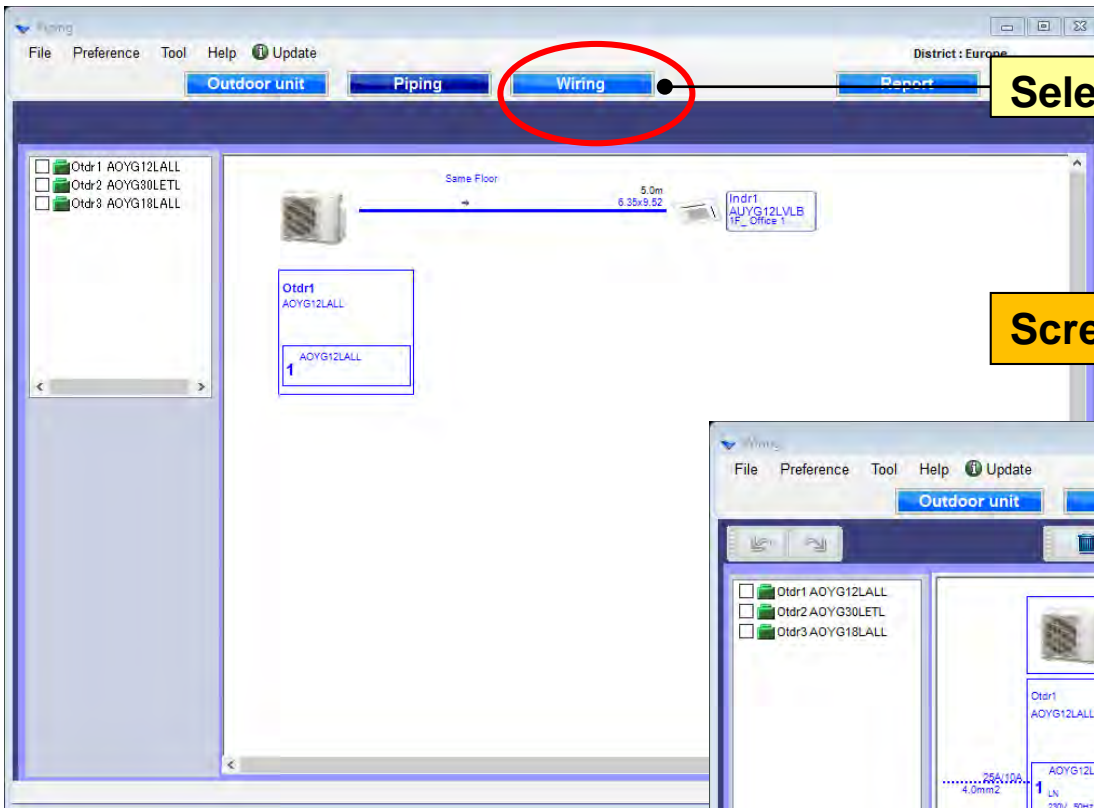


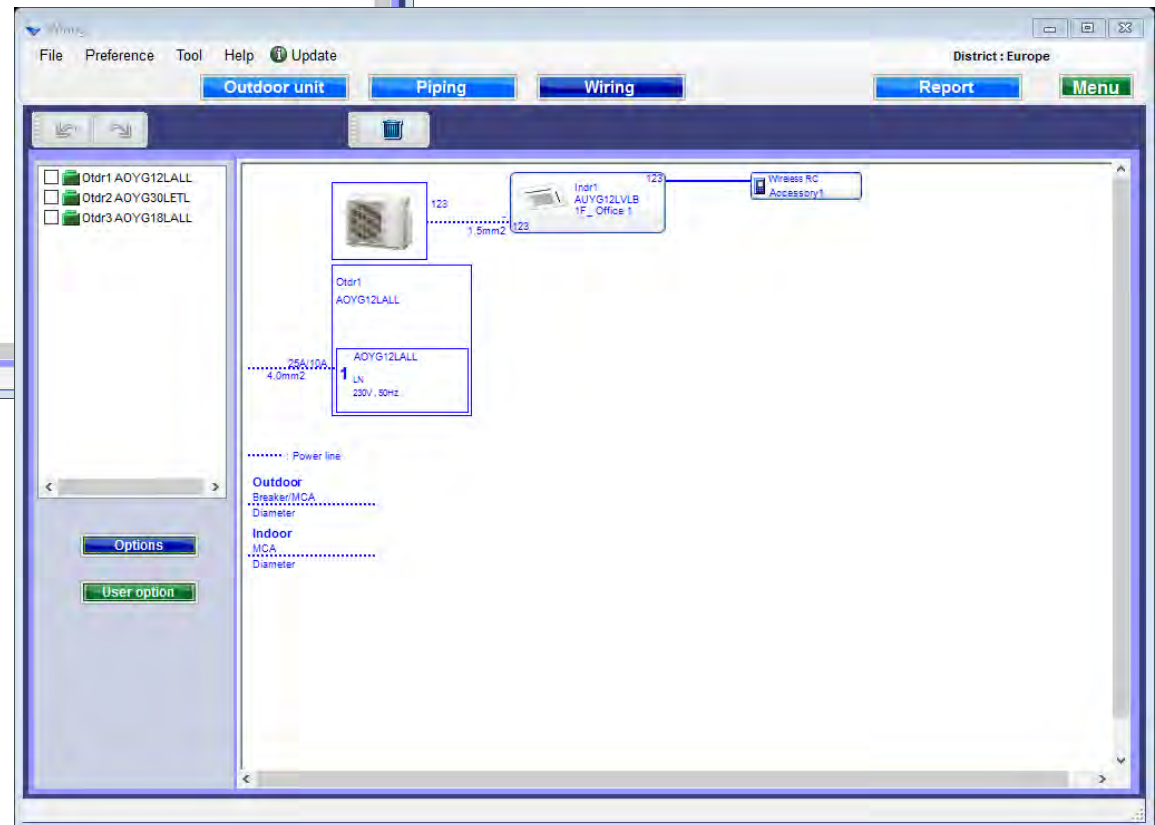
Wiring settings

Design Simulator

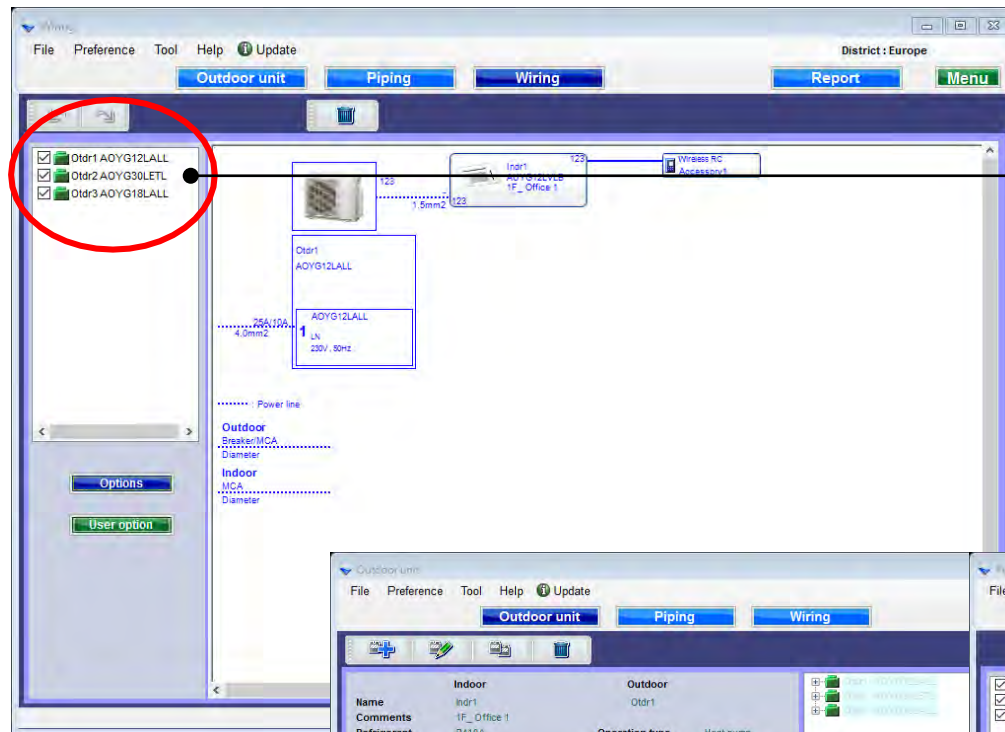


Select "Wiring"

Screen Wiring system diagram creation

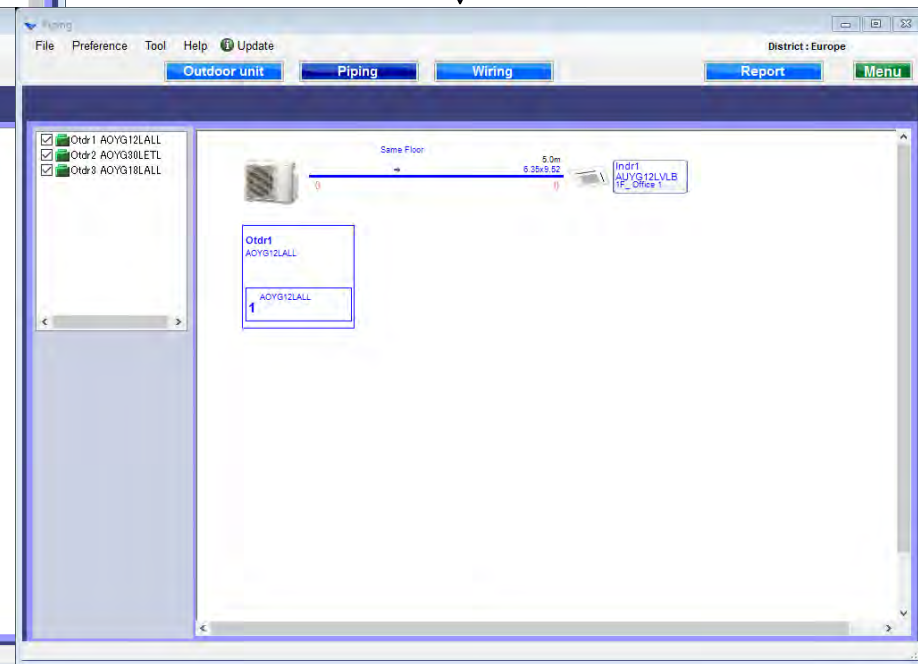
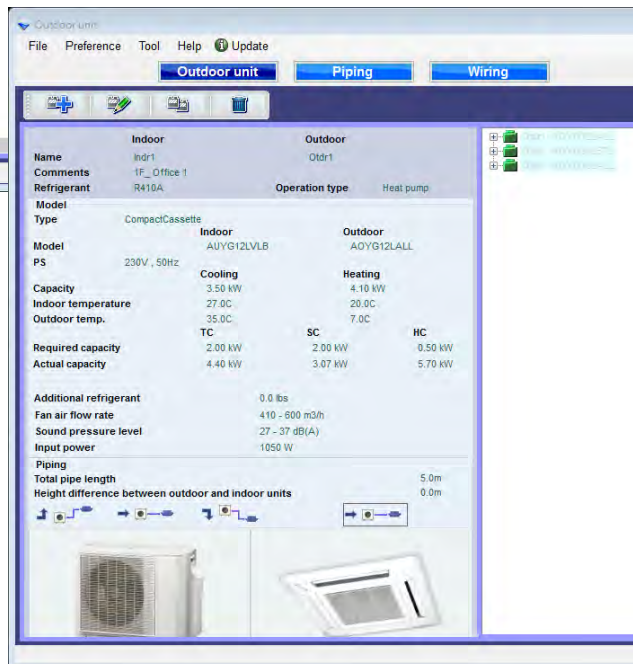


Refrigerant system determination

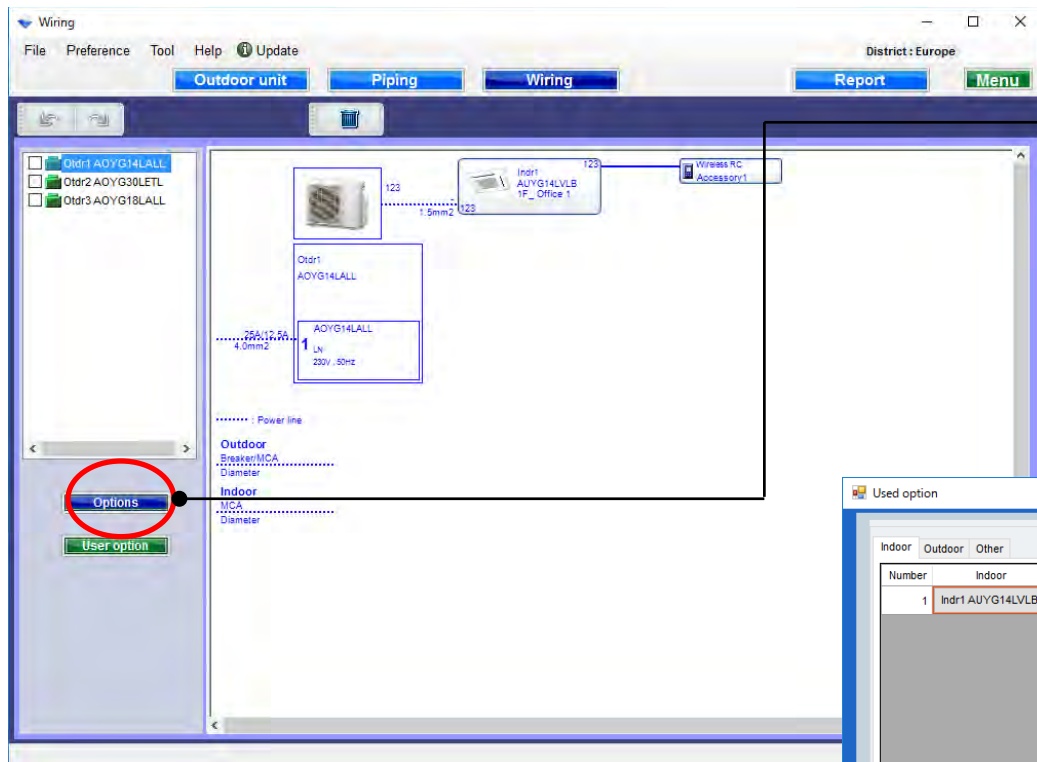


Check the refrigerant system

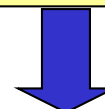
Checked refrigerant system
cannot be edited at each screen



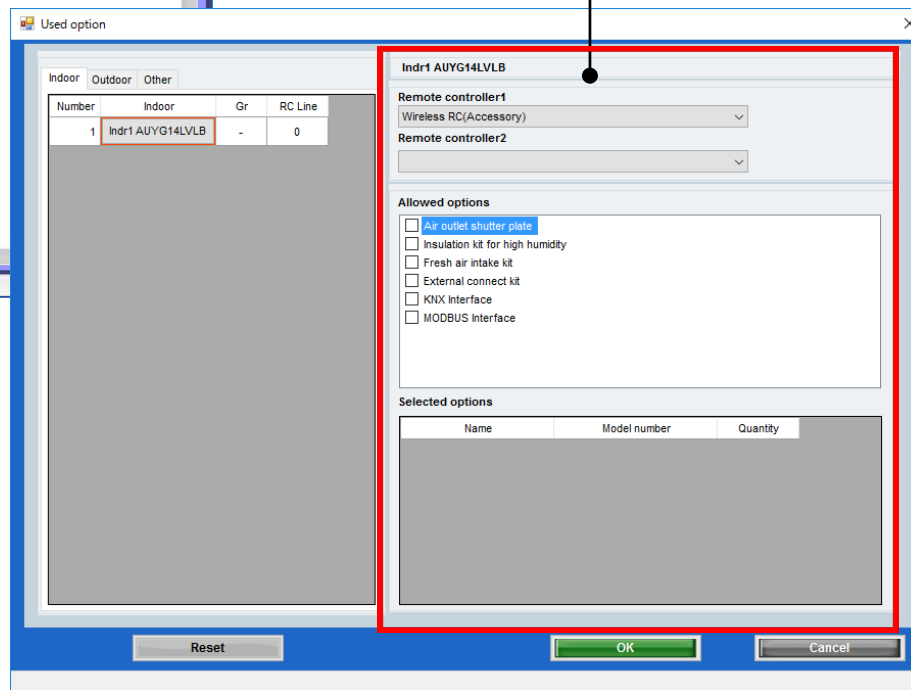
Options



Select "Options "



Open used option screen.



Used option(1/2)

Indoor Outdoor Other

Number	Indoor	Gr	RC Line
1	Indr1 AUYG14LVLB	-	0

Indr1 AUYG14LVLB

Remote controller1
Wireless RC(Accessory)

Remote controller2

Allowed options

- ☒ Air outlet shutter plate
- ☒ Insulation kit for high humidity
- ☒ Fresh air intake kit
- ☐ External connect kit
- ☐ KNX Interface
- ☐ MODBUS Interface

Selected options

Name	Model number	Quantity
Air outlet shutter plate	UTR-YDZB	1
Insulation kit for high humidity	UTZ-KXGC	1
Fresh air intake kit	UTZ-VXAA	1

Reset OK Cancel

Select remote controller

Select Optional parts

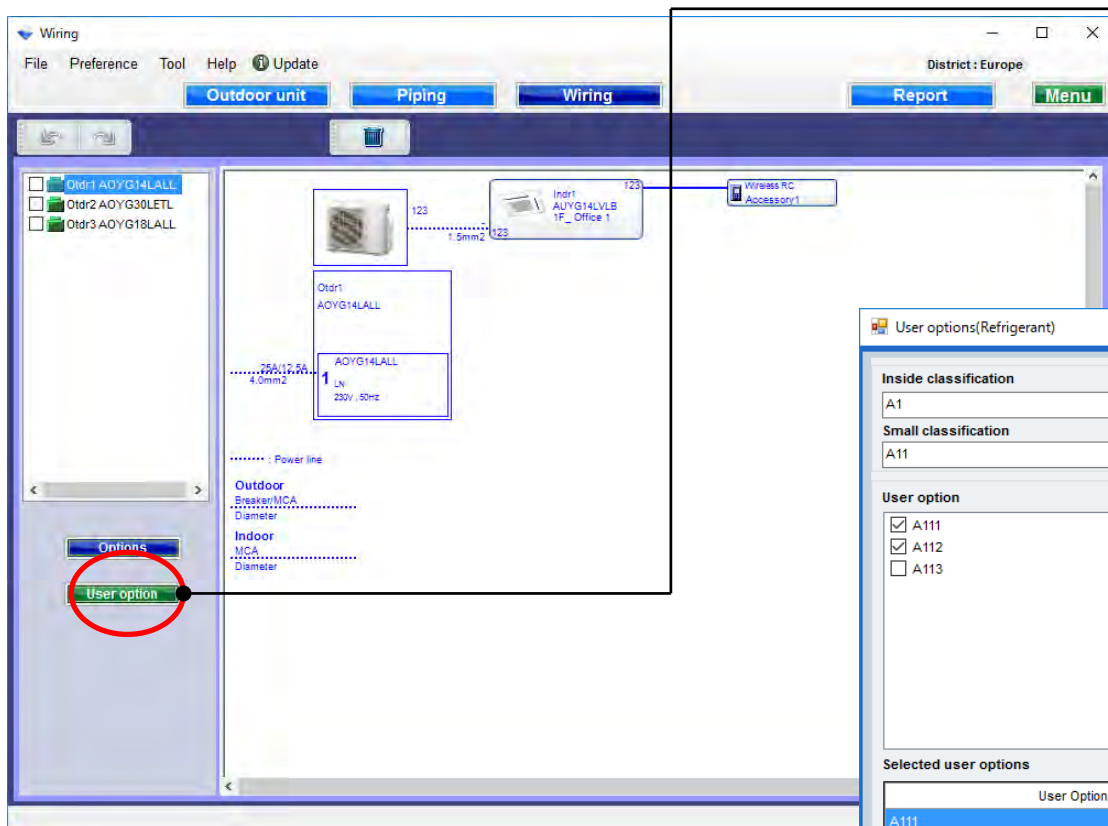
Only the model name of option to correspond is displayed.

The selected options are displayed in "Report".

Wiring settings

Design Simulator

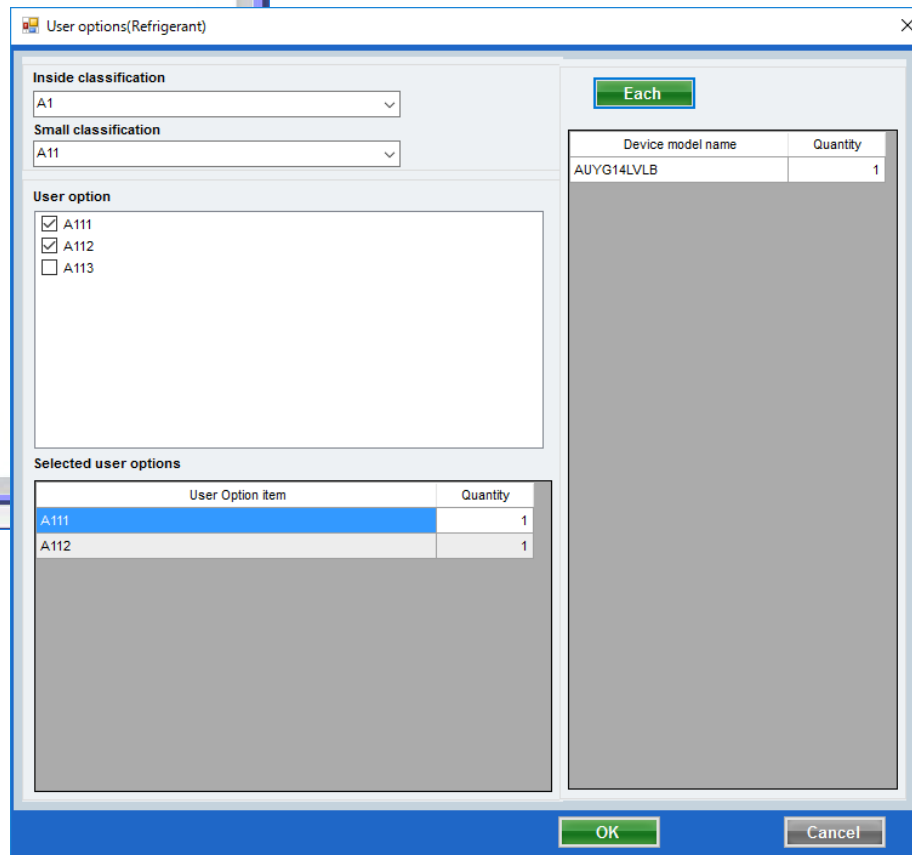
Used option(2/2)



Select "User Options"



Open User options (Refrigerant)



User option (Refrigerant)

User options(Refrigerant)

Inside classification
A1

Small classification
A11

User option

☒ A111
☒ A112
☐ A113

Selected user options

User Option item	Quantity
A111	1
A112	1

Each

Device model name	Quantity
AUYG14LVLB	1

OK Cancel

Select "Each or Summary"

Select "Inside classification"

Select "Small classification"

Check "User option"

Input "Quantity"

The selected options are displayed in "Report".