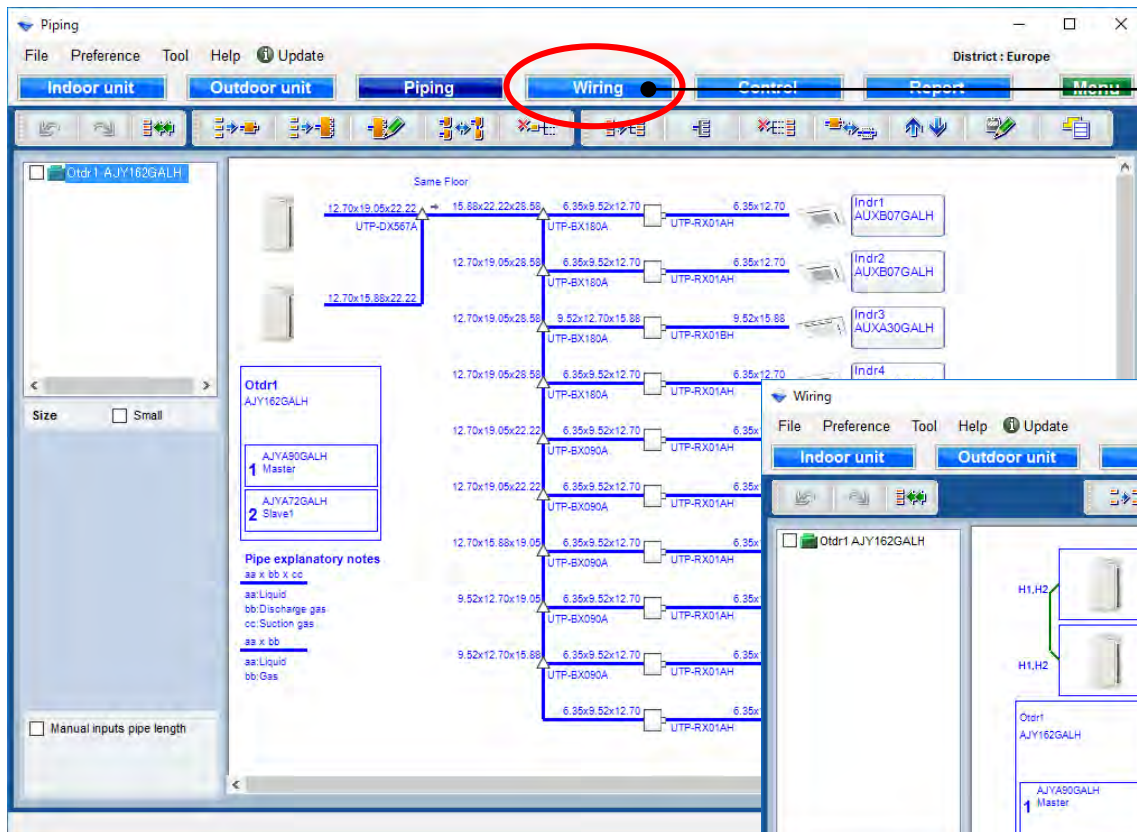


Wiring settings

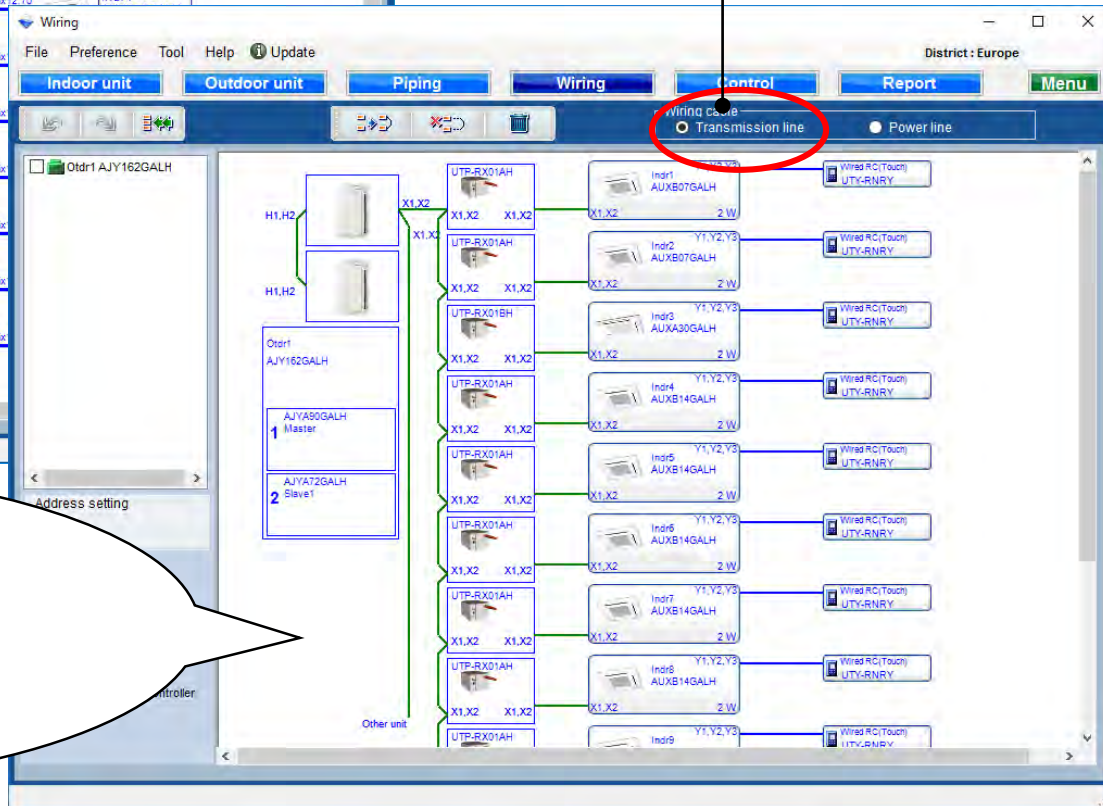
Design Simulator

Transmission line



Select "Wiring"

Select "Transmission line"



: Transmission line

: Remote controller line

Wiring settings

Design Simulator

Power line

Select "Wiring"

Select "Power line"

... : Power line

Outdoor Breaker/MCA Diameter

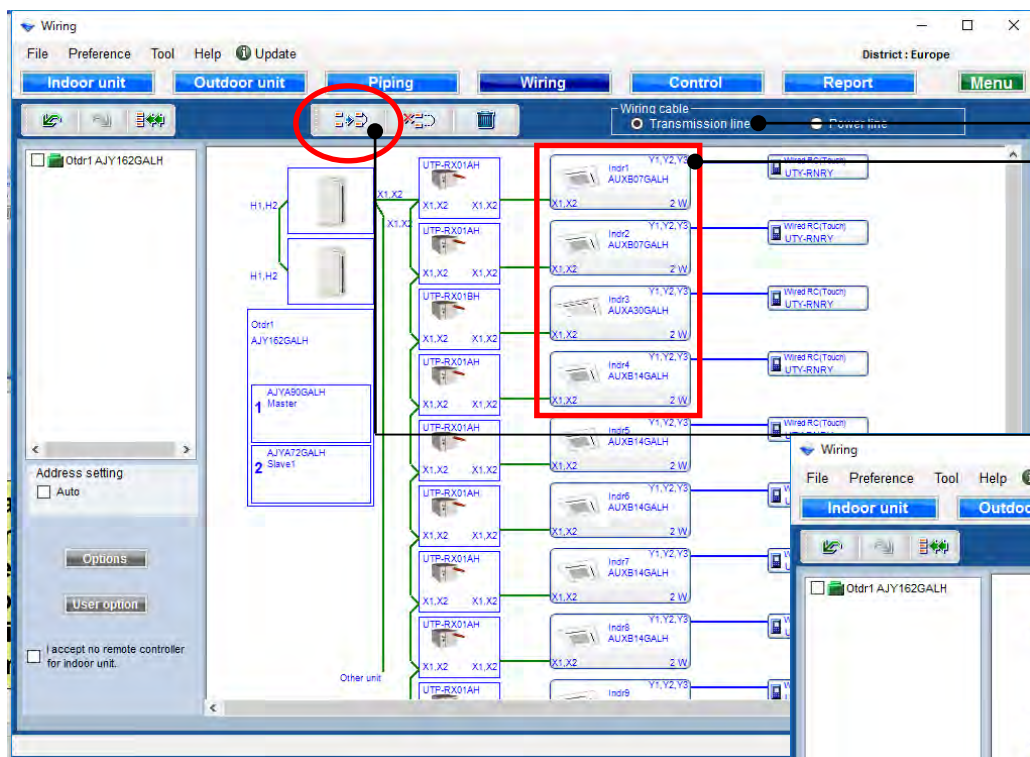
Indoor, RB unit MCA Diameter

Total power line Breaker MCA Voltage-Hz

Wiring settings

Design Simulator

Grouping(1/2)

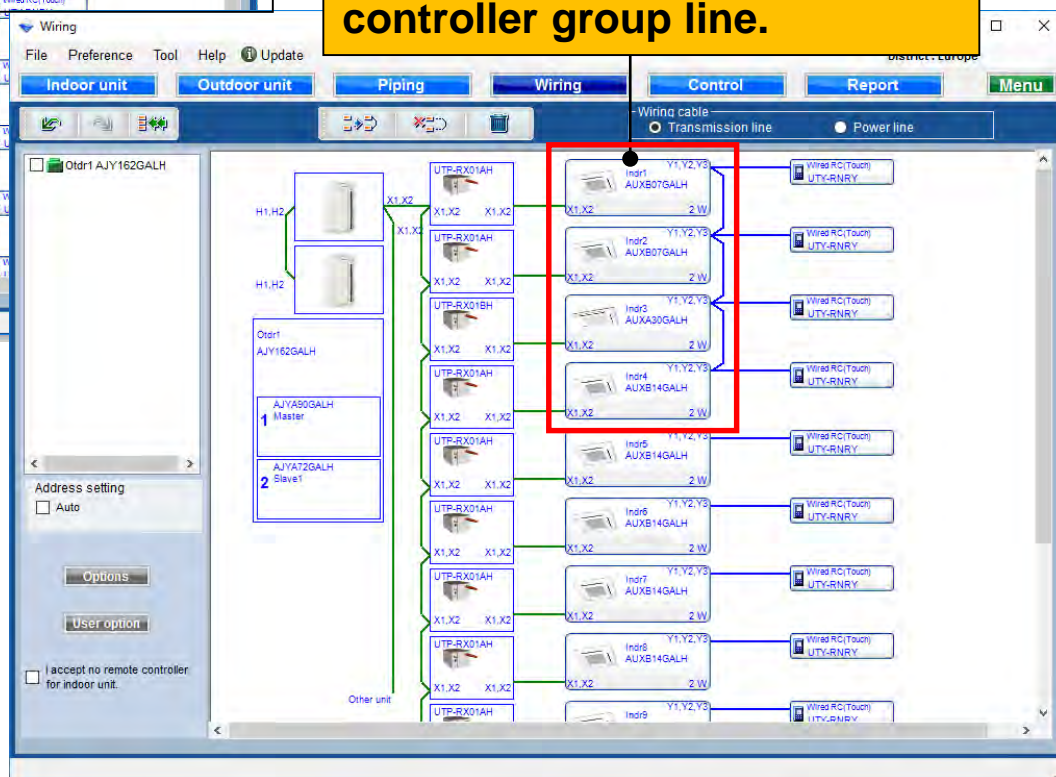


“Total powerline / Each powerline”
with “preference” can be edited

Select indoor unit

Select “Group remote controller”

Automatically create remote
controller group line.



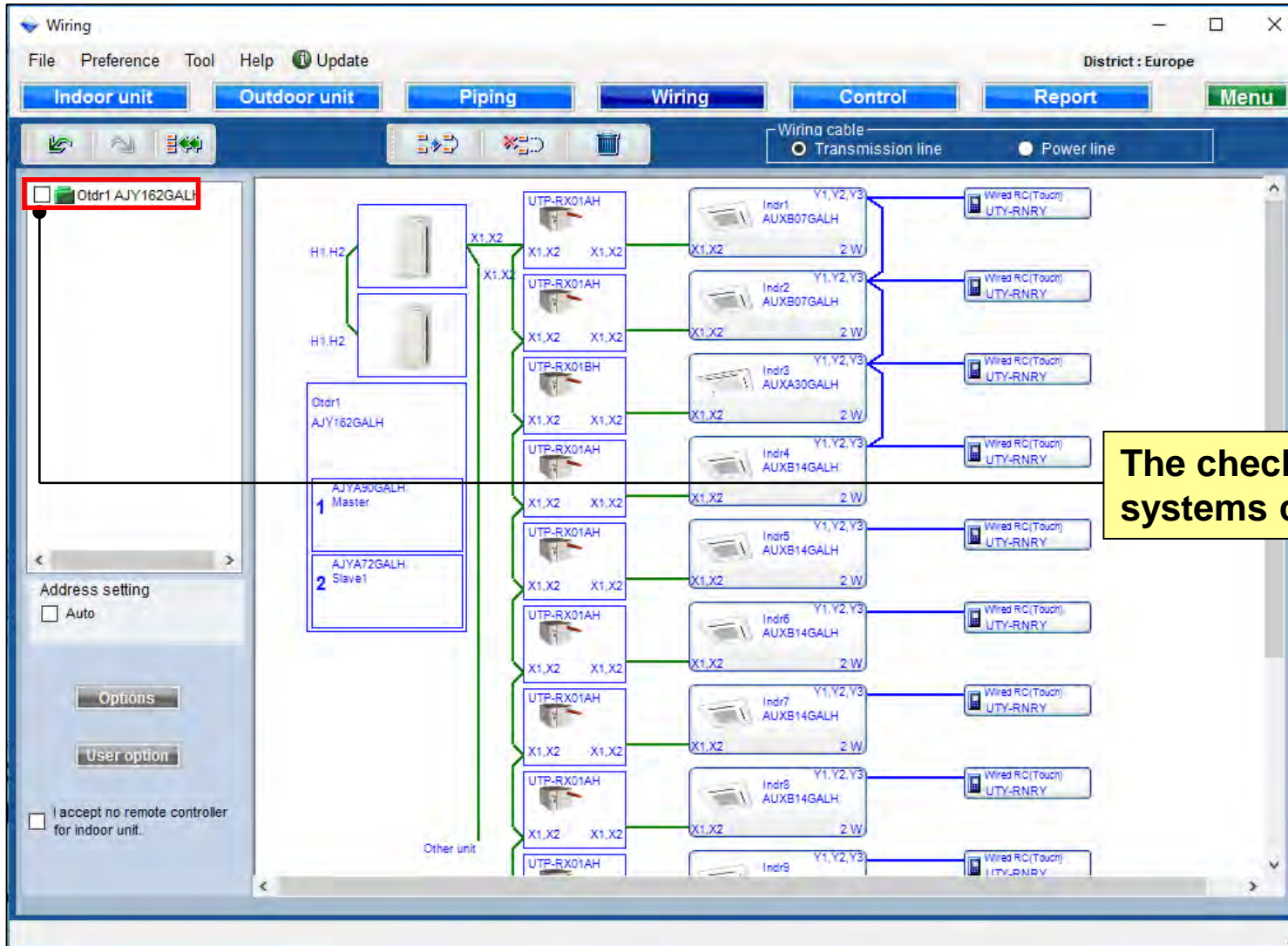
Grouping(2/2)

Select "Undo / do / Reset combine"

Select "Release grouping"

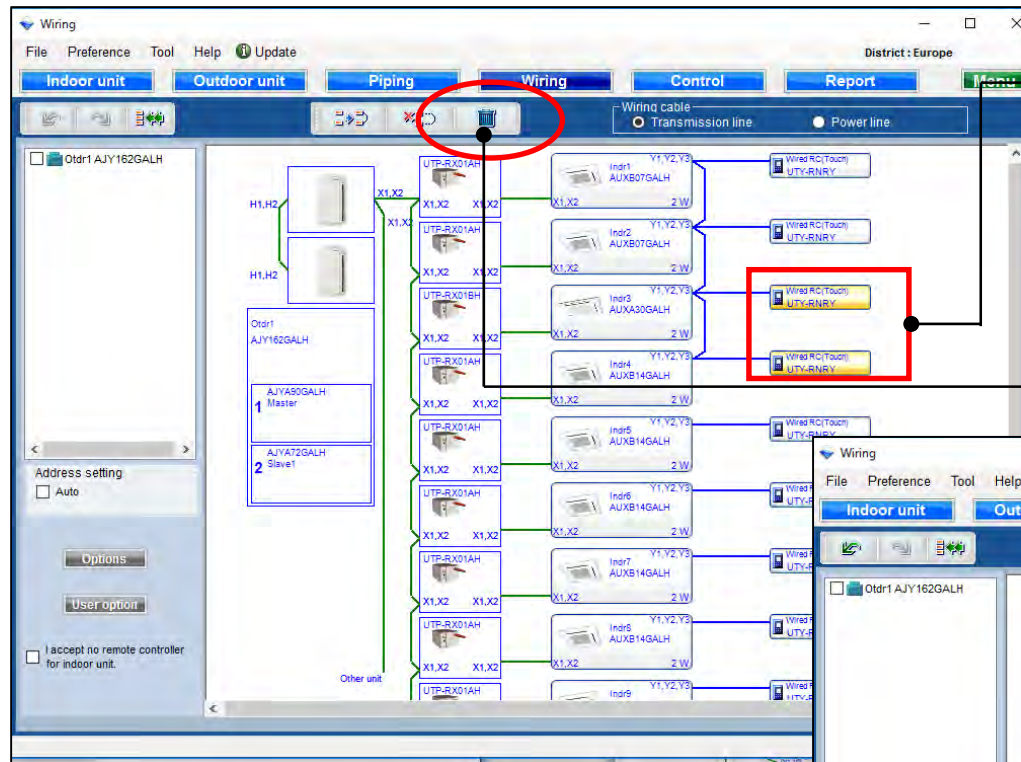
Select "indoor unit"

Check box



The checked refrigerant systems cannot be edited

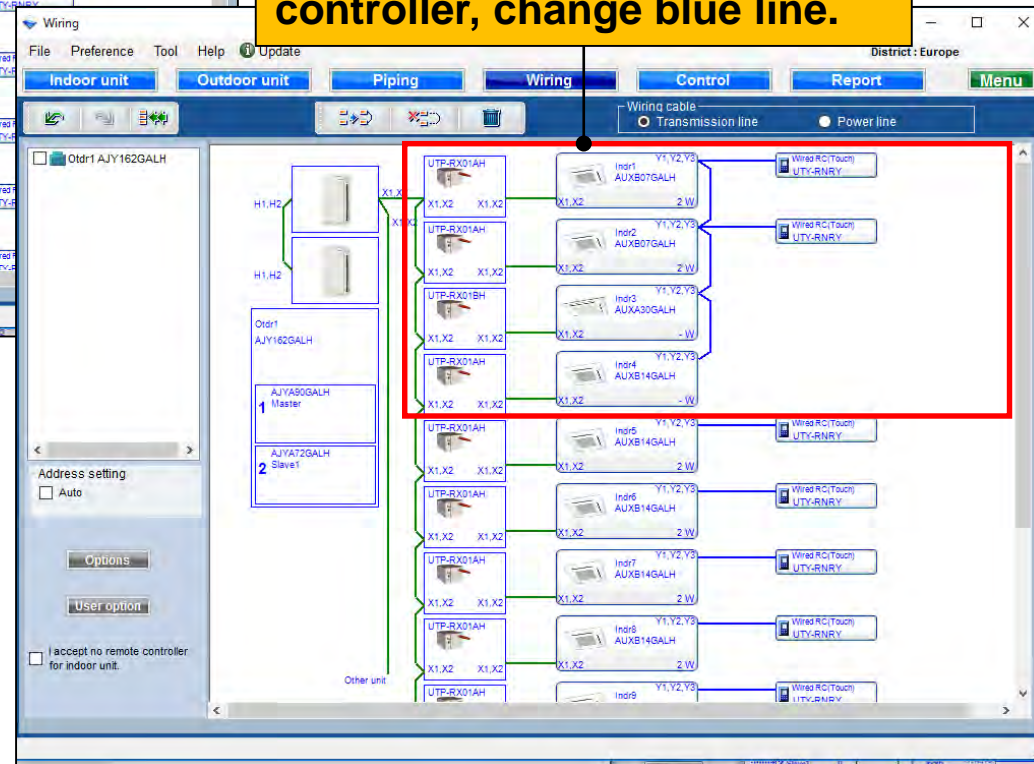
Delete



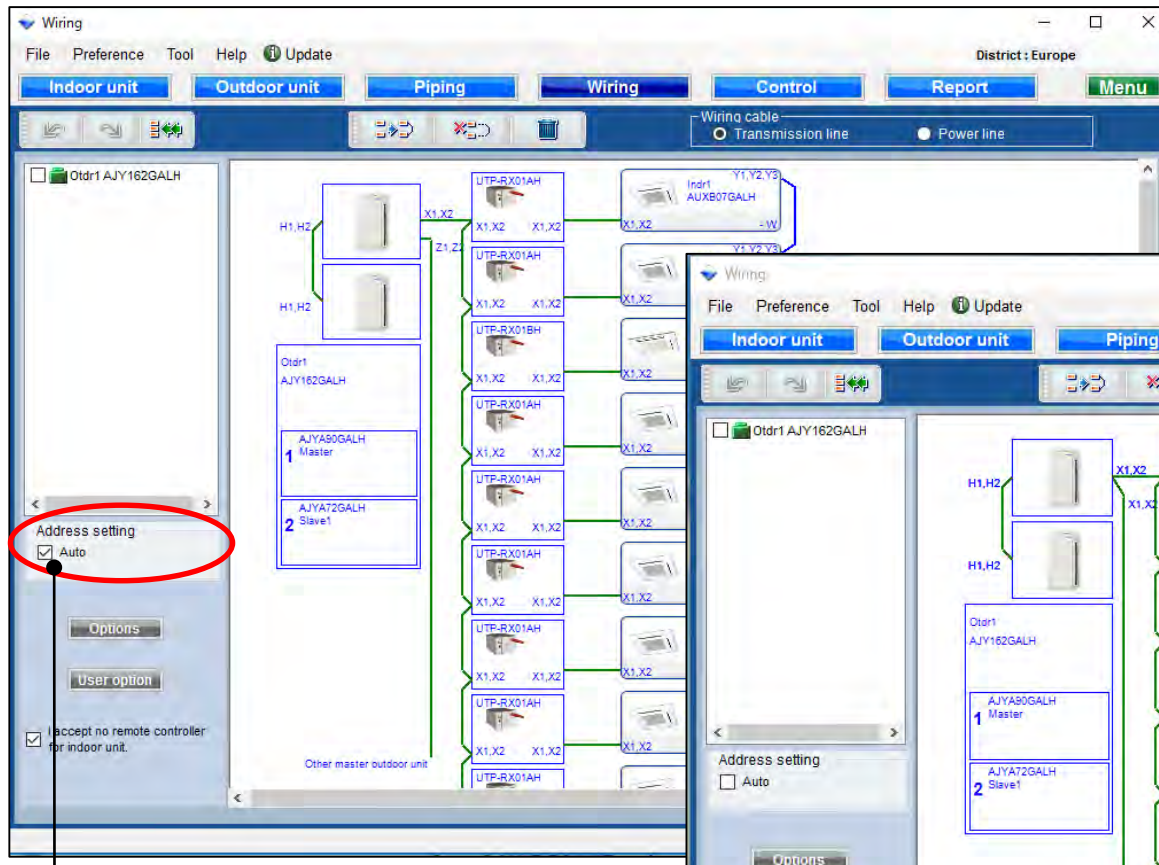
Select remote controller

Select "Delete remote controller"

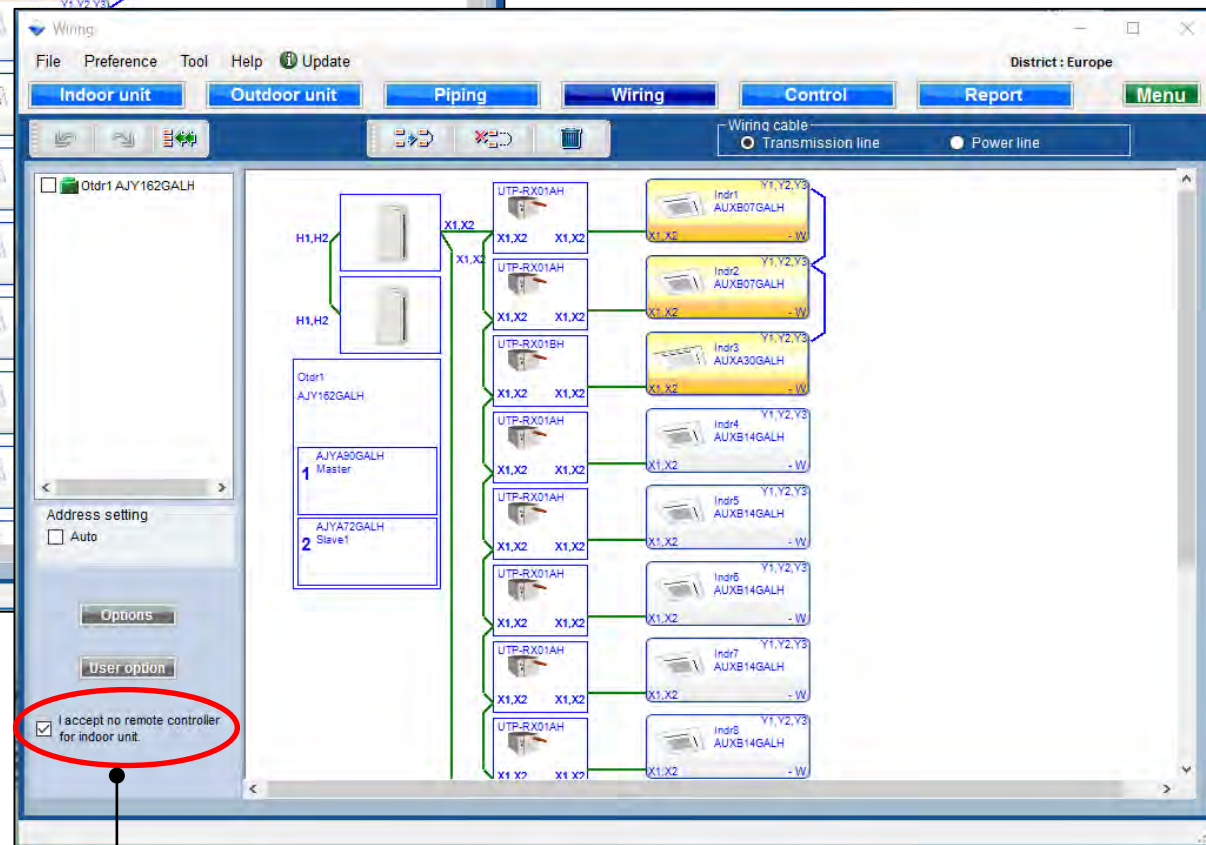
Automatically delete remote controller, change blue line.



Address setting



Check if “Auto Address” is used

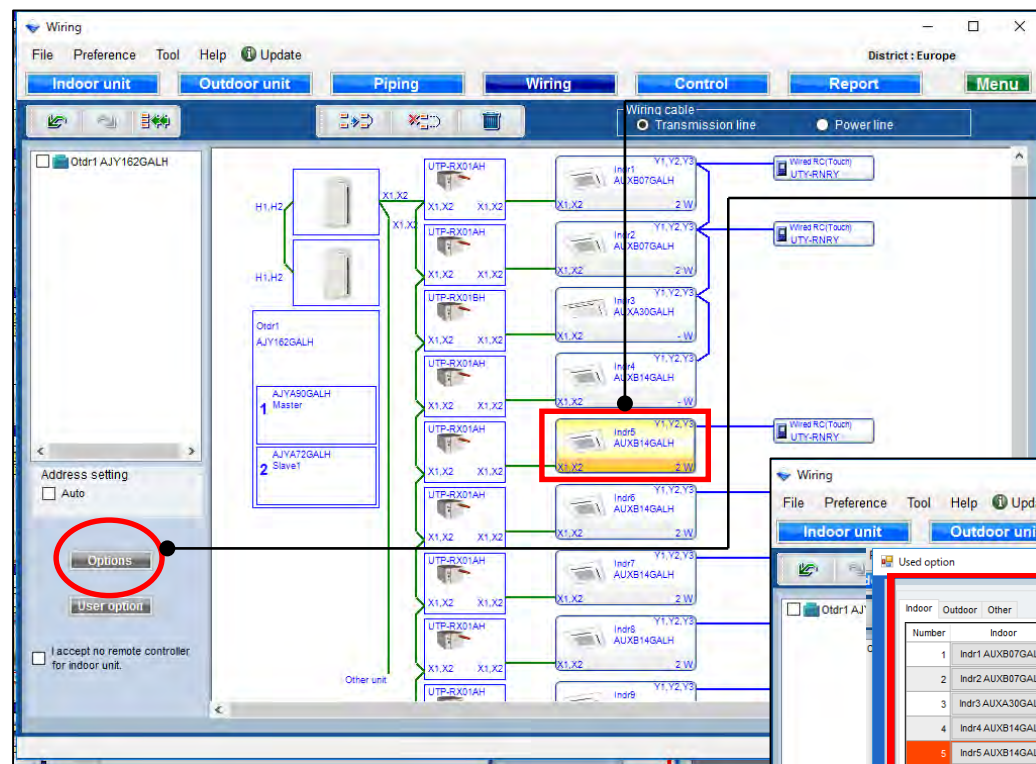


Check if “Remote controller” is unnecessary

Wiring settings

Design Simulator

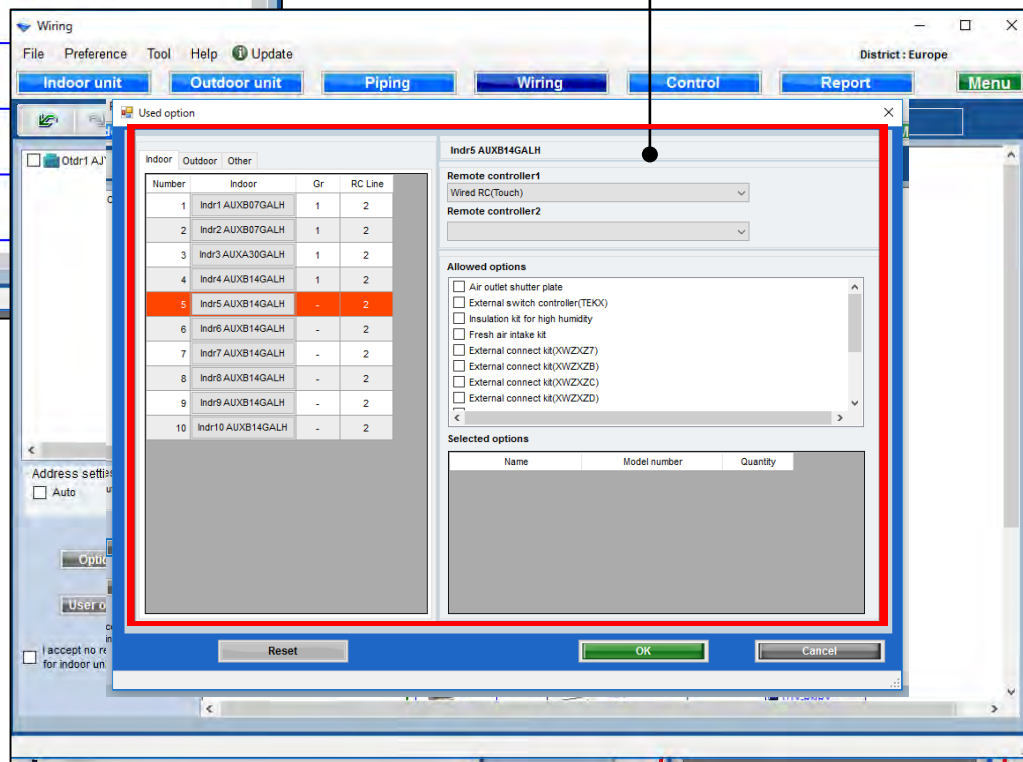
option



Select indoor unit

Select "Options"

Open used option screen.



Used option

Wiring

File Edit View Help

Used option

Indoor Outdoor Other

Number	Indoor	Gr	RC Line
1	Indr1 AUXB07GALH	1	2
2	Indr2 AUXB07GALH	1	2
3	Indr3 AUXA30GALH	1	2
4	Indr4 AUXB14GALH	1	2
5	Indr5 AUXB14GALH	-	2
6	Indr6 AUXB14GALH	-	2
7	Indr7 AUXB14GALH	-	2
8	Indr8 AUXB14GALH	-	2
9	Indr9 AUXB14GALH	-	2
10	Indr10 AUXB14GALH	-	2

Indr5 AUXB14GALH

Remote controller1
Wired RC(Touch)

Remote controller2
Simple RC 2-Wire(With operation mode)

Allowed options

- ☒ Air outlet shutter plate
- ☐ External switch controller(TEKO)
- ☒ Insulation kit for high humidity
- ☒ Fresh air intake kit
- ☐ External connect kit(XWZXZ7)
- ☐ External connect kit(XWZXZB)
- ☐ External connect kit(XWZXZC)
- ☐ External connect kit(XWZXZD)

Selected options

Name	Model number	Quantity
Air outlet shutter plate	UTR-YDZB	1
Insulation kit for high humidity	UTZ-KXGC	1
Fresh air intake kit	UTZ-VXAA	1

Reset OK Cancel

Select remote controller
Two wires and three wires
cannot be mixed
An error occurs if these are
mixed

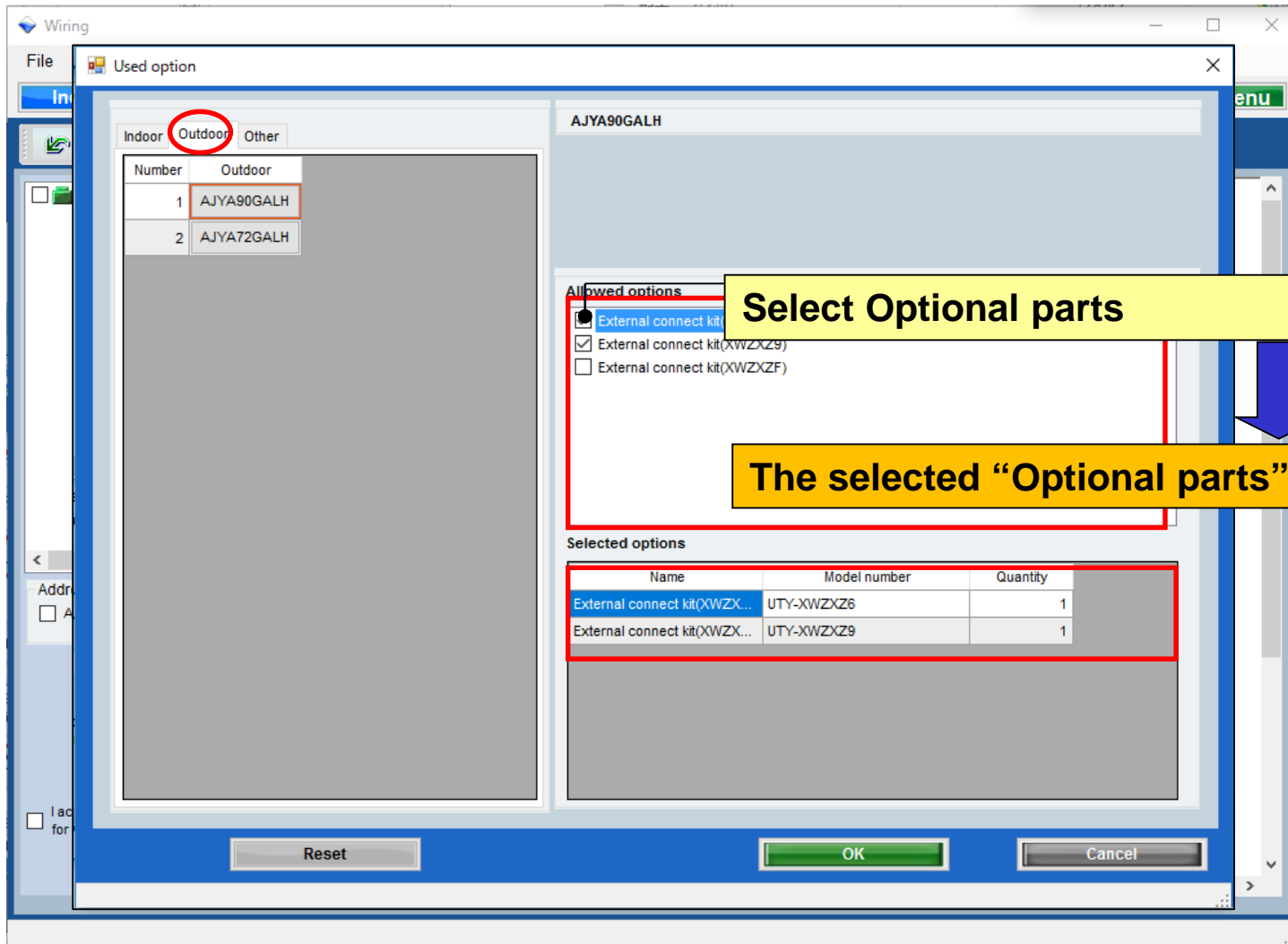
Select Optional parts

Input quantity

Press "Reset" to
return to default

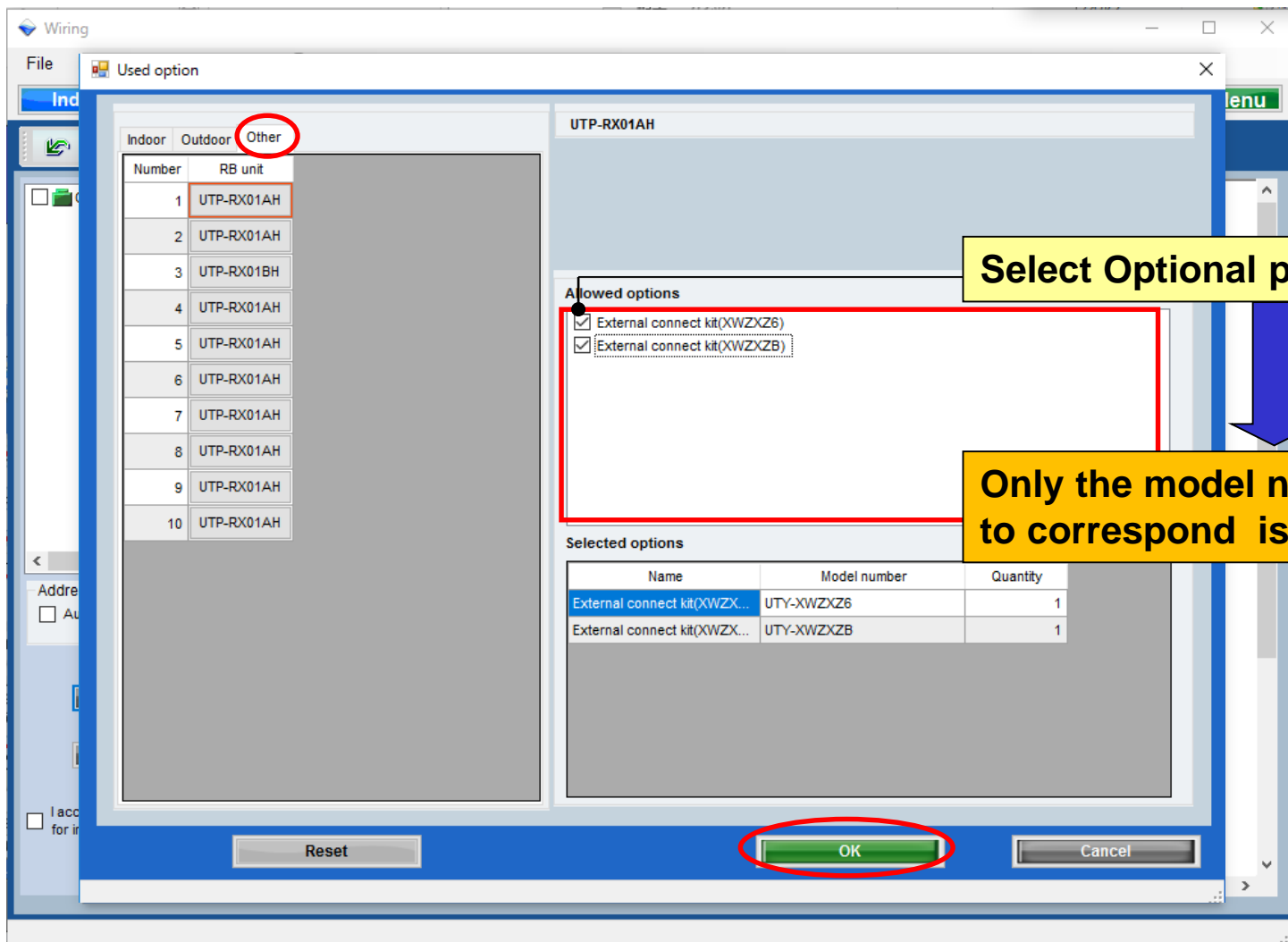
The selected options are displayed in "Report"

Used option



The selected options are displayed in "Report"

Used option

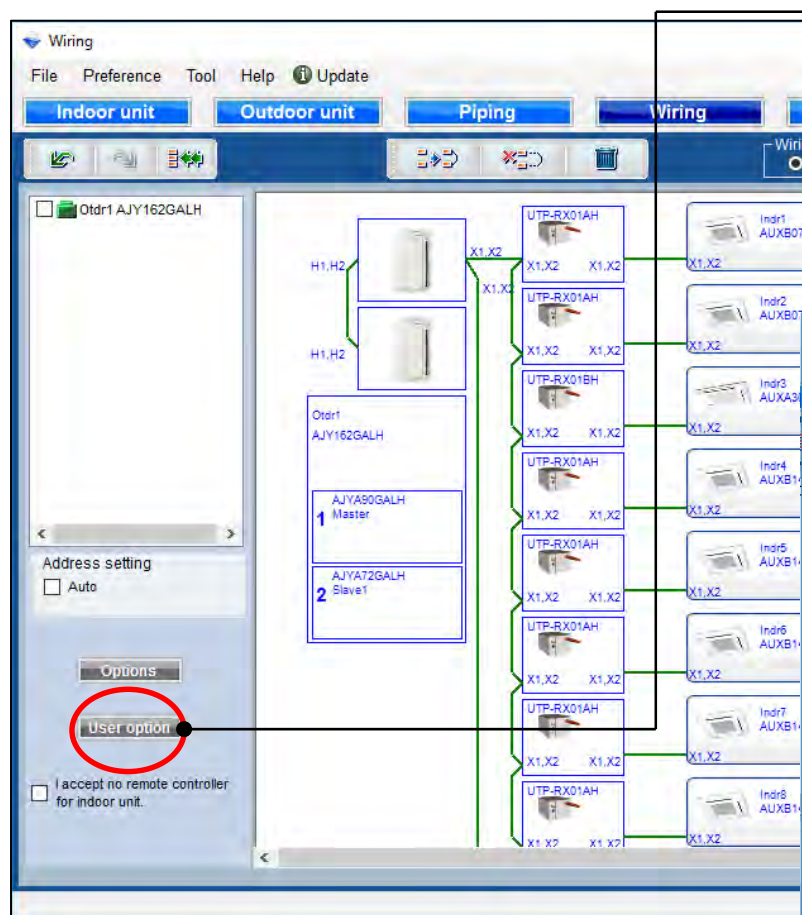


Select Optional parts

Only the model name of option to correspond is displayed .

The selected options are displayed in "Report"

User option



Select "User Options "

Open User options (Refrigerant)

User options(Refrigerant)

Inside classification
A1

Small classification
A11

User option
☒ A112
☒ A113

Selected user options

User Option item	Quantity
A112	1
A113	1
111	1

Each

Device model name	Quantity
AUXA30GALH	1
AUXB07GALH	2
AUXB14GALH	7

OK Cancel

User option(Refrigerant)

The screenshot shows the 'User options(Refrigerant)' dialog box. It contains several sections: 'Inside classification' with dropdowns for 'A1' and 'A11'; 'Small classification' with a dropdown for 'A11'; 'User option' with checkboxes for 'A112' and 'A113'; and 'Selected user options' with a table. A red box highlights the 'Inside classification', 'Small classification', and 'User option' sections. A blue box highlights the 'Each' button. A yellow box highlights the 'OK' button. A blue arrow points from the 'Each' button to the 'Selected user options' table. A yellow box points to the 'Each' button with the text 'Select "Each or Summary"'. A yellow box points to the 'Inside classification' dropdown with the text 'Select "Inside classification"'. A yellow box points to the 'Small classification' dropdown with the text 'Select "Small classification"'. A yellow box points to the 'User option' checkboxes with the text 'Check "User option"'. A yellow box points to the 'Selected user options' table with the text 'Check "User option"'. A yellow box at the bottom points to the 'OK' button with the text 'The selected options are displayed in "Report"'. A blue arrow points from the 'Each' button to the 'Selected user options' table.

User options(Refrigerant)

Inside classification
A1
Small classification
A11

User option
☒ A112
☒ A113

Selected user options

User Option item	Quantity
A112	1
A113	1

Each

Device model name

AUXA30GALH	
AUXB07GALH	2
AUXB14GALH	7

OK Cancel

Select "Each or Summary"

The displayed content changes

Select "Inside classification"

Select "Small classification"

Check "User option"

Check "User option"

The selected options are displayed in "Report"