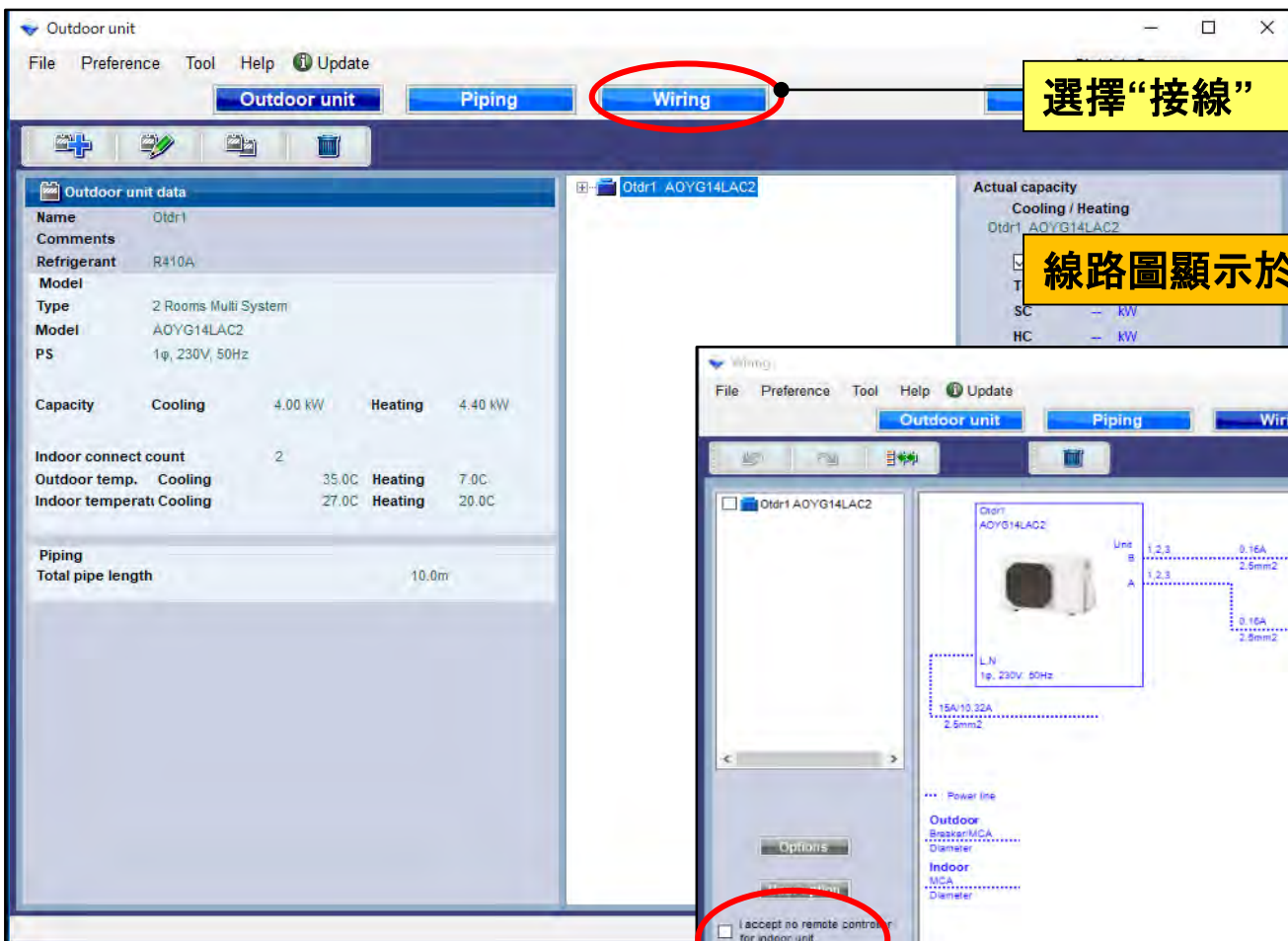


接線設定

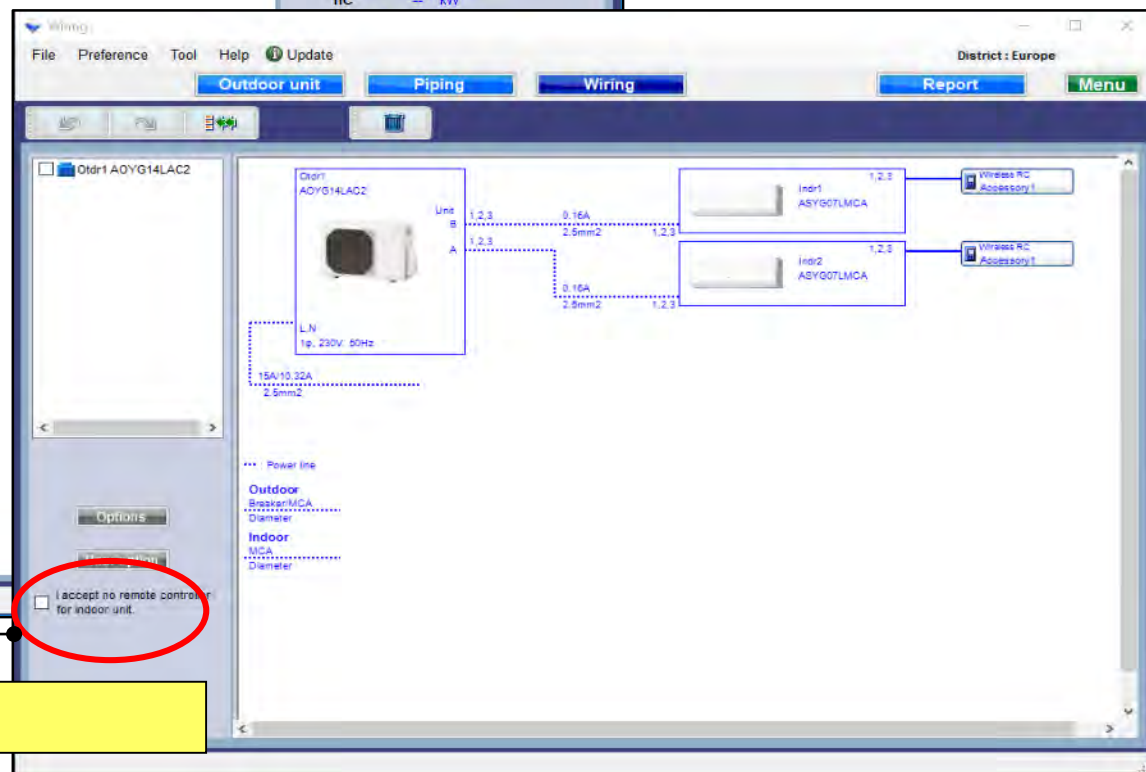
選機軟體

接線(多聯系統)



選擇“接線”

線路圖顯示於螢幕上

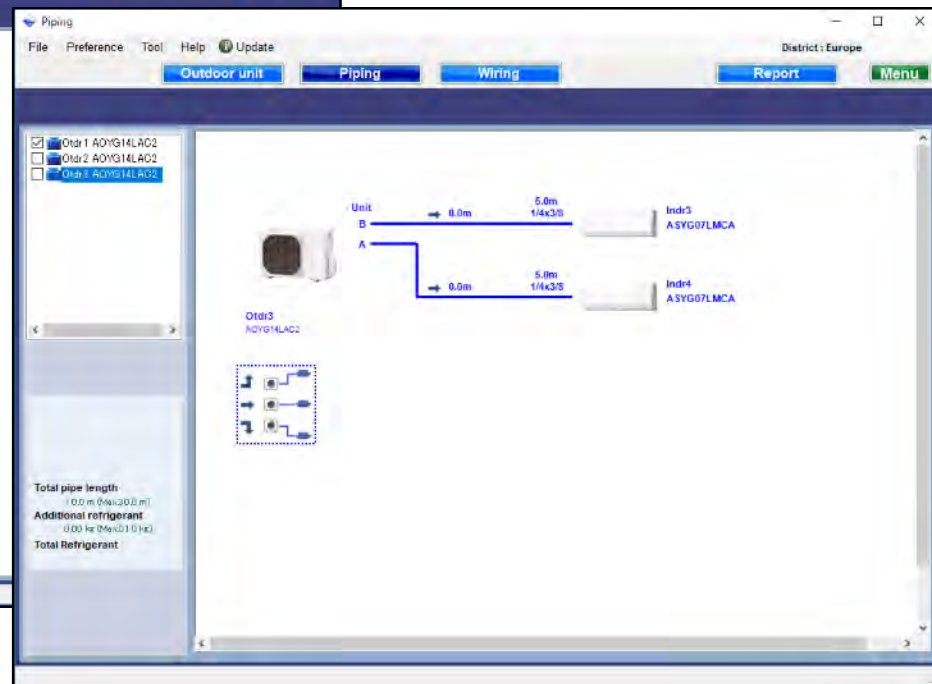
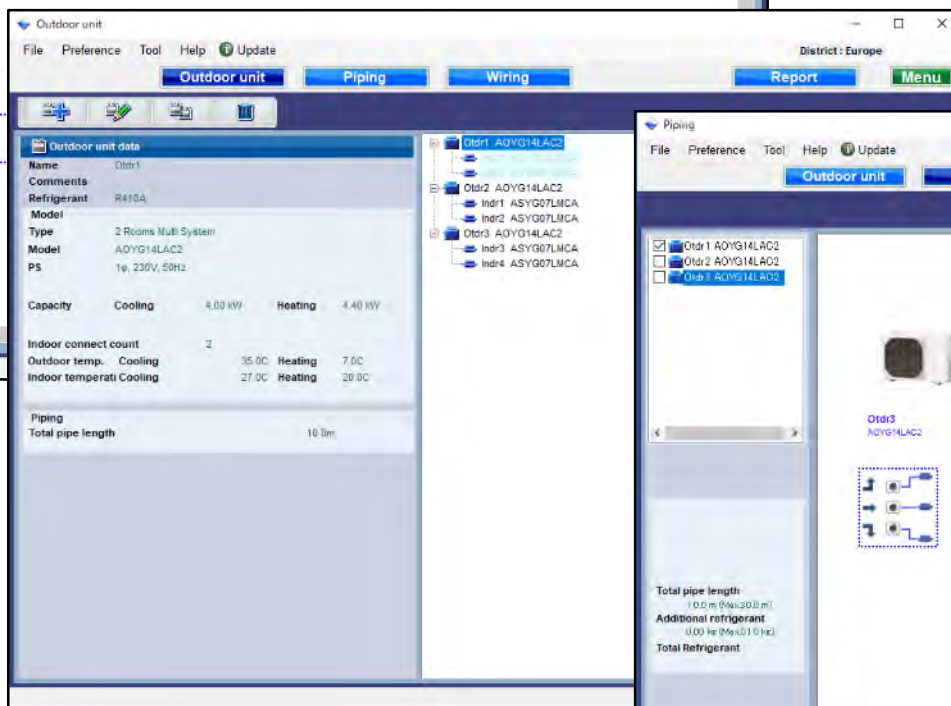
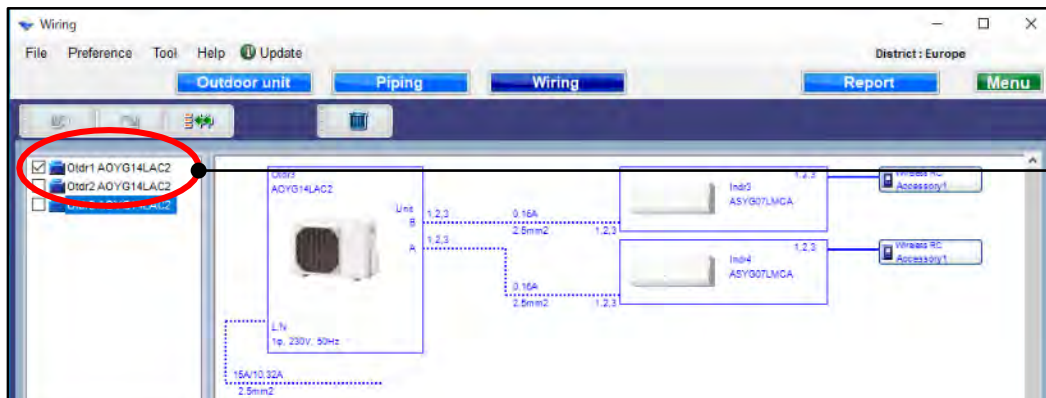
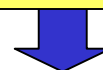


遙控器未連接時，選此復選框

冷媒系統判斷(多聯系統)

點選冷媒系統

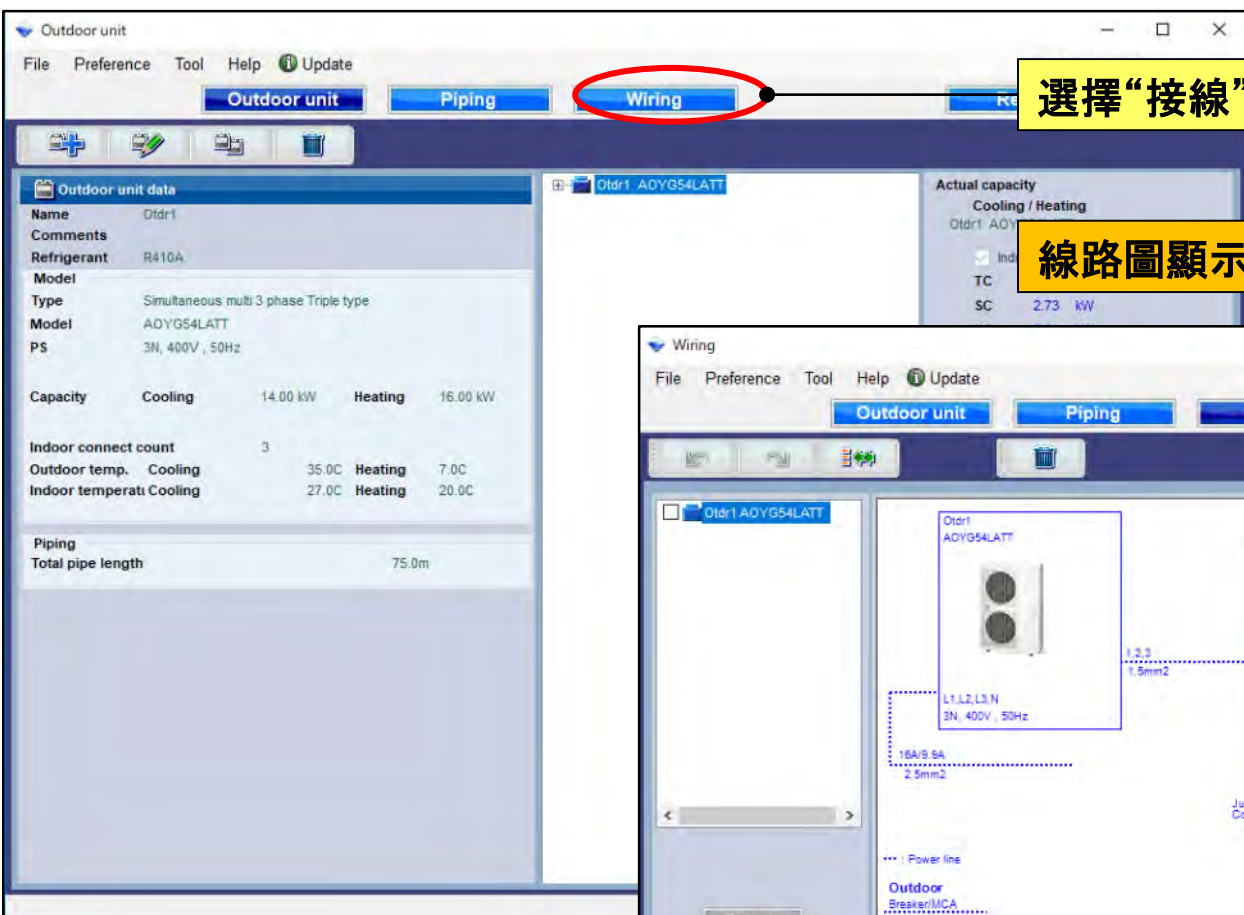
點選冷媒系統
在這個視窗不能被編輯



接線設定

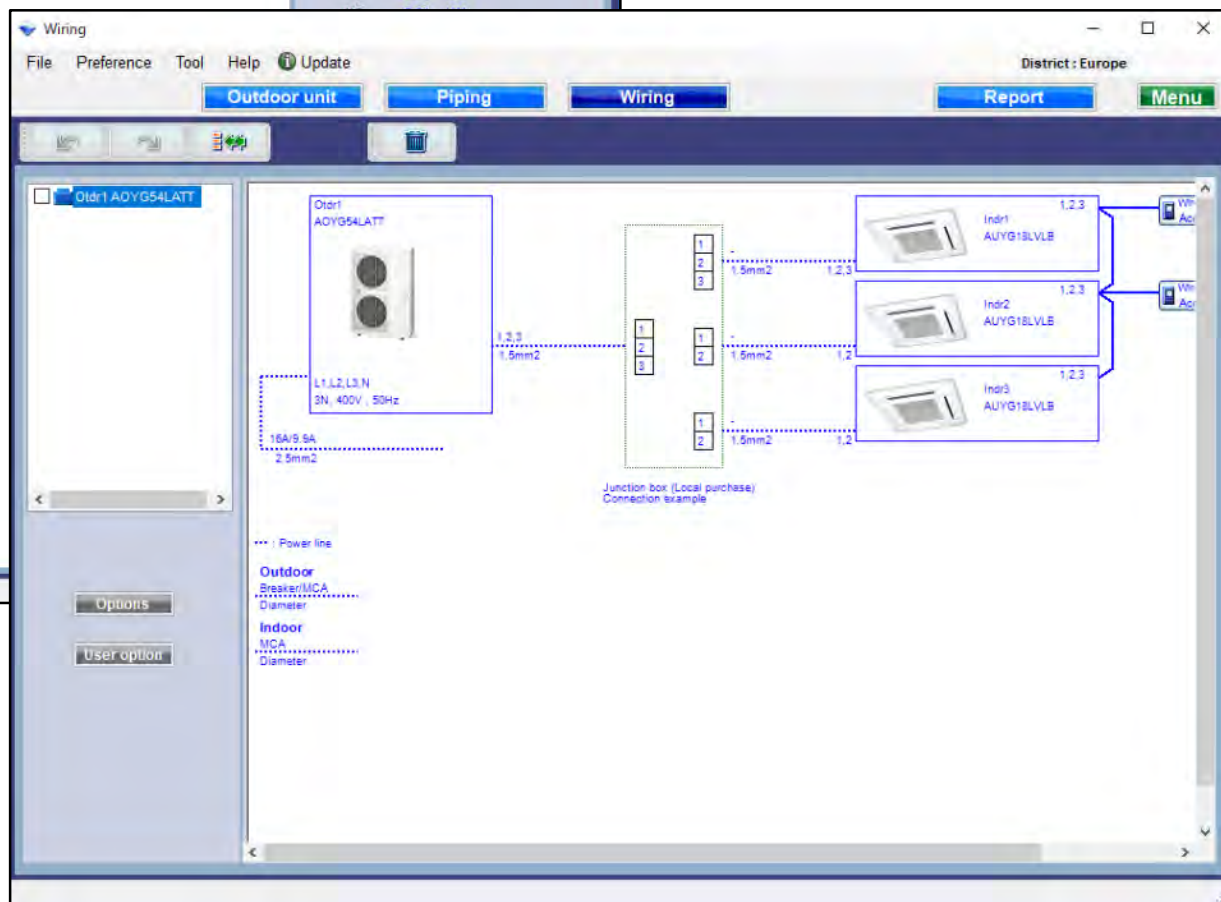
選機軟體

接線(多組-多聯系統)



選擇“接線”

線路圖顯示於螢幕上



使用選項

選擇“設定”

打開使用者設定視窗

Used option

Indoor Outdoor Other

Number	Indoor	Gr	RC Line
1	Indr1 ASYG07LMCA	-	0
2	Indr2 ASYG07LMCA	-	0

Indr1 ASYG07LMCA

Remote controller1
Wireless RC(Accessory)

Remote controller2

Allowed options

- ☐ External connect kit
- ☐ Communication kit
- ☐ Wire with connector
- ☐ KNX Interface
- ☐ MODBUS Interface

Selected options

Name	Model number	Quantity
------	--------------	----------

Reset OK Cancel

使用選項(1/2)

Used option

Indoor Outdoor Other

Number	Indoor	Gr	RC Line
1	Indr1 ASYG07LMCA	-	0
2	Indr2 ASYG07LMCA	-	0

Indr1 ASYG07LMCA

Remote controller1
Wireless RC(Accessory)

Remote controller2

Allowed options

- ☐ External connect kit
- ☐ Communication kit
- ☐ Wire with connector
- ☐ KNX Interface
- ☒ MODBUS Interface

Selected options

Name	Model number	Quantity
MODBUS Interface	FJ-RC-MBS-1	1

Reset OK Cancel

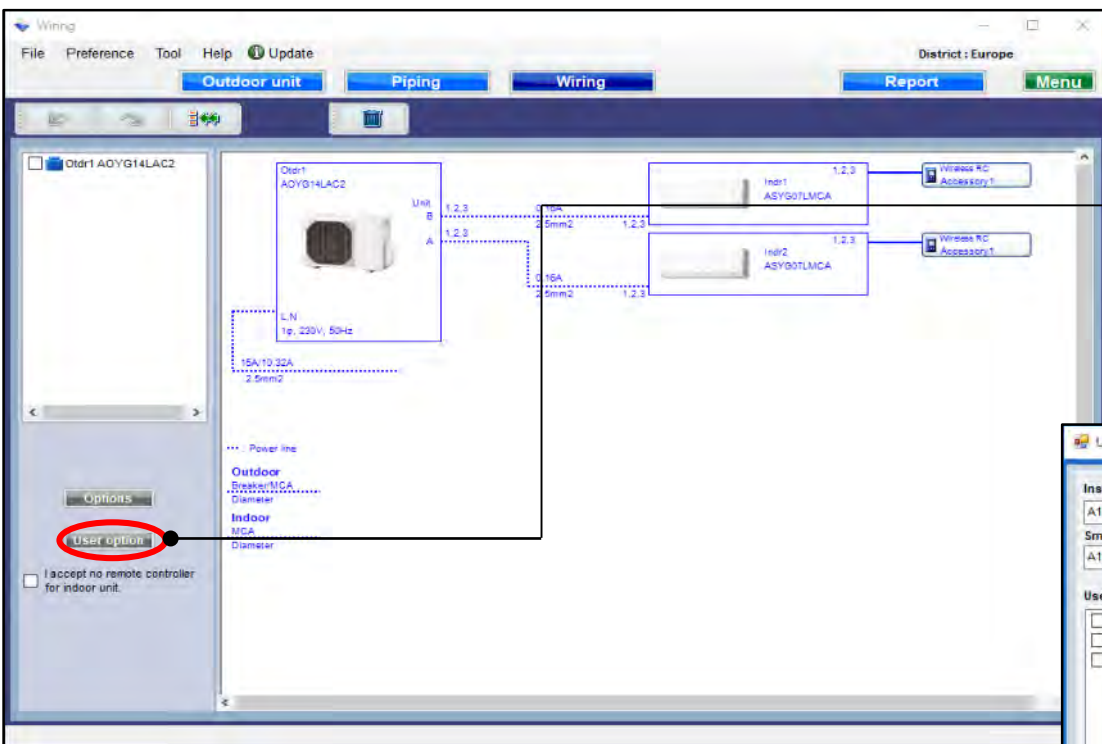
選擇遙控控制

選擇選配品

只顯示選項對應的型號名稱。

報告中顯示選定的選項

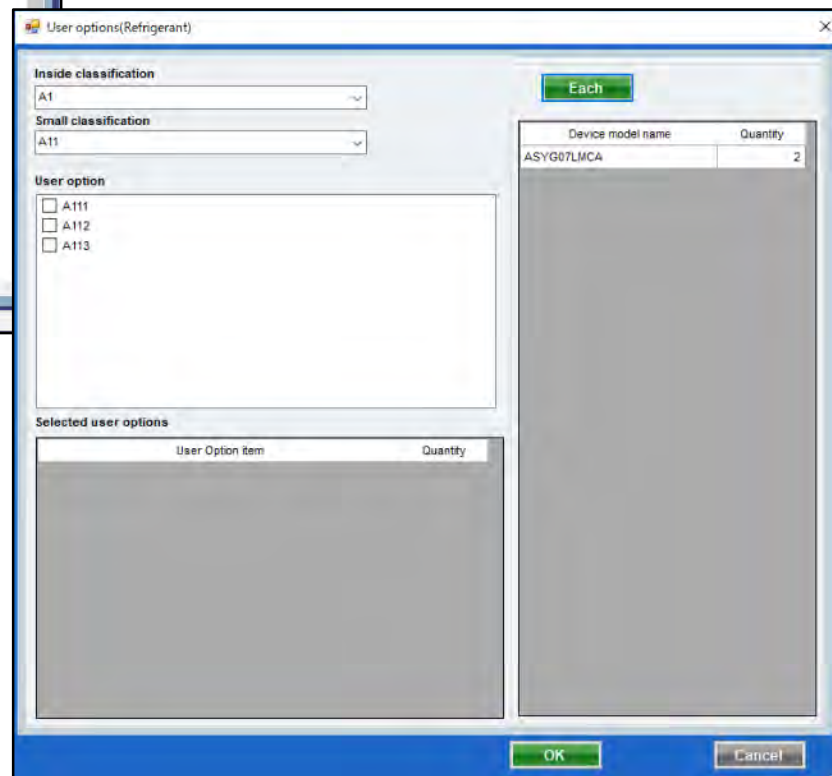
使用選項(2/2)



選擇“使用者設定”



打開使用者設定(冷媒)



使用者選項(冷媒)

The screenshot shows the 'User options(Refrigerant)' dialog box. It contains several sections: 'Inside classification' with a dropdown menu set to 'A1'; 'Small classification' with a dropdown menu set to 'A11'; 'User option' with a list of checkboxes where 'A111' and 'A112' are checked and 'A113' is unchecked; and 'Selected user options' with a table showing 'A111' and 'A112' each with a quantity of 1. A table on the right shows 'Device model name' as 'ASYG07LMCA' and 'Quantity' as '2'. The 'Each' button is at the top right. The 'OK' button at the bottom is circled in red. Yellow callout boxes with arrows point to the 'Each' button, the 'Inside classification' dropdown, the 'User option' list, and the 'Selected user options' table.

User options(Refrigerant)

Inside classification
A1

Small classification
A11

User option
☒ A111
☒ A112
☐ A113

Selected user options

User Option item	Quantity
A111	1
A112	1

Each

Device model name	Quantity
ASYG07LMCA	2

OK Cancel

選擇“每個或摘要”

選擇“內部分類”

選擇“小分類”

點選“使用者選項”

點選“使用者選項”

報告中顯示選定的選項