

Kablolama (Multi sistemi)

Outdoor unit

File Preference Tool Help Update

Outdoor unit Piping **Wiring**

Outdoor unit data

Name Otdr1

Comments

Refrigerant R410A

Model

Type 2 Rooms Multi System

Model AOYG14LAC2

PS 1φ, 230V, 50Hz

Capacity Cooling 4.00 kW Heating 4.40 kW

Indoor connect count 2

Outdoor temp. Cooling 35.0C Heating 7.0C

Indoor temperature Cooling 27.0C Heating 20.0C

Piping

Total pipe length 10.0m

Options

☐ I accept no remote control for indoor unit.

“Kablolama” seç

Kablo sistem diyagramı ekranıdır

Wiring

File Preference Tool Help Update

Outdoor unit Piping Wiring Report Menu

Outdoor unit data

Name Otdr1

Comments

Refrigerant R410A

Model

Type 2 Rooms Multi System

Model AOYG14LAC2

PS 1φ, 230V, 50Hz

Capacity Cooling 4.00 kW Heating 4.40 kW

Indoor connect count 2

Outdoor temp. Cooling 35.0C Heating 7.0C

Indoor temperature Cooling 27.0C Heating 20.0C

Piping

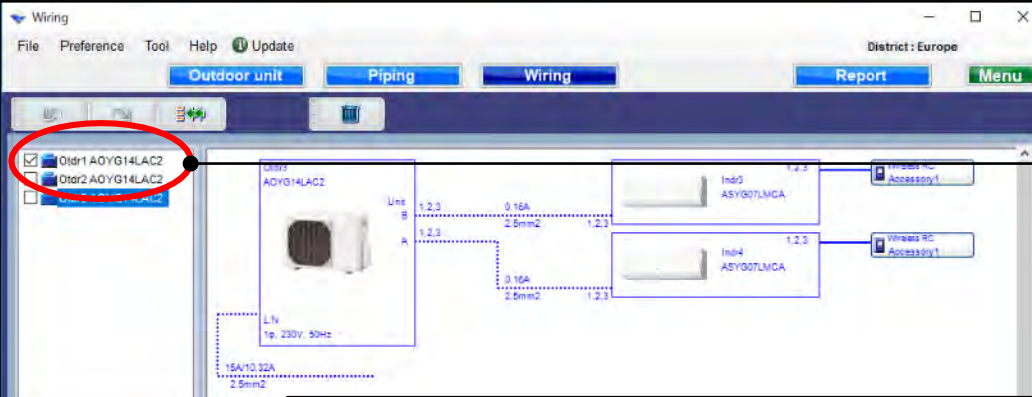
Total pipe length 10.0m

Options

☐ I accept no remote control for indoor unit.

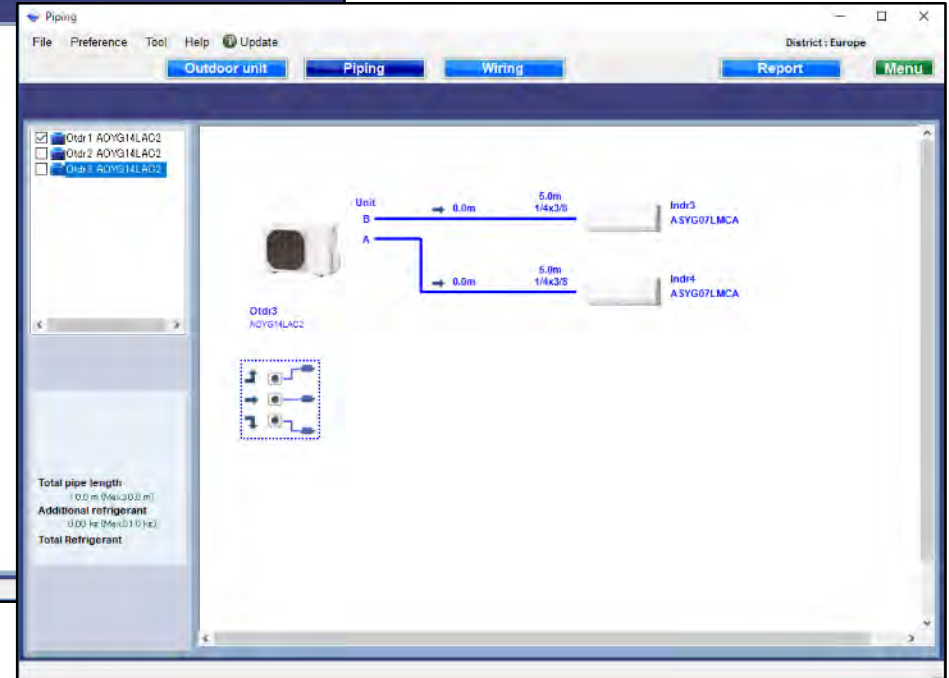
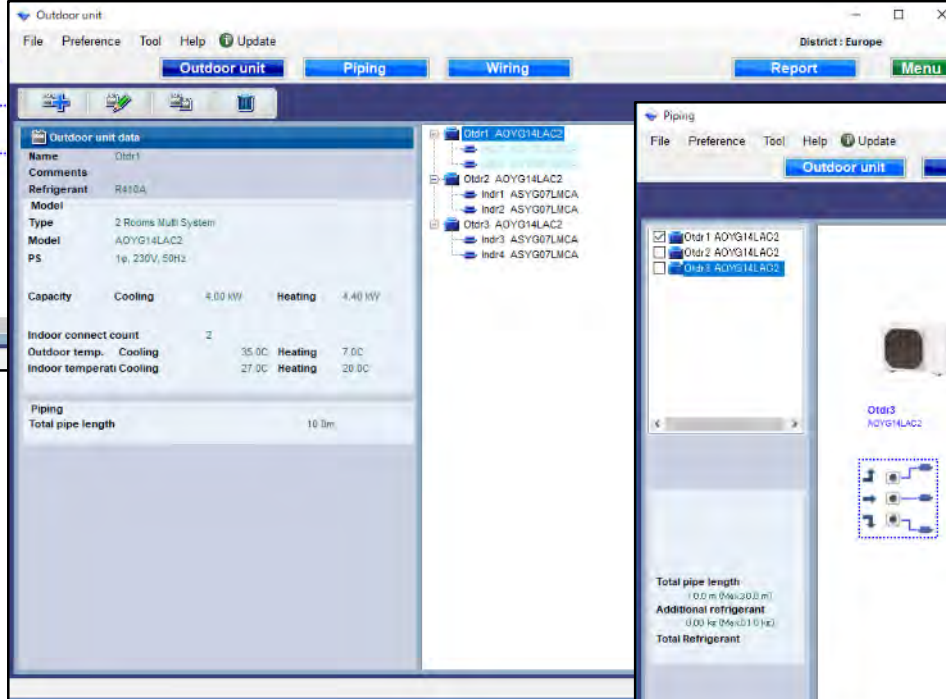
Wiring diagram showing outdoor unit (Otdr1 AOYG14LAC2) connected to two indoor units (Indr1 and Indr2 ASYG07LMCA) via power lines (L, N, PE) and communication lines (A, B). The diagram also shows the power line (L, N, PE) and the communication lines (A, B) connecting the outdoor unit to the indoor units.

Soğutucu sistem kararı (Çok sistemi)

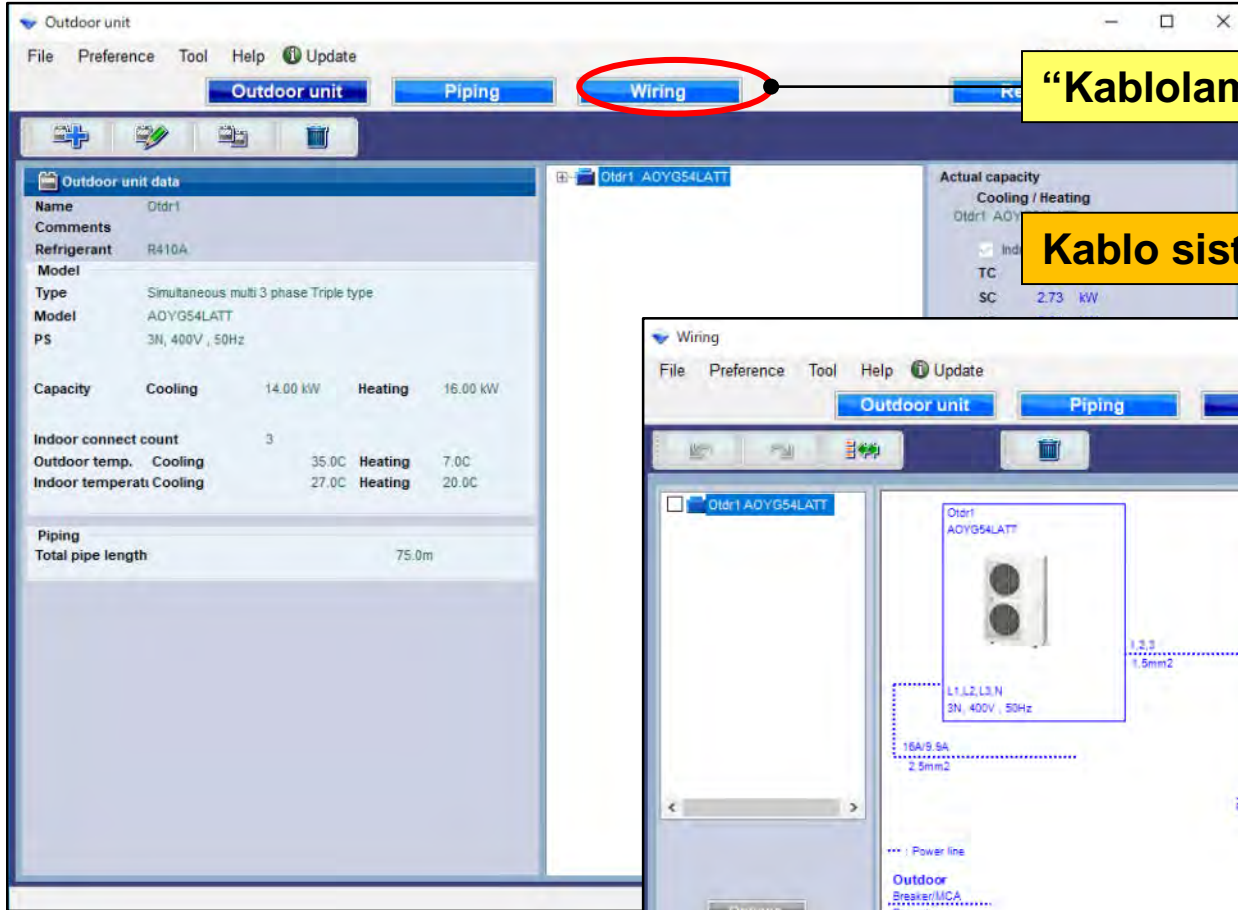


Soğutucu sistemini kontrol edin

Kontrol edilen soğutucu akışkan sistemi her ekranda düzenlenemez

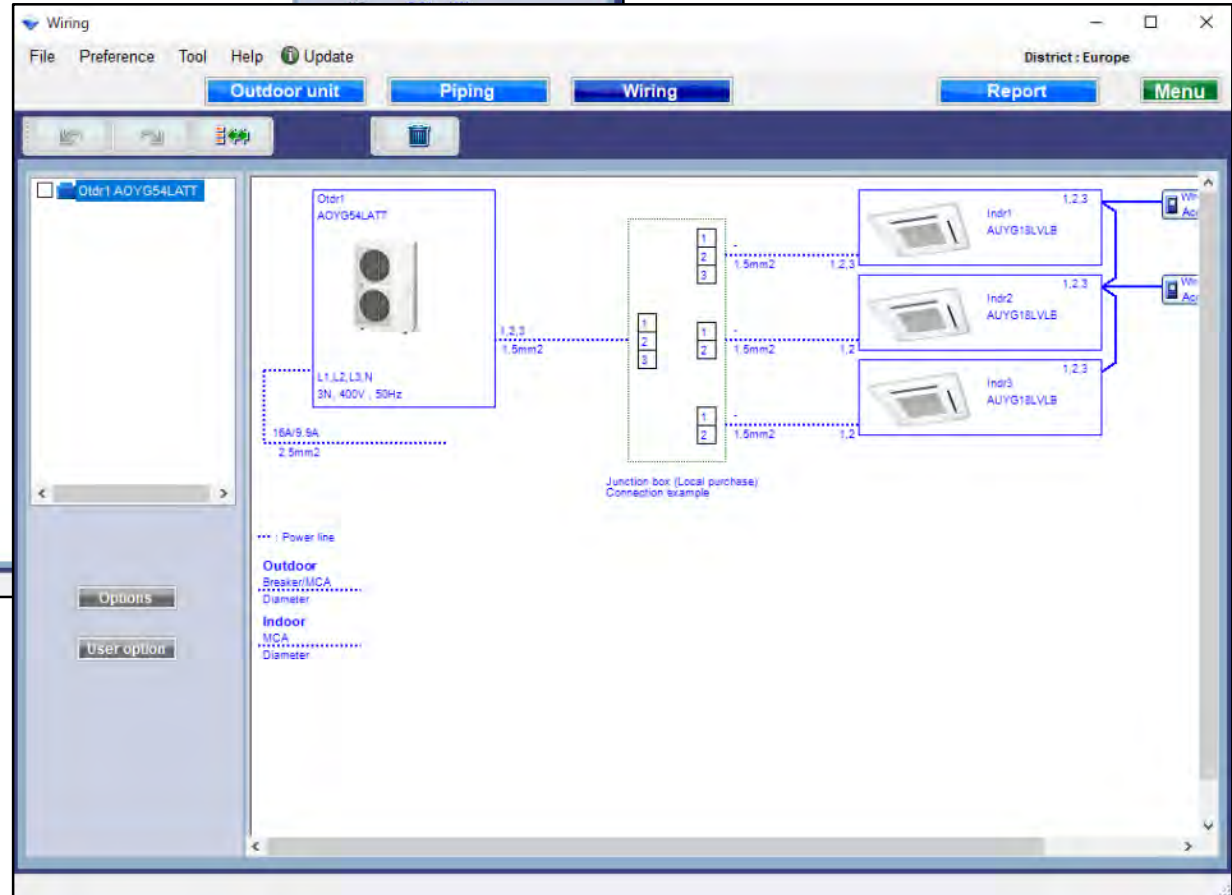


kablolama (Eşzamanlı çoklu sistem)



“Kablolama” seç

Kablo sistem diyagramı ekranıdır.



Seçenekler

“Seçenekler” i seçin

Kullanılan seçenek ekranını aç

Used option

Indoor Outdoor Other

Number	Indoor	Gr	RC Line
1	Indr1 ASYG07LMCA	-	0
2	Indr2 ASYG07LMCA	-	0

Indr1 ASYG07LMCA

Remote controller1
Wireless RC(Accessory)

Remote controller2

Allowed options

- ☐ External connect kit
- ☐ Communication kit
- ☐ Wire with connector
- ☐ KNX Interface
- ☐ MODBUS interface

Selected options

Name	Model number	Quantity
------	--------------	----------

Reset OK Cancel

kullanımda seçeneği (1/2)

Used option

Indoor Outdoor Other

Number	Indoor	Gr	RC Line
1	Indr1 ASYG07LMCA	-	0
2	Indr2 ASYG07LMCA	-	0

Indr1 ASYG07LMCA

Remote controller1
Wireless RC(Accessory)

Remote controller2

Allowed options

- ☐ External connect kit
- ☐ Communication kit
- ☐ Wire with connector
- ☐ KNX Interface
- ☒ MODBUS Interface

Selected options

Name	Model number	Quantity
MODBUS Interface	FJ-RC-MBS-1	1

Reset OK Cancel

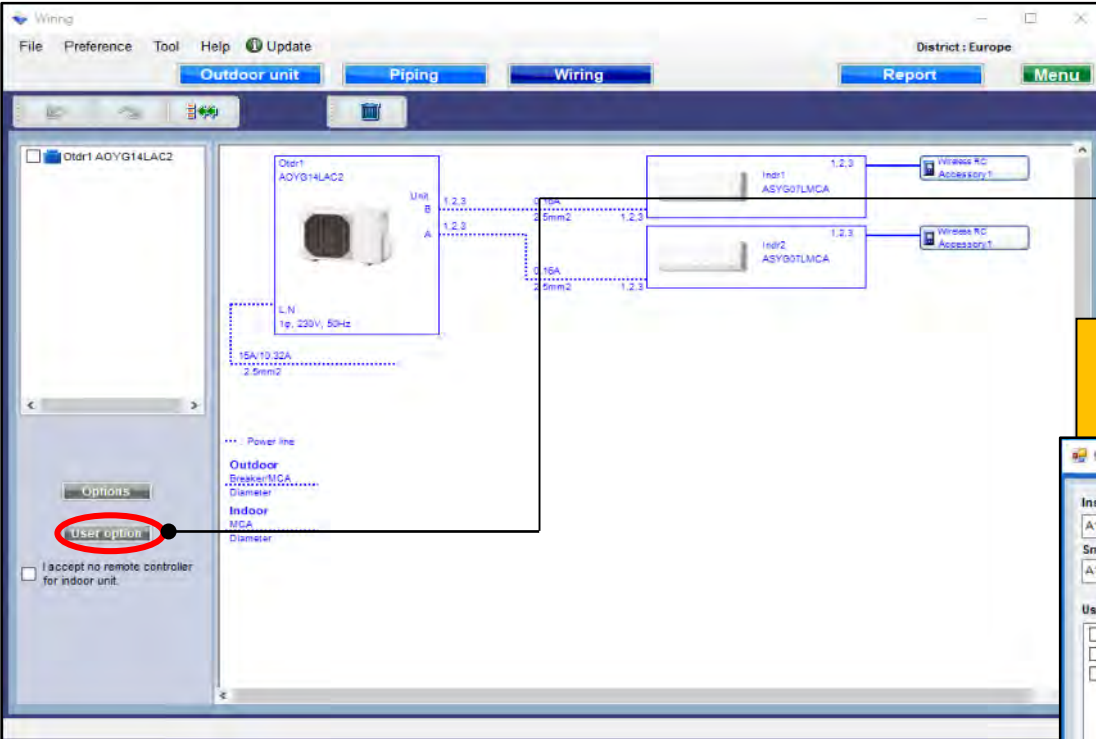
Uzaktan kumandayı seçin

Opsiyonel parçalar seçin

Yalnızca karşılık gelen seçeneğin model adı görüntülenir.

Seçilen seçenekler Raporda görüntülenir

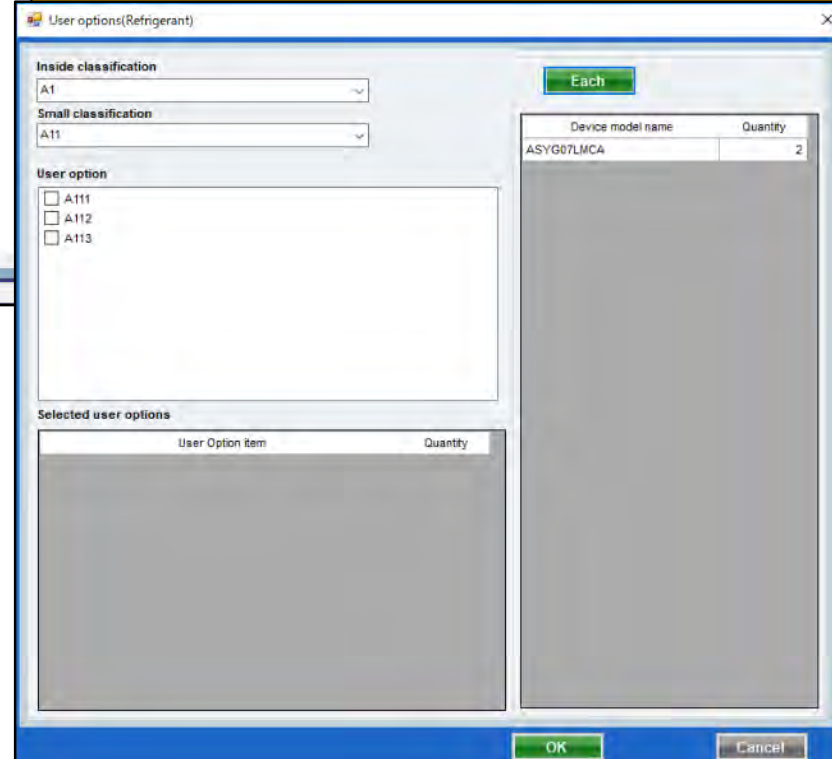
kullanım seçeneği (2/2)



“Kullanıcı Seçenekleri” ni seçin



Kullanıcı seçeneklerini aç (Soğutucu akışkan)



kullanıcı seçene (Soğutucu)

User options(Refrigerant)

Inside classification
A1

Small classification
A11

User option
☒ A111
☒ A112
☐ A113

Selected user options

User Option item	Quantity
A111	1
A112	1

Each

Device model name	Quantity
ASYG07LMCA	2

OK

Cancel

“Her biri veya Özet” i seçin

“İç sınıflandırma” seçin

“Küçük sınıflandırma” Seç

“Kullanıcı” seçeneğini kontrol edin

“Kullanıcı” seçeneğini kontrol edin

Seçilen seçenekler Raporda görüntülenir