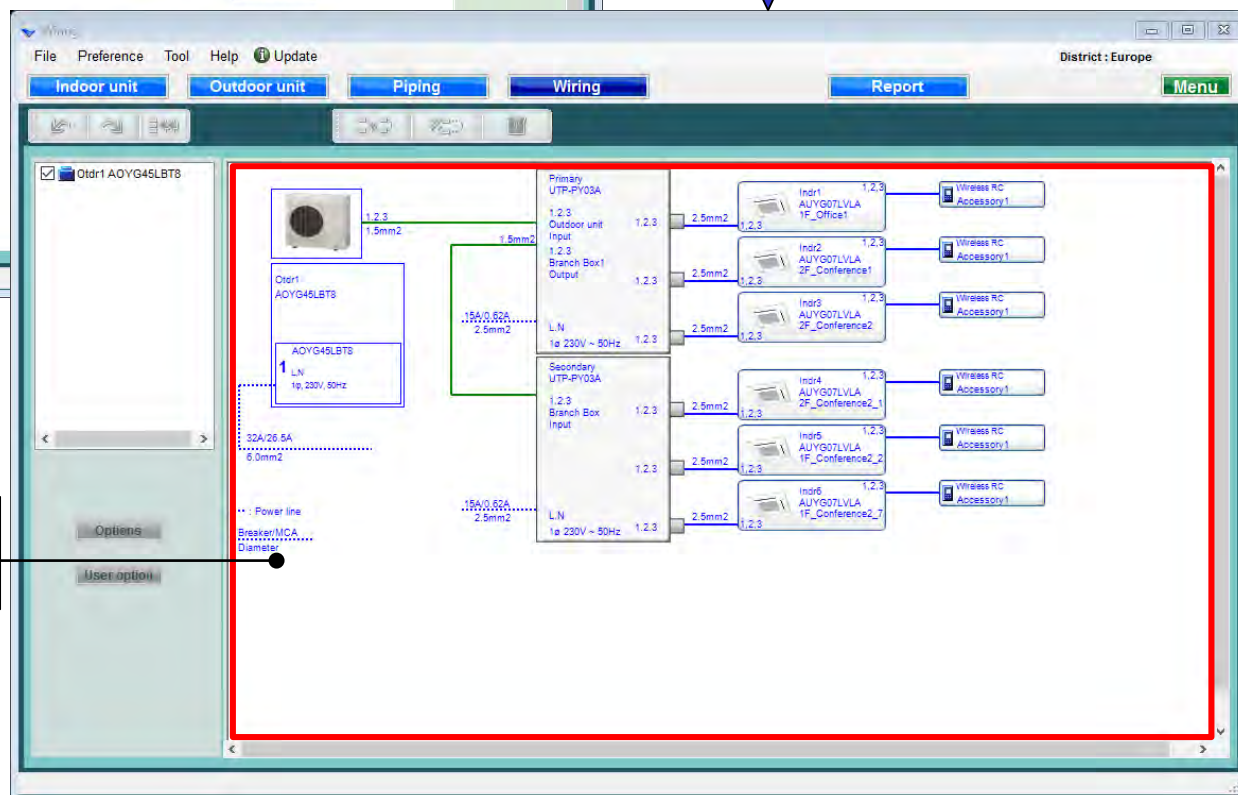


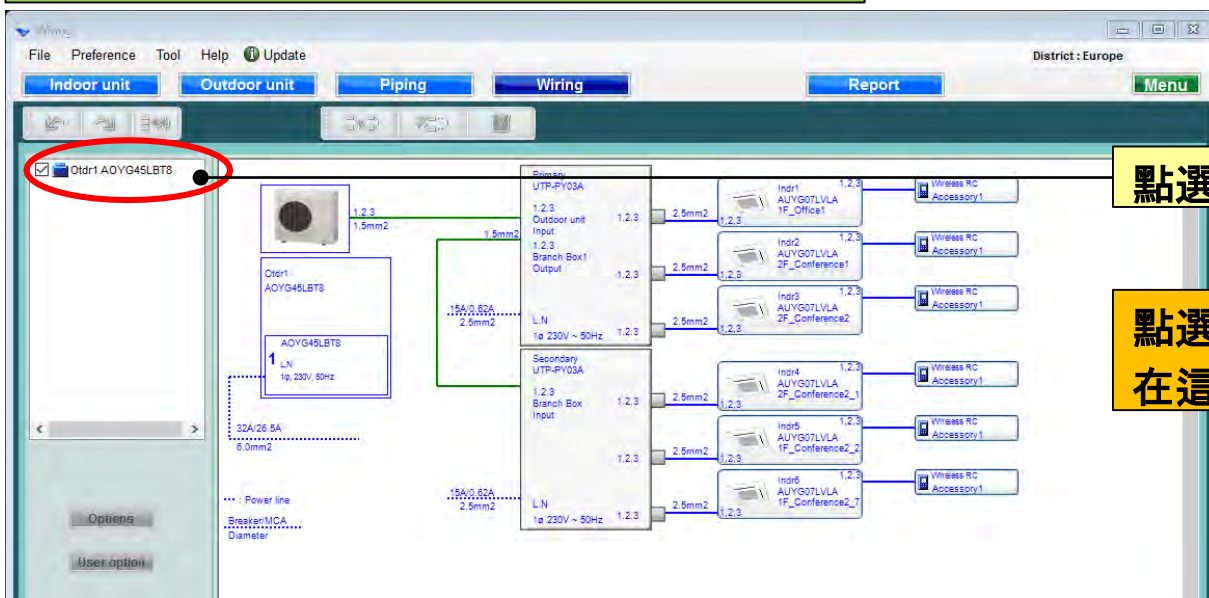
選擇“接線”

接線系統圖創建



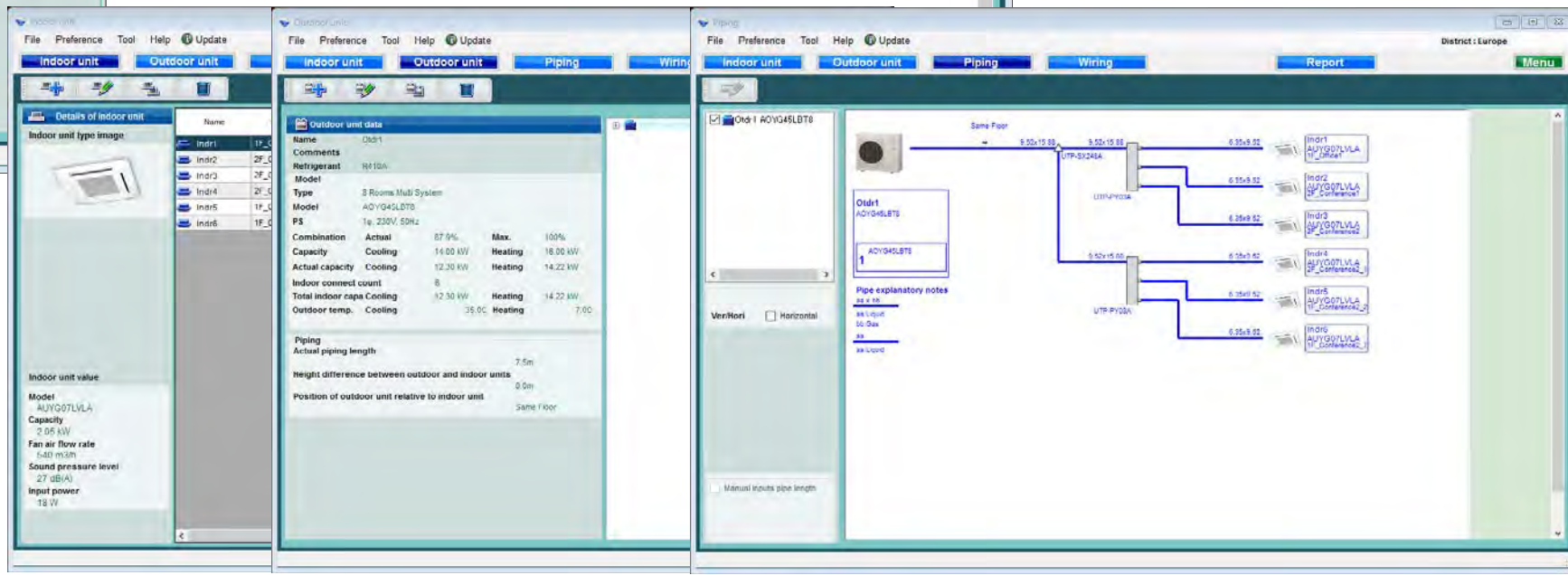
連線信息顯示：每個設備的當前值每個設備的连接端口

冷媒系統判斷



點選冷媒系統

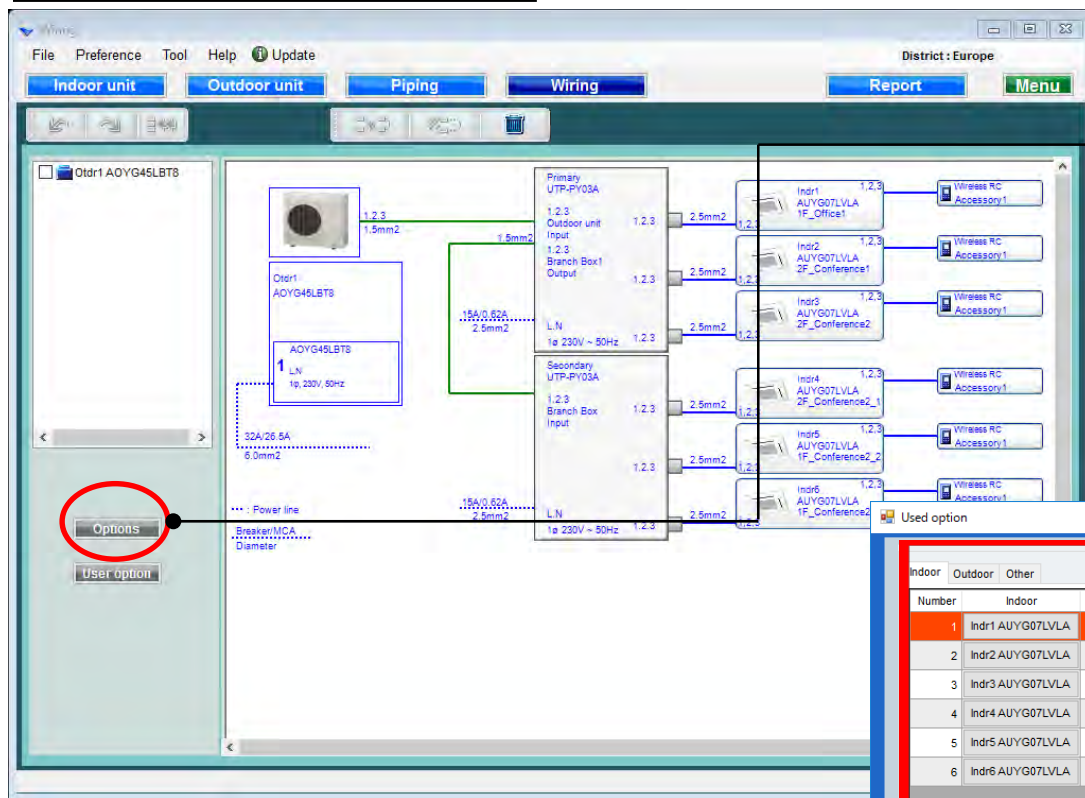
點選冷媒系統
在這個視窗不能被編輯



接線設定

選機軟體

設定



選擇“設定”

打開使用者設定視窗

The 'Used option' dialog box is shown. It has tabs for 'Indoor', 'Outdoor', and 'Other'. The 'Indoor' tab is selected, showing a table of indoor units. The 'Remote controller1' dropdown is set to 'Wireless RC'. The 'Allowed options' section lists various options with checkboxes. The 'Selected options' section is empty.

Number	Indoor	Gr	RC Line
1	Indr1 AUYG07LVLA	-	0
2	Indr2 AUYG07LVLA	-	3
3	Indr3 AUYG07LVLA	-	3
4	Indr4 AUYG07LVLA	-	3
5	Indr5 AUYG07LVLA	-	3
6	Indr6 AUYG07LVLA	-	0

Indr1 AUYG07LVLA

Remote controller1
Wireless RC

Remote controller2

Allowed options

- ☐ Air outlet shutter plate
- ☐ Insulation kit for high humidity
- ☐ Fresh air intake kit
- ☐ External connect kit
- ☐ KNX Interface
- ☐ MODBUS interface
- ☐ Wireless Lan interface(FJ-RC-WIFI-1)
- ☐ Wireless LAN Adapter

Selected options

Name	Model number	Quantity
------	--------------	----------

Reset OK Cancel

使用者設定(1/2)

Used option

Indoor Outdoor Other

Number	Indoor	Gr	RC Line
1	Indr1 AUYG07LVLA	-	3
2	Indr2 AUYG07LVLA	-	3
3	Indr3 AUYG07LVLA	-	3
4	Indr4 AUYG07LVLA	-	3
5	Indr5 AUYG07LVLA	-	3
6	Indr6 AUYG07LVLA	-	0

Indr1 AUYG07LVLA

Remote controller1
Simple RC

Remote controller2
Wired RC

選擇遙控器

選擇選配品

Allowed options

- ☒ Air outlet shutter plate
- ☒ Insulation kit for high humidity
- ☐ Fresh air intake kit
- ☐ External connect kit
- ☐ KNX Interface
- ☐ MODBUS Interface
- ☐ Wireless Lan Interface(FJ-RC-WIFI-1)
- ☐ Wireless LAN Adapter

只顯示選項對應的型號名稱。

Selected options

Name	Model number	Quantity
Air outlet shutter plate	UTR-YDZB	1
Insulation kit for high humidity	UTZ-KXGC	1

Reset OK Cancel

所選選項顯示在“報告”

使用者設定 (2/2)

Used option

Indoor **Outdoor** Other

Number	Outdoor
1	AOYG45LBT8

AOYG45LBT8

Allowed options

- ☒ Central Remote Controller
- ☒ External connect kit
- ☐ External connect kit (for Base heater)

Selected options

Name	Model number	Quantity
Central Remote Controller	UTY-DMMYM	
External connect kit	UTY-XWZXZ3	1

Reset OK Cancel

選擇可選部件

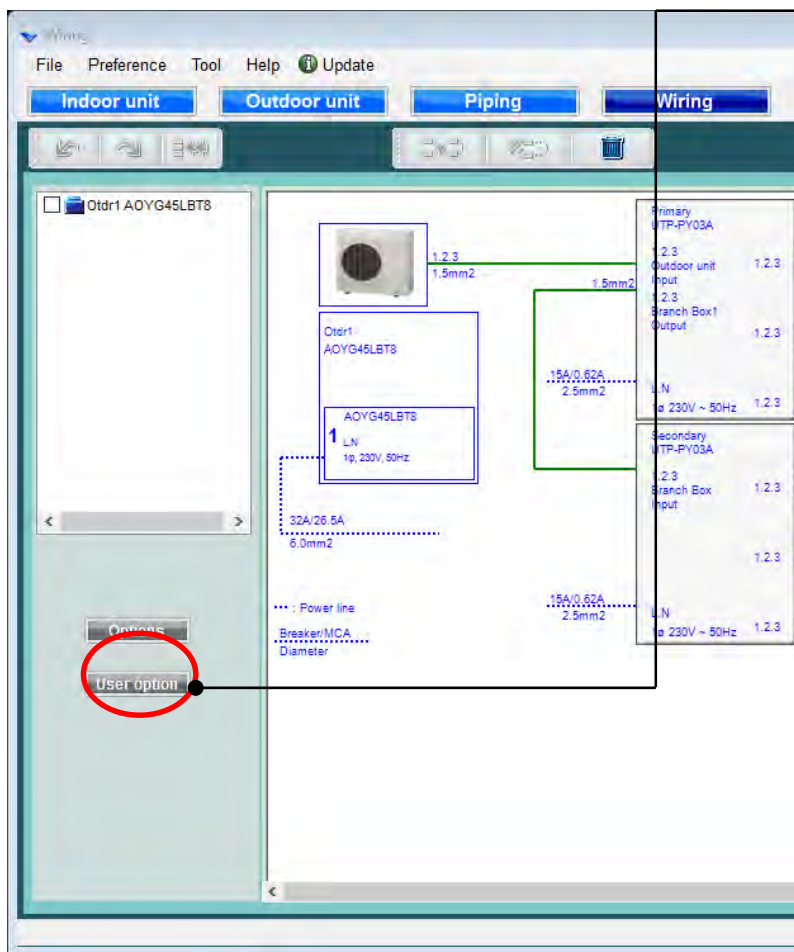
只顯示選項對應的型號名稱。

接線設定

選機軟體

選擇“使用者設定”

打開使用者設定(冷媒)



User options(Refrigerant)

Inside classification
A1

Small classification
A11

User option
☒ A112
☒ A113

Selected user options

User Option item	Quantity
A112	1
A113	1
111	1

Each

Device model name	Quantity
AUXA30GALH	1
AUXB07GALH	2
AUXB14GALH	7

OK Cancel

使用者設定(冷媒)

User options(Refrigerant)

Inside classification
A1

Small classification
A11

User option
☒ A112
☒ A113

Selected user options

User Option item	Quantity
A112	1
A113	1

Each

Device model name	Quantity
AUXA30GALH	1
AUXB07GALH	2
AUXB14GALH	7

OK Cancel

選擇“每個或摘要”

選擇“內部分類”

選擇“小分類”

點選“使用者設定”

點選“用戶選項”

所選選項顯示在“報告”