

Изчисляване на хладилната система

Маркирайте хладилната система

Маркирана хладилната система не може да се редактира на всеки екран

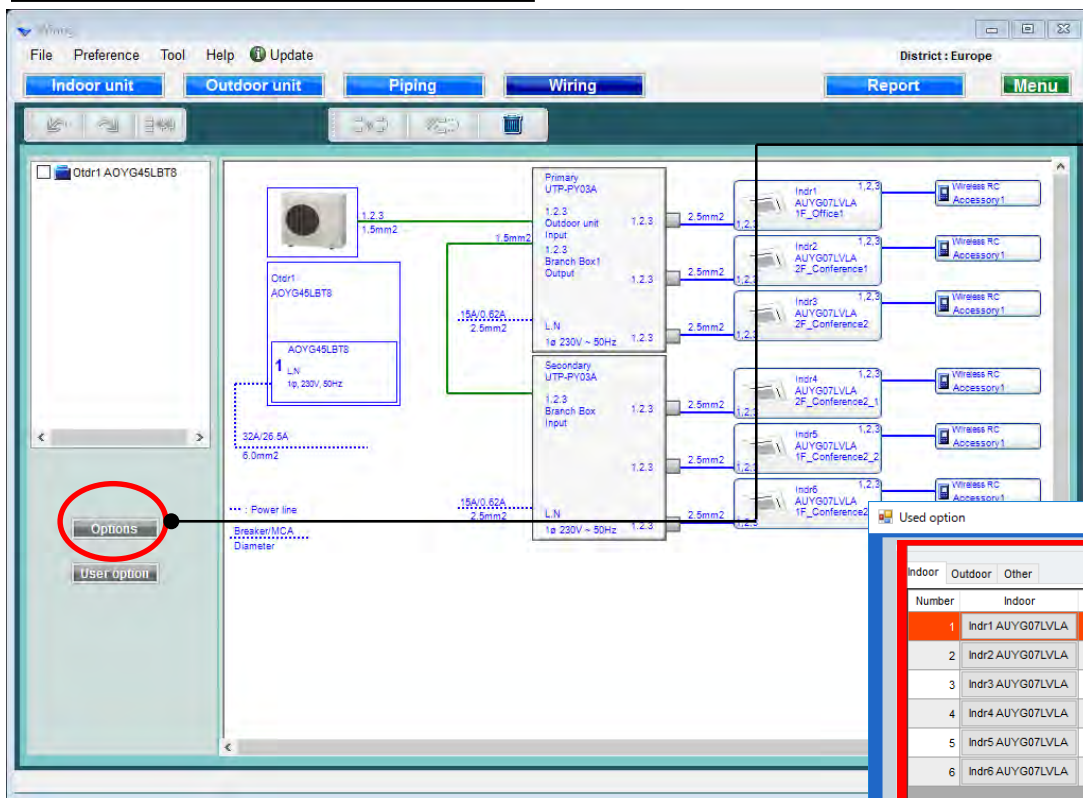
The image displays three screenshots of the Design Simulator software interface, illustrating the process of marking a refrigeration system.

Top Screenshot: The main interface shows the 'Indoor unit' tab selected. The 'Indoor unit' list on the left includes 'Indr1 AOYG45LBT8', which is highlighted with a red circle. The main workspace shows a schematic diagram of the refrigeration system, including the outdoor unit, indoor units, and piping.

Bottom Left Screenshot: This screenshot shows the 'Details of indoor unit' dialog box. It displays the 'Indoor unit type image' and a list of indoor units. The 'Indr1 AOYG45LBT8' unit is selected, and its details are shown in the 'Indoor unit data' section.

Bottom Right Screenshot: This screenshot shows the 'Piping' tab selected. It displays the 'Piping' list on the left, which includes 'Indr1 AOYG45LBT8'. The main workspace shows the piping diagram with the indoor unit highlighted.

Опции



Изберете “Опции”



Отваря екран с използваните опции

The 'Used option' dialog box is shown, displaying a table of used options and a list of allowed options. The 'Indr1 AUYG07LVLA' unit is selected in the table.

Number	Indoor	Gr	RC Line
1	Indr1 AUYG07LVLA	-	0
2	Indr2 AUYG07LVLA	-	3
3	Indr3 AUYG07LVLA	-	3
4	Indr4 AUYG07LVLA	-	3
5	Indr5 AUYG07LVLA	-	3
6	Indr6 AUYG07LVLA	-	0

Allowed options:

- ☐ Air outlet shutter plate
- ☐ Insulation kit for high humidity
- ☐ Fresh air intake kit
- ☐ External connect kit
- ☐ KNX Interface
- ☐ MODBUS interface
- ☐ Wireless Lan interface(FJ-RC-WIFI-1)
- ☐ Wireless LAN Adapter

Selected options:

Name	Model number	Quantity
------	--------------	----------

Използвани опции (1/2)

Used option

Indoor Outdoor Other

Number	Indoor	Gr	RC Line
1	Indr1 AUYG07LVLA	-	3
2	Indr2 AUYG07LVLA	-	3
3	Indr3 AUYG07LVLA	-	3
4	Indr4 AUYG07LVLA	-	3
5	Indr5 AUYG07LVLA	-	3
6	Indr6 AUYG07LVLA	-	0

Indr1 AUYG07LVLA

Remote controller1
Simple RC

Remote controller2
Wired RC

Allowed options

- ☒ Air outlet shutter plate
- ☒ Insulation kit for high humidity
- ☐ Fresh air intake kit
- ☐ External connect kit
- ☐ KNX Interface
- ☐ MODBUS Interface
- ☐ Wireless Lan Interface(FJ-RC-WIFI-1)
- ☐ Wireless LAN Adapter

Selected options

Name	Model number	Quantity
Air outlet shutter plate	UTR-YDZ	1
Insulation kit for high humidity	UTZ-KXGC	1

Reset OK Cancel

Изберете дист.управление

Изберете опционални части

Показва само съвместимите модели.

Избраните опции се извеждат в “Отчета”

Използвани опции (2/2)

Used option

Indoor **Outdoor** Other

Number	Outdoor
1	AOYG45LBT8

AOYG45LBT8

Allowed options

- ☒ Central Remote Controller
- ☒ External connect kit
- ☐ External connect kit (for Base heater)

Selected options

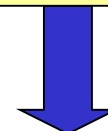
Name	Model number	Quantity
Central Remote Controller	UTY-DMMYM	
External connect kit	UTY-XWZXZ3	1

Reset OK Cancel

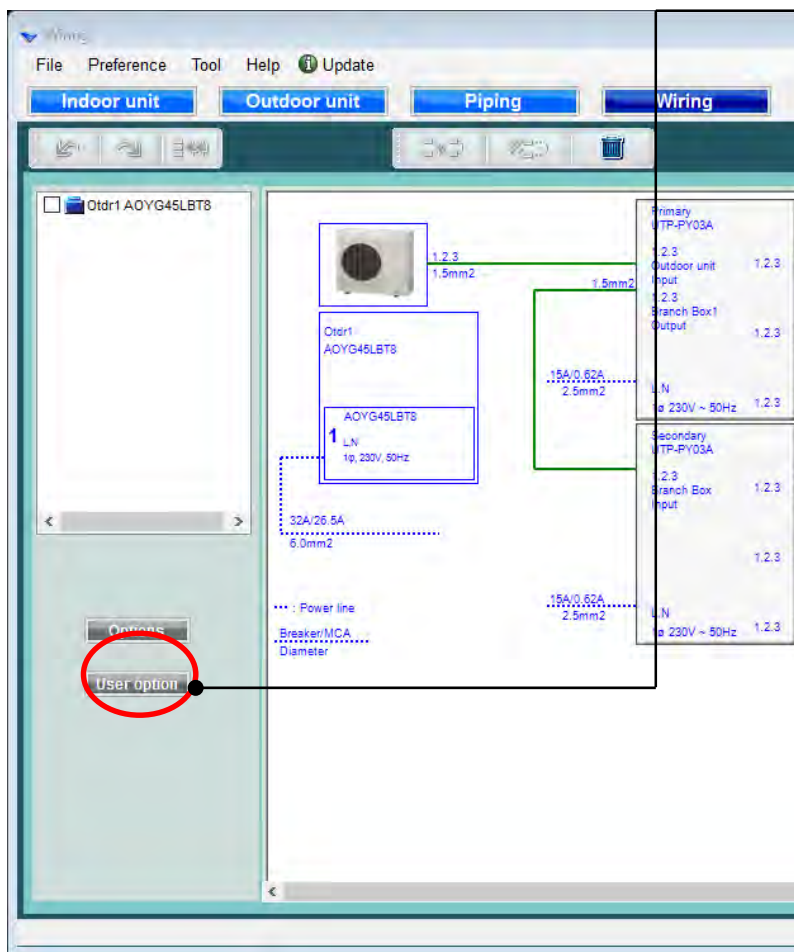
Изберете опционални части

Показва само съвместимите модели.

Изберете “Потребителски опции”



Отворени “Потребителски опции” (хлад.агент)



User options(Refrigerant)

Inside classification
A1

Small classification
A11

User option

☒ A112
☒ A113

Selected user options

User Option item	Quantity
A112	1
A113	1
111	1

Each

Device model name	Quantity
AUXA30GALH	1
AUXB07GALH	2
AUXB14GALH	7

OK Cancel

“Потребителски опции” (хлад.агент)

User options(Refrigerant)

Inside classification
A1

Small classification
A11

User option
☒ A112
☒ A113

Selected user options

User Option item	Quantity
A112	1
A113	1

Each

Device model name	Quantity
AUXA30GALH	1
AUXB07GALH	2
AUXB14GALH	7

OK Cancel

Изберете “Единично или общо”

Изберете “Категория”

Изберете “Под-категория”

Маркирайте “Потреб.опции”

Маркирани “Потреб.опции”

Избраните опции се извеждат в “Отчета”