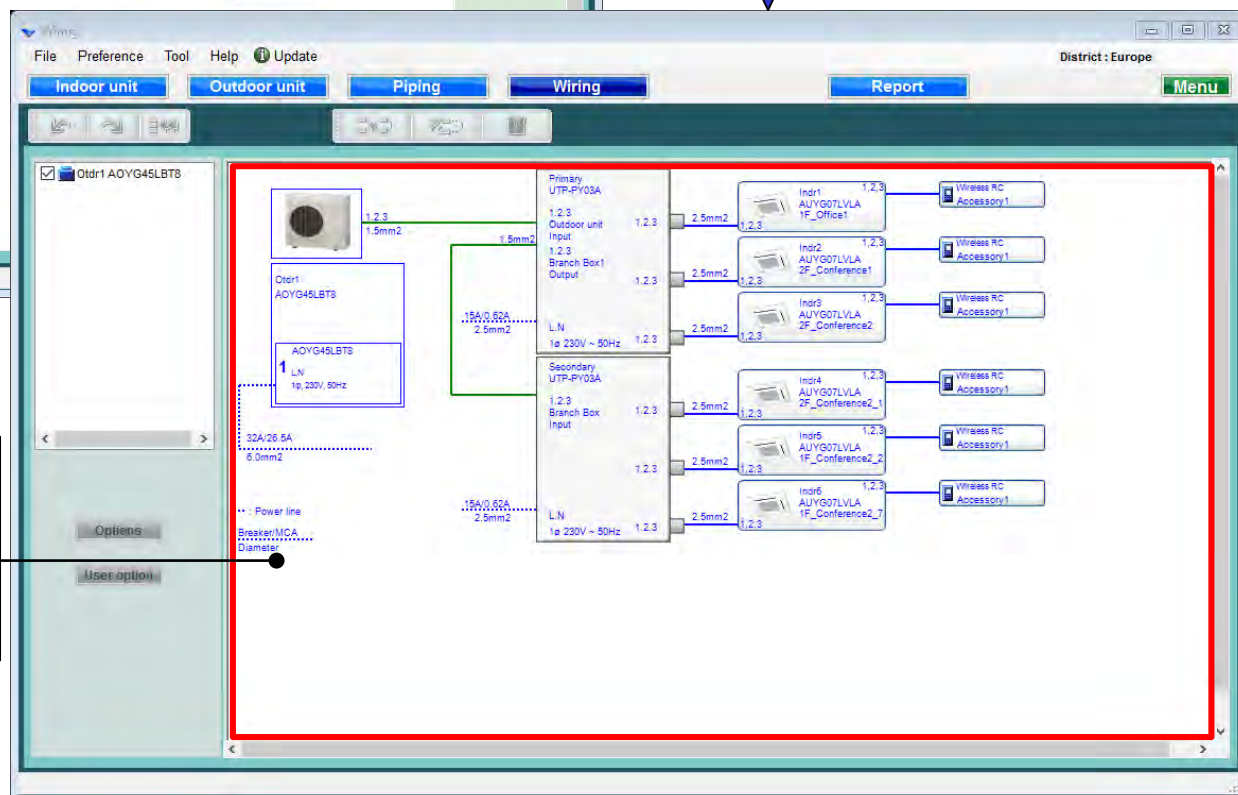


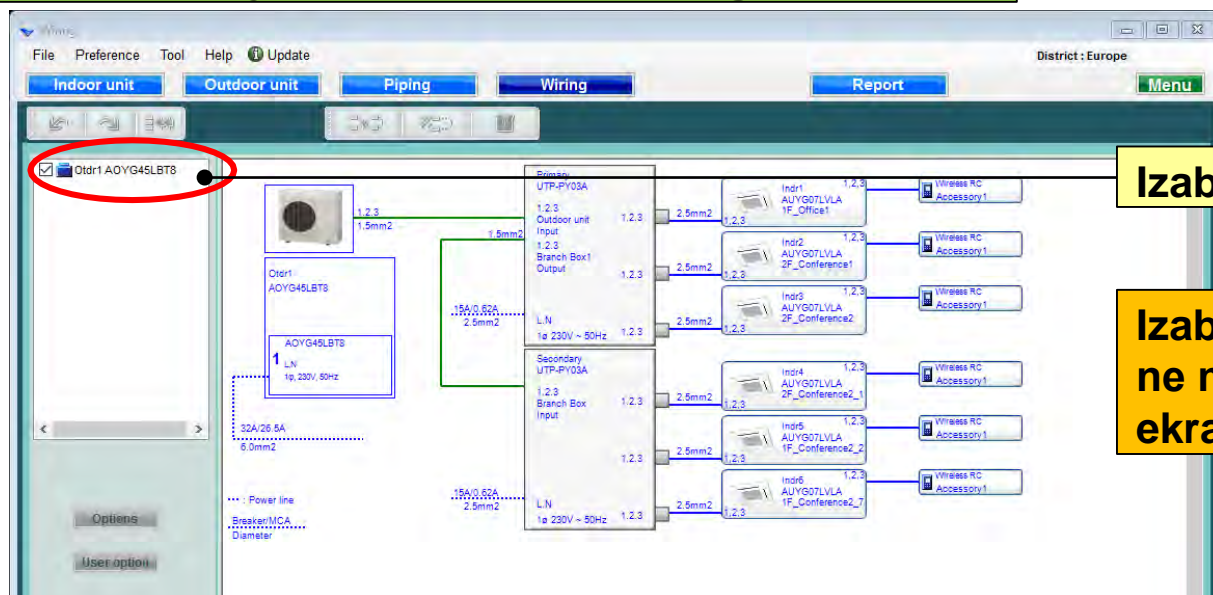
Izaberite “Kabliranje”

Kreiranje dijagrama kabliranja

Prikaz informacija o
kابلu: Trenutna vrednost
za svaki uređaj
Priključak za svaki uređaj

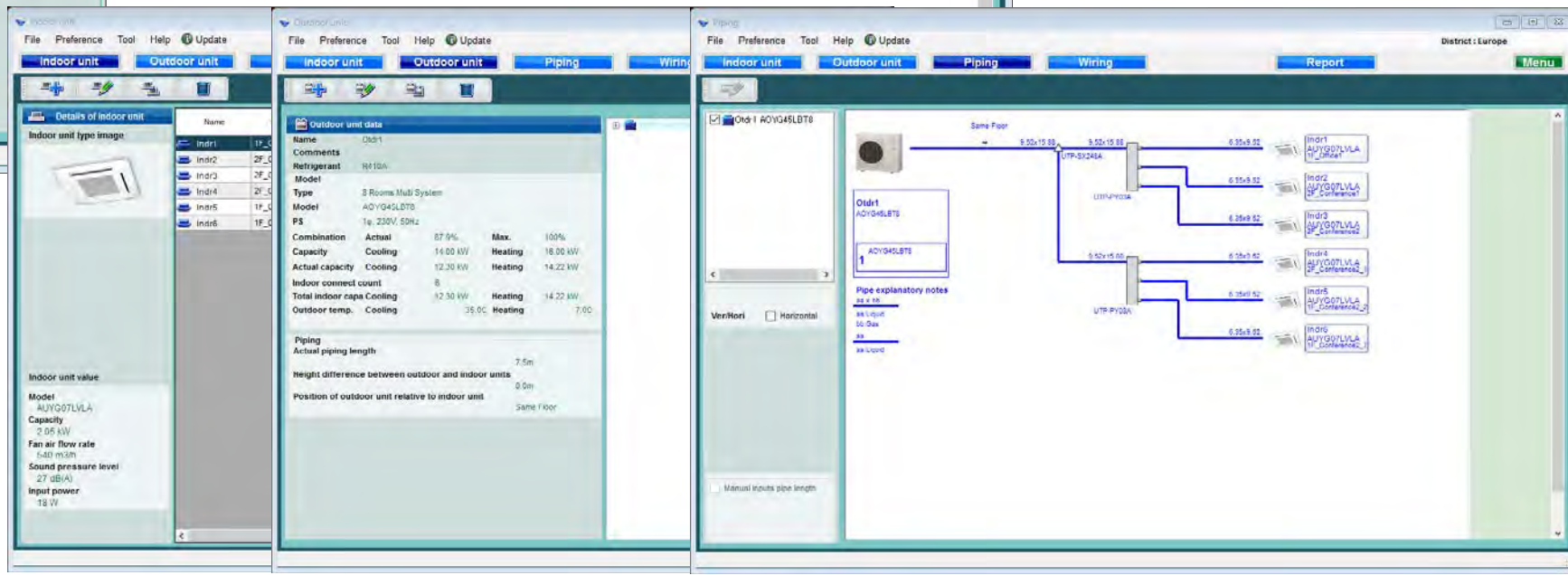


Određivanje sistema rashladnog fluida

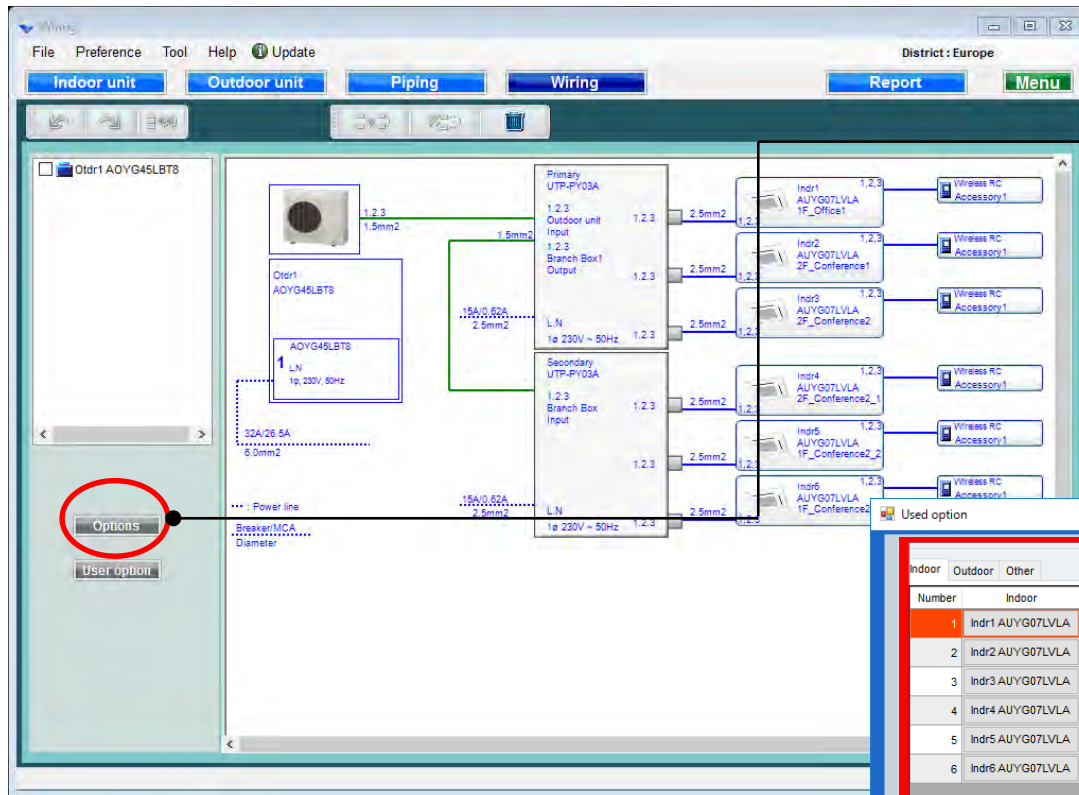


Izaberite sistem rashladnog fluida

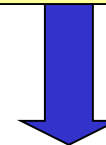
Izabrani sistem rashladnog fluida ne može se uređivati na svakom ekranu



Opcije



Izaberite “Opcije”



Otvorite ekran sa korišćenim opcijama.

The 'Used option' dialog box is shown, displaying a table of used options and a list of allowed options.

Number	Indoor	Gr	RC Line
1	Indr1 AUYG07LVLA	-	0
2	Indr2 AUYG07LVLA	-	3
3	Indr3 AUYG07LVLA	-	3
4	Indr4 AUYG07LVLA	-	3
5	Indr5 AUYG07LVLA	-	3
6	Indr6 AUYG07LVLA	-	0

Allowed options:

- ☐ Air outlet shutter plate
- ☐ Insulation kit for high humidity
- ☐ Fresh air intake kit
- ☐ External connect kit
- ☐ KNX Interface
- ☐ MODBUS interface
- ☐ Wireless Lan interface(FJ-RC-WIFI-1)
- ☐ Wireless LAN Adapter

Selected options:

Name	Model number	Quantity
------	--------------	----------

Korišćene opcije(1/2)

Used option

Indoor Outdoor Other

Number	Indoor	Gr	RC Line
1	Indr1 AUYG07LVLA	-	3
2	Indr2 AUYG07LVLA	-	3
3	Indr3 AUYG07LVLA	-	3
4	Indr4 AUYG07LVLA	-	3
5	Indr5 AUYG07LVLA	-	3
6	Indr6 AUYG07LVLA	-	0

Indr1 AUYG07LVLA

Remote controller1
Simple RC

Remote controller2
Wired RC

Allowed options

- ☒ Air outlet shutter plate
- ☒ Insulation kit for high humidity
- ☐ Fresh air intake kit
- ☐ External connect kit
- ☐ KNX Interface
- ☐ MODBUS Interface
- ☐ Wireless Lan Interface(FJ-RC-WIFI-1)
- ☐ Wireless LAN Adapter

Selected options

Name	Model number	Quantity
Air outlet shutter plate	UTR-YDZB	1
Insulation kit for high humidity	UTZ-KXGC	1

Reset OK Cancel

Izaberite daljinski upravljač

Izaberite opcione delove

Prikazan je samo model opcije koji odgovara

Izabrane opcije su prikazane u "Izveštaju"

Korišćene opcije(2/2)

Used option

Indoor **Outdoor** Other

Number	Outdoor
1	AOYG45LBT8

AOYG45LBT8

Allowed options

- ☒ Central Remote Controller
- ☒ External connect kit
- ☐ External connect kit (for Base heater)

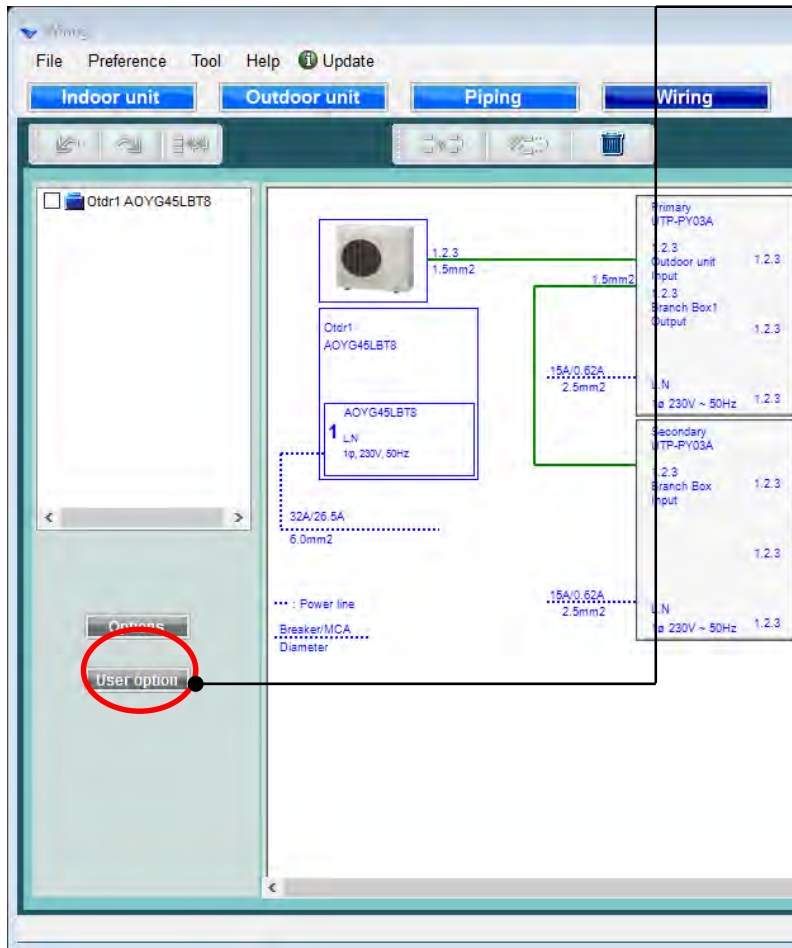
Selected options

Name	Model number	Quantity
Central Remote Controller	UTY-DMMYM	
External connect kit	UTY-XWZXZ3	1

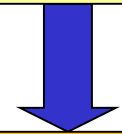
Reset OK Cancel

Izaberite opcione delove

Prikazan je samo model opcije koji odgovara.



Izaberite “Korisničke opcije”



Izaberite korisničke opcije
(rashladni fluid)

The 'User options(Refrigerant)' dialog box is open. It contains the following sections:

- Inside classification:** A1
- Small classification:** A11
- User option:** A112 and A113 are checked.
- Selected user options:**

User Option item	Quantity
A112	1
A113	1
111	1

The 'Each' tab is selected, showing a table with device model names and quantities:

Device model name	Quantity
AUXA30GALH	1
AUXB07GALH	2
AUXB14GALH	7

Buttons for 'OK' and 'Cancel' are at the bottom.

Korisničke opcije (rashladni fluid)

User options(Refrigerant)

Inside classification
A1

Small classification
A11

User option
☒ A112
☒ A113

Selected user options

User Option item	Quantity
A112	1
A113	1

Each

Device model name	Quantity
AUXA30GALH	1
AUXB07GALH	2
AUXB14GALH	7

OK Cancel

Izaberite "Zasebno ili Grupisano"

Izaberite "Unutrašnja klasifikacija"

Izaberite "detaljniju klasifikaciju"

Izaberite "Korisničke opcije"

Izaberite "Korisničke opcije"

Izabrane opcije su prikazane u "Izveštaju"