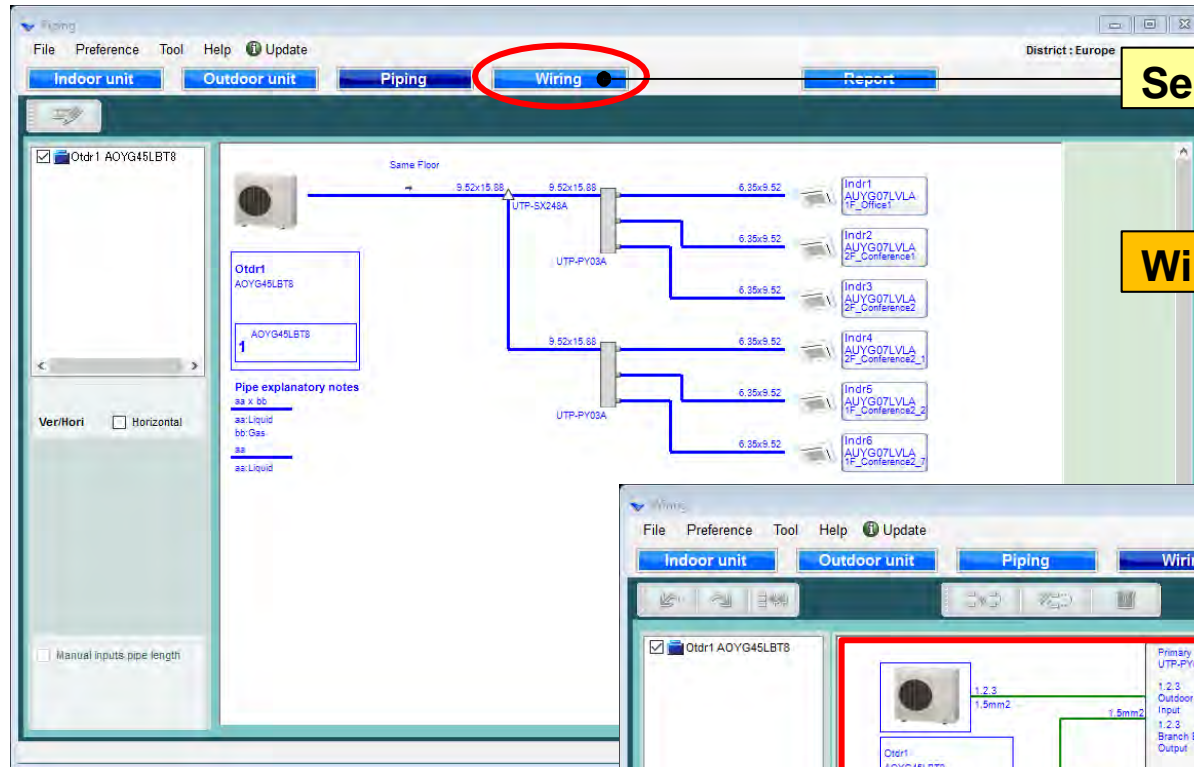


Wiring settings

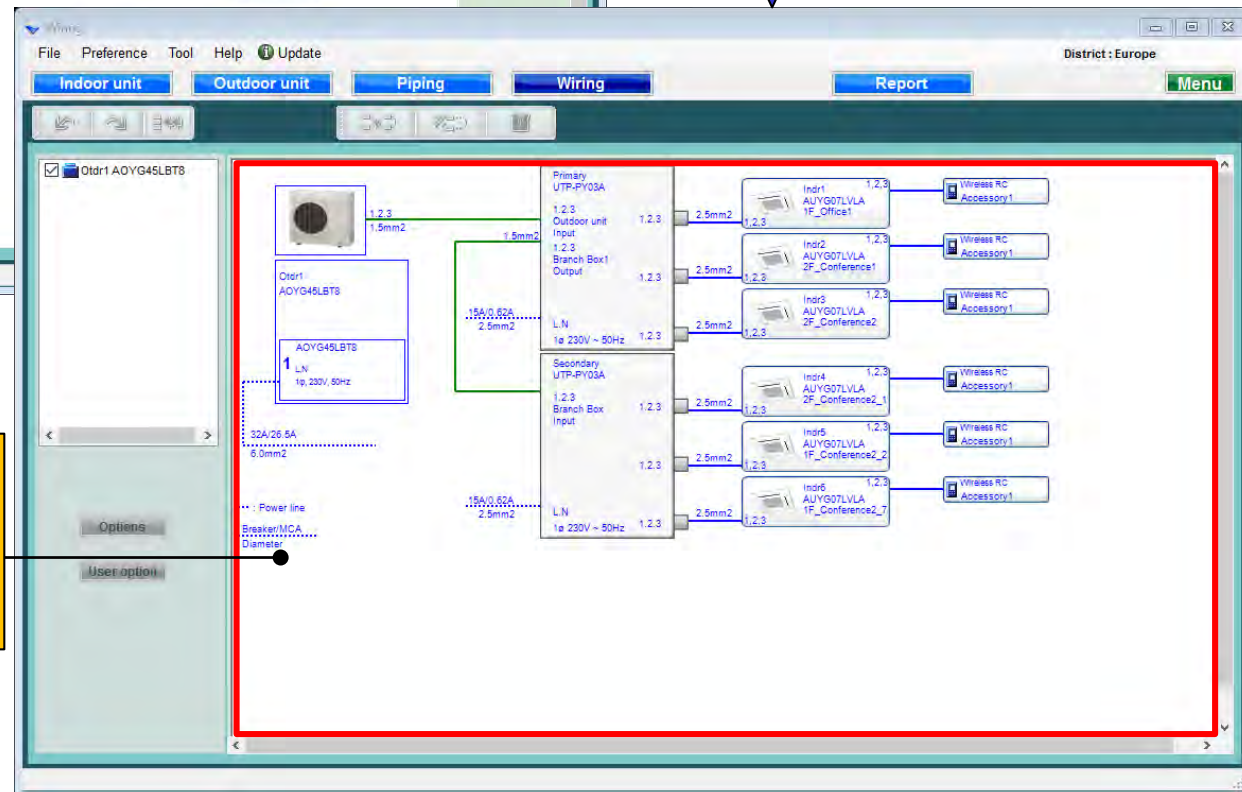
Design Simulator



Select "Wiring"

Wiring system diagram creation

Wire information display:
Current value for each
device Connection port
for each device



Refrigerant system determination

Check the refrigerant system

Checked refrigerant system
cannot be edited at each screen

The image displays three screenshots of the Design Simulator software interface, illustrating the process of checking and determining the refrigerant system.

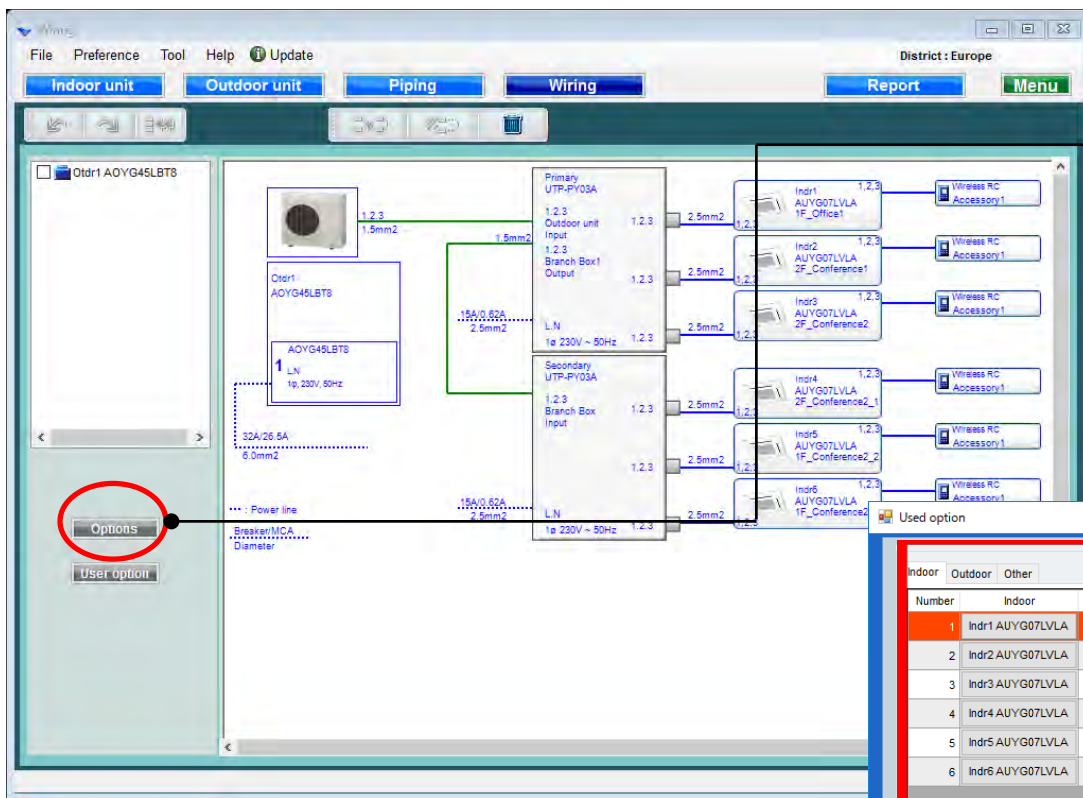
Top Screenshot: Shows the main wiring diagram. The 'Indoor unit' tab is selected. A red circle highlights the 'Indr1 AOYG45LBT8' unit. The diagram shows connections between the indoor unit, outdoor unit, and various indoor units (Indr1 to Indr6) via piping and wiring.

Bottom Left Screenshot: Shows the 'Details of indoor unit' window. It displays the 'Indoor unit type image' and a list of indoor units (Indr1 to Indr6) with their respective specifications.

Bottom Middle Screenshot: Shows the 'Outdoor unit data' window. It displays the 'Outdoor unit data' for 'Indr1' and provides detailed specifications for the outdoor unit, including capacity, power, and piping details.

Bottom Right Screenshot: Shows the 'Wiring' window. It displays the wiring diagram for the indoor unit, showing connections to various indoor units (Indr1 to Indr6) via wiring and piping.

Options



Select "Options"

Open used option screen.

The 'Used option' dialog box is open, showing the 'Indoor' tab. It contains a table of indoor units and their RC line connections. The 'Indr1 AOYG07LVLA' unit is highlighted, and its options are shown on the right.

Number	Indoor	Gr	RC Line
1	Indr1 AOYG07LVLA	-	0
2	Indr2 AOYG07LVLA	-	3
3	Indr3 AOYG07LVLA	-	3
4	Indr4 AOYG07LVLA	-	3
5	Indr5 AOYG07LVLA	-	3
6	Indr6 AOYG07LVLA	-	0

Indr1 AOYG07LVLA

Remote controller1
Wireless RC

Remote controller2
Wireless RC

Allowed options

- ☐ Air outlet shutter plate
- ☐ Insulation kit for high humidity
- ☐ Fresh air intake kit
- ☐ External connect kit
- ☐ KNX Interface
- ☐ MODBUS interface
- ☐ Wireless Lan interface(FJ-RC-WIFI-1)
- ☐ Wireless LAN Adapter

Selected options

Name	Model number	Quantity
------	--------------	----------

Reset OK Cancel

Used option(1/2)

Indoor Outdoor Other

Number	Indoor	Gr	RC Line
1	Indr1 AUYG07LVLA	-	3
2	Indr2 AUYG07LVLA	-	3
3	Indr3 AUYG07LVLA	-	3
4	Indr4 AUYG07LVLA	-	3
5	Indr5 AUYG07LVLA	-	3
6	Indr6 AUYG07LVLA	-	0

Indr1 AUYG07LVLA

Remote controller1
Simple RC

Remote controller2
Wired RC

Allowed options

- ☒ Air outlet shutter plate
- ☒ Insulation kit for high humidity
- ☐ Fresh air intake kit
- ☐ External connect kit
- ☐ KNX Interface
- ☐ MODBUS Interface
- ☐ Wireless Lan Interface(FJ-RC-WIFI-1)
- ☐ Wireless LAN Adapter

Selected options

Name	Model number	Quantity
Air outlet shutter plate	UTR-YDZB	1
Insulation kit for high humidity	UTZ-KXGC	1

Select remote controller

Select Optional parts

Only the model name of option to correspond is displayed.

Reset OK Cancel

The selected options are displayed in "Report"

Used option(2/2)

Used option

Indoor **Outdoor** Other

Number	Outdoor
1	AOYG45LBT8

AOYG45LBT8

Allowed options

- ☒ Central Remote Controller
- ☒ External connect kit
- ☐ External connect kit (for Base heater)

Selected options

Name	Model number	Quantity
Central Remote Controller	UTY-DMMYM	
External connect kit	UTY-XWZXZ3	1

Reset OK Cancel

Select Optional parts

Only the model name of option to correspond is displayed.

Select "User Options"

Open User options (Refrigerant)

The 'User options(Refrigerant)' dialog box is open, showing the following details:

- Inside classification:** A1
- Small classification:** A11
- User option:** ☒ A112, ☒ A113
- Selected user options:**

User Option item	Quantity
A112	1
A113	1
111	1

Each

Device model name	Quantity
AUXA30GALH	1
AUXB07GALH	2
AUXB14GALH	7

OK Cancel

User option (Refrigerant)

User options(Refrigerant)

Inside classification
A1

Small classification
A11

User option
☒ A112
☒ A113

Selected user options

User Option item	Quantity
A112	1
A113	1

Each

Device model name	Quantity
AUXA30GALH	1
AUXB07GALH	2
AUXB14GALH	7

OK Cancel

Select "Each or Summary"

Select "Inside classification"

Select "Small classification"

Check "User option"

Check "User option"

The selected options are displayed in "Report"