

# Piping settings

## Design Simulator

The image shows the Design Simulator software interface. The main window has a menu bar (File, Preference, Tool, Help, Update) and a toolbar. Below the toolbar, there are three tabs: Outdoor unit, Piping, and Wiring. The Piping tab is selected and highlighted with a red circle. A yellow callout box with a blue arrow points to the Piping tab, containing the text "Select 'Piping settings'".

Below the tabs, there is a table with the following data:

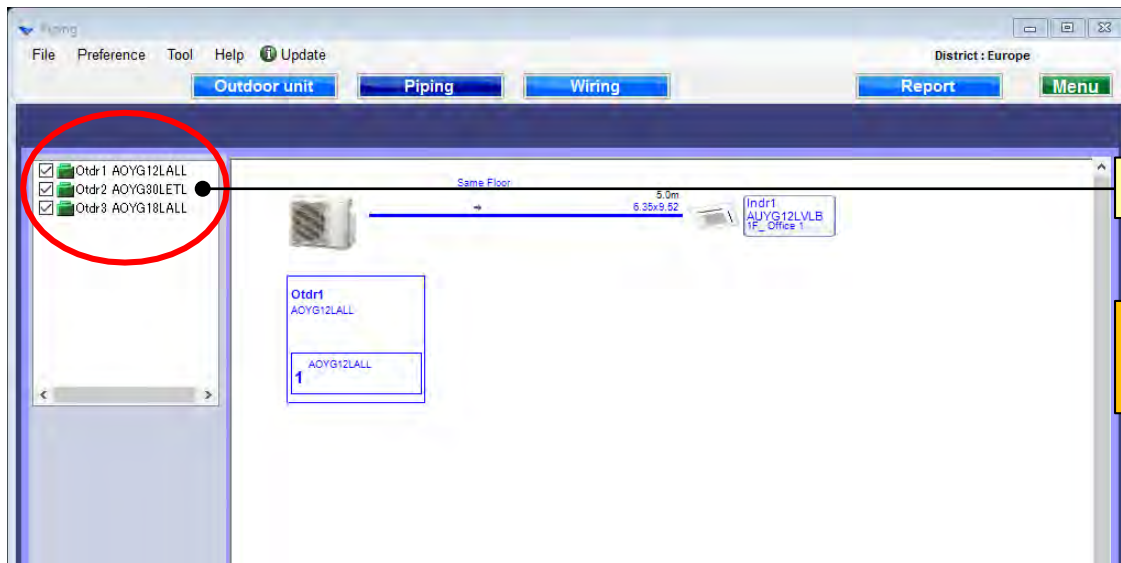
Name	Indoor	Outdoor
Comments	Indr1	Otdr1
Refrigerant	1F_Office 1	
Model		
Type	CompactCassette	
Model	AUYG12LVLB	AOYG12LALL
PS	230V, 50Hz	
Capacity	3.50 kW	4.10 kW
Indoor temperature	27.0C	20.0C
Outdoor temp.	35.0C	7.0C
Required capacity	TC 2.00 kW	SC 2.00 kW
Actual capacity	4.40 kW	3.07 kW
Additional refrigerant	0.0 lbs	
Fan air flow rate	410 - 600 m3/h	
Sound pressure level	27 - 37 dB(A)	
Input power	1050 W	
Piping		
Total pipe length		
Height difference between outdoor and indoor units		

Below the table, there are icons for the indoor and outdoor units. The outdoor unit is a compact cassette, and the indoor unit is a ceiling-mounted unit.

A second window titled "Piping" is shown in the foreground. It has a menu bar (File, Preference, Tool, Help, Update) and a toolbar. Below the toolbar, there are three tabs: Outdoor unit, Piping, and Wiring. The Piping tab is selected. A yellow callout box with a blue arrow points to the Piping tab, containing the text "Show Piping system diagram".

The Piping window displays a piping system diagram. On the left, there is a list of outdoor units: Otdr1 AOYG12LALL, Otdr2 AOYG30LETL, and Otdr3 AOYG18LALL. The diagram shows a horizontal pipe labeled "Same Floor" with a distance of 5.0m and a flow rate of 6.35x9.52. The indoor unit is labeled "Indr1 AUYG12LVLB 1F\_Office 1".

## Refrigerant system determination



Check the refrigerant system

Checked refrigerant system cannot be edited at each screen

