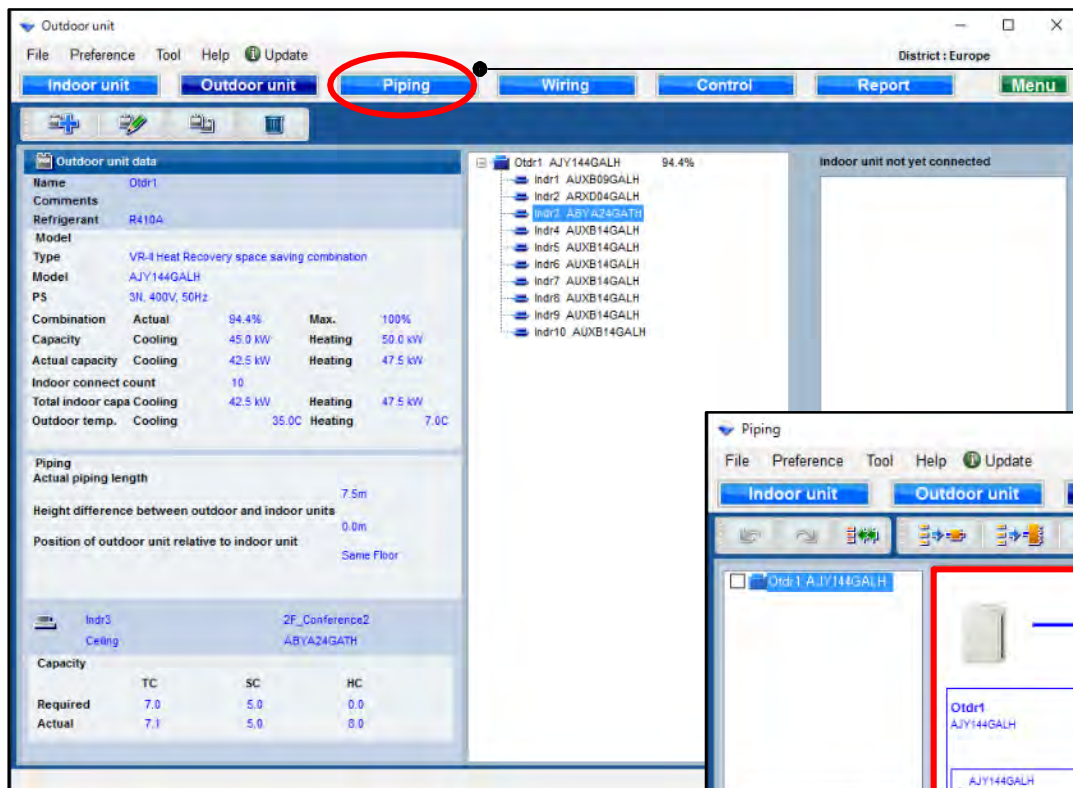


管道系統

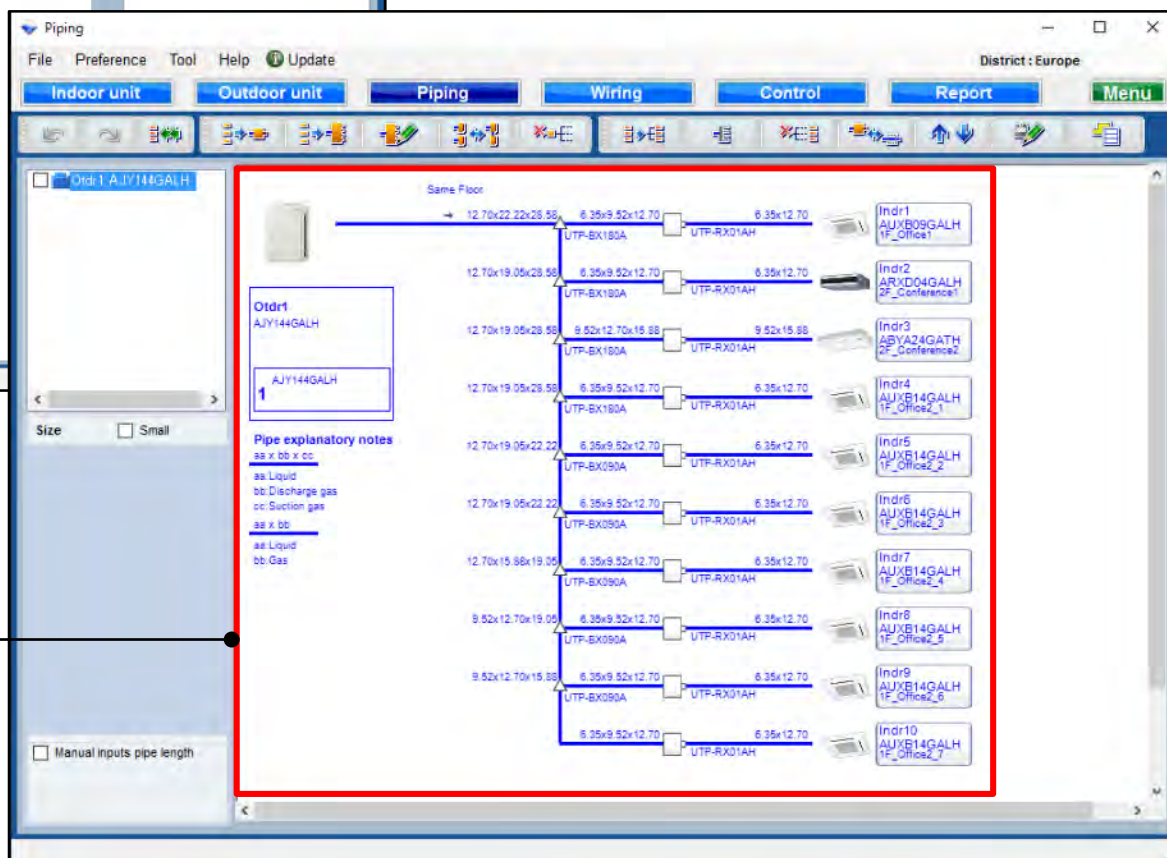
選機軟體



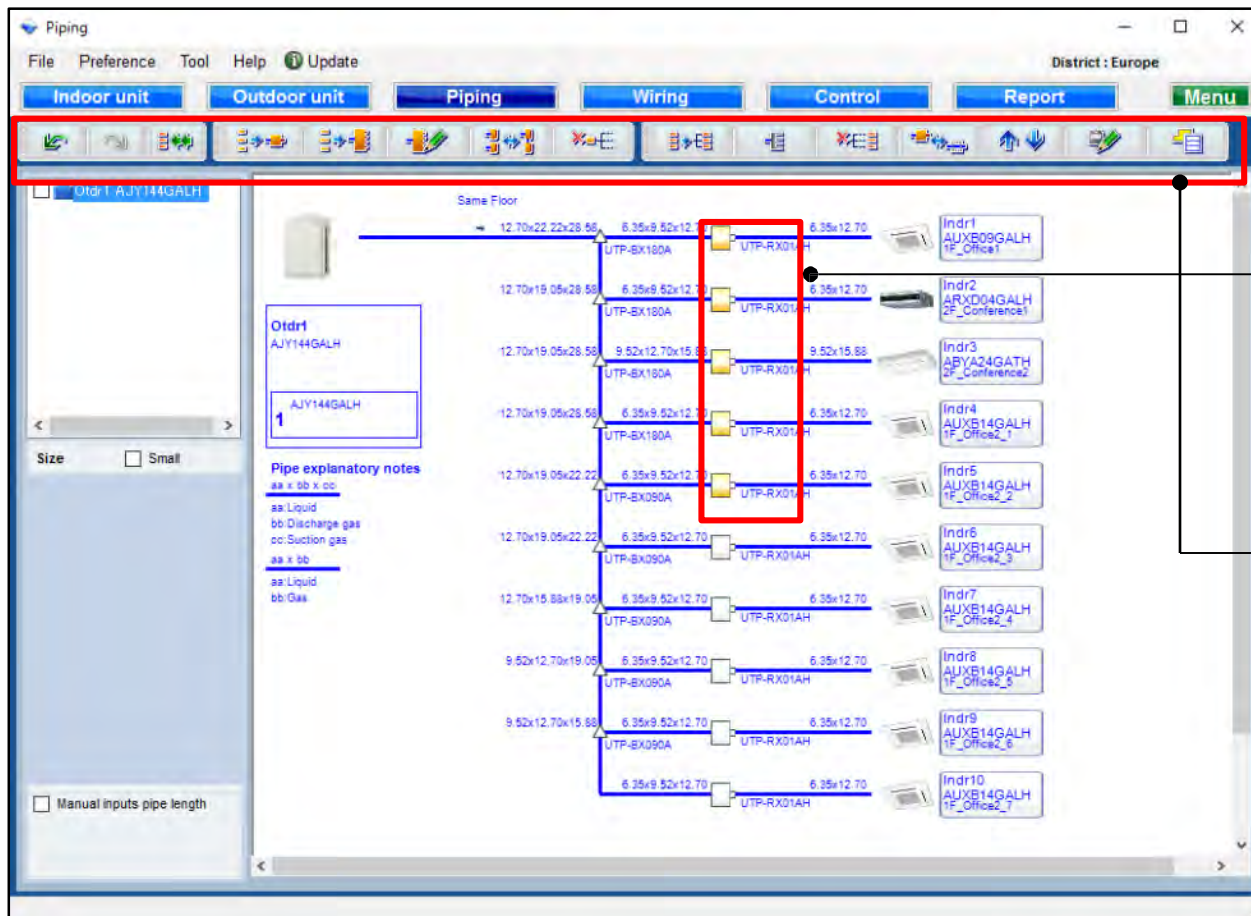
選擇“管線”

管線系統圖創建

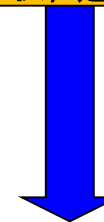
顯示管道直徑，室外機，
室內機和連接型號名稱。



熱回收系統

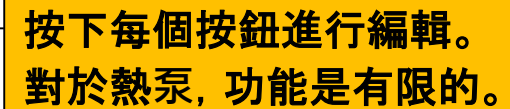


對於熱量回收，選擇RB Unit。

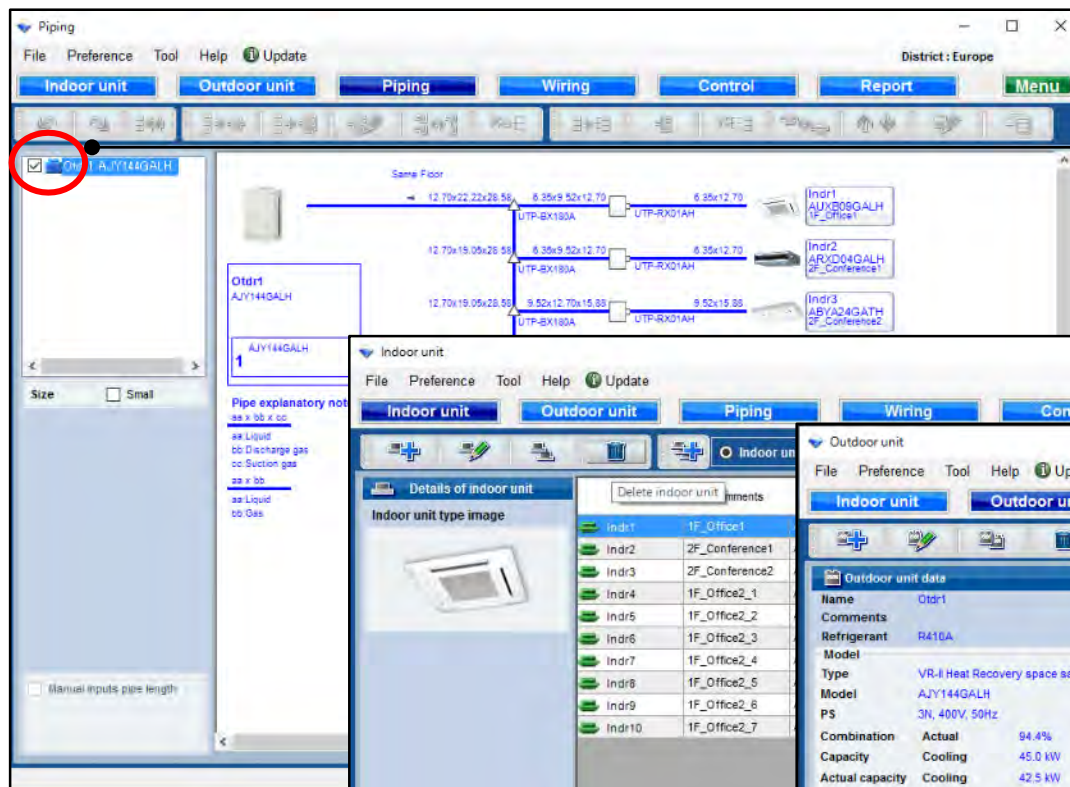


按下每個按鈕進行編輯。

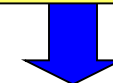
對於熱泵，選擇室內機。



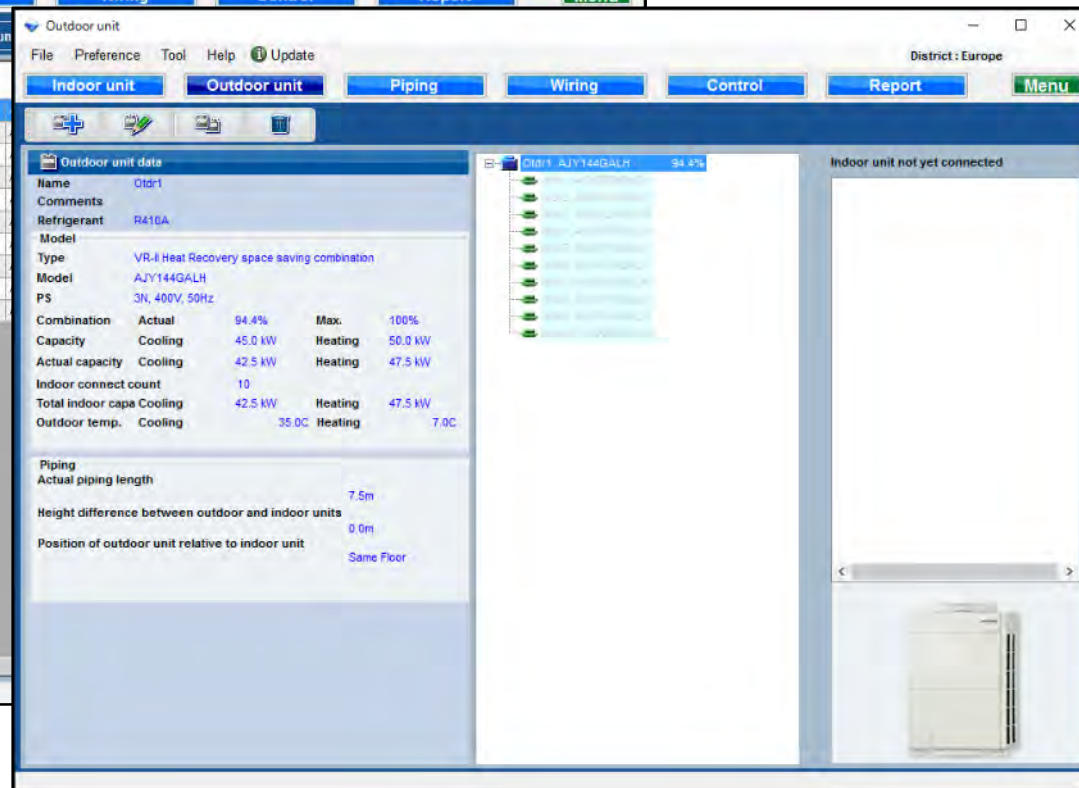
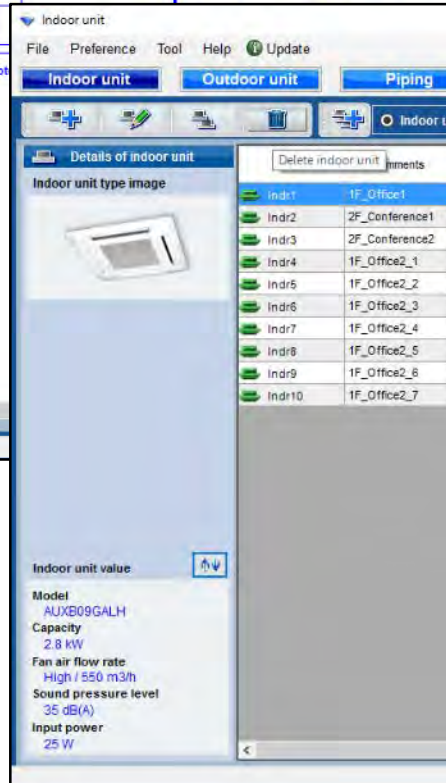
冷媒系統功能確認



點選冷媒系統



點選冷媒系統
不能在每個螢幕上編輯



管道系統

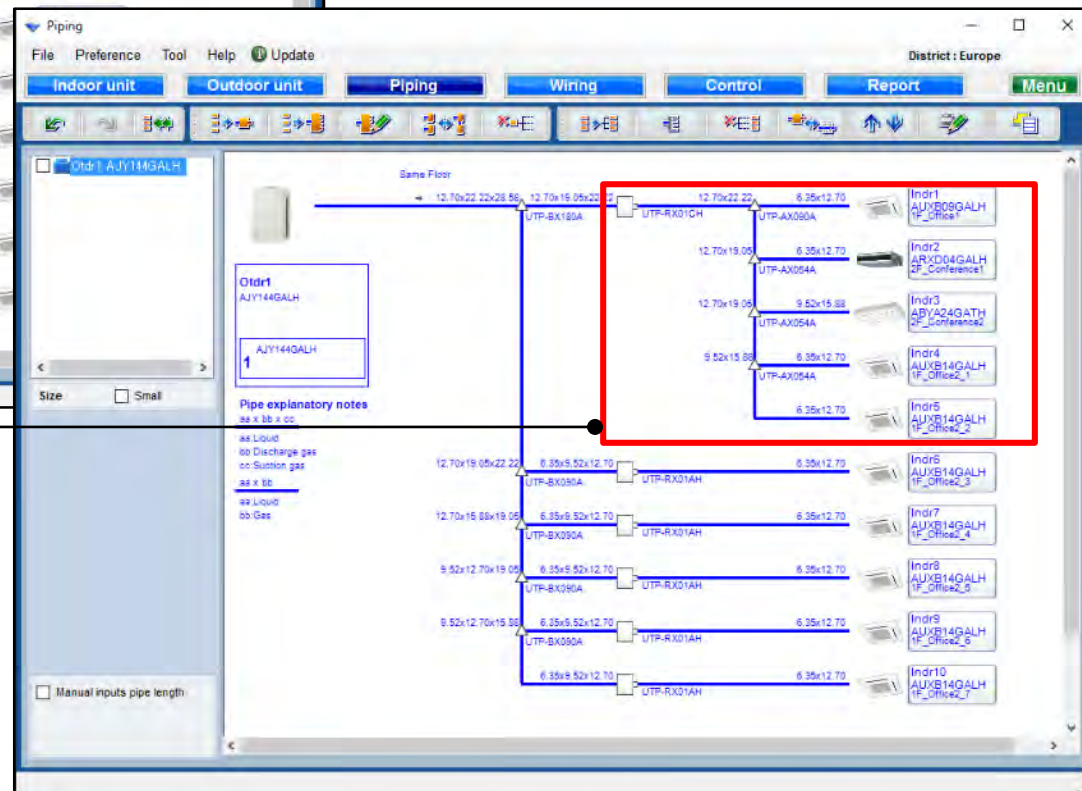
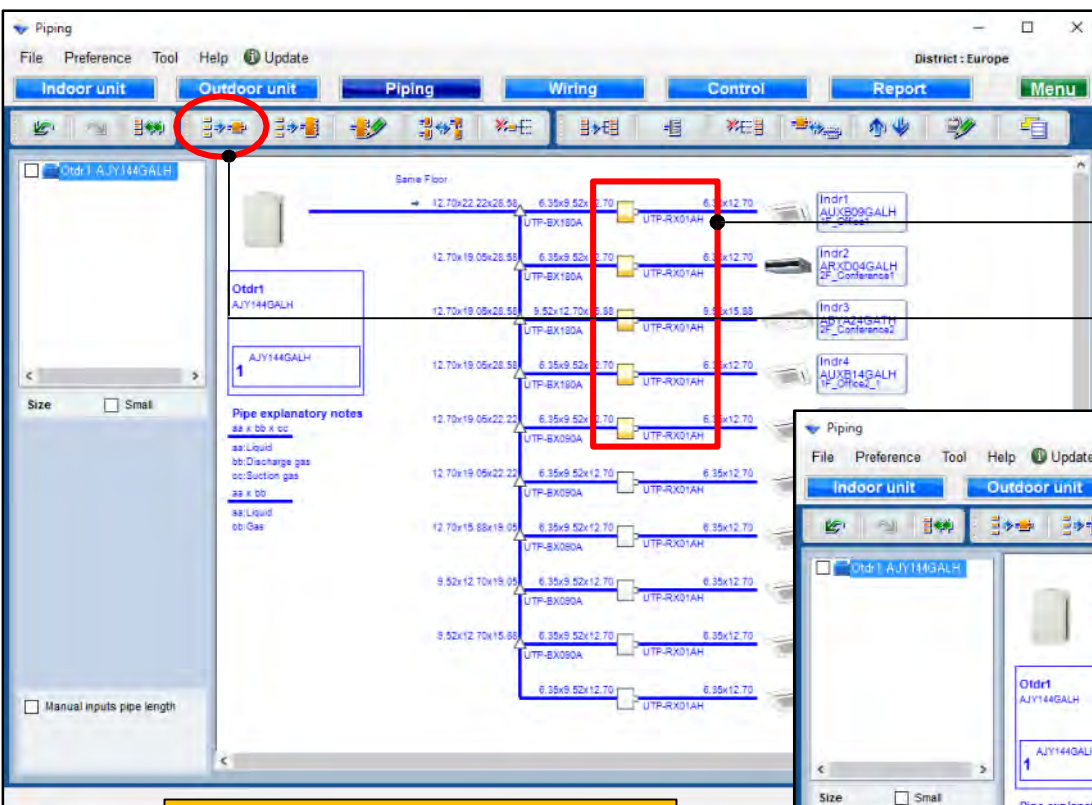
選機軟體

RB單一功能

選擇 RB 機種

選擇“RB 單一”

連結室內機



管道系統

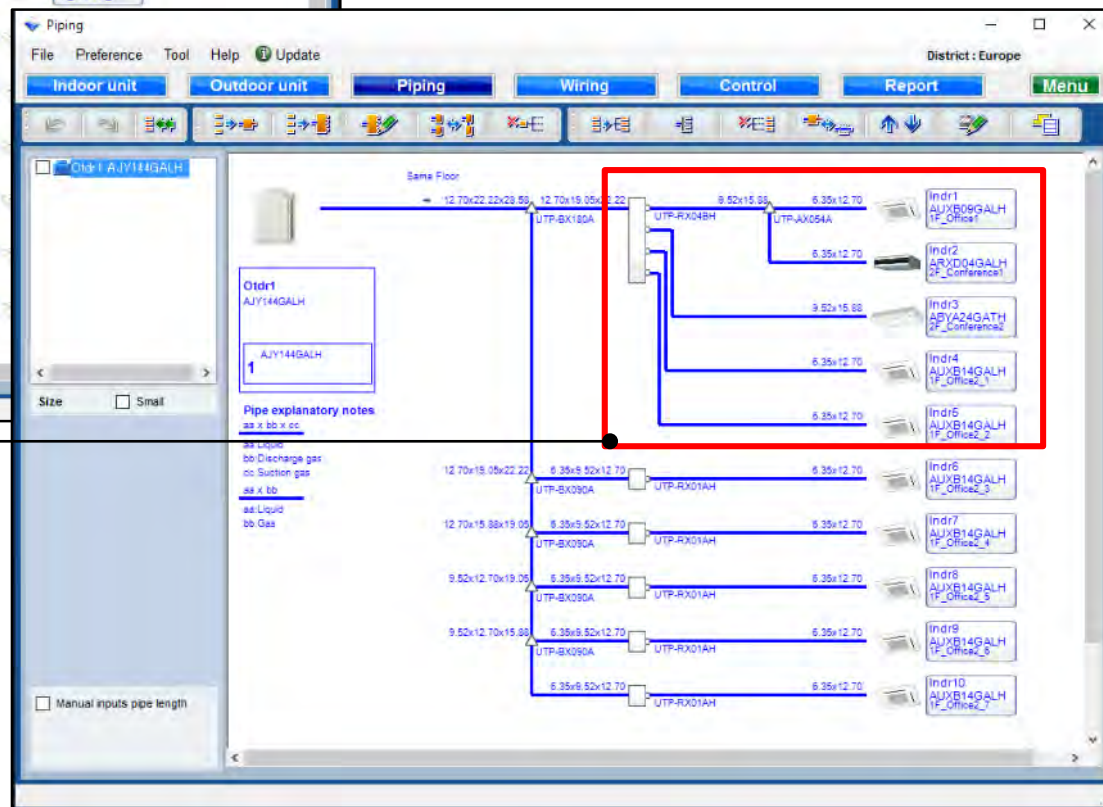
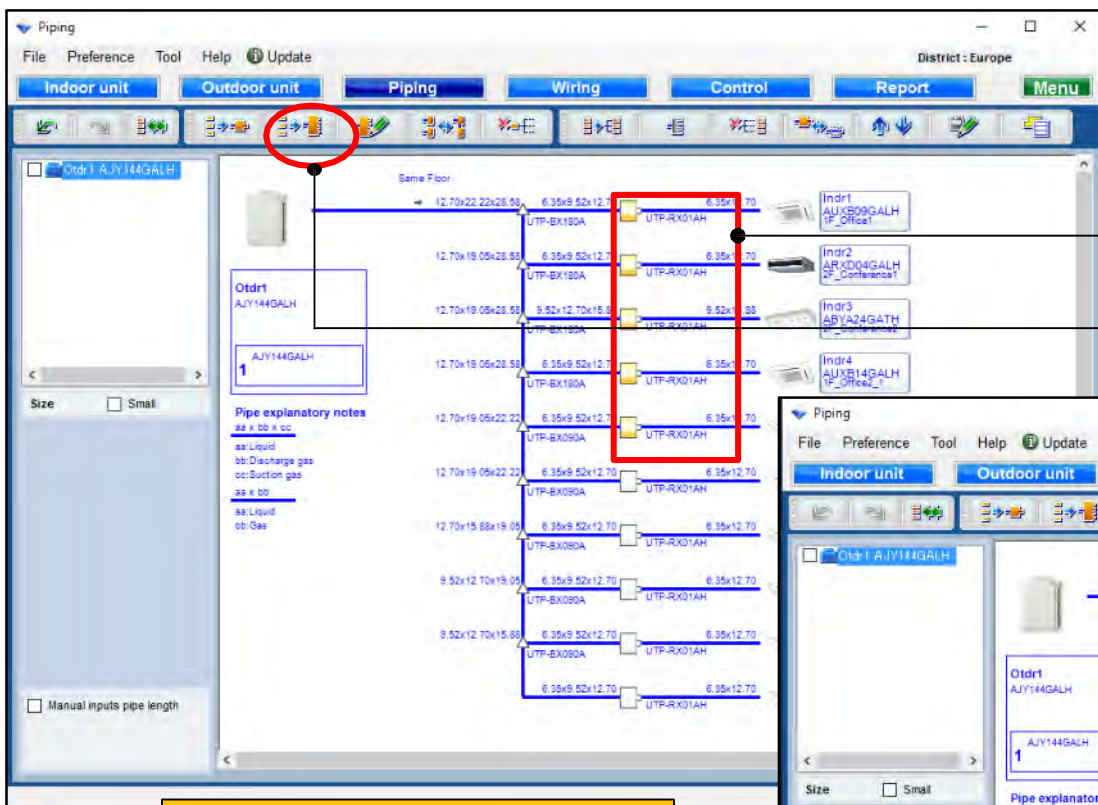
選機軟體

RB多功能

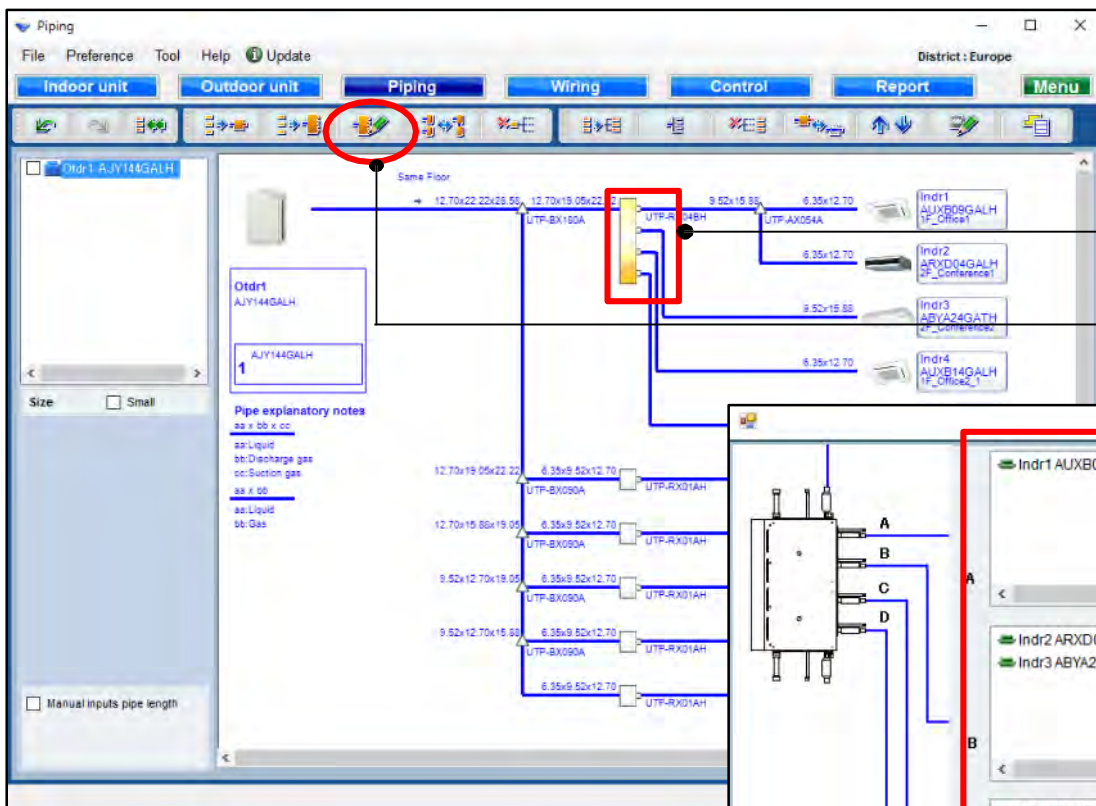
選擇RB 機種

選擇“RB 多”

連結室內機



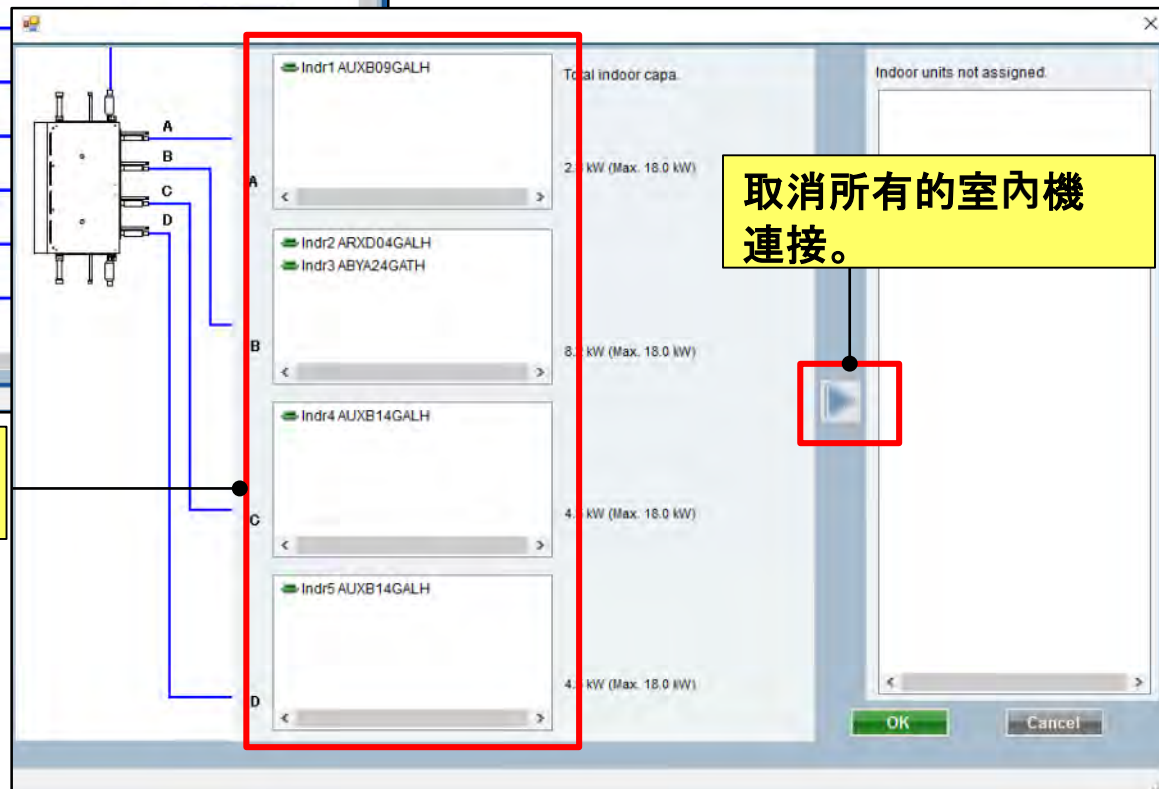
RB多重組合功能



選擇 RB 多聯機種

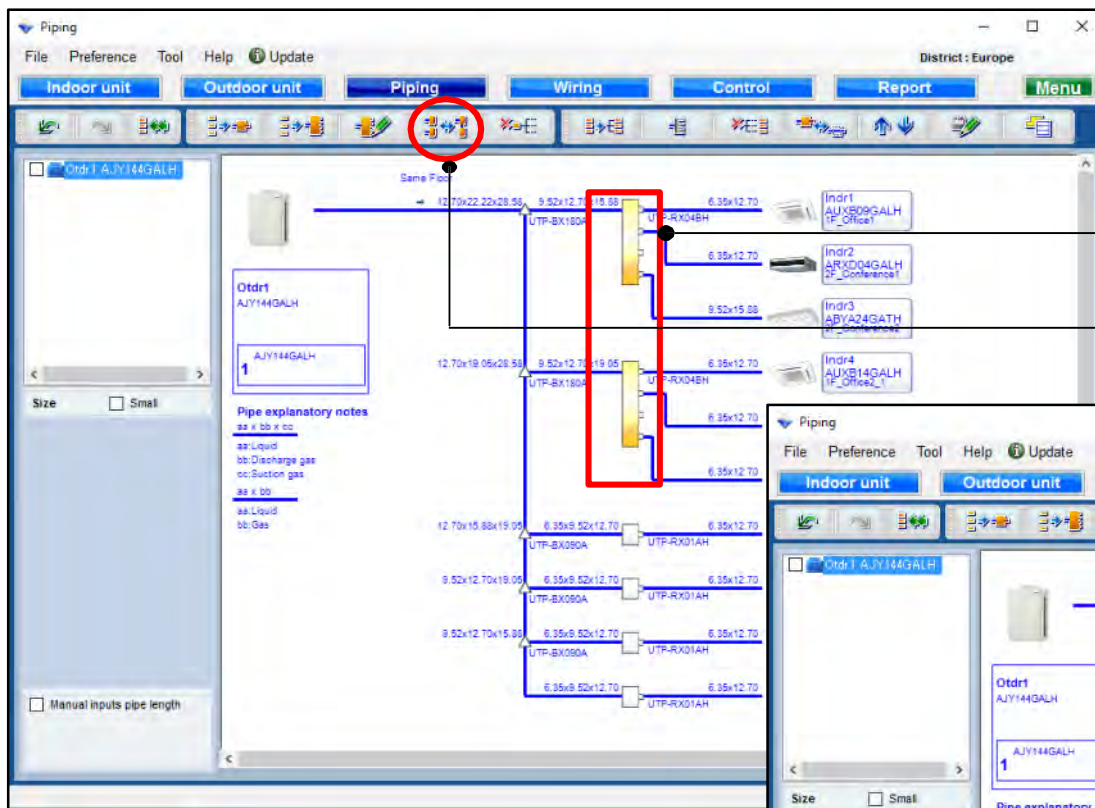
選擇
“RB多聯”

使用RB多功能時的室內機連接方法可以更改。



取消所有的室內機
連接。

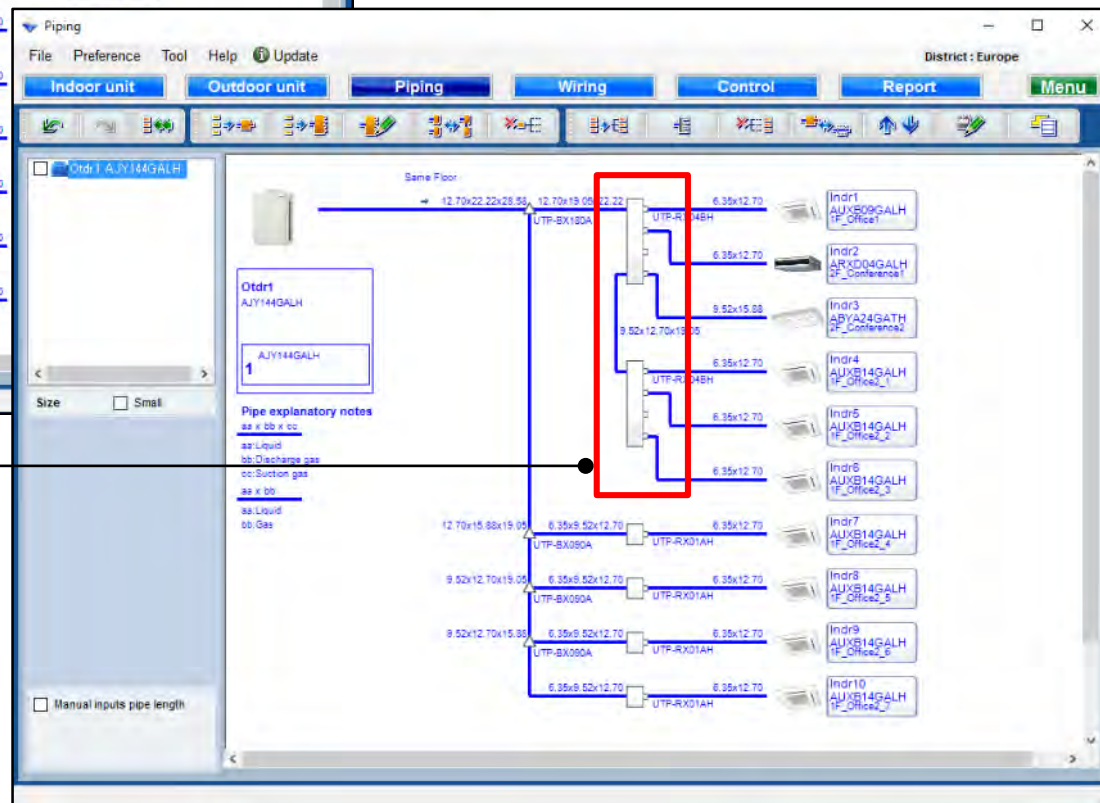
結合RB多功能



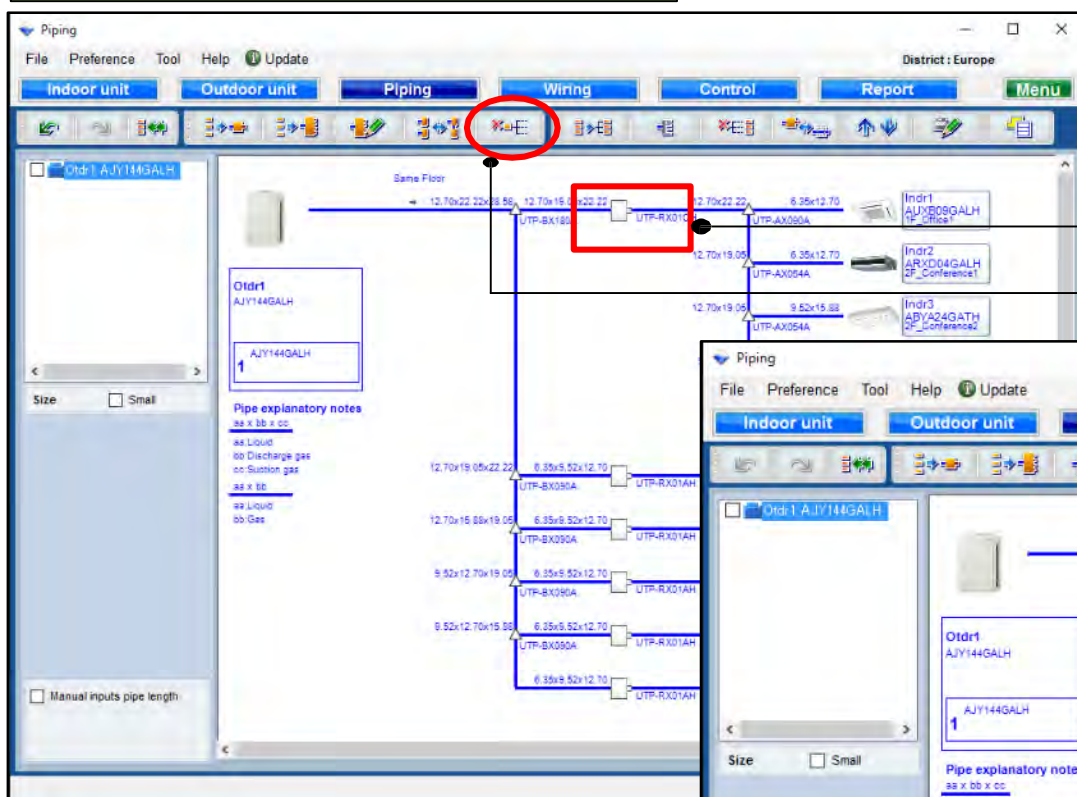
選擇 RB 多聯機種

選擇
“結合 RB 多聯”

將2個RB多組合併成1個組。



釋放組合功能

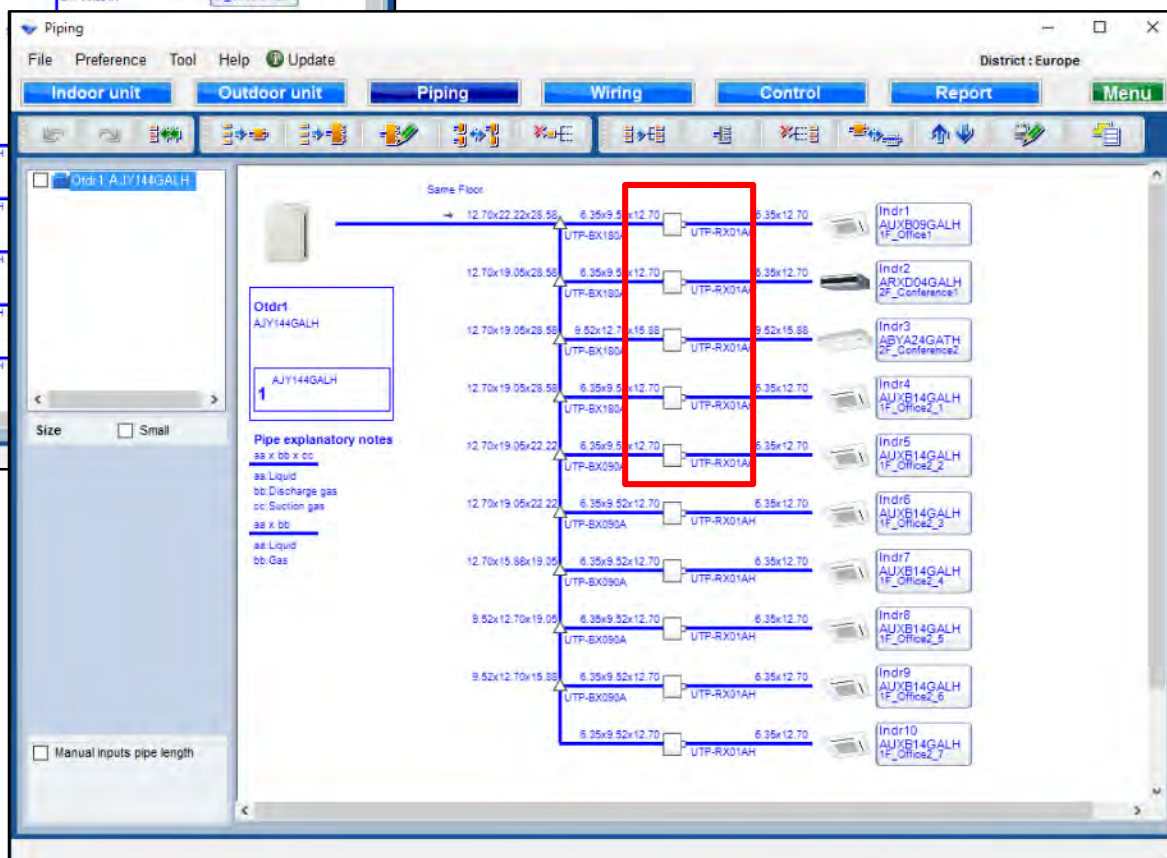


選擇RB機種

選擇“發布組合”

發布組合

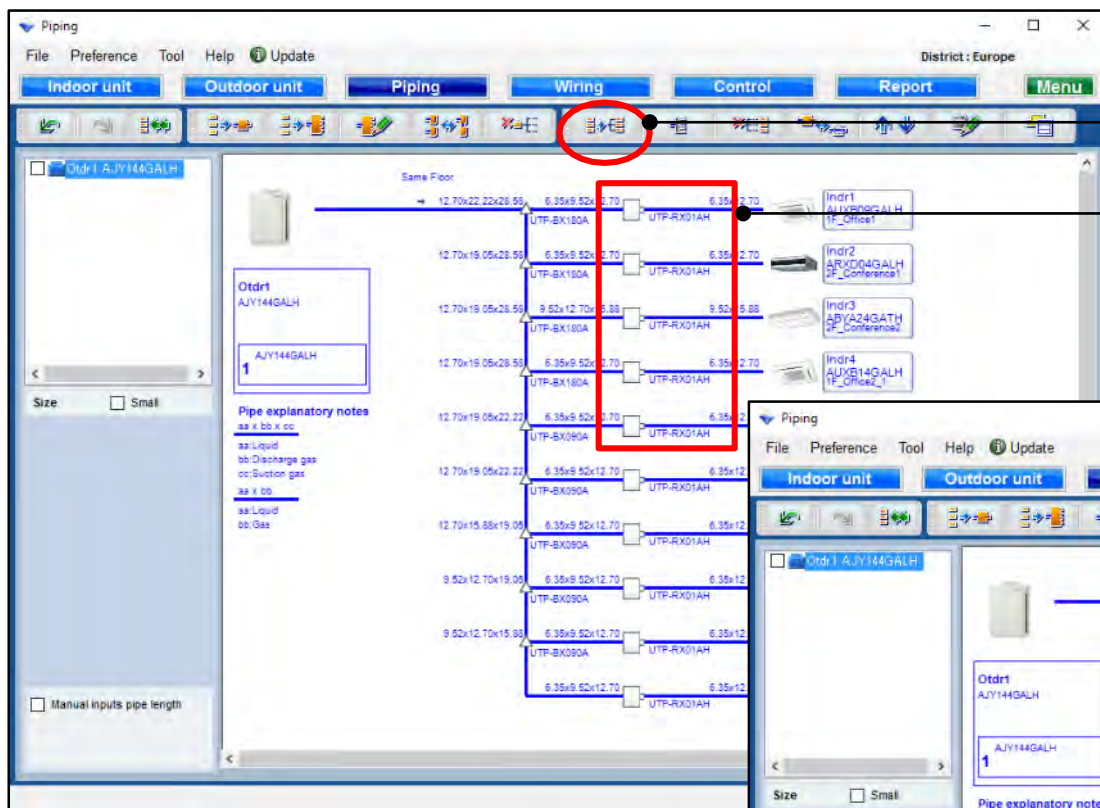
*選定的RB多人或單人組合的所有單位可以被釋放。



管道系統

選機軟體

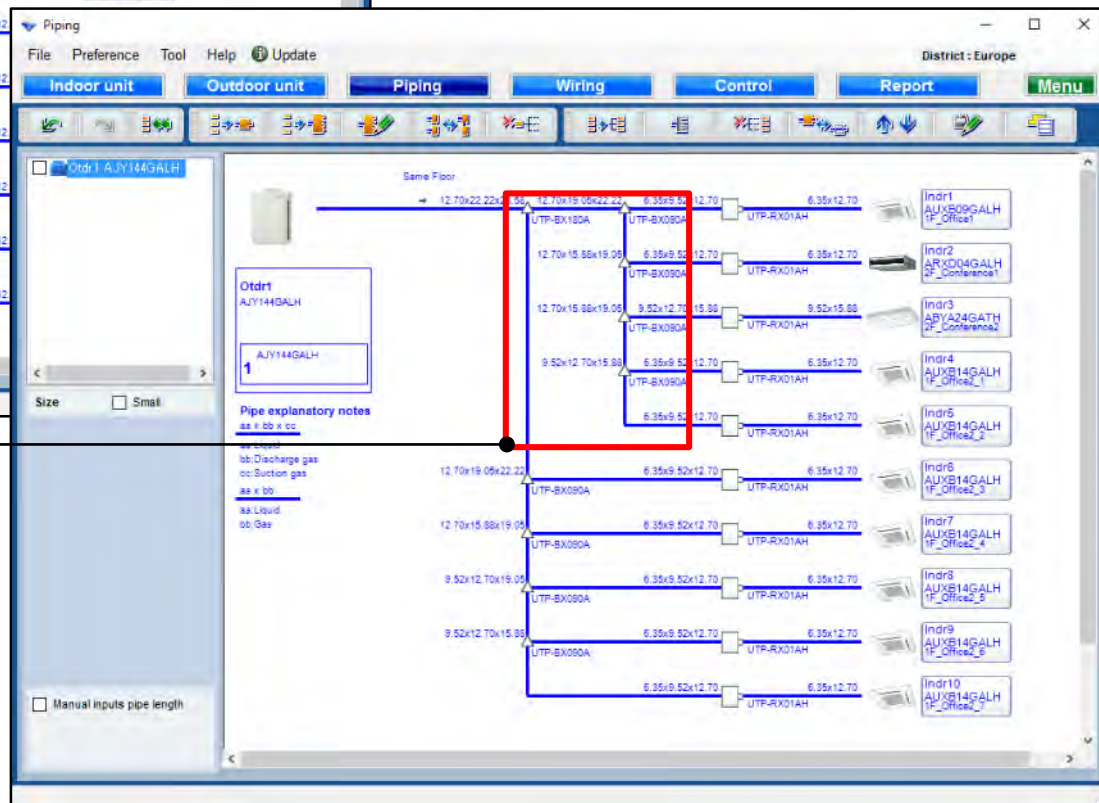
結合室內功能



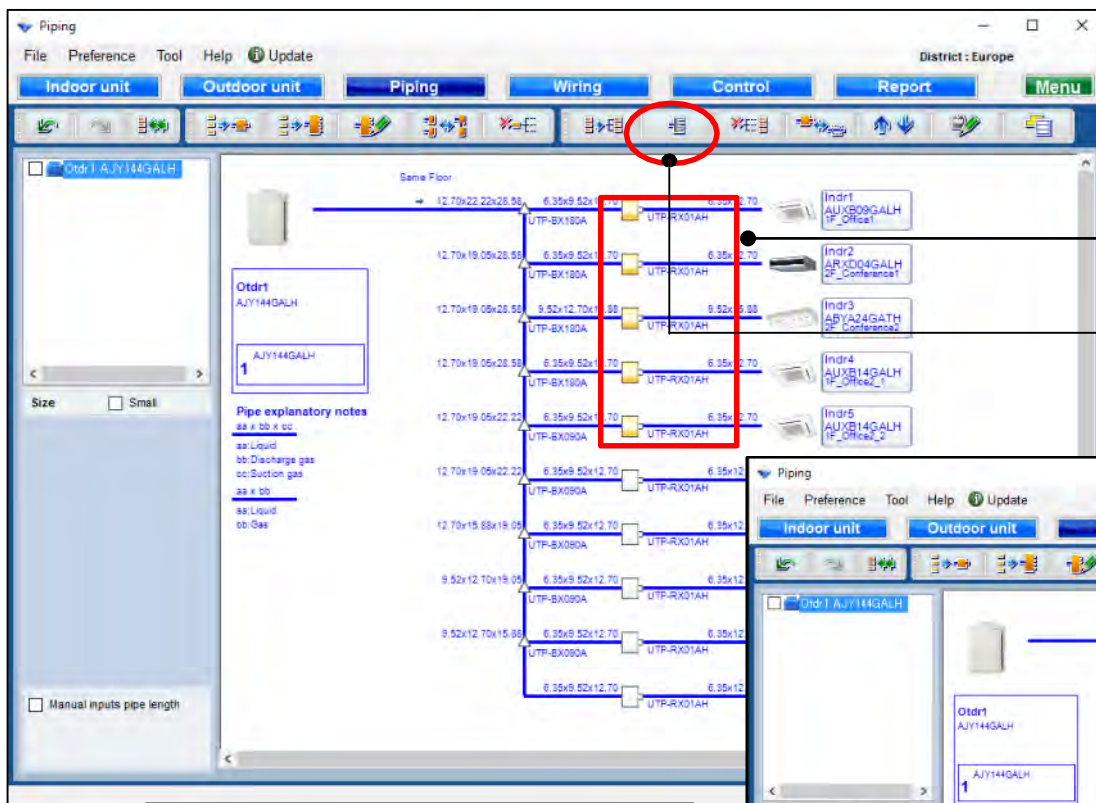
選擇RB機種

選擇“結合室內機”

這部分可以分開。



添加標題功能

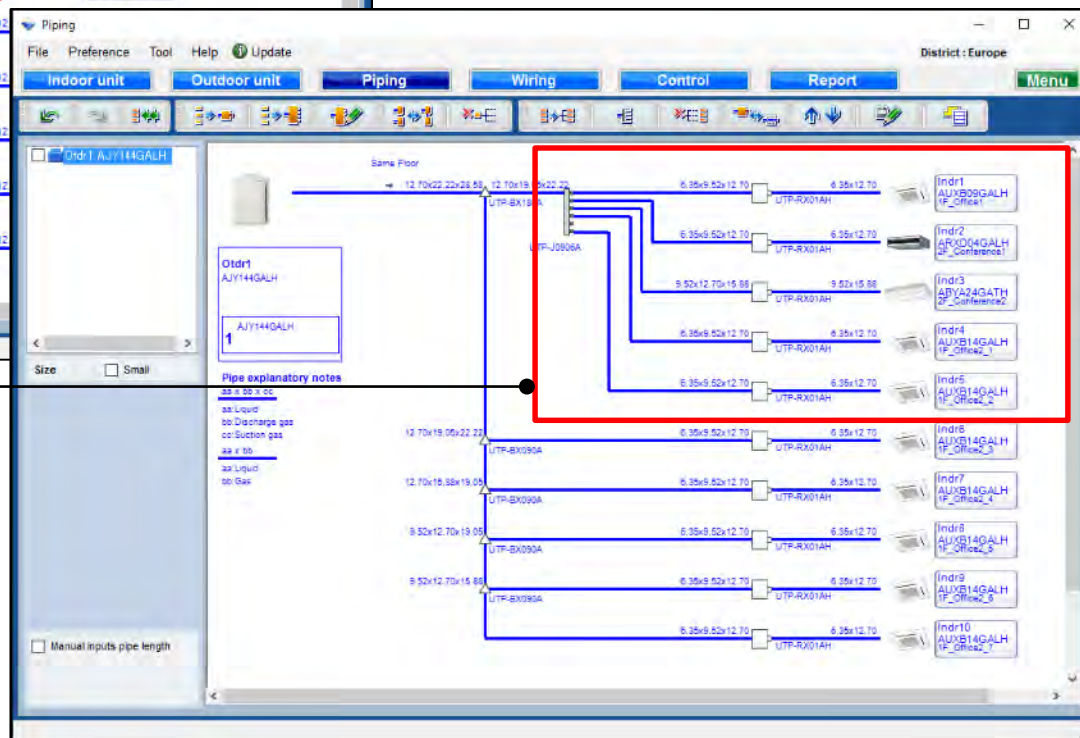


選擇RB 機種



選擇“添加標題”

新增標題組合

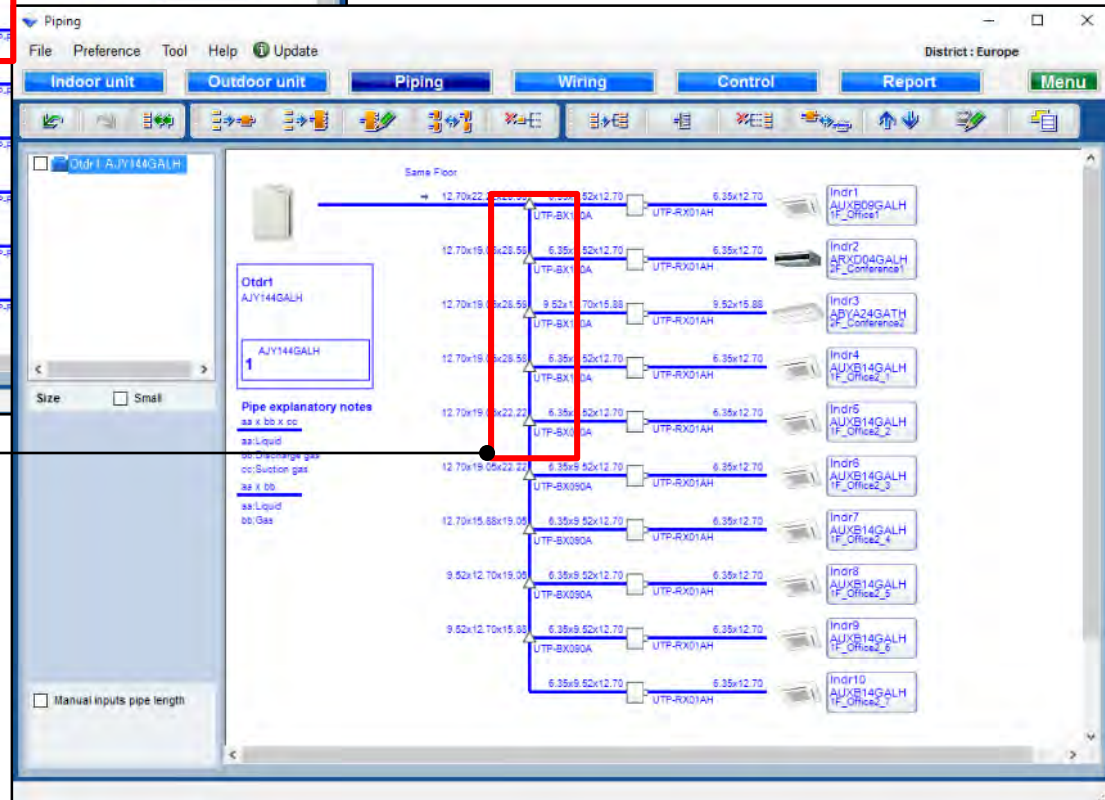
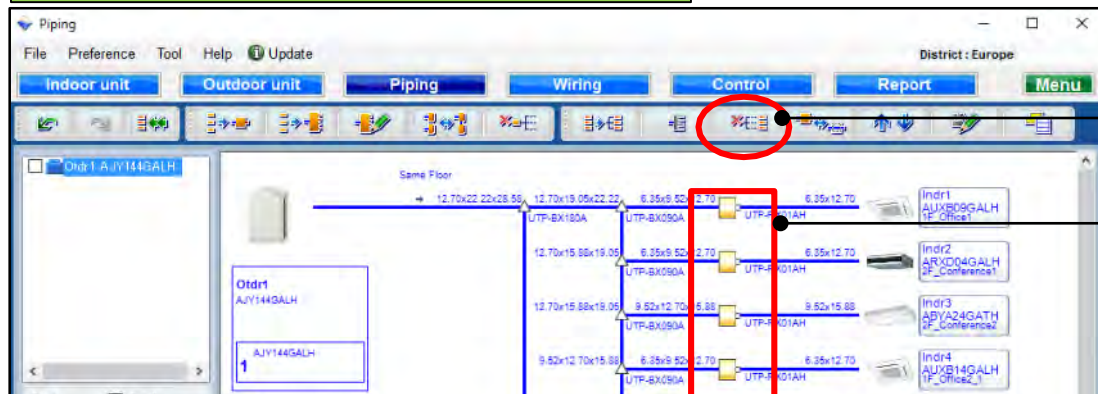


釋放組合功能

選擇 RB 機種

選擇“發布組合”

發佈組合



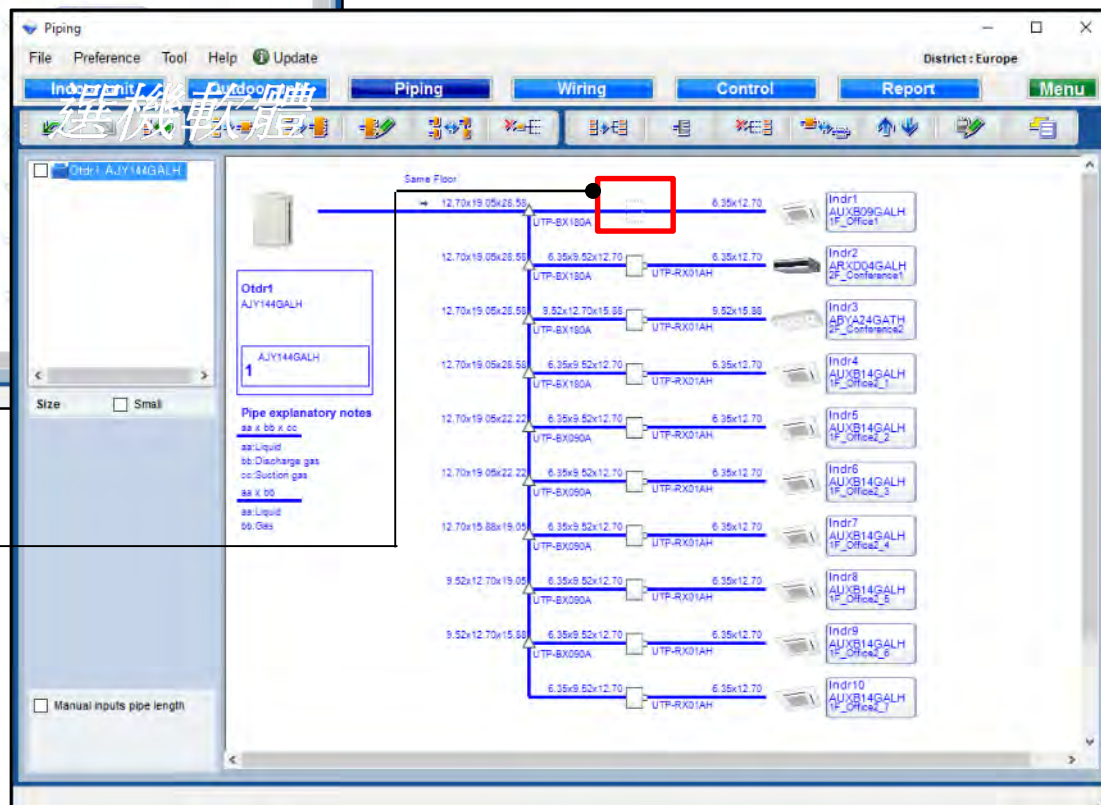
釋放單個RB功能



選擇室內機

選擇
“釋放單個RB
(只冷卻IU)”

所有室內機中所有容量的
50%以下可以更改為僅限
製冷。



上移室內機結合訂單功能

選擇
"上移室內機聯合訂單"

打開室內機移動

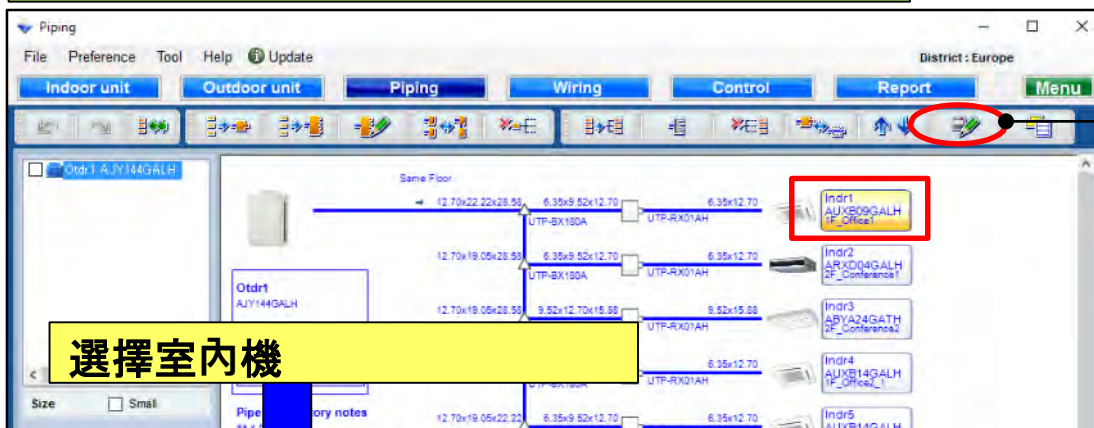
按檢查, 然後按確定

移動Indr3

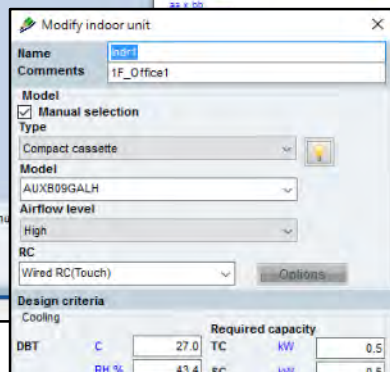
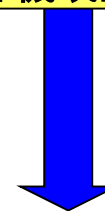
向上移動

移動Indr3到頂端

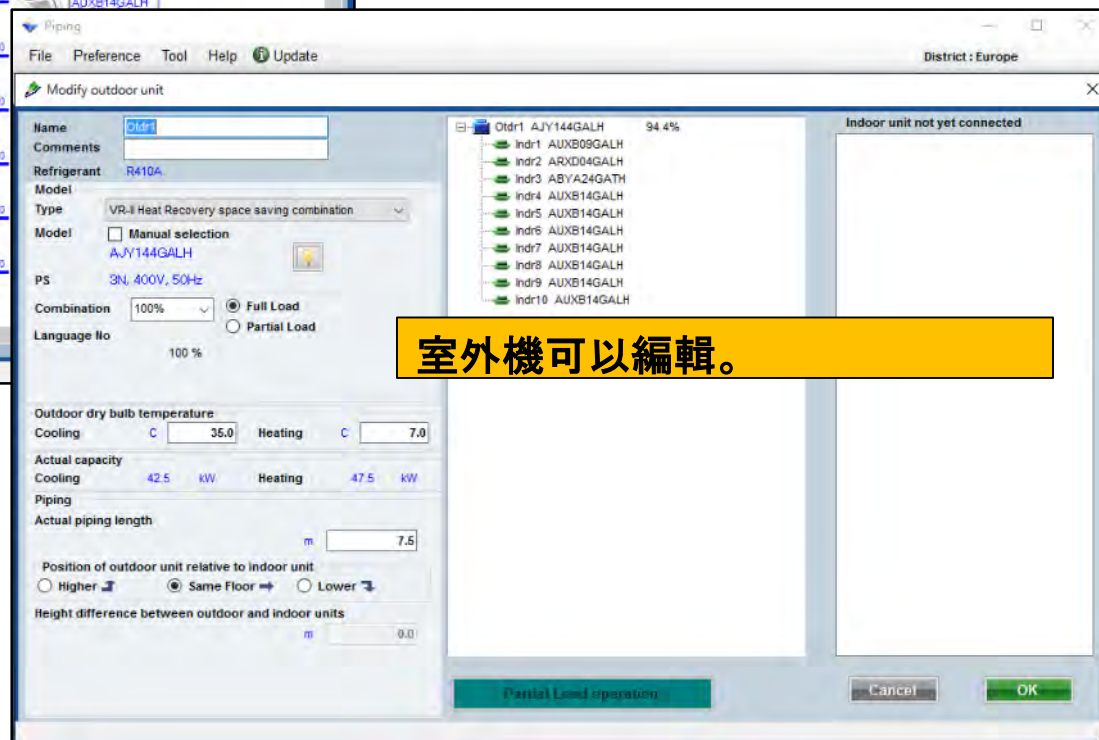
修改室外機或室內機功能



選擇
“修改室外機或室內機”

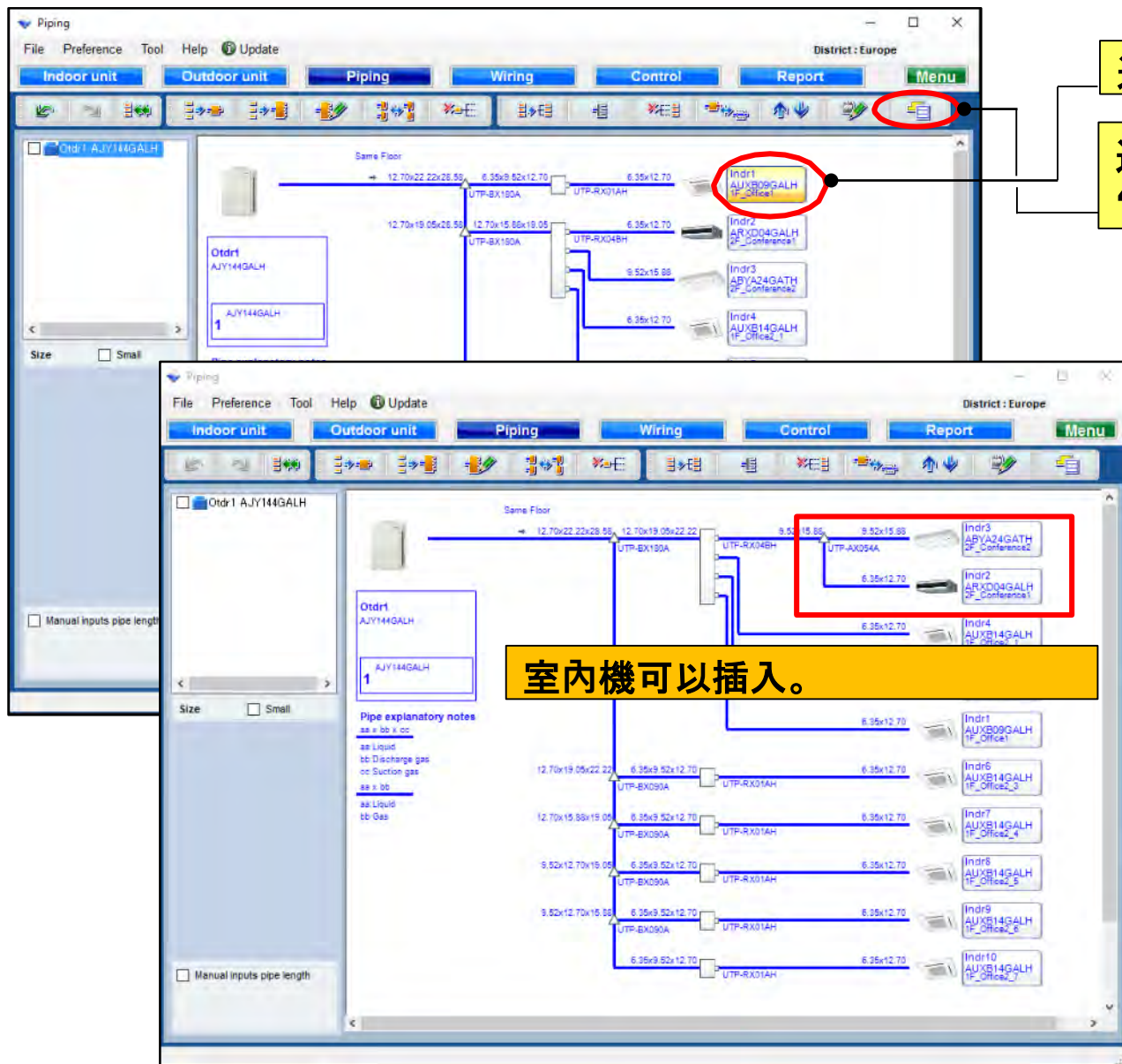


當選擇室內機 按“修改戶外或室內”時，室內機可以編輯。



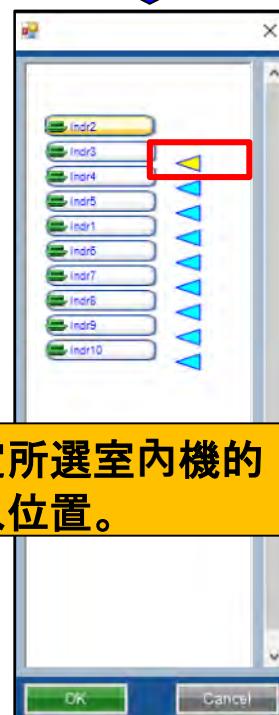
室外機可以編輯。

插入功能



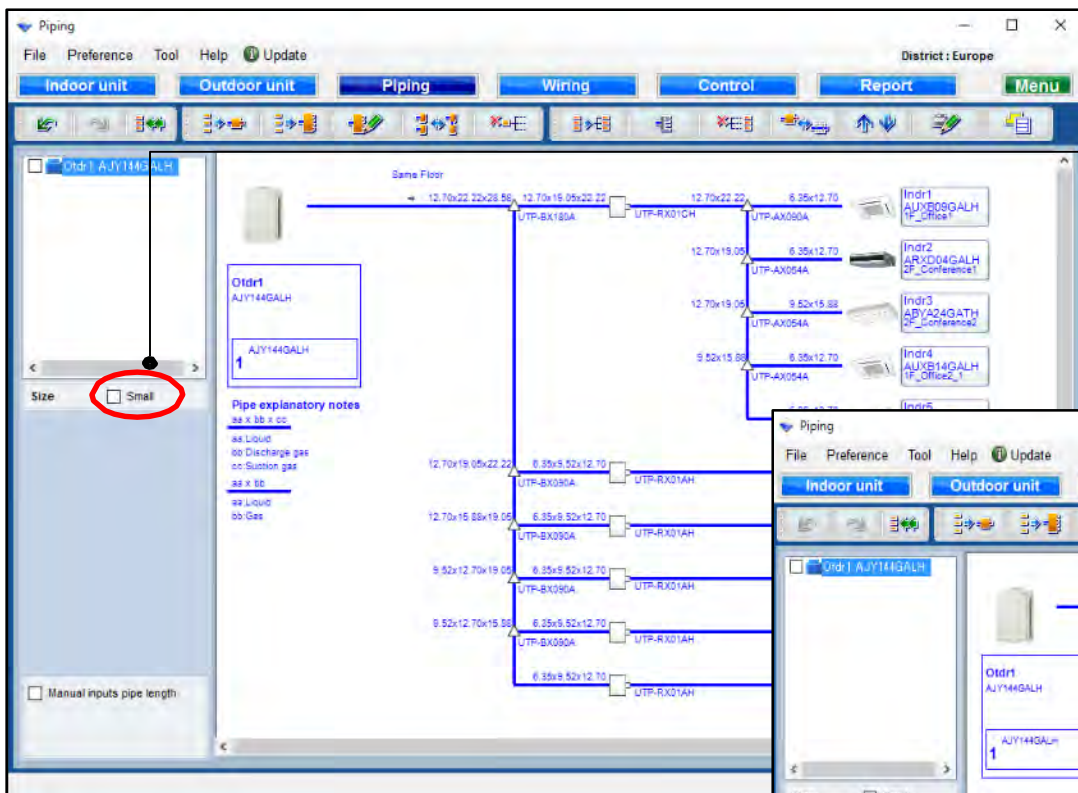
選擇室內機

選擇
“刪除，插入或撤消”



指定所選室內機的
插入位置。

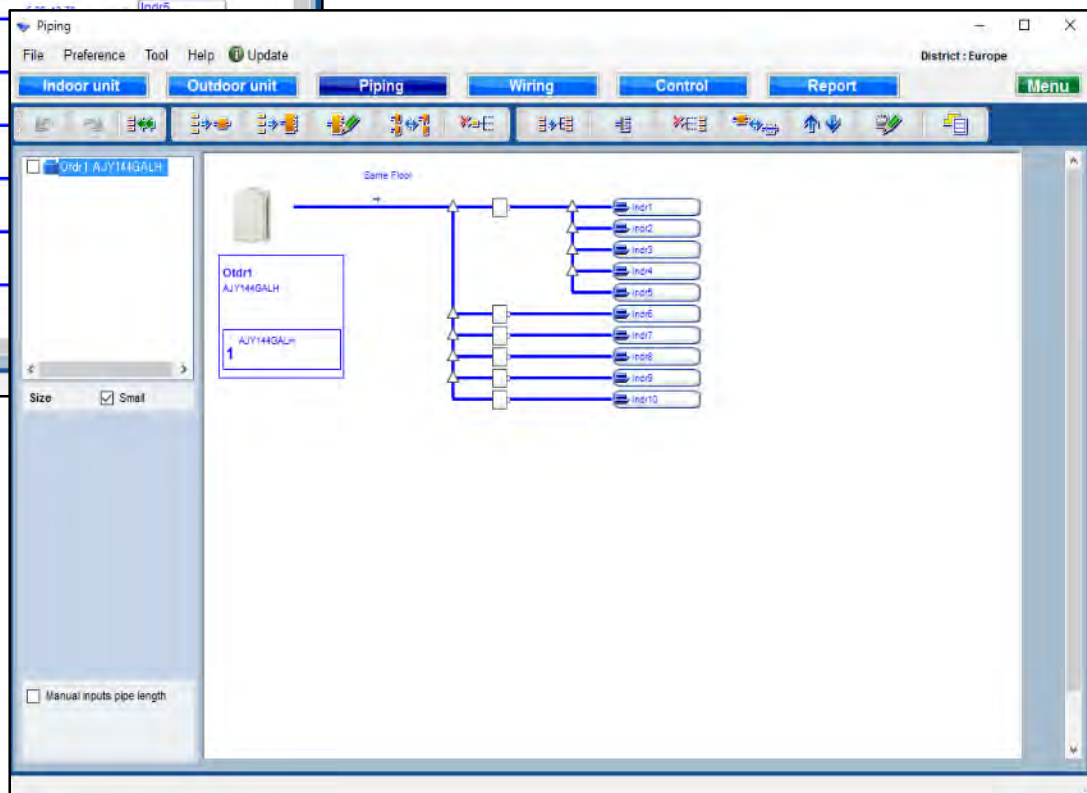
小視圖功能



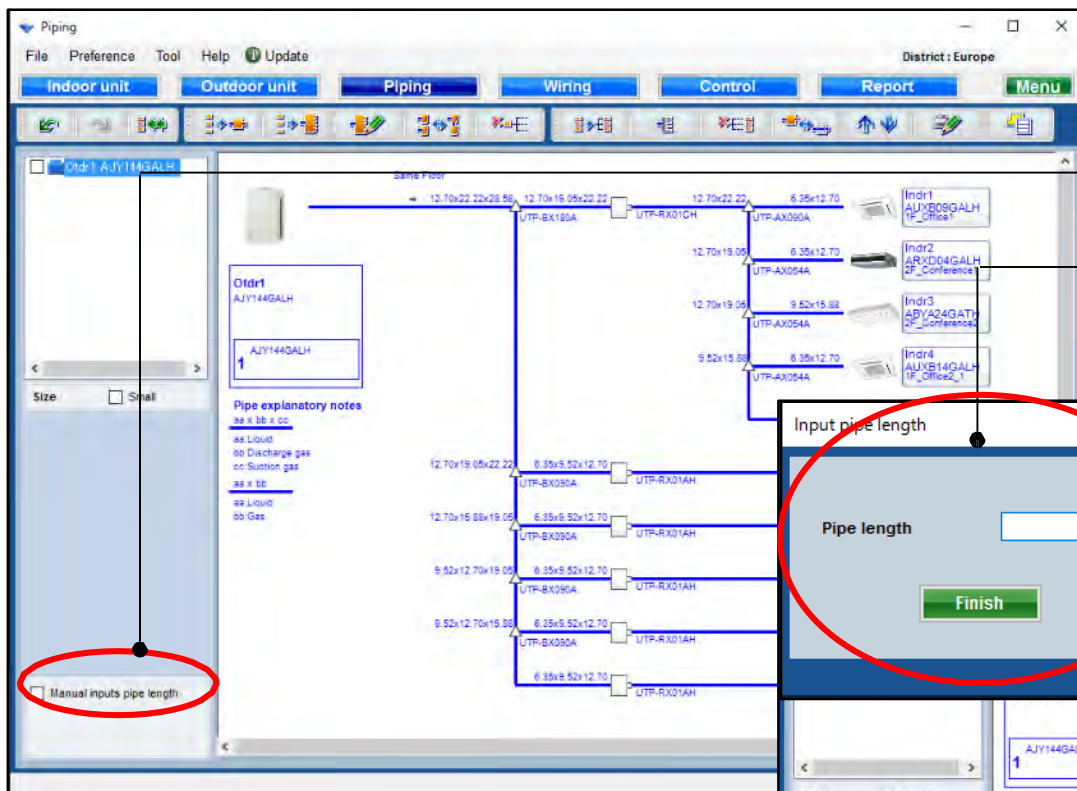
選擇“小”



它變成了小視圖。



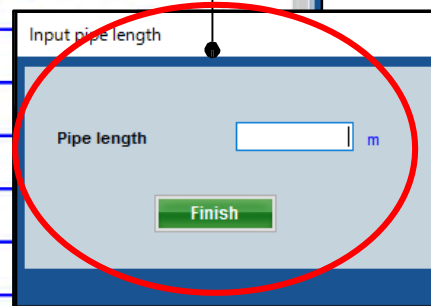
管道長度設定功能(1/4)



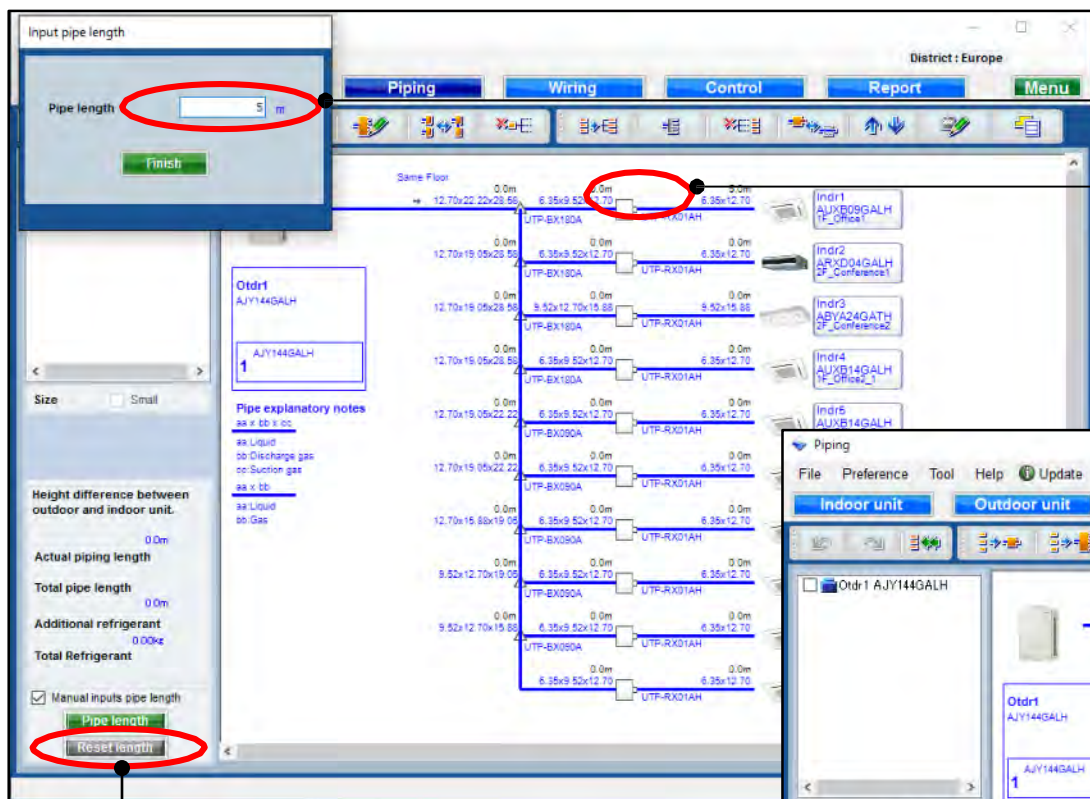
選擇“手動輸入管道長度”



打開管道長度選擇視窗



管道長度設定功能(2/4)

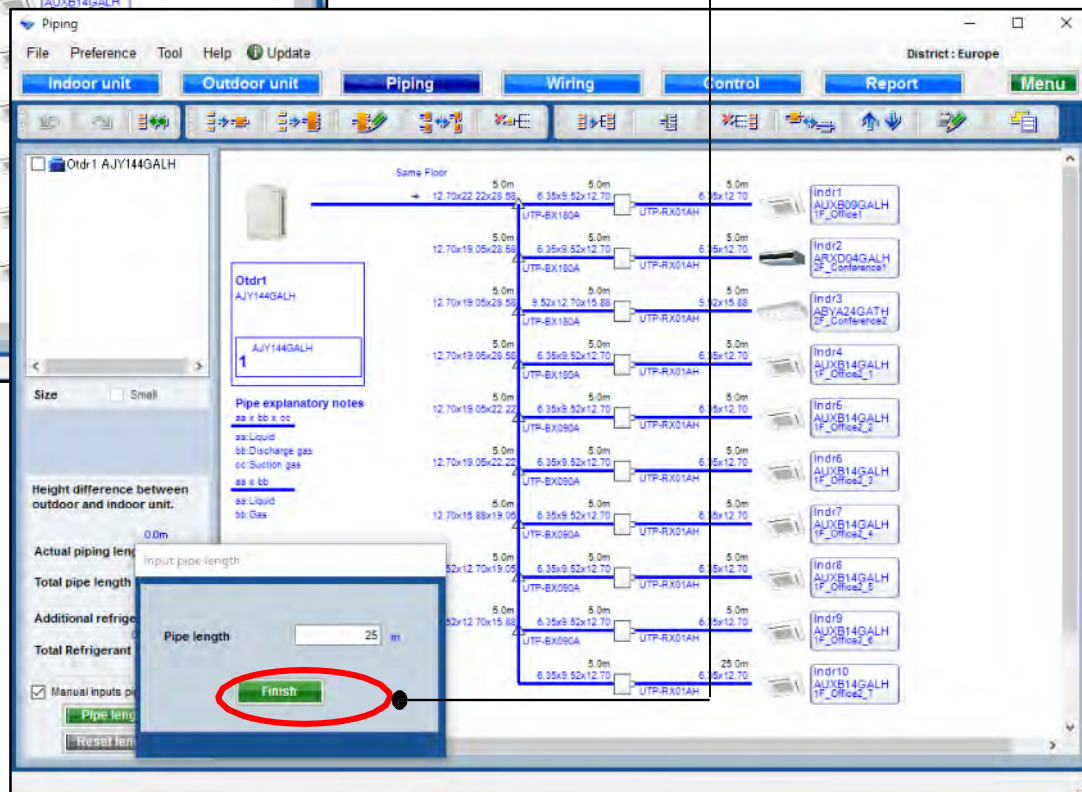


輸入管道長度

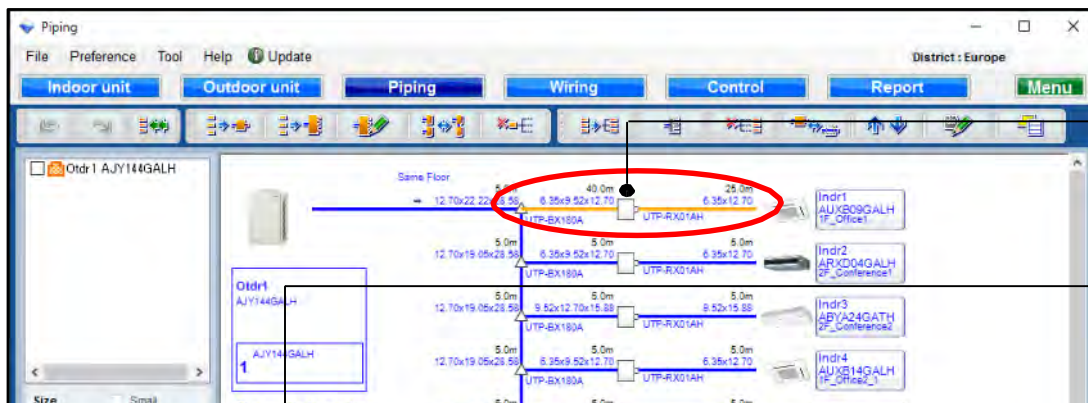
選擇每個管道

全部長度註冊後，選擇“完成”

將所有輸入管道長度重置為初始值

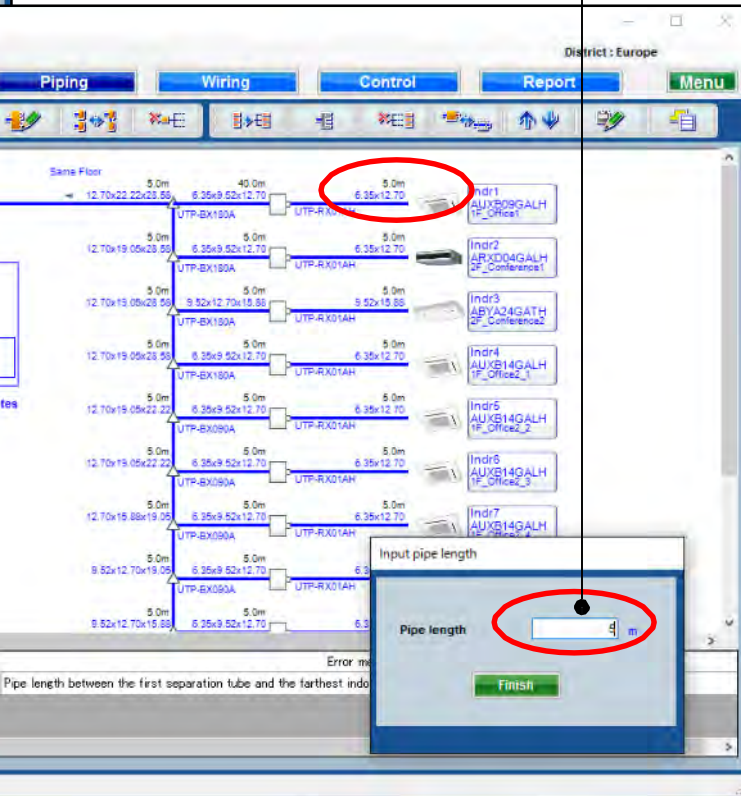
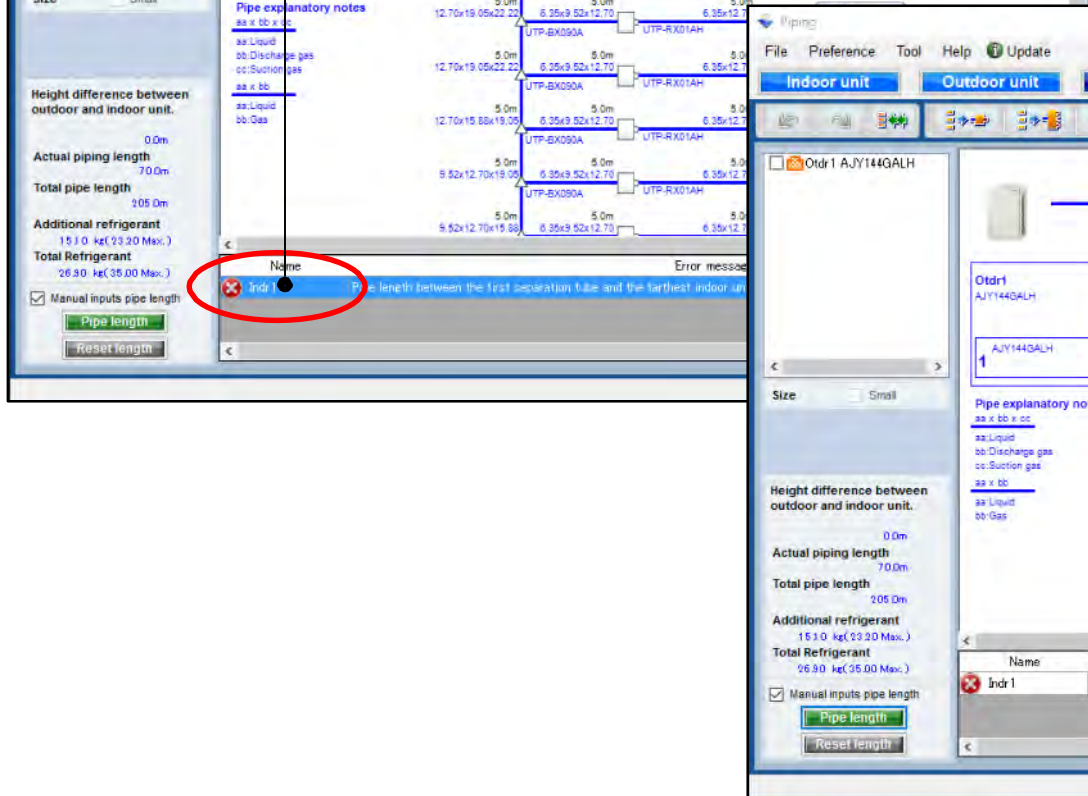


管道長度設定功能(3/4)



當信息未輸入或超出限制時，警告提供錯誤信息。

重複，然後選擇“完成”



管道長度設定功能(4/4)

The screenshot displays the 'Piping' software interface. The main window shows a piping diagram for a 'Same Floor' system. The diagram includes a vertical riser pipe with multiple horizontal branches connecting to indoor units (Indr1 to Indr10). Pipe segments are labeled with dimensions such as 12.70x22.22x28.58, 6.35x9.52x12.70, and 9.52x12.70x15.88. The left sidebar contains a list of outdoor units, with 'Otdr1 AJY144GALH' selected. Below this, the 'Pipe explanatory notes' section shows 'aa: Liquid', 'bb: Discharge gas', and 'cc: Suction gas'. The bottom left panel displays the 'Height difference between outdoor and indoor unit' as 0.0m. The 'Actual piping length' is shown as 60.0m, and the 'Total pipe length' is 185.0m. The 'Additional refrigerant' is 14.68 kg (23.20 Max.), and the 'Total Refrigerant' is 26.48 kg (39.00 Max.). A checkbox for 'Manual inputs pipe length' is checked. Two yellow callout boxes highlight the 'Actual piping length' and 'Additional refrigerant' fields, with text explaining their significance.

實地的管道長度顯示: 聲明和登記的長度

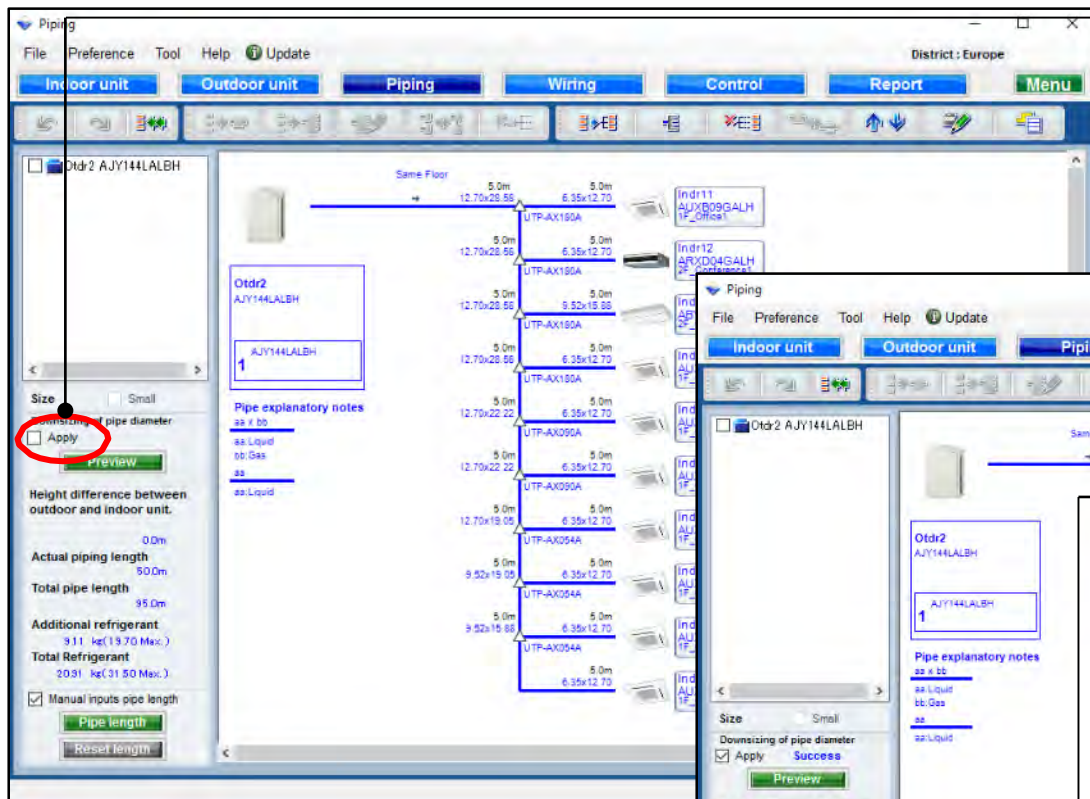
額外的冷媒填充量自動計算並顯示。

管徑功能縮小(1/2)

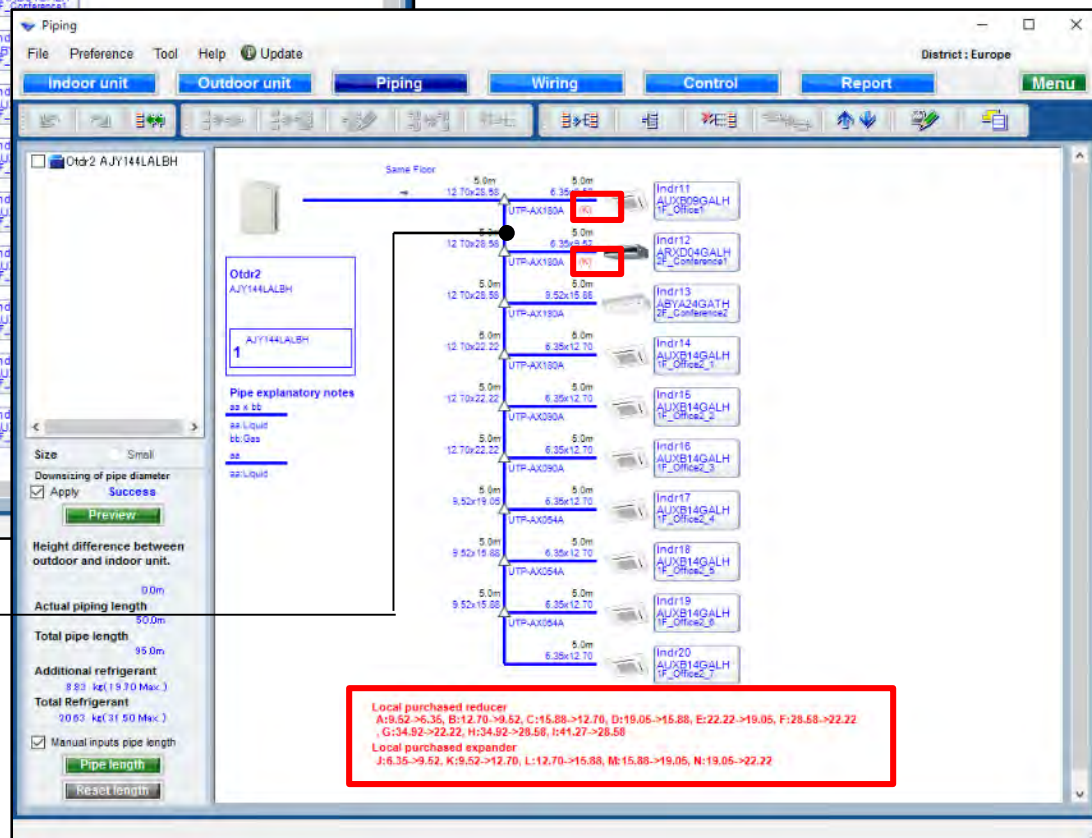
*僅限於目標區域的V-III系列

選擇“應用”

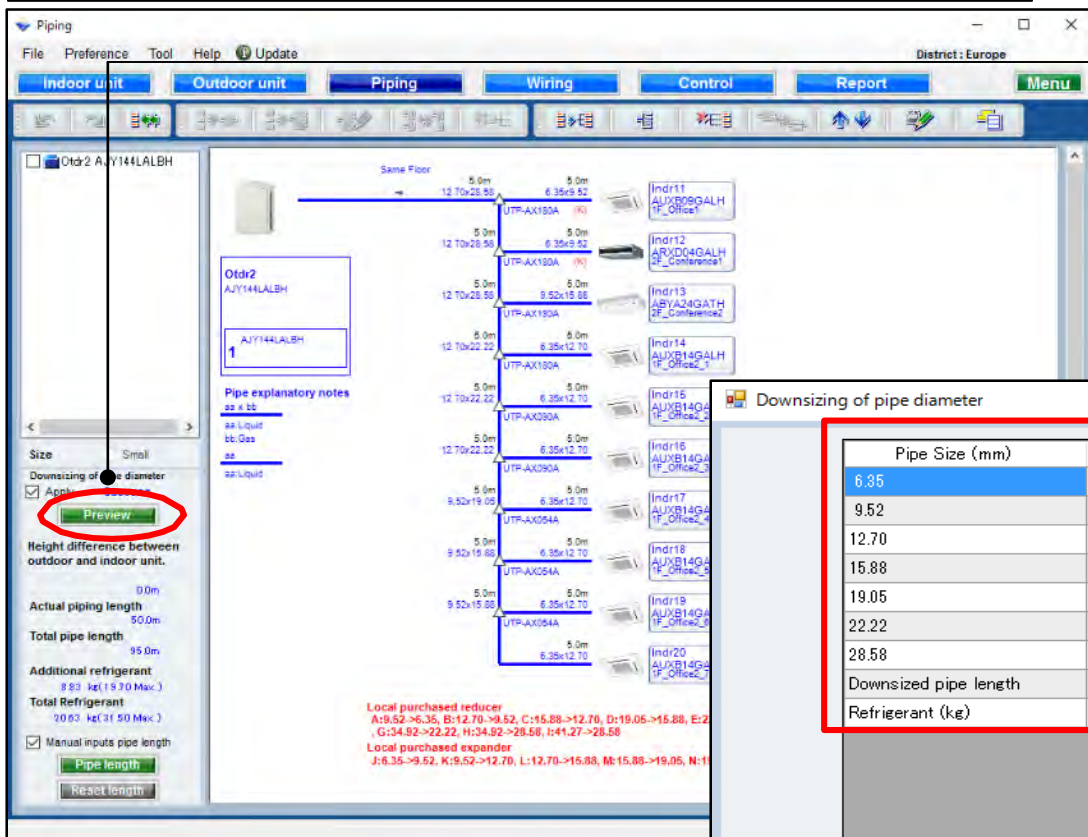
縮小管道直徑



當減少 必要的 訊息顯示



管徑功能縮小(2/2)



選擇“預覽”

顯示“縮小管徑”

顯示管道和冷媒量減小前後的差異。

Downsizing of pipe diameter

Pipe Size (mm)	Normal (m)	Downsizing (m)	Difference (m)
6.35	45.0	45.0	0.0
9.52	15.0	30.0	15.0
12.70	80.0	65.0	-15.0
15.88	10.0	15.0	5.0
19.05	10.0	5.0	-5.0
22.22	10.0	15.0	5.0
28.58	20.0	15.0	-5.0
Downsized pipe length			25.0
Refrigerant (kg)	9.11	8.83	0.28

If you input the lengths of the pipes and their length are based on the following condition, you can downsize the pipe size.

- Between outdoor unit to outdoor unit branch kit ,
Between outdoor unit branch kits or outdoor unit branch kit to first separation tube :
The length between master out door unit and the farthest indoor unit should be 70.0m or less.
- Between separation tubes :
The length between master out door unit and the farthest indoor unit should be 120.0m or less,
and the length between the first separation tube and the farthest indoor unit should be 60.0m or less.
- Between separation tube to indoor unit :