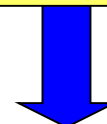
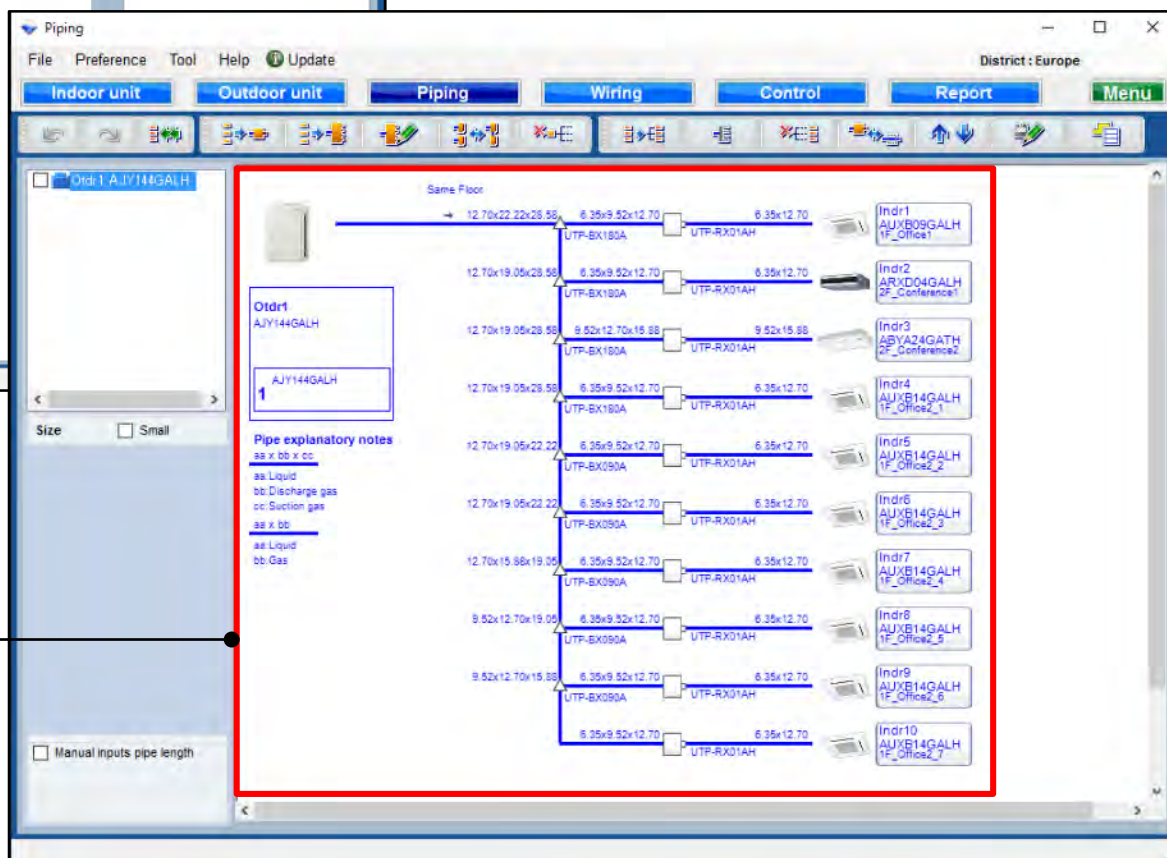


Izaberi “cevovod”

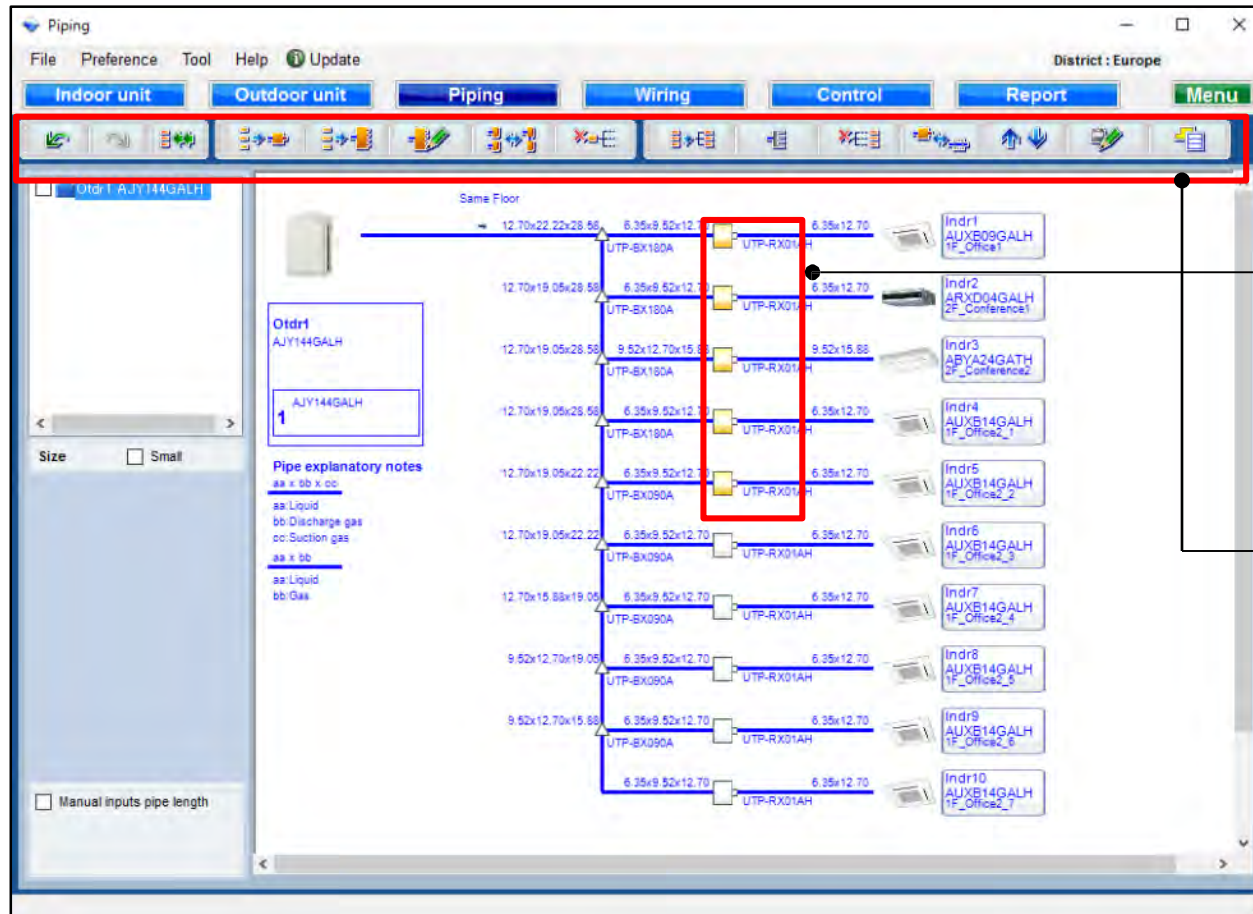


Prikaz kreiranog sistema cevovoda

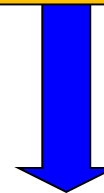


Prokazani su precnik cevi, naziv modela spoljašnje jedinice, inutrašnje jedinice i racve.

## Za povrat toplote

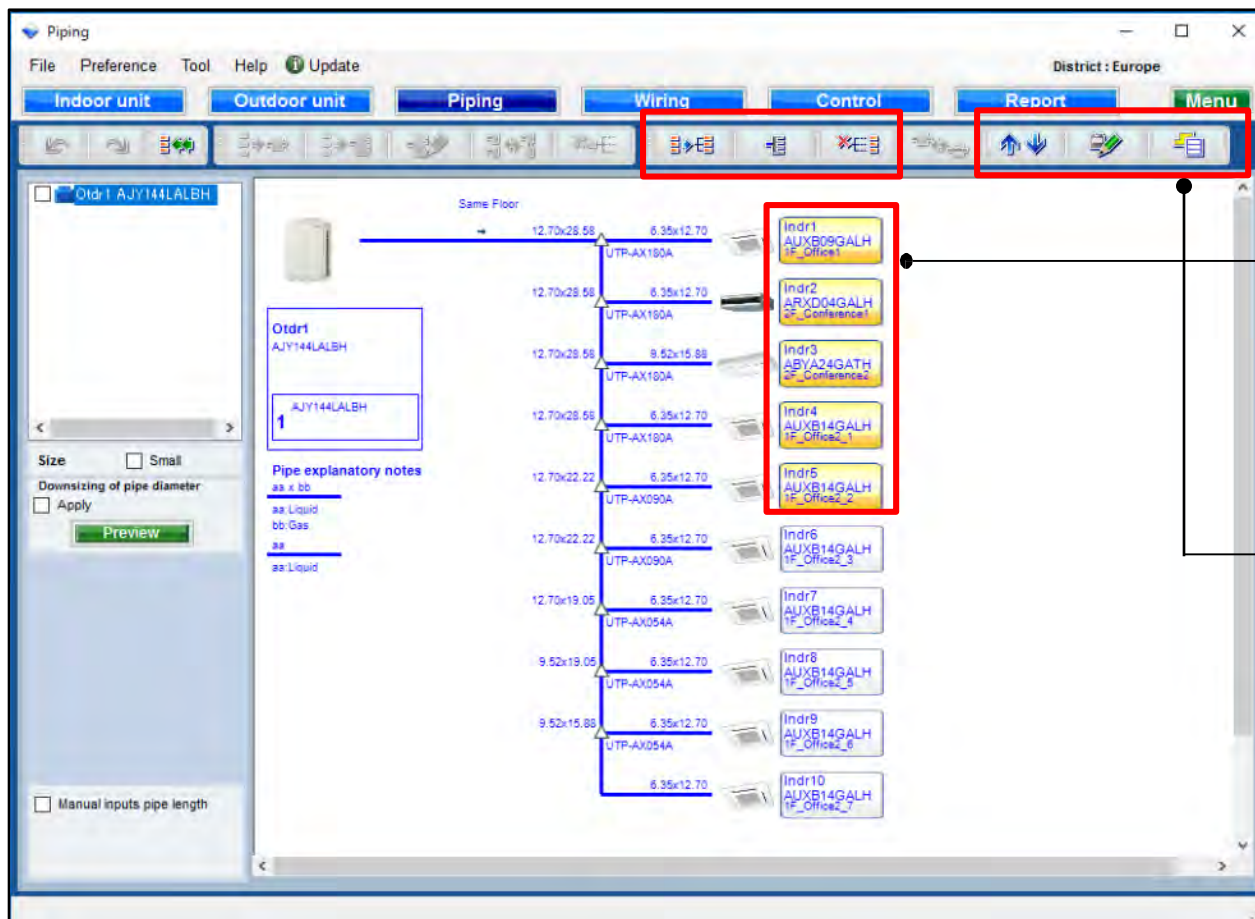


Izaberite za povrat toplote RB Unit.

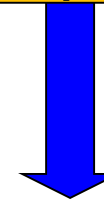


Izaberite opciju za izmenu

## Za heat recovery



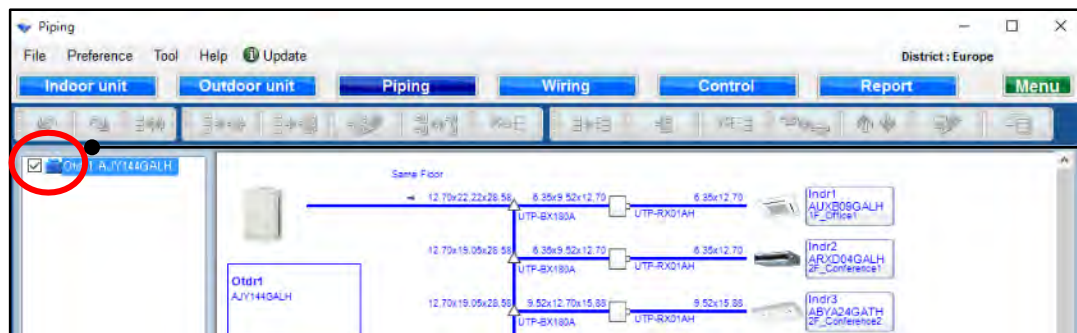
Izaberite unutrašnju  
jedinicu za toplotnu pumpu.



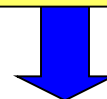
Izaberite opcije za izmenu,  
za toplotne pumpe opcije  
su



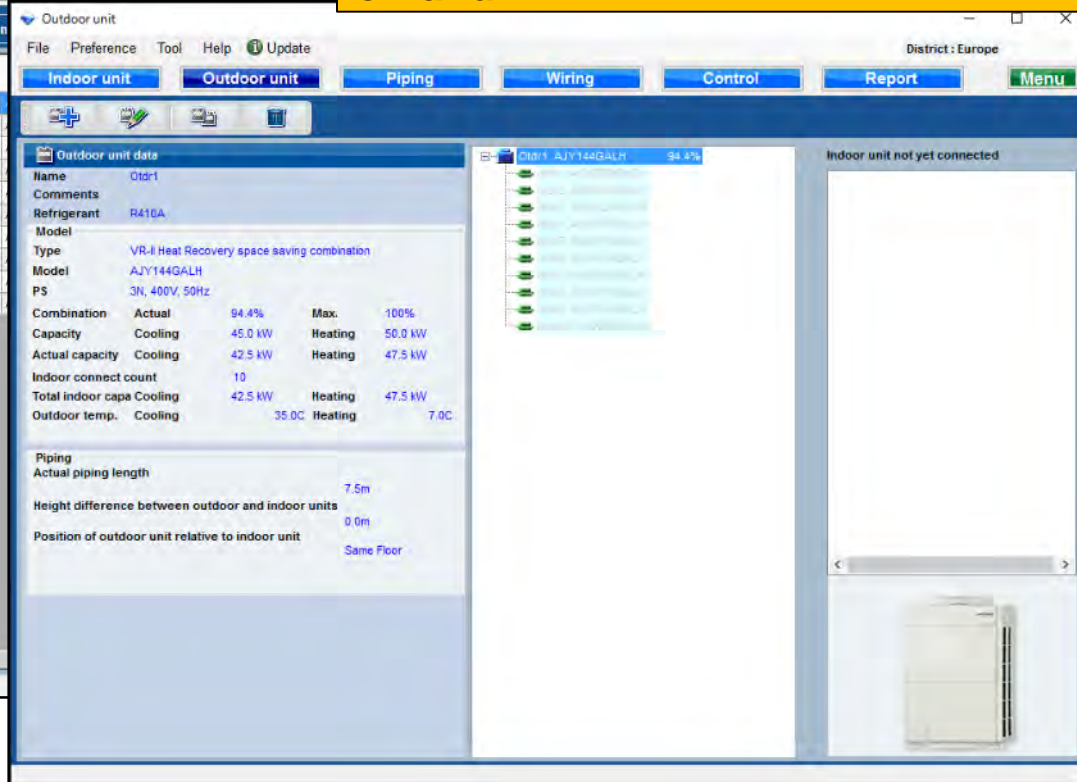
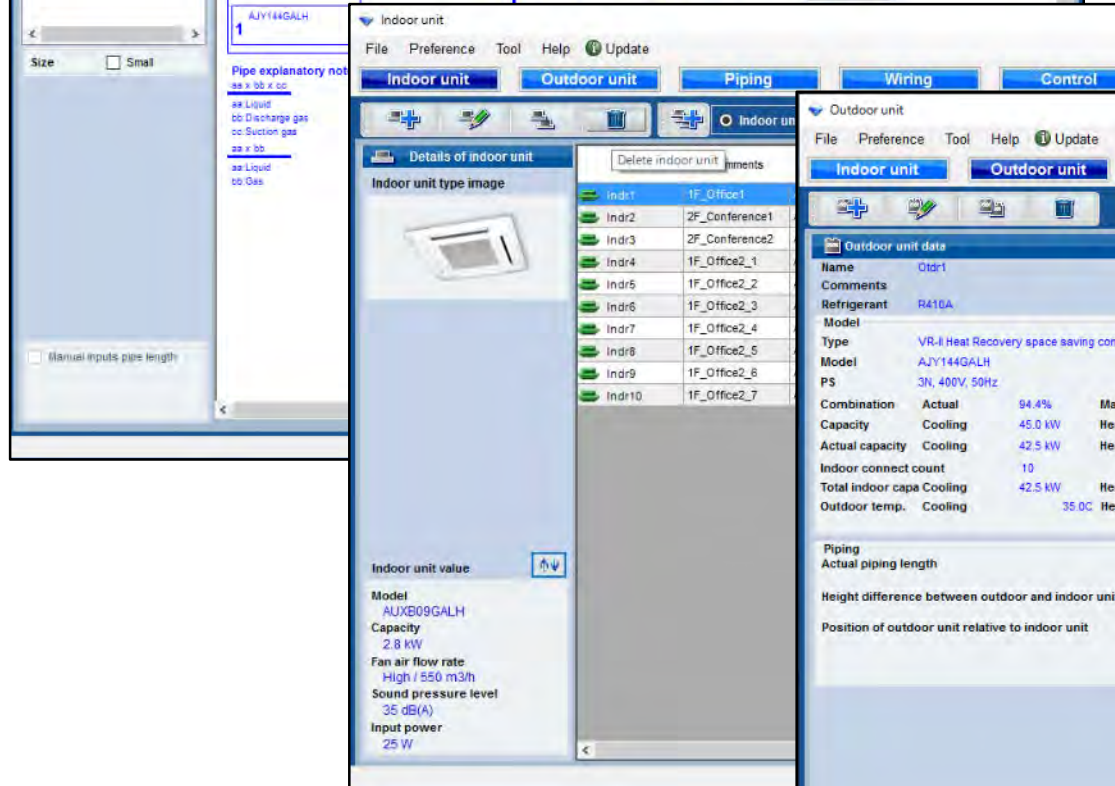
## Funkcionisanje rashladnog fluida u sistemu



Proverite rashladni sistem.



Izabrani rashladni sistem se ne može uređivati na svakom ekranu.



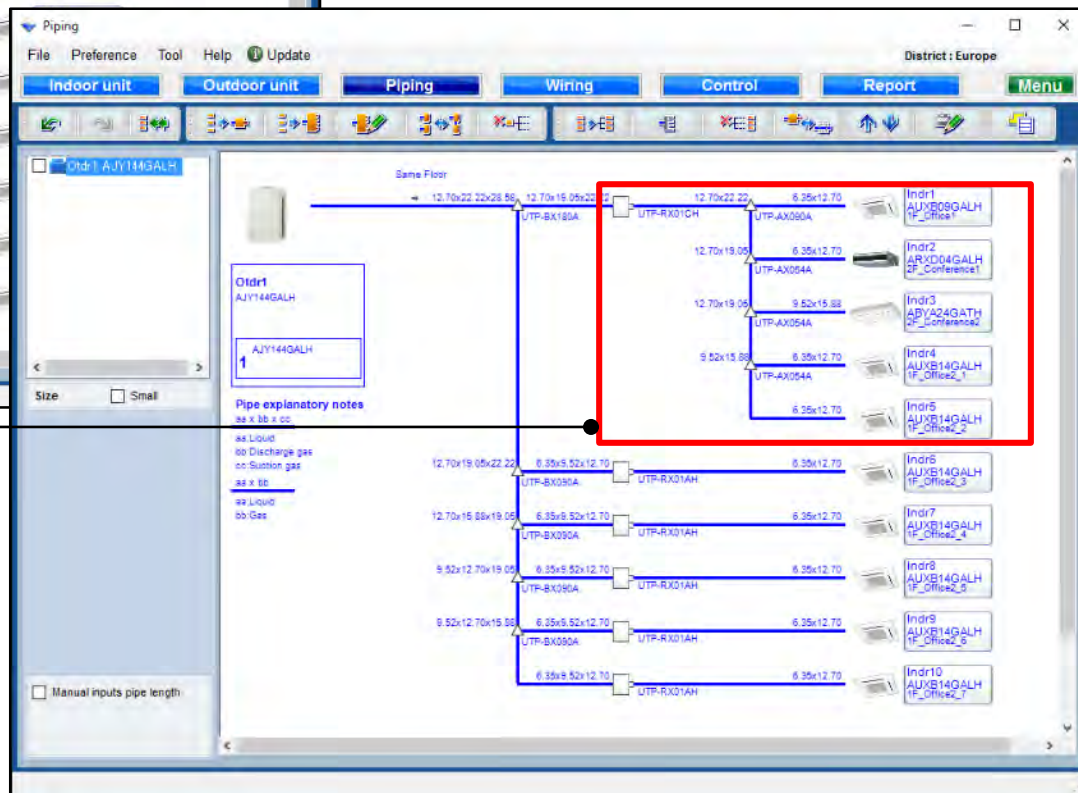
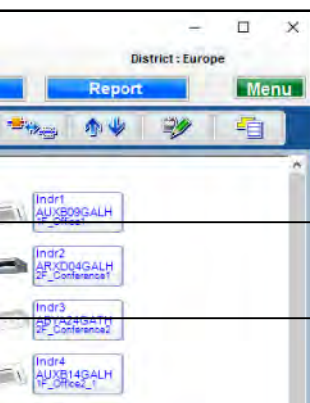
## RB Pojedinačne finkcije

Izaberi RB jedinice



Izaberi "RB Single"

Izbor unutrašnjih



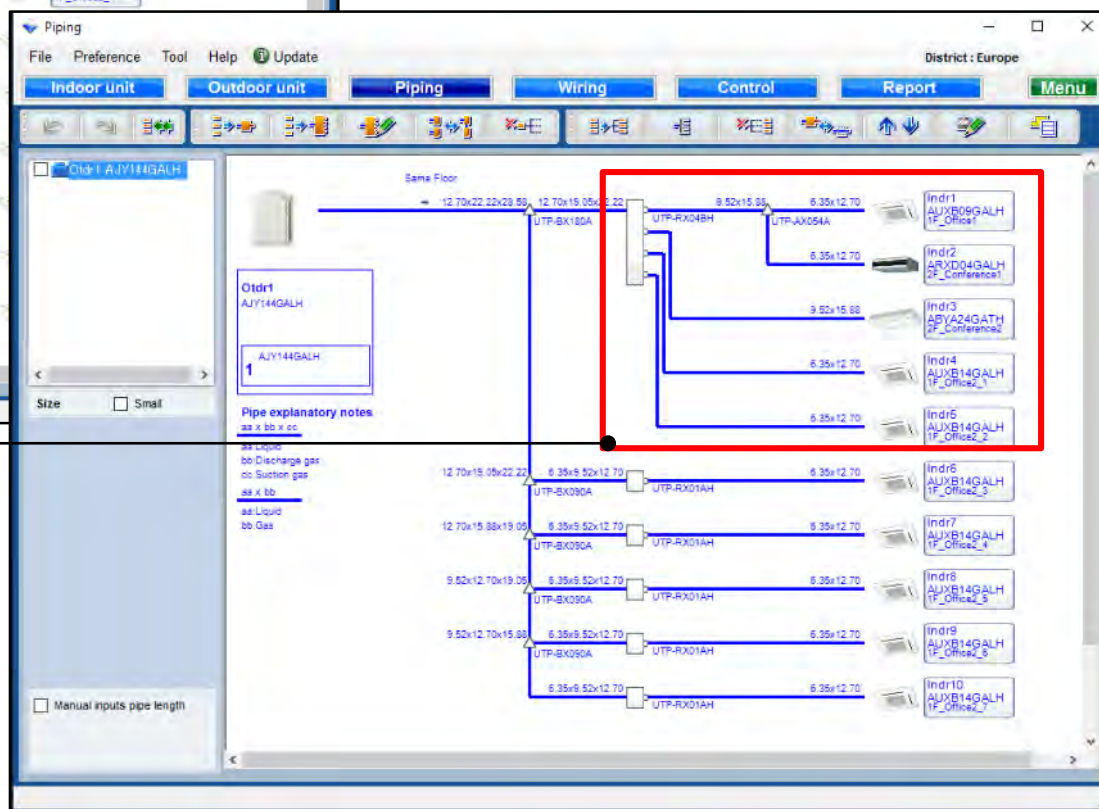
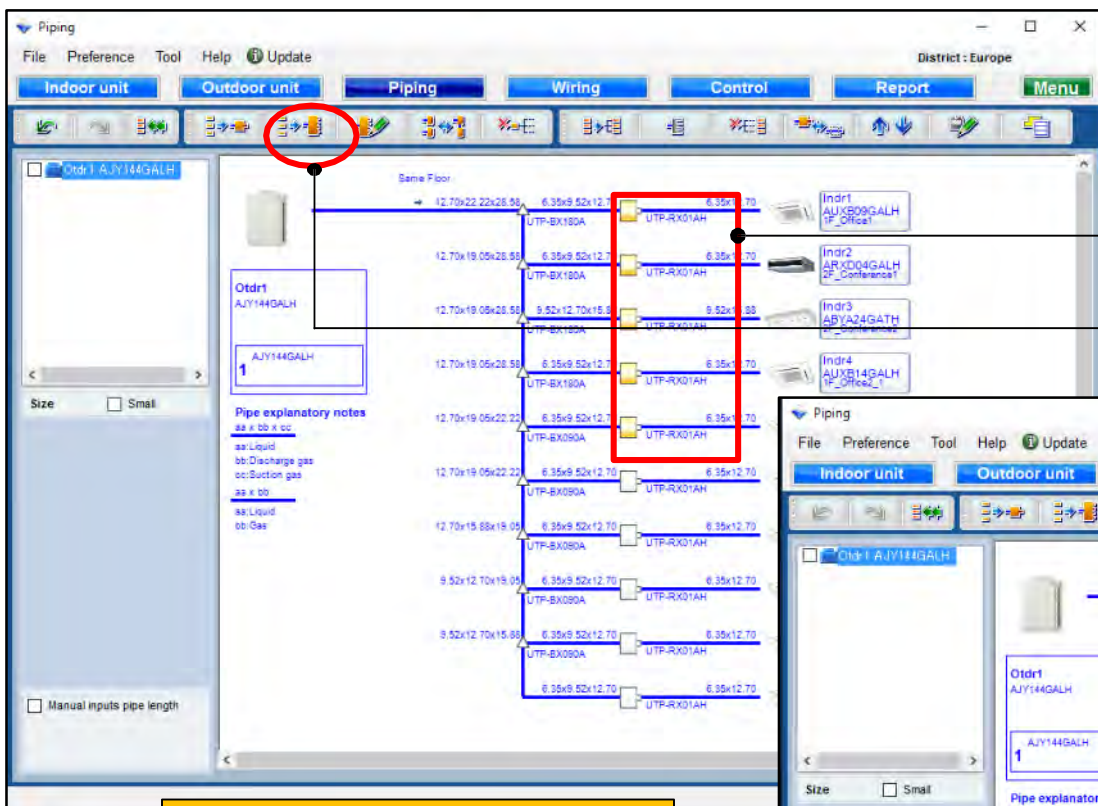
## RB multi funkcije

Izaberi RB jedinicu



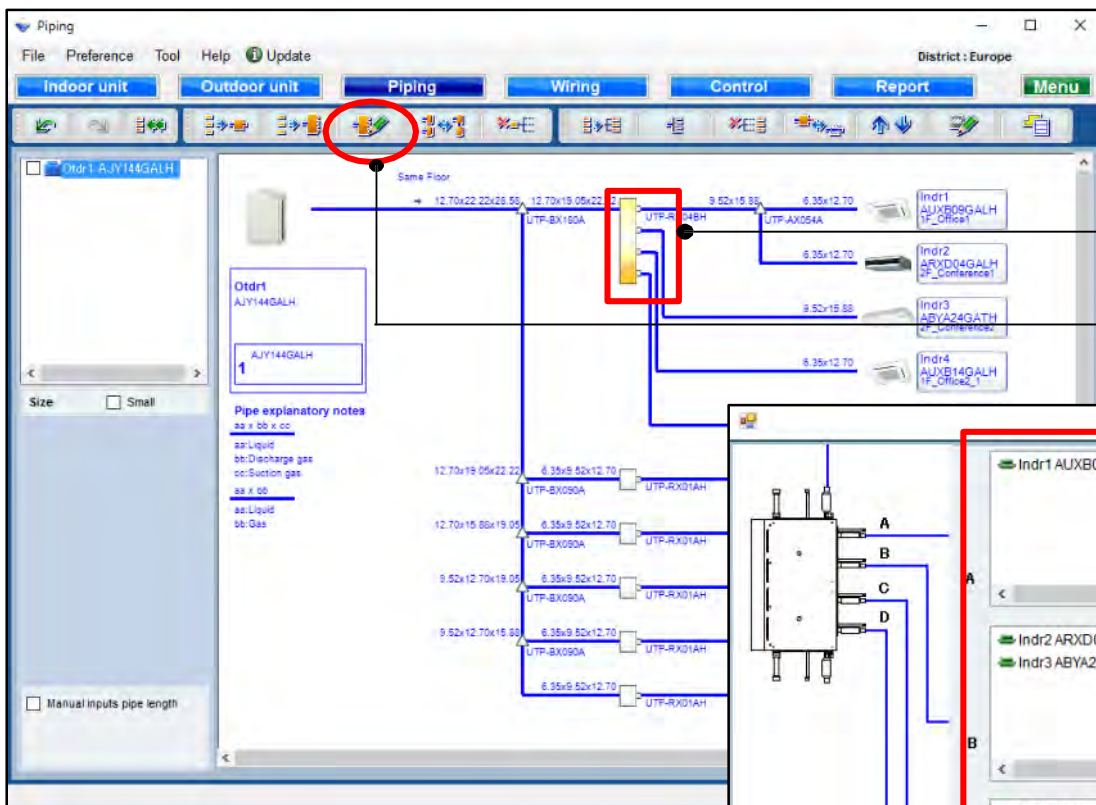
Izaberi “RB multi”

Izbor unutrašnjih





## RB multi slozena konfiguracija

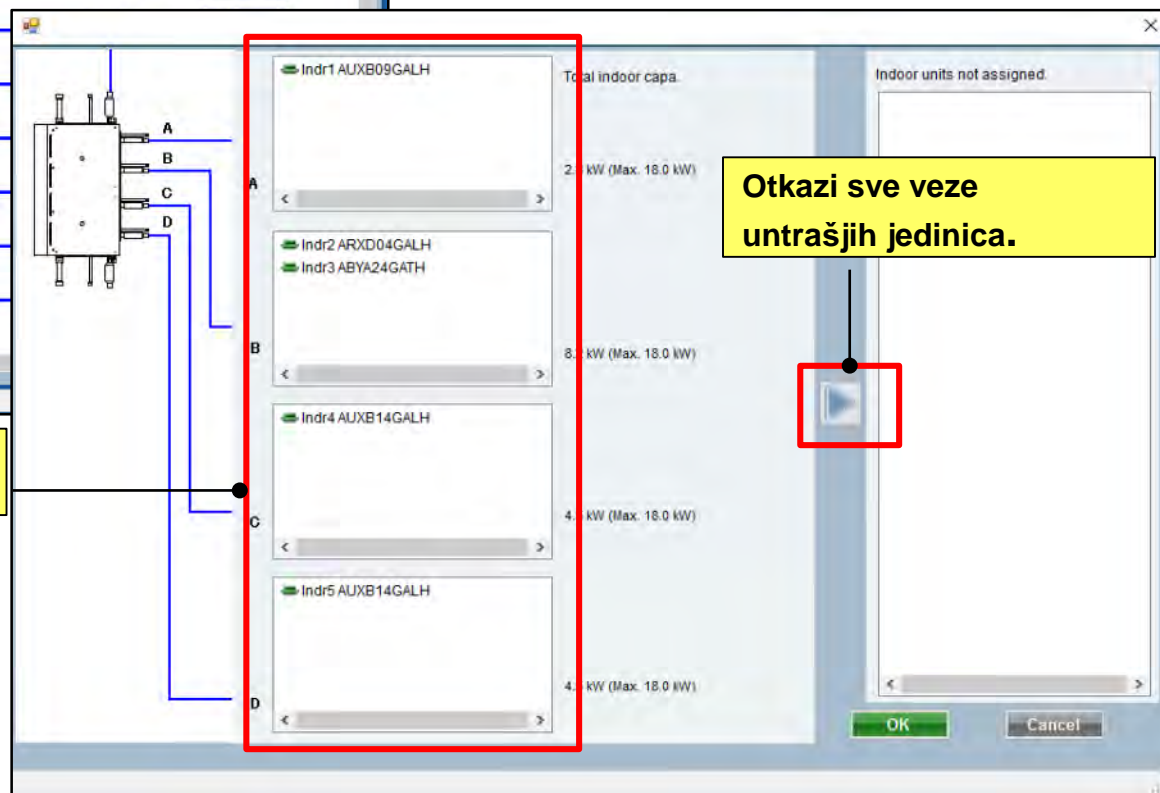


Izaberi RB multi jedinicu

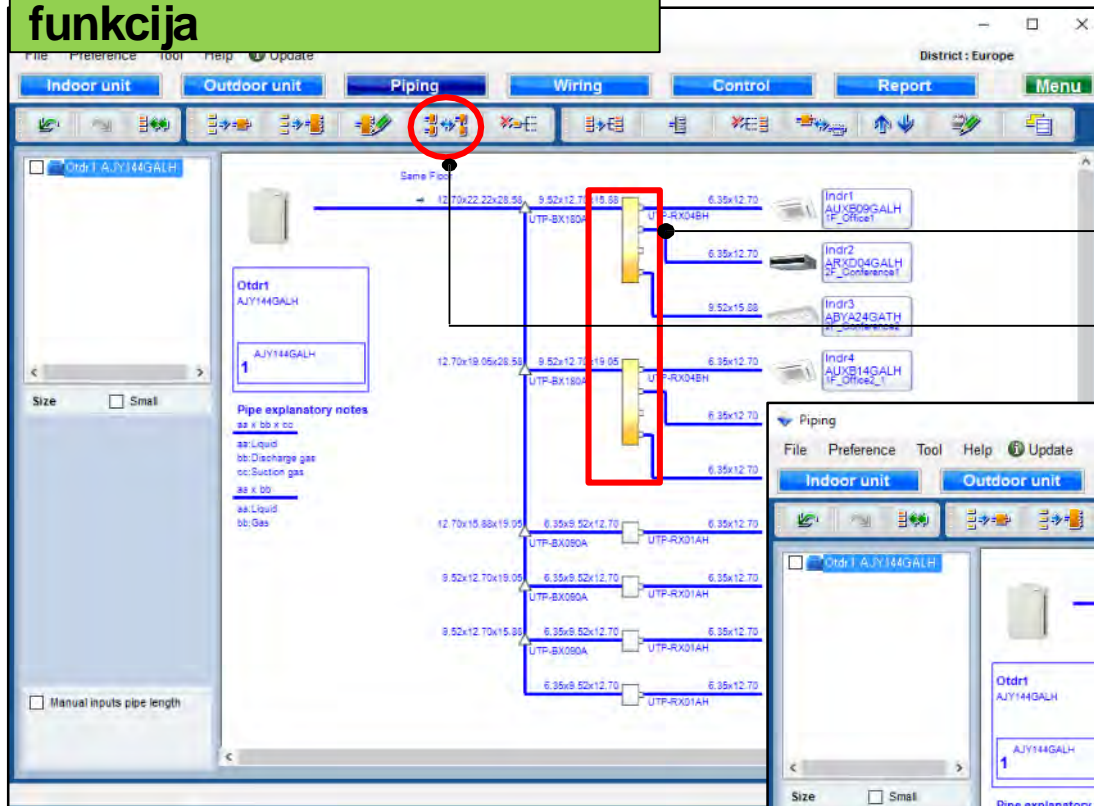
Izaberi  
"RB multi konfiguraciju"

Može da se izmeni način povezivanja unutrašnjih jedinica kada je RB multi.

Otkazi sve veze unutrašnjih jedinica.



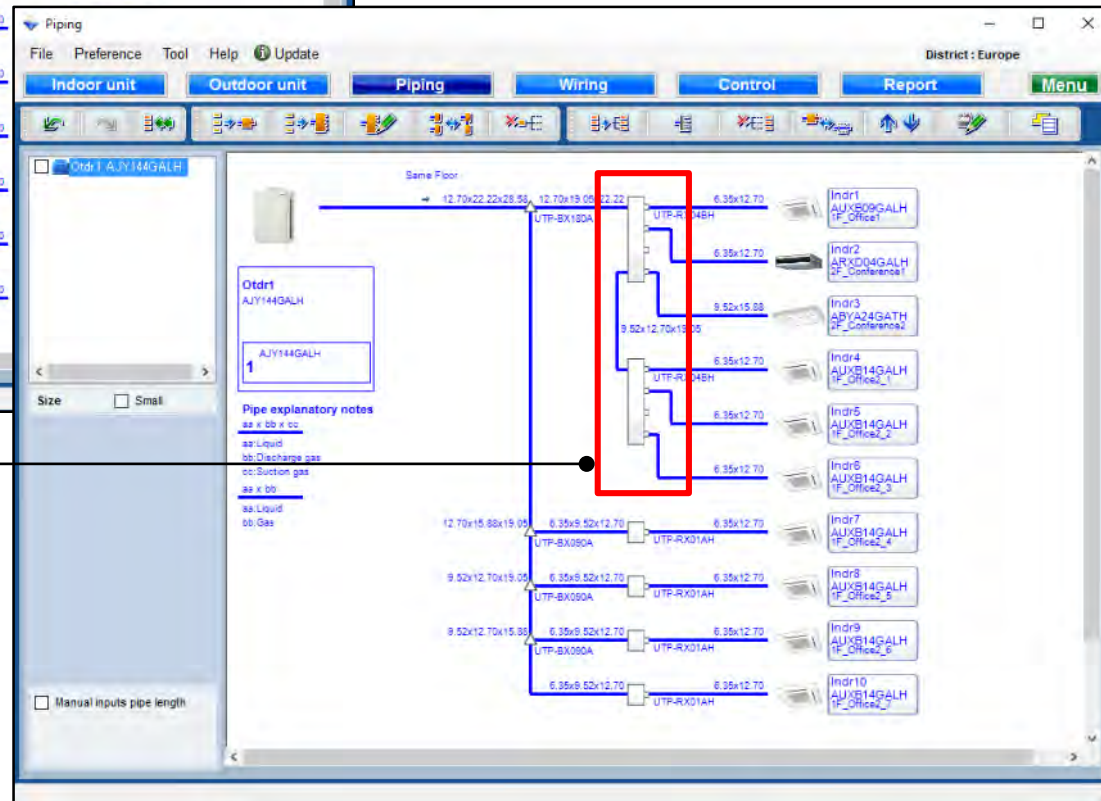
## Kombinacija RB multi funkcija



Izbor RB multi jedinica

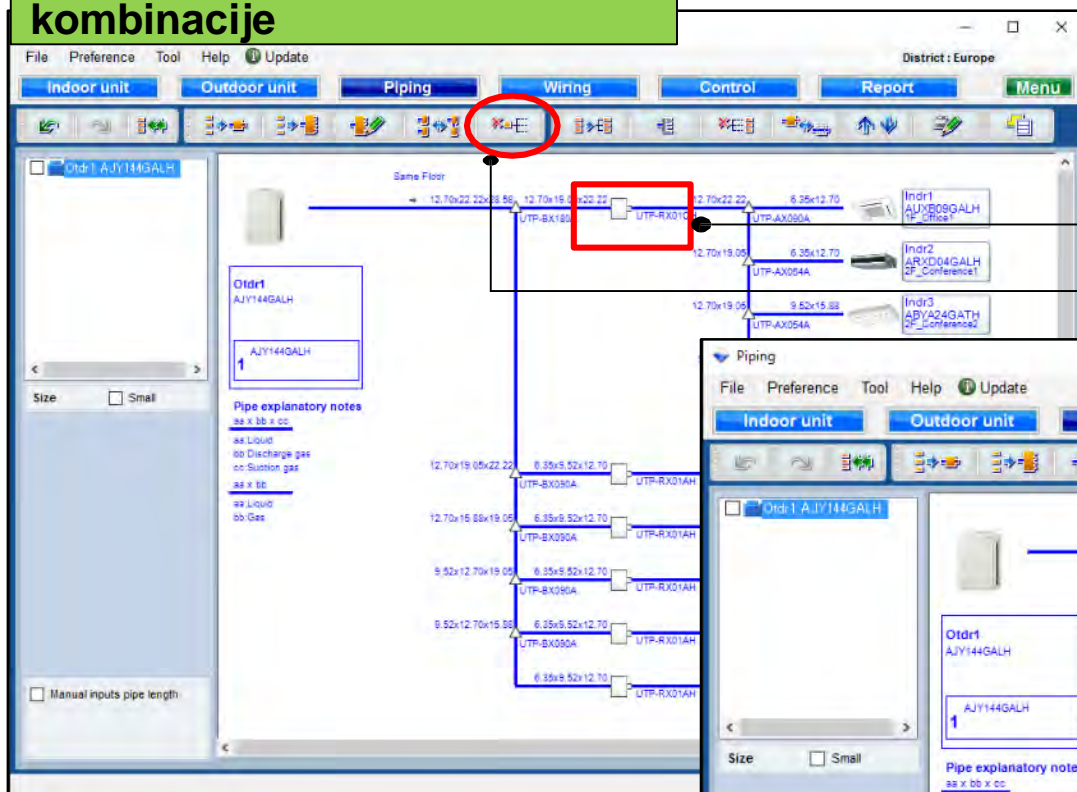
Izbor  
"Kombinuj RB multi"

Kombinuj 2 RB multi groups  
into 1 group.





## Odustajanje od željene kombinacije

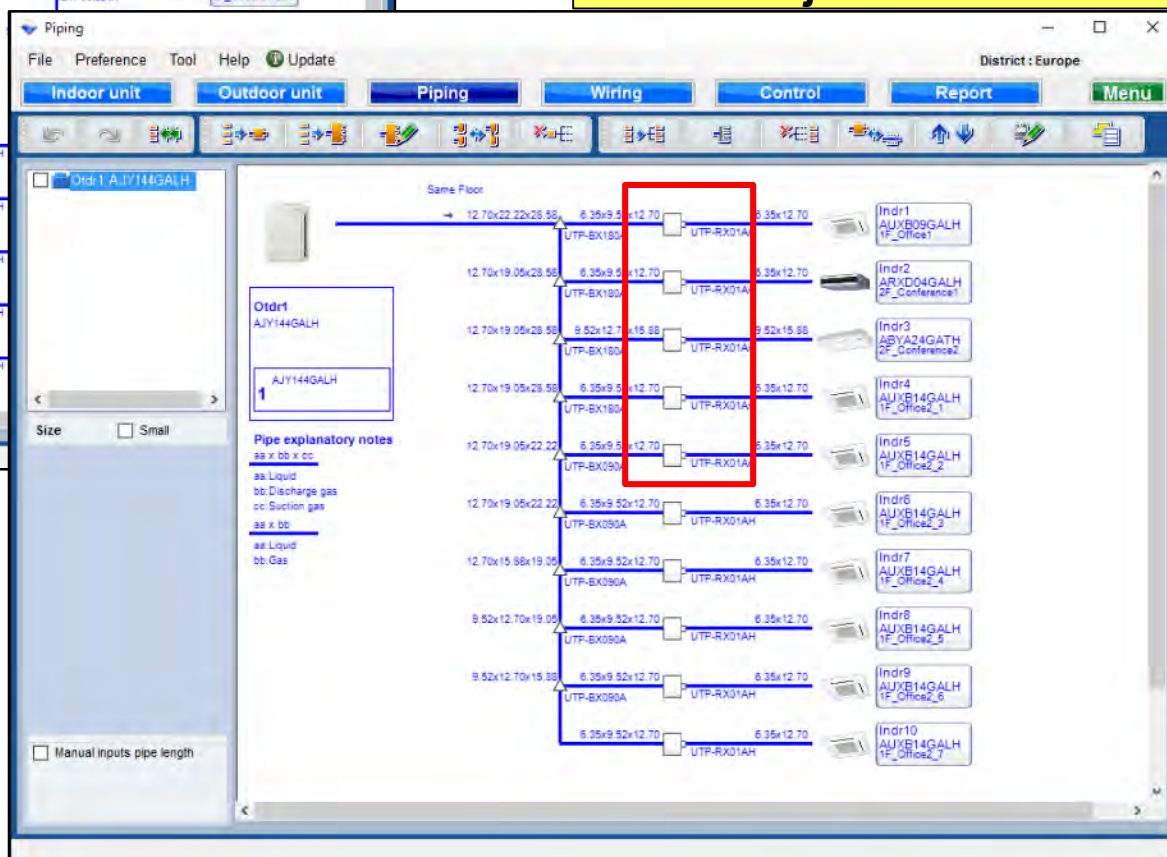


Izaberi RB jedinicu

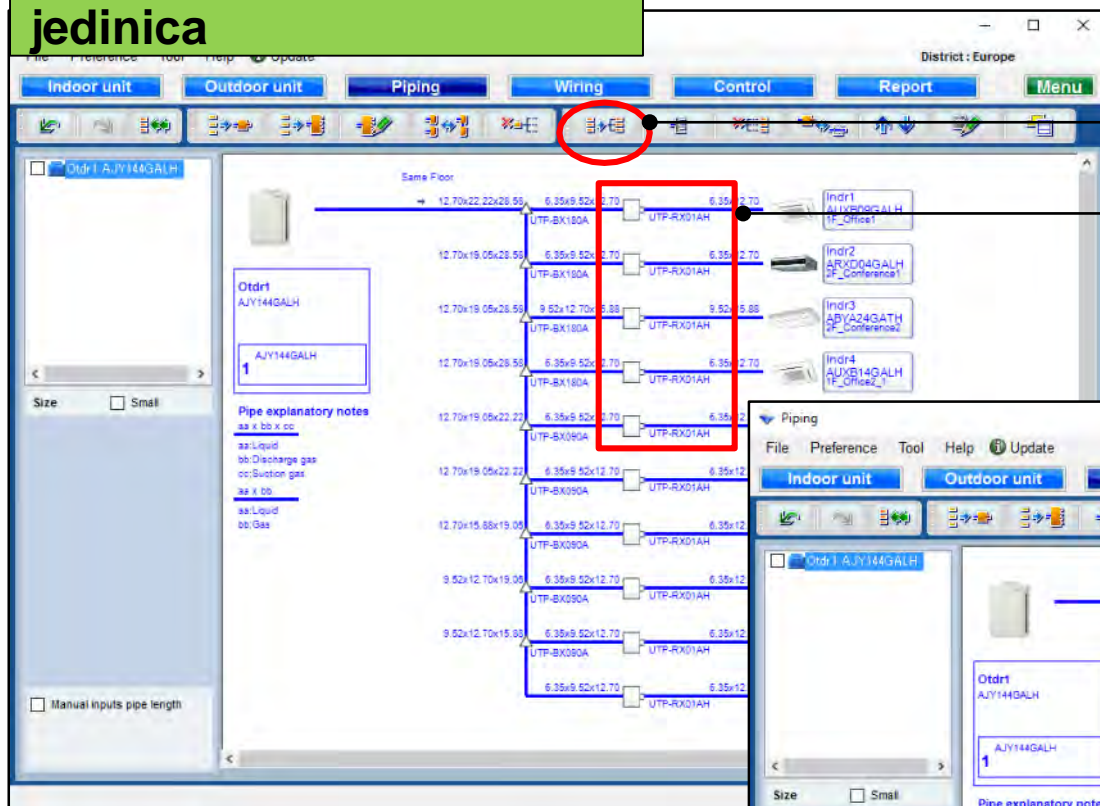
Izaberi "Odustani od kombinacije"

## Odustajanjem od kombinacije

\*Izbor RB multi ili sve kombinovane jedinice, mogu biti oslobođene.



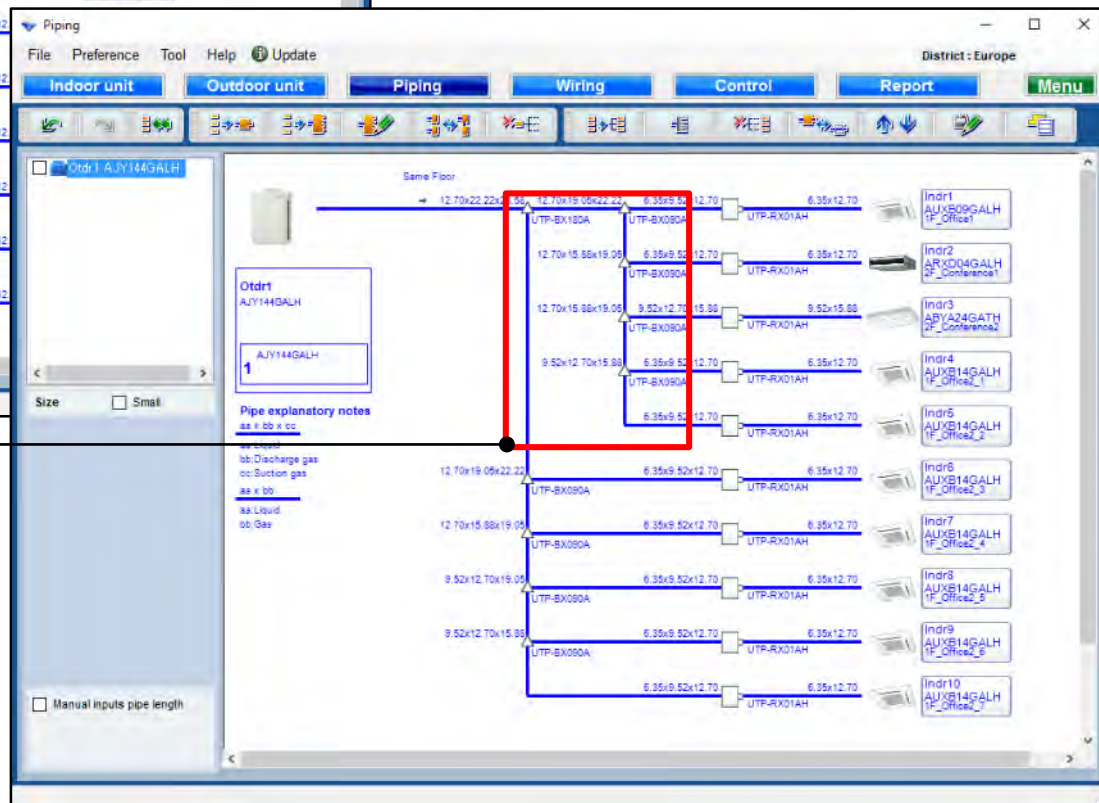
## Kombinovanje unutrašnjih jedinica



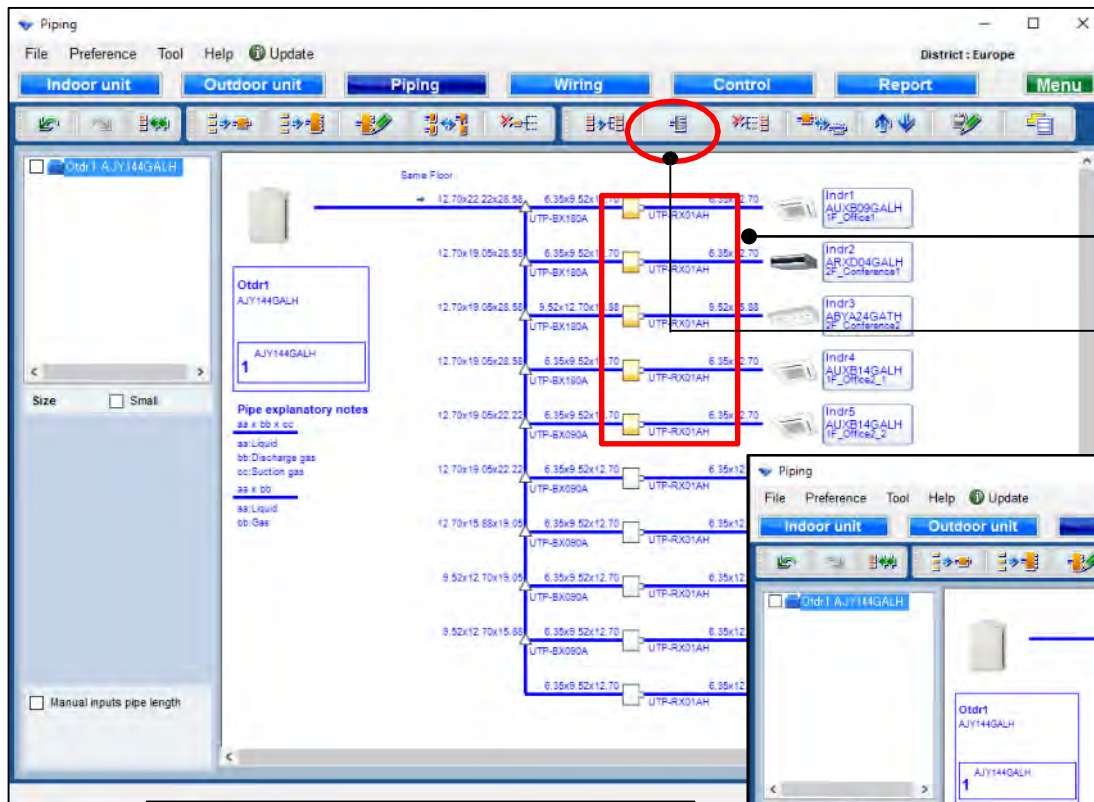
Izbor RB jedinica

Izbor "Kombinovanje unutrašnjih"

Ovaj deo se može izdvojiti.



## Dodaj header funkciju

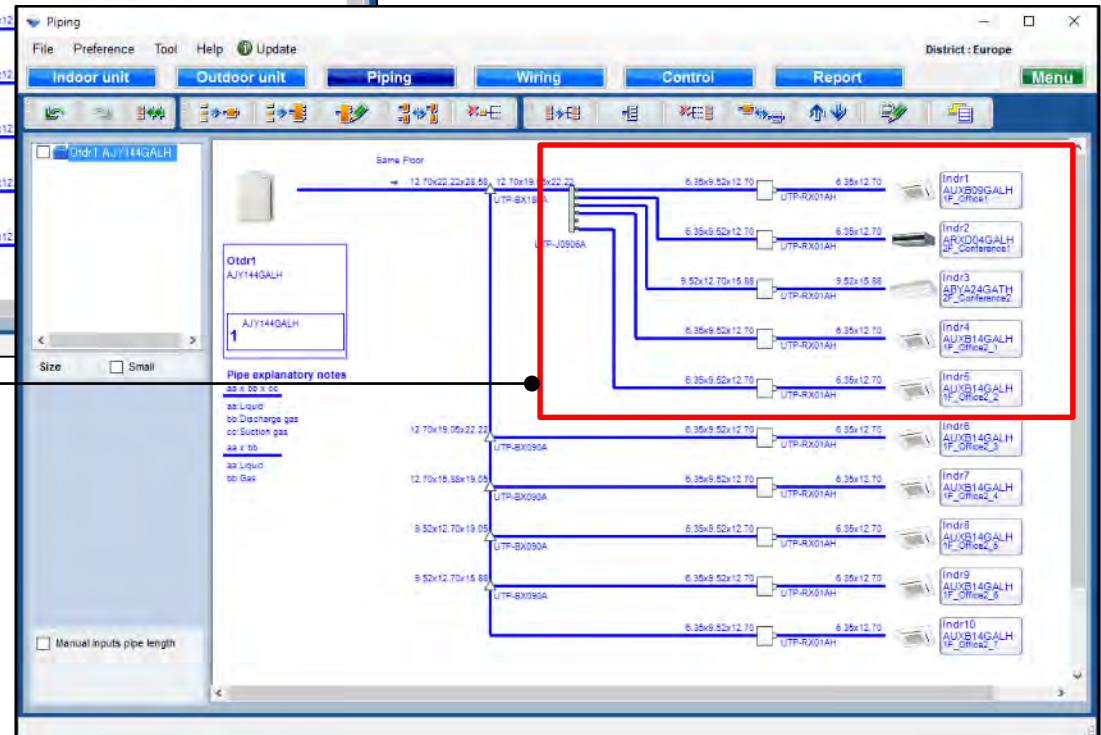


Izbor RB jedinice



Izbor "Add header"

Kreirajte header kombinaciju



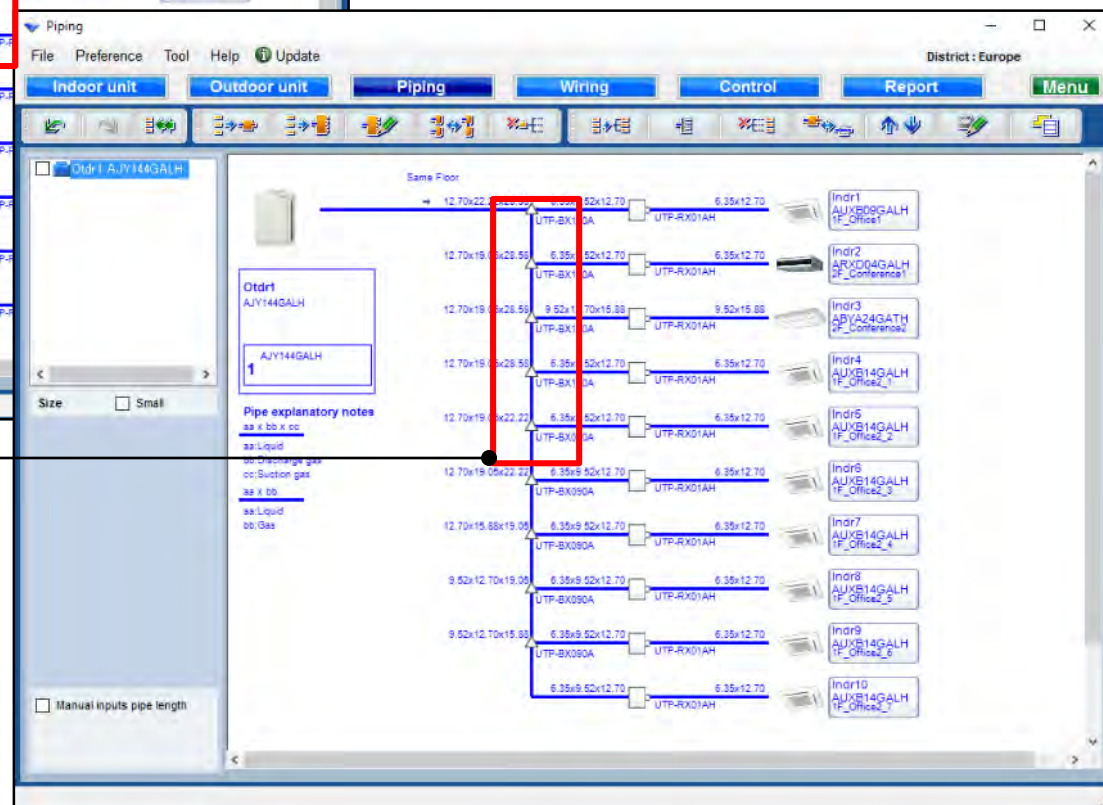
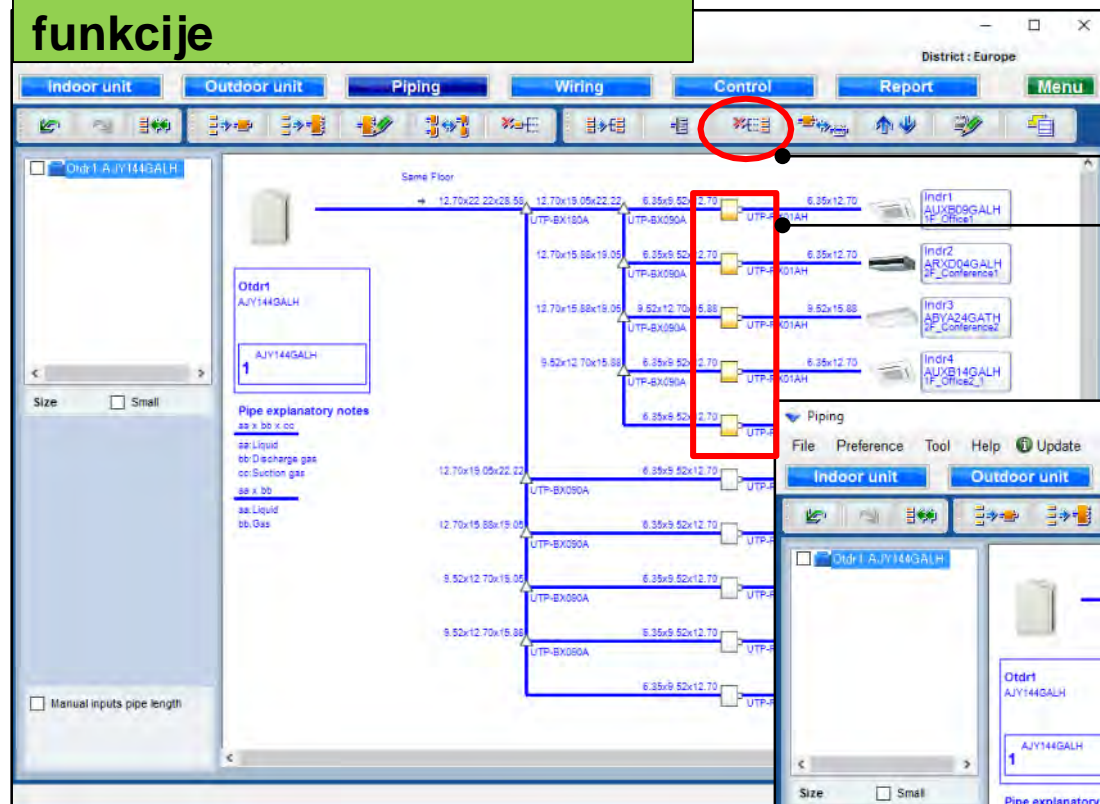


**Odustati od kombinovane funkcije**

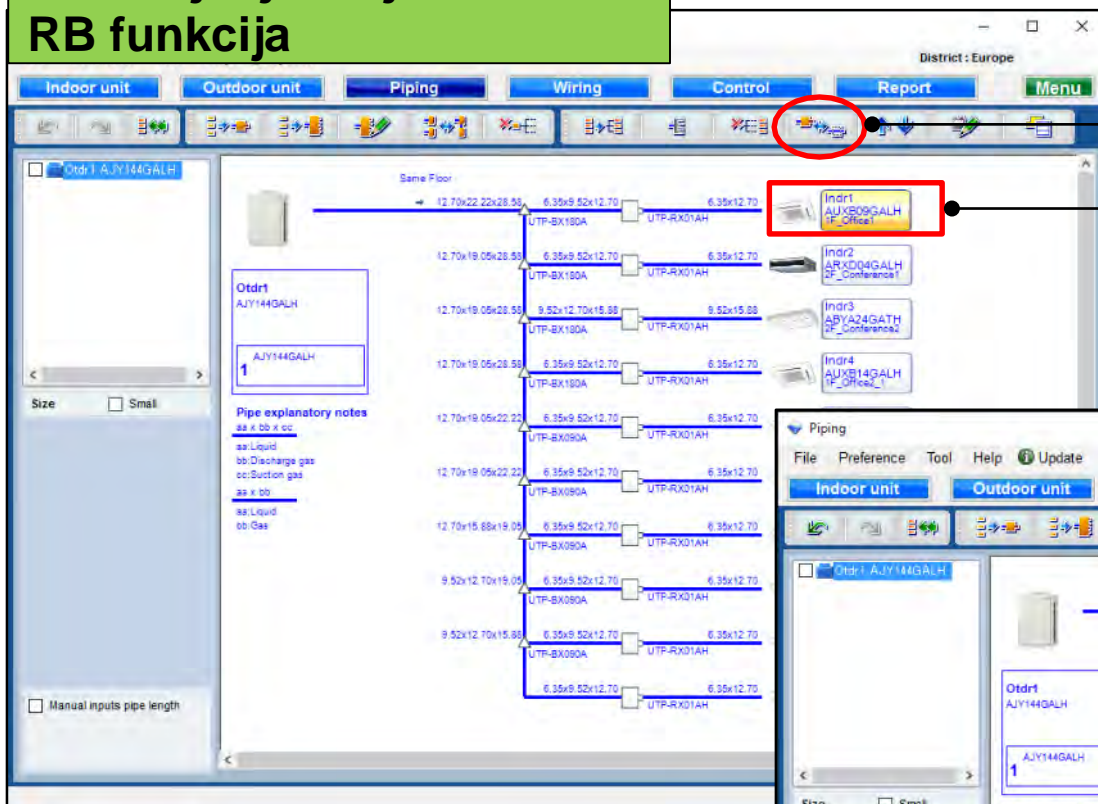
**Izbor RB jedinice**

**Izbor "Release combine"**

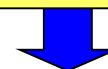
**Odustajanje od kombinacije**



## Odustajanje od jediničnih RB funkcija

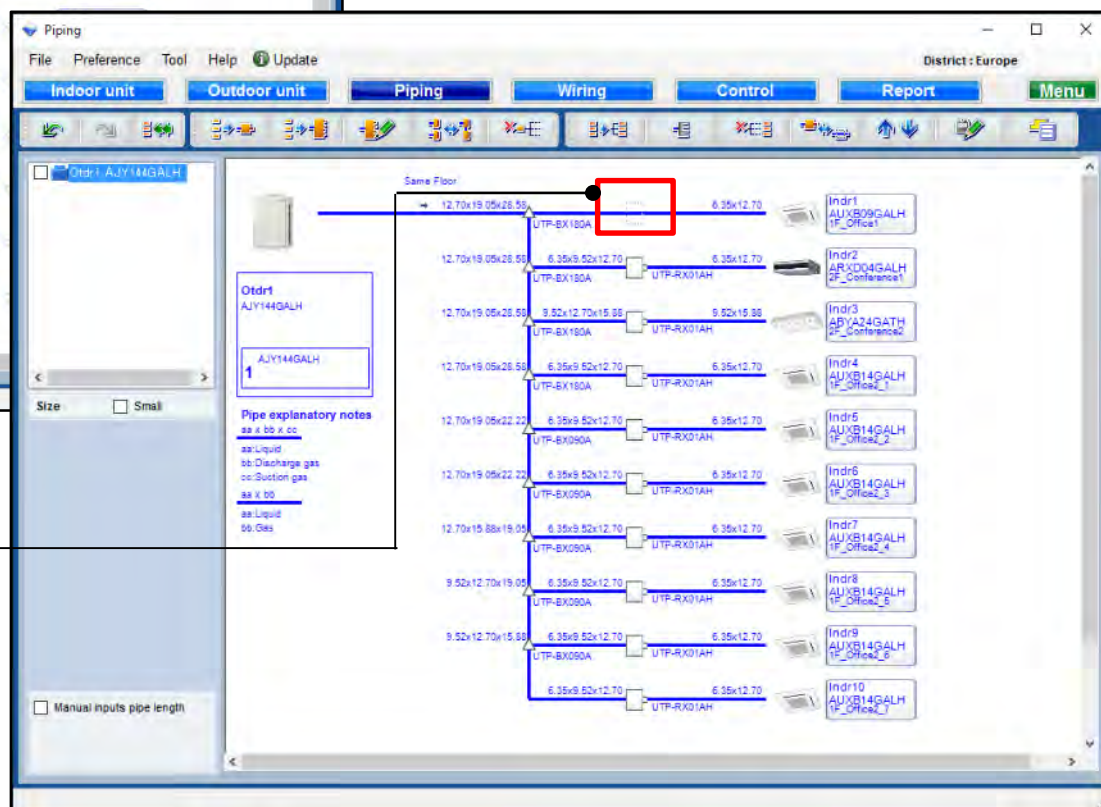


Izaberi unutrašnju jedinicu

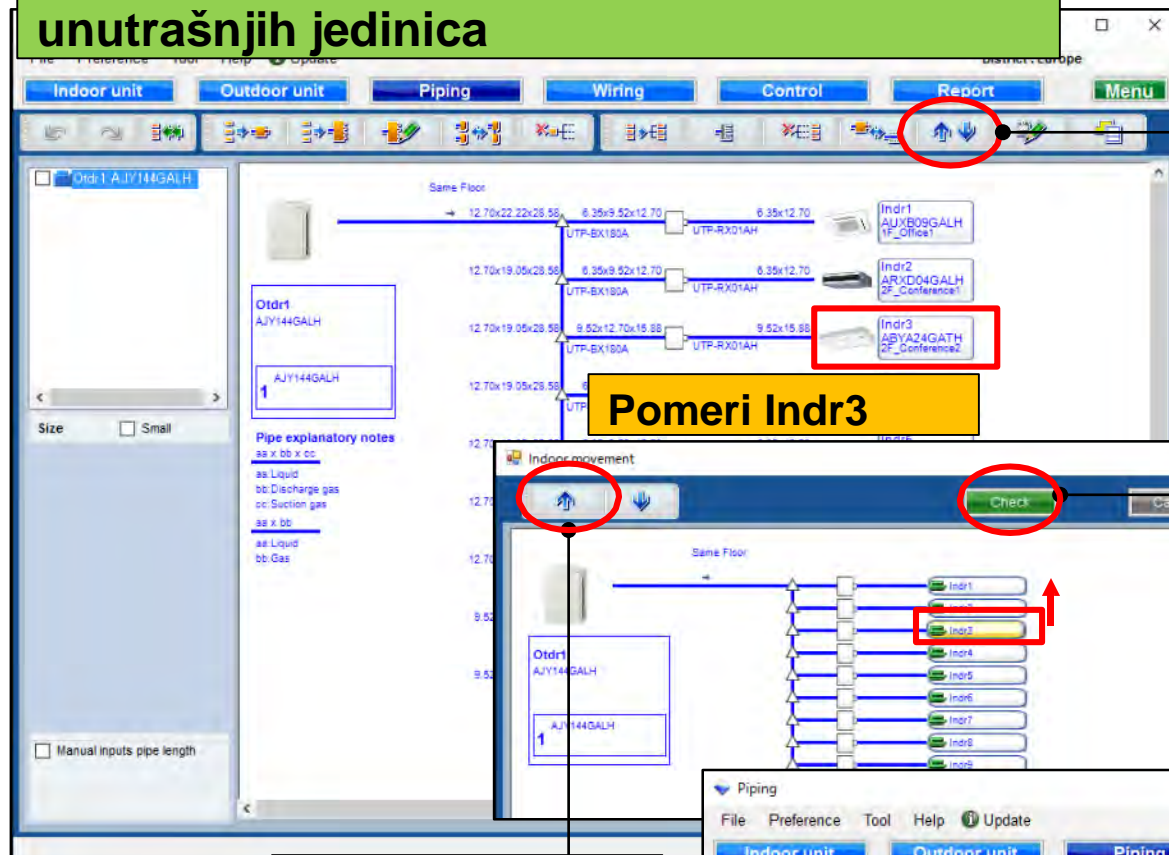


Izaberi  
"Odustani od jedinice RB  
(damsamo hladi IU)"

Manje od 50% sistema  
može biti promenjeno  
samo na hlađenje.



**Pomerite korak napred kombinaciju unutrašnjih jedinica**

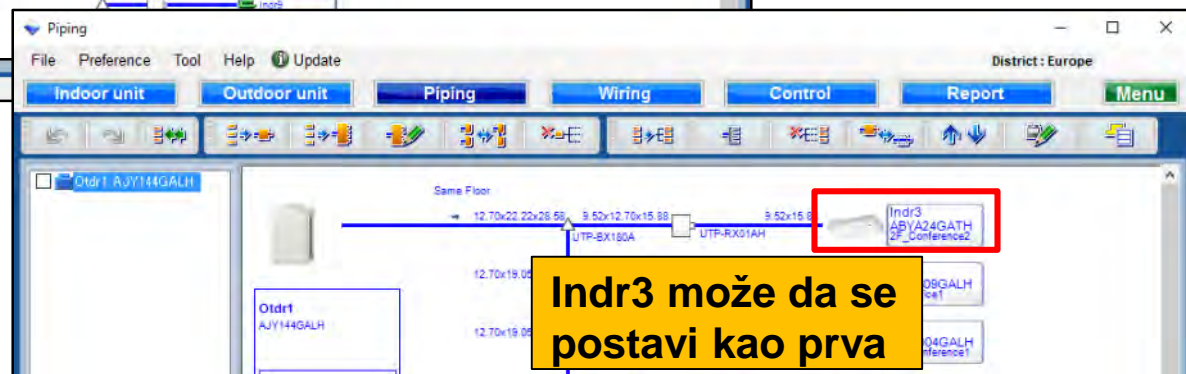


**Pomeri Indr3**

**Izaberi  
" Korak napred kod kombinovanja unutrašnjih jedinica "**

**Otvori - zamenu redosleda unutrašnjih  
Čekiraj i potvrdi**

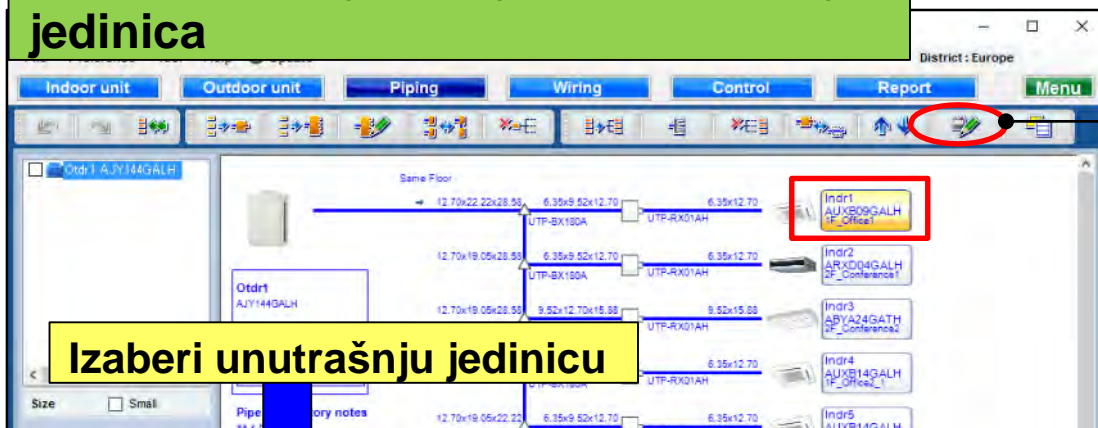
**Pomeri se korak gore**



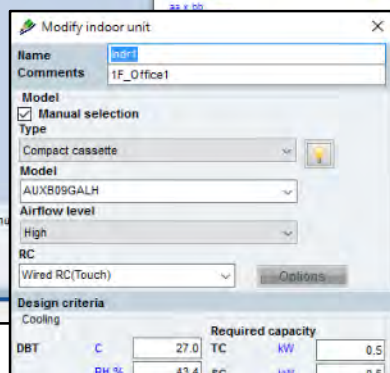
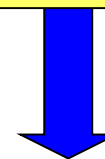
**Indr3 može da se postavi kao prva**



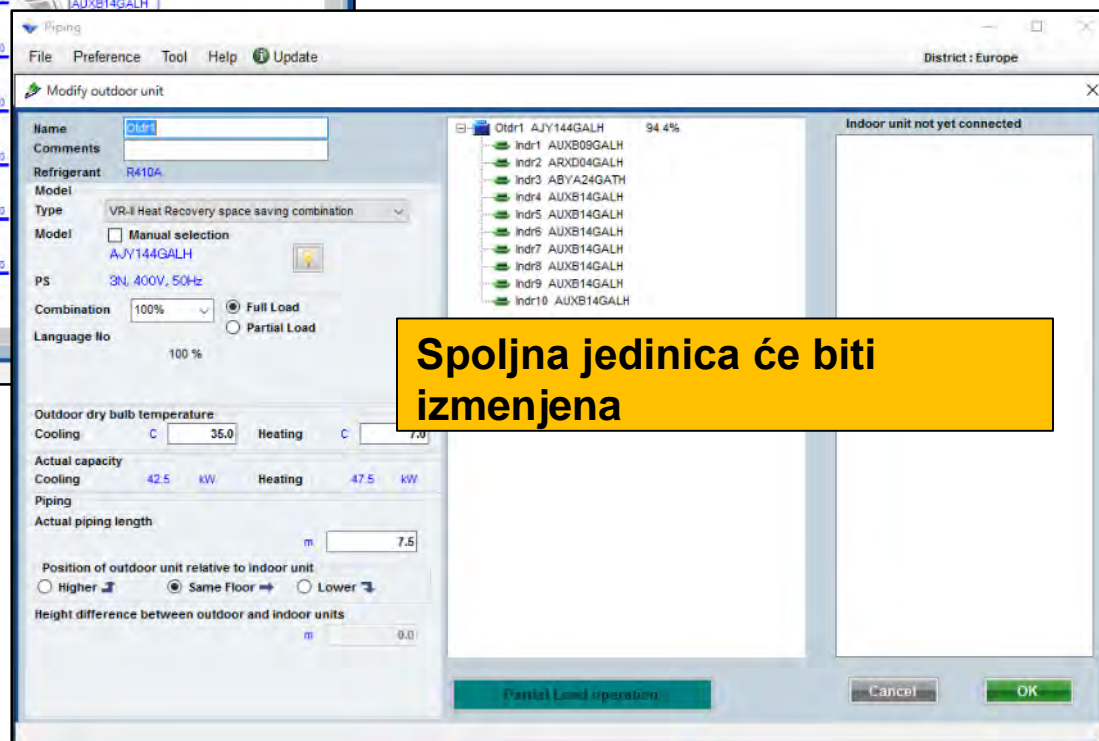
**Izmeniti funkcije spoljnih i unutrašnjih jedinica**



**Izbor  
“Izmena unutrašnje ili spoljne”**

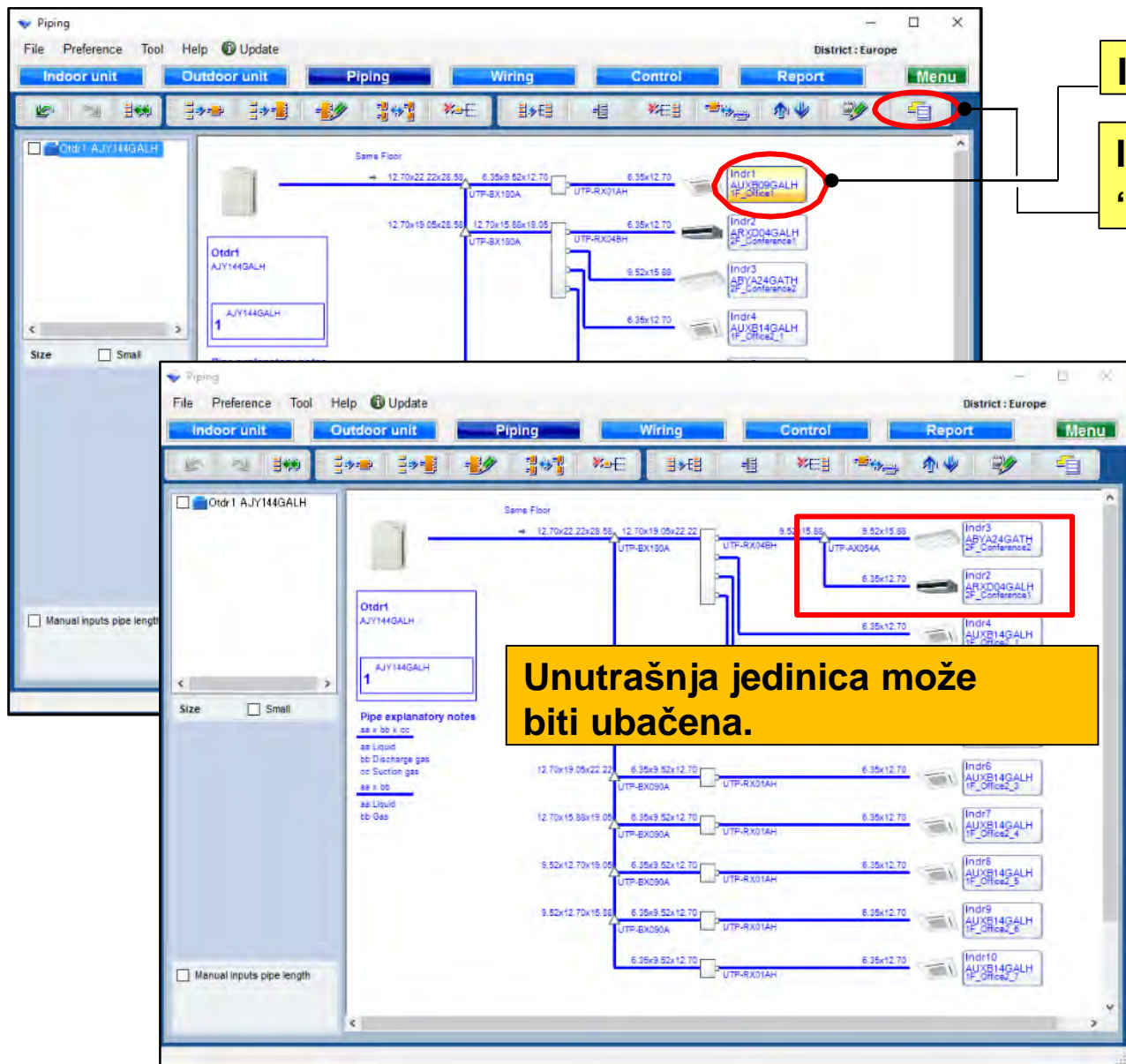


**Prilikom izbora unutrašnje jedinice “Izmeni unutrašnju ili spoljnu”, unutrašnja jedinica će biti - izmenjena.**



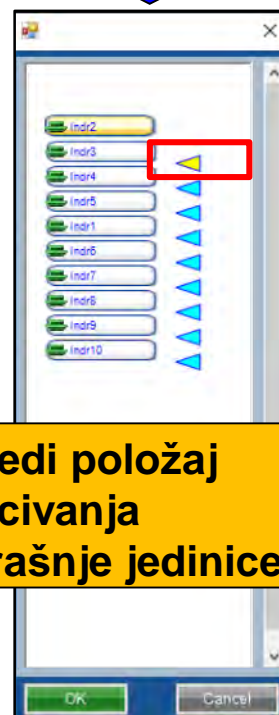
**Spoljna jedinica će biti izmenjena**

## Ubaciti funkciju



Izaberi unutrašnju jedinicu

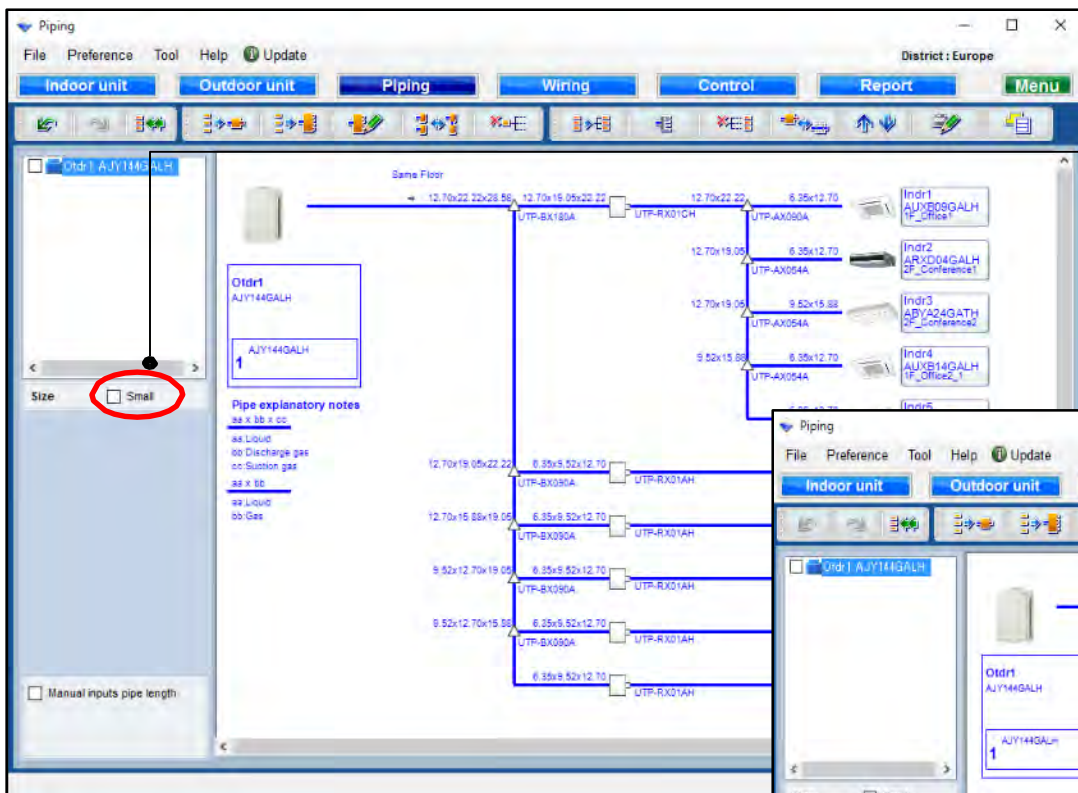
Izaberi  
"Ukloni, ubaci ili poništi"



Unutrašnja jedinica može  
biti ubačena.

Odredi položaj  
ubacivanja  
unutrašnje jedinice.

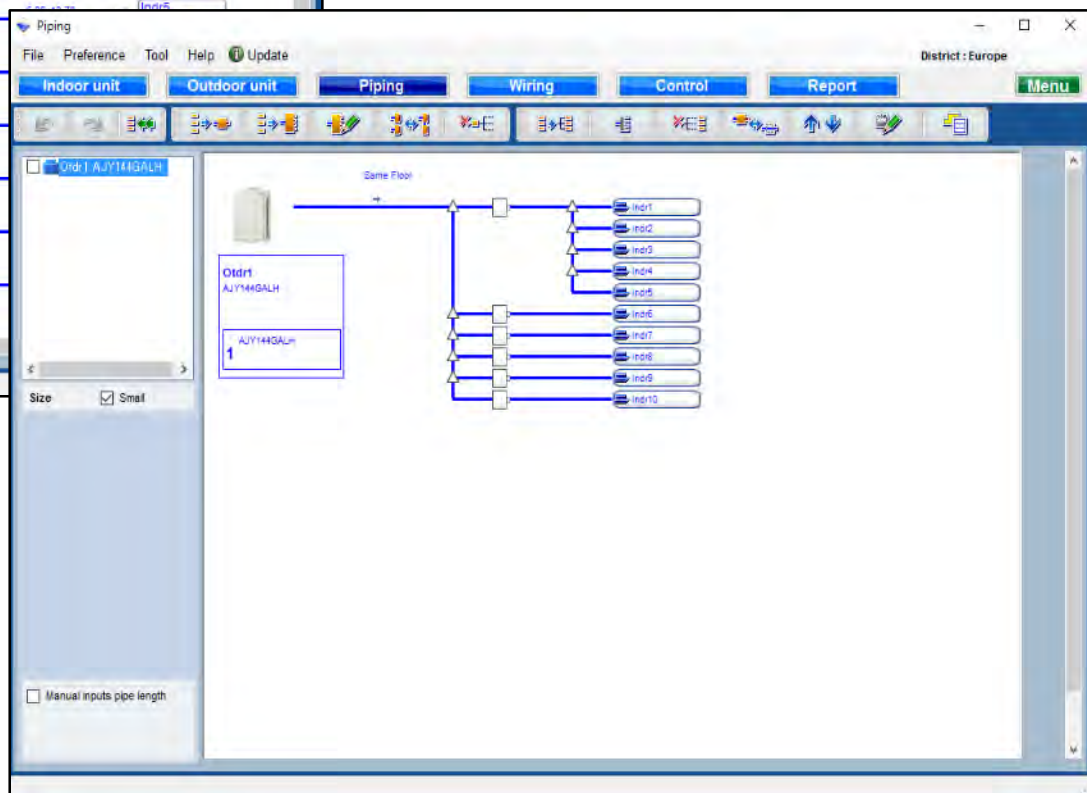
## Mali pregled funkcija



Izaberi "Small"



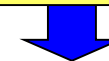
Izmenilo se u malo promena.





## Funkcija podešavanja dužine cevi(1/4)

Izaberi “Ručni unos dužine cevi“



Otvoriti ekran za ručni unos dužine cevi

The screenshot shows the Design Simulator software interface. The main window displays a piping diagram with various units and pipes. A red circle highlights the 'Manual inputs pipe length' checkbox in the bottom left corner. A red circle highlights the 'Input pipe length' dialog box in the center, which contains a text field for 'Pipe length' and a 'Finish' button. The bottom panel shows the 'Pipe explanatory notes' and 'Manual inputs pipe length' checkbox.

**Input pipe length dialog box:**

- Input pipe length
- Pipe length  m
- Finish

**Manual inputs pipe length checkbox:**

☐ Manual inputs pipe length

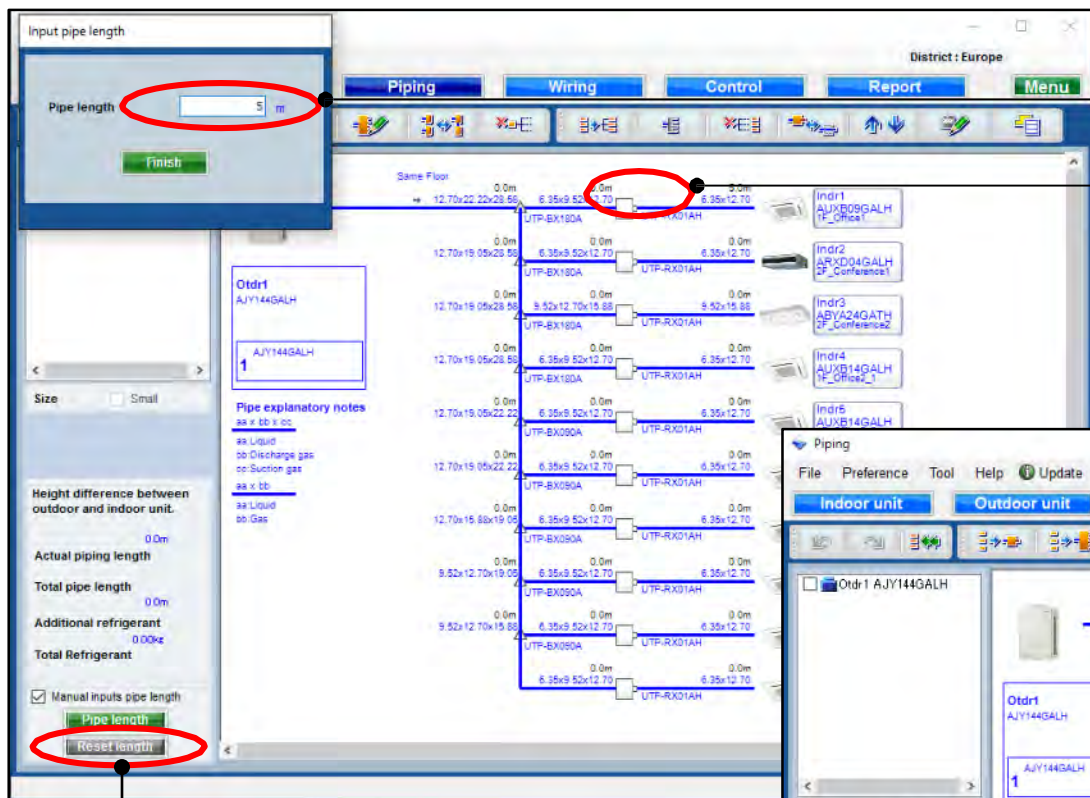
**Pipe explanatory notes:**

- aa x bb x cc
- aa: Liquid
- bb: Discharge gas
- cc: Suction gas
- aa x bb
- aa: Liquid
- bb: Gas

**Manual inputs pipe length section:**

- Height difference between outdoor and indoor unit: 0.0m
- Actual piping length
- Total pipe length
- Additional refrigerant
- Total Refrigerant
- ☒ Manual inputs pipe length
- Pipe length
- Reset length

## Funkcija podešavanja cevi (2/4)

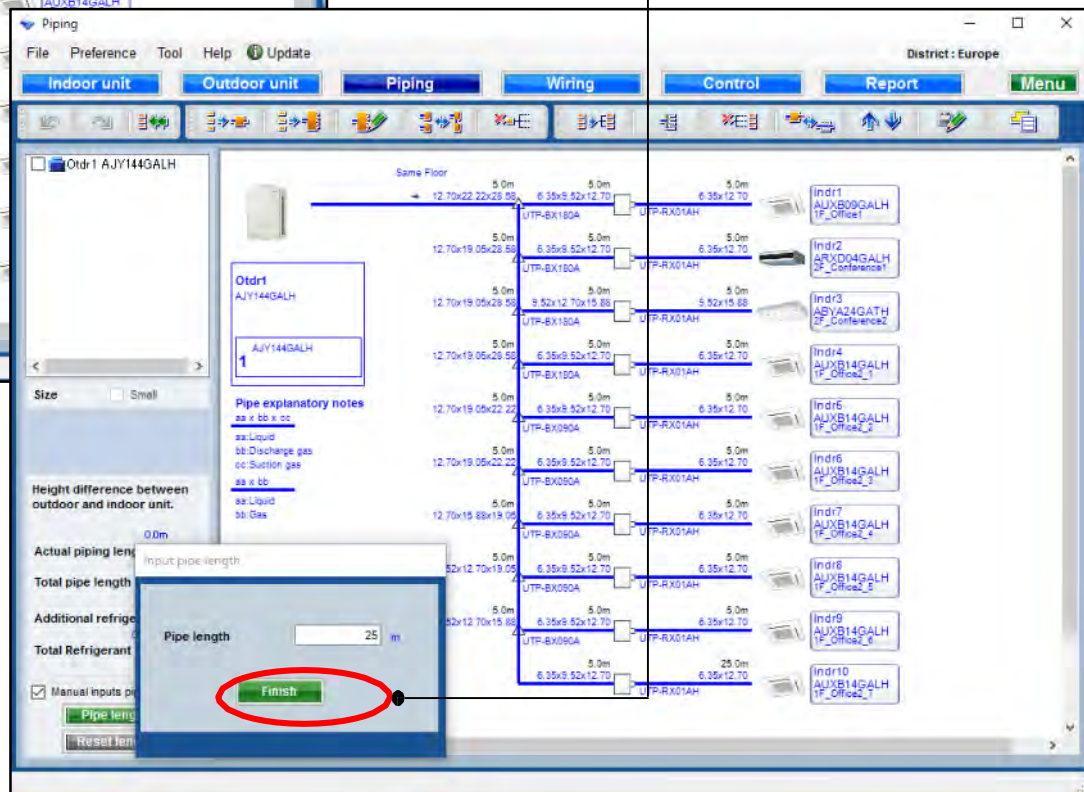


Unesite dužine podešavanja cevi

Izaberi sve cevi

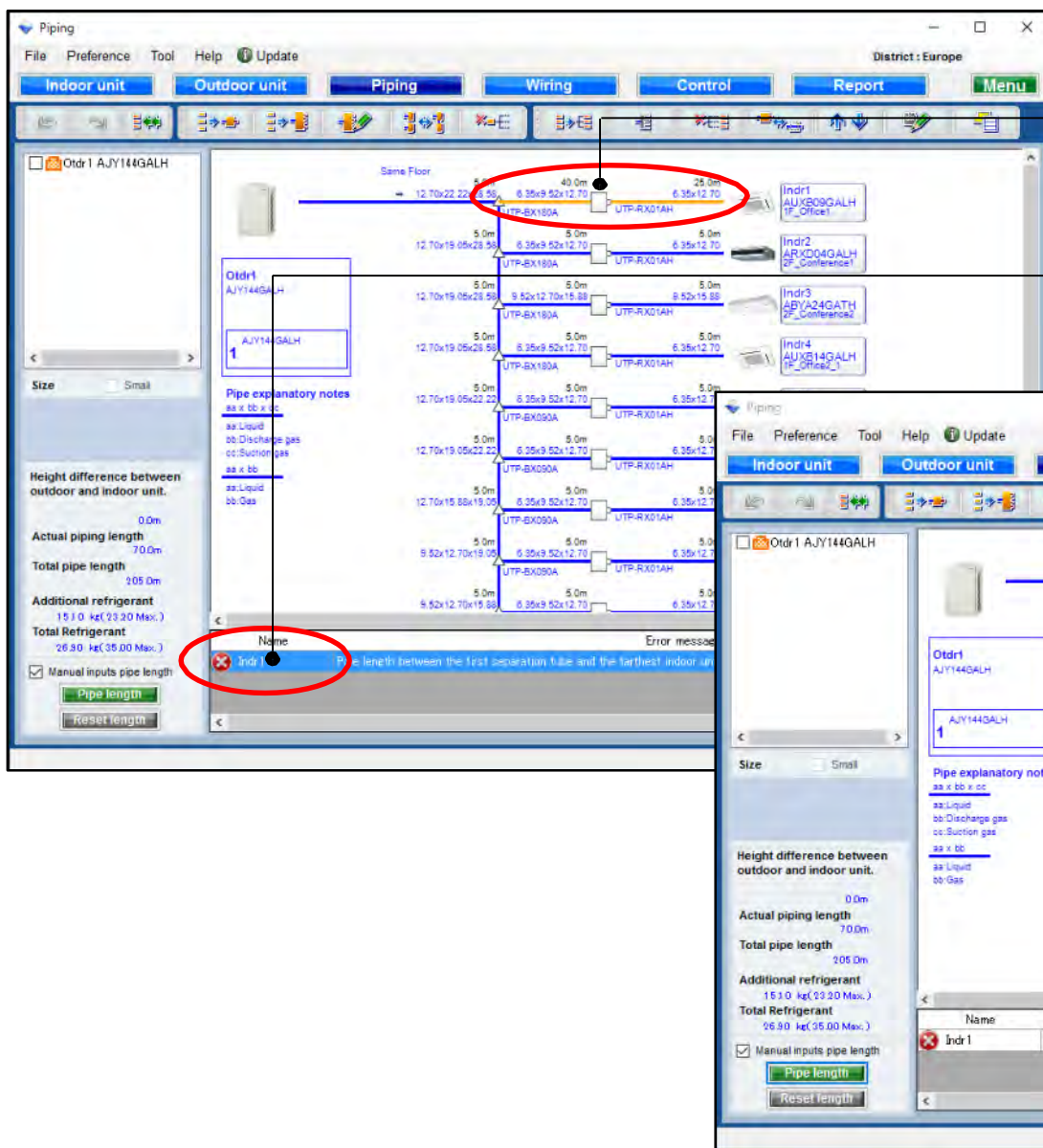
Posle izabranih dužina -  
pritisni "Finish"

Resetovanje svih dužina i  
vraćanje na polazne  
parametre.



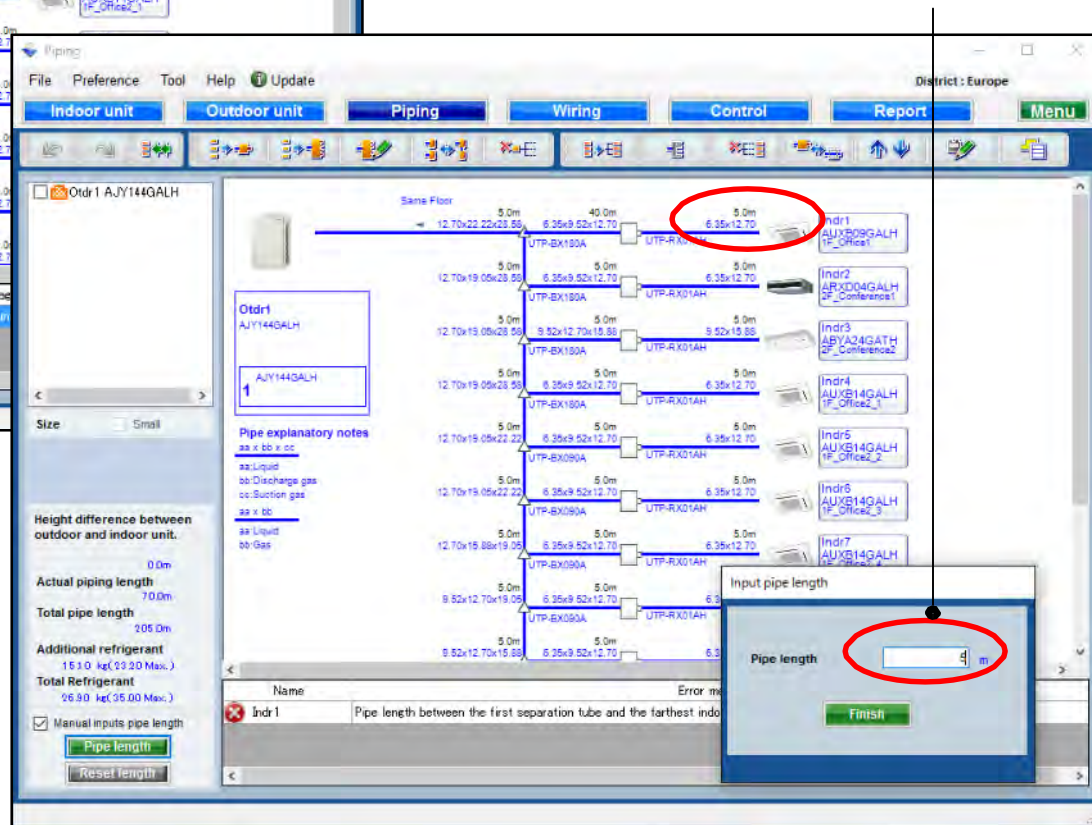


## Funkcija podešavanja cevi(3/4)



Upozorenje daje informaciju o greškama koje sve unešeno ili prelazi ograničenja.

Ponovi, selektuj "Finish"





## Funkcija podešavanja cevi(4/4)

The screenshot displays the 'Piping' window of the Design Simulator. The interface includes a menu bar (File, Preference, Tool, Help, Update), a toolbar with various piping tools, and a main workspace showing a duct layout. The layout consists of a vertical main duct with several horizontal branches connecting to indoor units (Indr1 to Indr9). Pipe segments are labeled with dimensions like '12.70x22.22x28.58' and '6.35x9.52x12.70'. On the left, a panel shows the selected outdoor unit 'Otdr1 AJY144GALH' and a 'Pipe explanatory notes' section with options for liquid, discharge gas, or suction gas. Below this, a 'Height difference between outdoor and indoor unit' section shows 'Actual piping length' as 60.0m and 'Total pipe length' as 185.0m. The 'Additional refrigerant' section shows 14.68 kg (23.20 Max.) and 'Total Refrigerant' as 26.48 kg (39.00 Max.). At the bottom, there are checkboxes for 'Manual inputs pipe length' and buttons for 'Pipe length' and 'Reset length'.

**Prikaz trenutne dužine cevovoda :  
izabrana i registrovana dužina.**

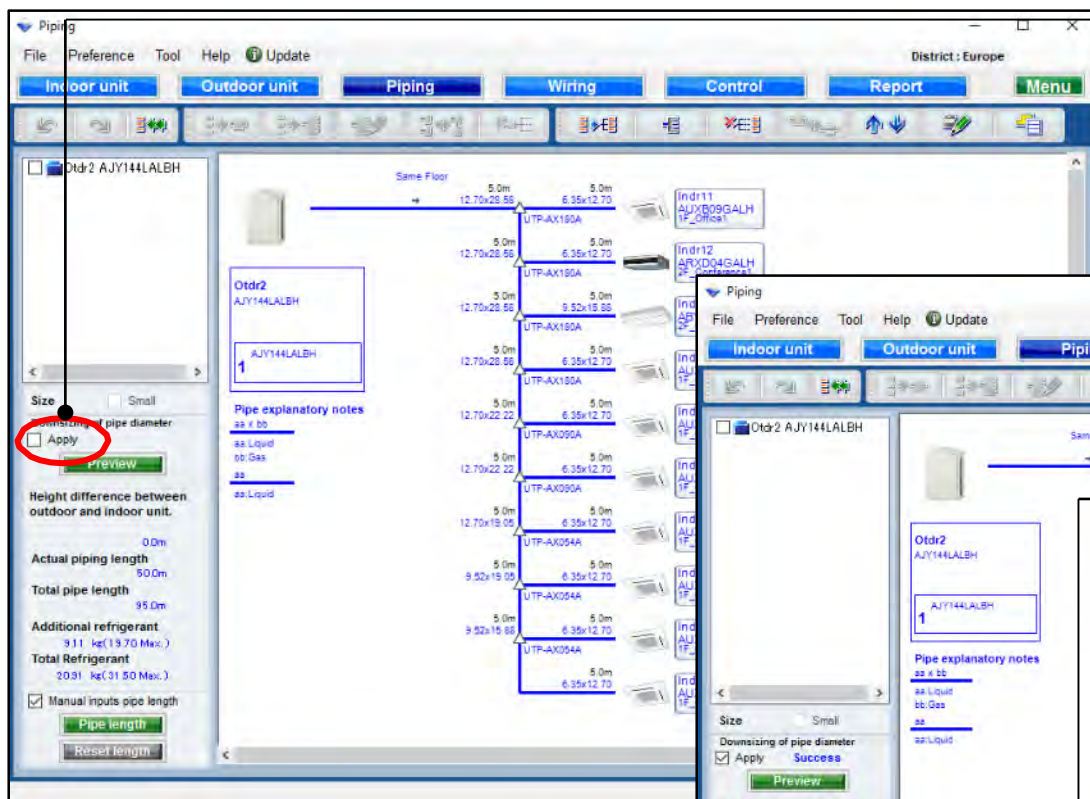
**Dodatna količina rashladnog fluida se  
automatski izračunava i dodaje.**

## Smanjivanje prečnika cevi(1/2)

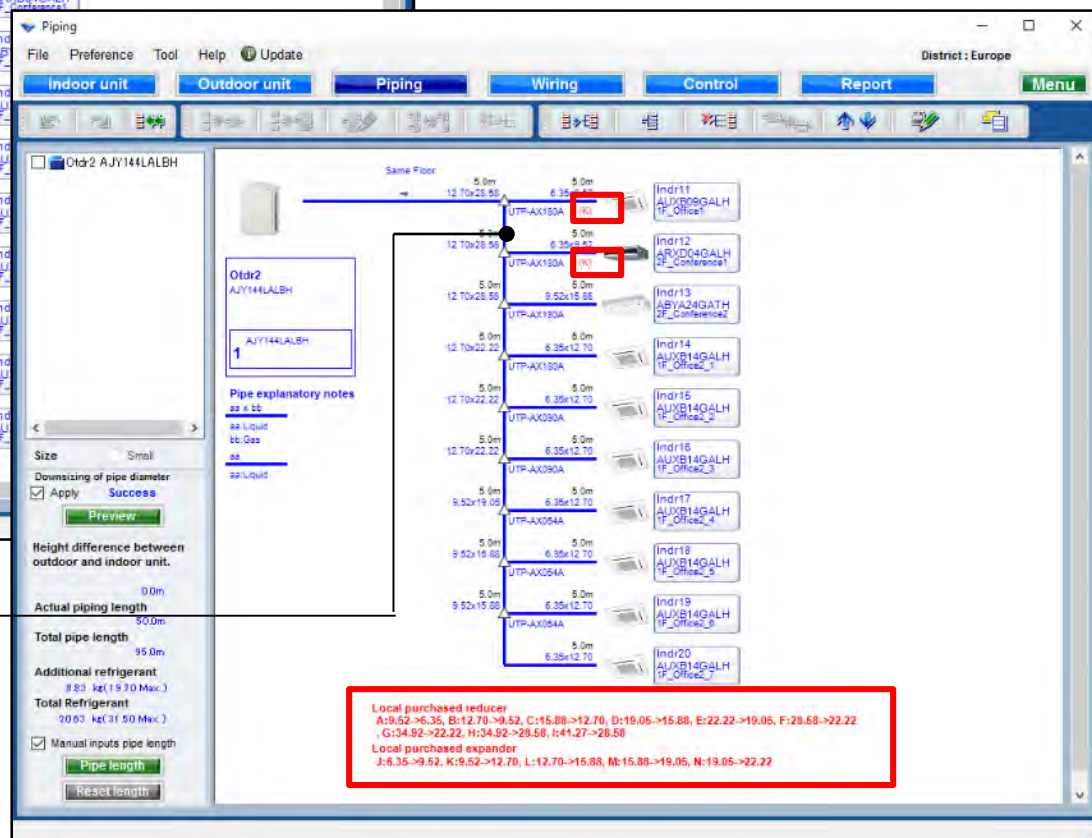
\*V-III seria samo na ciljanom području

Izaberi “Primeni”

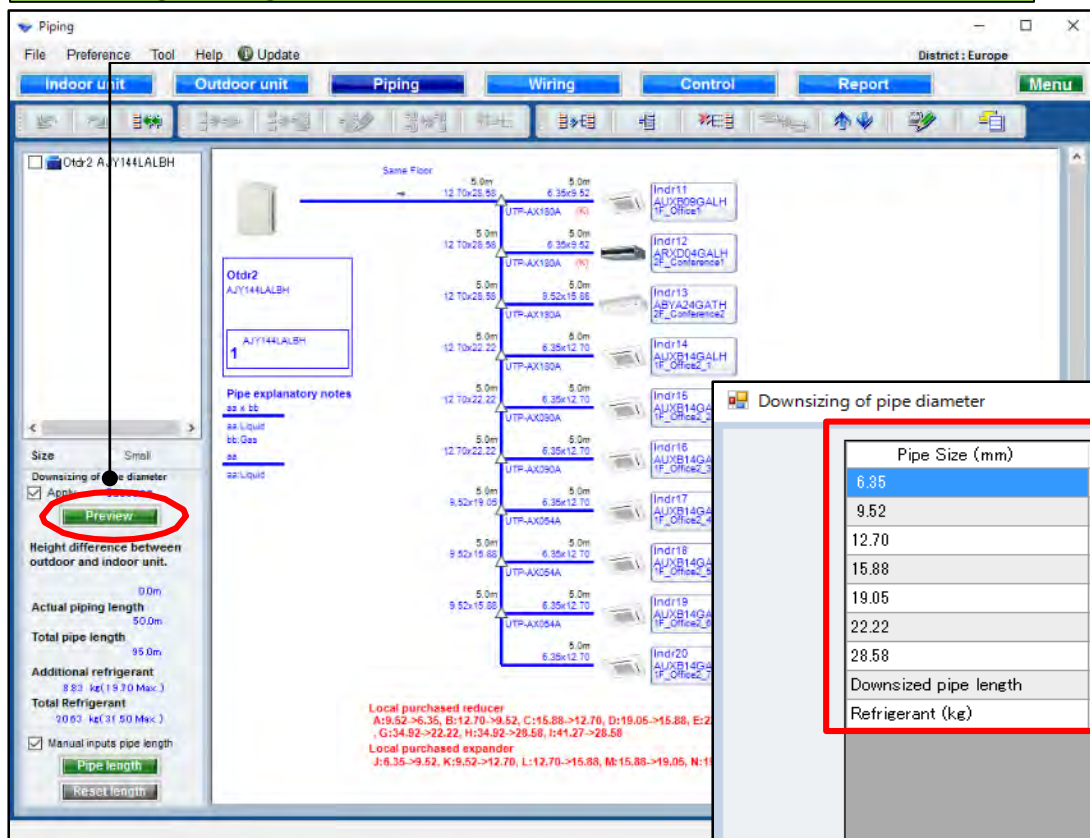
Smanjivanje prečnika cevi



Kada je potrebna redukcija cevi prikazuje se.



## Smanjivanje prečnika cevi(2/2)



Izaberi “Pregled”

Prikaz “Smanjenje prečnika cevi”

Downsizing of pipe diameter

Pipe Size (mm)	Normal (m)	Downsizing (m)	Difference (m)
6.35	45.0	45.0	0.0
9.52	15.0	30.0	15.0
12.70	80.0	65.0	-15.0
15.88	10.0	15.0	5.0
19.05	10.0	5.0	-5.0
22.22	10.0	15.0	5.0
28.58	20.0	15.0	-5.0
Downsized pipe length			25.0
Refrigerant (kg)	9.11	8.83	0.28

If you input the lengths of the pipes and their length are based on the following condition, you can downsize the pipe size.

- Between outdoor unit to outdoor unit branch kit ,  
Between outdoor unit branch kits or outdoor unit branch kit to first separation tube :  
The length between master out door unit and the farthest indoor unit should be 70.0m or less.
- Between separation tubes :  
The length between master out door unit and the farthest indoor unit should be 120.0m or less,  
and the length between the first separation tube and the farthest indoor unit should be 60.0m or less.
- Between separation tube to indoor unit :

Prikaz razlike, pre i posle smanjenja dimenzija cevi i rashladnog fluvida.