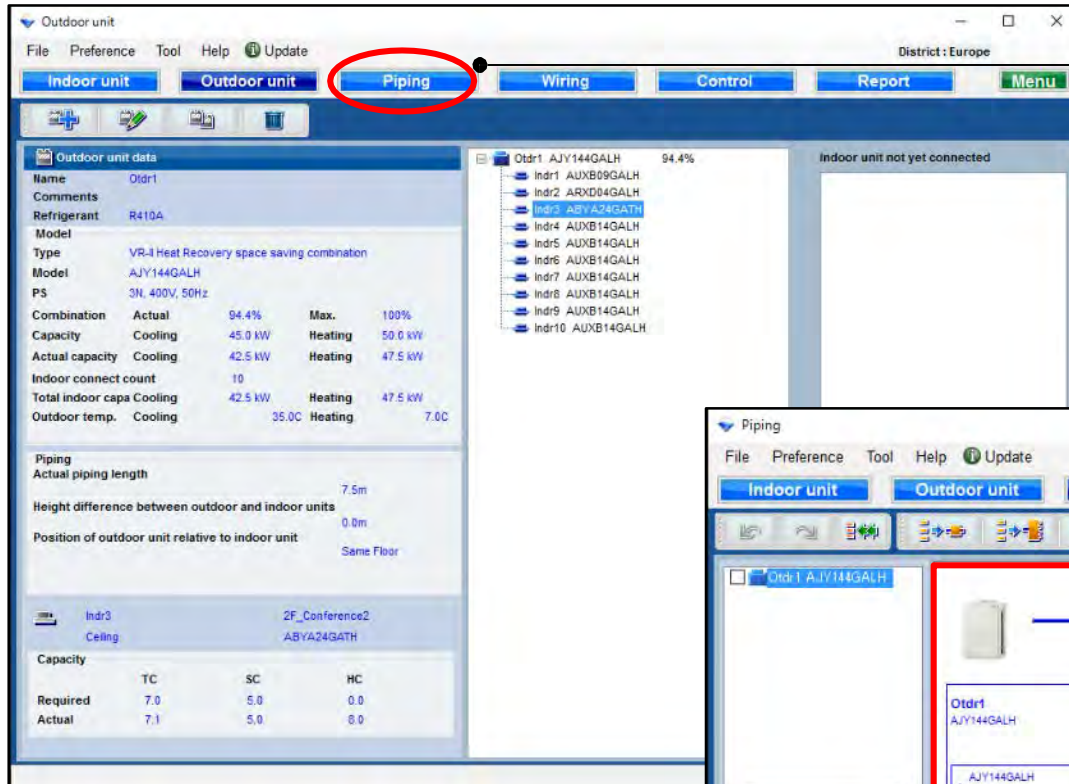


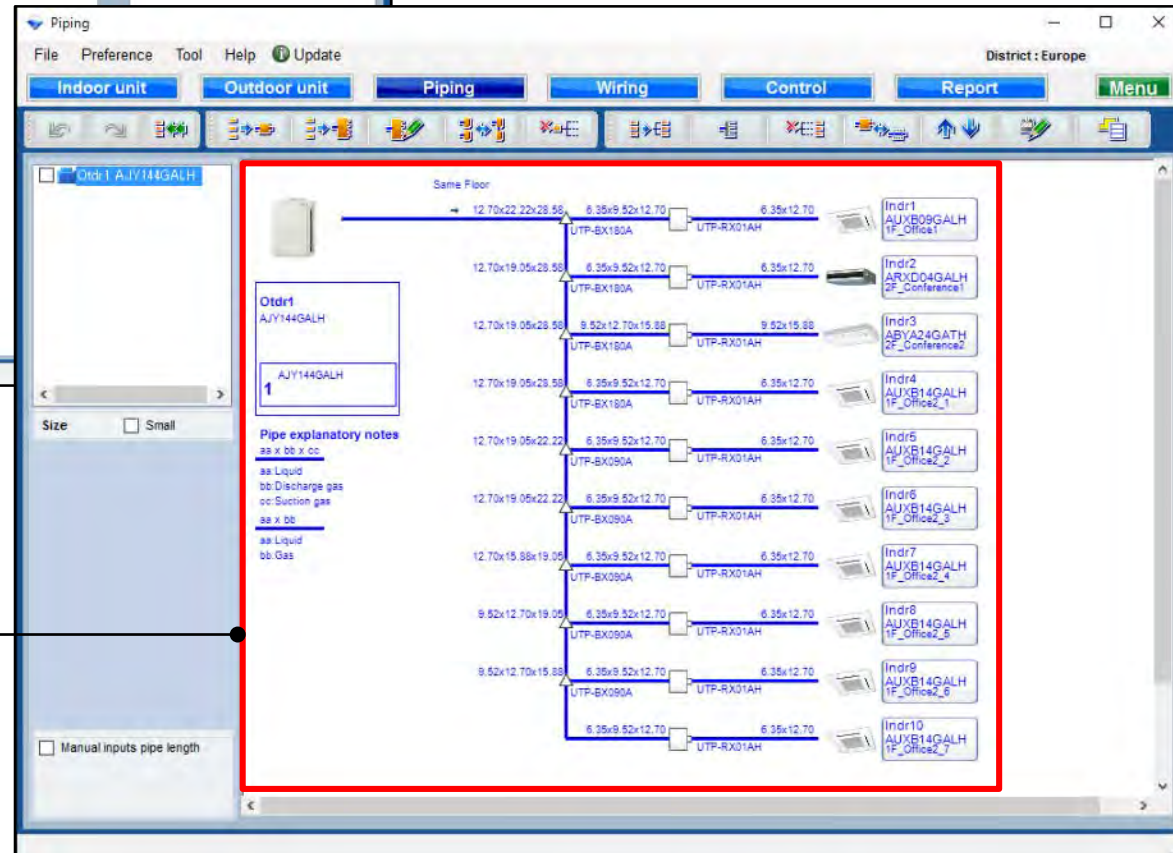
Piping settings

Design Simulator



Select "Piping"

Piping system diagram creation

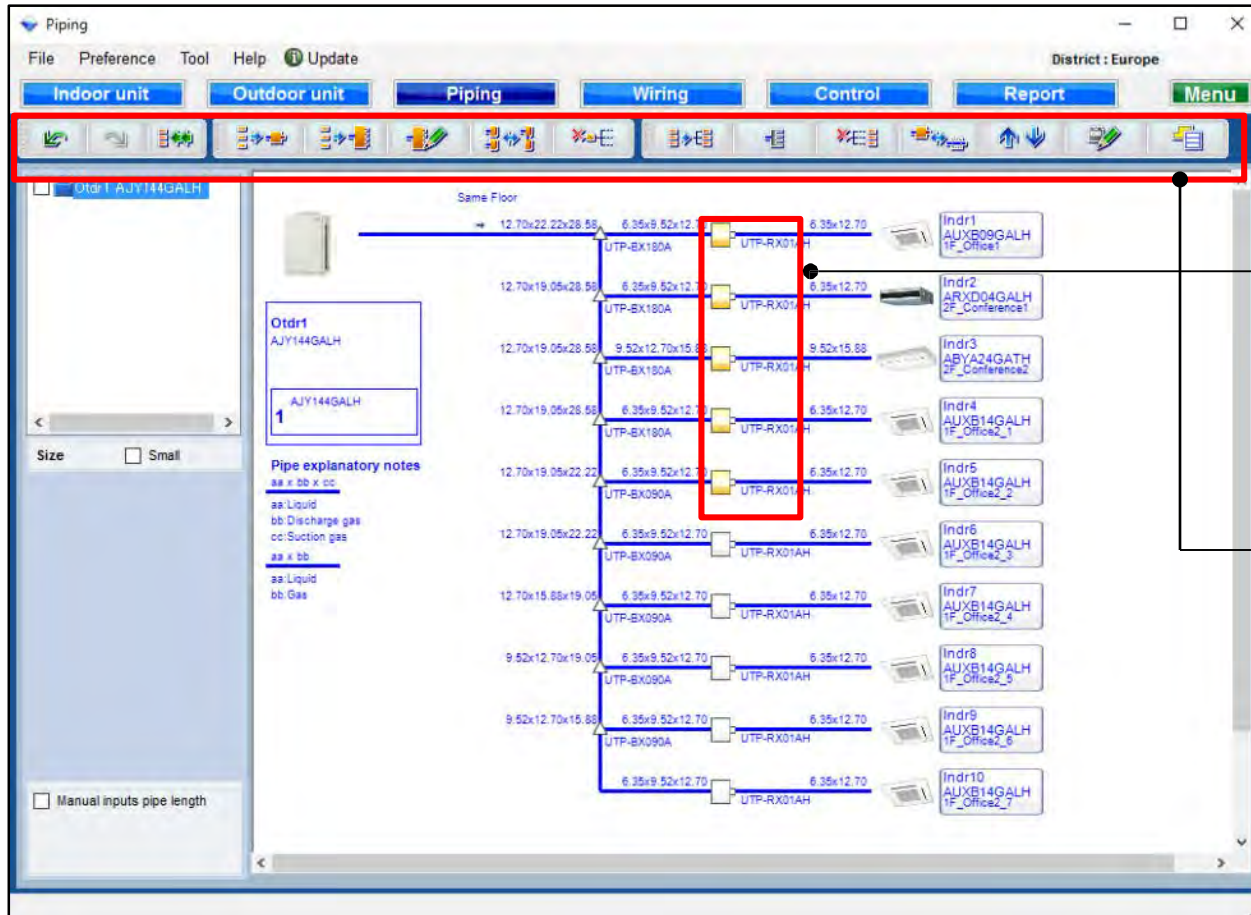


Pipe diameter, model names of outdoor unit, indoor units and connection units are displayed.

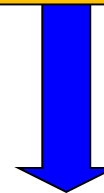
Piping settings

Design Simulator

For Heat Recovery



For Heat Recovery, select RB Unit.

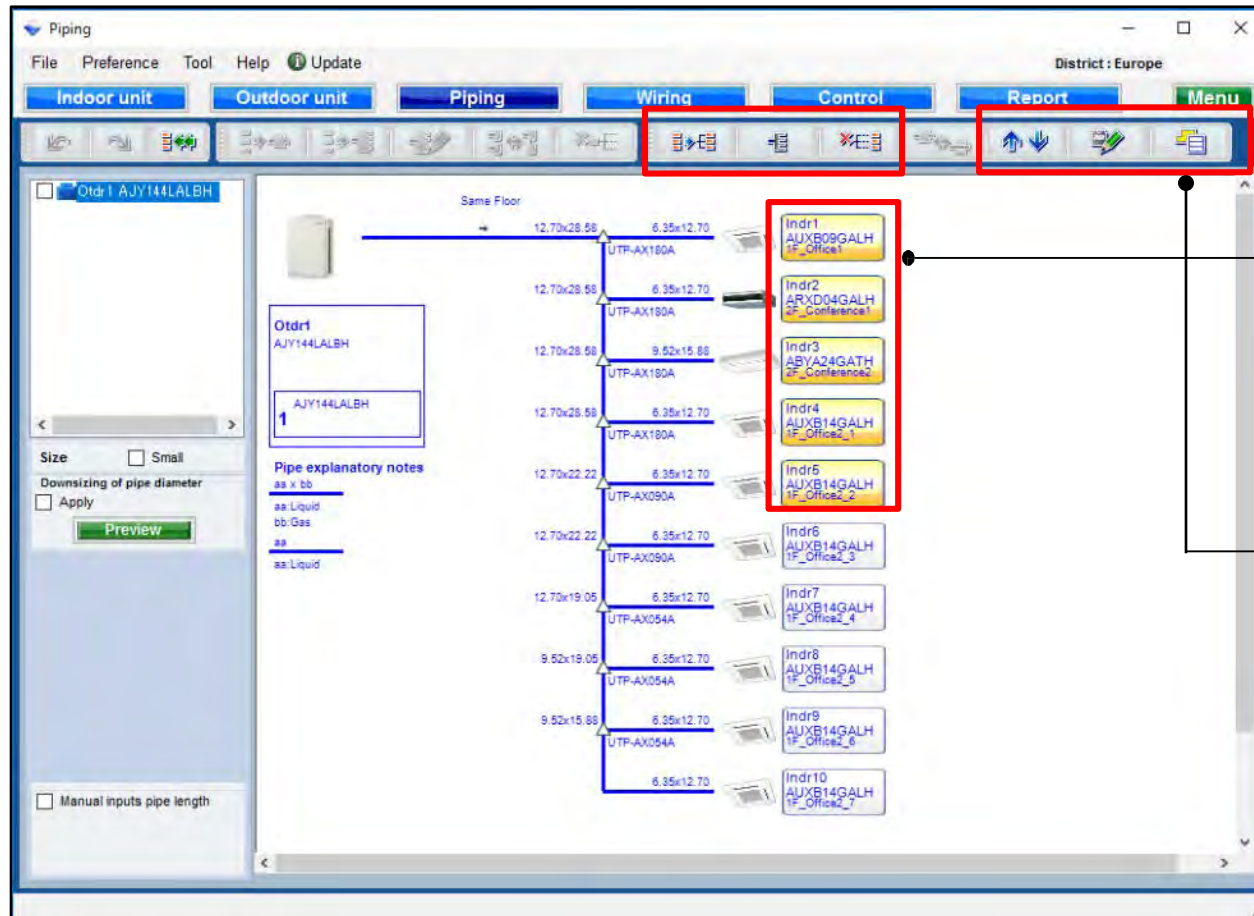


Press each button to edit.

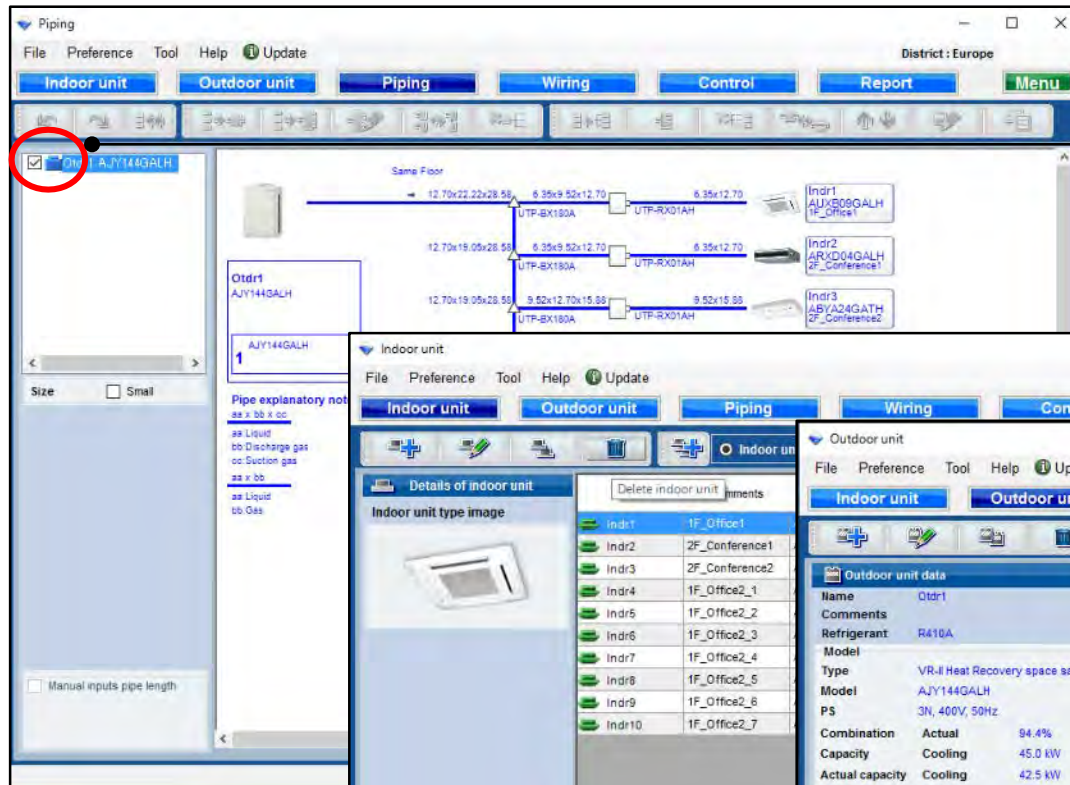
Piping settings

Design Simulator

For Heat Pump

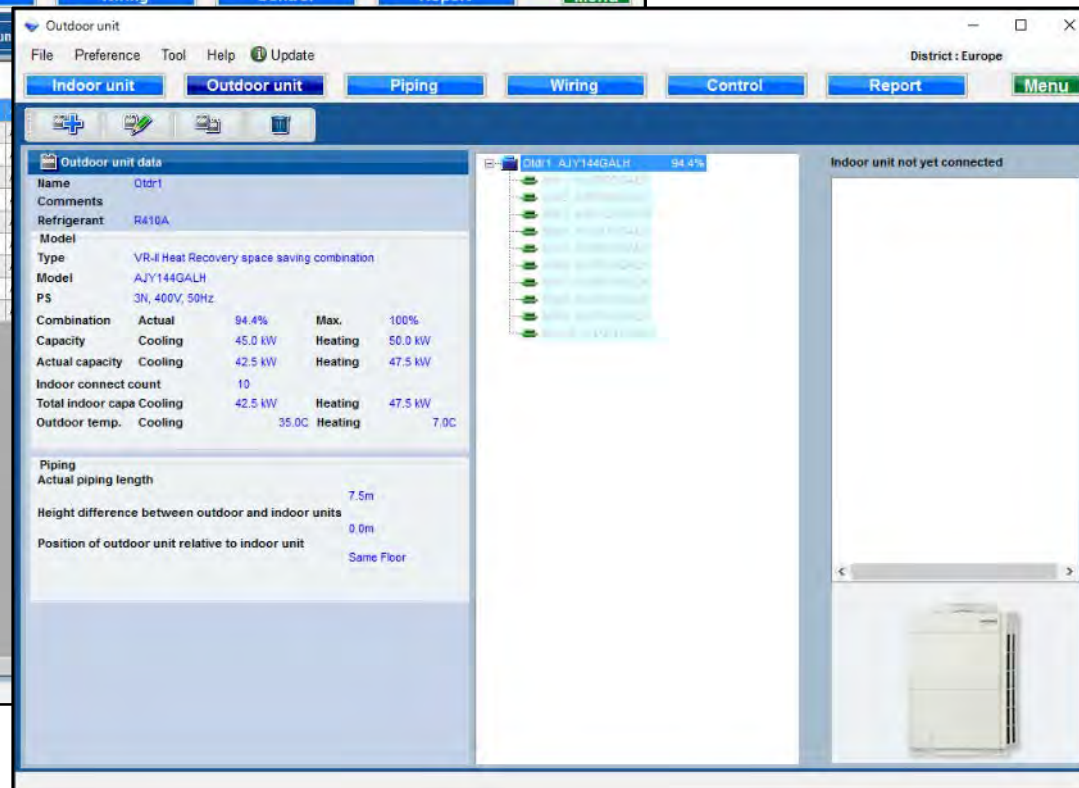
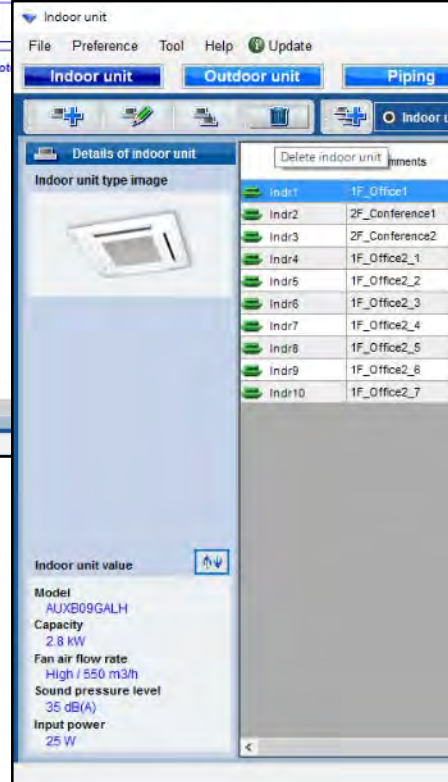


Refrigerant system confirmation function



Check the refrigerant system.

Checked refrigerant system cannot be edited at each screen.



Piping settings

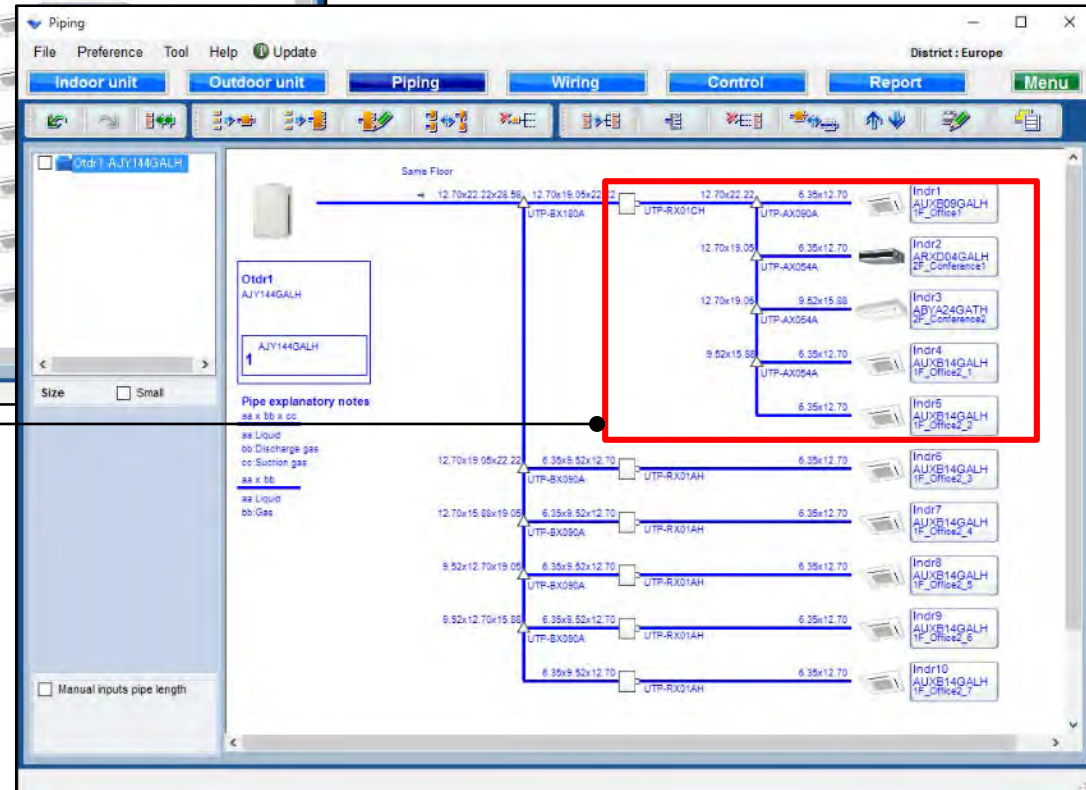
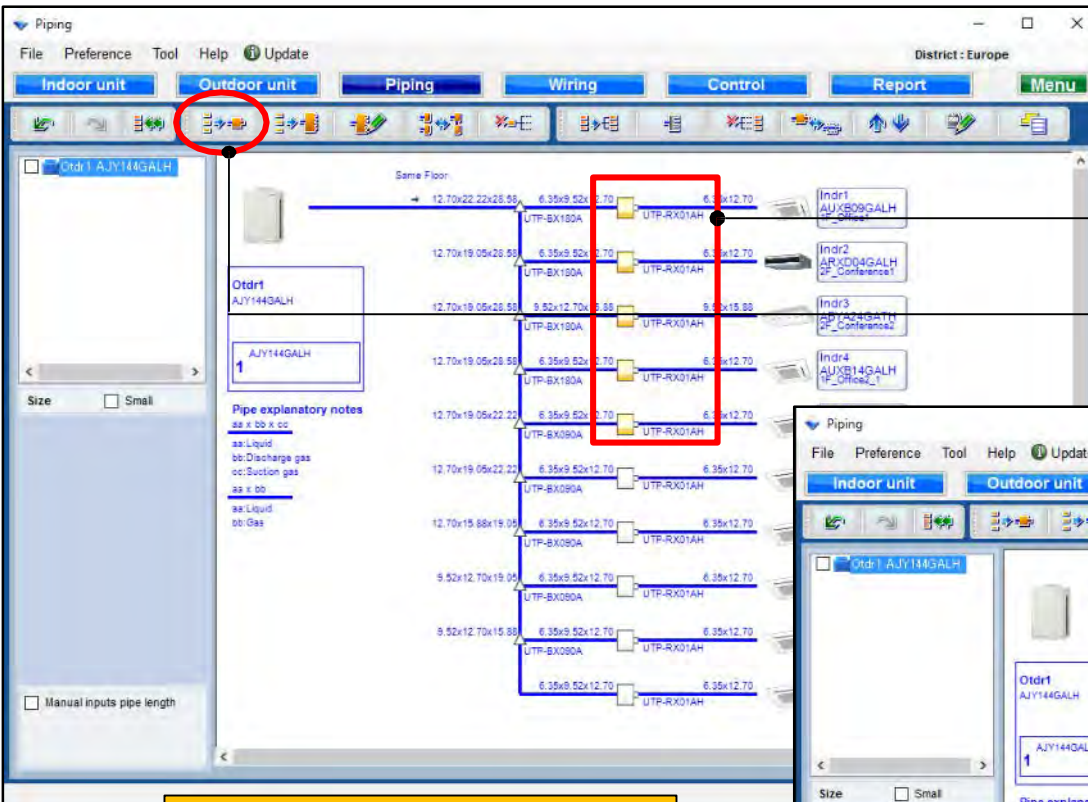
Design Simulator

RB Single function

Select RB units

Select "RB Single"

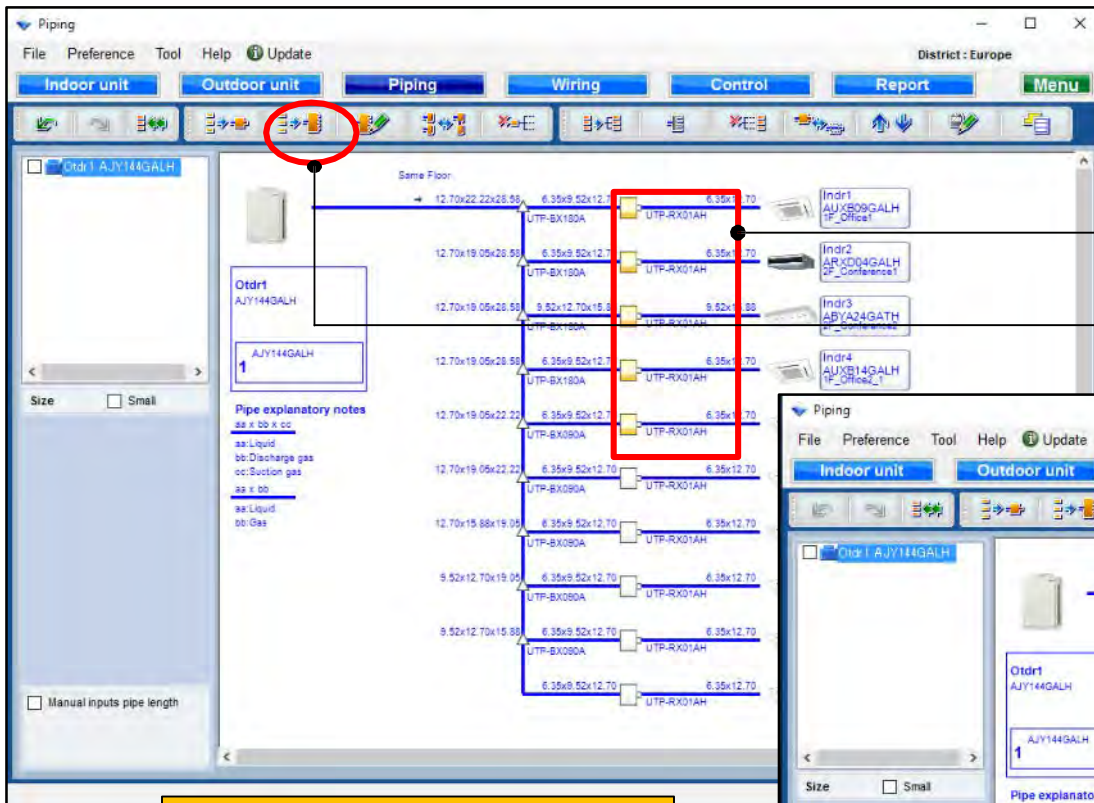
Combine indoor



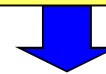
Piping settings

Design Simulator

RB multi function

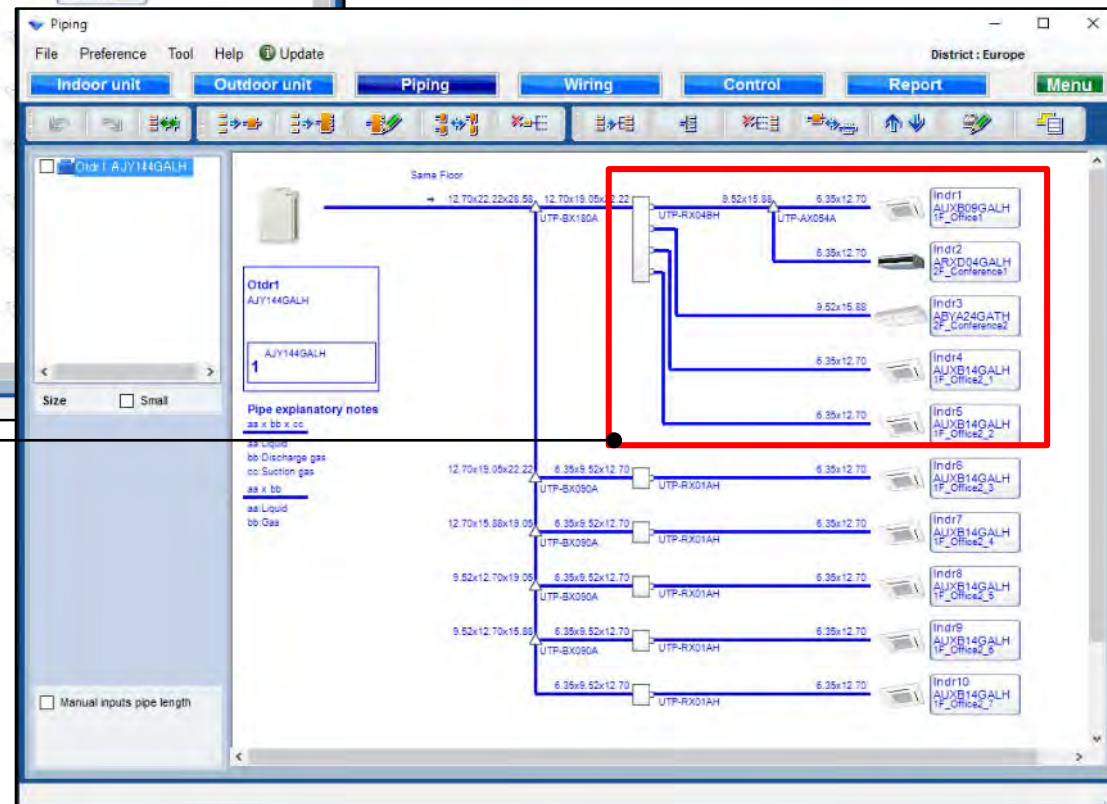


Select RB units

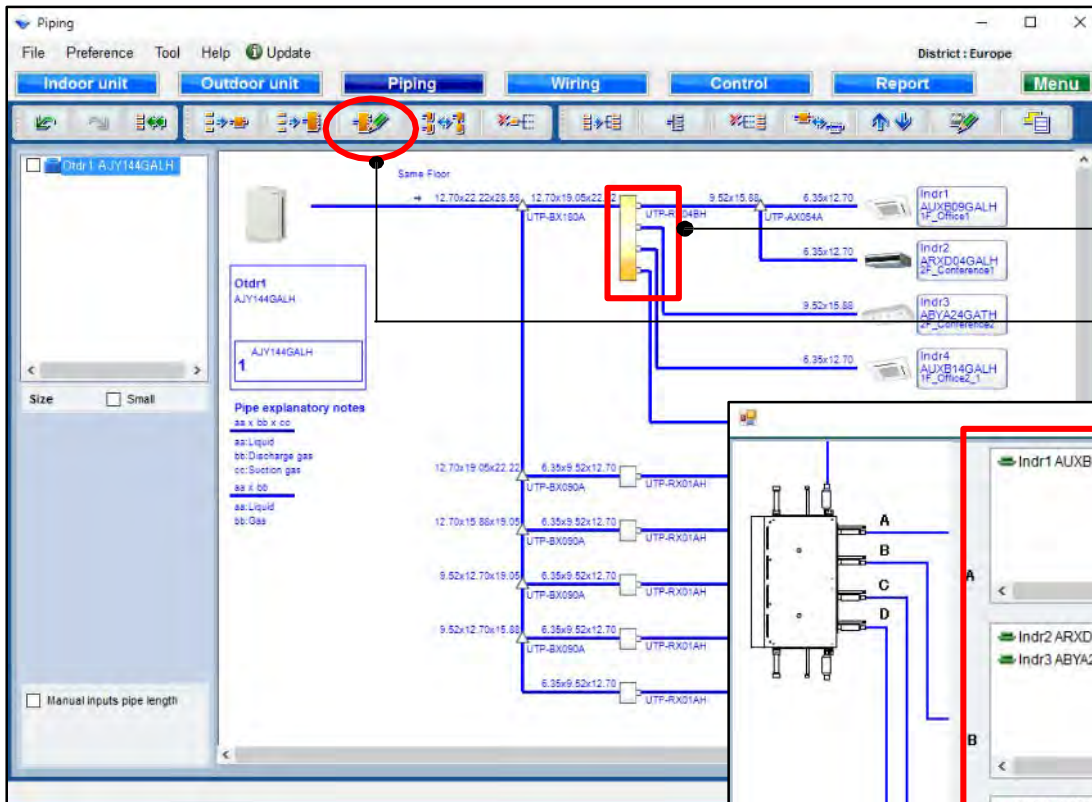


Select "RB multi"

Combine indoor



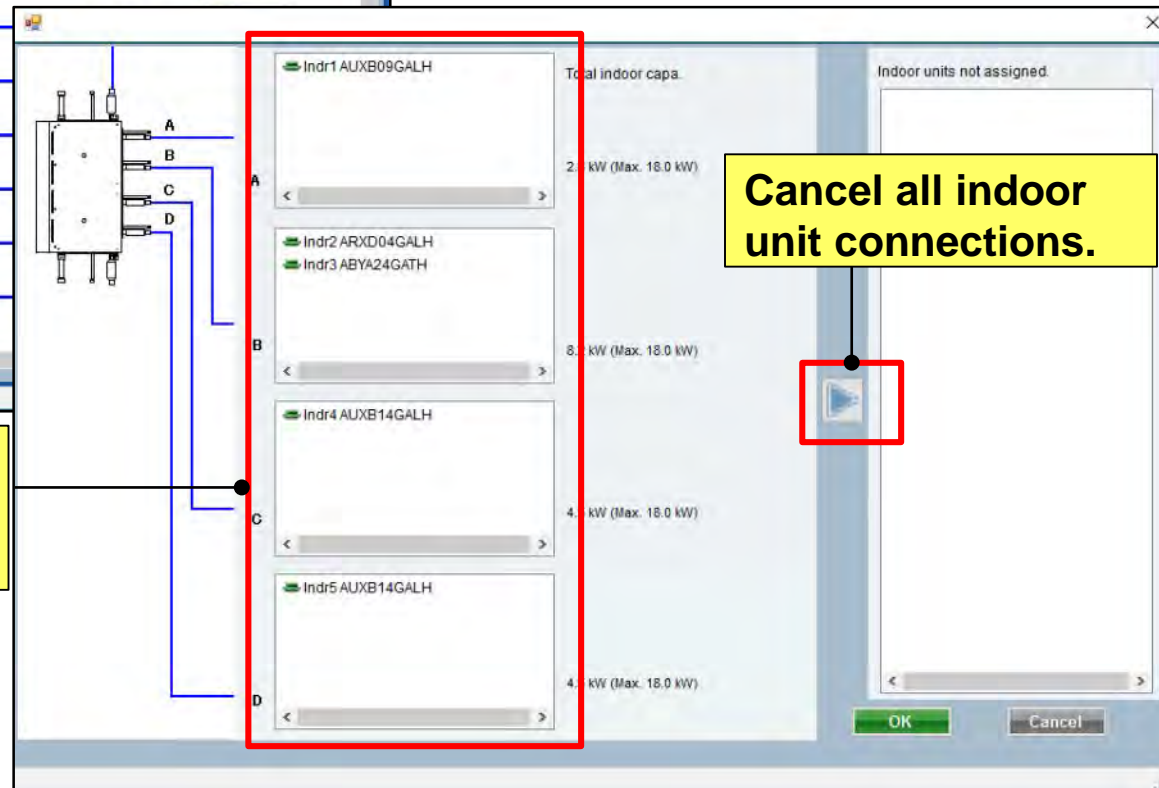
RB multi composition function



Select RB multi units

Select
"RB multi composition"

Indoor unit connection method
when RB multi is used can be
changed.

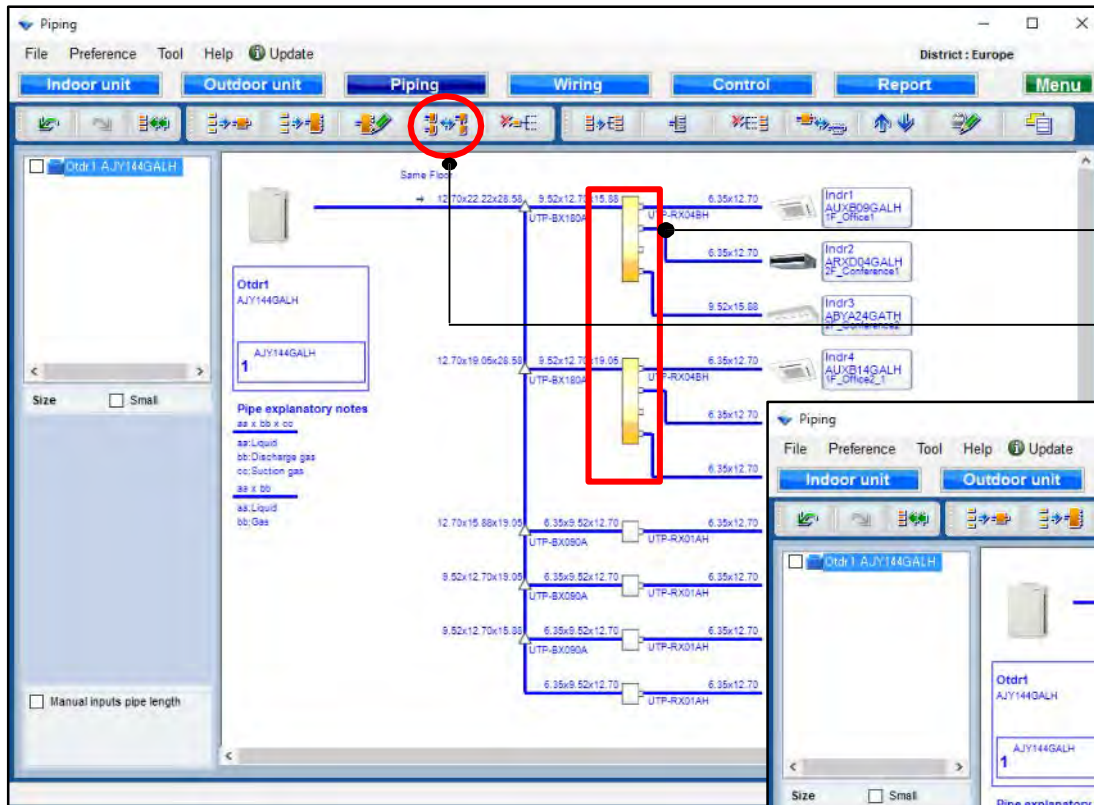


Cancel all indoor
unit connections.

Piping settings

Design Simulator

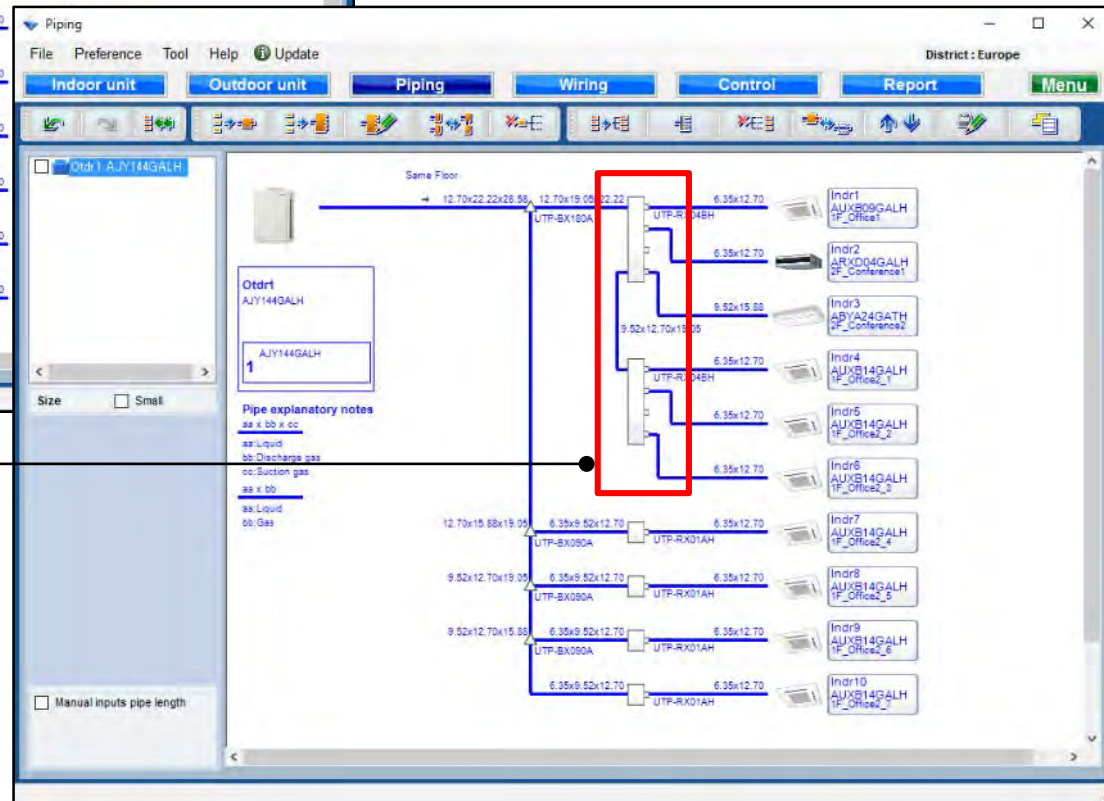
Combine RB multi function



Select RB multi units

Select
"Combine RB multi"

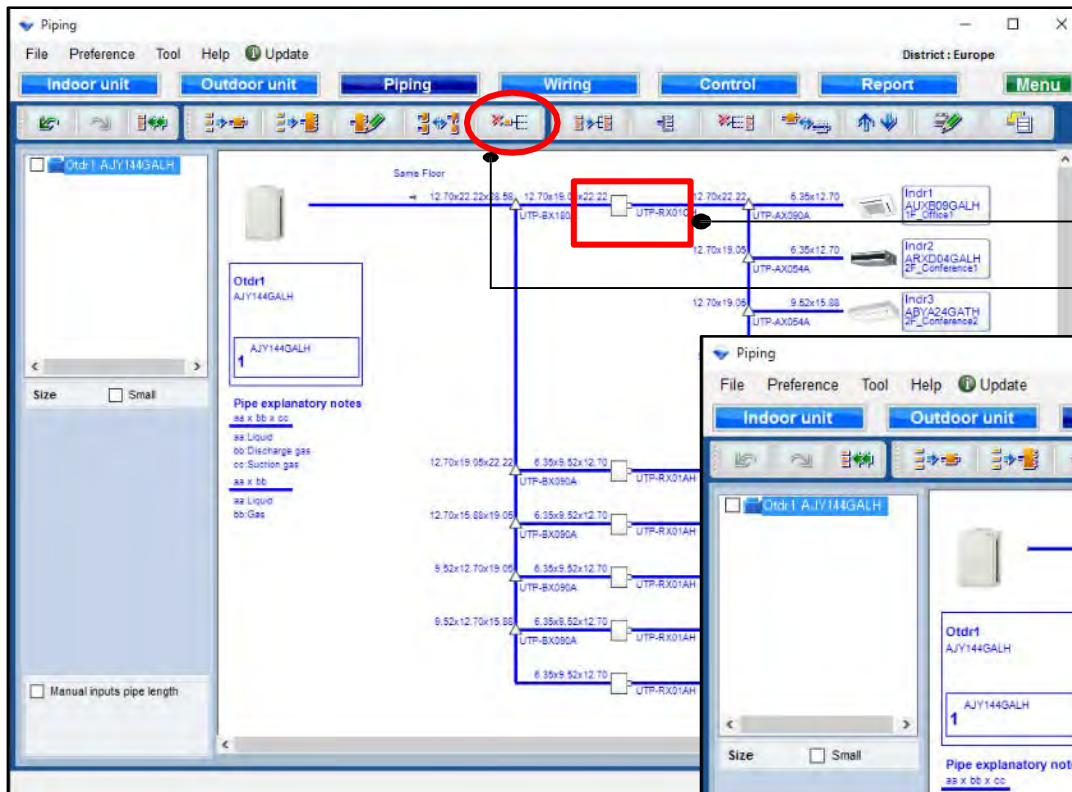
Combine 2 RB multi groups
into 1 group.



Piping settings

Design Simulator

Release combine function

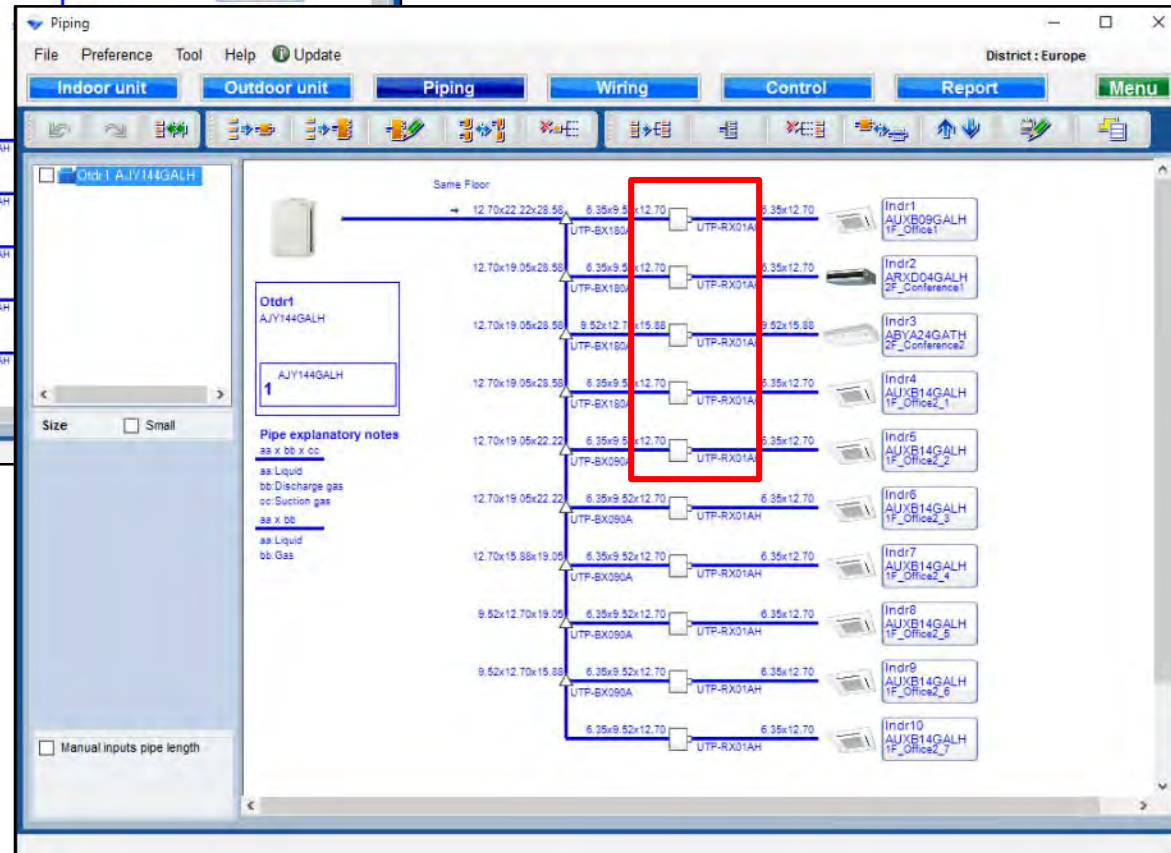


Select RB units

Select "Release combine"

Release combine

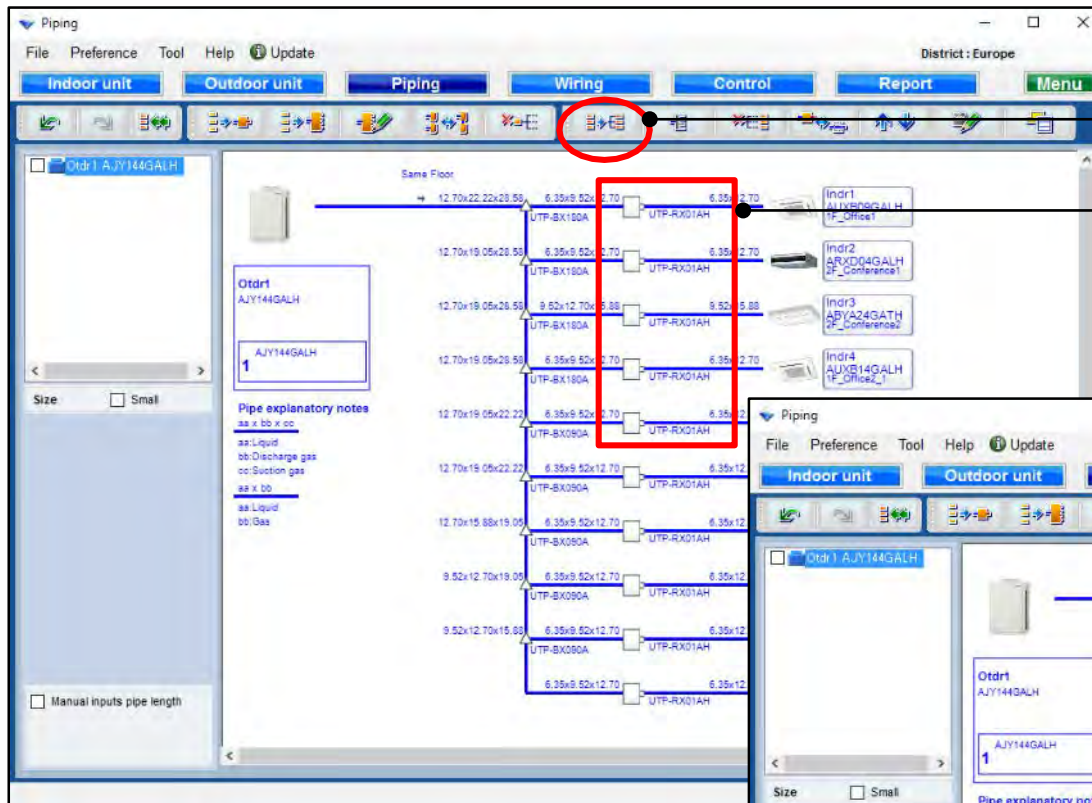
*Selected RB multi or all units combined by single can be released.



Piping settings

Design Simulator

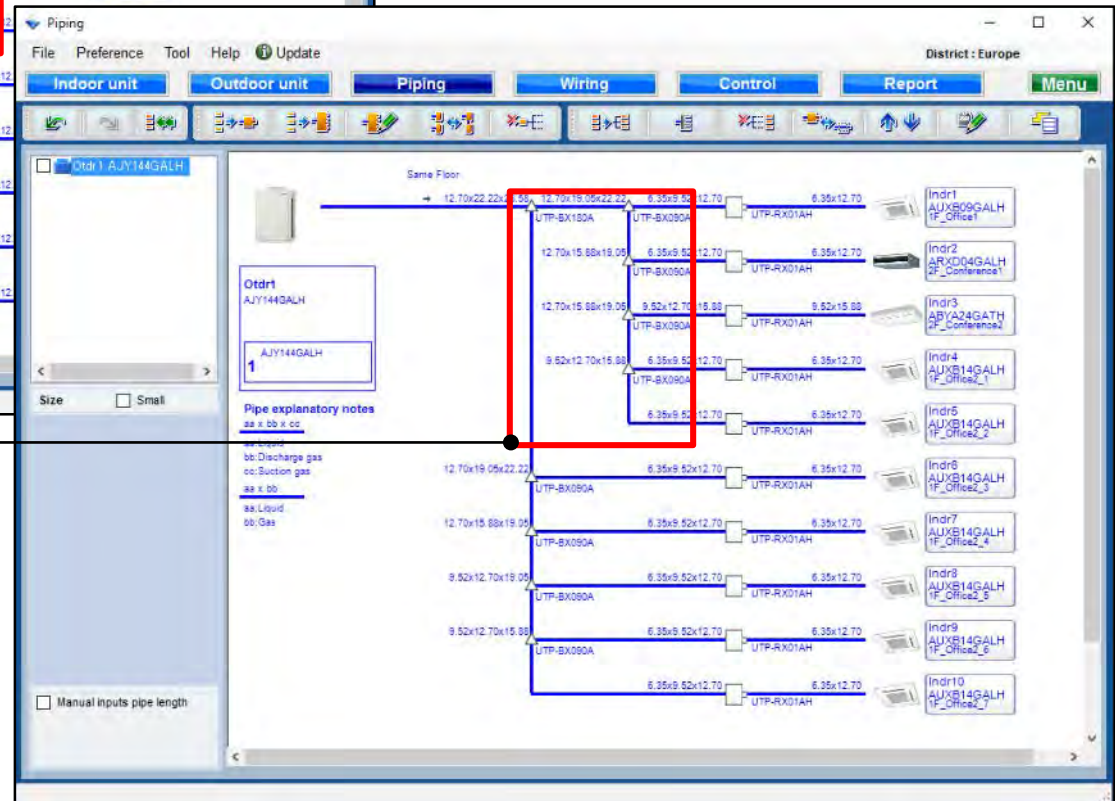
Combine indoor function



Select RB units

Select "Combine indoor"

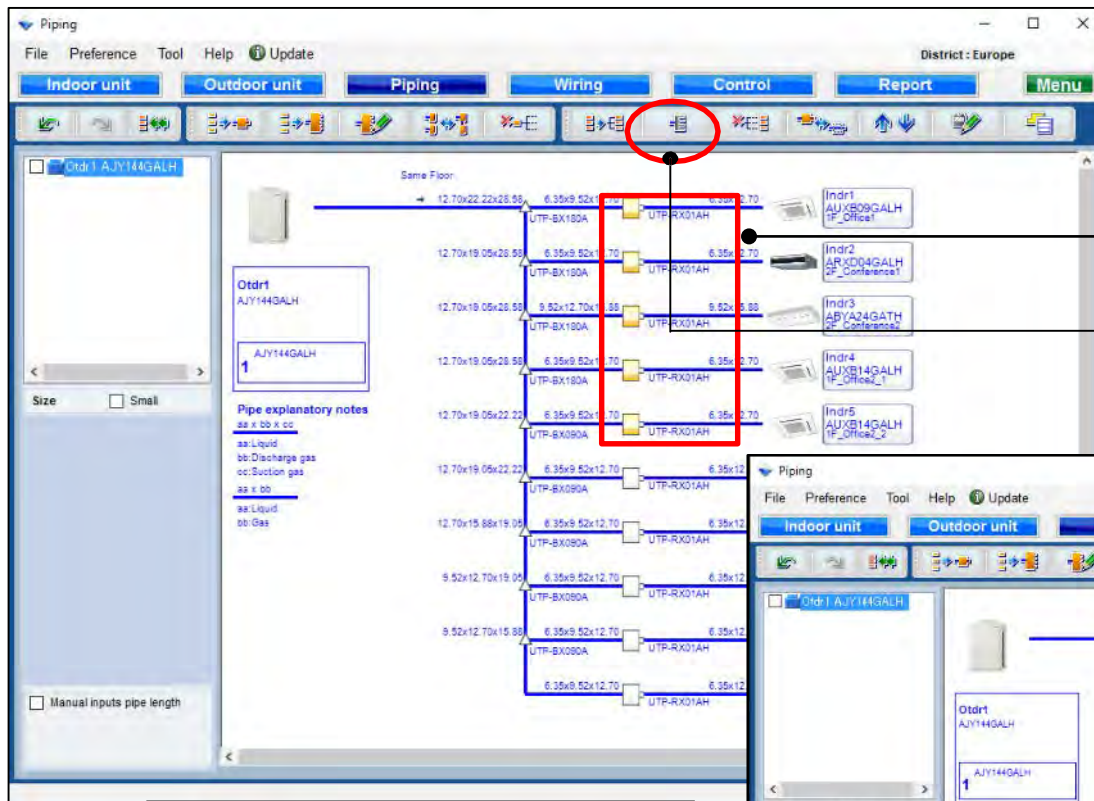
This part can be separated.



Piping settings

Design Simulator

Add header function

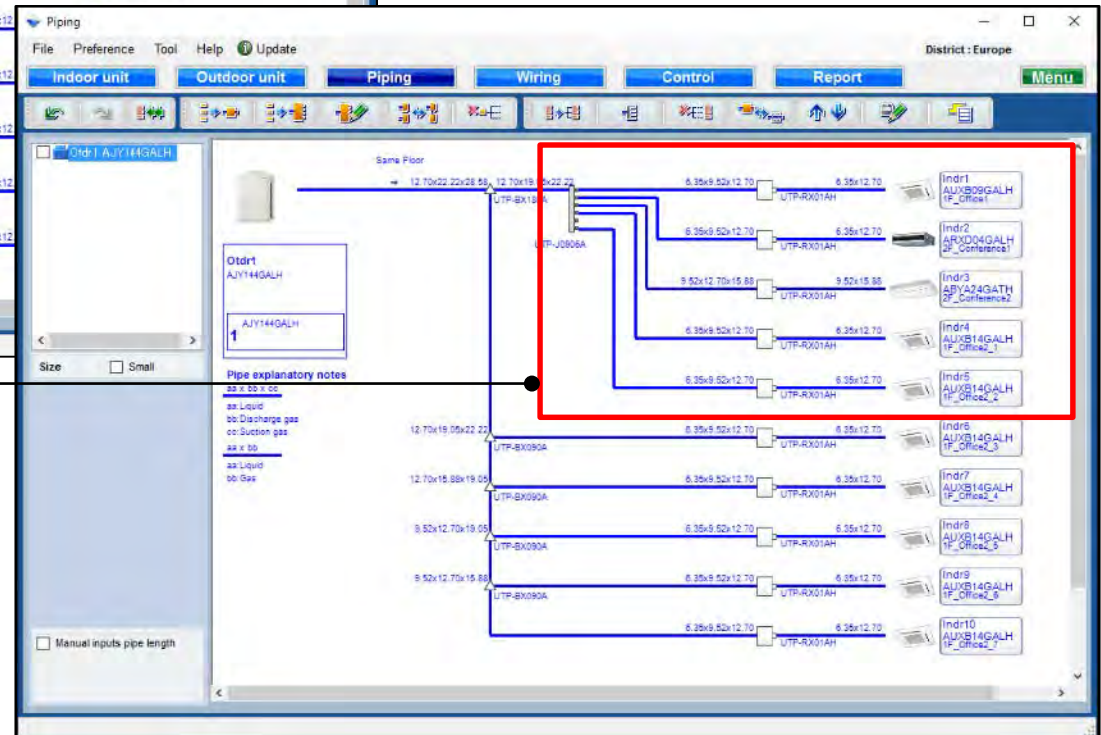


Select RB units



Select "Add header"

Create header combine



Piping settings

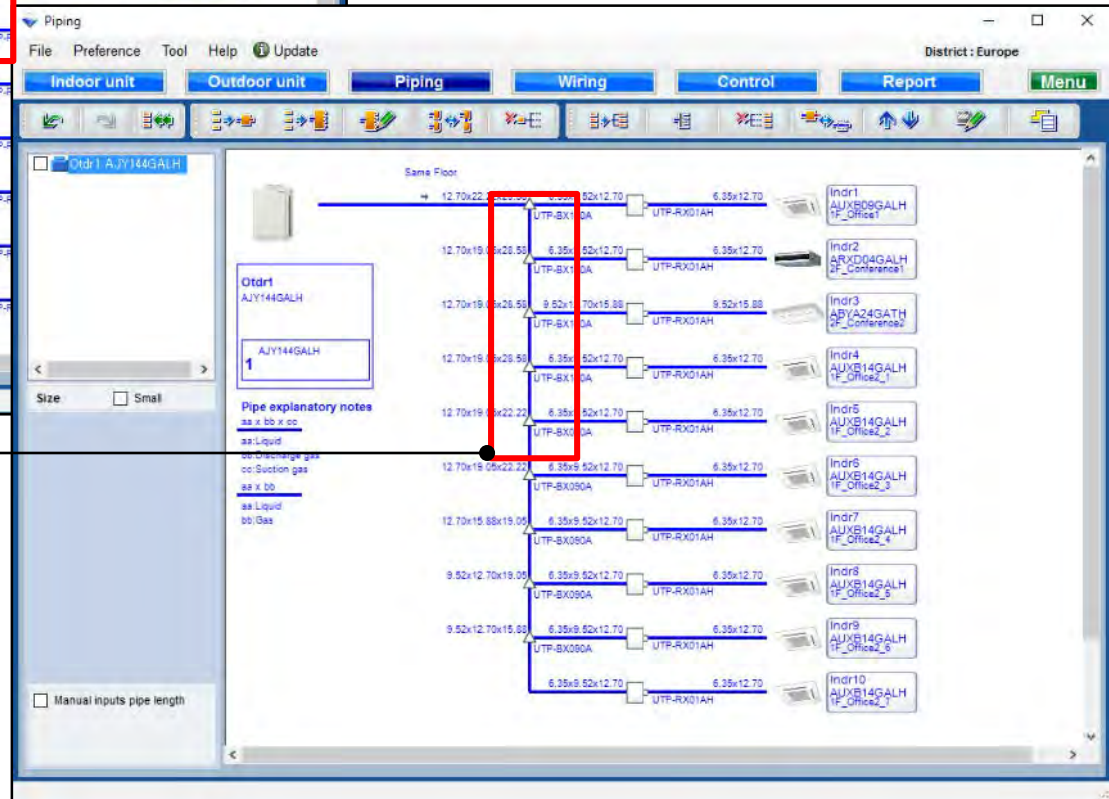
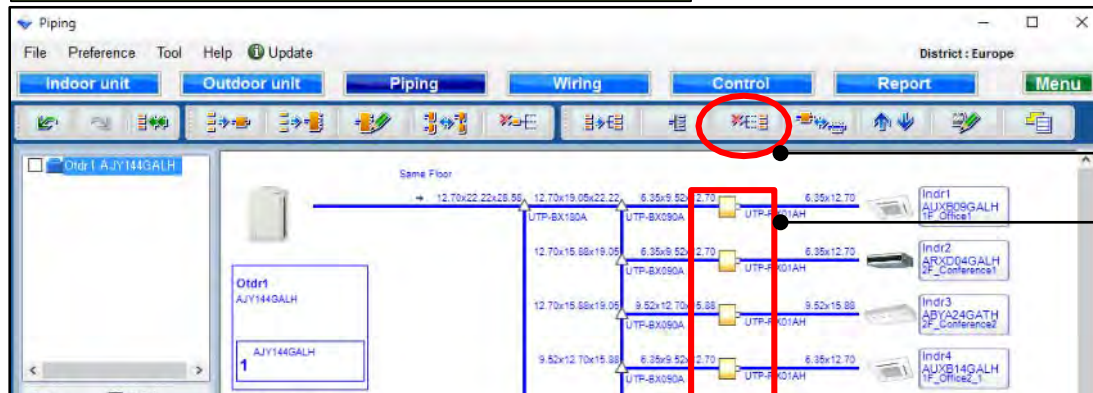
Design Simulator

Release combine function

Select RB units

Select "Release combine"

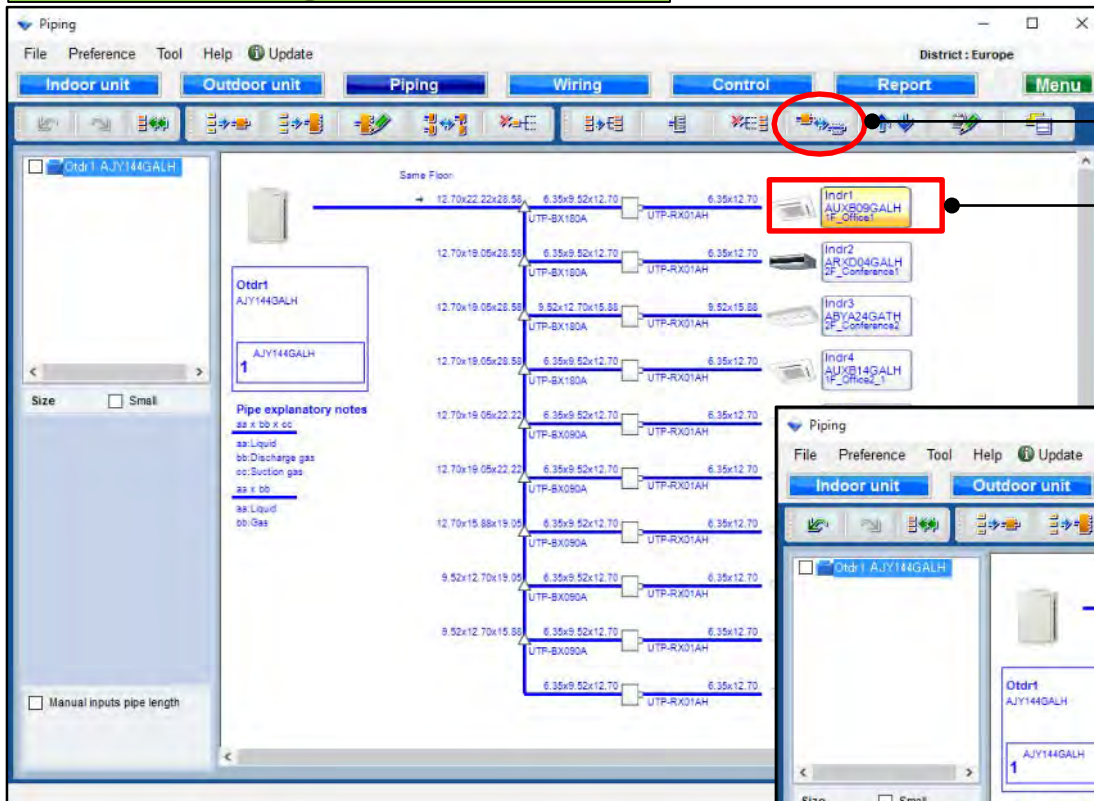
Release combine



Piping settings

Design Simulator

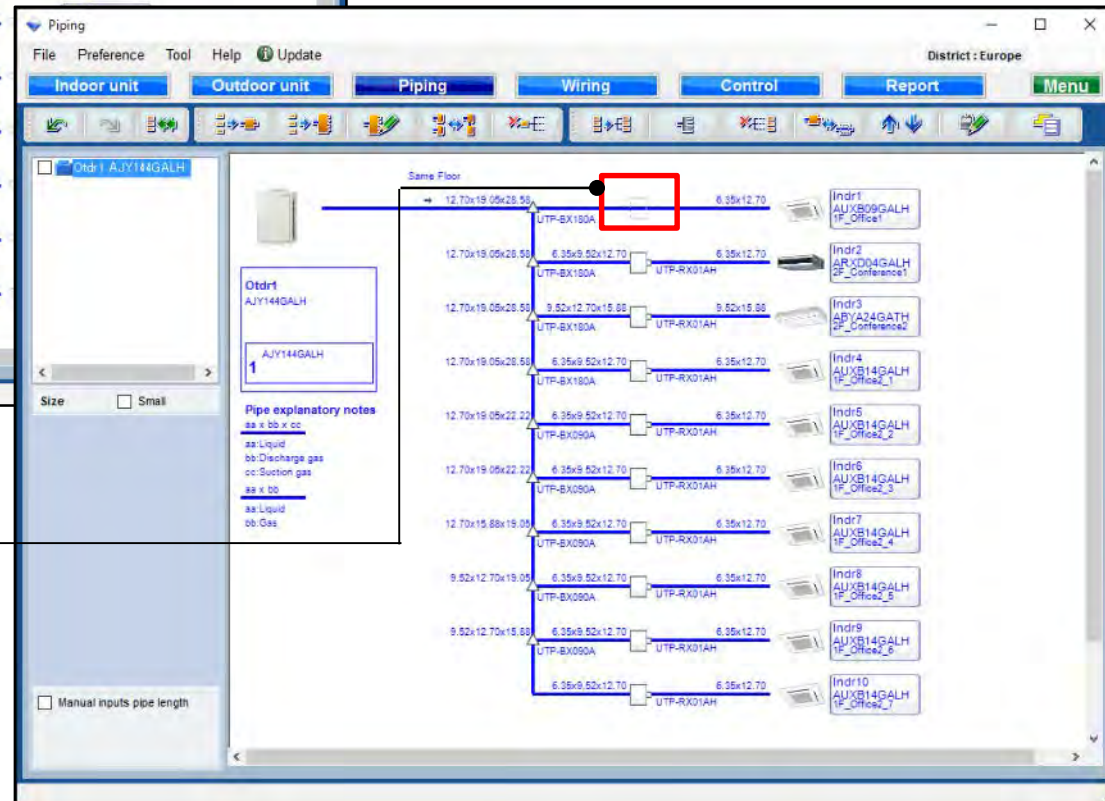
Release Single RB function



Select indoor unit

Select
“Release Single RB
(make cooling only IU)”

Less than 50% of all
capacities in all indoor
units can be changed to
Cooling only.



Move up the indoor combine order function

Select "Move up the indoor combine order"

Open Indoor movement

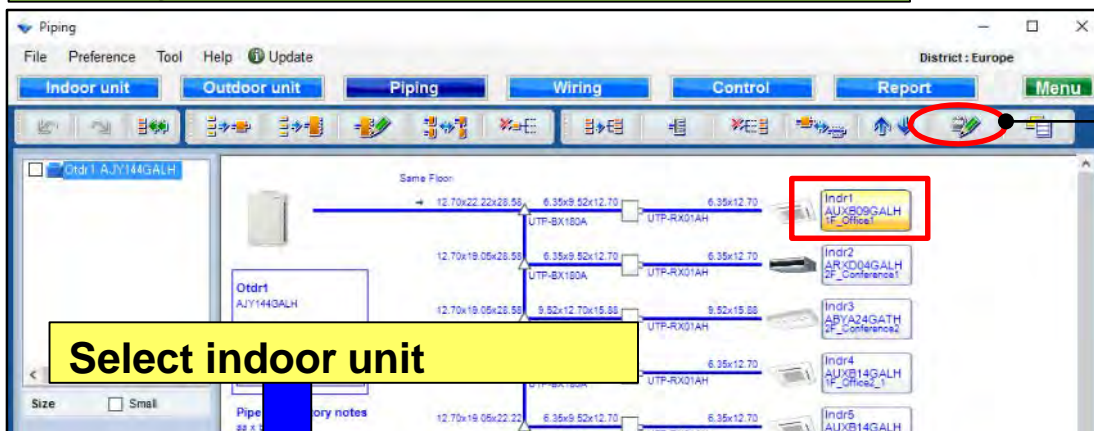
Press Check and then press OK

Move Indr3

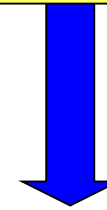
Move upward

Indr3 can be moved to the top

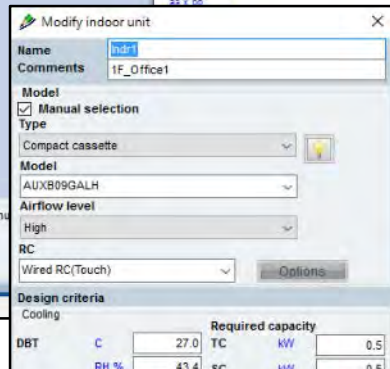
Modify Outdoor or indoor function



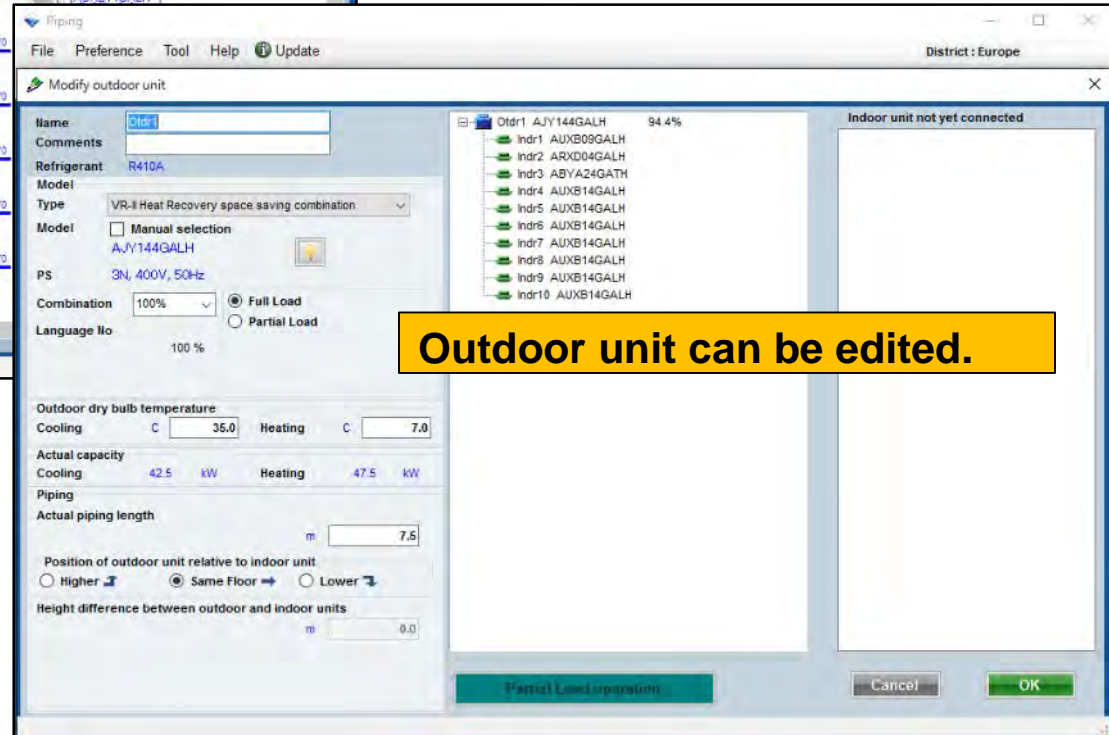
Select
“Modify Outdoor or indoor”



Select indoor unit

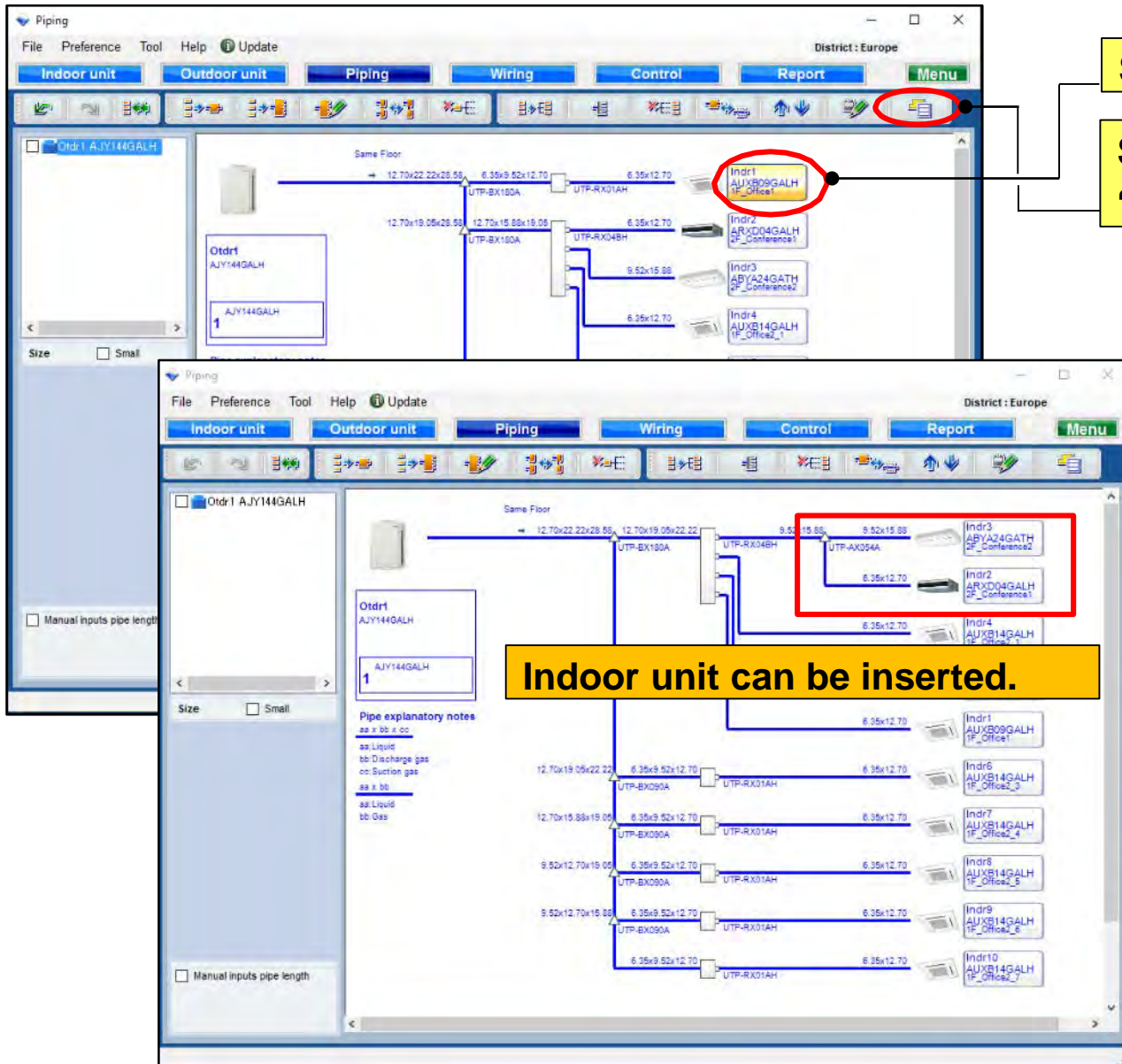


When selecting indoor unit to press “Modify Outdoor or indoor”, indoor unit can be edited.



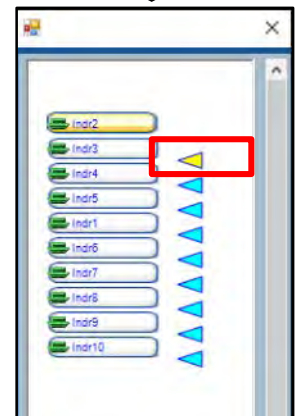
Outdoor unit can be edited.

Insert function



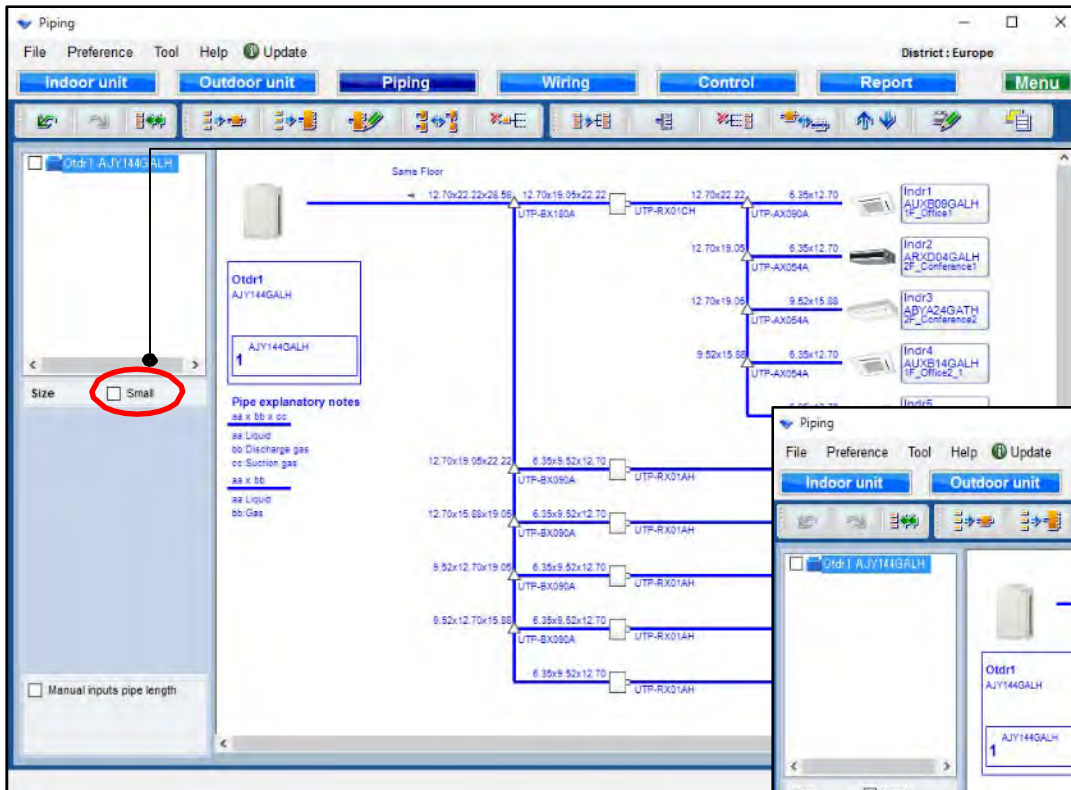
Select indoor unit

Select
"Remove, Insert or undo"



Specify the
insertion position
of the selected
indoor unit.

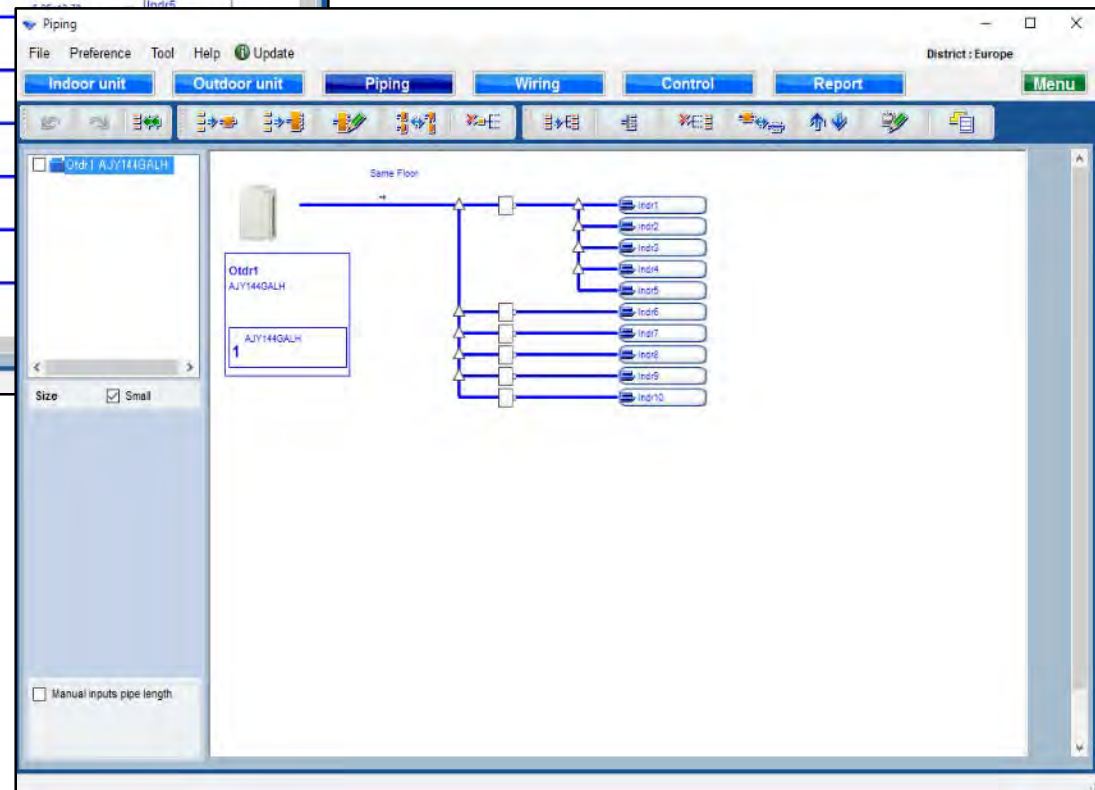
Small view function



Select "Small"



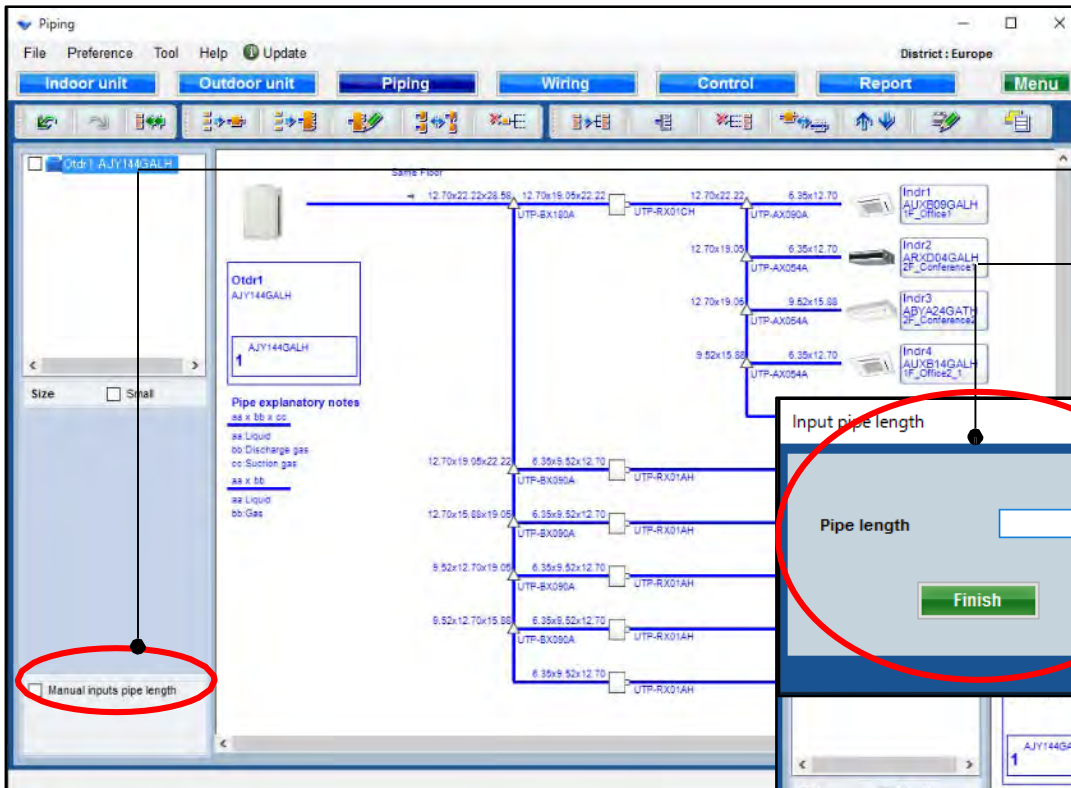
It changed to the small view.



Piping settings

Design Simulator

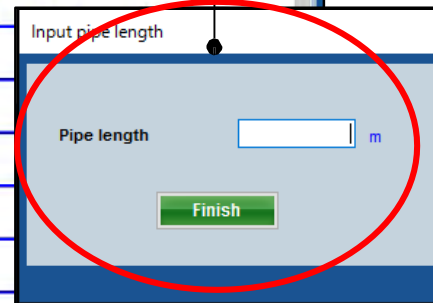
Pipe length set function (1/4)



Select "Manual input pipe length"



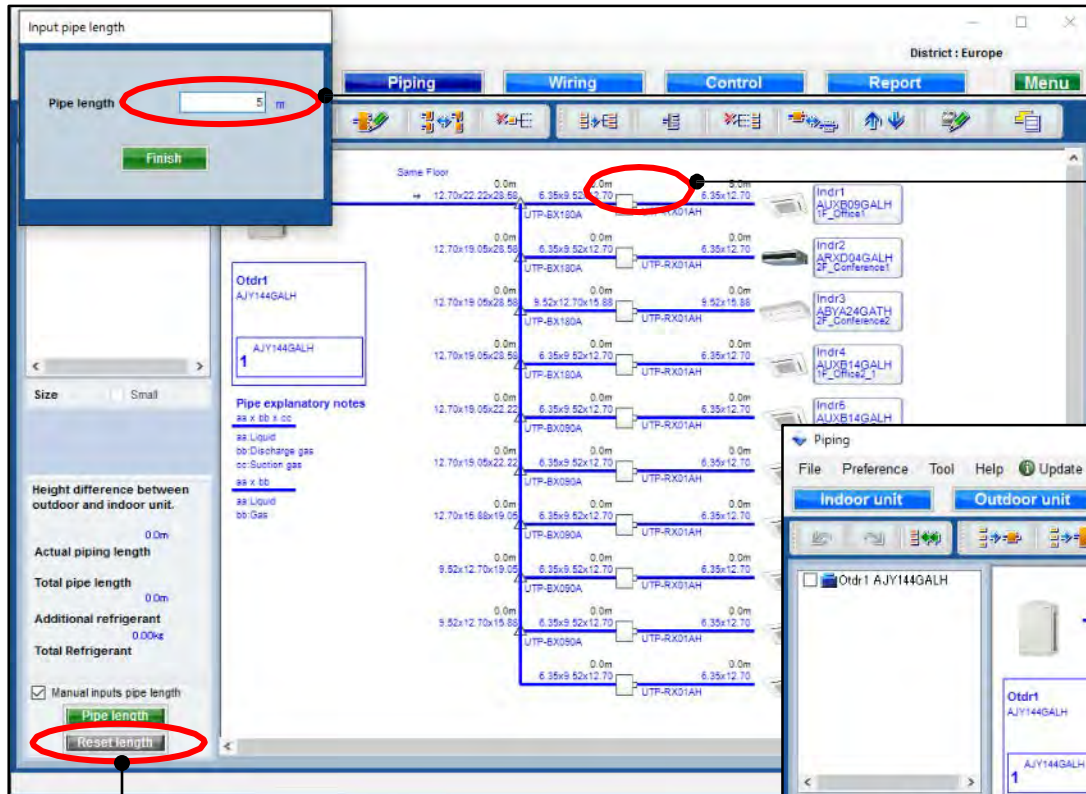
Open pipe length selection screen



Piping settings

Design Simulator

Pipe length set function (2/4)

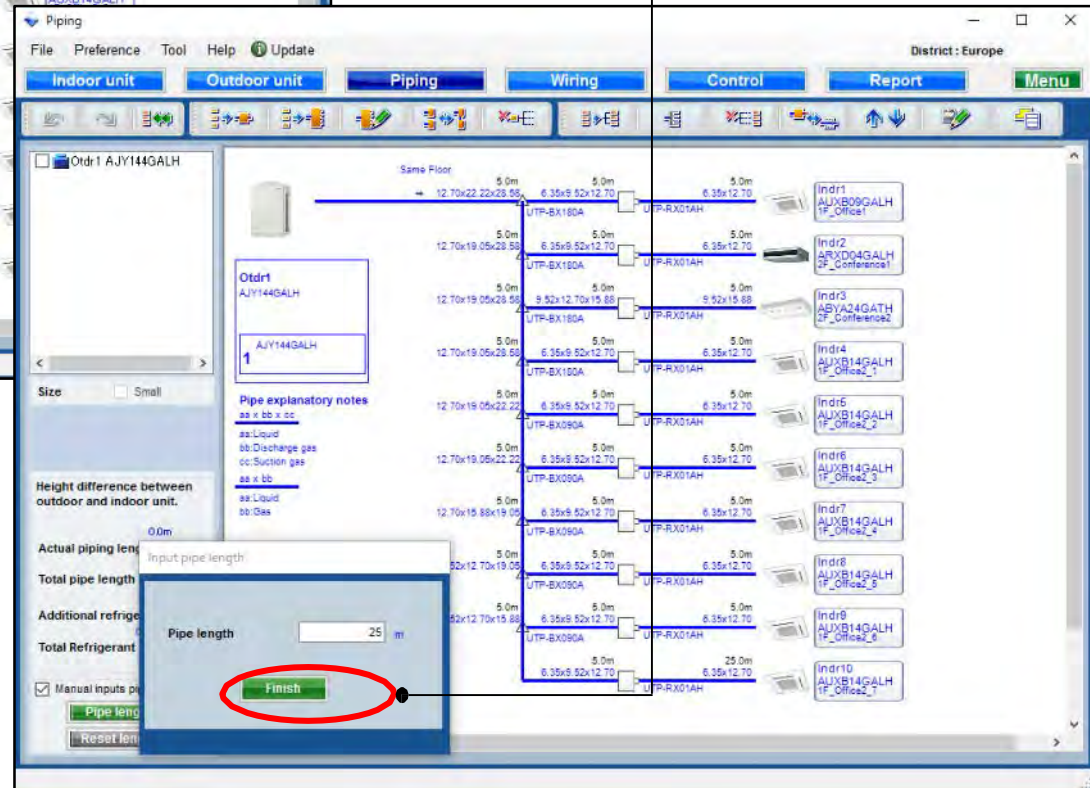


Input the pipe length

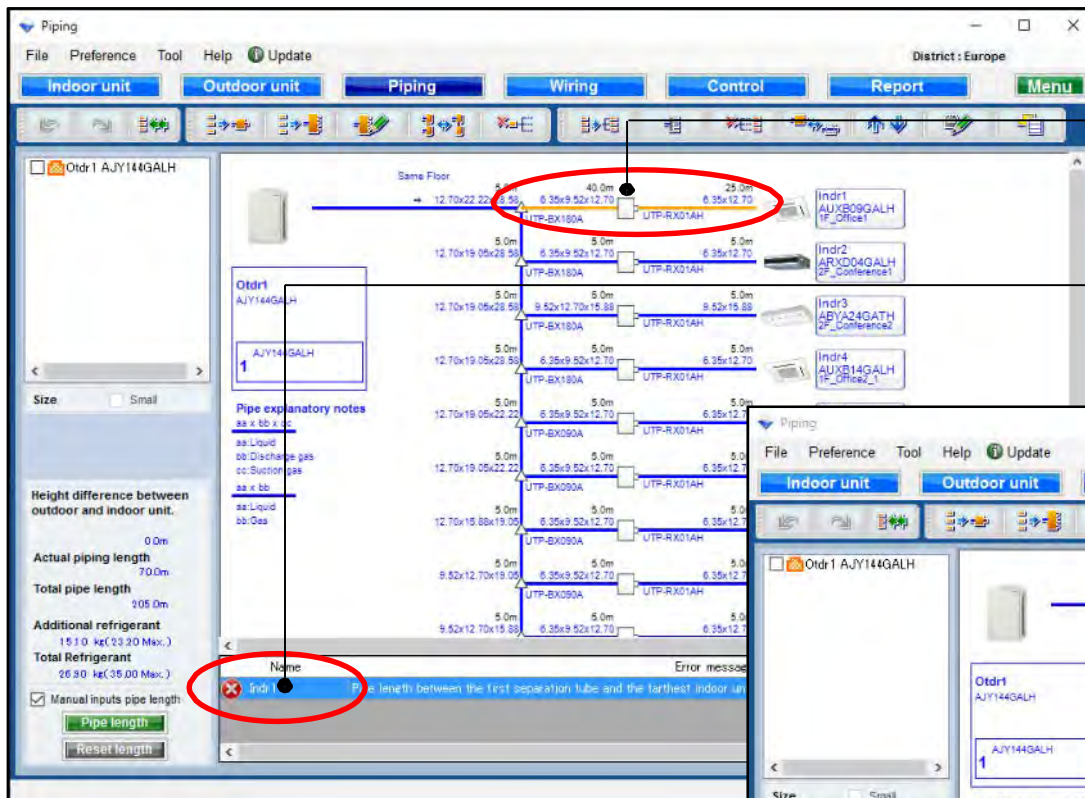
Select each pipe

After all lengths are registered ,
select "Finish"

Reset all input pipe lengths
to initial value

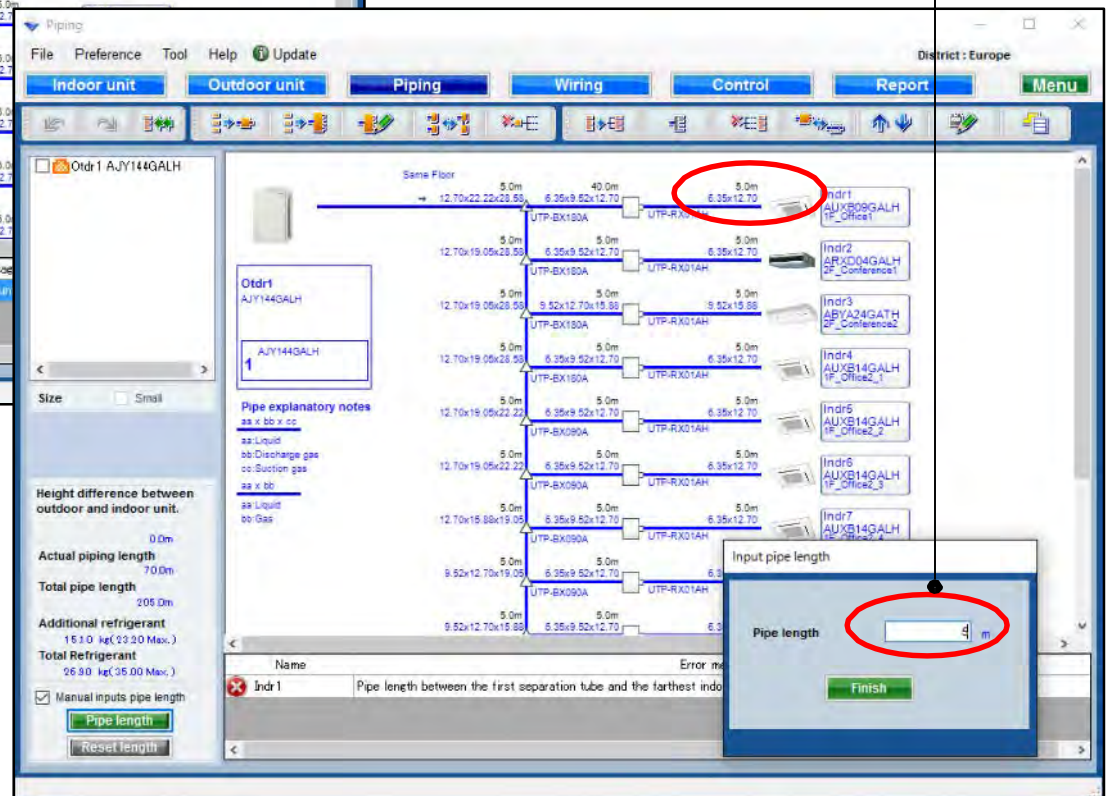


Pipe length set function (3/4)



A warning provides error information when information has not been entered or exceeds the restrictions.

Repeat again , then select “Finish”



Pipe length set function (4/4)

Piping

File Preference Tool Help Update District : Europe

Indoor unit Outdoor unit Piping Wiring Control Report Menu

Otdr1 AJY144GALH

Size ☐ Small

Height difference between outdoor and indoor unit.

Actual piping length 60.0m

Total pipe length 185.0m

Additional refrigerant 14.68 kg(23.20 Max.)

Total Refrigerant 26.48 kg(33.00 Max.)

☒ Manual inputs pipe length

Pipe length Reset length

**Actual piping length display :
declared and registered length**

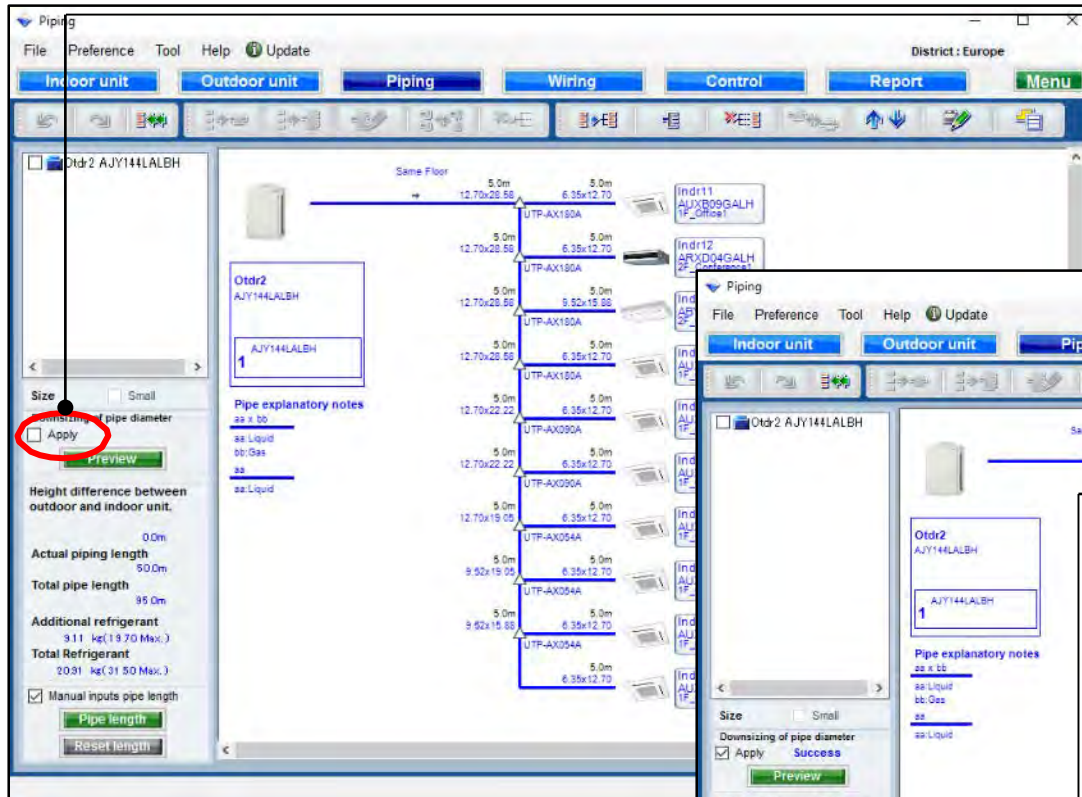
**Additional charge refrigerant amount are
automatically calculated and displayed.**

Piping settings

Design Simulator

Downsizing of pipe diameter function (1/2)

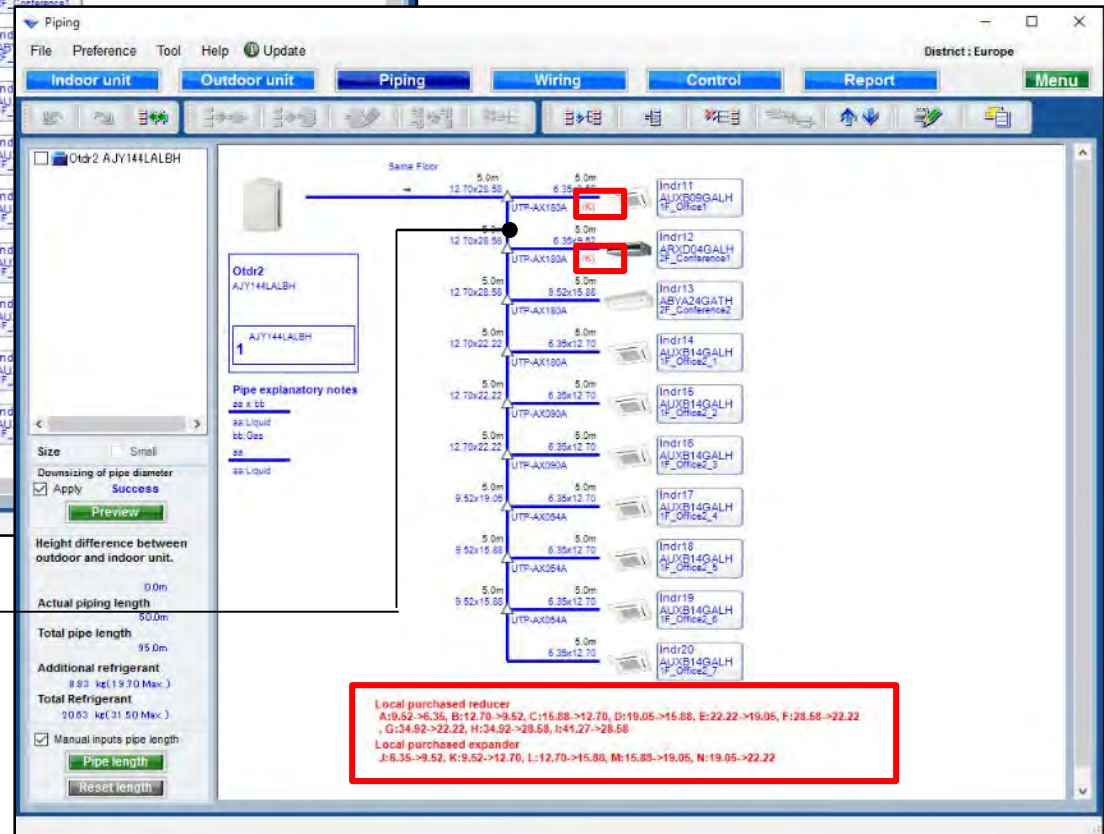
*V-III series only at target area



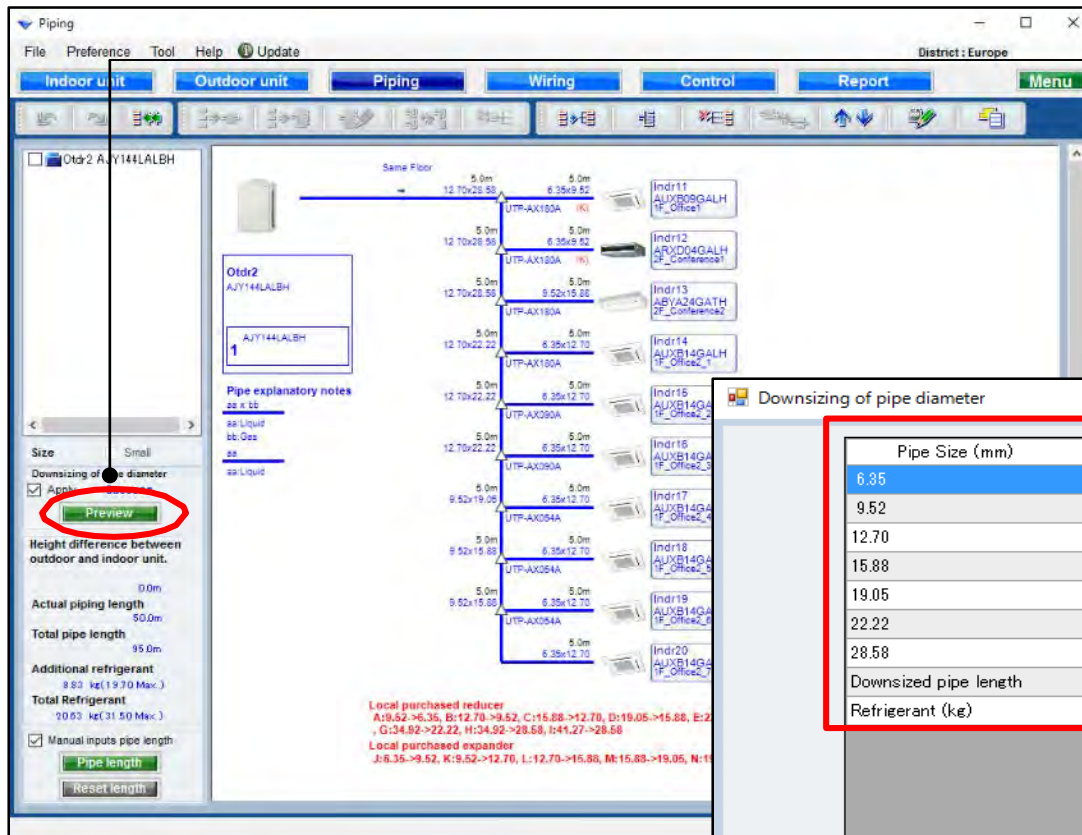
Select "Apply"

Downsize pipe diameter

When Reducer is necessary, message is displayed.



Downsizing of pipe diameter function (2/2)



Select "Preview"

Display "Downsizing of pipe diameter"

Downsizing of pipe diameter

Pipe Size (mm)	Normal (m)	Downsizing (m)	Difference (m)
6.35	45.0	45.0	0.0
9.52	15.0	30.0	15.0
12.70	80.0	65.0	-15.0
15.88	10.0	15.0	5.0
19.05	10.0	5.0	-5.0
22.22	10.0	15.0	5.0
28.58	20.0	15.0	-5.0
Downsized pipe length			25.0
Refrigerant (kg)	9.11	8.83	0.28

If you input the lengths of the pipes and their length are based on the following condition, you can downsize the pipe size.

- Between outdoor unit to outdoor unit branch kit :
Between outdoor unit branch kits or outdoor unit branch kit to first separation tube :
The length between master outdoor unit and the farthest indoor unit should be 70.0m or less.
- Between separation tubes :
The length between master outdoor unit and the farthest indoor unit should be 120.0m or less,
and the length between the first separation tube and the farthest indoor unit should be 60.0m or less.
- Between separation tube to indoor unit :

Display the difference before and after the downsizing of pipe and refrigerant amount.