

Piping settings

Design Simulator

Piping (Multi system)

Outdoor unit

File Preference Tool Help Update

Outdoor unit Piping Wiring

Outdoor unit data

Name Otdr1

Comments

Refrigerant R410A

Model

Type 2 Rooms Multi System

Model AOYG14LAC2

PS 1φ, 230V, 50Hz

Capacity Cooling 4.00 kW Heating 4.40 kW

Indoor connect count 2

Outdoor temp. Cooling 35.0C Heating 7.0C

Indoor temperati Cooling 27.0C Heating 20.0C

Piping

Total pipe length 10.0m

Select "Piping settings"

Show Piping system diagram

Piping

File Preference Tool Help Update

Outdoor unit Piping Wiring Report Menu

Otdr1 AOYG14LAC2

Actual capacity Cooling / Heating Otdr1

Unit B 0.0m 5.0m 6.35x9.52

Unit A 0.0m 5.0m 6.35x9.52

Indr1 ASYG07LMCA

Indr2 ASYG07LMCA

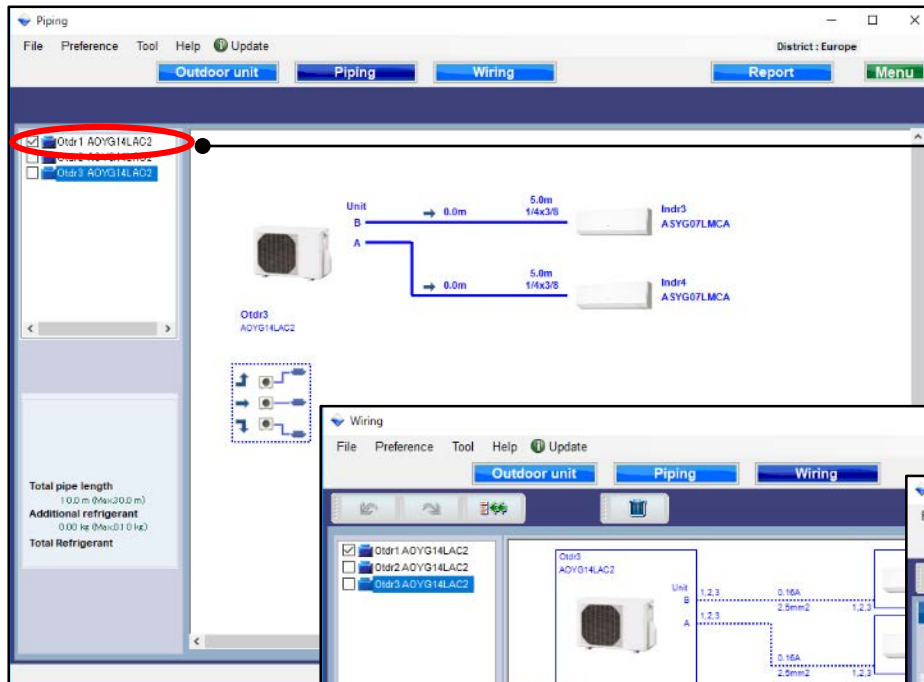
Otdr1 AOYG14LAC2

Total pipe length 10.0 m (Max:30.0 m)

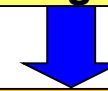
Additional refrigerant 0.00 kg (Max:0.10 kg)

Total Refrigerant

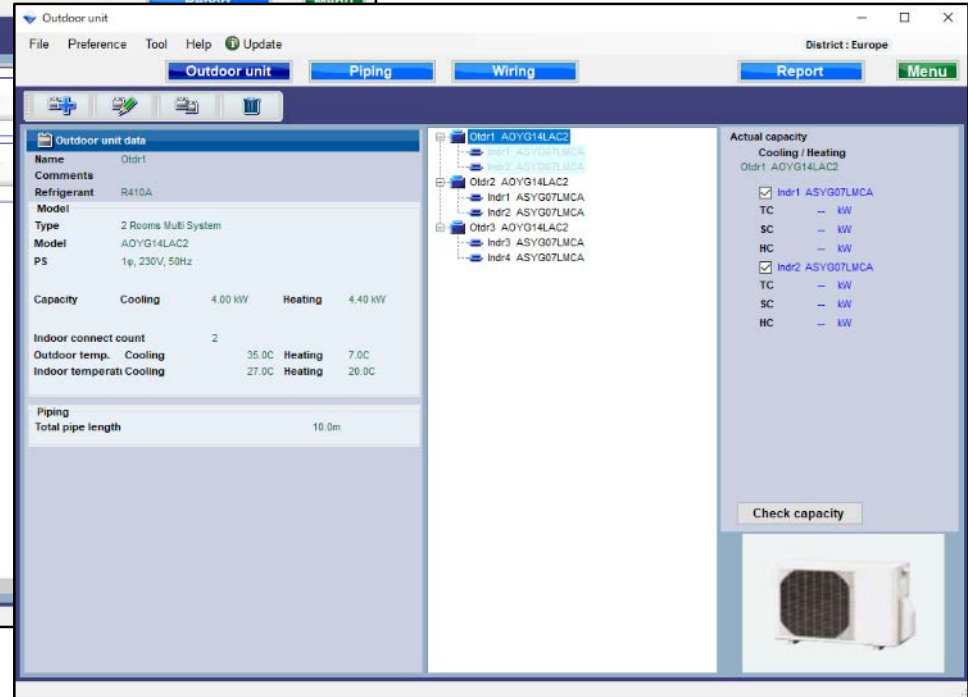
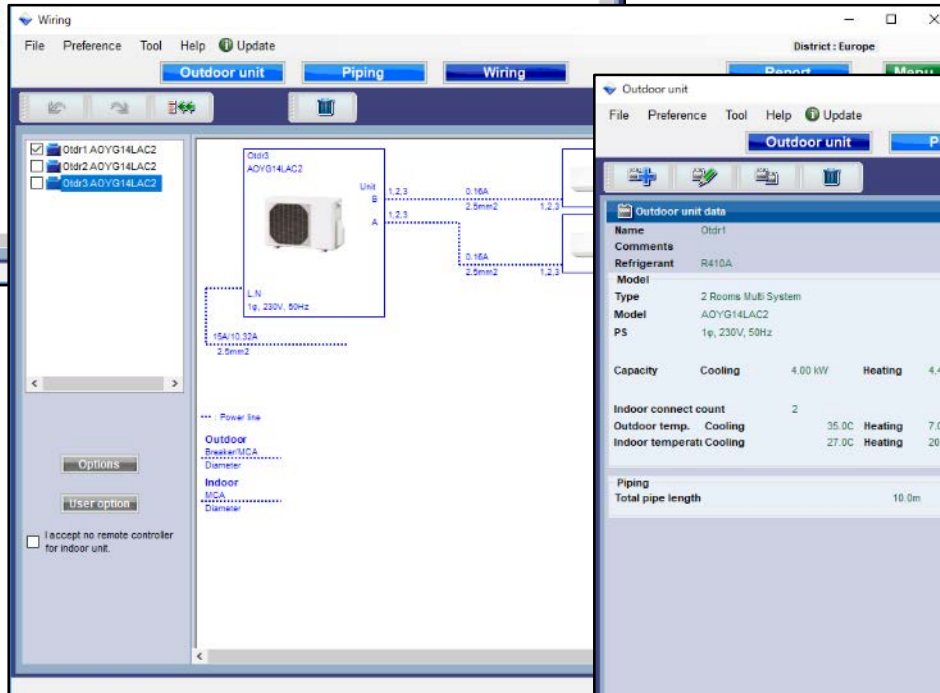
Refrigerant system decision (Multi system)



Check the refrigerant system



Checked refrigerant system cannot be edited on each screen



Piping settings

Design Simulator

Piping (Simultaneous multi system)

The image shows two windows from the Design Simulator software. The top window is the 'Outdoor unit' settings window, and the bottom window is the 'Piping' window.

Outdoor unit window:

- Menu: File, Preference, Tool, Help, Update
- Buttons: Outdoor unit, **Piping** (highlighted with a red circle), Wiring, Rep
- Outdoor unit data:
 - Name: Otdr1
 - Comments:
 - Refrigerant: R410A
 - Model:
 - Type: Simultaneous multi 3 phase Triple type
 - Model: AOYG54LATT
 - PS: 3N, 400V, 50Hz
- Capacity:
 - Cooling: 14.00 kW
 - Heating: 16.00 kW
- Indoor connect count: 3
- Outdoor temp. Cooling: 35.0C, Heating: 7.0C
- Indoor temperature Cooling: 27.0C, Heating: 20.0C
- Piping:
 - Total pipe length: 75.0m

Piping window:

- Menu: File, Preference, Tool, Help, Update
- Buttons: Outdoor unit, **Piping** (highlighted), Wiring, Report, Menu
- Left sidebar: Otdr1 AOYG54LATT
- Main area: Piping system diagram showing the outdoor unit (Otdr1 AOYG54LATT) connected to three indoor units (Indr1, Indr2, Indr3) via a manifold. The diagram includes pipe lengths and specifications:
 - Outdoor unit to manifold: 30.0m, 9.52x15.88, UTP-SX354
 - Manifold to Indr1: 10.0m, 15.0m, 6.35x12.70
 - Manifold to Indr2: 10.0m, 15.0m, 6.35x12.70
 - Manifold to Indr3: 10.0m, 15.0m, 6.35x12.70
- Bottom left sidebar:
 - Total pipe length: 75.0 m (Max: 75.0 m)
 - Additional refrigerant: 1.35 kg (Max: 2.25 kg)
 - Total Refrigerant:

Annotations:

- A yellow box with the text "Select 'Piping settings'" and a blue arrow pointing to the 'Piping' button in the Outdoor unit window.
- An orange box with the text "Show Piping system diagram" and a blue arrow pointing to the Piping window.