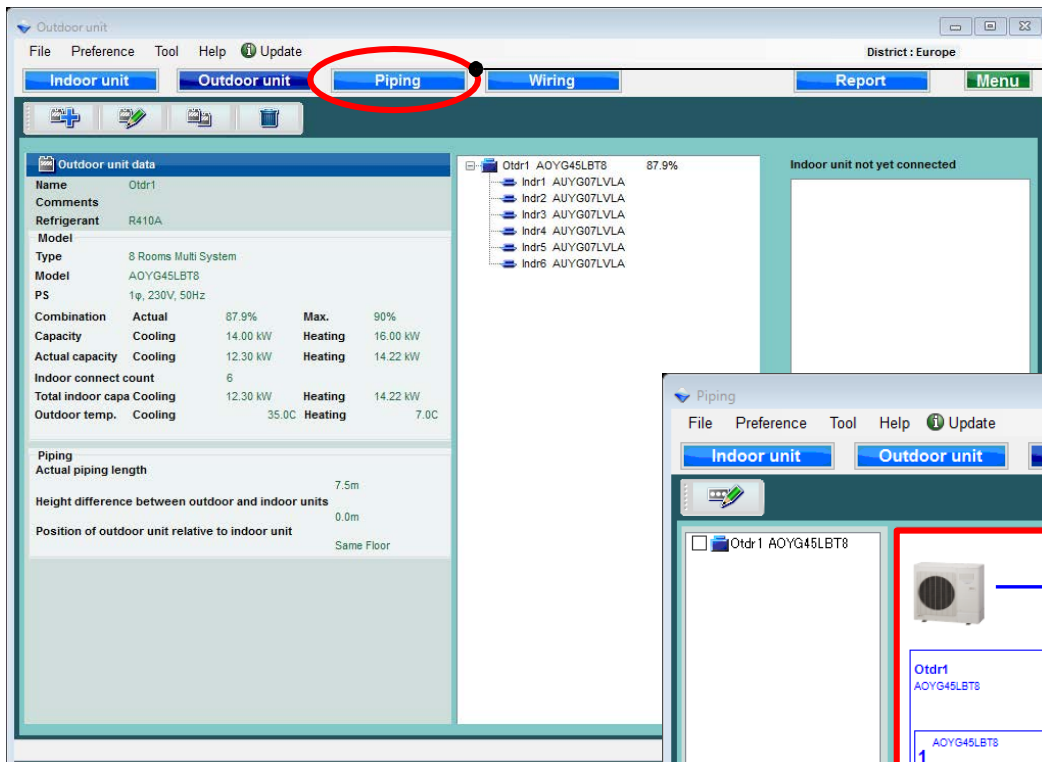


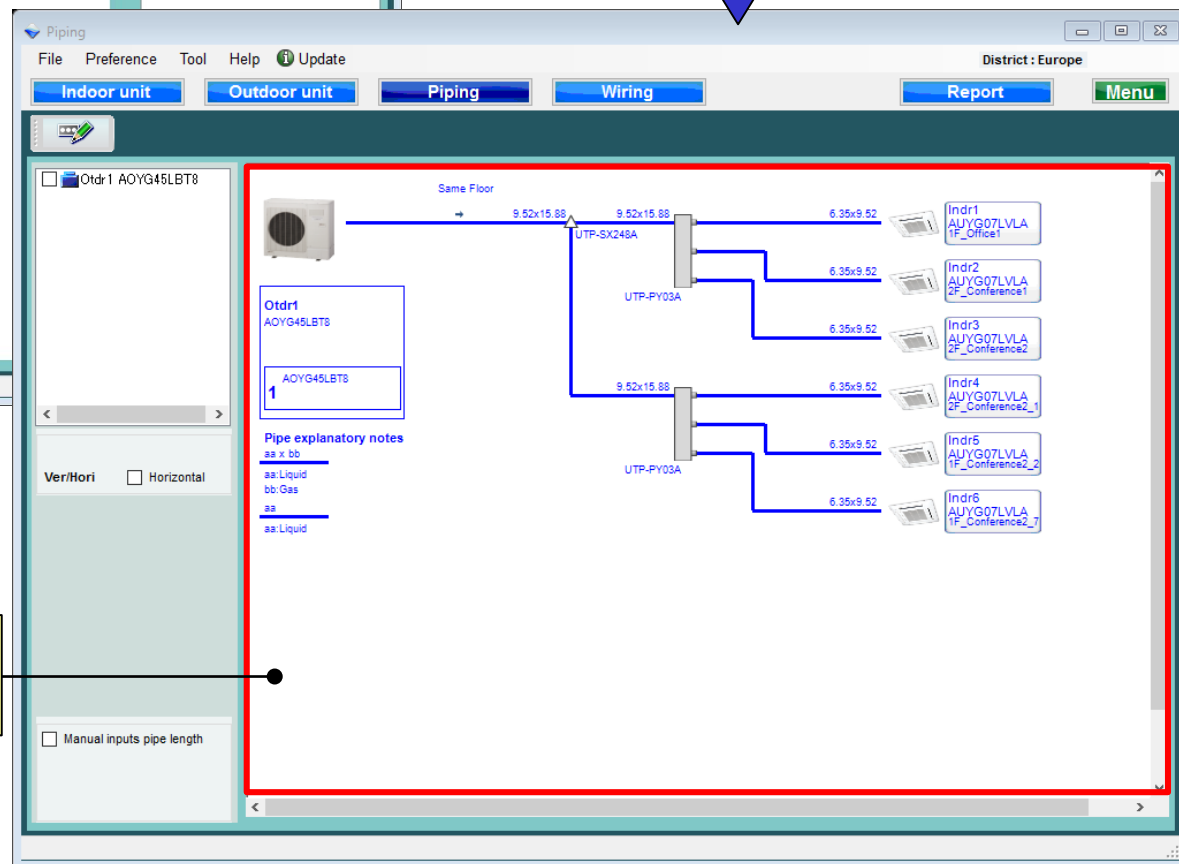
管線設定

選機軟體



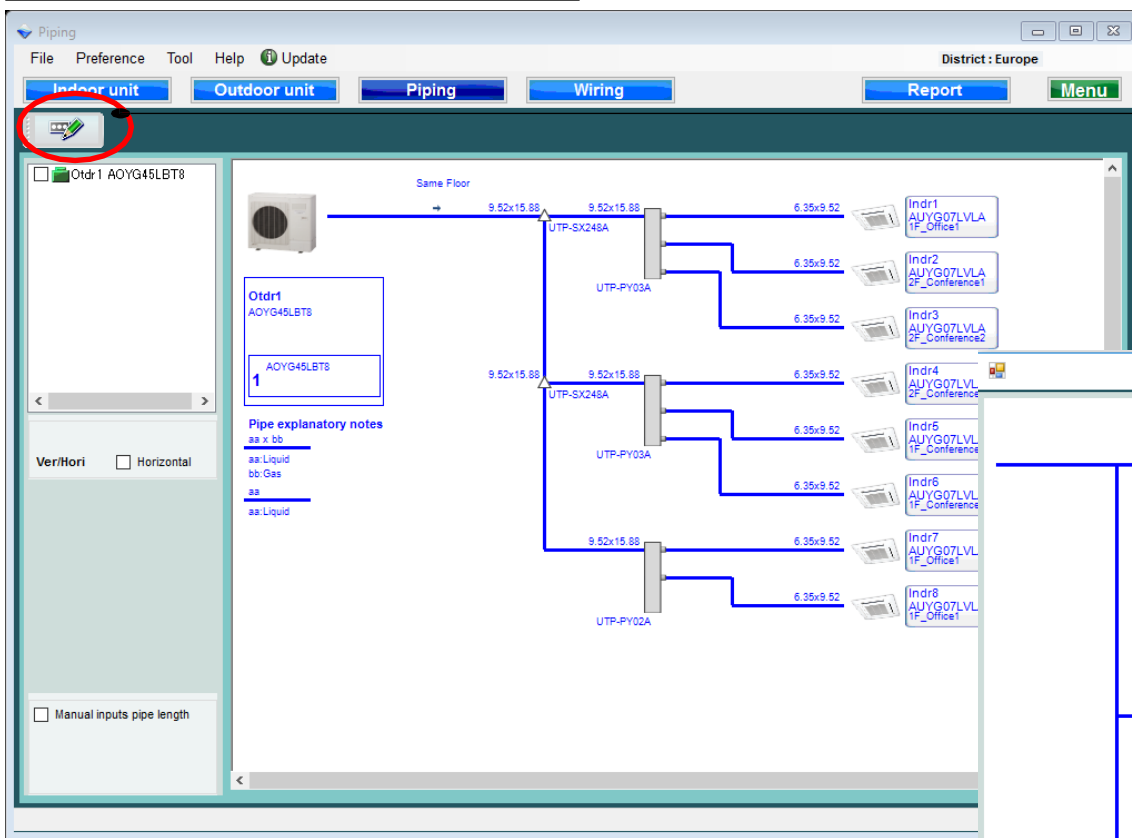
選擇“管線”

管線系統圖



顯示管道直徑，室外機，
室內機和連接單元的型號名稱。

修改室內機(1/3)

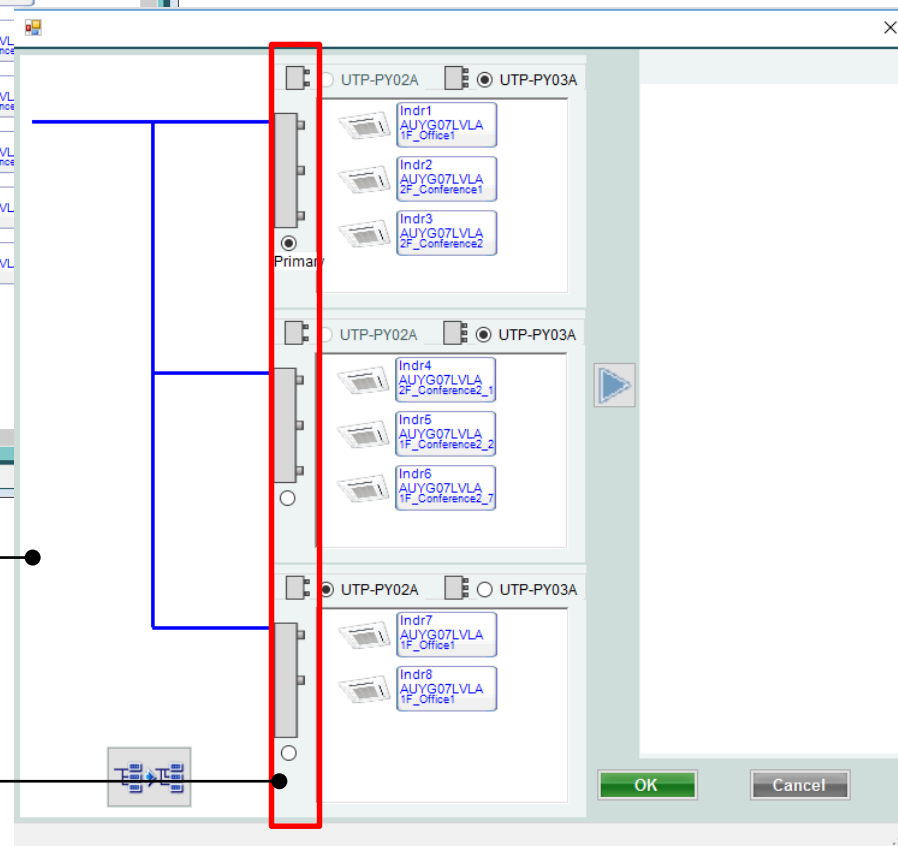


選擇修改室內機



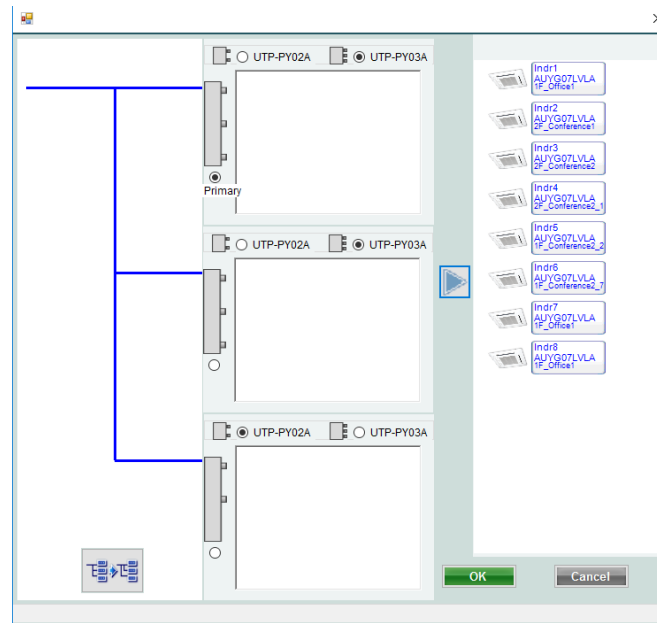
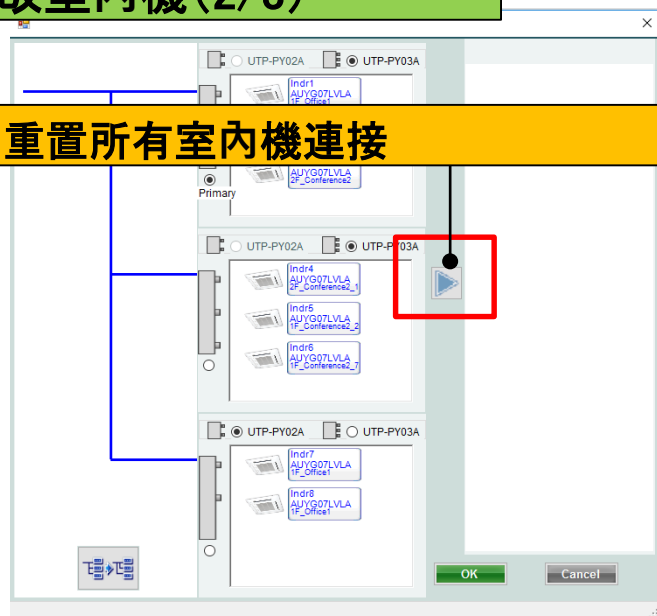
使用接線盒的室內機連接方法可以更改

選擇接線盒類型
選擇主接線盒

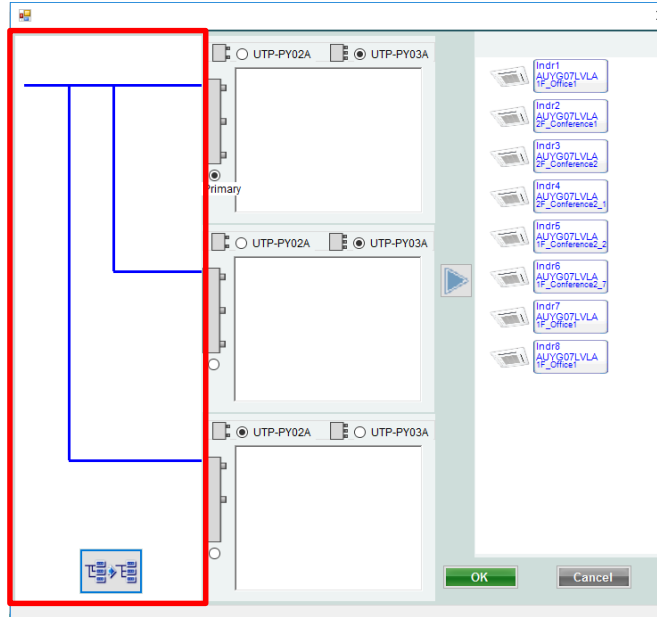
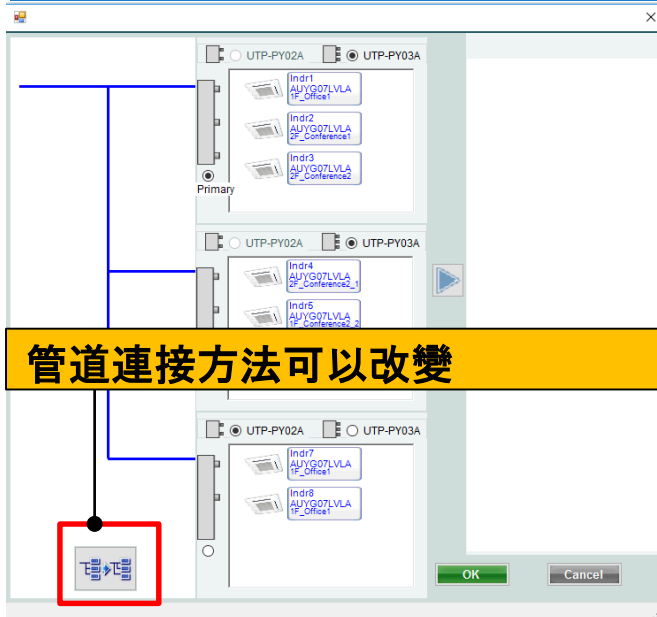


修改室內機(2/3)

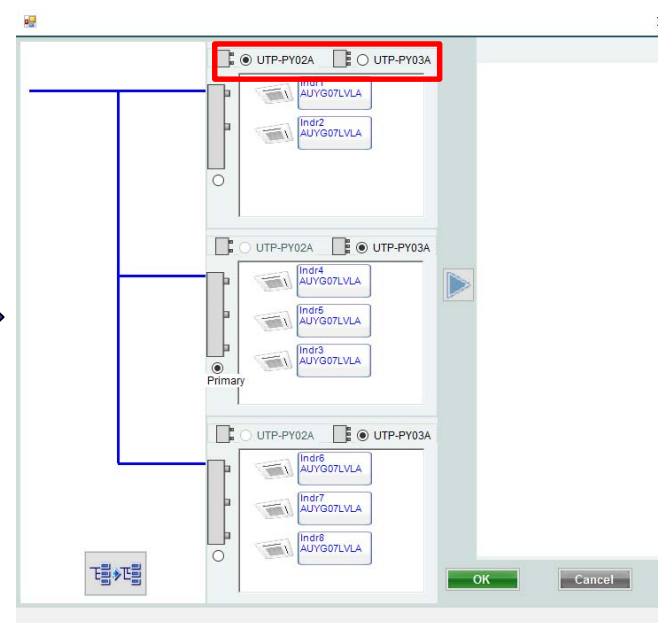
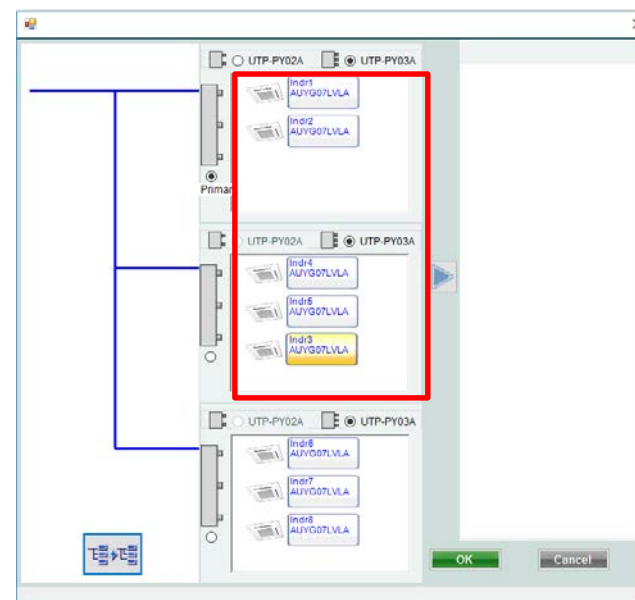
重置所有室內機連接



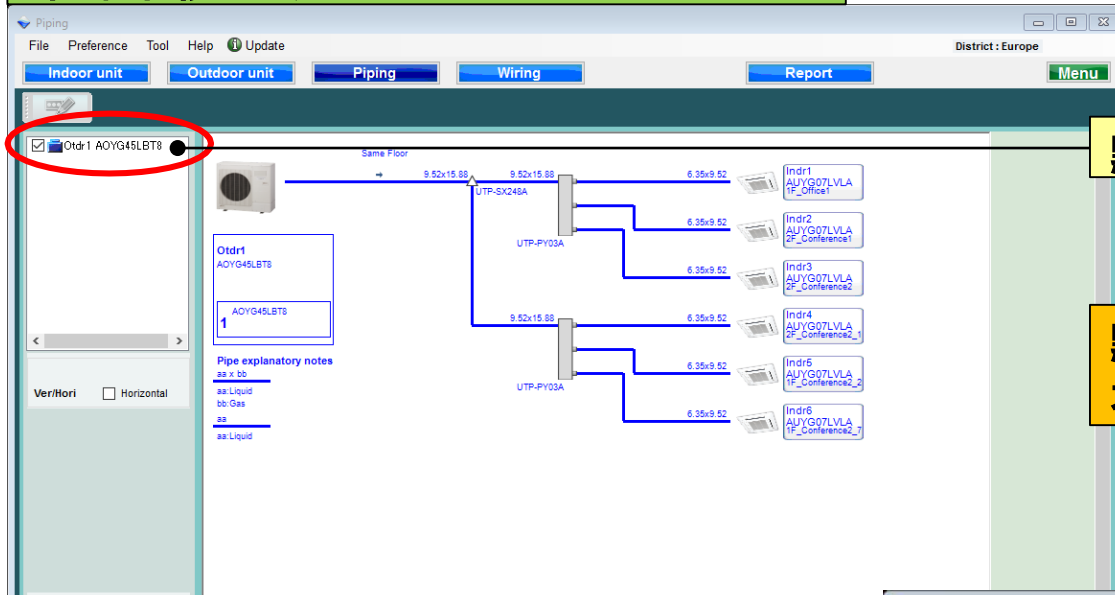
管道連接方法可以改變



修改室內機(3/3)

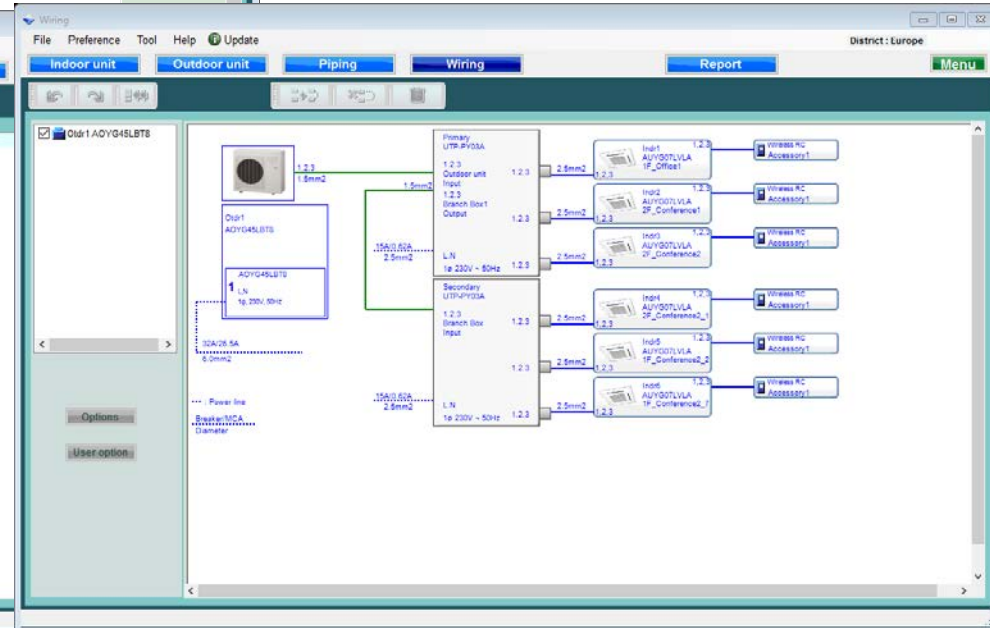
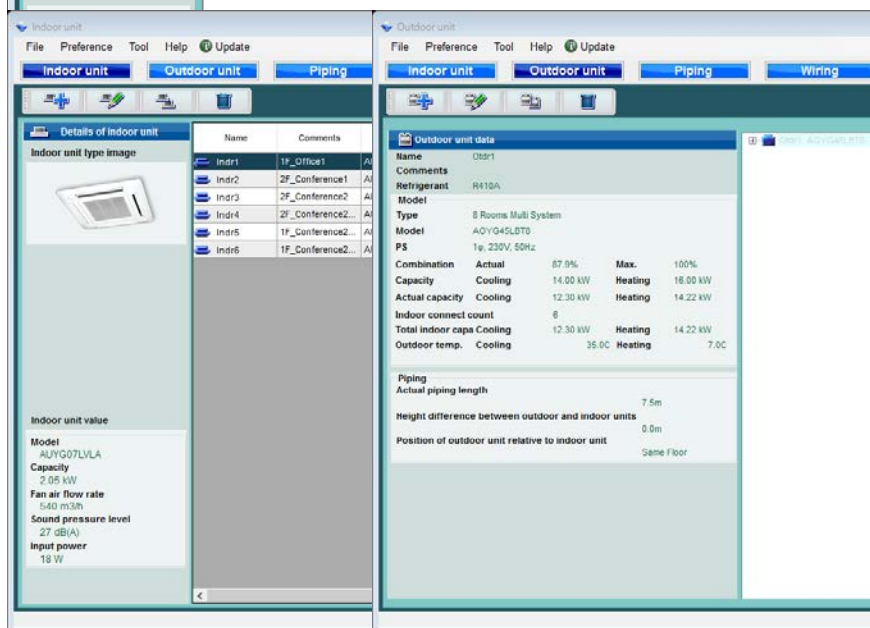


冷媒系統判斷

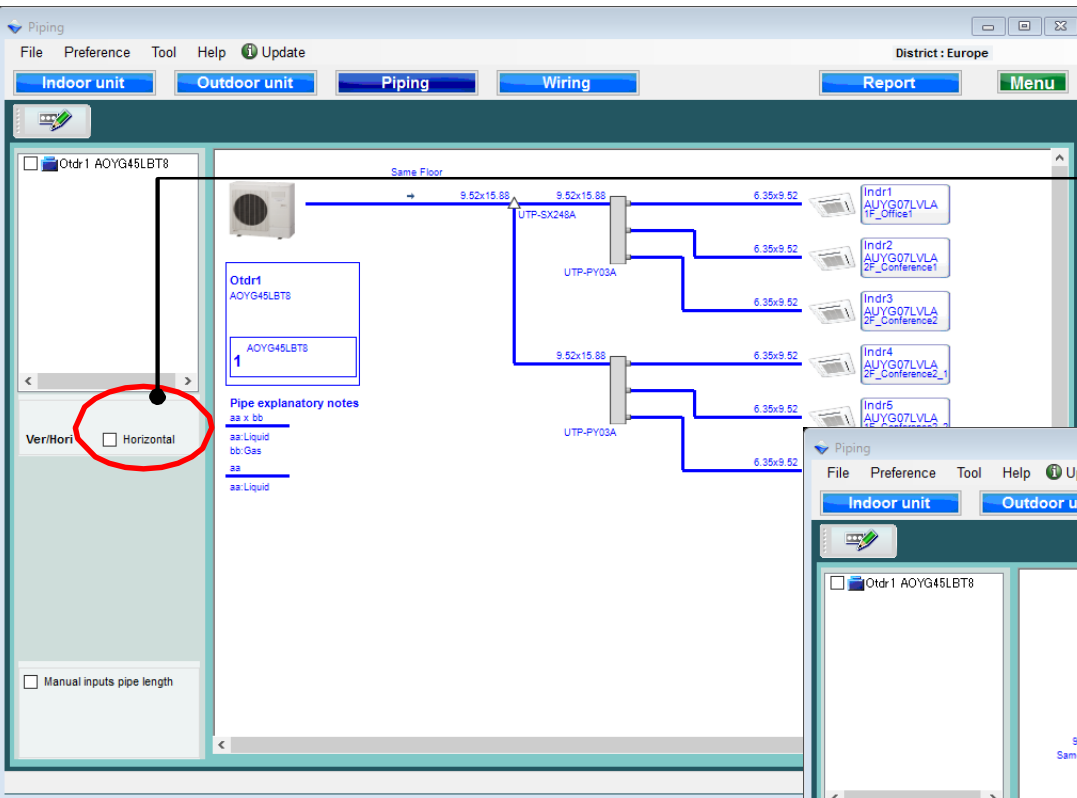


點選冷媒系統

點選冷媒系統
不能在每個螢幕上編輯

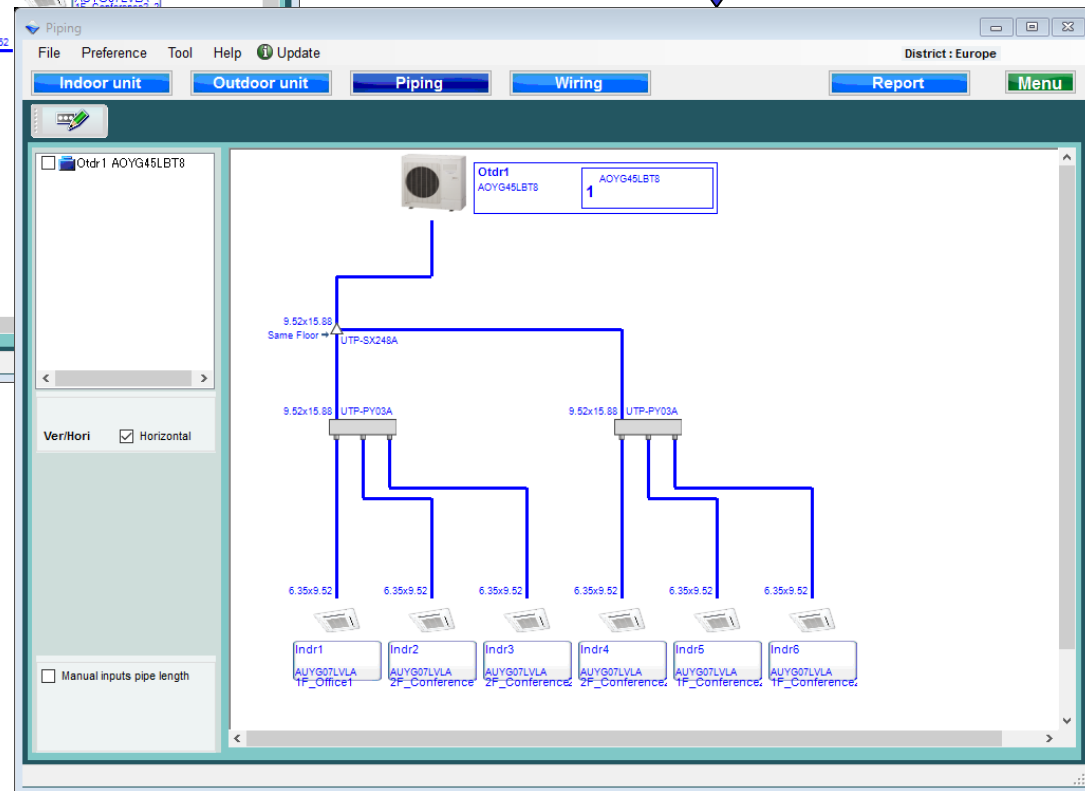


橫向圖



選擇“橫向”

它更改為水平視圖。



手動輸入管道長度 (1/5)

選擇“手動輸入管道長度”

打開管道長度設定視窗



Input pipe length

Pipe length m

Finish

District : Europe

Wiring

Report

Menu

Ver/Hori ☐ Horizontal

Height difference between outdoor and indoor unit. 0.0m

Actual piping length 0.0m

Total pipe length 0.0m

Additional refrigerant 0.0lbs

☒ Manual inputs pipe length

Pipe length

Reset length

Pipe explanatory notes

aa x bb

aa Liquid

bb Gas

aa

aa Liquid

Indr1 AUYG07LVLA 1F_Office1

Indr2 AUYG07LVLA 2F_Conference1

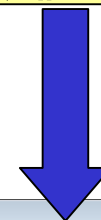
Indr3 AUYG07LVLA 2F_Conference2

Indr4 AUYG07LVLA 2F_Conference2_1

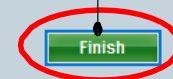
Indr5 AUYG07LVLA 1F_Conference2_2

Indr6 AUYG07LVLA 1F_Conference2_1

當信息未輸入或超出限制時，警告提供錯誤信息。



重複，然後選擇“完成”



It is different in the design pipe length and the actual pipe length.

The screenshot shows the Piping software interface. The main workspace displays a piping diagram for a refrigerant system. The outdoor unit (Otdr1 AOYG45LBT8) is connected to a manifold (UTP-PY03A), which then branches out to six indoor units (Indr1 to Indr6). The piping layout includes horizontal and vertical segments, with lengths and sizes (e.g., 5.0m, 9.52x15.88, 6.35x9.52) labeled along the lines. The left sidebar contains project settings, including a checkbox for 'Manual inputs pipe length' and buttons for 'Pipe length' and 'Reset length'. Two yellow callout boxes highlight specific data: 'Actual piping length 35.0m' and 'Additional refrigerant 5.9lbs'.

實際管道長度顯示：已標明和註冊的長度

額外的填充冷媒量自動計算並顯示。

實際管道長度顯示: 已標明和註冊的長度

額外的填充冷媒量自動計算並顯示。

手動輸入管道長度(5/5)

選擇重置長度

選擇是或否

重置長度

