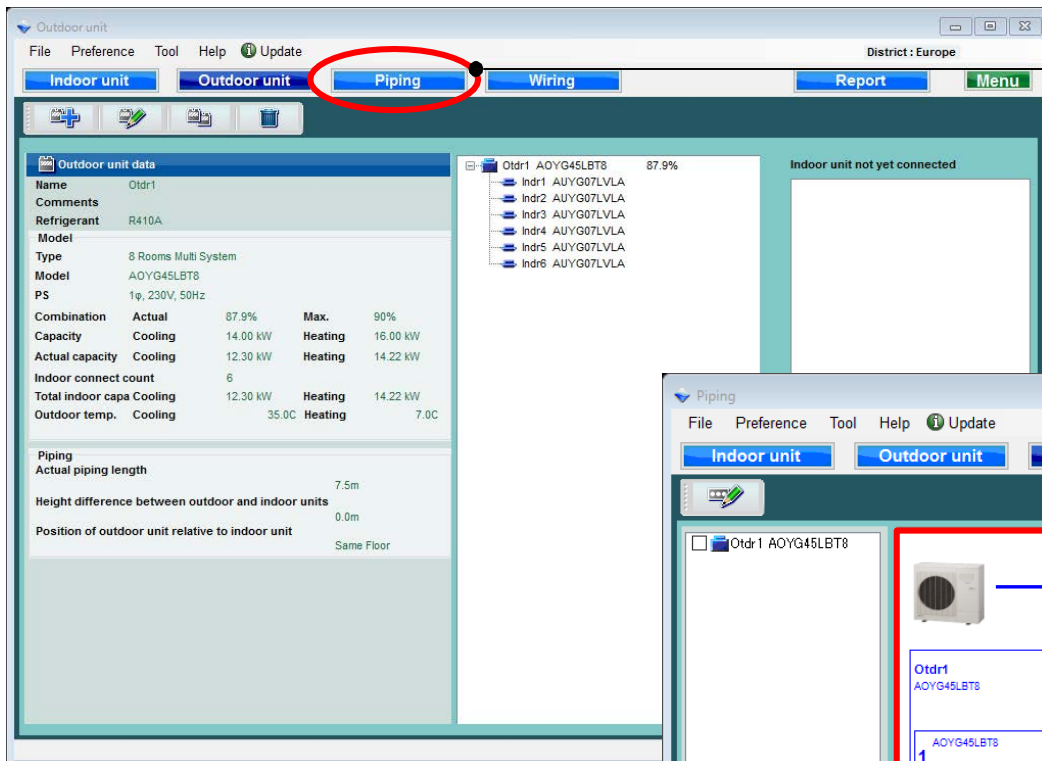


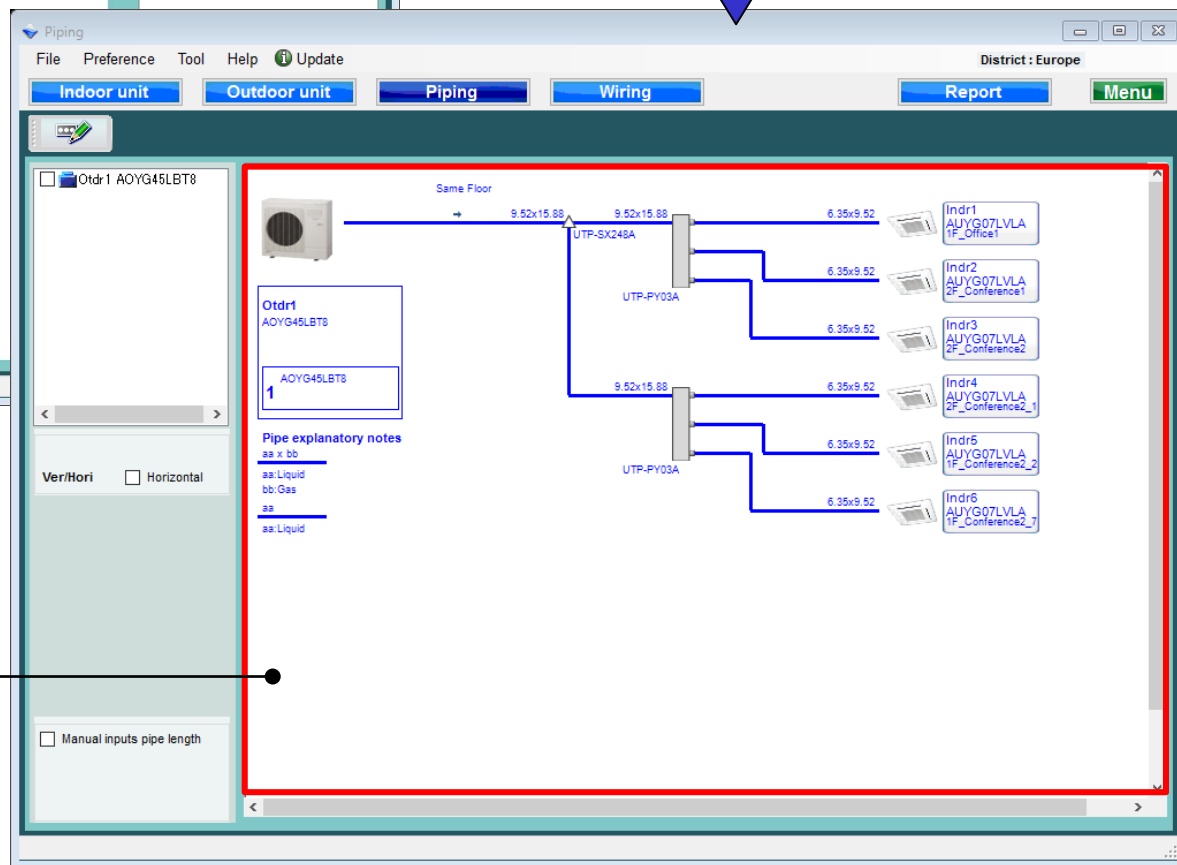
Podešavanje cevovoda

Design Simulator



Izaberite "Cevovod"

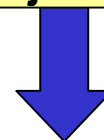
Kreiranje dijagrama sistema cevovoda



Prikazuje se prečnik cevi, nazivi vrste spoljne jedinice, unutrašnje jedinice i račvi

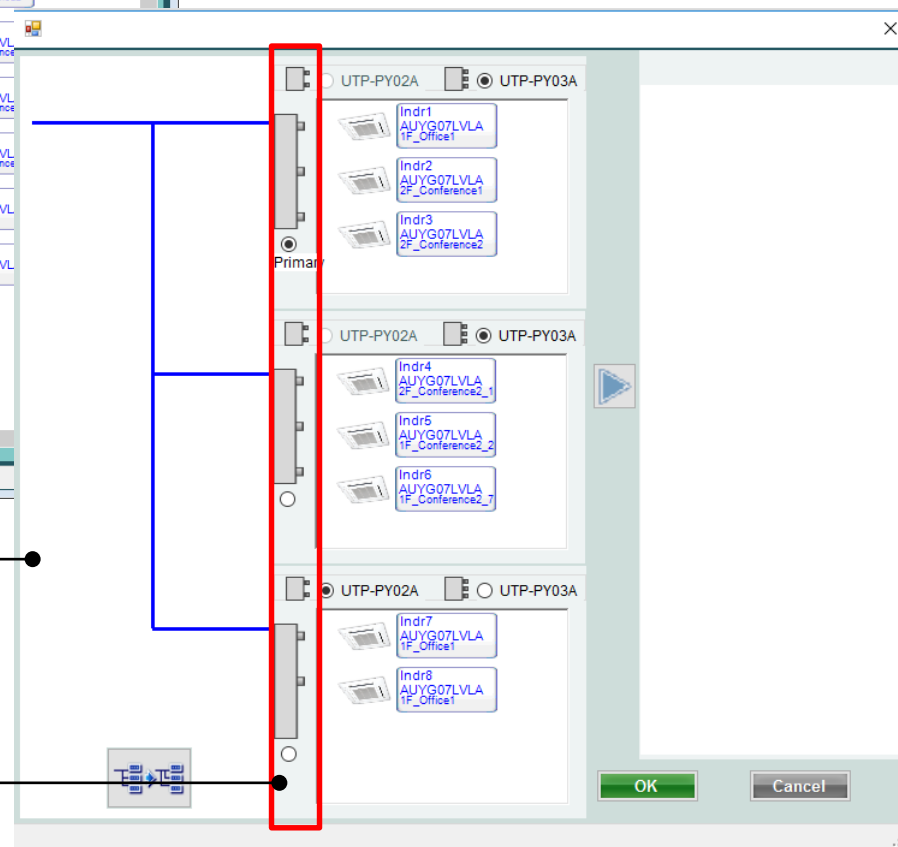
Modifikovanje unutrašnje jedinice (1/3)

Izaberite modifikovanje unutrašnje jedinice



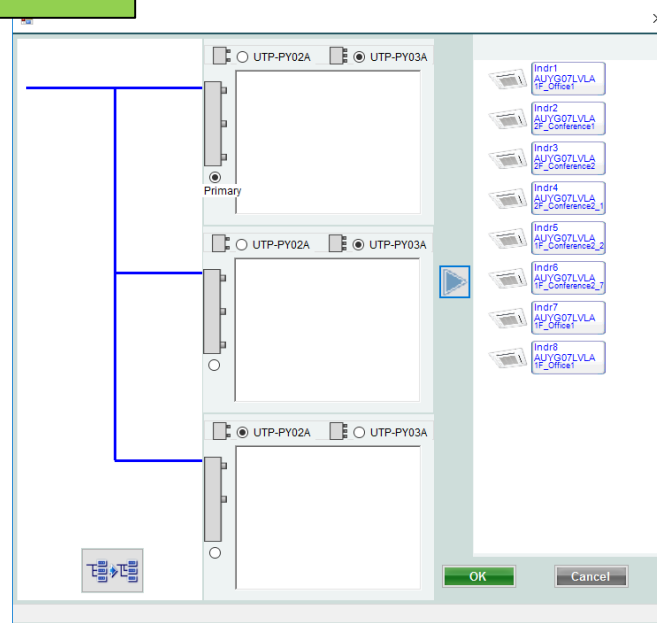
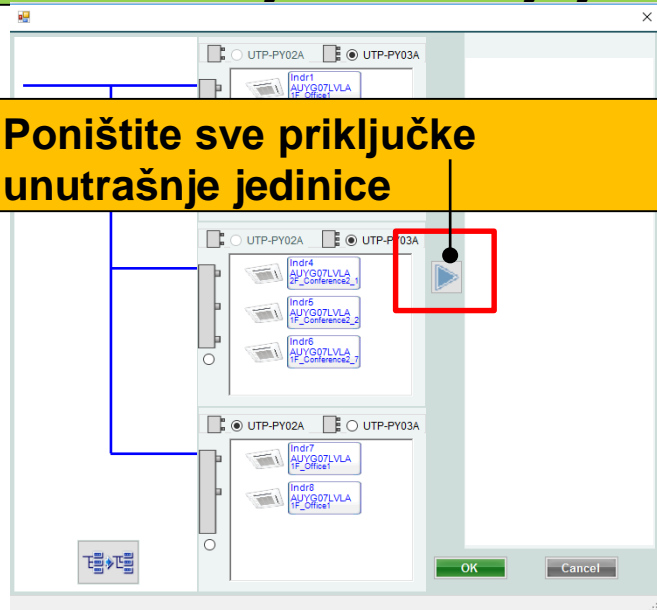
Metod spajanja unutrašnje jedinice može se promeniti pomoću priljučne kutije

Izaberite tip razvodne kutije
Izaberite primarnu razvodnu kutiju

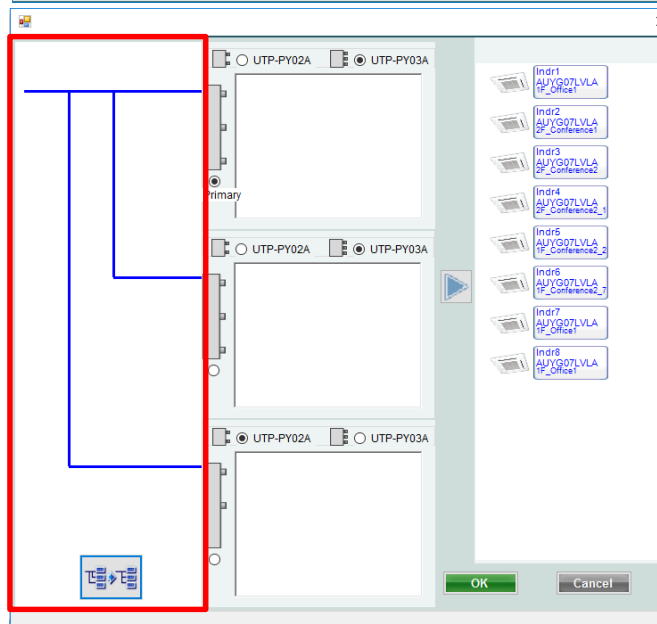
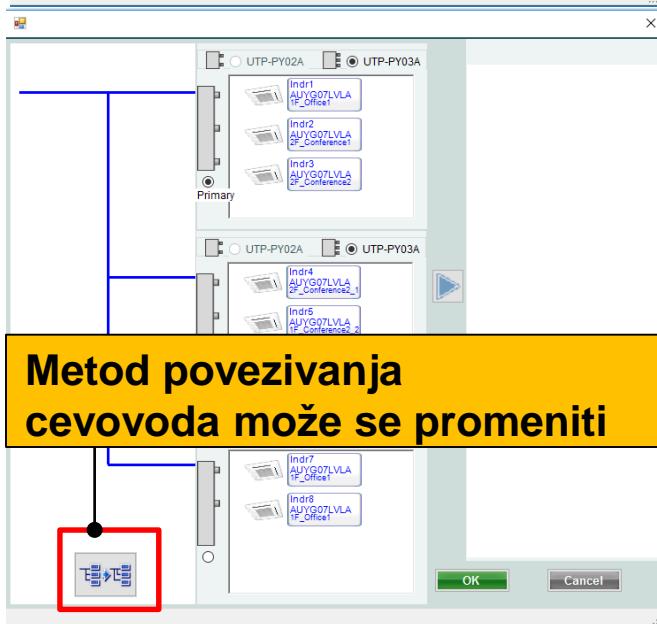


Modifikovanje unutrašnje jedinice (2/3)

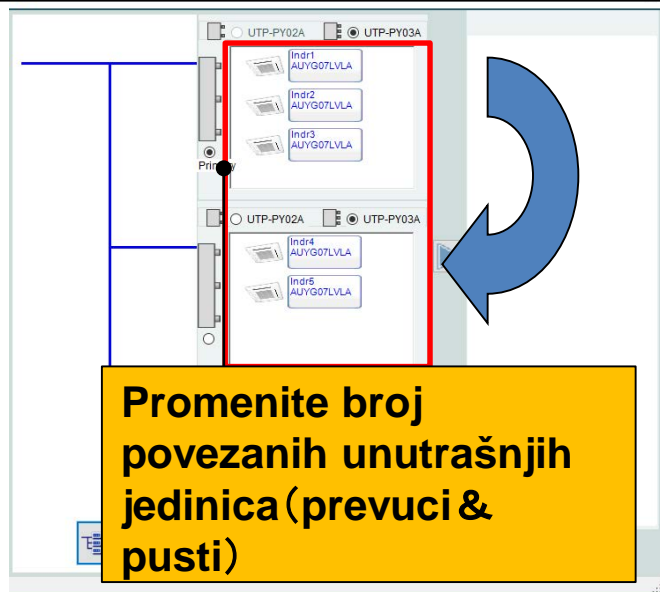
Poništite sve priključke unutrašnje jedinice



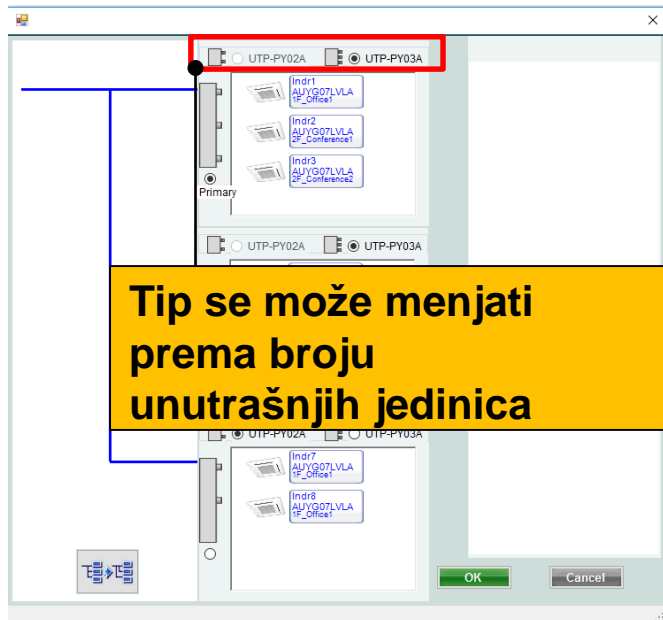
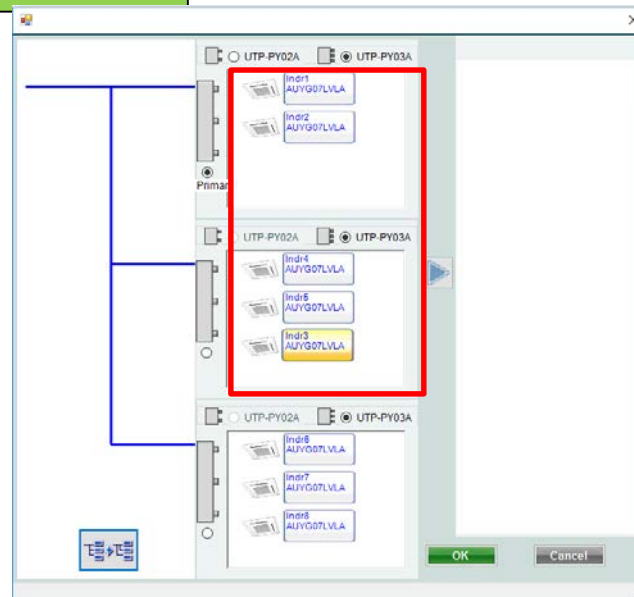
Metod povezivanja cevovoda može se promeniti



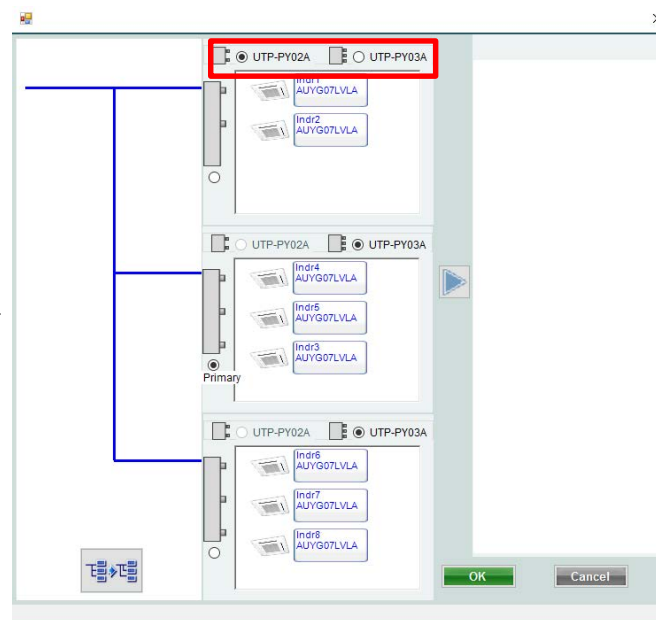
Modifikovanje unutrašnje jedinice (3/3)



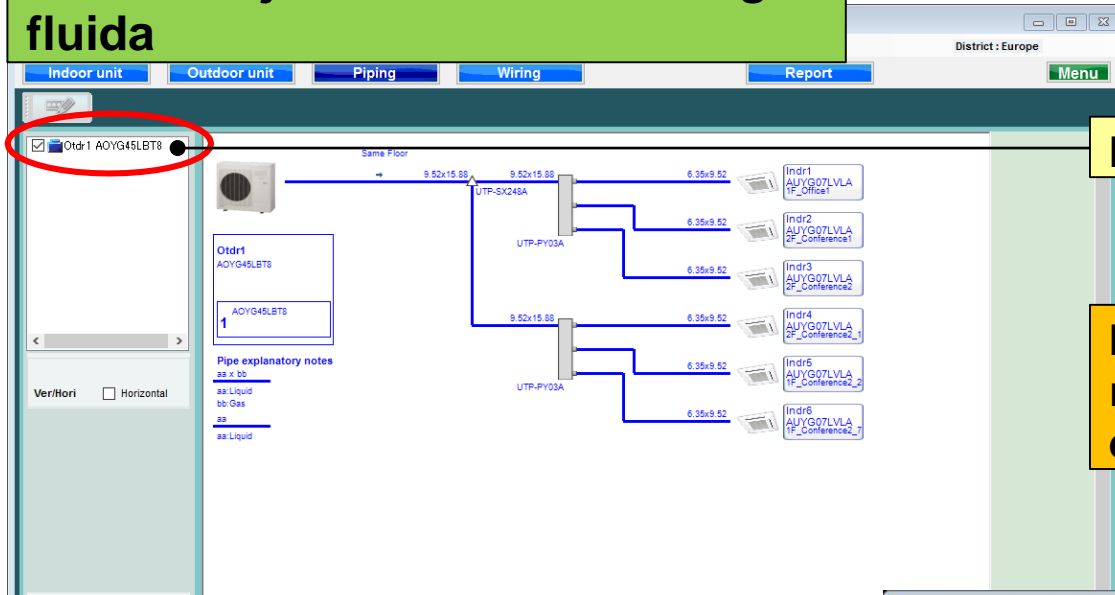
Promenite broj povezanih unutrašnjih jedinica (prevuci & pusti)



Tip se može menjati prema broju unutrašnjih jedinica

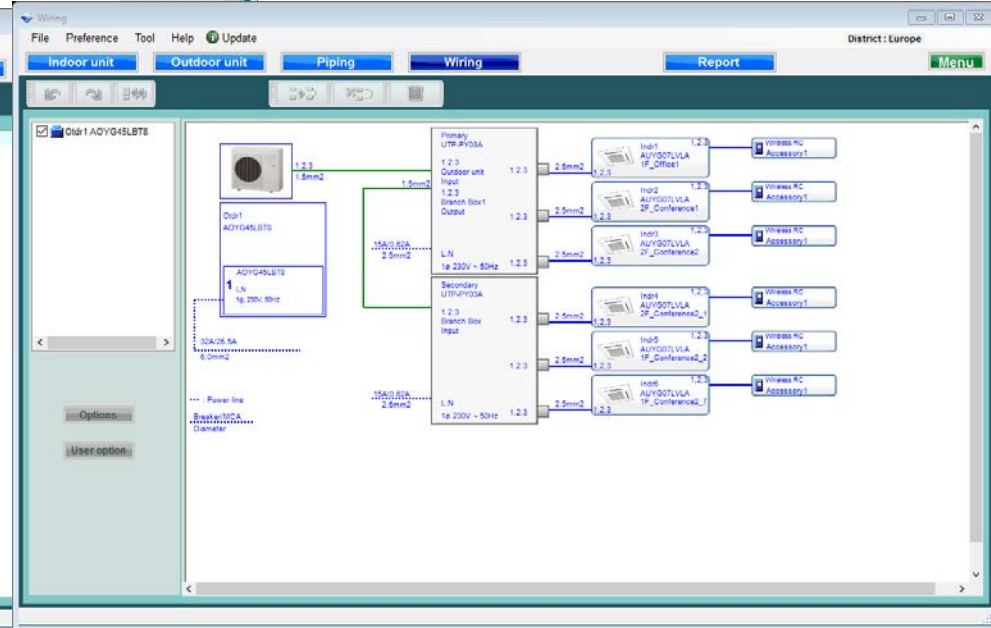
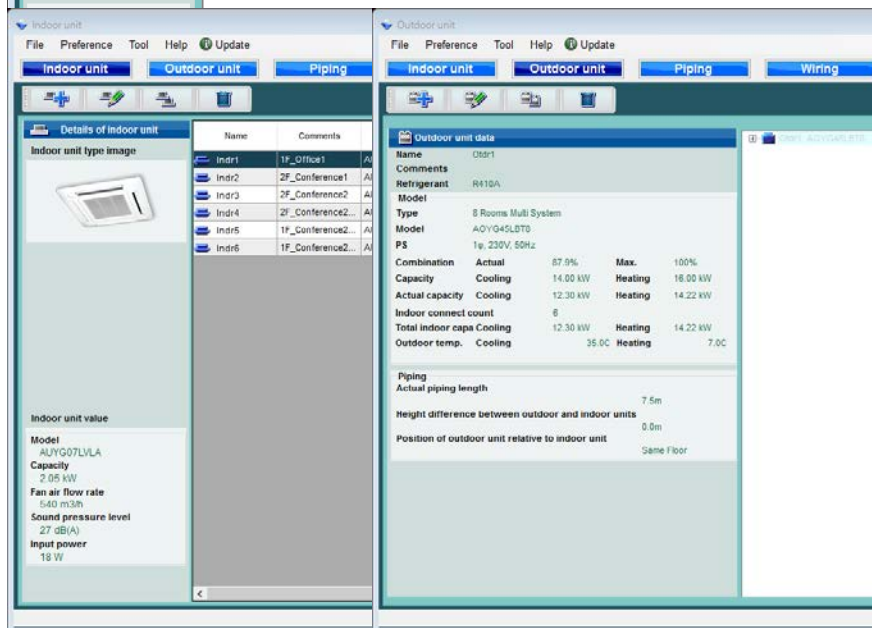


Određivanje sistema rashladnog fluida



Izaberite sistem rashladnog fluida

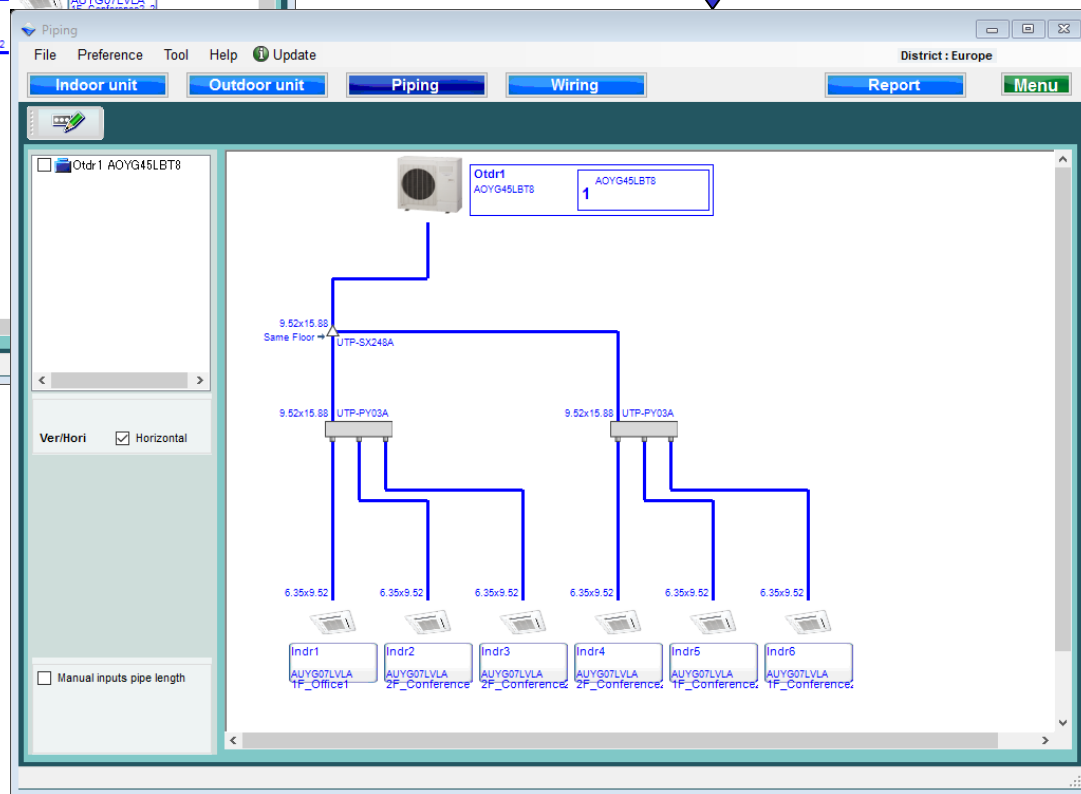
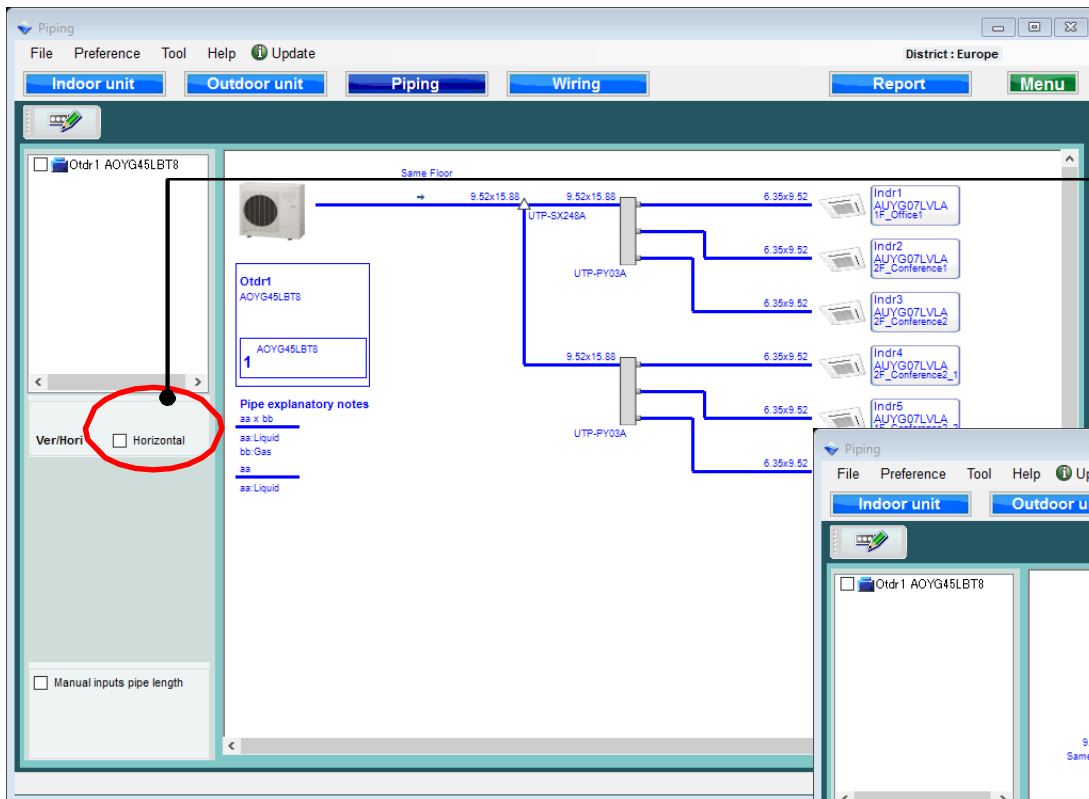
Izabrani sistem rashladnog fluida ne može se uređivati na svakom ekranu



Horizontalni prikaz

Izaberite "Horizontalno"

Promenjen je u horizontalni prikaz



Ručni unos dužine cevi (1/5)

Izaberite „Ručni unos dužine cevi”

Otvorite ekran za izbor dužine cevi



Input pipe length

Pipe length m

Finish

District : Europe

Wiring

Report

Menu

Ver/Hori ☐ Horizontal

Height difference between outdoor and indoor unit. 0.0m

Actual piping length 0.0m

Total pipe length 0.0m

Additional refrigerant 0.0lbs

☒ Manual inputs pipe length

Pipe length

Reset length

Pipe explanatory notes

aa x bb

aa Liquid

bb Gas

aa

aa Liquid

Indr1 AUYG07LVLA 1F_Office1

Indr2 AUYG07LVLA 2F_Conference1

Indr3 AUYG07LVLA 2F_Conference2

Indr4 AUYG07LVLA 2F_Conference2_1

Indr5 AUYG07LVLA 1F_Conference2_2

Indr6 AUYG07LVLA 1F_Conference2_1

Ručni unos dužine cevi (2/5)

Unesite dužinu cevi

Izaberite svaku cev

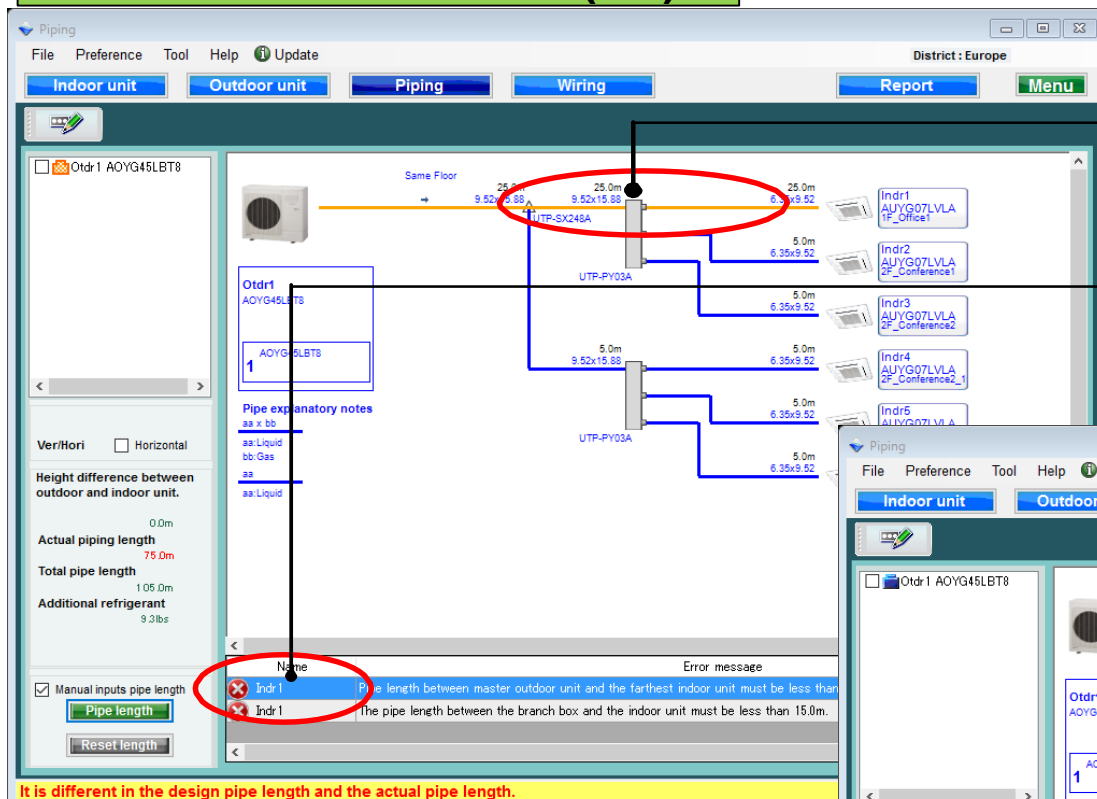
Kada se sve dužine registruju
izaberite “Završi”

The screenshot displays the 'Design Simulator' software interface. The 'Input pipe length' dialog box is open, showing a 'Pipe length' field with the value '25' and a 'Finish' button. The background shows a piping diagram with various indoor units (Indr1 to Indr6) and outdoor units (Otdr1) connected by pipes. The 'Piping' window is also visible, showing the 'Indoor unit' and 'Outdoor unit' tabs. The 'Pipe length' field in the 'Input pipe length' dialog is circled in red, and the 'Finish' button is also circled in red.

Podešavanje cevovoda

Design Simulator

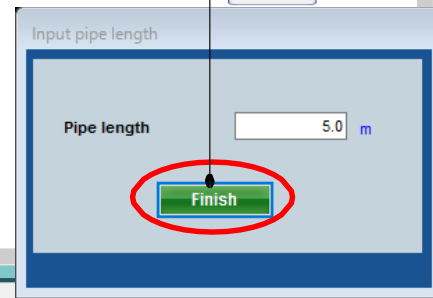
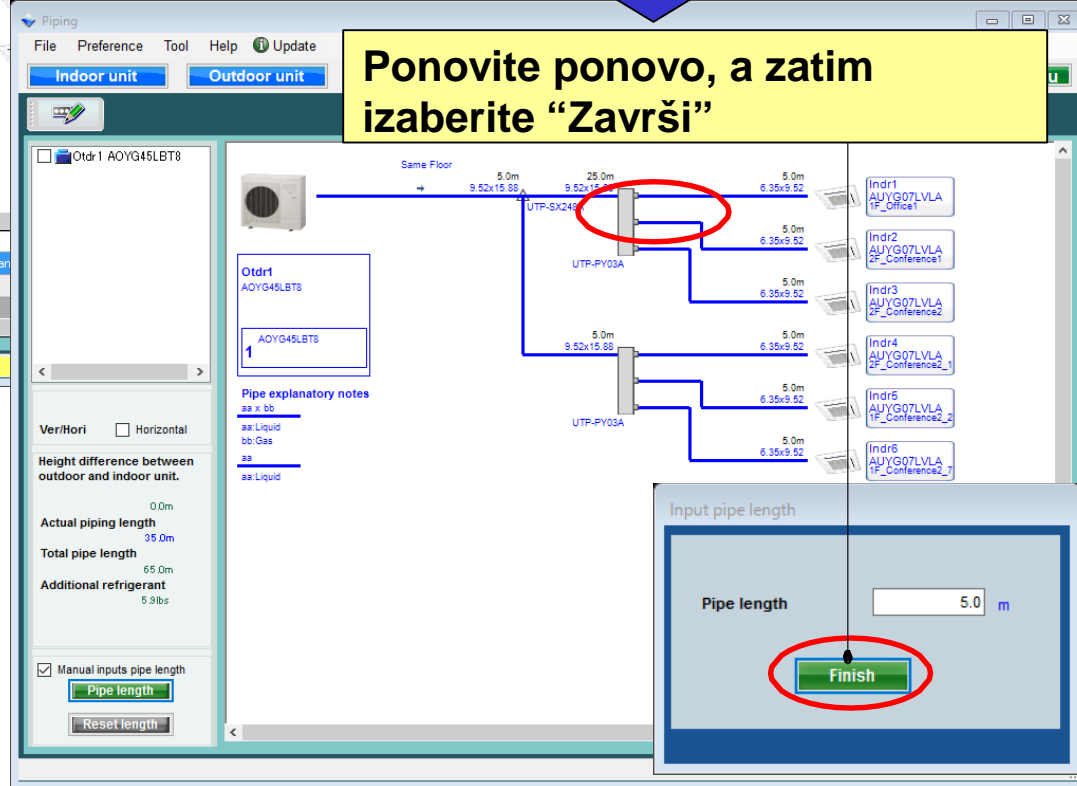
Ručni unos dužine cevi (3/5)



Upozorenje daje informacije o greškama kada informacija nije uneta ili prelazi ograničenja



Ponovite ponovo, a zatim izaberite "Završi"



Ručni unos dužine cevi (4/5)

The screenshot displays the 'Piping' window of the 'Design Simulator' software. The interface includes a menu bar (File, Preference, Tool, Help, Update), a toolbar, and a main workspace showing a piping layout. The layout includes an outdoor unit 'Otdr1 AOYG45LBT8', a horizontal pipe section labeled 'Same Floor', and several indoor units (Indr1 to Indr6) connected by vertical and horizontal pipes. Pipe specifications like '9.52x15.88' and '6.35x9.52' are shown along with lengths like '5.0m' and '25.0m'. On the left, a panel shows the 'Otdr1 AOYG45LBT8' unit and a list of pipes. Below this, a section titled 'Pipe explanatory notes' shows 'aa x bb' with 'aa: Liquid' and 'bb: Gas'. At the bottom left, a section titled 'Manual inputs pipe length' has a checked checkbox and buttons for 'Pipe length' and 'Reset length'. Two red circles highlight the 'Actual piping length' (35.0m) and 'Additional refrigerant' (5.8lbs) fields. Two yellow text boxes with black text are overlaid on the right side of the interface.

Prikaz trenutne dužine cevovoda: deklarirana i registrovana dužina

Dodatna količina rashladnog fluida se automatski izračunava i prikazuje

Ručni unos dužine cevi (5/5)

Izaberite resetuj dužinu

Izaberite Y ili N

Resetujte dužinu

