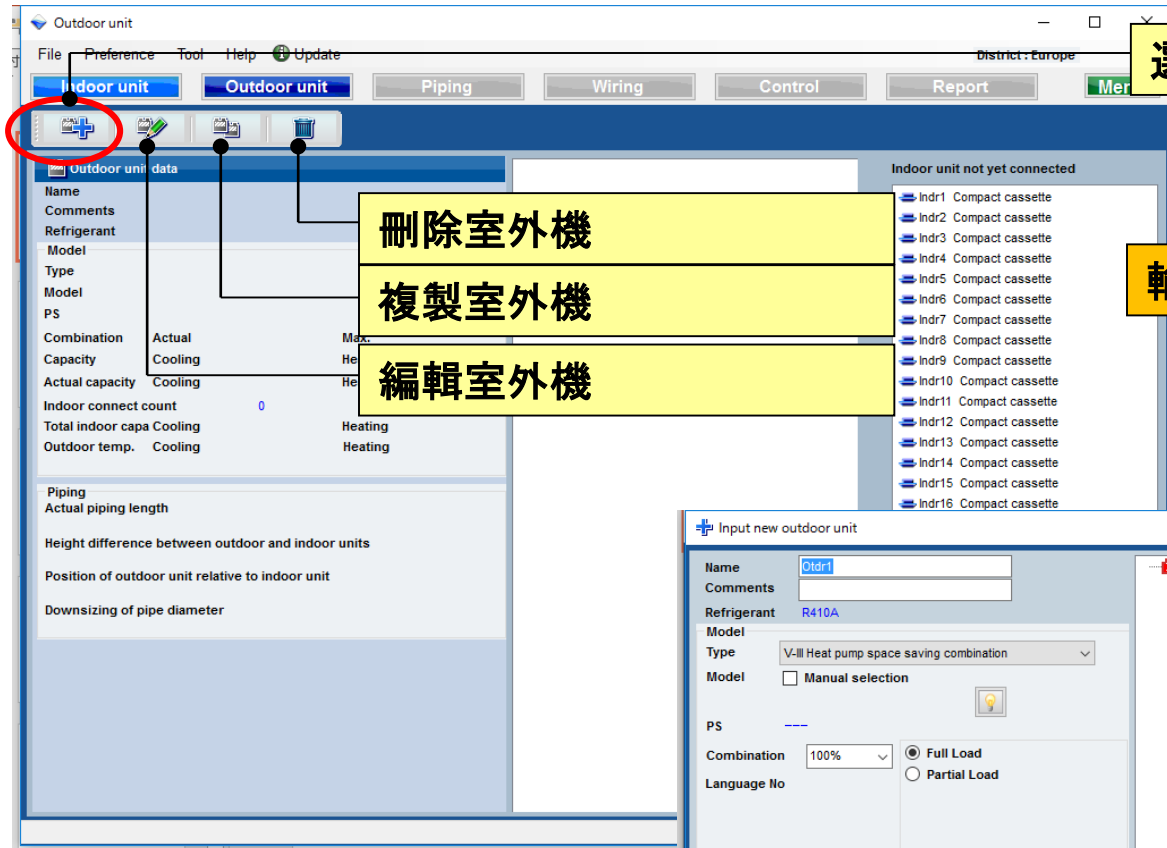


## 室外機(1/4)



選擇“新增室外機”



輸入新的室外機

刪除室外機

複製室外機

編輯室外機

The 'Input new outdoor unit' dialog box is shown. It contains the following fields and options:

- Name: Oldr1
- Comments: (empty)
- Refrigerant: R410A
- Model: (empty)
- Type: V-III Heat pump space saving combination
- Model: ☐ Manual selection
- PS: ---
- Combination: 100%
- Language No: (empty)
- Outdoor dry bulb temperature: Cooling C 35 Heating C 7
- Actual capacity: Cooling 84.0 kW Heating 94.5 kW
- Piping: Actual piping length m 7.5
- Position of outdoor unit relative to indoor unit: ☐ Higher ☒ Same Floor ☐ Lower
- Height difference between outdoor and indoor units m 0.0
- Downsizing of pipe diameter: ☐ Apply
- Buttons: Preview, Partial Load operation, Cancel, OK

## 室外機(2/4)

Input new outdoor unit

Name

Comments

Refrigerant

Model

Type

Model ☐ Manual selection

PS

Language No

Full Load ☒

Partial Load ☐

Outdoor dry bulb temperature

Cooling

Heating

Actual capacity

Cooling  kW

Heating  kW

Piping

Actual piping length

Position of outdoor unit relative to indoor unit

☐ Higher ☒ Same Floor ☐ Lower

Height difference between outdoor and indoor units

Downsizing of pipe diameter

☐ Apply

Partial Load operation

Cancel

部分加載操作

優先輸入名稱顯示

輸入註釋. (只能輸入十個字)  
可以自由寫入. ( Ex. : Roof top, 1F)

選擇室外機的類型

選擇室外機型號

戶外容量清單

選擇連接的限制。如果超過連接限制, 室外機將自動轉換為上述型號。

選擇負載類型

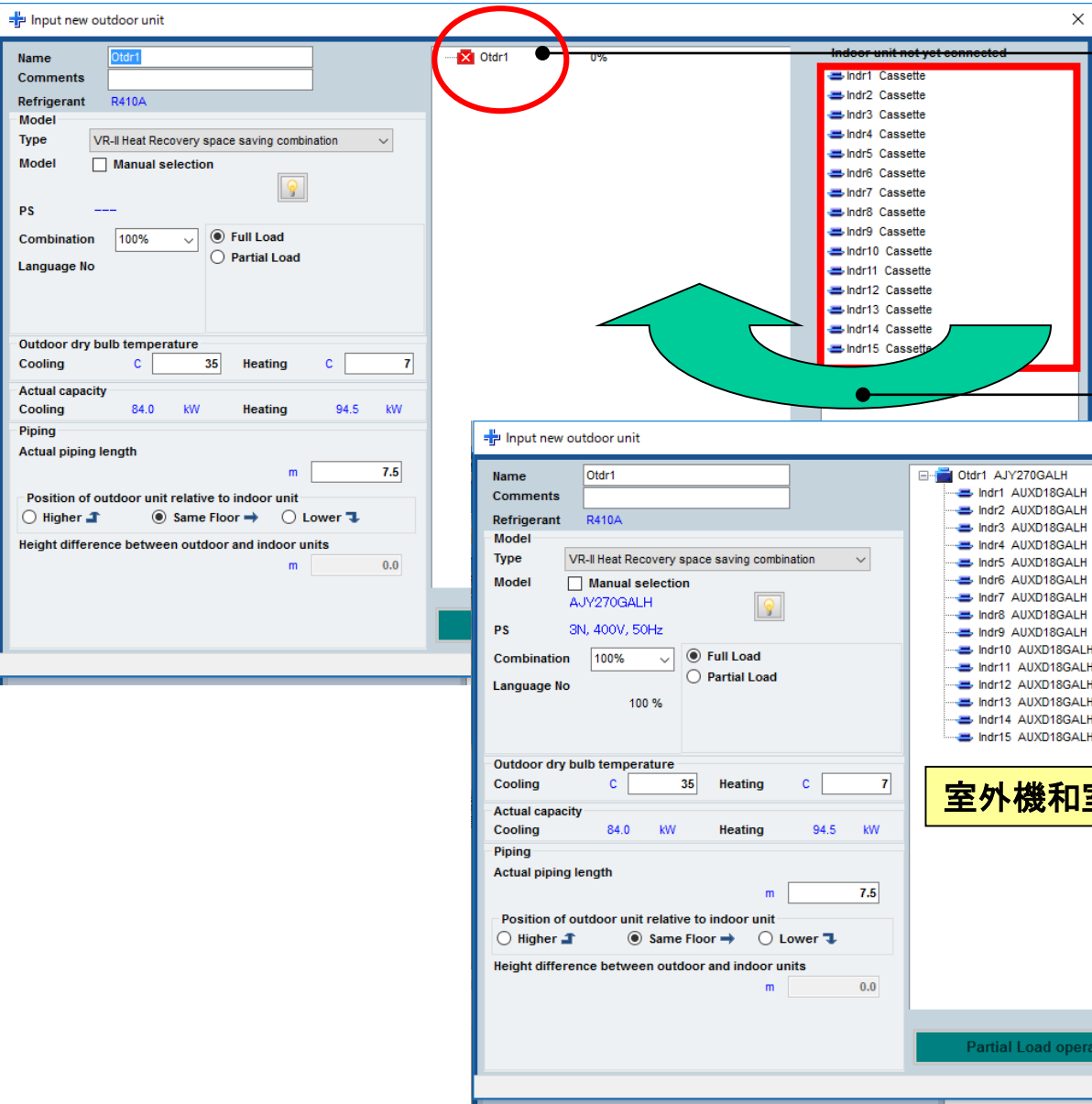
輸入室外機的設計條件。  
如果不決定設計條件, 則在冷卻“35C”和加熱“7C”的額定條件下輸入。

輸入“實際管道長度”和“高差”的值。  
選擇室外機相對於室內機的位置。(\* 1)

管徑縮小(\* 1)

(\*1)損失係數是自動計算的。

## 室外機(3/4)



紅色標記表示外部設計條件。

使用室內機註冊畫面設置室內機組。(拖放)

室外機和室內機的型號是自動選擇的。

## 室外機(4/4)

Input new outdoor unit

Name: Oldr1

Comments:

Refrigerant: R410A

Model: VR-II Heat Recovery space saving combination

Type: ☐ Manual selection

Model: AJY270GALH

PS: 3N, 400V, 50Hz

Combination: 100%

Language No: 100 %

Outdoor dry bulb temperature

Cooling: C 35 Heating: C 7

Actual capacity

Cooling: 84.0 kW Heating: 94.5 kW

Piping

Actual piping length: m 7.5

Position of outdoor unit relative to indoor unit

☐ Higher ☒ Same Floor ☐ Lower

Height difference between outdoor and indoor units

m 0.0

Partial Load operation

Cancel OK

選擇“OK”

室外機和室內機產品資訊和圖像顯示。

Model

Type: VR-II Heat Recovery space saving combination

Model: AJY270GALH

PS: 3N, 400V, 50Hz

Combination	Actual	Max.
Capacity	98.8%	100%
Cooling	85.0 kW	95.0 kW
Actual capacity	84.0 kW	94.5 kW
Indoor connect count	15	
Total indoor capa	84.0 kW	94.5 kW
Outdoor temp.	35C	7C

Piping

Actual piping length: 7.5m

Height difference between outdoor and indoor units: 0.0m

Position of outdoor unit relative to indoor unit: Same Floor



## 室內機

選擇“室內機”

確認室內機視窗上的詳細規格。

Indoor unit

File Preference Tool Help Update

Indoor unit Outdoor unit Piping Wiring

Details of indoor unit

Indoor unit type image

Name	Comments	Model	Tmp C (C/°)	Tmp H (C)	Rq TC (kW)	TC (kW)	Rq SC (kW)	SC (kW)	Rq HC (kW)	HC (kW)
Indr1		AUXD18GALH	27.0/ 43.4	20	0.5	5.0	0.5	4.1	0.5	6.0
Indr2		AUXD18GALH	27.0/ 43.4	20	0.5	5.0	0.5	4.1	0.5	6.0
Indr3		AUXD18GALH	27.0/ 43.4	20	0.5	5.0	0.5	4.1	0.5	6.0
Indr4		AUXD18GALH	27.0/ 43.4	20	0.5	5.0	0.5	4.1	0.5	6.0
Indr5		AUXD18GALH	27.0/ 43.4	20	0.5	5.0	0.5	4.1	0.5	6.0
Indr6		AUXD18GALH	27.0/ 43.4	20	0.5	5.0	0.5	4.1	0.5	6.0
Indr7		AUXD18GALH	27.0/ 43.4	20	0.5	5.0	0.5	4.1	0.5	6.0
Indr8		AUXD18GALH	27.0/ 43.4	20	0.5	5.0	0.5	4.1	0.5	6.0
Indr9		AUXD18GALH	27.0/ 43.4	20	0.5	5.0	0.5	4.1	0.5	6.0
Indr10		AUXD18GALH	27.0/ 43.4	20	0.5	5.0	0.5	4.1	0.5	6.0
Indr11		AUXD18GALH	27.0/ 43.4	20	0.5	5.0	0.5	4.1	0.5	6.0
Indr12		AUXD18GALH	27.0/ 43.4	20	0.5	5.0	0.5	4.1	0.5	6.0
Indr13		AUXD18GALH	27.0/ 43.4	20	0.5	5.0	0.5	4.1	0.5	6.0
Indr14		AUXD18GALH	27.0/ 43.4	20	0.5	5.0	0.5	4.1	0.5	6.0
Indr15		AUXD18GALH	27.0/ 43.4	20	0.5	5.0	0.5	4.1	0.5	6.0

Indoor unit value

Model  
AUXD18GALH  
Capacity  
5.6 kW  
Fan air flow rate  
High / 319.4 l/s  
Sound pressure level  
36 dB(A)  
Input power  
39 W

Indoor unit

Details of indoor unit

Indoor unit type image

Name	Comments	Model	Tmp C (C/°)	Tmp H (C)	Rq TC (kW)	TC (kW)	Rq SC (kW)	SC (kW)	Rq HC (kW)	HC (kW)
Indr1		AUXD18GALH	27.0/ 43.4	20	0.5	5.0	0.5	4.1	0.5	6.0
Indr2		AUXD18GALH	27.0/ 43.4	20	0.5	5.0	0.5	4.1	0.5	6.0
Indr3		AUXD18GALH	27.0/ 43.4	20	0.5	5.0	0.5	4.1	0.5	6.0
Indr4		AUXD18GALH	27.0/ 43.4	20	0.5	5.0	0.5	4.1	0.5	6.0
Indr5		AUXD18GALH	27.0/ 43.4	20	0.5	5.0	0.5	4.1	0.5	6.0
Indr6		AUXD18GALH	27.0/ 43.4	20	0.5	5.0	0.5	4.1	0.5	6.0
Indr7		AUXD18GALH	27.0/ 43.4	20	0.5	5.0	0.5	4.1	0.5	6.0
Indr8		AUXD18GALH	27.0/ 43.4	20	0.5	5.0	0.5	4.1	0.5	6.0
Indr9		AUXD18GALH	27.0/ 43.4	20	0.5	5.0	0.5	4.1	0.5	6.0
Indr10		AUXD18GALH	27.0/ 43.4	20	0.5	5.0	0.5	4.1	0.5	6.0
Indr11		AUXD18GALH	27.0/ 43.4	20	0.5	5.0	0.5	4.1	0.5	6.0
Indr12		AUXD18GALH	27.0/ 43.4	20	0.5	5.0	0.5	4.1	0.5	6.0
Indr13		AUXD18GALH	27.0/ 43.4	20	0.5	5.0	0.5	4.1	0.5	6.0
Indr14		AUXD18GALH	27.0/ 43.4	20	0.5	5.0	0.5	4.1	0.5	6.0
Indr15		AUXD18GALH	27.0/ 43.4	20	0.5	5.0	0.5	4.1	0.5	6.0

Indoor unit value

Model  
AUXD18GALH  
Capacity  
5.6 kW  
Fan air flow rate  
High / 319.4 l/s  
Sound pressure level  
36 dB(A)  
Input power  
39 W

## 室外機容量清單(1/3)

Input new outdoor unit

Name: Otdr1  
Comments:   
Refrigerant: R410A  
Model: VR-II Heat Recovery space saving combination  
Type:   
Model: ☐ Manual selection  
AJYA90GALH  
PS: 3N, 400V, 50Hz  
Combination: 100% ☒ Full Load ☐ Partial Load  
Language No: 100 %

Outdoor dry bulb temperature  
Cooling: C 35 Heating: C 7  
Actual capacity  
Cooling: 28.0 kW Heating: 31.5 kW  
Piping  
Actual piping length: m 7.5  
Position of outdoor unit relative to indoor unit  
☐ Higher ☒ Same Floor ☐ Lower  
Height difference between outdoor and indoor units: m 0.0

Partial Load

Indoor unit not yet connected

Otdr1 AJYA90GALH 100%  
Indr1 AUXD18GALH  
Indr2 AUXD18GALH  
Indr3 AUXD18GALH  
Indr4 AUXD18GALH  
Indr5 AUXD18GALH

計算連接的百分比和容量，連接時從組合值中選擇最大的室外機。

Input new outdoor unit

Name: Otdr1  
Comments:   
Refrigerant: R410A  
Model: VR-II Heat Recovery space saving combination  
Type:   
Model: ☒ Manual selection  
AJYA90GALH  
PS: 3N, 400V, 50Hz  
Combination: 100% ☒ Full Load ☐ Partial Load  
Language No: 100 %

Outdoor dry bulb temperature  
Cooling: C 35 Heating: C 7  
Actual capacity  
Cooling: 28.0 kW Heating: 31.5 kW  
Piping  
Actual piping length: m 7.5  
Position of outdoor unit relative to indoor unit  
☐ Higher ☒ Same Floor ☐ Lower  
Height difference between outdoor and indoor units: m 0.0

Partial Load

Indoor unit not yet connected

Otdr1 AJYA90GALH 100%  
Indr1 AUXD18GALH  
Indr2 AUXD18GALH  
Indr3 AUXD18GALH  
Indr4 AUXD18GALH  
Indr5 AUXD18GALH

Outdoor capacity list

Combination (%)	HP	Capacity (kW)	Model name	Outdoor unit	Outdoor unit	Outdoor unit
100.0	10	28.0	AJYA90GALH	AJYA90GALH		
83.6	12	33.5	AJY108GALH	AJY108GALH		
70.0	14	40.0	AJY126GALH	AJY126GALH		

Upper bound: 100%  
Lower bound: 70%  
Calculate  
Cancel OK

使用“戶外容量列表”可以指定連接百分比和容量計算比率的範圍，並且能夠從多個候選中選擇室外機

## 室外機容量清單(2/3)

Modify outdoor unit

Nar Input new outdoor unit

Comments

Refrigerant R410A

Model

Type VR-II Heat Recovery space saving combination

Model ☒ Manual selection

AJHA72GALH

PS 3N, 400V, 50Hz

選擇“室外機容量清單”

打開“室外機容量清單”

Outdoor capacity list

Combination (%)	HP	Capacity (kW)	Model name	Outdoor unit	Outdoor unit	Outdoor unit
62.9	10	28.0	AJHA90GALH	AJHA90GALH		
52.5	12	33.5	AJH108GALH	AJH108GALH		

Upper bound 70%

Lower bound 50%

Calculate

Cancel OK

選擇“上限”

選擇“計算”

範圍內的室外機顯示在列表中。

## 室外機容量清單 (3/3)

Outdoor capacity list

Combination (%)	HP	Capacity (kW)	Model name	Outdoor unit	Outdoor unit	Outdoor unit
62.9	10	28.0	AJHA90GALH	AJHA90GALH		
52.5	12	33.5	AJH108GALH	AJH108GALH		

Cancel

OK

Modify outdoor unit

Name

Otdr1

Comments

Refrigerant

R410A

Model

VR-II Heat Recovery space saving combination

Model

☒ Manual selection
 

AJHA90GALH

PS

3N, 400V, 50Hz

Combination

70%

Language No

70 %

Full Load

Partial Load

Outdoor dry bulb temperature

Cooling

C

35.0

Heating

C

7.0

Actual capacity

Cooling

17.6

kW

Heating

20.8

kW

Piping

Actual piping length

m

7.5

Position of outdoor unit relative to indoor unit

☐ Higher
 ☒ Same Floor
 ☐ Lower

Height difference between outdoor and indoor units

m

0.0

選擇 “最佳室外機機型”



## 部分加載功能(1/6)

使用部分負荷時，可以通過調節室內機的運轉率來降低室外機的容量。

①當選定的室內機進行100%的操作  
→使用滿載。

②從所有空調選擇考慮非操作室內機的型號。運行率(%)可以設定為製冷和製熱。  
→使用部分負載。

③假設有部分室內機運行，每個房間100%運行室內機，則選擇機型。  
→使用部分裝入操作。

## 部分加載功能(2/6)

Input new outdoor unit

Name: Otdr1  
Comments:   
Refrigerant: R410A  
Model: VR-II Heat Recovery space saving combination  
Type:   
Model: ☒ Manual selection  
AJHA72GALH  
PS: 3N, 400V, 50Hz  
Combination: 100%  
Language No: 100 %  
Outdoor dry bulb temperature  
Cooling: C 35.0 Heating: C 7  
Actual capacity  
Cooling: 16.5 kW Heating: 19.5 kW  
Piping  
Actual piping length: m 7.5  
Position of outdoor unit relative to indoor unit  
☐ Higher ☒ Same Floor ☐ Lower  
Height difference between outdoor and indoor units: m 0

73.7%  
Otdr1 AJHA72GALH  
Indr1 AUXB04GALH  
Indr2 AUXB04GALH  
Indr3 AUXB04GALH  
Indr4 AUXB04GALH  
Indr5 AUXB04GALH  
Indr6 AUXB04GALH  
Indr7 AUXB04GALH  
Indr8 AUXB04GALH  
Indr12 AUXB04GALH

Indoor unit not yet connected  
Indr16 Compact cassette

☐ Full Load  
☒ Partial Load  
Operating ratio C: 20%  
Operating ratio H: 20%

選擇全載

選擇部分負載  
\*“部分負載”值也可以從“優先”

選擇部分加載操作

Partial Load operation

Cancel OK

## 部分加載功能(3/6)

Input new outdoor unit

Name: Otdr1  
Comments:  
Refrigerant: R410A  
Model: VR-II Heat Recovery space saving combination  
Model: Manual selection  
AJHA72GALH  
PS: 3N, 400V, 50Hz  
Combination: 100%  
Language No: 100 %  
Operating ratio C: 20%  
Operating ratio H: 20%

Outdoor dry bulb temperature  
Cooling: C 35.0 Heating: C 7  
Actual capacity  
Cooling: 16.5 kW Heating: 19.5 kW  
Piping  
Actual piping length: m 7.5  
Position of outdoor unit relative to indoor unit  
Higher ☐ Same Floor ☒ Lower ☐  
Height difference between outdoor and indoor units: m 0

Partial Load operation

選擇“部分加載操作”



打開“部分加載操作”

Partial Load operation

Full Load operation Partial Load operation

Outdoor Model  
Combination: 150%  
Rated Capacity  
Cooling  
Heating  
Actual Capacity(outdoor)  
Cooling  
Heating  
Actual Capacity(indoor)  
Cooling  
Heating

Partial load ratio  
Operating ratio designation  
Cooling: 88 %  
Heating: 88 %  
Partial Indoor designation

Reset Check capacity  
Cancel OK

“室內/室外”操作比例可以改變

所有室內機的運行率都可以改變

## 部分加載功能(4/6)

Partial Load operation

Full Load operation    Partial Load operation

Outdoor Model

Combination

Rated Capacity

  Cooling

  Heating

Actual Capacity(outdoor)

  Cooling

  Heating

Total indoor capa.

  Cooling

  Heating

Actual Capacity(indoor)

  Cooling

  Heating

Combination: 150%

Partial load ratio

☒ Operating ratio designation

  Cooling: 88 %

  Heating: 88 %

☐ Partial Indoor designation

Reset    Check capacity    Cancel    OK

選擇“檢查容量”



計算結果出現。

顯示計算結果。

左：滿載操作

右：部分加載操作

Full Load operation    Partial Load operation

	Full Load operation	Partial Load operation
Outdoor Model	AJY216LALBH	AJY198LALBH
Combination	132.4%	144.2%
Rated Capacity		
Cooling	68.0 kW	62.4 kW
Heating	76.5 kW	70.0 kW
Actual Capacity(outdoor)		
Cooling	69.9 kW	65.2 kW
Heating	60.6 kW	55.9 kW
Total indoor capa.		
Cooling	74.5 kW	74.5 kW
Heating	82.0 kW	82.0 kW
Actual Capacity(indoor)		
Cooling	74.5 kW	74.5 kW
Heating	60.5 kW	56 kW

Combination: 150%

Partial load ratio

☒ Operating ratio designation

  Cooling: 88 %

  Heating: 88 %

☐ Partial Indoor designation

Reset    Check capacity    Cancel    OK

## 部分加載功能 (5/6)

Combination  
150%  
150 %

Partial load ratio  
☐ Operating ratio designation  
☒ Partial Indoor designation

Cooling 88 %  
Heating 88 %

Indoor Model	Check Cooling	Check Heating
ARXC60GATH	<input checked="" type="checkbox"/>	<input type="checkbox"/>
ARXC60GATH	<input type="checkbox"/>	<input checked="" type="checkbox"/>
ARXC60GATH	<input checked="" type="checkbox"/>	<input type="checkbox"/>
ARXC60GATH	<input type="checkbox"/>	<input type="checkbox"/>
ARXC60GATH	<input type="checkbox"/>	<input type="checkbox"/>

Indoor Operating ratio  
Check with the indoor unit is operating rate of 100%. Please enter the operating rate of the check without the indoor unit.

80 % 80 %

Reset Check capacity

Cancel OK

選擇組合能力

選擇組合能力

重新計算操作比率並顯示“部分室內指定”中設置的內容

點選全部

選擇“部分室內指定”

室內機檢查的開工率為100%。

請輸入目前的室內機效率

## 部分加載功能(6/6)

Partial Load operation

	Full Load operation	Partial Load operation
Outdoor Model	AJY216LALBH	AJY198LALBH
Combination	132.4%	144.2%
Rated Capacity		
Cooling	68.0 kW	62.4 kW
Heating	76.5 kW	70.0 kW
Actual Capacity(outdoor)		
Cooling	69.9 kW	65.2 kW
Heating	60.6 kW	55.9 kW
Total indoor capa.		
Cooling	74.5 kW	74.5 kW
Heating	82.0 kW	82.0 kW
Actual Capacity(indoor)		
Cooling	74.5 kW	74.5 kW
Heating	60.5 kW	56 kW

Combination: 150%  
150 %

Partial load ratio  
☐ Operating ratio designation  
☒ Partial Indoor designation

Cooling: 88 %  
Heating: 88 %

All All

Indoor Model	Check Cooling	Check Heating
ARXC60GATH	<input checked="" type="checkbox"/>	<input type="checkbox"/>
ARXC60GATH	<input type="checkbox"/>	<input checked="" type="checkbox"/>
ARXC60GATH	<input checked="" type="checkbox"/>	<input type="checkbox"/>
ARXC60GATH	<input type="checkbox"/>	<input type="checkbox"/>
ARXC60GATH	<input type="checkbox"/>	<input type="checkbox"/>

Indoor Operating ratio  
 Check with the indoor unit is operating rate of 100%. Please enter the operating rate of the check without the indoor unit.

80 % 80 %

Reset Check capacity Cancel OK

顯示計算結果。

左：滿載操作

右：部分加載操作

## 縮小管徑

Input new outdoor unit

Name: Otdr1

Comments:

Refrigerant: R410A

Model Type: V-III Heat pump energy efficiency combination

Model: ☐ Manual selection

PS: ---

Combination: 100%

Language No:

Outdoor dry bulb temperature

Cooling: C 35 Heating: C 7

Actual capacity

Cooling: kW Heating: kW

Piping

Actual piping length: m 7.5

Position of outdoor unit relative to indoor unit

☐ Higher ☒ Same Floor ☐ Lower

Height difference between outdoor and indoor units: m 0.0

Downsizing of pipe diameter

☐ Apply

Indoor unit not yet connected

- Indr1 Compact cassette
- Indr2 Compact cassette
- Indr3 Compact cassette
- Indr4 Compact cassette
- Indr5 Compact cassette
- Indr6 Compact cassette
- Indr7 Compact cassette
- Indr8 Compact cassette
- Indr9 Compact cassette
- Indr10 Compact cassette
- Indr16 Compact cassette
- Indr17 Compact cassette
- Indr18 Compact cassette
- Indr19 Compact cassette
- Indr20 Compact cassette
- Indr21 Compact cassette

Partial Load operation

Cancel OK

在“管道”畫面(僅支持區域)(\* 2)中選擇“V-III”，然後設置“手動輸入管道長度”

\*2:在“管道”視窗上描述了“管道直徑縮小”的描述