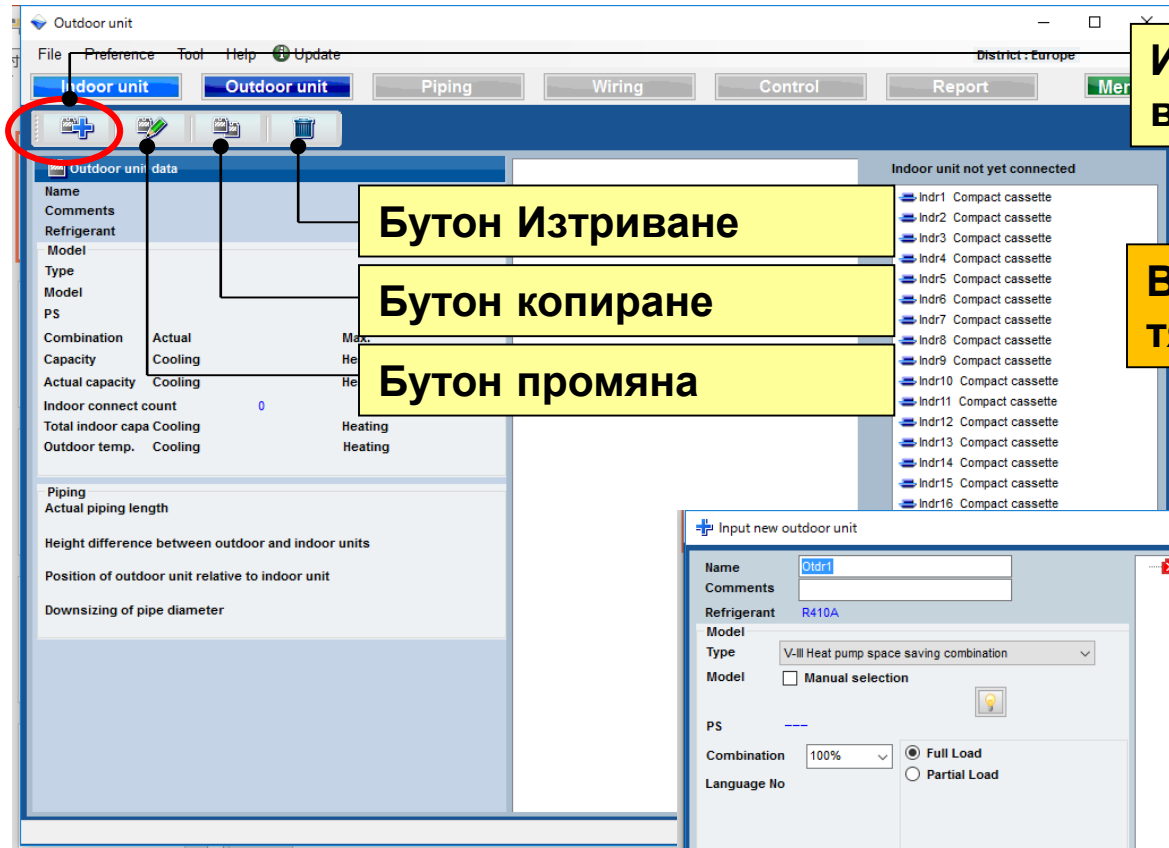
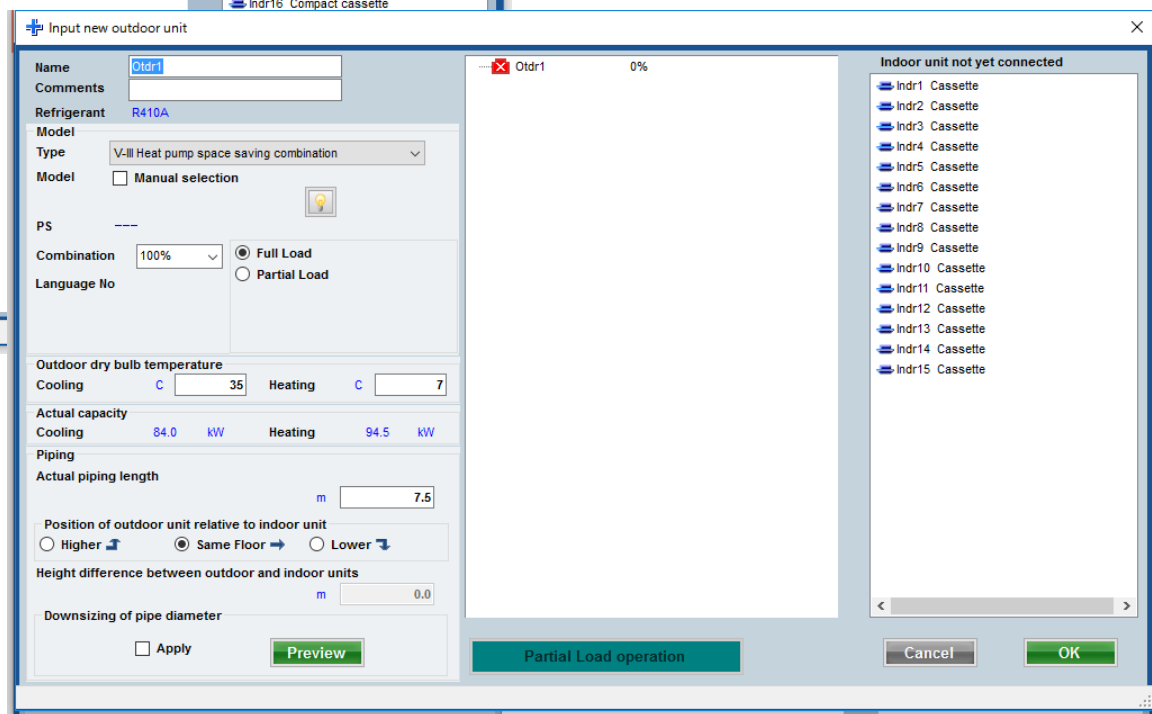


Външно тяло (1/4)



Изберете “Добави ново външно тяло”

Въвеждане на ново външно тяло



Външно тяло (2/4)

Input new outdoor unit

Name

Comments

Refrigerant

Model

Type

Model ☐ Manual selection

PS

Language No

Full Load ☒

Partial Load ☐

Outdoor dry bulb temperature

Cooling

Heating

Actual capacity

Cooling kW

Heating kW

Piping

Actual piping length m

Position of outdoor unit relative to indoor unit

☐ Higher ☒ Same Floor ☐ Lower

Height difference between outdoor and indoor units m

Downsizing of pipe diameter

☐ Apply

Въведете желаното име

Въведете коментар. (до 10 символа)
Свободен текст. (Пр.: Покрив, E1)

Изберете тип външно тяло

Изберете модел външно тяло

Списък с мощности външно тяло

Изберете ограничение. Ако ограниченията са превишени, външното тяло автоматично се сменя с по-голям модел.

Изберете тип натоварване

Въведете условия за външното тяло. Ако няма специфични условия, въведете под номиналните условия за охлаждане "35C" и отопление "7C".

Въведете стойност "Дължина на тръбите" и "Денивелация".
Въведете позиция на външното спрямо вътрешното тяло. (※1)

Намаляване диаметъра на тръбата (*1)

Partial Load operation

Cancel

OK

Работа с частичен товар

(※1) Коефициентът на загуба се изчислява автоматично.

Външно тяло (3/4)

Червен маркер показва извън допустимите граници.

Използвайте екрана за регистрация на вътр.тяло за да го групирате.
(Влачи&пусни)

Моделът вътрешно и външно тяло се избират автоматично

Input new outdoor unit

Name: Otdr1

Comments:

Refrigerant: R410A

Model: VR-II Heat Recovery space saving combination

Type: ☐ Manual selection

PS: ☒ Full Load ☐ Partial Load

Combination: 100%

Language No:

Outdoor dry bulb temperature

Cooling: C 35 Heating: C 7

Actual capacity

Cooling: 84.0 kW Heating: 94.5 kW

Piping

Actual piping length: m 7.5

Position of outdoor unit relative to indoor unit

☐ Higher ☒ Same Floor ☐ Lower

Height difference between outdoor and indoor units

m 0.0

Indoor unit not yet connected

- Indr1 Cassette
- Indr2 Cassette
- Indr3 Cassette
- Indr4 Cassette
- Indr5 Cassette
- Indr6 Cassette
- Indr7 Cassette
- Indr8 Cassette
- Indr9 Cassette
- Indr10 Cassette
- Indr11 Cassette
- Indr12 Cassette
- Indr13 Cassette
- Indr14 Cassette
- Indr15 Cassette

Otdr1 AJY270GALH 98.8%

- Indr1 AUXD18GALH
- Indr2 AUXD18GALH
- Indr3 AUXD18GALH
- Indr4 AUXD18GALH
- Indr5 AUXD18GALH
- Indr6 AUXD18GALH
- Indr7 AUXD18GALH
- Indr8 AUXD18GALH
- Indr9 AUXD18GALH
- Indr10 AUXD18GALH
- Indr11 AUXD18GALH
- Indr12 AUXD18GALH
- Indr13 AUXD18GALH
- Indr14 AUXD18GALH
- Indr15 AUXD18GALH

Partial Load operation

Cancel OK

Input new outdoor unit

Name: Otdr1

Comments:

Refrigerant: R410A

Model: VR-II Heat Recovery space saving combination

Type: ☐ Manual selection

PS: 3N, 400V, 50Hz

Combination: 100%

Language No: 100 %

Outdoor dry bulb temperature

Cooling: C 35 Heating: C 7

Actual capacity

Cooling: 84.0 kW Heating: 94.5 kW

Piping

Actual piping length: m 7.5

Position of outdoor unit relative to indoor unit

☐ Higher ☒ Same Floor ☐ Lower

Height difference between outdoor and indoor units

m 0.0

Indoor unit not yet connected

Otdr1 AJY270GALH 98.8%

- Indr1 AUXD18GALH
- Indr2 AUXD18GALH
- Indr3 AUXD18GALH
- Indr4 AUXD18GALH
- Indr5 AUXD18GALH
- Indr6 AUXD18GALH
- Indr7 AUXD18GALH
- Indr8 AUXD18GALH
- Indr9 AUXD18GALH
- Indr10 AUXD18GALH
- Indr11 AUXD18GALH
- Indr12 AUXD18GALH
- Indr13 AUXD18GALH
- Indr14 AUXD18GALH
- Indr15 AUXD18GALH

Partial Load operation

Cancel OK

Продуктова информация за двете тела и снимка

Настройка външно тяло

Design Simulator

Вътрешно тяло

Изберете “Вътрешно тяло”

Детайлни спецификации на вътрешните тела

Indoor unit

File Preference Tool Help Update

Indoor unit Outdoor unit Piping Wiring Control

Details of indoor unit

Indoor unit type image

Name	Comments	Model	Tmp C (C%)	Tmp H (C)	Rq TC (kW)	TC (kW)	Rq SC (kW)	SC (kW)	Rq HC (kW)	HC (kW)
Indr1		AUXD18GALH	27.0/ 43.4	20	0.5	5.0	0.5	4.1	0.5	6.0
Indr2		AUXD18GALH	27.0/ 43.4	20	0.5	5.0	0.5	4.1	0.5	6.0
Indr3		AUXD18GALH	27.0/ 43.4	20	0.5	5.0	0.5	4.1	0.5	6.0
Indr4		AUXD18GALH	27.0/ 43.4	20	0.5	5.0	0.5	4.1	0.5	6.0
Indr5		AUXD18GALH	27.0/ 43.4	20	0.5	5.0	0.5	4.1	0.5	6.0
Indr6		AUXD18GALH	27.0/ 43.4	20	0.5	5.0	0.5	4.1	0.5	6.0
Indr7		AUXD18GALH	27.0/ 43.4	20	0.5	5.0	0.5	4.1	0.5	6.0
Indr8		AUXD18GALH	27.0/ 43.4	20	0.5	5.0	0.5	4.1	0.5	6.0
Indr9		AUXD18GALH	27.0/ 43.4	20	0.5	5.0	0.5	4.1	0.5	6.0
Indr10		AUXD18GALH	27.0/ 43.4	20	0.5	5.0	0.5	4.1	0.5	6.0
Indr11		AUXD18GALH	27.0/ 43.4	20	0.5	5.0	0.5	4.1	0.5	6.0
Indr12		AUXD18GALH	27.0/ 43.4	20	0.5	5.0	0.5	4.1	0.5	6.0
Indr13		AUXD18GALH	27.0/ 43.4	20	0.5	5.0	0.5	4.1	0.5	6.0
Indr14		AUXD18GALH	27.0/ 43.4	20	0.5	5.0	0.5	4.1	0.5	6.0
Indr15		AUXD18GALH	27.0/ 43.4	20	0.5	5.0	0.5	4.1	0.5	6.0

Indoor unit value

Model
AUXD18GALH
Capacity
5.6 kW
Fan air flow rate
High / 319.4 l/s
Sound pressure level
36 dB(A)
Input power
39 W

Indoor unit

File Preference Tool Help Update

Indoor unit Outdoor unit Piping Wiring Control Report Menu

Details of indoor unit

Indoor unit type image

Name	Comments	Model	Tmp C (C%)	Tmp H (C)	Rq TC (kW)	TC (kW)	Rq SC (kW)	SC (kW)	Rq HC (kW)	HC (kW)
Indr1		AUXD18GALH	27.0/ 43.4	20	0.5	5.0	0.5	4.1	0.5	6.0
Indr2		AUXD18GALH	27.0/ 43.4	20	0.5	5.0	0.5	4.1	0.5	6.0
Indr3		AUXD18GALH	27.0/ 43.4	20	0.5	5.0	0.5	4.1	0.5	6.0
Indr4		AUXD18GALH	27.0/ 43.4	20	0.5	5.0	0.5	4.1	0.5	6.0
Indr5		AUXD18GALH	27.0/ 43.4	20	0.5	5.0	0.5	4.1	0.5	6.0
Indr6		AUXD18GALH	27.0/ 43.4	20	0.5	5.0	0.5	4.1	0.5	6.0
Indr7		AUXD18GALH	27.0/ 43.4	20	0.5	5.0	0.5	4.1	0.5	6.0
Indr8		AUXD18GALH	27.0/ 43.4	20	0.5	5.0	0.5	4.1	0.5	6.0
Indr9		AUXD18GALH	27.0/ 43.4	20	0.5	5.0	0.5	4.1	0.5	6.0
Indr10		AUXD18GALH	27.0/ 43.4	20	0.5	5.0	0.5	4.1	0.5	6.0
Indr11		AUXD18GALH	27.0/ 43.4	20	0.5	5.0	0.5	4.1	0.5	6.0
Indr12		AUXD18GALH	27.0/ 43.4	20	0.5	5.0	0.5	4.1	0.5	6.0
Indr13		AUXD18GALH	27.0/ 43.4	20	0.5	5.0	0.5	4.1	0.5	6.0
Indr14		AUXD18GALH	27.0/ 43.4	20	0.5	5.0	0.5	4.1	0.5	6.0
Indr15		AUXD18GALH	27.0/ 43.4	20	0.5	5.0	0.5	4.1	0.5	6.0

Indoor unit value

Model
AUXD18GALH
Capacity
5.6 kW
Fan air flow rate
High / 319.4 l/s
Sound pressure level
36 dB(A)
Input power
39 W

Списък с мощности (1/3)

Input new outdoor unit

Name: Otdr1
Comments:
Refrigerant: R410A
Model: VR-II Heat Recovery space saving combination
Type:
Model: ☐ Manual selection
AJYA90GALH
PS: 3N, 400V, 50Hz
Combination: 100% ☒ Full Load ☐ Partial Load
Language No: 100 %

Outdoor dry bulb temperature
Cooling: C 35 Heating: C 7
Actual capacity
Cooling: 28.0 kW Heating: 31.5 kW
Piping
Actual piping length: m 7.5
Position of outdoor unit relative to indoor unit
☐ Higher ☒ Same Floor ☐ Lower
Height difference between outdoor and indoor units: m 0.0

Partial L

Изчисляват се мощността и натоварването и се избира най-голямото външно тяло от серията.

Input new outdoor unit

Name: Otdr1
Comments:
Refrigerant: R410A
Model: VR-II Heat Recovery space saving combination
Type:
Model: ☒ Manual selection
AJYA90GALH
PS: 3N, 400V, 50Hz
Combination: 100% ☒ Full Load ☐ Partial Load
Language No: 100 %

Outdoor dry bulb temperature
Cooling: C
Actual capacity
Cooling: 28.0 kW
Piping

Outdoor capacity list

Combination (%)	HP	Capacity (kW)	Model name	Outdoor unit	Outdoor unit	Outdoor unit
100.0	10	28.0	AJYA90GALH	AJYA90GALH		
83.6	12	33.5	AJY108GALH	AJY108GALH		
70.0	14	40.0	AJY126GALH	AJY126GALH		

Upper bound: 100%
Lower bound: 70%
Calculate
OK

Използвайте “Списък с мощности” за да можете да определите размера на натоварването и съотношение на мощността и да можете да изберете измежду няколко външни тела.

Списък с мощности (2/3)

+ Input new outdoor unit

Name

Comments

Refrigerant **R410A**

Model

Type VR-II Heat Recovery space saving combination

Model ☒ Manual selection

PS **3N, 400V, 50Hz**

Изберете “Списък с мощности”



Екран с възможни модели

Outdoor capacity list

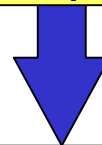
Combination (%)	HP	Capacity (kW)	Model name	Outdoor unit	Outdoor unit	Outdoor unit
62.9	10	28.0	AJHA90GALH	AJHA90GALH		
52.5	12	33.5	AJH108GALH	AJH108GALH		

Upper bound

Lower bound

Изберете “Граници”

Изберете
“Калкулация”



Външните тела в зададените
граници са показани в списъка

Списък с мощности (3/3)

Outdoor capacity list

Combination (%)	HP	Capacity (kW)	Model name	Outdoor unit	Outdoor unit	Outdoor unit
62.9	10	28.0	AJHA90GALH	AJHA90GALH		
52.5	12	33.5	AJH108GALH	AJH108GALH		

Cancel OK

Изберете “Оптимален модел
ВЪНШНО ТЯЛО”

Modify outdoor unit

Name: Otdr1

Comments:

Refrigerant: R410A

Model: VR-II Heat Recovery space saving combination

Type: VR-II Heat Recovery space saving combination

Model: ☒ Manual selection

Model: AJHA90GALH

PS: 3N, 400V, 50Hz

Combination: 70%

Language No: 70 %

Full Load ☒ Partial Load ☐

Outdoor dry bulb temperature

Cooling: C 35.0 Heating: C 7.0

Actual capacity

Cooling: 17.6 kW Heating: 20.8 kW

Piping

Actual piping length: m 7.5

Position of outdoor unit relative to indoor unit

Higher ☐ Same Floor ☒ Lower ☐

Height difference between outdoor and indoor units: m 0.0

Функция частично натоварване 1/6

При използване на частично натоварване, мощността на външното тяло може да се намали чрез настройка работната степен на вътрешното тяло.

① Когато определено вътрешно тяло работи на 100%
→ Използвайте пълно натоварване.

② Когато са избрани модели с презумпция, че вътрешните тела няма да работят. Работната степен (%) може да се зададе за охлаждане и отопление.
→ Използвайте частично натоварване.

③ Когато са избрани модели с презумпция, че някои вътрешни тела ще работят частично, други на 100%.
→ Използвайте частично натоварване.

Функция частично натоварване 2/6

Input new outdoor unit

Name: Otdr1

Comments:

Refrigerant: R410A

Model:

Type: VR-II Heat Recovery space saving combination

Model: ☒ Manual selection
AJHA72GALH

PS: 3N, 400V, 50Hz

Combination: 100%

Language No: 100%

Outdoor dry bulb temperature:
Cooling: C 35.0 Heating: C 7

Actual capacity:
Cooling: 16.5 kW Heating: 19.5 kW

Piping:
Actual piping length: m 7.5

Position of outdoor unit relative to indoor unit:
☐ Higher ☒ Same Floor ☐ Lower

Height difference between outdoor and indoor units: m 0

Indoor unit not yet connected
Indr16 Compact cassette

Partial Load operation

Cancel OK

Full Load
Partial Load
Operating ratio C: 20%
Operating ratio H: 20%

Пълно натоварване

Частично натоварване
*Стойността му може да се зададе от "Предпочитания"

Частично натоварване

Функция частично натоварване 3/6

Input new outdoor unit

Name: Otdr1

Comments:

Refrigerant: R410A

Model: VR-II Heat Recovery space saving combination

Model: Manual selection

PS: 3N, 400V, 50Hz

Combination: 100%

Language No: 100 %

Operating ratio C: 20%

Operating ratio H: 20%

Outdoor dry bulb temperature: Cooling C 35.0 Heating C 7

Actual capacity: Cooling 16.5 kW Heating 19.5 kW

Piping: Actual piping length m 7.5

Position of outdoor unit relative to indoor unit: Higher Same Floor Lower

Height difference between outdoor and indoor units m 0

Partial Load operation

„Частично натоварване“



Отваря екран „Частично натоварване“

Partial Load operation

Full Load operation Partial Load operation

Outdoor Model

Combination: 150%

Rated Capacity: Cooling Heating

Actual Capacity(outdoor): Cooling Heating

Actual Capacity(indoor): Cooling Heating

Partial load ratio: Operating ratio designation

Cooling: 88 %

Heating: 88 %

Partial Indoor designation

Reset Check capacity

Cancel OK

Работната степен на “Вътрешно / Външно тяло” може да се смени

Може да се смени работната степен на всички вътрешни тела

Функция частично натоварване 4/6

Partial Load operation

Full Load operation Partial Load operation

Outdoor Model

Combination

Rated Capacity

Cooling

Heating

Actual Capacity(outdoor)

Cooling

Heating

Total indoor capa.

Cooling

Heating

Actual Capacity(indoor)

Cooling

Heating

Combination 150%

Partial load ratio

☒ Operating ratio designation

Cooling 88 %

Heating 88 %

☐ Partial Indoor designation

Reset

Check capacity

Cancel

OK

Изберете “Проверка на капацитета”



Появяват се резултатите от
калкулацията

Резултати от калкулацията.
Ляво: Пълно натоварване
Дясно: Частично натоварване

Full Load operation Partial Load operation

Outdoor Model

Combination

Rated Capacity

Cooling

Heating

Actual Capacity(outdoor)

Cooling

Heating

Total indoor capa.

Cooling

Heating

Actual Capacity(indoor)

Cooling

Heating

Combination 150%

Partial load ratio

☒ Operating ratio designation

Cooling 88 %

Heating 88 %

☐ Partial Indoor designation

Reset

Check capacity

Cancel

OK

	Full Load operation	Partial Load operation
Outdoor Model	AJY216LALBH	AJY198LALBH
Combination	132.4%	144.2%
Rated Capacity		
Cooling	68.0 kW	62.4 kW
Heating	76.5 kW	70.0 kW
Actual Capacity(outdoor)		
Cooling	69.9 kW	65.2 kW
Heating	60.6 kW	55.9 kW
Total indoor capa.		
Cooling	74.5 kW	74.5 kW
Heating	82.0 kW	82.0 kW
Actual Capacity(indoor)		
Cooling	74.5 kW	74.5 kW
Heating	60.5 kW	56 kW

Функция частично натоварване 5/6

Combination
150%
150 %

Partial load ratio
☐ Operating ratio designation
☒ Partial Indoor designation

Cooling 88 %
Heating 88 %

Indoor Model	Check Cooling	Check Heating
ARXC60GATH	<input checked="" type="checkbox"/>	<input type="checkbox"/>
ARXC60GATH	<input type="checkbox"/>	<input checked="" type="checkbox"/>
ARXC60GATH	<input checked="" type="checkbox"/>	<input type="checkbox"/>
ARXC60GATH	<input type="checkbox"/>	<input type="checkbox"/>
ARXC60GATH	<input type="checkbox"/>	<input type="checkbox"/>

Indoor Operating ratio
Check with the indoor unit is operating rate of 100%. Please enter the operating rate of the check without the indoor unit.

80 % 80 %

Reset Check capacity Cancel OK

Изберете капацитет на комбинацията

Изберете капацитет на комбинацията

Работната степен е пре-изчислена и показана с детайли в “Частично натоварване на вътрешните тела”

Маркирай всички

Избери “Частично натоварване на вътрешните тела”

Маркирано - вътрешното тяло работи на 100%.

Въведете работната степен на маркираното без вътрешното тяло.

Функция частично натоварване 6/6

Partial Load operation

	Full Load operation	Partial Load operation
Outdoor Model	AJY216LALBH	AJY198LALBH
Combination	132.4%	144.2%
Rated Capacity		
Cooling	68.0 kW	62.4 kW
Heating	76.5 kW	70.0 kW
Actual Capacity(outdoor)		
Cooling	69.9 kW	65.2 kW
Heating	60.6 kW	55.9 kW
Total indoor capa.		
Cooling	74.5 kW	74.5 kW
Heating	82.0 kW	82.0 kW
Actual Capacity(indoor)		
Cooling	74.5 kW	74.5 kW
Heating	60.5 kW	56 kW

Combination: 150%
150 %

Partial load ratio
☐ Operating ratio designation
☒ Partial Indoor designation

Cooling: 88 %
Heating: 88 %

All All

Indoor Model	Check Cooling	Check Heating
ARXC60GATH	<input checked="" type="checkbox"/>	<input type="checkbox"/>
ARXC60GATH	<input type="checkbox"/>	<input checked="" type="checkbox"/>
ARXC60GATH	<input checked="" type="checkbox"/>	<input type="checkbox"/>
ARXC60GATH	<input type="checkbox"/>	<input type="checkbox"/>
ARXC60GATH	<input type="checkbox"/>	<input type="checkbox"/>

Indoor Operating ratio
Check with the indoor unit is operating rate of 100%. Please enter the operating rate of the check without the indoor unit.

80 % 80 %

Reset Check capacity Cancel OK

Резултати от калкулацията.
Ляво: Пълно натоварване
Дясно: Частично натоварване

Намаляване диаметъра на тръбата

Input new outdoor unit

Name: Otdr1

Comments:

Refrigerant: R410A

Model Type: V-III Heat pump energy efficiency combination

Model: ☐ Manual selection

PS: ---

Combination: 100%

Language No: ☐ Full Load ☐ Partial Load

Outdoor dry bulb temperature

Cooling: C 35 Heating: C 7

Actual capacity

Cooling: kW Heating: kW

Piping

Actual piping length: m 7.5

Position of outdoor unit relative to indoor unit

☐ Higher ☒ Same Floor ☐ Lower

Height difference between outdoor and indoor units: m 0.0

Downsizing of pipe diameter

☐ Apply

Indoor unit not yet connected

- Indr1 Compact cassette
- Indr2 Compact cassette
- Indr3 Compact cassette
- Indr4 Compact cassette
- Indr5 Compact cassette
- Indr6 Compact cassette
- Indr7 Compact cassette
- Indr8 Compact cassette
- Indr9 Compact cassette
- Indr10 Compact cassette

Partial Load operation

Cancel OK

Диаметърът на тръбата може да се намали избирайки V-III след което “Ръчно въвеждане дължина на тръбата” в меню “Тръбно трасе” (само за определени региони) (*2)

*2: Подробно описание за Намаляване диаметъра на тръбата ще намерите в „Тръбно трасе“