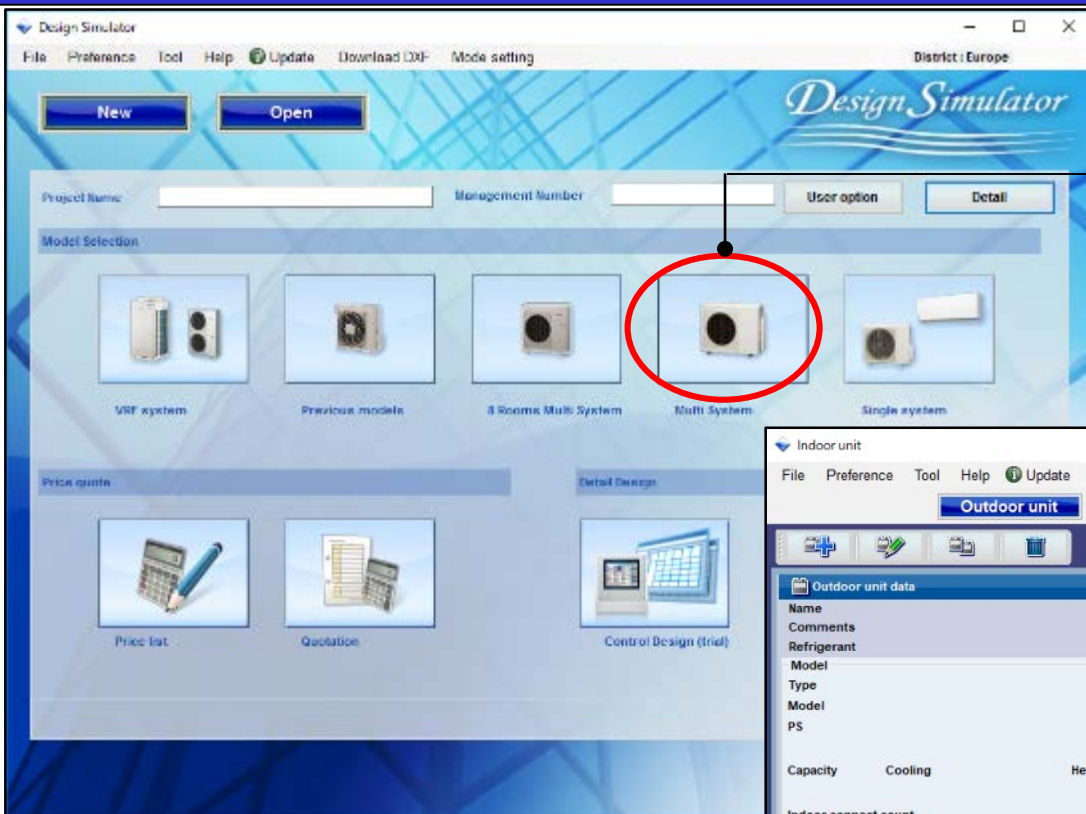
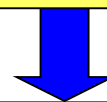


初始設定

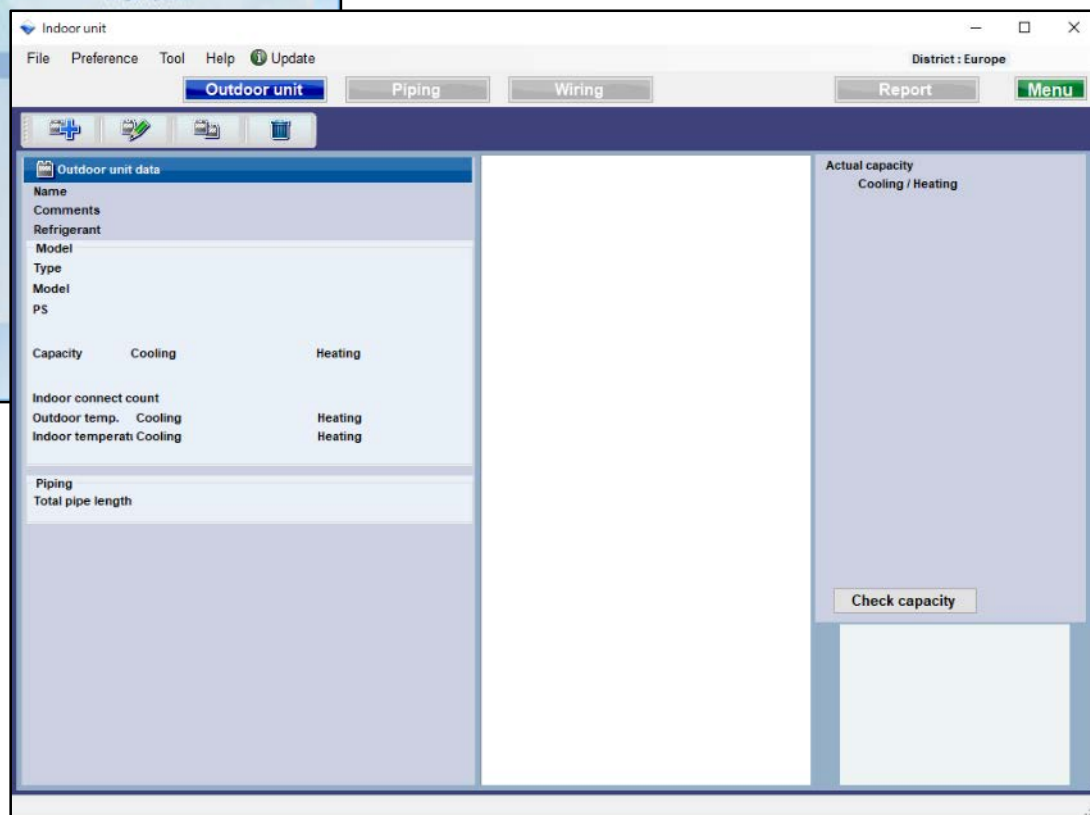
選機軟體



選擇“新增室內機”



打開 輸入室外機初始註冊視窗



室內·室外設置方法(2/4)

通過檢查室內機來計算容量

Modify outdoor unit

Outdoor

Pipe length & Height difference relative to outdoor unit

Name: Indr1 Comments: [] Room setting

m: 5.0 6.35x9.52

Type: Wall mounted(LM) Capacity: 2.00 kW Class

Model: ASYG07LMCA

Refrigerant: R410A

Type: 4 Rooms Multi System

Model: A0YG30LAT4

PS: 1 ϕ , 230V, 50Hz

Outdoor dry bulb temperature

Cooling: C 35.0

Heating: C 7.0

Indoor temperature

Cooling: C 27.0

DBT: RH % 43.4

Heating: DBT: C 20.0

Actual capacity

Cooling: 7.50 kW

Heating: 8.80 kW

Total pipe length: 20.0 m (Max.70.0 m)

Additional refrigerant: 0.00 kg (Max.0.50 kg)

Check capacity

Cancel OK

優先輸入名稱顯示

選擇類型

選擇室外機型號

輸入設計條件。
如果不決定設計條件，請在冷卻“27C”和加熱“20C”的額定條件下輸入。

計算實際容量並顯示

Actual capacity

Operation	
TC	2.50 kW
SC	1.81 kW
HC	2.93 kW

Operation	
TC	2.50 kW
SC	1.81 kW
HC	2.93 kW

Operation	
TC	-- kW
SC	-- kW
HC	-- kW

Operation	
TC	2.50 kW
SC	1.81 kW
HC	2.93 kW

室內·室外設置方法(3/4)

優先輸入名稱顯示

房間設定

選擇室內機的類型

選擇室內機型號

輸入“實際管道長度”和“高差”的值。
選擇室外機相對於室內機的位置。

Modify outdoor unit

Outdoor

Pipe length & Height difference relative to outdoor unit

Name Indr1 Comments

m 5.0 6.35x9.52

Type Wall mounted(LM)

Model ASYG07LMCA Capacity 2.00 kW Class

Room setting

Operation

TC 2.50 kW

SC 1.81 kW

HC 2.93 kW

Name Indr2 Comments

m 5.0 6.35x9.52

Type Wall mounted(LM)

Model ASYG07LMCA Capacity 2.00 kW Class

Room setting

Operation

TC 2.50 kW

SC 1.81 kW

HC 2.93 kW

Name Indr3 Comments

m 5.0 6.35x9.52

Type Wall mounted(LM)

Model ASYG07LMCA Capacity 2.00 kW Class

Room setting

Operation

TC 2.50 kW

SC 1.81 kW

HC 2.93 kW

Name Indr4 Comments

m 5.0 6.35x9.52

Type Wall mounted(LM)

Model ASYG07LMCA Capacity 2.00 kW Class

Room setting

Operation

TC 2.50 kW

SC 1.81 kW

HC 2.93 kW

Check capacity

Cancel OK

Total pipe length 20.0 m (Max.70.0 m)

Additional refrigerant 0.00 kg (Max.0.50 kg)

Name Otdr1 Comments

Refrigerant R410A

Type 4 Rooms Multi System

Model AOYG30LAT4

PS 1 φ, 230V, 50Hz

Outdoor dry bulb temperature

Cooling C 35.0

Heating C 7.0

Indoor temperature

Cooling C 27.0

DBT RH % 43.4

Heating DBT C 20.0

Actual capacity


Cooling 7.50 kW

Heating 8.80 kW

多聯系統

Input new outdoor unit

Outdoor



Name: Otdr1
Comments:
Refrigerant: R410A
Type: 4 Rooms Multi System
Model:

Pipe length & Height difference relative to outdoor unit

Name	Comments	Type	Model	Capacity
Indr1		Wall mounted(LM)	ASYG07LMCA	2.00 kW Class
Indr2		Wall mounted(LM)	ASYG07LMCA	2.00 kW Class
Indr3		Wall mounted(LM)	ASYG07LMCA	2.00 kW Class

Actual capacity

Operation	TC	SC	HC
<input checked="" type="checkbox"/>	-- kW	-- kW	-- kW

管道長度·高度差輸入(一對多系統)

選擇室外機類型和室外機型號

選擇室內機類型和室內機型號

輸入管道長度



Modify outdoor unit

Outdoor

Pipe length & Height difference relative to outdoor unit

Name: Indr1 Comments: Room setting

m: 5.0 6.35x9.52

Name: Indr2 Comments: Room setting

m: 5.0 6.35x9.52

Name: Indr3 Comments: Room setting

m: 5.0 6.35x9.52

Name: Indr4 Comments: Room setting

m: 5.0 6.35x9.52

Name: Oldr1 Comments: Refrigerant: R410A Type: 4 Rooms Multi System Model: AOYG30LAT4 PS: 1 φ, 230V, 50Hz Outdoor dry bulb temperature Cooling: C 35.0 Heating: C 7.0 Indoor temperature Cooling DBT: C 27.0 RH %: 43.4 Heating DBT: C 20.0 Actual capacity Cooling: 7.50 kW Heating: 8.80 kW

Type: Wall mounted(LM) Model: ASYG07LMCA Capacity: 2.00 kW Class

Type: Wall mounted(LM) Model: ASYG07LMCA Capacity: 2.00 kW Class

Type: Wall mounted(LM) Model: ASYG07LMCA Capacity: 2.00 kW Class

Type: Wall mounted(LM) Model: ASYG07LMCA Capacity: 2.00 kW Class

Actual capacity

Operation

TC: 2.50 kW SC: 1.81 kW HC: 2.93 kW

Operation

TC: 2.50 kW SC: 1.81 kW HC: 2.93 kW

Operation

TC: 2.50 kW SC: 1.81 kW HC: 2.93 kW

Operation

TC: 2.50 kW SC: 1.81 kW HC: 2.93 kW

Check capacity

Total pipe length: 20.0 m (Max.70.0 m)

Additional refrigerant: 0.00 kg (Max.0.50 kg)

Cancel OK

同時 多聯系統

Input new outdoor unit

Outdoor

9.52x15.88 UTP-SX354

1.0 m

Indr1

5.0 m 6.35x12.70

Indr2

5.0 m 6.35x12.70

Indr3

Comments

Type

Compact Cassette(3Phase Triple)

Model

AUYG18LVLB

Room setting

Actual capacity

Operation

TC -- kW

SC -- kW

HC -- kW

Operation

TC -- kW

SC -- kW

HC -- kW

Operation

TC -- kW

SC -- kW

HC -- kW

Name

Otdr1

Comments

Refrigerant

R410A

Type

Simultaneous multi 3 phase Triple type

Model

管道長度·高度差輸入(多聯系統) (1/5)

Input new outdoor unit

Outdoor

UTP-SX354

9.52x15.88

1.0

Pipe length & Height difference relative to outdoor unit

Name: Indr1

Comments:

Type: Compact Cassette(3Phase Triple)

Model: AUYG18LVLB

Room setting

Name: Indr2

Comments:

Type: Compact Cassette(3Phase Triple)

Model: AUYG18LVLB

Room setting

Actual capacity

Operation

TC -- kW

SC -- kW

HC -- kW

Operation

TC -- kW

SC -- kW

HC -- kW

Operation

TC -- kW

SC -- kW

HC -- kW

Check capacity

Cancel

OK

Additional refrigerant 0.00 kg (Max.2.25 kg)

Name: Otdr1

Comments:

Refrigerant: R410A

Type: Simultaneous multi 3 phase Triple type

Model: AOYG54LATT

PS: 3N, 400V, 50Hz

Outdoor dry bulb temperature

Cooling: C 35.0

Heating: C 7.0

Indoor temperature

Cooling DBT: C 27.0

RH %: 43.4

Heating DBT: C 20.0

Actual capacity

Cooling: kW

Heating: kW

Pipe size change: 9.52(3/8)x15.88(5/8)**

Input pipe length

選擇類型
(多聯-同步控制)

更改管道尺寸

輸入管道長度

管道長度·高度差輸入(多聯系統) (2/5)

The screenshot shows the 'Input new outdoor unit' window. It is divided into several sections:

- Outdoor unit section (top left):** Includes a unit icon, a diagram showing a 1.0m pipe length, and a dropdown for 'Pipe size change' set to '9.52(3/8)x15.88(5/8)**'. A red box highlights the 'Input pipe length' button.
- Indoor unit section (middle):** A table with columns for Name, Type, Model, and Comments. It lists three indoor units (Indr1, Indr2, Indr3) with a pipe length of 5.0m and a height difference of 6.35x12.70. A red box highlights the 'Room setting' button for each unit.
- Actual capacity section (right):** Includes checkboxes for 'Operation' and 'Check capacity', and fields for 'TC', 'SC', and 'HC' with units 'kW'.

Annotations and workflow steps:

- 選擇室外機類型和室外機型號** (Select outdoor unit type and model): Points to the outdoor unit selection area.
- 選擇室內機類型和室內機型號** (Select indoor unit type and model): Points to the indoor unit selection area.
- 設置管道尺寸** (Set pipe size): Points to the 'Pipe size change' dropdown.
- 輸入管道長度** (Input pipe length): Points to the 'Input pipe length' button.
- 通過輸入管道長度按鈕輸入管道長度和同時多點的高差** (Input pipe length and simultaneously multiple points' height difference through the input pipe length button): Points to the 'Input pipe length' button.

At the bottom, there are buttons for 'Cancel' and 'OK', and a 'Check capacity' button.

Outdoor

Unit: UTP-SX354

Refrigerant: R410A

Type: Simultaneous multi 3 phase Triple type

Model: AOYG54LATT

PS: 3N, 400V, 50Hz

Outdoor dry bulb temperature

Cooling: C 35.0

Heating: C 7.0

Indoor temperature

Cooling: C 27.0

Heating: C 20.0

Actual capacity

Cooling: kW

Heating: kW

Pipe size change: 9.52(3/8)x15.88(5/8)**

Input pipe length

Pipe length & Height difference relative to outdoor unit

Name	Distance (m)	Height Difference (m)
Indr1	5.0	6.35x12.70
Indr2	5.0	6.35x12.70
Indr3	5.0	6.35x12.70

Actual capacity

Room 3

Type: Compact Cassette(3Phase Triple)

Model: AUYG18LVLB

HC -- kW

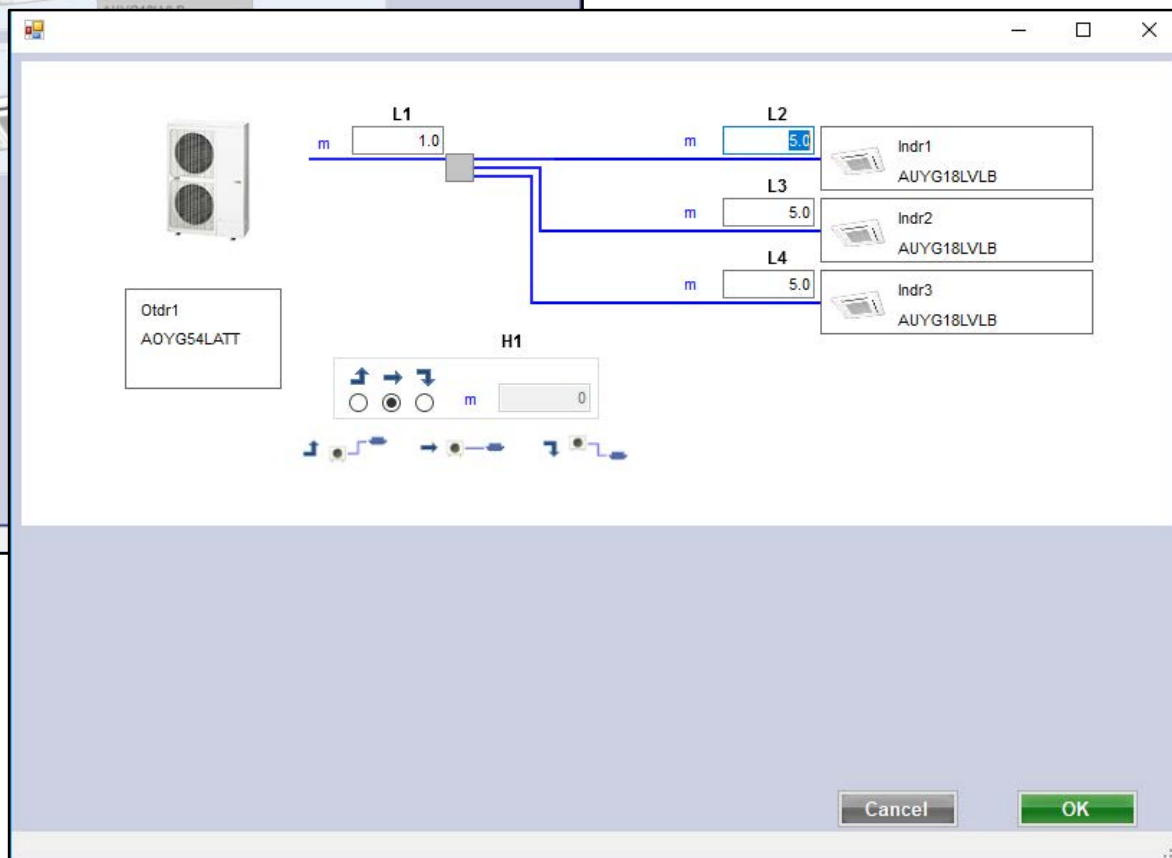
選擇“輸入管”

打開輸入管

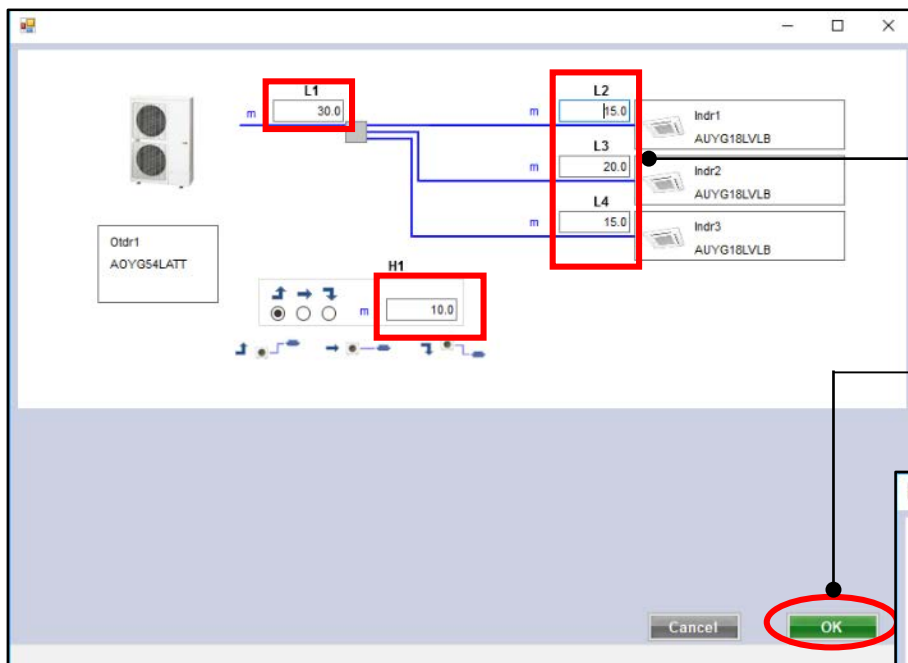
Schematic Diagram:

Outdoor unit (OTDR1) connected to indoor unit (H1) via piping. Pipe length L1 is 1.0 m.

打開 輸入管道長度選擇視窗



管道長度·高度差輸入(多聯系統) (4/5)

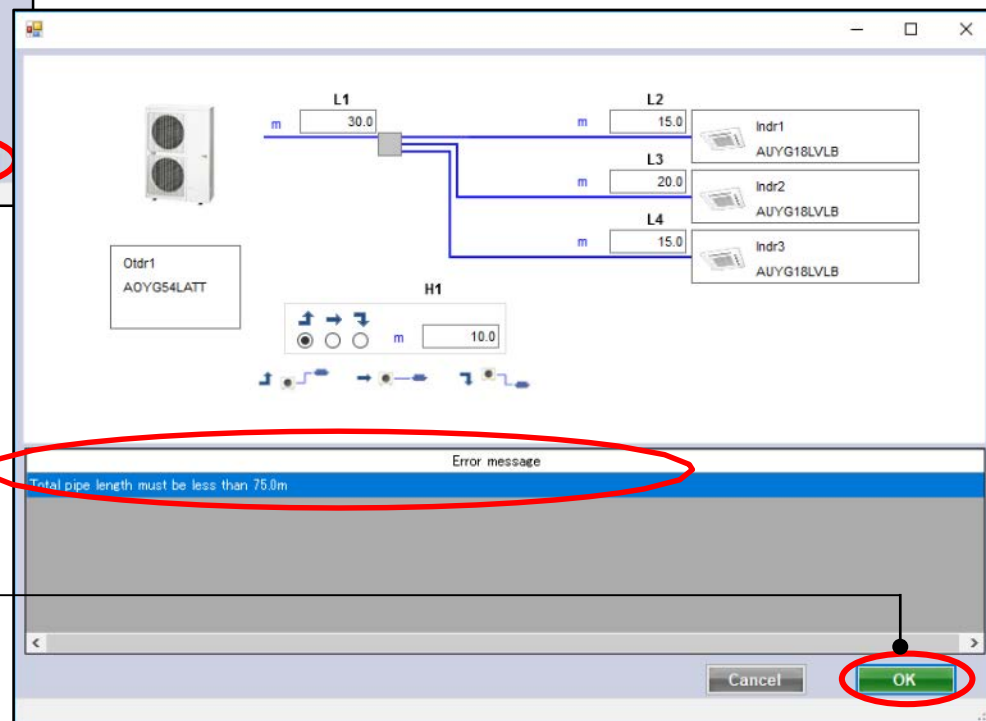


輸入管道長度

所有長度都被註冊後，請選擇“OK”

當信息未輸入或超出限制時，警告提供錯誤信息。


重複，然後選擇“OK”



管道長度·高度差輸入(多聯系統) (5/5)

Modify outdoor unit

Outdoor



m 30.0

9.52x15.88

UTP-SX354

Name: Otdr1

Comments:

Refrigerant: R410A

Type: Simultaneous multi 3 phase Triple type

Model: AOYG54LATT

PS: 3N, 400V, 50Hz

Outdoor dry bulb temperature

Cooling: C 35.0

Heating: C 7.0

Indoor temperature

Cooling DBT: C 27.0

RH %: 43.4

Heating DBT: C 20.0

Actual capacity

Cooling: kW

Heating: kW

Pipe size change

9.52(3/8)x15.88(5/8)**

Input pipe length

Pipe length & Height difference relative to outdoor unit

Name	Comments	Model
Indr1	15.0 6.35x12.70	AUYG18LVLB
Indr2	15.0 6.35x12.70	AUYG18LVLB
Indr3	15.0 6.35x12.70	AUYG18LVLB

Actual capacity

Operation

HC - kW

TC - kW

SC - kW

HC - kW

Operation

TC - kW

SC - kW

HC - kW

Operation

TC - kW

SC - kW

HC - kW

輸入管道長度已設置

顯示總管道長度和額外的冷媒

Total pipe length: 75.0 m (Max.75.0 m)

Additional refrigerant: 1.35 kg (Max.2.25 kg)

Check capacity

Cancel

OK

室內·室外選擇方法

Modify outdoor unit

Outdoor

Pipe length & Height difference relative to outdoor unit

Name: Indr1, Comments: , Type: Room setting, Model: ASYG07LMCA, Capacity: 2.00 kW Class

Name: Indr2, Comments: , Type: Room setting, Model: ASYG07LMCA, Capacity: 2.00 kW Class

Name: Indr3, Comments: , Type: Room setting, Model: ASYG07LMCA, Capacity: 2.00 kW Class

Name: Indr4, Comments: , Type: Room setting, Model: ASYG07LMCA, Capacity: 2.00 kW Class

Refrigerant: R410A

Type: 4 Rooms Multi System

Model: AOYG30LAT4

PS: 1p, 230V, 50Hz

Outdoor dry bulb temperature

Cooling: C, 35.0

Heating: C, 7.0

Indoor temperature

Cooling: C, 27.0

DBT: RH %, 43.4

Heating: DBT, C, 20.0

Actual capacity

Cooling: 7.50 kW

Heating: 8.80 kW

Total pipe length: 20.0 m (Max 70.0 m)

Additional refrigerant: 0.00 kg (Max 0.50 kg)

Check capacity

Cancel OK

選擇 “OK”

室外機和室內機產品資訊和圖像顯示。

Indoor unit

File Preference Tool Help Update

Outdoor unit Piping Wiring Report Menu

Outdoor unit data

Name: Otdr1

Comments: , Refrigerant: R410A

Model: 4 Rooms Multi System

Model: AOYG30LAT4

PS: 1p, 230V, 50Hz

Capacity

	Cooling	Heating
Capacity	8.00 kW	9.60 kW

Indoor connect count: 4

Outdoor temp. Cooling: 35.0C, Heating: 7.0C

Indoor temperat Cooling: 27.0C, Heating: 20.0C

Piping

Total pipe length: 20.0m

District: Europe

Actual capacity

Cooling / Heating

Otdr1 AOYG30LAT4

Indr1 ASYG07LMCA

Indr2 ASYG07LMCA

Indr3 ASYG07LMCA

Indr4 ASYG07LMCA

Check capacity

房間設置功能(1/3)

選擇“房間設置功能”

打開房間設置功能視窗

選擇“樓層設定”

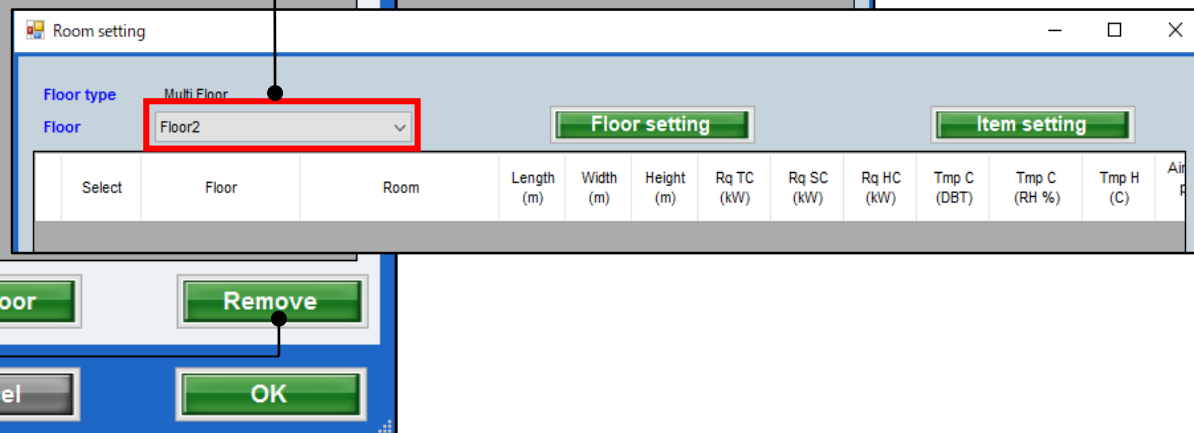
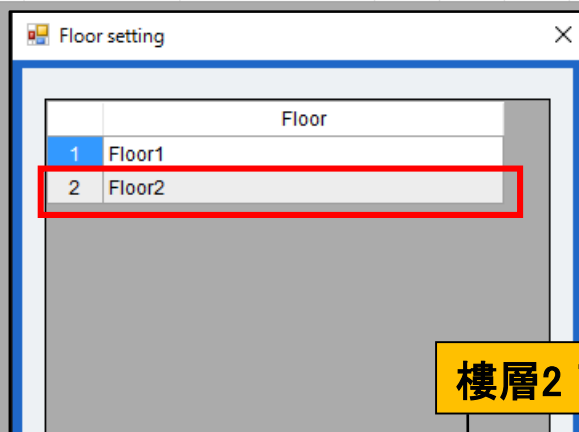
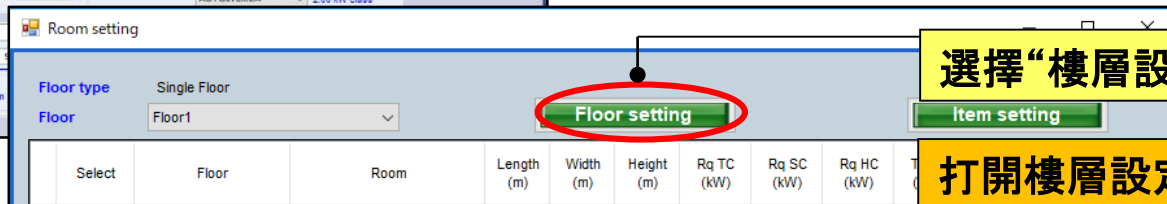
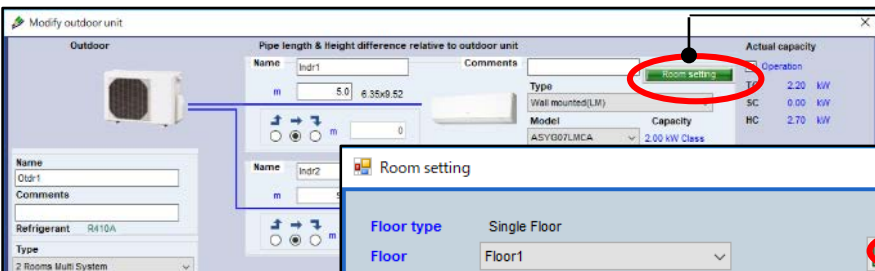
打開樓層設定視窗

新增或移除樓層

樓層2 可以被增加

新增樓層

移除樓層



房間設置功能(2/3)

“項目設置”

打開項目設置視窗

顯示的項目可以設置

檢查想要顯示的項目

顯示選中的項目

顯示的項目

顯示的項目單位

只有單位可以改變空間/人

11-18可以由用戶任意設定

Room setting

Floor type: Single Floor

Floor: Floor1

Floor setting

Item setting

Item	Unit	Use
1 Length	m	<input checked="" type="checkbox"/>
2 Width	m	<input checked="" type="checkbox"/>
3 Height	m	<input checked="" type="checkbox"/>
4 Rq TC	kW	<input checked="" type="checkbox"/>
5 Rq SC	kW	<input checked="" type="checkbox"/>
6 Rq HC	kW	<input checked="" type="checkbox"/>
7 Tmp C	DBT/RH %	<input checked="" type="checkbox"/>
8 Tmp C	DBT/RH %	<input checked="" type="checkbox"/>
9 Tmp H	C	<input checked="" type="checkbox"/>
10 Air space / person	m3	<input checked="" type="checkbox"/>
11 person	person	<input checked="" type="checkbox"/>
12 Remarks2		<input type="checkbox"/>
13 Remark		<input type="checkbox"/>
14 Remark		<input type="checkbox"/>
15 Remark		<input type="checkbox"/>
16 Remark		<input type="checkbox"/>
17 Remark		<input type="checkbox"/>
18 Remark		<input type="checkbox"/>

Item 10-18:

Room setting

Floor type: Multi Floor

Floor: Floor2

Floor setting

Item setting

Select	Floor	Room	Length (m)	Width (m)	Height (m)	Rq TC (kW)	Rq SC (kW)	Rq HC (kW)	Tmp C (DBT)	Tmp C (RH %)	Tmp H (C)	Air F
1	Floor2	2F_Conference1	20.0	20.0	8.0	20	10	30	27	43.4	20	

房間設置功能(3/3)

選擇“新增房間”

新增房間

將室內機設置在房間

選擇樓層2

新增房間至樓層

從樓層移除房間

Add room

Remove

新增樓層至房間2

將每個值設置為“房間”

檢查並設置室內機到房間

Room setting

Floor type: Multi Floor

Floor: Floor2

Item setting

Select	Floor	Room	Length (m)	Width (m)	Height (m)	Rq TC (kW)	Rq SC (kW)	Rq HC (kW)	Tmp C (DBT)	Tmp C (RH %)	Tmp H (C)	Air
1	Floor2	Room1							27	43.4	20	

Room setting

Floor type: Multi Floor

Floor: Floor2

Floor setting

Item setting

Select	Floor	Room	Length (m)	Width (m)	Height (m)	Rq TC (kW)	Rq SC (kW)	Rq HC (kW)	Tmp C (DBT)	Tmp C (RH %)	Tmp H (C)	Air
1	Floor2	2F_Conference1	20.0	20.0	8.0	20	10	30	27	43.4	20	