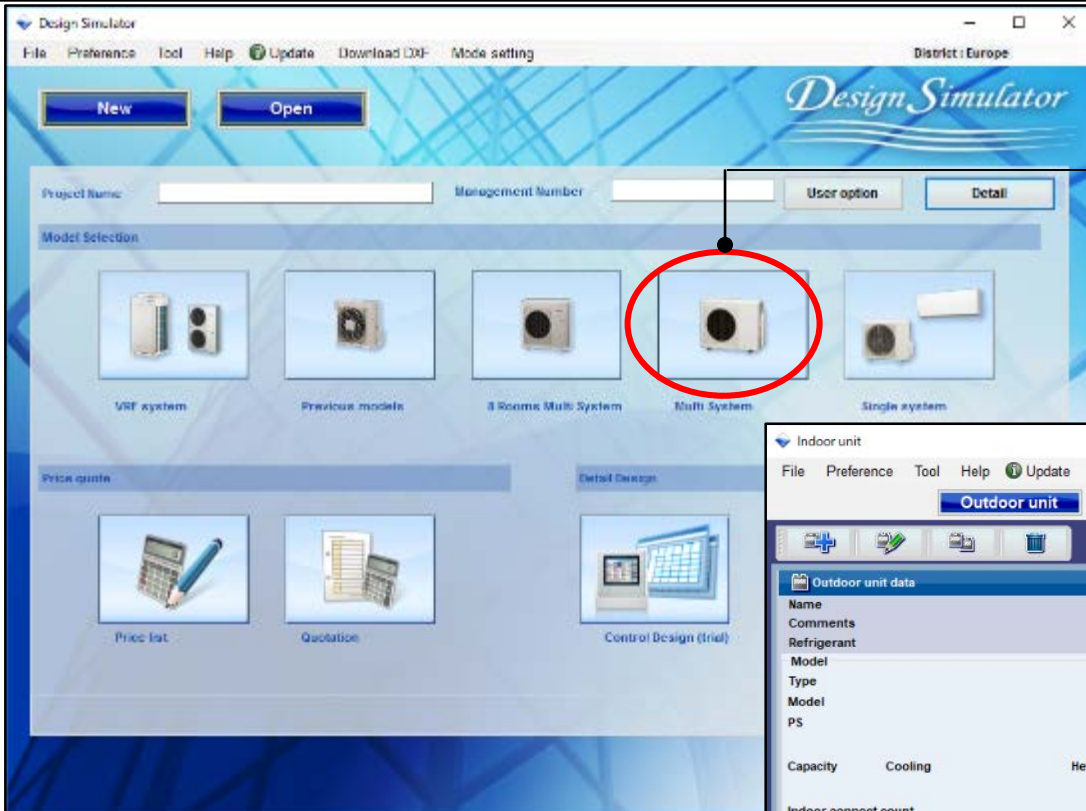
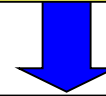


# Initial settings

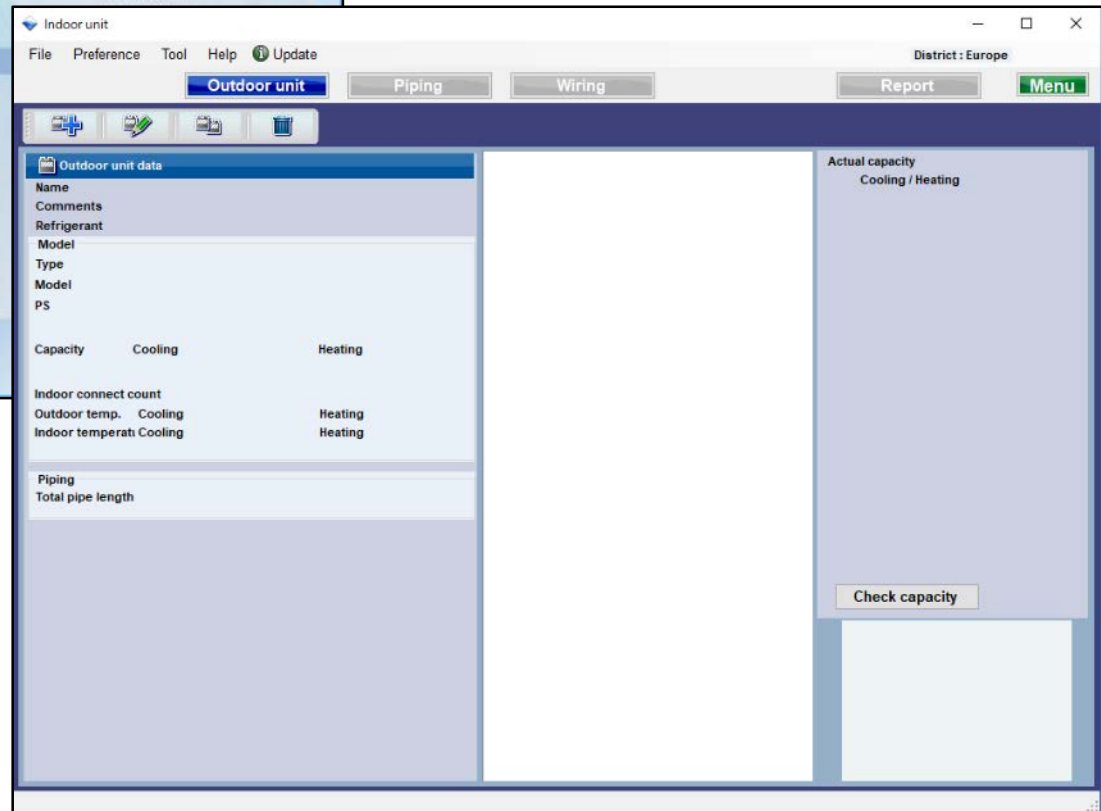
## Design Simulator



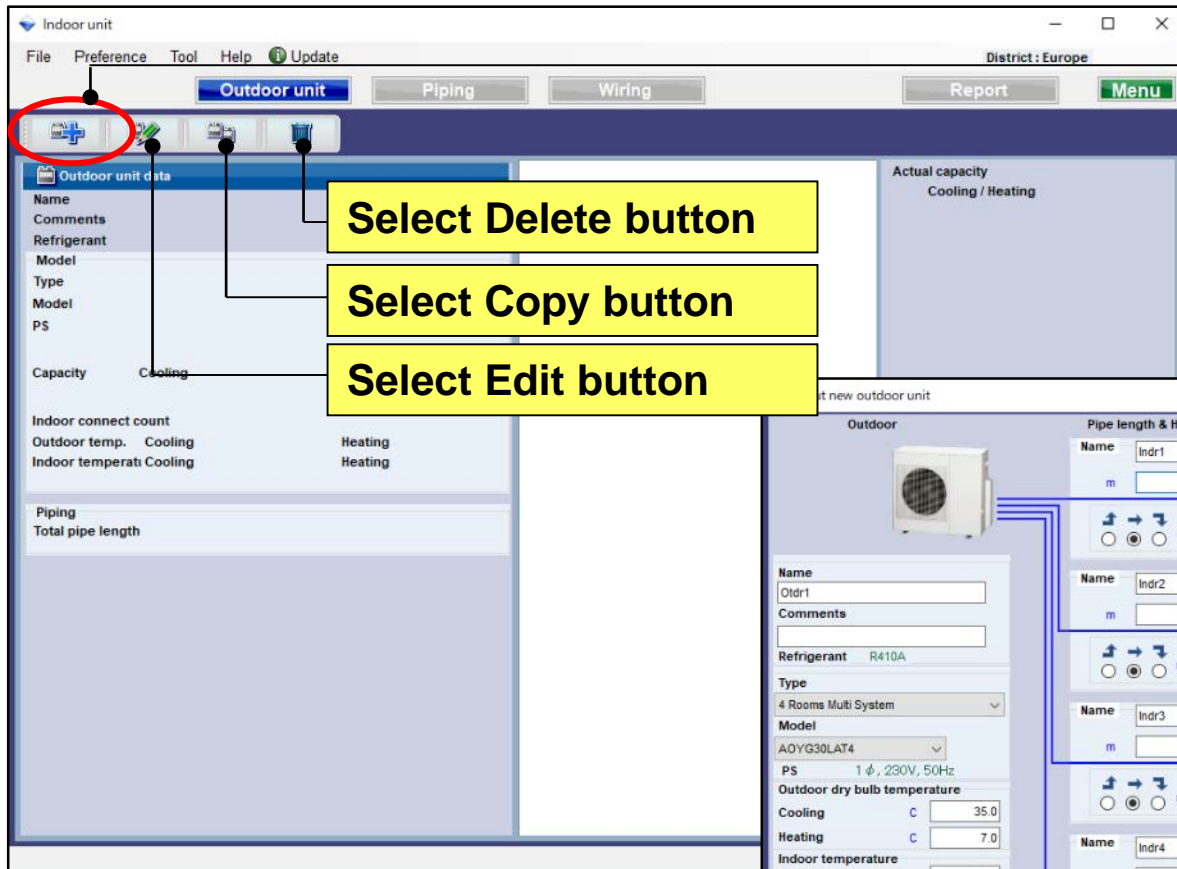
Select "Multi System"



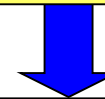
Indoor unit settings initial screen



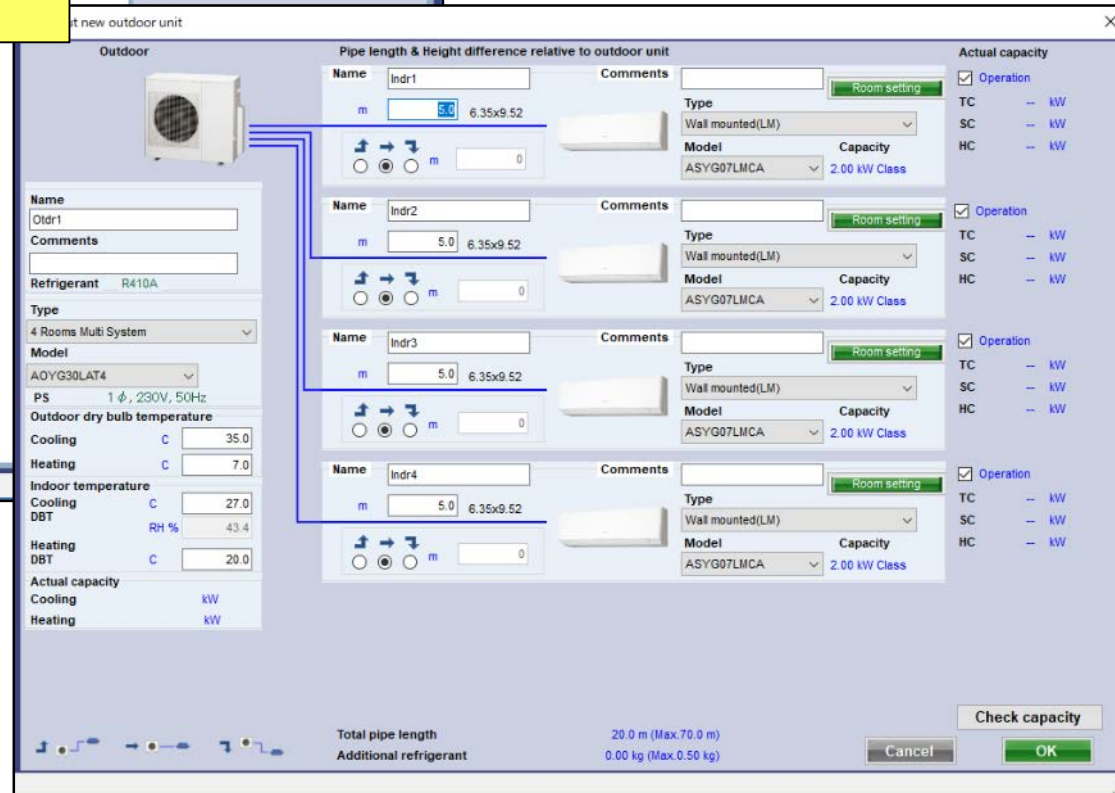
## Indoor · Outdoor setting method (1/4)



Select “add new indoor unit”



Open Input new outdoor unit initial registration screen



## Indoor · Outdoor setting method (2/4)

Calculate capacity by the checked indoor unit

Modify outdoor unit

Outdoor

Pipe length & Height difference relative to outdoor unit

Name: Indr1

Comments:

Type: Wall mounted(LM)

Model: ASYG07LMCA

Capacity: 2.00 kW Class

Room setting

Refrigerant: R410A

Type: 4 Rooms Multi System

Model: AOYG30LAT4

PS: 1 φ, 230V, 50Hz

Outdoor dry bulb temperature

Cooling: 35.0

Heating: 7.0

Indoor temperature

Cooling DBT: 27.0

Heating DBT: 20.0

Actual capacity

Cooling: 7.50 kW

Heating: 8.80 kW

Total pipe length: 20.0 m (Max.70.0 m)

Additional refrigerant: 0.00 kg (Max.0.50 kg)

Cancel

OK

Check capacity

Preference input name display

Select type

Select outdoor model

Input design conditions.  
If you don't decide design conditions,  
input it under the ratings condition of  
cooling "27C" and heating "20C".

Calculate Actual capacity  
and display

Actual capacity

Operation

TC: 2.50 kW

SC: 1.81 kW

HC: 2.93 kW

Operation

TC: 2.50 kW

SC: 1.81 kW

HC: 2.93 kW

Operation

TC: -- kW

SC: -- kW

HC: -- kW

Operation

TC: 2.50 kW

SC: 1.81 kW

HC: 2.93 kW

## Indoor · Outdoor setting method (3/4)

Preference input name display

Room Setting

Select type of Indoor unit

Select indoor model

Input the value of "Actual piping Length" and "Height difference".  
Select position of outdoor unit relative to indoor unit.

Modify outdoor unit

Outdoor

Pipe length & Height difference relative to outdoor unit

Name Indr1 Comments

m 5.0 6.35x9.52

Type Wall mounted(LM)

Model ASYG07LMCA Capacity 2.00 kW Class

Room setting

Operation

Actual capacity

TC 2.50 kW

SC 1.81 kW

HC 2.93 kW

Name Indr2 Comments

m 5.0 6.35x9.52

Type Wall mounted(LM)

Model ASYG07LMCA Capacity 2.00 kW Class

Room setting

Operation

Actual capacity

TC 2.50 kW

SC 1.81 kW

HC 2.93 kW

Name Indr3 Comments

m 5.0 6.35x9.52

Type Wall mounted(LM)

Model ASYG07LMCA Capacity 2.00 kW Class

Room setting

Operation

Actual capacity

TC 2.50 kW

SC 1.81 kW

HC 2.93 kW

Name Indr4 Comments

m 5.0 6.35x9.52

Type Wall mounted(LM)

Model ASYG07LMCA Capacity 2.00 kW Class

Room setting

Operation

Actual capacity

TC 2.50 kW

SC 1.81 kW

HC 2.93 kW

Name Otdr1 Comments

Refrigerant R410A

Type 4 Rooms Multi System

Model AOYG30LAT4

PS 1 φ, 230V, 50Hz

Outdoor dry bulb temperature

Cooling C 35.0

Heating C 7.0

Indoor temperature

Cooling C 27.0

DBT RH % 43.4

Heating DBT C 20.0

Actual capacity

Cooling 7.50 kW

Heating 8.80 kW

Total pipe length 20.0 m (Max.70.0 m)

Additional refrigerant 0.00 kg (Max.0.50 kg)


Check capacity

Cancel OK

## Multi system

Input new outdoor unit

Outdoor



Name: Otdr1  
Comments:  
Refrigerant: R410A  
Type: 4 Rooms Multi System  
Model:

Pipe length & Height difference relative to outdoor unit

Name	Comments	Type	Model	Capacity
Indr1		Wall mounted(LM)	ASYG07LMCA	2.00 kW Class
Indr2		Wall mounted(LM)	ASYG07LMCA	2.00 kW Class
Indr3		Wall mounted(LM)	ASYG07LMCA	2.00 kW Class

Actual capacity

Operation	TC	SC	HC
<input checked="" type="checkbox"/>	-- kW	-- kW	-- kW
<input checked="" type="checkbox"/>	-- kW	-- kW	-- kW
<input checked="" type="checkbox"/>	-- kW	-- kW	-- kW

### Pipe length · Height difference input (Multi system)


Select type of outdoor unit and outdoor model

Select type of Indoor unit and indoor model

Input the pipe length

Modify outdoor unit

Outdoor



Pipe length & Height difference relative to outdoor unit

Name	Indr1	Indr2	Indr3	Indr4
Type	Wall mounted(LM)	Wall mounted(LM)	Wall mounted(LM)	Wall mounted(LM)
Model	ASYG07LMCA	ASYG07LMCA	ASYG07LMCA	ASYG07LMCA
Capacity	2.00 kW Class	2.00 kW Class	2.00 kW Class	2.00 kW Class

Room setting

Actual capacity

Operation	TC	SC	HC
✓	2.50 kW	1.81 kW	2.93 kW
✓	2.50 kW	1.81 kW	2.93 kW
✓	2.50 kW	1.81 kW	2.93 kW
✓	2.50 kW	1.81 kW	2.93 kW

Name: Oldr1

Comments:

Refrigerant: R410A

Type: 4 Rooms Multi System

Model: AOYG30LAT4

PS: 1 φ, 230V, 50Hz

Outdoor dry bulb temperature

Cooling: C 35.0

Heating: C 7.0

Indoor temperature

Cooling: C 27.0

DBT: RH % 43.4

Heating: C 20.0

Actual capacity

Cooling: 7.50 kW

Heating: 8.80 kW

Total pipe length: 20.0 m (Max.70.0 m)

Additional refrigerant: 0.00 kg (Max.0.50 kg)

Check capacity

Cancel OK

## Simultaneous multi system

Input new outdoor unit

Outdoor

9.52x15.88 UTP-SX354

1.0 m

Pipe length & Height difference relative to outdoor unit

Name	Comments	Type	Model	Room setting
Indr1		Compact Cassette(3Phase Triple)	AUYG18LVLB	<input type="checkbox"/>
Indr2		Compact Cassette(3Phase Triple)	AUYG18LVLB	<input type="checkbox"/>
Indr3				<input type="checkbox"/>

Actual capacity

Operation	TC	SC	HC
<input checked="" type="checkbox"/>	-- kW	-- kW	-- kW

Name: Otdr1

Comments:

Refrigerant: R410A

Type: Simultaneous multi 3 phase Triple type

Model:



## Pipe length · Height difference input (Simultaneous multi system) (1/5)

**Outdoor**

UTP-SX354

**Name**  
Otdr1

**Comments**

**Refrigerant** R410A

**Type**  
Simultaneous multi 3 phase Triple type

**Model**  
AOYG54LATT

**PS** 3N, 400V, 50Hz

**Outdoor dry bulb temperature**

**Cooling** C 35.0

**Heating** C 7.0

**Indoor temperature**

**Cooling** C 27.0

**DBT** RH % 43.4

**Heating** C 20.0

**Actual capacity**

**Cooling** kW

**Heating** kW

**Pipe size change**  
9.52(3/8)x15.88(5/8)\*\*

**Input pipe length**

**Pipe length & Height difference relative to outdoor unit**

**Name** Indr1

**Comments**

**Type**  
Compact Cassette(3Phase Triple)

**Model**  
AUYG18LVLB

**Room setting**

**Name** Indr2

**Comments**

**Type**  
Compact Cassette(3Phase Triple)

**Model**  
AUYG18LVLB

**Room setting**

**Name** Indr3

**Comments**

**Type**  
Compact Cassette(3Phase Triple)

**Model**  
AUYG18LVLB

**Room setting**

**Actual capacity**

☒ **Operation**

**TC** -- kW

**SC** -- kW

**HC** -- kW

☒ **Operation**

**TC** -- kW

**SC** -- kW

**HC** -- kW

☒ **Operation**

**TC** -- kW

**SC** -- kW

**HC** -- kW

**Check capacity**

**Cancel** **OK**

**Select type (Simultaneous multi)**

**Change pipe size**

**Input pipe length**

**Additional refrigerant** 0.00 kg (Max.2.25 kg)



### Pipe length · Height difference input (Simultaneous multi system) (2/5)

**Select type of outdoor unit and outdoor model**

**Select type of Indoor unit and indoor model**

**Set pipe size**

**Input the pipe length**

**Pipe length and Height difference of Simultaneous multi are input by Input pipe length button**

**Check capacity**

**Cancel** **OK**

### Pipe length • Height difference input (Simultaneous multi system) (3/5)

**Select "Input pipe length"**

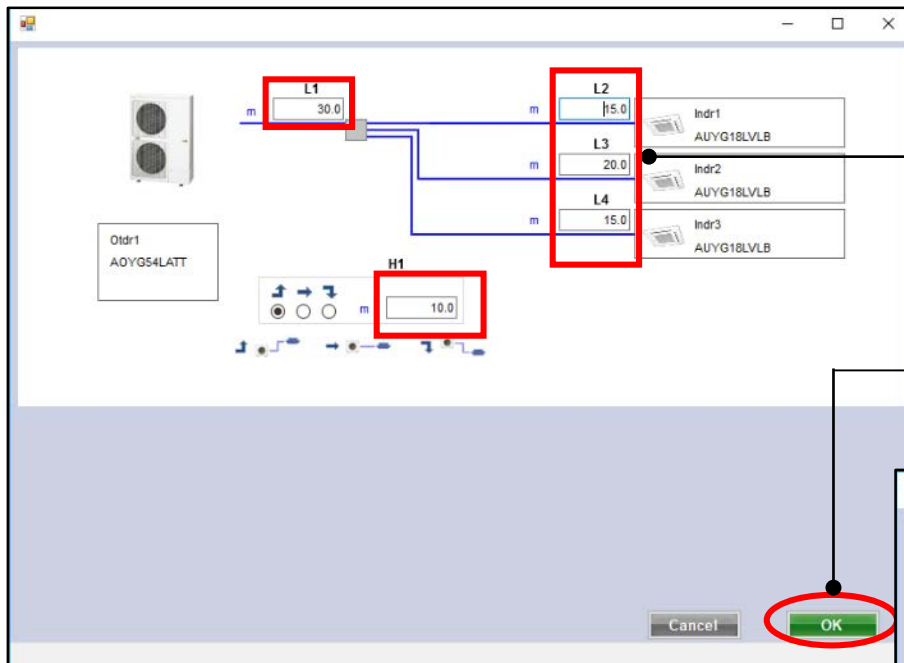
**Open Input pipe length selection screen**

The screenshot shows the 'Input new outdoor unit' dialog box. The 'Outdoor' section displays the outdoor unit 'UTP-SX354'. The 'Indoor' section shows three indoor units: 'Indr1', 'Indr2', and 'Indr3'. The 'Pipe length & Height difference relative to outdoor unit' section is active, showing the following data:

Name	Height difference (m)	Pipe length (m)
Indr1	5.0	6.35x12.70
Indr2	5.0	6.35x12.70
Indr3	5.0	6.35x12.70

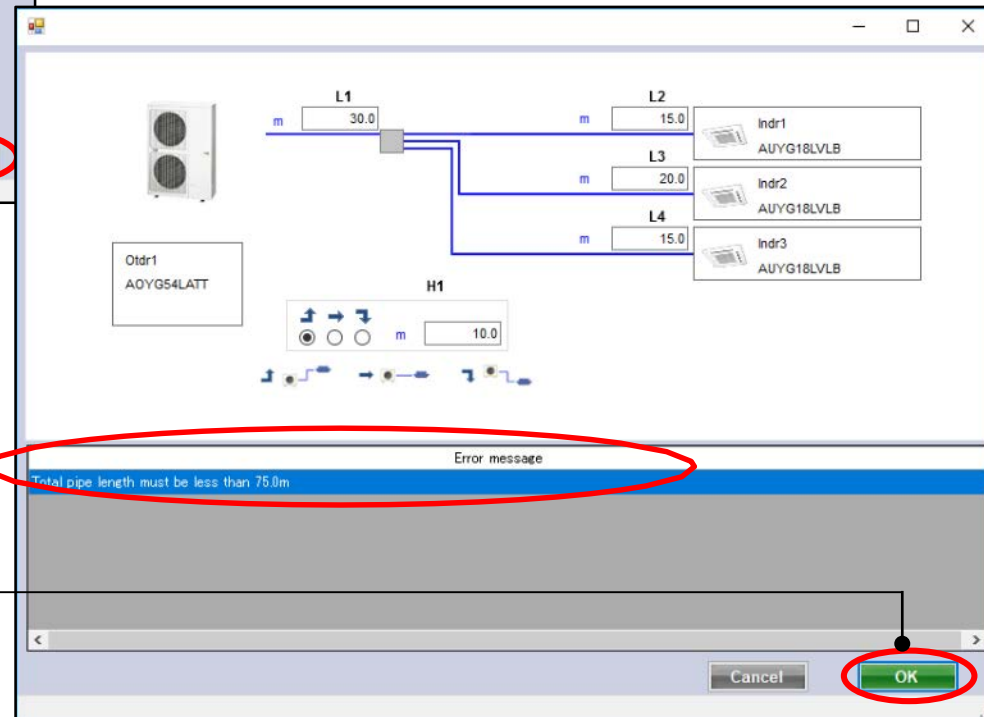
The 'Input pipe length' button is highlighted with a red circle. The 'Total pipe length' is 15.88m, and the 'Additional refrigerant' is 9.52(3/8)x15.88(5/8)''.

### Pipe length • Height difference input (Simultaneous multi system) (4/5)



A warning provides error information when information has not been entered or exceeds the restrictions.

Repeat again , then select "OK"



## Pipe length · Height difference input (Simultaneous multi system) (5/5)

Modify outdoor unit

Outdoor

30.0 m

9.52x15.88 UTP-SX354

Name: Otdr1  
Comments:  
Refrigerant: R410A  
Type: Simultaneous multi 3 phase Triple type  
Model: AOYG54LATT  
PS: 3N, 400V, 50Hz  
Outdoor dry bulb temperature:  
Cooling: 35.0 C  
Heating: 7.0 C  
Indoor temperature:  
Cooling DBT: 27.0 C  
RH %: 43.4  
Heating DBT: 20.0 C  
Actual capacity:  
Cooling: kW  
Heating: kW  
Pipe size change: 9.52(3/8)x15.88(5/8)\*\*  
Input pipe length

Pipe length & Height difference relative to outdoor unit

Name	Comments	Model	Type	Operation
Indr1		AUYG18LVLB	Compact Cassette(3Phase Triple)	HC
Indr2		AUYG18LVLB	Compact Cassette(3Phase Triple)	TC, SC, HC
Indr3		AUYG18LVLB	Compact Cassette(3Phase Triple)	TC, SC, HC

Room setting

Total pipe length: 75.0 m (Max.75.0 m)  
Additional refrigerant: 1.35 kg (Max.2.25 kg)  
Check capacity  
Cancel OK

Input pipe length is set

Total pipe length and Additional refrigerant amount are displayed

## Indoor · Outdoor selection method (4/4)

Modify outdoor unit

Outdoor

Indr1

Indr2

Indr3

Indr4

Actual capacity

Operation

TC 2.50 kW

SC 1.81 kW

HC 2.93 kW

Check capacity

Cancel

OK

Total pipe length 20.0 m (Max 70.0 m)

Additional refrigerant 0.00 kg (Max 0.50 kg)

Select "OK"

Outdoor unit and indoor unit product information and image display.

Indoor unit

File Preference Tool Help Update

Outdoor unit Piping Wiring

Report Menu

District: Europe

Outdoor unit data

Name Otdr1

Comments

Refrigerant R410A

Model AOYG30LAT4

Type 4 Rooms Multi System

Model AOYG30LAT4

PS 1p, 230V, 50Hz

Capacity Cooling 8.00 kW Heating 9.60 kW

Indoor connect count 4

Outdoor temp. Cooling 35.0C Heating 7.0C

Indoor temperat Cooling 27.0C Heating 20.0C

Piping

Total pipe length 20.0m

Actual capacity

Cooling / Heating

Otdr1 AOYG30LAT4

Indr1 ASYG07LMCA

Indr2 ASYG07LMCA

Indr3 ASYG07LMCA

Indr4 ASYG07LMCA

TC -- kW

SC -- kW

HC -- kW

Check capacity

### Room setting function (1/3)

Select "Room setting"

Open Room setting screen

Select "Floor setting"

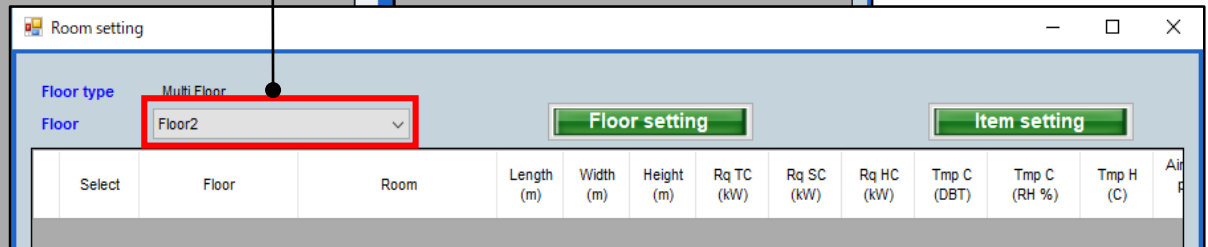
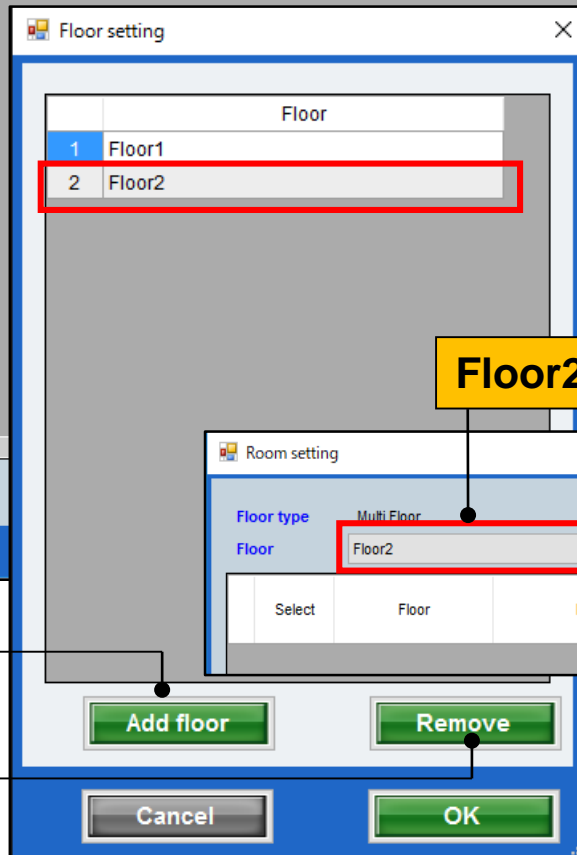
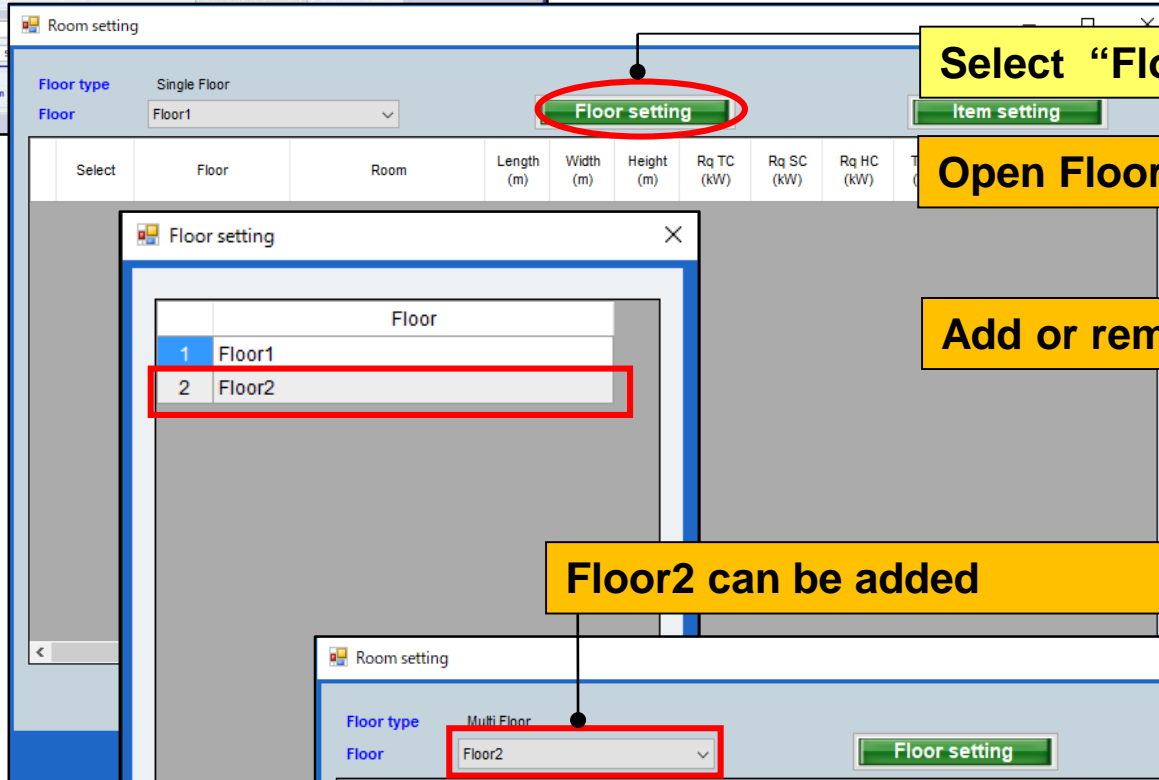
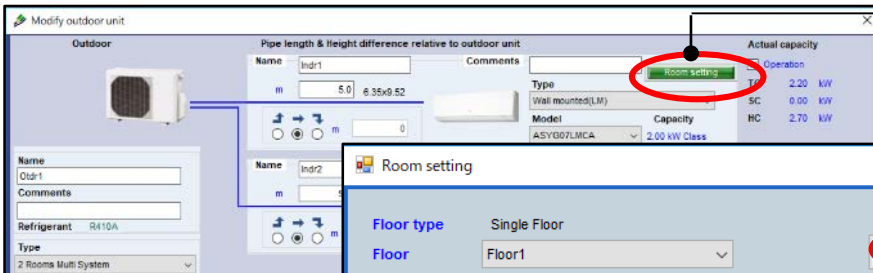
Open Floor setting screen

Add or remove Floor

Floor2 can be added

Add Floor

Remove Floor





## Room setting function (2/3)

Select "Item setting"

Open Item setting screen

Displayed item can be set

Check the items you want to display

Checked items are displayed

Displayed item unit

Displayed item

Only Unit can be changed for Air Space/person

11-18 can be set by user arbitrarily

	Item	Unit	Use
1	Length	m	<input checked="" type="checkbox"/>
2	Width	m	<input checked="" type="checkbox"/>
3	Height	m	<input checked="" type="checkbox"/>
4	Rq TC	kW	<input checked="" type="checkbox"/>
5	Rq SC	kW	<input checked="" type="checkbox"/>
6	Rq HC	kW	<input checked="" type="checkbox"/>
7	Tmp C	DBT/RH %	<input checked="" type="checkbox"/>
8	Tmp C	DBT/RH %	<input checked="" type="checkbox"/>
9	Tmp H	C	<input checked="" type="checkbox"/>
10	Air space / person	m3	<input checked="" type="checkbox"/>
11	person	person	<input checked="" type="checkbox"/>
12	Remarks2		<input type="checkbox"/>
13	Remark		
14	Remark		
15	Remark		
16	Remark		
17	Remark		
18	Remark		

Room setting

Floor typeMulti Floor

FloorFloor2

Floor setting

Item setting

Select	Floor	Room	Length (m)	Width (m)	Height (m)	Rq TC (kW)	Rq SC (kW)	Rq HC (kW)	Tmp C (DBT)	Tmp C (RH %)	Tmp H (C)	Air P
1	<input type="checkbox"/>	Floor2	2F_Conference1	20.0	20.0	8.0	20	10	30	27	43.4	20



### Room setting function (3/3)

Select "Add room"

Add Room

Set indoor unit to Room

Select Floor2

Add Room to Floor

Remove Room from Floor

Add Room to Floor2

Set each value to Room

Check and set indoor unit to Room

