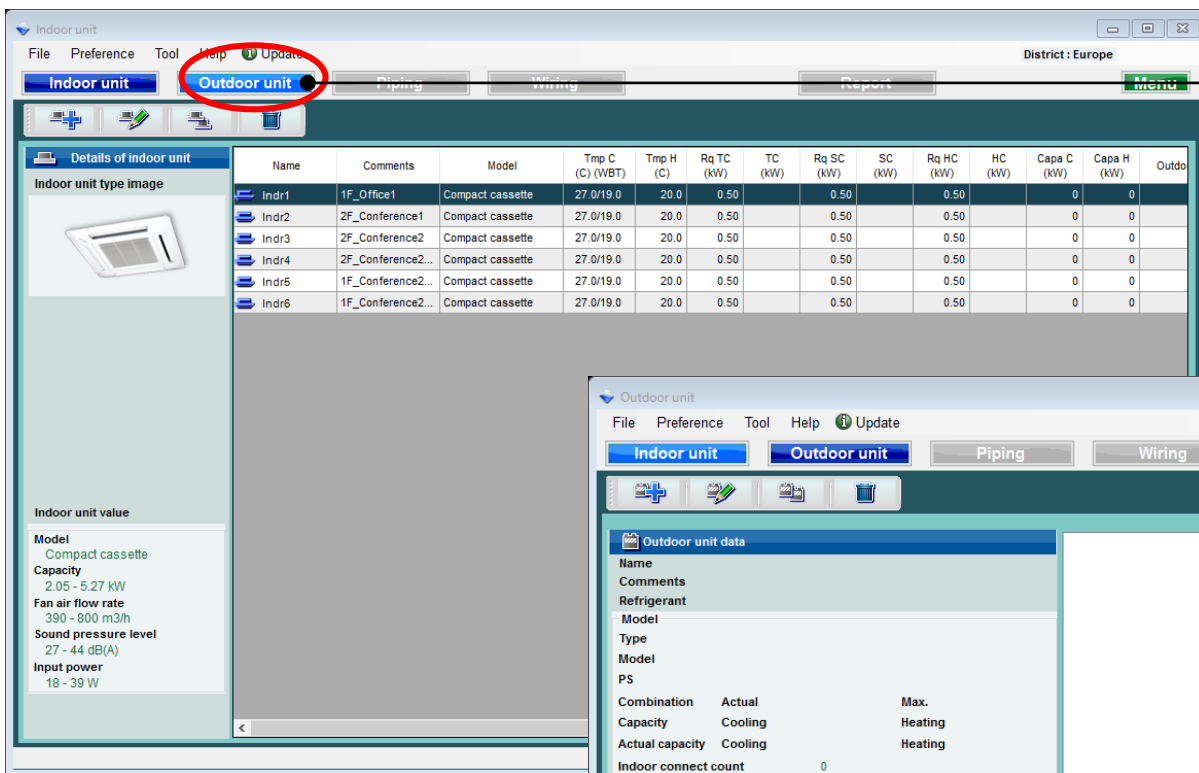


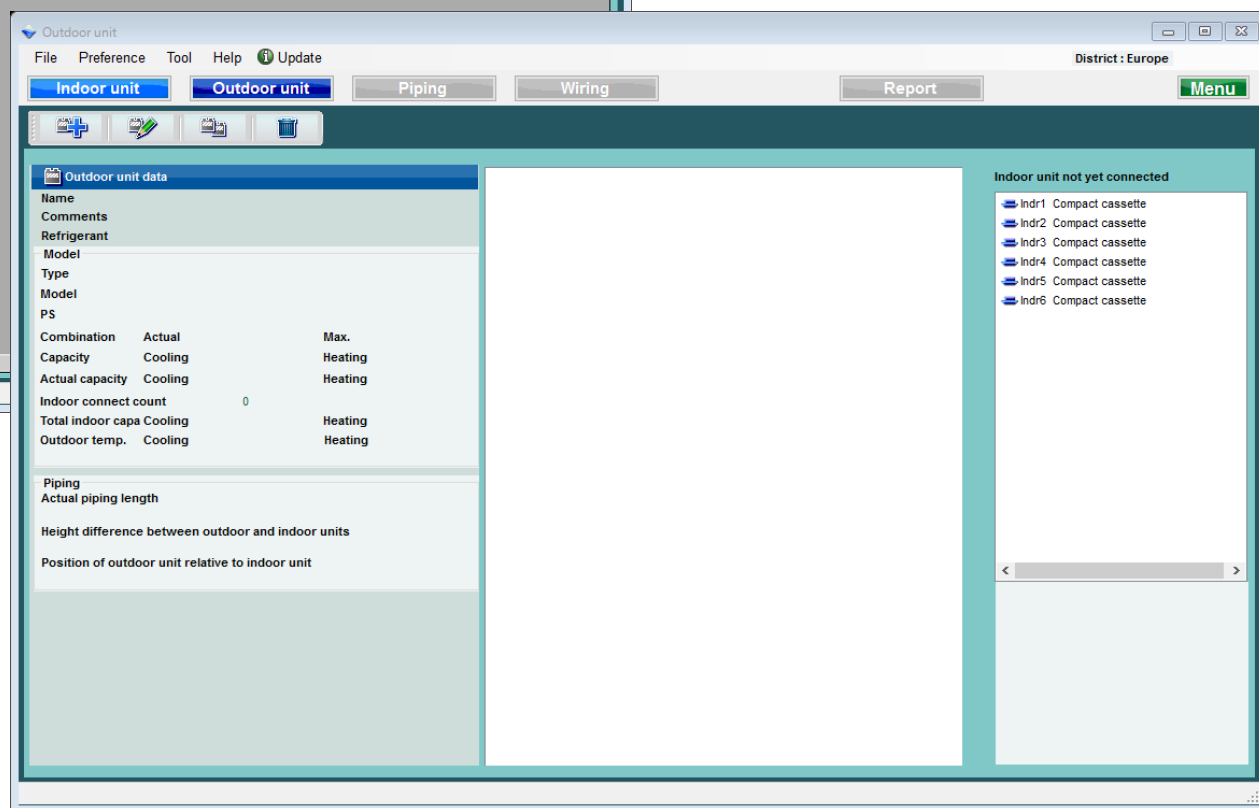
室外機設定

選機軟體



選擇“室外機”

打開室外機初始註冊視窗



室外機(1/4)

選擇“新增室外機”

輸入新的室外機

選擇刪除室內機

選擇複製室內機

選擇修改室內機

Input new outdoor unit

Name: Otdr1

Comments:

Refrigerant: R410A

Model:

Type: 8 Rooms Multi System

Model: ☐ Manual selection

PS: ---

Combination: 100%

Outdoor dry bulb temperature

Cooling: C 35 Heating: C 7

Actual capacity

Cooling: kW Heating: kW

Piping

Actual piping length: m 7.5

Position of outdoor unit relative to indoor unit

☐ Higher ☒ Same Floor ☐ Lower

Height difference between outdoor and indoor units: m 0.0

Indoor unit not yet connected

- Indr1 Compact cassette
- Indr2 Compact cassette
- Indr3 Compact cassette
- Indr4 Compact cassette
- Indr5 Compact cassette
- Indr6 Compact cassette

Cancel OK

室外機(2/4)

+

Input new outdoor unit

Name

Otdr1

Comments

Refrigerant

R410A

Model

Type

8 Rooms Multi System

Model

☐ Manual selection

PS

Combination

100%

Outdoor dry bulb temperature

Cooling

C

35

Heating

C

7

Actual capacity

Cooling

kW

Heating

kW

Piping

Actual piping length

m

7.5

Position of outdoor unit relative to indoor unit

☐ Higher
 ☒ Same Floor
 ☐ Lower

Height difference between outdoor and indoor units

m

0.0

優先輸入名稱顯示

輸入註釋. (只能輸入十個字)
可以自由寫入. (Ex. : Roof top, 1F)

選擇室外機的類型

選擇室外機型號

選擇連接限制.如果超過連接限制,
室外機將自動轉換為上述型號.

輸入室外機的設計條件。
如果不決定設計條件, 則在冷卻“35C”和加熱“7C”的額定條件下
輸入。

輸入“實際管道長度”和“高差”的值。
選擇室內機相對於室內機的位置(※1)

Cancel

OK

(※1) The loss coefficient is automatically calculated.

室外機(3/4)

Input new outdoor unit

Name: Otdr1

Comments:

Refrigerant: R410A

Model:

Type: 8 Rooms Multi System

Model: ☐ Manual selection

PS: ---

Combination: 100%

Outdoor dry bulb temperature

Cooling: C 35 Heating: C 7

Actual capacity

Cooling: kW Heating: kW

Piping

Actual piping length: m 7.5

Position of outdoor unit relative to indoor unit

☐ Higher ☒ Same Floor ☐ Lower

Height difference between outdoor and indoor units: m 0.0

Indoor unit not yet connected

- In dr1 Compact cassette
- In dr2 Compact cassette
- In dr3 Compact cassette
- In dr4 Compact cassette
- In dr5 Compact cassette
- In dr6 Compact cassette

紅色標記表示外部設計條件。

使用室內機註冊畫面設置室內機組。(拖放)

Input new outdoor unit

Name: Otdr1

Comments:

Refrigerant: R410A

Model:

Type: 8 Rooms Multi System

Model: ☐ Manual selection
AOYG45LBT8

PS: 1 ϕ , 230V, 50Hz

Combination: 100%

Outdoor dry bulb temperature

Cooling: C 35 Heating: C

Actual capacity

Cooling: 12.30 kW Heating: 14.22 kW

Piping

Actual piping length: m 7.5

Position of outdoor unit relative to indoor unit

☐ Higher ☒ Same Floor ☐ Lower

Height difference between outdoor and indoor units: m 0.0

Indoor unit not yet connected

- In dr1 AOYG07LVLA 87.9%
- In dr2 AOYG07LVLA
- In dr3 AOYG07LVLA
- In dr4 AOYG07LVLA
- In dr5 AOYG07LVLA
- In dr6 AOYG07LVLA

Cancel OK

室外機和室內機的型號是自動選擇的。

室外機(4/4)

選擇“OK”

室外機和室內機 產品資訊圖像顯示。

Input new outdoor unit

Name: Otdr1

Comments:

Refrigerant: R410A

Model: 8 Rooms Multi System

Type: AUYG45LBT8

PS: 1 φ, 230V, 50Hz

Combination: 100%

Outdoor dry bulb temperature: Cooling: C 35 Heating: C 7

Actual capacity: Cooling: 12.30 kW Heating: 14.22 kW

Piping: Actual piping length: m 7.5

Position of outdoor unit relative to indoor unit: ☒ Same floor ☐ Higher ☐ Lower

Height difference between outdoor and indoor units: m 0.0

Indoor unit not yet connected

Cancel OK

Outdoor unit

File Preference Tool Help Update

Indoor unit Outdoor unit Piping Wiring Control Report Menu

District : Europe

Outdoor unit data

Name	Otdr1		
Comments			
Refrigerant	R410A		
Model	8 Rooms Multi System		
Type	AUYG45LBT8		
PS	1φ, 230V, 50Hz		
Combination	Actual	87.9%	Max. 100%
Capacity	Cooling	14.00 kW	Heating 16.00 kW
Actual capacity	Cooling	12.30 kW	Heating 14.22 kW
Indoor connect count	6		
Total indoor capa	Cooling	12.30 kW	Heating 14.22 kW
Outdoor temp.	Cooling	35.0C	Heating 7.0C
Piping			
Actual piping length	7.5m		
Height difference between outdoor and indoor units	0.0m		
Position of outdoor unit relative to indoor unit	Same Floor		

Indoor unit not yet connected

Product image of the outdoor unit.

室外機設定

選機軟體

室外機

選擇“室內機”

確認室內機詳細規格在視窗上.

