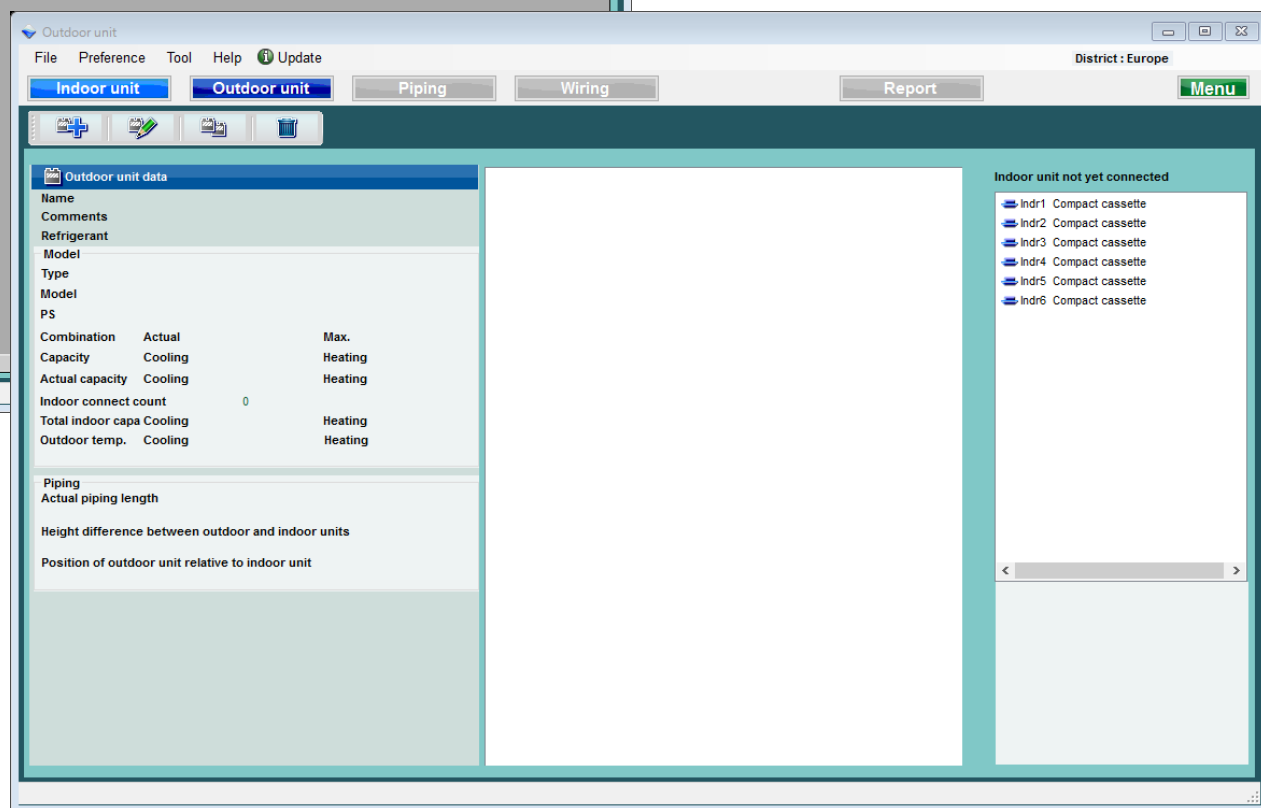


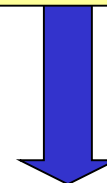
Изберете “Външно тяло”

Екран за първоначална регистрация на външно тяло



Външно тяло (1/4)

“Добави ново външно тяло”



Екран за добавяне на тяло

Изтрий вътрешно тяло

Копирай вътрешно тяло

Промени вътрешно тяло

Input new outdoor unit

Name: Otdr1
Comments:
Refrigerant: R410A
Model: 8 Rooms Multi System
Type:
Model: ☐ Manual selection
PS:
Combination: 100%
Outdoor dry bulb temperature
Cooling: C 35 Heating: C 7
Actual capacity
Cooling: kW Heating: kW
Piping
Actual piping length: m 7.5
Position of outdoor unit relative to indoor unit
☐ Higher ☒ Same Floor ☐ Lower
Height difference between outdoor and indoor units: m 0.0

Indoor unit not yet connected

- Indr1 Compact cassette
- Indr2 Compact cassette
- Indr3 Compact cassette
- Indr4 Compact cassette
- Indr5 Compact cassette
- Indr6 Compact cassette

Cancel OK

Външно тяло (2/4)

+

Input new outdoor unit

Name

Otdr1

Comments

Refrigerant

R410A

Model

Type

8 Rooms Multi System

Model

☐ Manual selection

PS

Combination

100%

Outdoor dry bulb temperature

Cooling

C

35

Heating

C

7

Actual capacity

Cooling

kW

Heating

kW

Piping

Actual piping length

m

7.5

Position of outdoor unit relative to indoor unit

☐ Higher ↑
 ☒ Same Floor →
 ☐ Lower ↓

Height difference between outdoor and indoor units

m

0.0

Въведете желаното име

Въведете коментар. (до 10 символа)
Свободен текст. (Пр.: Покрив, E1)

Изберете тип външно тяло

Изберете модел външно тяло

Изберете ограничение. Ако ограниченията са превишени, външното тяло автоматично се сменя с по-голям модел.

Въведете условия за външното тяло. Ако няма специфични условия, въведете под номиналните условия за охлаждане "35C" и отопление "7C".

Въведете стойност "Дължина на тръбите" и "Денивелация".
Въведете позиция на външното спрямо вътрешното тяло. (※1)

Cancel

OK

(※1) Коефициентът на загуба се изчислява автоматично.

Външно тяло (3/4)

Input new outdoor unit

Name: Otdr1

Comments:

Refrigerant: R410A

Model:

Type: 8 Rooms Multi System

Model: ☐ Manual selection

PS: ---

Combination: 100%

Outdoor dry bulb temperature

Cooling: C 35 Heating: C 7

Actual capacity

Cooling: kW Heating: kW

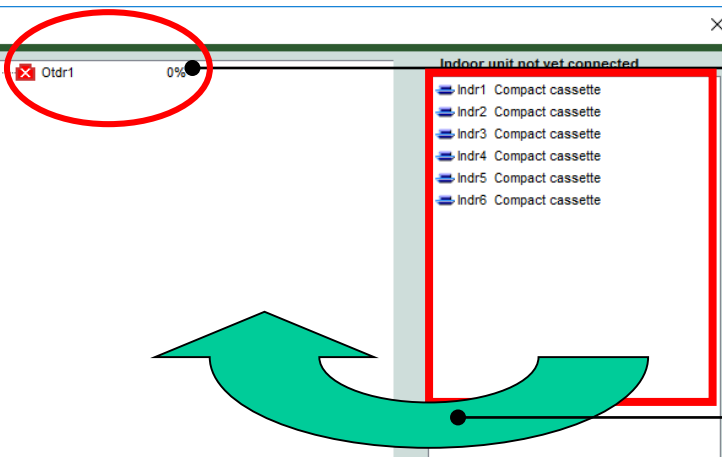
Piping

Actual piping length: m 7.5

Position of outdoor unit relative to indoor unit

☐ Higher ☒ Same Floor ☐ Lower

Height difference between outdoor and indoor units: m 0.0



Червен маркер показва извън допустимите граници.

Използвайте екрана за регистрацията на вътр.тяло за да го групирате. (Влачи&пусни)

Input new outdoor unit

Name: Otdr1

Comments:

Refrigerant: R410A

Model:

Type: 8 Rooms Multi System

Model: ☐ Manual selection

AOYG45LBT8

PS: 1 ϕ , 230V, 50Hz

Combination: 100%

Outdoor dry bulb temperature

Cooling: C 35 Heating: C

Actual capacity

Cooling: 12.30 kW Heating: 14.22

Piping

Actual piping length: m 7.5

Position of outdoor unit relative to indoor unit

☐ Higher ☒ Same Floor ☐ Lower

Height difference between outdoor and indoor units: m 0.0

Indoor unit not yet connected

- Otdr1 AOYG45LBT8 87.9%
- Indr1 AUYG07LVLA
- Indr2 AUYG07LVLA
- Indr3 AUYG07LVLA
- Indr4 AUYG07LVLA
- Indr5 AUYG07LVLA
- Indr6 AUYG07LVLA

Cancel OK

Моделът вътрешно и външно тяло се избират автоматично

Външно тяло (4/4)

Изберете "OK"

Продуктова информация за двете тела и снимка

Outdoor unit data

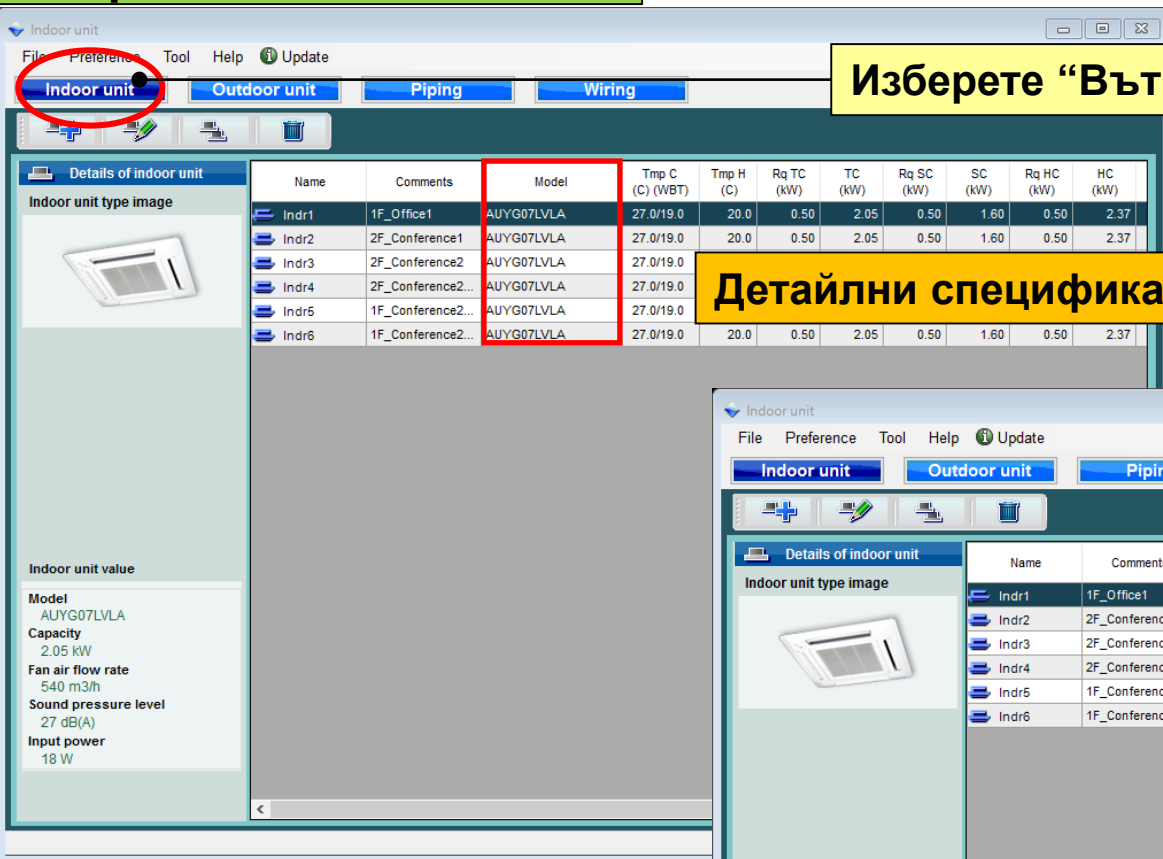
| | | | | |
|--|----------------------|----------|---------|----------|
| Name | Otdr1 | | | |
| Comments | | | | |
| Refrigerant | R410A | | | |
| Model | AOYG45LBT8 | | | |
| Type | 8 Rooms Multi System | | | |
| PS | 1 φ, 230V, 50Hz | | | |
| Combination | Actual | 87.9% | Max. | 100% |
| Capacity | Cooling | 14.00 kW | Heating | 16.00 kW |
| Actual capacity | Cooling | 12.30 kW | Heating | 14.22 kW |
| Indoor connect count | 6 | | | |
| Total indoor capa | Cooling | 12.30 kW | Heating | 14.22 kW |
| Outdoor temp. | Cooling | 35.0C | Heating | 7.0C |
| Piping | | | | |
| Actual piping length | 7.5m | | | |
| Height difference between outdoor and indoor units | 0.0m | | | |
| Position of outdoor unit relative to indoor unit | Same Floor | | | |

Outdoor unit image: A white outdoor air conditioning unit with a black circular fan grille.

Вътрешно тяло

Изберете “Вътрешно тяло”

Детайлни спецификации на вътрешните тела



Indoor unit

File Preference Tool Help Update

Indoor unit Outdoor unit Piping Wiring

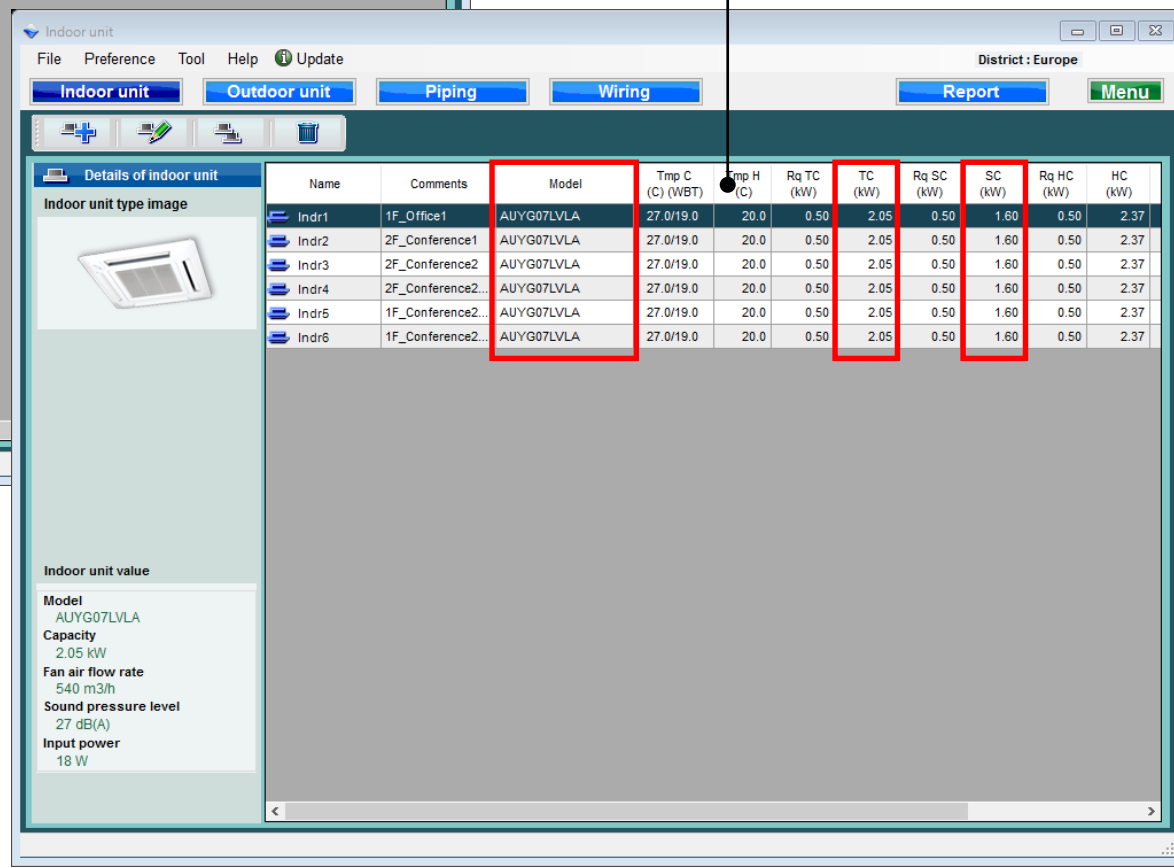
Details of indoor unit

Indoor unit type image

| Name | Comments | Model | Tmp C (C) (WBT) | Tmp H (C) | Rq TC (kW) | TC (kW) | Rq SC (kW) | SC (kW) | Rq HC (kW) | HC (kW) |
|-------|-------------------|------------|-----------------|-----------|------------|---------|------------|---------|------------|---------|
| Indr1 | 1F_Office1 | AUYG07LVLA | 27.0/19.0 | 20.0 | 0.50 | 2.05 | 0.50 | 1.60 | 0.50 | 2.37 |
| Indr2 | 2F_Conference1 | AUYG07LVLA | 27.0/19.0 | 20.0 | 0.50 | 2.05 | 0.50 | 1.60 | 0.50 | 2.37 |
| Indr3 | 2F_Conference2 | AUYG07LVLA | 27.0/19.0 | | | | | | | |
| Indr4 | 2F_Conference2... | AUYG07LVLA | 27.0/19.0 | | | | | | | |
| Indr5 | 1F_Conference2... | AUYG07LVLA | 27.0/19.0 | | | | | | | |
| Indr6 | 1F_Conference2... | AUYG07LVLA | 27.0/19.0 | 20.0 | 0.50 | 2.05 | 0.50 | 1.60 | 0.50 | 2.37 |

Indoor unit value

Model
AUYG07LVLA
Capacity
2.05 kW
Fan air flow rate
540 m3/h
Sound pressure level
27 dB(A)
Input power
18 W



Indoor unit

File Preference Tool Help Update

Indoor unit Outdoor unit Piping Wiring

Details of indoor unit

Indoor unit type image

| Name | Comments | Model | Tmp C (C) (WBT) | Tmp H (C) | Rq TC (kW) | TC (kW) | Rq SC (kW) | SC (kW) | Rq HC (kW) | HC (kW) |
|-------|-------------------|------------|-----------------|-----------|------------|---------|------------|---------|------------|---------|
| Indr1 | 1F_Office1 | AUYG07LVLA | 27.0/19.0 | 20.0 | 0.50 | 2.05 | 0.50 | 1.60 | 0.50 | 2.37 |
| Indr2 | 2F_Conference1 | AUYG07LVLA | 27.0/19.0 | 20.0 | 0.50 | 2.05 | 0.50 | 1.60 | 0.50 | 2.37 |
| Indr3 | 2F_Conference2 | AUYG07LVLA | 27.0/19.0 | 20.0 | 0.50 | 2.05 | 0.50 | 1.60 | 0.50 | 2.37 |
| Indr4 | 2F_Conference2... | AUYG07LVLA | 27.0/19.0 | 20.0 | 0.50 | 2.05 | 0.50 | 1.60 | 0.50 | 2.37 |
| Indr5 | 1F_Conference2... | AUYG07LVLA | 27.0/19.0 | 20.0 | 0.50 | 2.05 | 0.50 | 1.60 | 0.50 | 2.37 |
| Indr6 | 1F_Conference2... | AUYG07LVLA | 27.0/19.0 | 20.0 | 0.50 | 2.05 | 0.50 | 1.60 | 0.50 | 2.37 |

Indoor unit value

Model
AUYG07LVLA
Capacity
2.05 kW
Fan air flow rate
540 m3/h
Sound pressure level
27 dB(A)
Input power
18 W