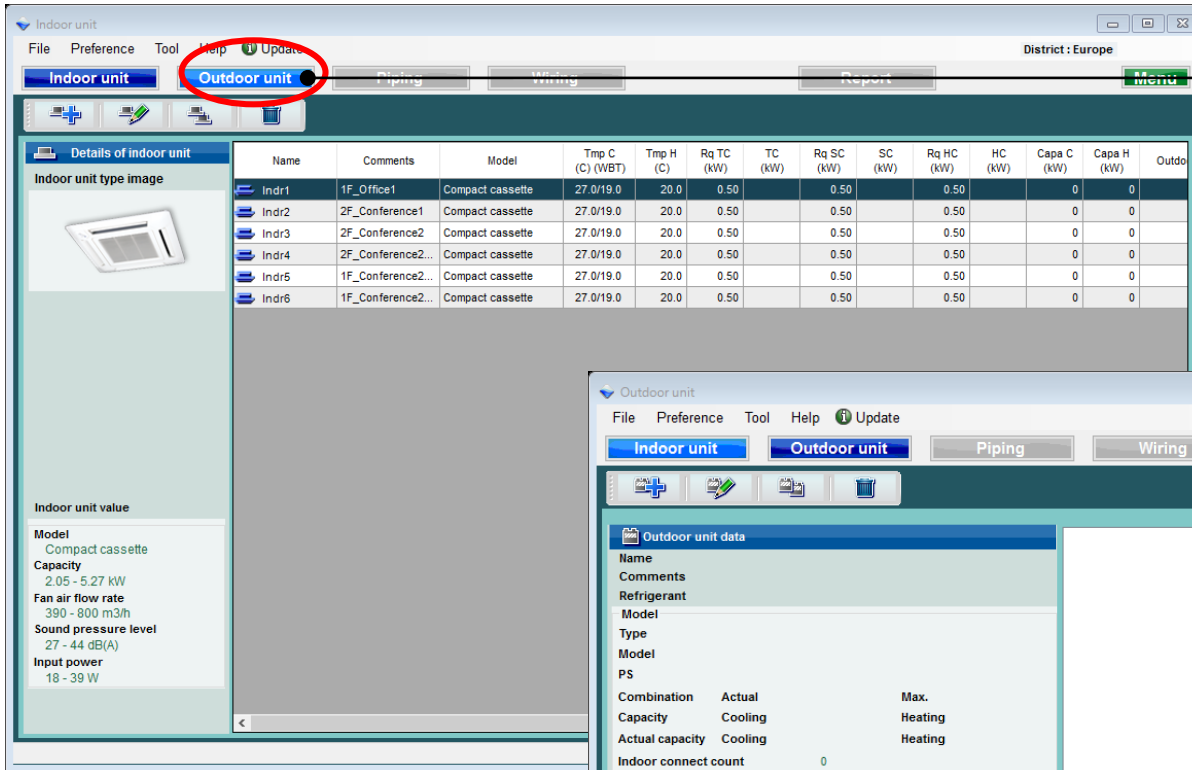


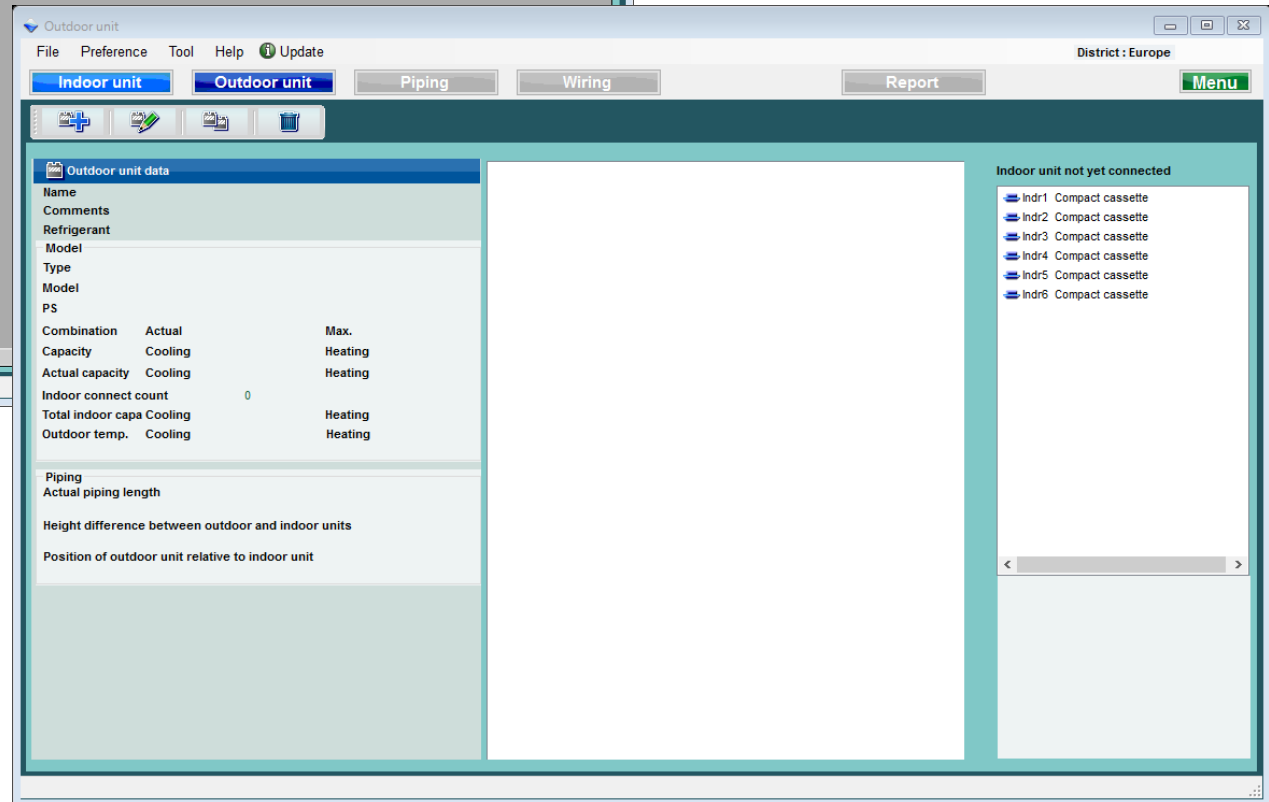
# Dış ünite ayarları

# Dizayn Simülatör



“Dış ünite” seç

Dış ünite başlangıç kayıt ekranını açın.



## Dış ünite (1/4)

“Yeni dış ünite ekle” seç

Yeni dış ünite girişi

İç ünite sili seç

İç ünite kopyalayıcı seç

İç üniteyi değiştir seç

Input new outdoor unit

Name: Otdr1

Comments:

Refrigerant: R410A

Model: 8 Rooms Multi System

Type: ☐ Manual selection

PS: ---

Combination: 100%

Outdoor dry bulb temperature

Cooling: C 35 Heating: C 7

Actual capacity

Cooling: kW Heating: kW

Piping

Actual piping length: m 7.5

Position of outdoor unit relative to indoor unit

☐ Higher ☒ Same Floor ☐ Lower

Height difference between outdoor and indoor units: m 0.0

Indoor unit not yet connected

- Indr1 Compact cassette
- Indr2 Compact cassette
- Indr3 Compact cassette
- Indr4 Compact cassette
- Indr5 Compact cassette
- Indr6 Compact cassette

Cancel OK

### Dış ünite (2/4)

Input new outdoor unit

Name: Otdr1

Comments:

Refrigerant: R410A

Model: 8 Rooms Multi System

Type: ☐ Manual selection

PS: ---

Combination: 100%

Outdoor dry bulb temperature

Cooling: C 35 Heating: C 7

Actual capacity

Cooling: kW Heating: kW

Piping

Actual piping length: m 7.5

Position of outdoor unit relative to indoor unit

☐ Higher ☒ Same Floor ☐ Lower

Height difference between outdoor and indoor units: m 0.0

Cancel OK

Tercih giriş adı ekranı

Giriş yorumlar. (Sınırlama on karakter)  
Özgürce yazmak mümkündür. ( Eski. : Çatı üstü, 1F)

Dış ünite türünü seçin

Dış ünite modelini seçin

Bağlı sınırlamayı seçin. Bağlı sınırlama aşılsa, dış ünite yukarıdaki modele otomatik olarak değiştirilir.

Dış ünitenin giriş tasarım koşulları .  
Tasarım koşullarına karar vermezseniz, "35 C" soğutma ve "7 C" ısıtma koşulları altında girin.

"Gerçek boru uzunluğu" ve "yükseklik farkı"değerini girin.  
İç üniteye göre dış ünitenin konumunu seçin.(※1)

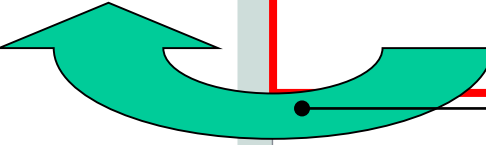
(※1) Kayıp katsayısı otomatik olarak hesaplanır.

## Dış Ünite (3/4)

Input new outdoor unit

Name: Otdr1  
Comments:  
Refrigerant: R410A  
Model: 8 Rooms Multi System  
Type: ☐ Manual selection  
PS: ---  
Combination: 100%  
Outdoor dry bulb temperature  
Cooling: C 35 Heating: C 7  
Actual capacity  
Cooling: kW Heating: kW  
Piping  
Actual piping length: m 7.5  
Position of outdoor unit relative to indoor unit  
☐ Higher ☒ Same Floor ☐ Lower  
Height difference between outdoor and indoor units: m 0.0

✖ Otdr1



Kırmızı işaret dış tasarım koşulları demektir.

İç Üniteyi gruplandırılacak şekilde ayarlamak için iç ünite kayıt ekranını kullanın. (Sürükle ve bırak)

Input new outdoor unit

Name: Otdr1  
Comments:  
Refrigerant: R410A  
Model: 8 Rooms Multi System  
Type: ☐ Manual selection  
Model: AOYG45LBTS  
PS: 1 φ, 230V, 50Hz  
Combination: 100%  
Outdoor dry bulb temperature  
Cooling: C 35 Heating: C  
Actual capacity  
Cooling: 12.30 kW Heating: 14.22  
Piping  
Actual piping length: m 7.5  
Position of outdoor unit relative to indoor unit  
☐ Higher ☒ Same Floor ☐ Lower  
Height difference between outdoor and indoor units: m 0.0

Otdr1 AOYG45LBTS 67.9%  
Indr1 AUYG07LVLA  
Indr2 AUYG07LVLA  
Indr3 AUYG07LVLA  
Indr4 AUYG07LVLA  
Indr5 AUYG07LVLA  
Indr6 AUYG07LVLA

Dış ünite ve iç ünite modeli otomatik olarak seçilir.

Cancel

OK

Input new outdoor unit

Name: Ond1

Comments:

Refrigerant: R410A

Model: AOYG45LBT8

Type: 8 Rooms Multi System

Manual selection: ☒

PS: 1 φ, 230V, 50Hz

Combination: 100%

Outdoor dry bulb temperature:

Cooling: 36 Heating: 7

Actual capacity:

Cooling: 12.30 kW Heating: 14.22 kW

Piping:

Actual piping length: 7.5 m

Position of outdoor unit relative to indoor unit:

☐ Higher ☒ Same floor ☐ Lower

Height difference between outdoor and indoor units: 0.0 m

Indoor unit not yet connected

Indr1: AOYG07LVLA  
Indr2: AOYG07LVLA  
Indr3: AOYG07LVLA  
Indr4: AOYG07LVLA  
Indr5: AOYG07LVLA  
Indr6: AOYG07LVLA

OK

**Dış ünite ve iç ünite ürün bilgileri ve görüntü ekranı.**

**Outdoor unit data**

Name: Otdr1

Comments:

Refrigerant: R410A

Model:

Type: 8 Rooms Multi System

Model: AOYG45LBT8

PS: 1ø, 230V, 50Hz

Combination	Actual	87.9%	Max.	100%
Capacity	Cooling	14.00 kW	Heating	16.00 kW
Actual capacity	Cooling	12.30 kW	Heating	14.22 kW
Indoor connect count	6			
Total indoor capa	Cooling	12.30 kW	Heating	14.22 kW
Outdoor temp.	Cooling	35.0C	Heating	7.0C

Piping

Actual piping length: 7.5m

Height difference between outdoor and indoor units: 0.0m

Position of outdoor unit relative to indoor unit: Same Floor

Indoor unit not yet connected

3D model of the outdoor unit: AOYG45LBT8

# Dış ünite ayarları

# Dizayn Simülatör

## İç ünite

Indoor unit

File Preference Tool Help Update

Indoor unit Outdoor unit Piping Wiring

Details of indoor unit

Indoor unit type image

Name	Comments	Model	Tmp C (C) (WBT)	Tmp H (C)	Rq TC (kW)	TC (kW)	Rq SC (kW)	SC (kW)	Rq HC (kW)	HC (kW)
Indr1	1F_Office1	AUYG07LVLA	27.0/19.0	20.0	0.50	2.05	0.50	1.60	0.50	2.37
Indr2	2F_Conference1	AUYG07LVLA	27.0/19.0	20.0	0.50	2.05	0.50	1.60	0.50	2.37
Indr3	2F_Conference2	AUYG07LVLA	27.0/19.0							
Indr4	2F_Conference2...	AUYG07LVLA	27.0/19.0							
Indr5	1F_Conference2...	AUYG07LVLA	27.0/19.0							
Indr6	1F_Conference2...	AUYG07LVLA	27.0/19.0	20.0	0.50	2.05	0.50	1.60	0.50	2.37

Indoor unit value

Model  
AUYG07LVLA  
Capacity  
2.05 kW  
Fan air flow rate  
540 m3/h  
Sound pressure level  
27 dB(A)  
Input power  
18 W

“İç ünite” seç

İç ünite ekranında detay özelliklerini onaylayın.

Indoor unit

File Preference Tool Help Update

Indoor unit Outdoor unit Piping Wiring

District : Europe

Report Menu

Details of indoor unit

Indoor unit type image

Name	Comments	Model	Tmp C (C) (WBT)	Tmp H (C)	Rq TC (kW)	TC (kW)	Rq SC (kW)	SC (kW)	Rq HC (kW)	HC (kW)
Indr1	1F_Office1	AUYG07LVLA	27.0/19.0	20.0	0.50	2.05	0.50	1.60	0.50	2.37
Indr2	2F_Conference1	AUYG07LVLA	27.0/19.0	20.0	0.50	2.05	0.50	1.60	0.50	2.37
Indr3	2F_Conference2	AUYG07LVLA	27.0/19.0	20.0	0.50	2.05	0.50	1.60	0.50	2.37
Indr4	2F_Conference2...	AUYG07LVLA	27.0/19.0	20.0	0.50	2.05	0.50	1.60	0.50	2.37
Indr5	1F_Conference2...	AUYG07LVLA	27.0/19.0	20.0	0.50	2.05	0.50	1.60	0.50	2.37
Indr6	1F_Conference2...	AUYG07LVLA	27.0/19.0	20.0	0.50	2.05	0.50	1.60	0.50	2.37

Indoor unit value

Model  
AUYG07LVLA  
Capacity  
2.05 kW  
Fan air flow rate  
540 m3/h  
Sound pressure level  
27 dB(A)  
Input power  
18 W