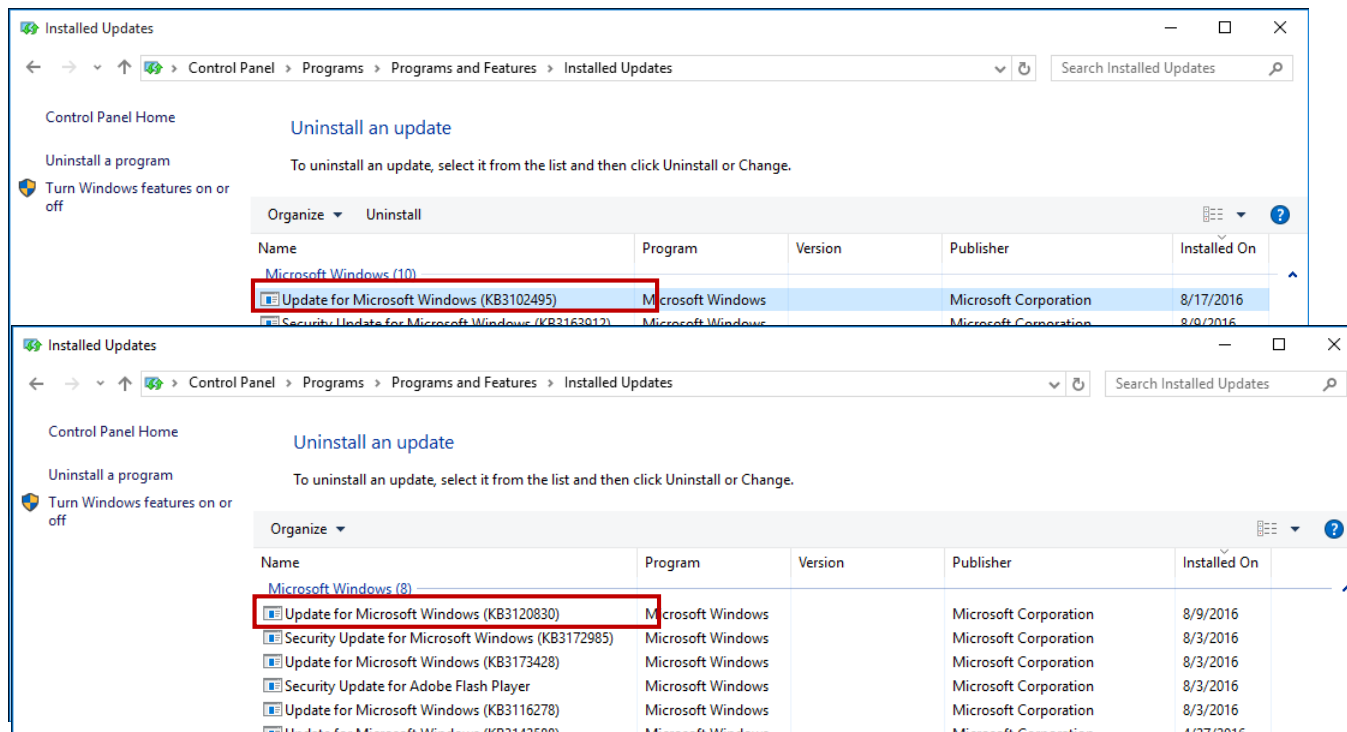


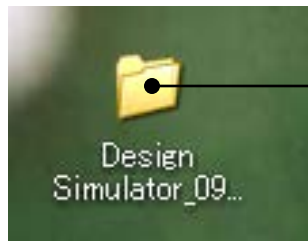
FUJITSU GENERAL Софтуер за проектиране Дизайн симулатор





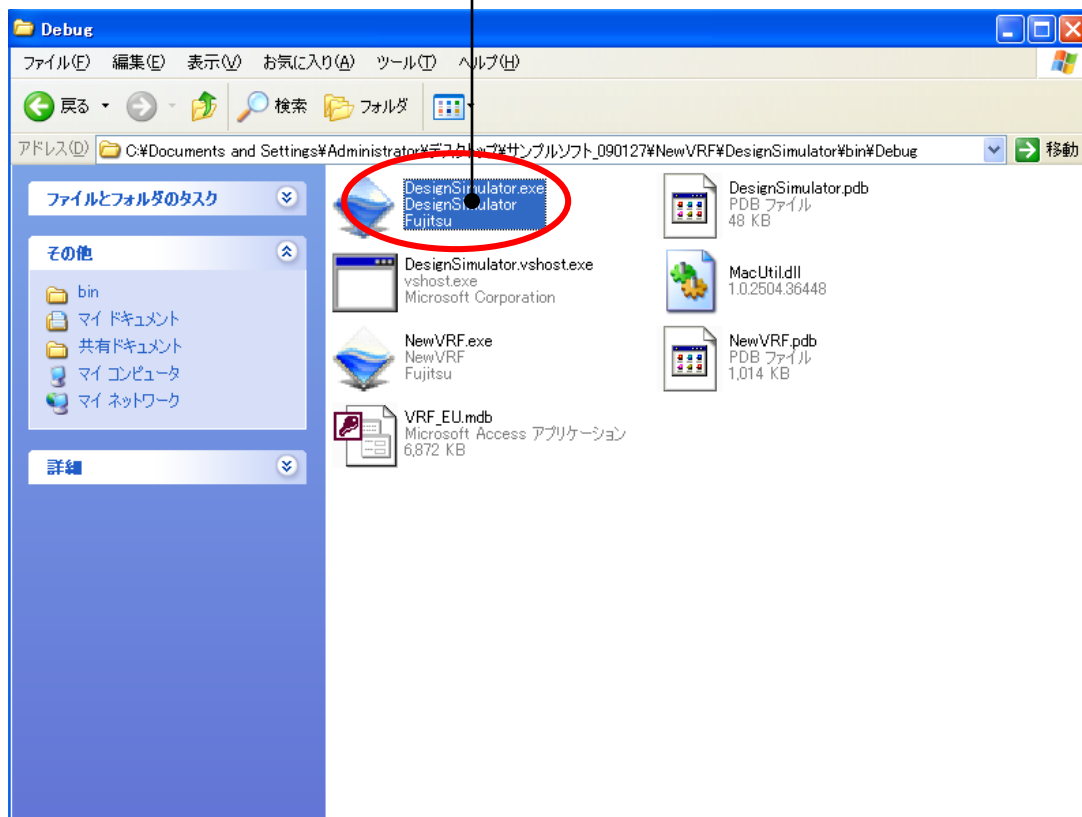
За да стартирате е необходим софтуер Microsoft ".Net Framework4.6.1".
Уверете се, че програмата е инсталирана на Вашия компютър.
В случай че не е, можете да посетите този уебсайт за информация:
<https://www.microsoft.com/en-US/download/details.aspx?id=49982>

За да инсталирате Дизайн симулатор, моля посетете:
https://ssl.fujitsu-general.com/g-global/support/tool/data/appendix_vrf/20170525/ds_install-manual.pdf

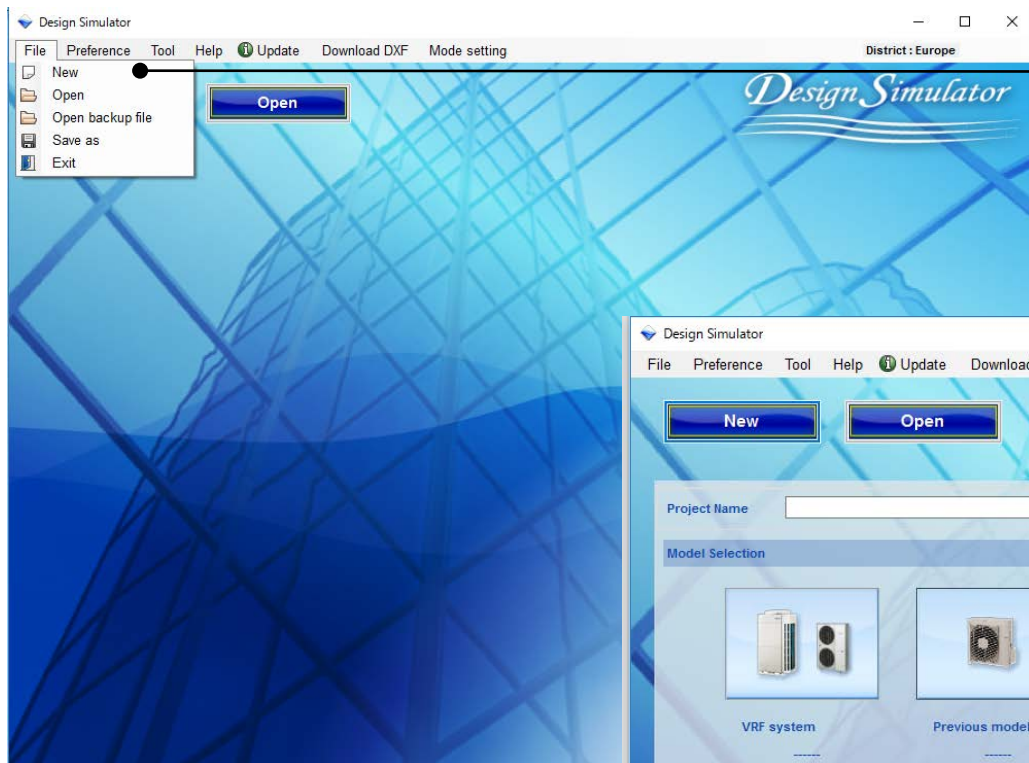


Папка с изтеглени софтуер

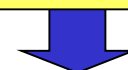
Натиснете Design Simulator.exe.



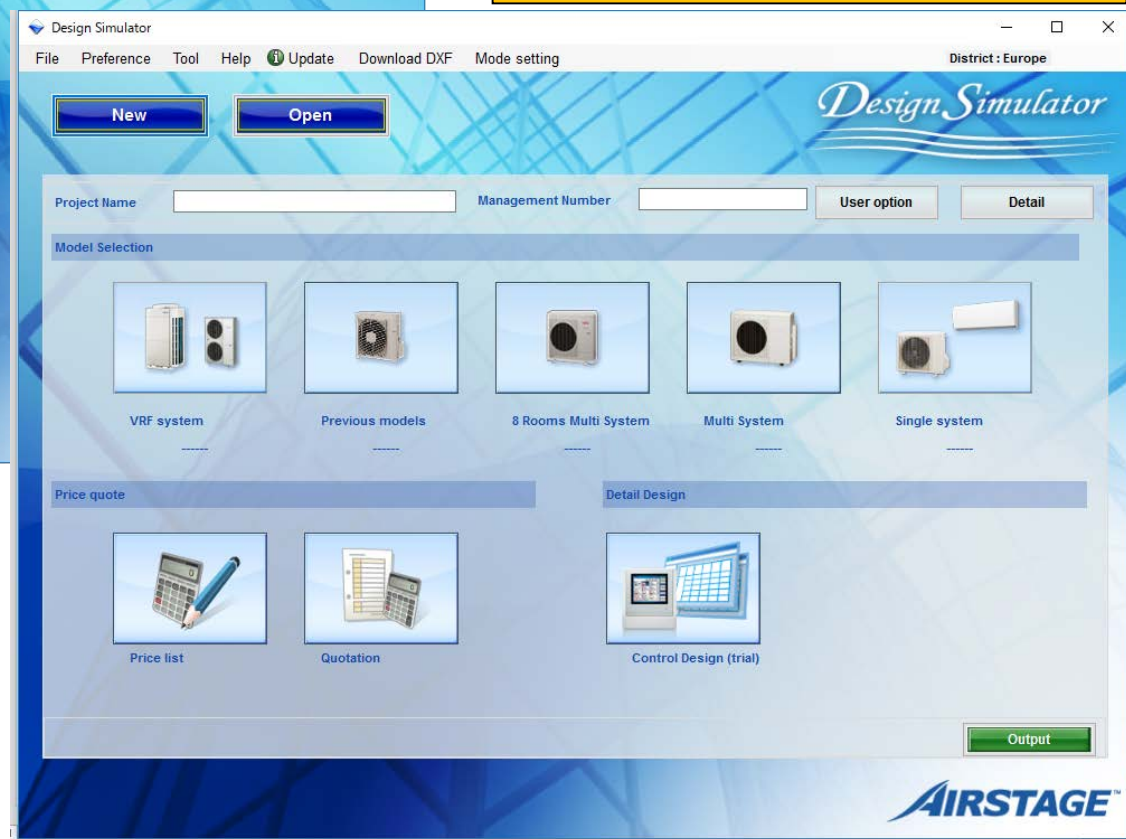
Нов проект



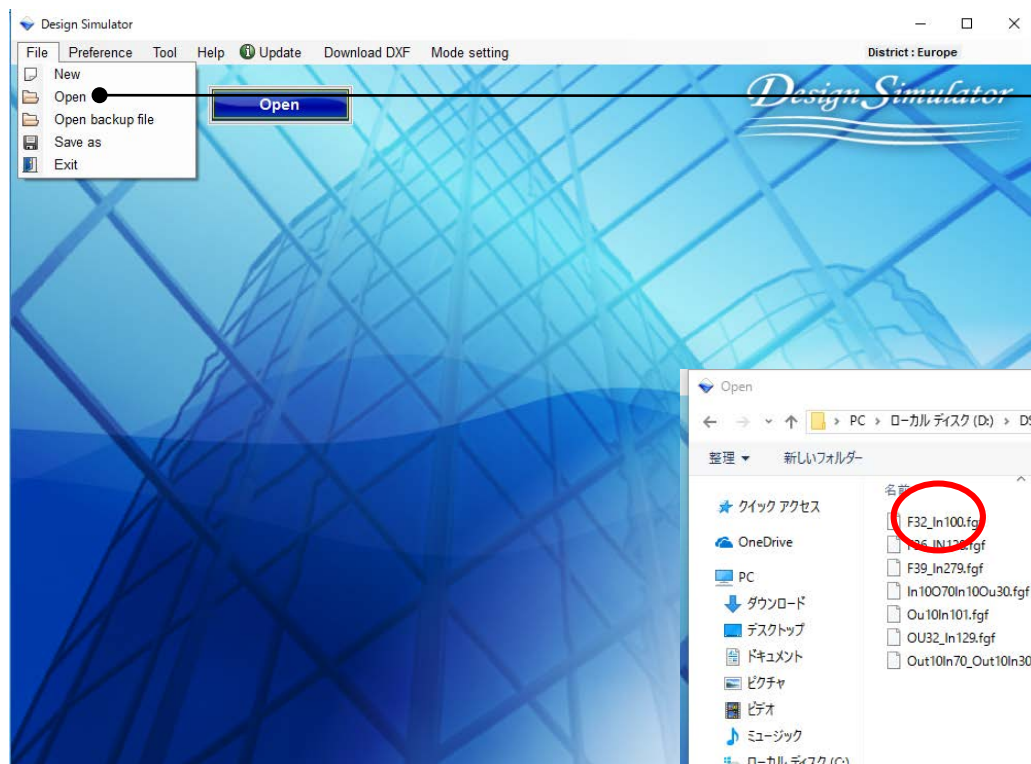
Изберете “Нов”



В Дизайн симулатор се отваря нов проект



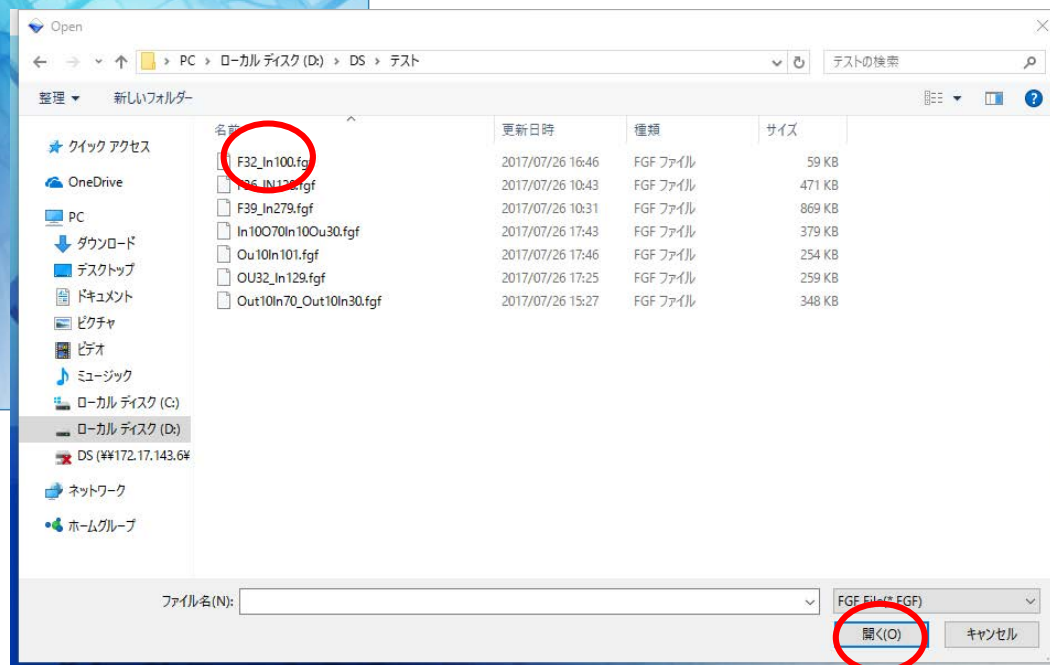
Отваряне на проект



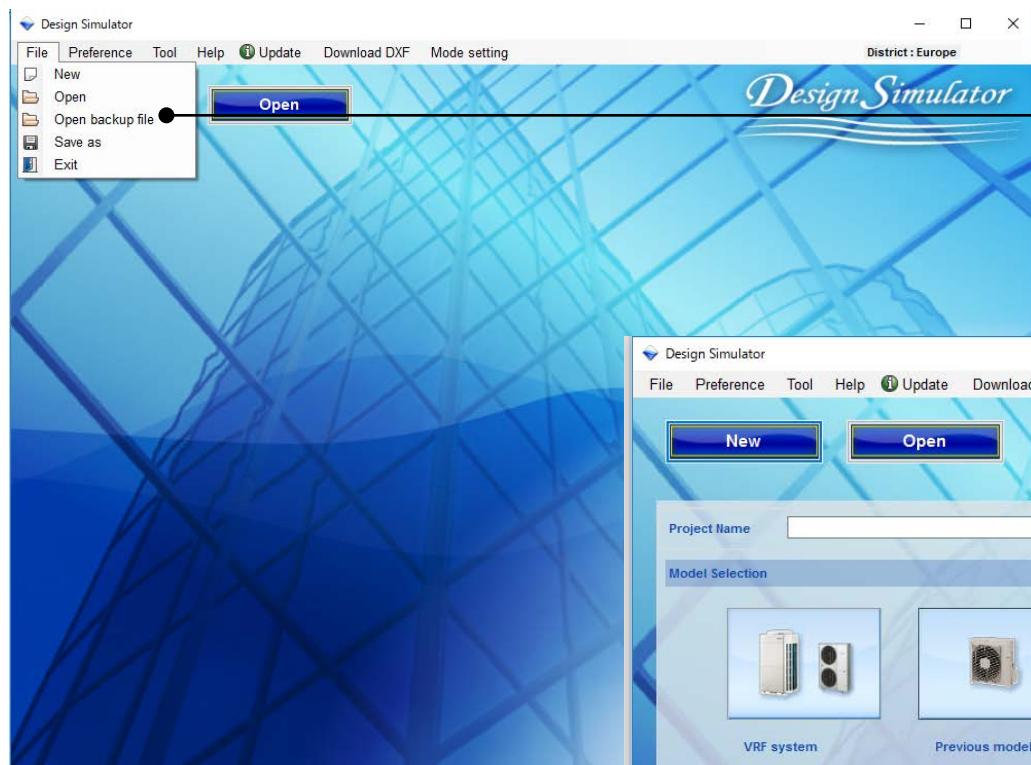
Изберете “Отвори”



Отваря създадените
файлове с проекти

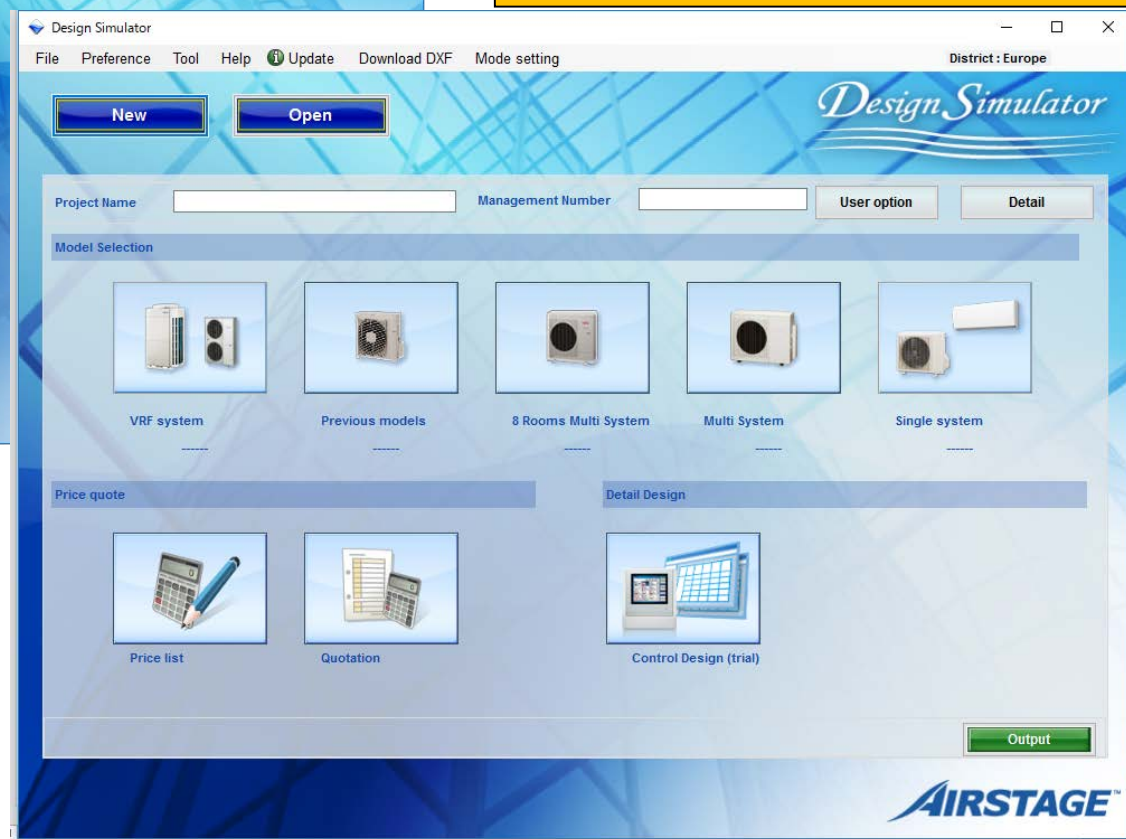


Отваряне на резервно копие

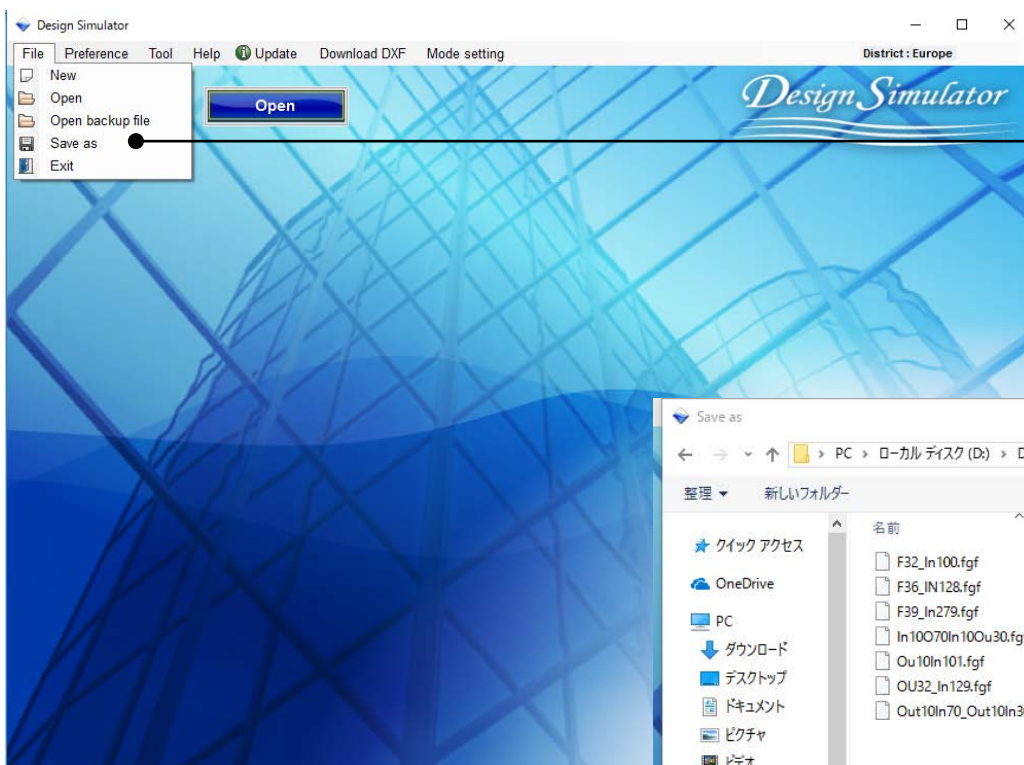


Изберете “Отвори рез. копие”

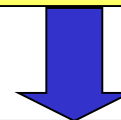
Прочита автоматично създадените данни



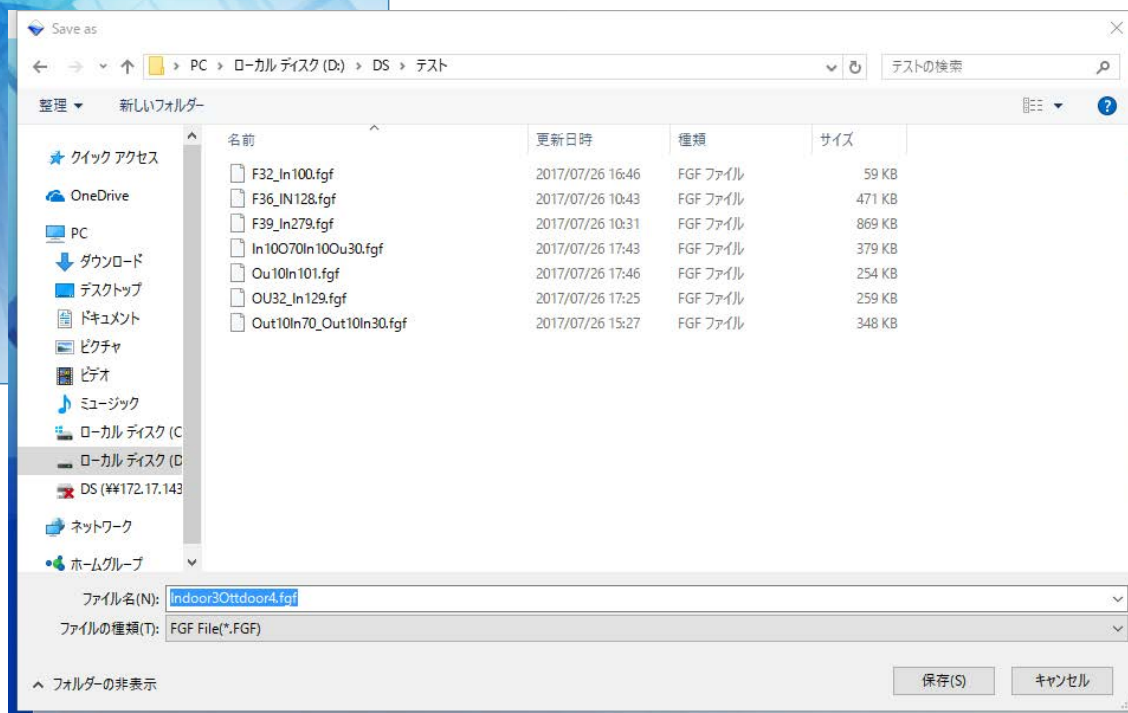
Запазване като



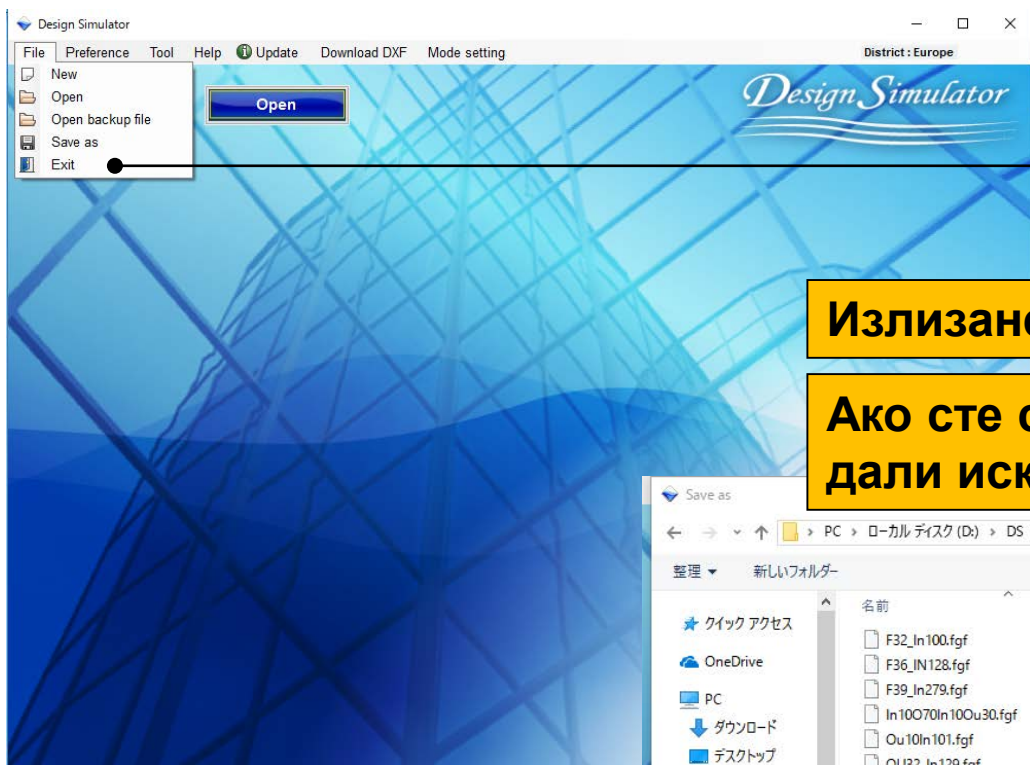
Изберете “Запазване като”



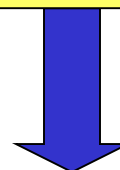
Запазва файла с проекта



Исход

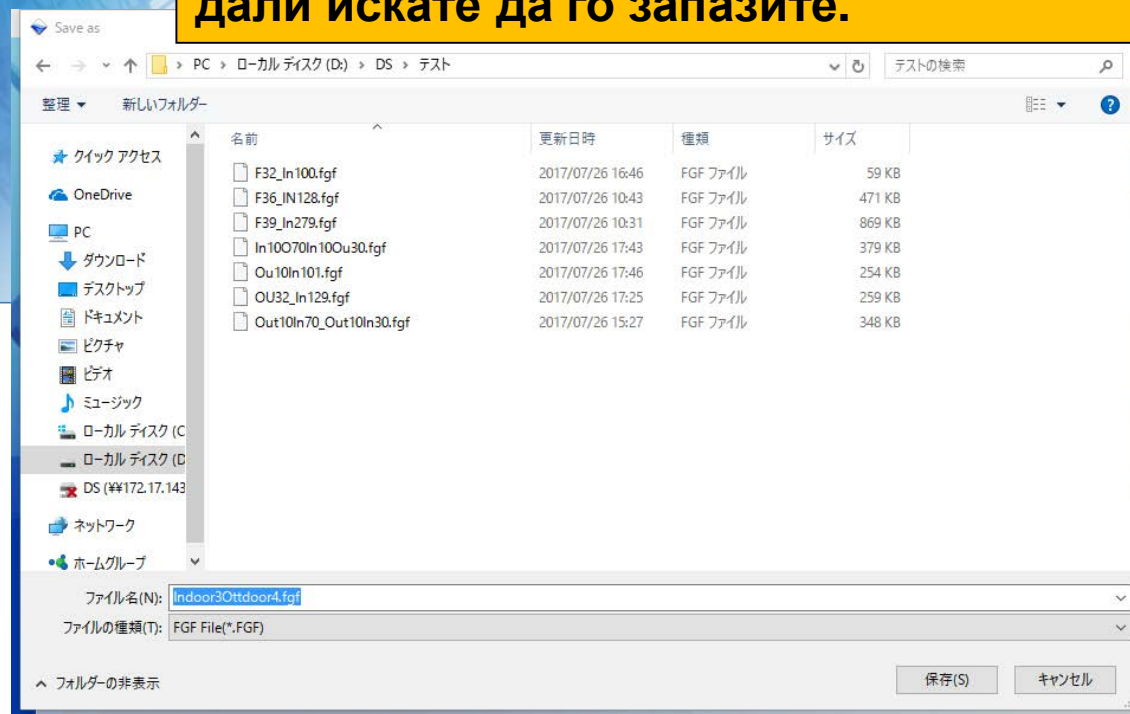


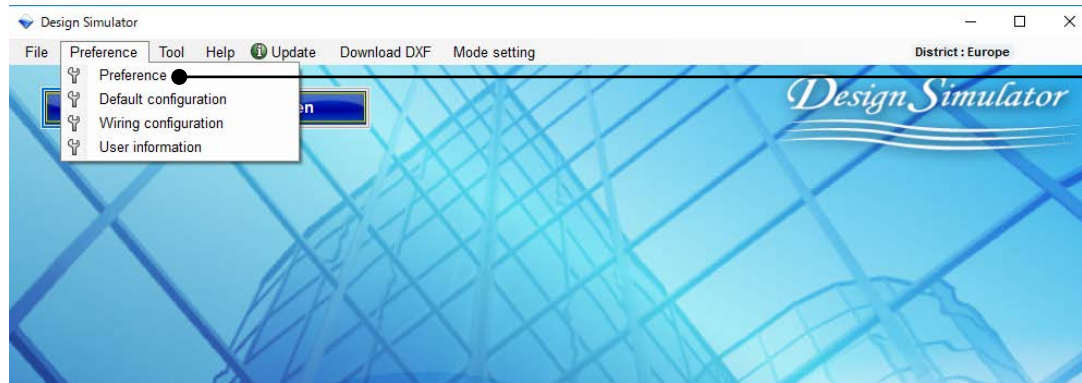
Изберете “Исход”



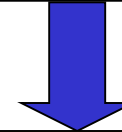
Излизане, освен ако не е създаден проект

Ако сте създали проект, програмата пита дали искате да го запазите.

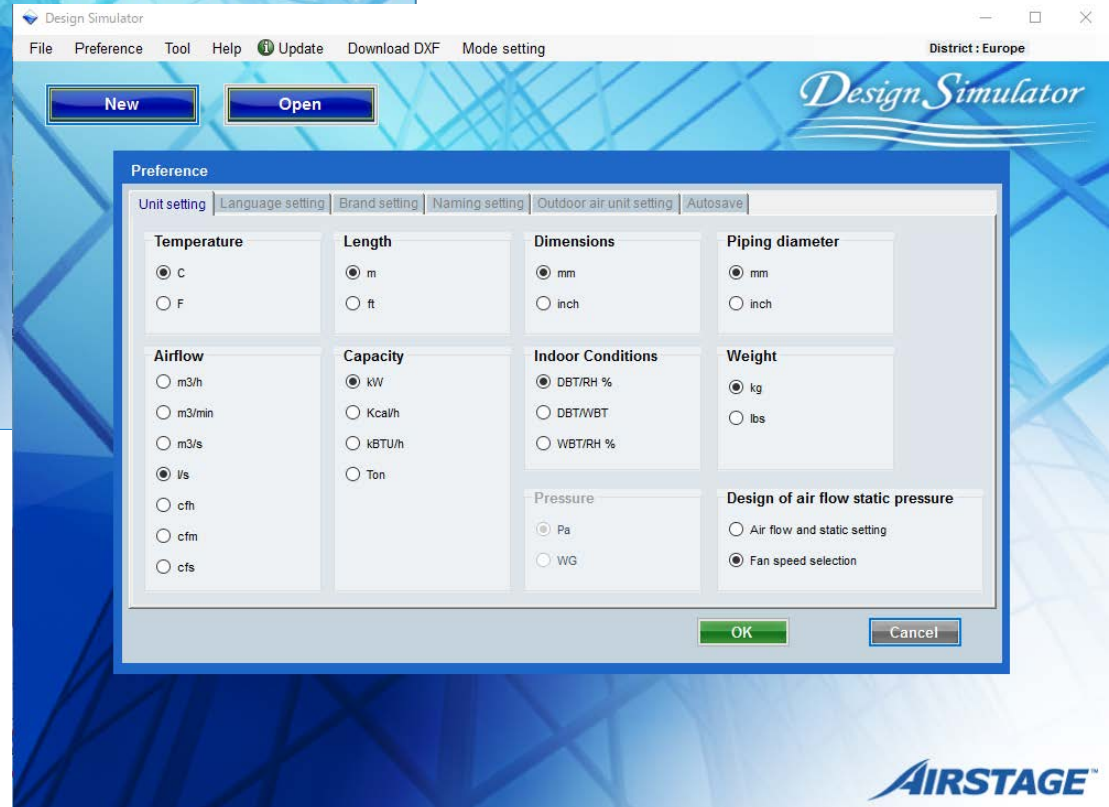




Изберете “предпочитания”



Отваря меню за предпочитанията



Настройка на телата (мерни единици) (1/2)

Preference

Unit setting | Language setting | Brand setting | Naming setting | Outdoor air unit setting | Autosave

Temperature

☒ C
☐ F

Length

☒ m
☐ ft

Dimensions

☒ mm
☐ inch

Piping diameter

☒ mm
☐ inch

Airflow

☐ m3/h
☐ m3/min
☐ m3/s
☒ l/s
☐ cfm
☐ cfm
☐ cfs

Capacity

☒ kW
☐ Kcal/h
☐ kBTU/h
☐ Ton

Indoor Conditions

☒ DBT/RH %
☐ DBT/WBT
☐ WBT/RH %

Weight

☒ kg
☐ lbs

Pressure

☒ Pa
☐ WG

Design of air flow static pressure

☒ Air flow and static setting
☐ Fan speed selection

OK Cancel

Настройка само за канални тела
Изберете “Дебит и статично налягане”

Отразява се при добавяне на ново
вътрешно тяло

+ Input new indoor unit X

Name Indr1
Comments

Model
☐ Manual selection
Type Slim duct(Drain pump internal)

Model

RC
Wired RC(Touch) Options

Design criteria

Cooling

| | | | | | | |
|-----|------|------|-------------------|----|----|-----|
| DBT | C | 27.0 | Required capacity | TC | kW | 0.5 |
| | RH % | 43.4 | | SC | kW | 0.5 |

Heating

| | | | | | | |
|-----|---|----|-------------------|----|----|-----|
| DBT | C | 20 | Required capacity | HC | kW | 0.5 |
|-----|---|----|-------------------|----|----|-----|

Primary setting

☐ Required air flow
☐ External static pressure

Required air flow
l/s 141.6 Range

External static pressure
Pa 25 Range

Additional information
Room setting

Cancel Add

Настройка на телата (мерни единици) (2/2)

Настройка само за канални тела
Изберете “Дебит и статично налягане”

Preference

Unit setting | Language setting | Brand setting | Naming setting | Outdoor air unit setting | Autosave

Temperature

☒ C
☐ F

Length

☒ m
☐ ft

Dimensions

☒ mm
☐ inch

Piping diameter

☒ mm
☐ inch

Airflow

☐ m3/h
☐ m3/min
☐ m3/s
☒ l/s
☐ cfm
☐ cfm
☐ cfs

Capacity

☒ kW
☐ Kcal/h
☐ kBTU/h
☐ Ton

Indoor Conditions

☒ DBT/RH %
☐ DBT/WBT
☐ WBT/RH %

Weight

☒ kg
☐ lbs

Pressure

☒ Pa
☐ WG

Design of air flow static pressure

☐ Air flow and static setting
☒ Fan speed selection

OK Cancel

Отразява се в “Ниво на въздушния поток”

Input new indoor unit

Name: Indr1

Comments:

Model

☐ Manual selection

Type: Slim duct(Drain pump internal)

Model:

Airflow level

High

RC: Wired RC(Touch)

Options

Design criteria

Cooling

| | | | | | | |
|-----|------|------|-------------------|----|----|-----|
| DBT | C | 27.0 | Required capacity | TC | kW | 0.5 |
| | RH % | 43.4 | | SC | kW | 0.5 |

Heating

| | | | | | | |
|-----|---|----|-------------------|----|----|-----|
| DBT | C | 20 | Required capacity | HC | kW | 0.5 |
|-----|---|----|-------------------|----|----|-----|

Additional information

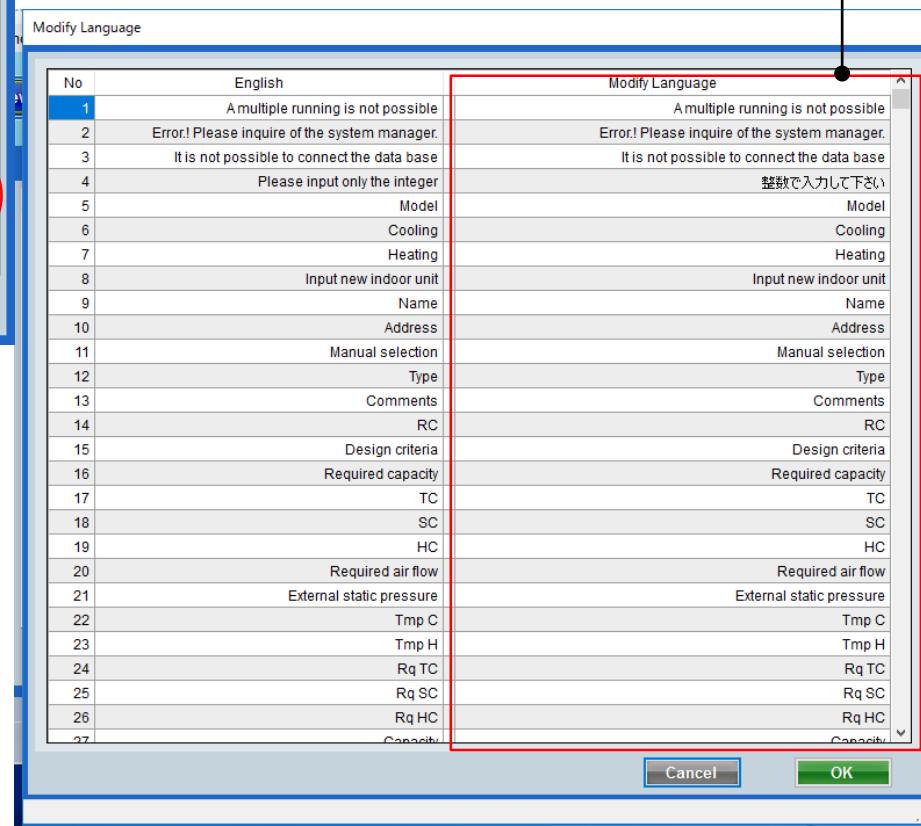
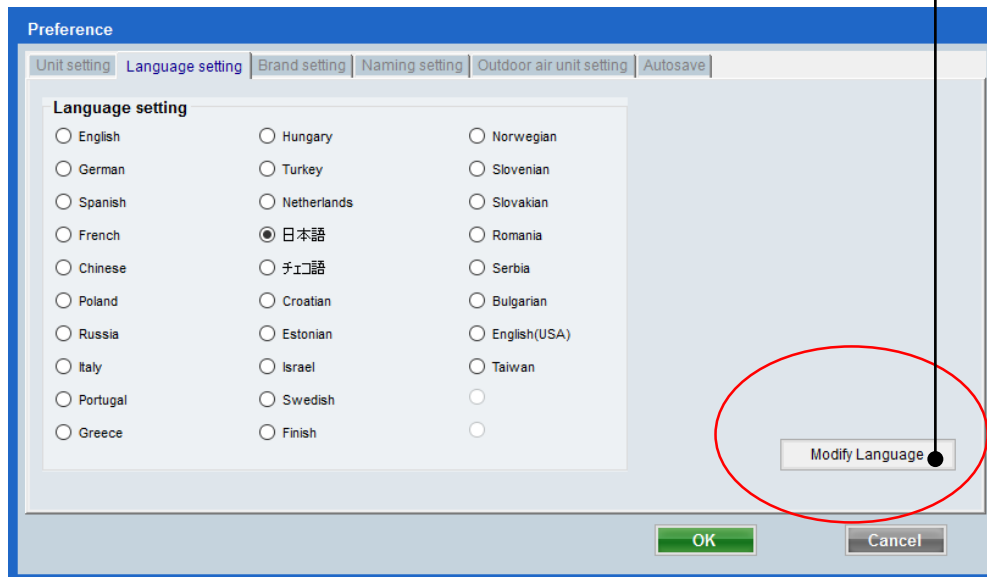
Room setting

Cancel Add

Езикови настройки

Изберете “Промени езика”

Въведете “Промени езика”



Настройка на марка

Preference

Unit setting | Language setting | **Brand setting** | Naming setting | Outdoor air unit setting | Autosave

Brand Name

☒ FUJITSU

☐ GENERAL

District

☒ Europe

☐ China

☐ USA, Canada

☐ Australia

☐ Brazil

☐ Asia

☐ Taiwan

☐ Hong Kong

☐ Middle East

☐

Изберете "Район"

Марката не може да се промени

OK Cancel

Настройка на имената

Preference

Unit setting | Language setting | Brand setting | **Naming setting** | Outdoor air unit setting | Autosave

Naming setting

Indoor unit

Outdoor unit

Default output folder name

...

Data in/out folder

...

OK Cancel

Въвеждане "Наименования"

Изберете "Исходна папка по подразбиране"

Изберете "Данни в/извън папка"

Настройка на тяло за пресен въздух (1/3)

Preference

Unit setting | Language setting | Brand setting | Naming setting | Outdoor air unit setting | Autosave

Selection of outdoor air processing unit

☒ Outdoor air unit

☒ DX kit

☒ The equipment linked to DX kit is included in an estimate.

Outdoor air unit in current project will be removed if its check box is cleared.

Naming setting

Outdoor air unit: OutAir

DX kit: DX

Future unit

☒ Enable

Default name: Future

Heat exchanger volume

☒ cm3

☐ in3

Report outputs

☒ Include Future units

(Material, Piping and Wiring diagram, etc.)

OK Cancel

Изберете “Избор на външно тяло за пресен въздух”

Въведете “Наименование”

Въведете “Обем на топлообменника”

Изберете “Включете Допълнителни елементи”

Изберете “Включено”

Въведете “Наименование”

Възможно е да изберете тръбното трасе и тялото за въздух дори ако вътрешните тела не са избрани.

Тяло за пресен въздух (2/3)

Изберете "Избор на тяло за пресен въздух"

Отразява се на екрана "Вътрешно тяло"

Preference

Unit setting | Language setting | Brand setting | Naming setting | Outdoor air unit setting | Autosave

1) Selection of outdoor air processing unit

2) ☒ Outdoor air unit

3) ☒ DX kit

☒ The equipment linked to DX kit is included in an estimate.

Outdoor air unit in current project will be removed if its check box is cleared.

Naming setting

Outdoor air unit: OutAir

DX kit: DX

Heat exchanger volume

☒ cm3

☐ in3

Future unit

☒ Enable

Default name: Future

Report outputs

☒ Include Future units

(Material, Piping and Wiring diagram, etc.)

OK Cancel

Indoor unit Outdoor unit Piping Wiring Control Report Menu

Indoor unit Outdoor air unit DX kit Indoor unit Outdoor air unit Future unit

1)

Selection of outdoor air processing unit

☐ Outdoor air unit

☐ DX kit

☐ The equipment linked to DX kit is included in an estimate.

Outdoor air unit in current project will be removed if its check box is cleared.

☒ Indoor unit

2)

Selection of outdoor air processing unit

☒ Outdoor air unit

☐ DX kit

☐ The equipment linked to DX kit is included in an estimate.

Outdoor air unit in current project will be removed if its check box is cleared.

☒ Indoor unit

☐ Outdoor air unit

3)

Selection of outdoor air processing unit

☒ Outdoor air unit

☒ DX kit

☐ The equipment linked to DX kit is included in an estimate.

Outdoor air unit in current project will be removed if its check box is cleared.

Selection of outdoor air processing unit

☒ Outdoor air unit

☒ DX kit

☒ The equipment linked to DX kit is included in an estimate.

Outdoor air unit in current project will be removed if its check box is cleared.

☒ Indoor unit

☐ Outdoor air unit

DX kit

☐ Indoor unit

☐ Outdoor air unit

Тяло за пресен въздух (3/3)

Future unit

☒ Enable

Default name



| | | | | | |
|--|--|---------------|-----------------------------------|--|-----------------------------------|
| <input checked="" type="radio"/> Indoor unit | <input type="radio"/> Outdoor air unit | DX kit | <input type="radio"/> Indoor unit | <input type="radio"/> Outdoor air unit | <input type="radio"/> Future unit |
|--|--|---------------|-----------------------------------|--|-----------------------------------|

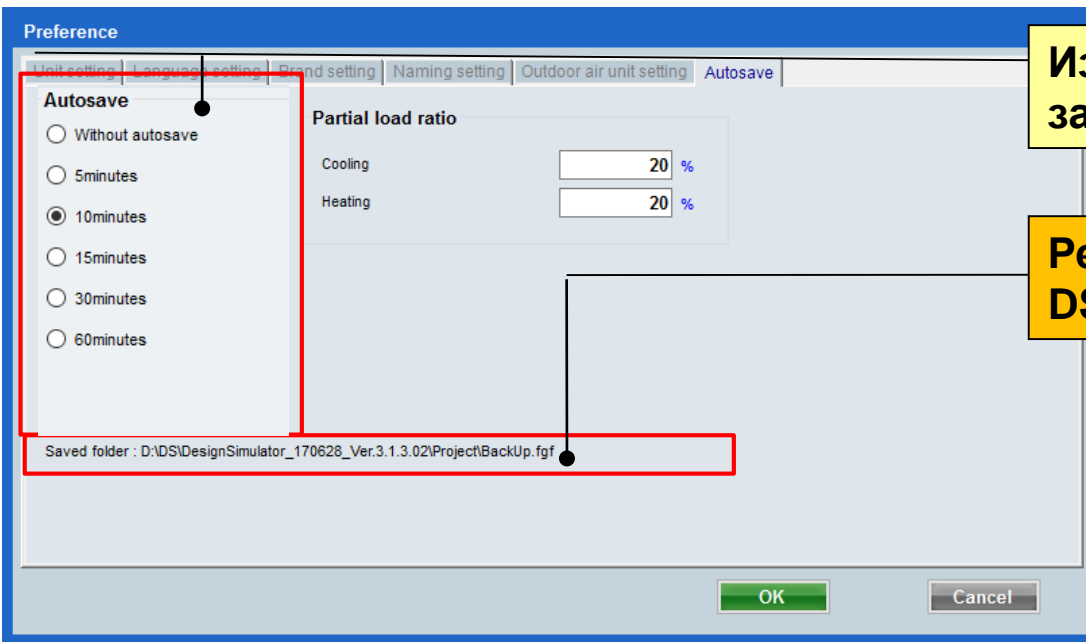
Изберете "Избор на тяло за пресен въздух"
Отразява се на екрана "Вътрешно тяло"

Report outputs

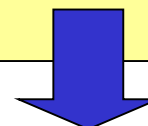
☒ Include Future units
(Material, Piping and Wiring diagram, etc.)

Изберете "Избор на тяло за пресен въздух"
Отразява се в "Отчет на устройствата"

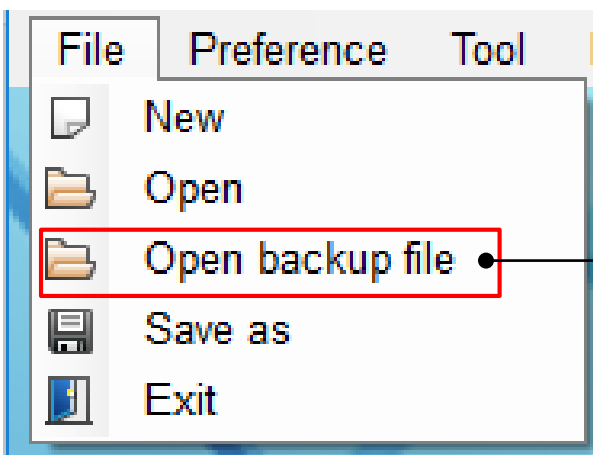
Настройка за автоматично запазване



Изберете време за автоматично запазване

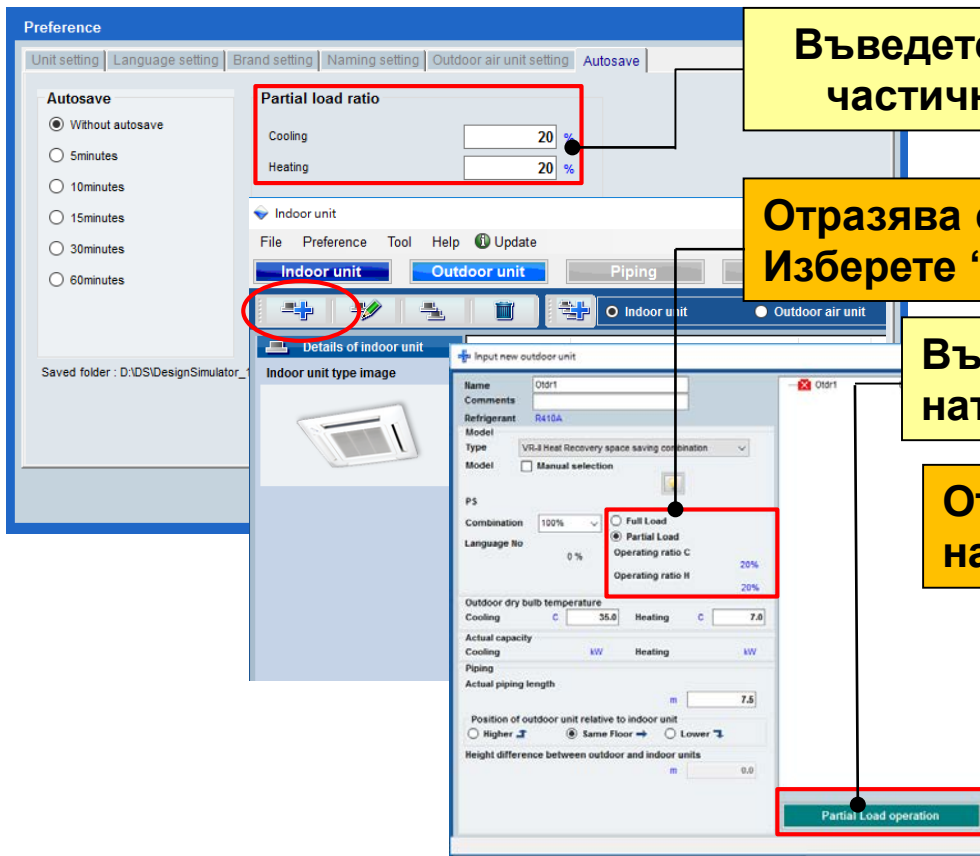


Резервното копие се запазва в папка DS в избраното време.



Резервното копие може да се отвори от “Файл – Отвори резервно копие”

Коефициент на частично натоварване



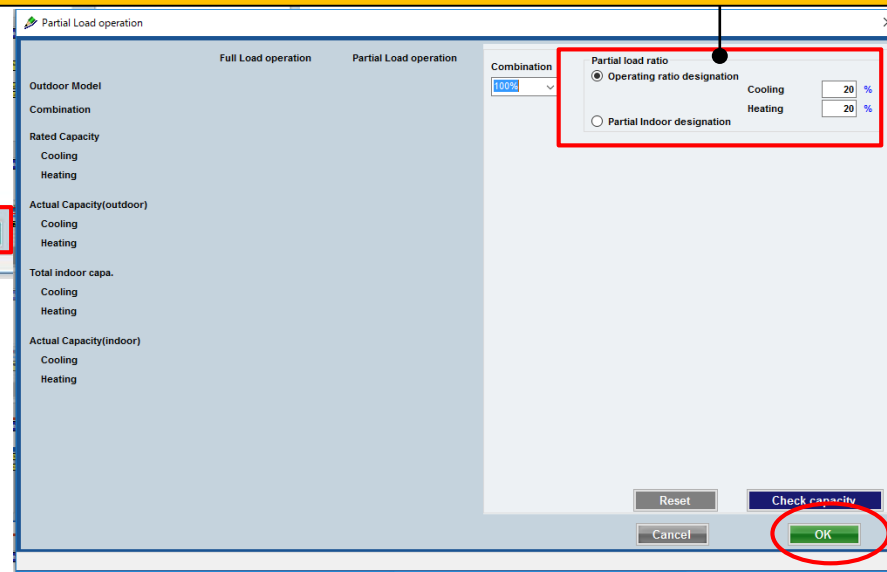
Въведете “Коефициент на частично натоварване”

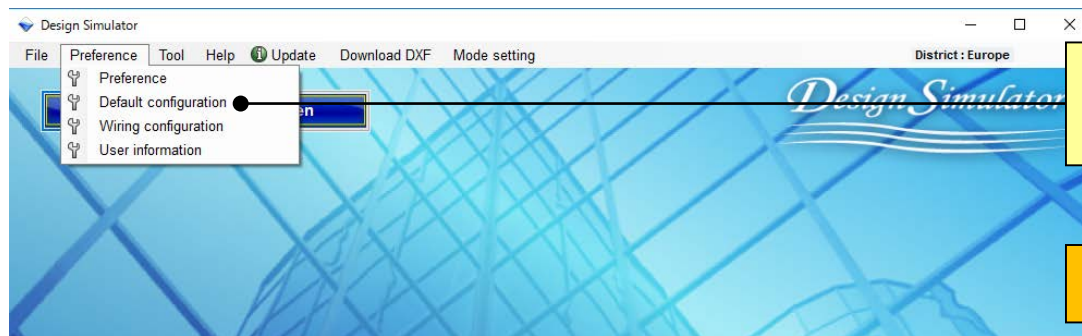
Отразява се на екран “Външно тяло”
Изберете “Коефициент на частично натоварване”

Въведете “Коефициент на частично натоварване”

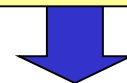
Отразява се на “Коефициент на частично натоварване”

“Частично натоварване” позволява да изберете външно тяло включвайки частична функция на вътрешните тела.

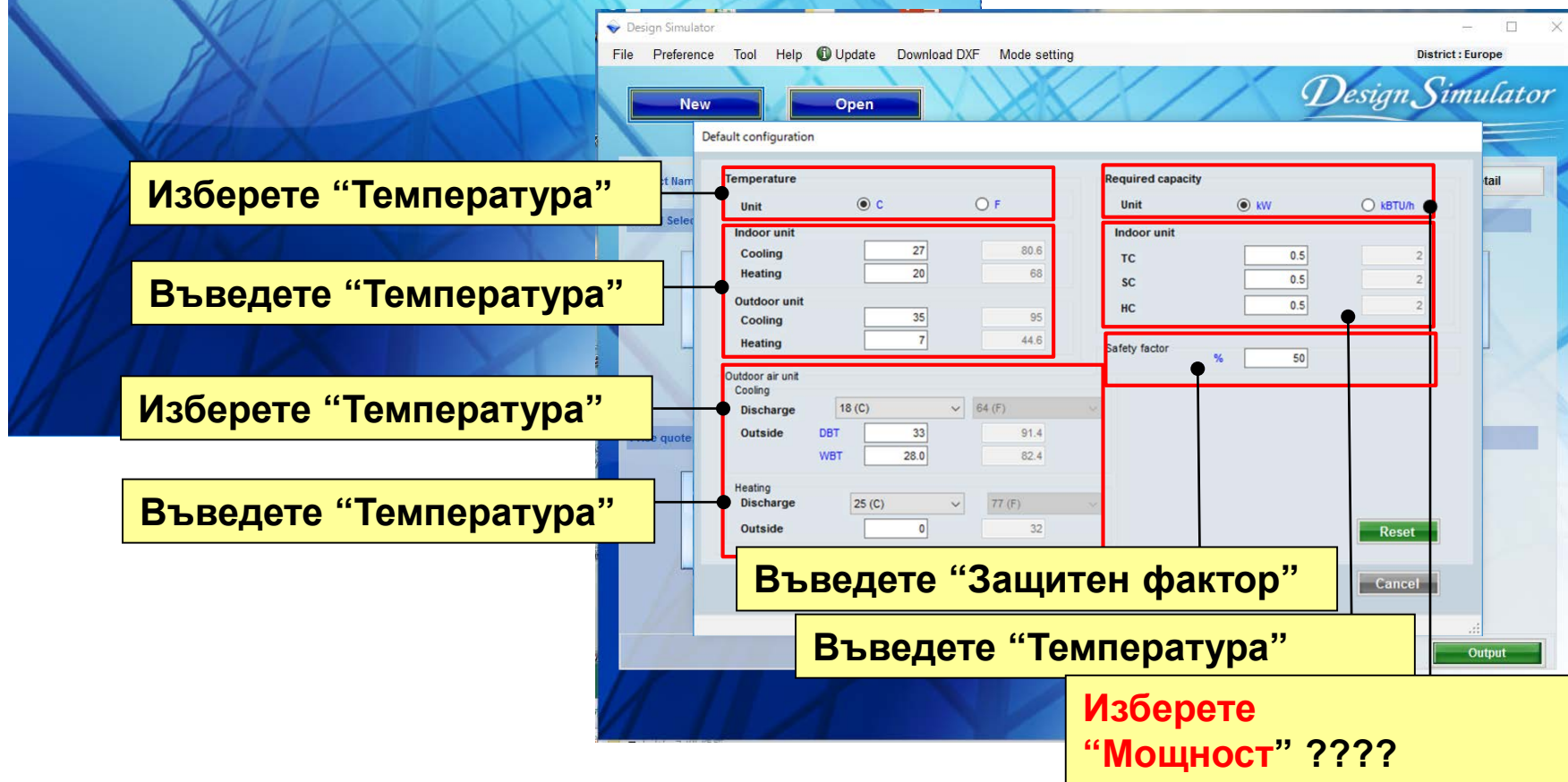




Изберете “Конфигурация по подразбиране”



Отваря менюто



Изберете “Температура”

Въведете “Температура”

Изберете “Температура”

Въведете “Температура”

Въведете “Защитен фактор”

Въведете “Температура”

Изберете
“Мощност” ????

Конфигурация по подразбиране (1/2)

Default configuration

Temperature

Unit ☒ C ☐ F

Indoor unit

Cooling

Heating

Outdoor unit

Cooling

Heating

Outdoor air unit

Cooling

Discharge

Outside DBT

WBT

Heating

Discharge

Outside

Required capacity

Unit ☒ kW ☐ kBtu/h

Indoor unit

TC

SC

HC

Safety factor %

Reset

OK Cancel

Когато са въведени “Температура/ Мощност/Защитен фактор”, се отразява на екран “Вътрешно тяло”



Estimated capacity condition

Indoor temperature

Outdoor temp.

Safety factor

Update

| Qty | RC C (kW) | RC H (kW) | Est TC (kW) | Est SC (kW) | Est HC (kW) | WxHxD (mm) | Weight (kg) | Airflow (l/s) | Sound (dB) |
|------|-----------|-----------|-------------|-------------|-------------|-------------|-------------|---------------|------------|
| 1.1 | 1.3 | 1.3 | | | | 245x570x570 | 15 | 147.2 | 34 |
| 1.1 | 1.3 | 1.3 | | | | 245x570x570 | 14.5 | 147.2 | 34 |
| 2.2 | 2.6 | 2.6 | | | | 245x570x570 | 15 | 150 | 34 |
| 2.8 | 3.2 | 3.2 | | | | 245x570x570 | 15 | 152.7 | 35 |
| 3.8 | 4.1 | 4.1 | | | | 245x570x570 | 15 | 166.6 | 37 |
| 4.5 | 5.0 | 5.0 | | | | 245x570x570 | 15 | 168.8 | 38 |
| 5.8 | 6.3 | 6.3 | | | | 245x570x570 | 17 | 197.2 | 41 |
| 7.1 | 8.0 | 8.0 | | | | 245x570x570 | 17 | 206.1 | 50 |
| 5.8 | 6.3 | 6.3 | | | | 240x940x940 | 22 | 319.4 | 30 |
| 7.1 | 8.0 | 8.0 | | | | 240x940x940 | 22 | 305.5 | 38 |
| 9.0 | 10.0 | 10.0 | | | | 280x840x840 | 27 | 444.4 | 40 |
| 10.0 | 11.2 | 11.2 | | | | 280x840x840 | 27 | 456.1 | 43 |
| 11.2 | 12.5 | 12.5 | | | | 200x940x940 | 27 | 500 | 44 |
| 12.5 | 14.0 | 14.0 | | | | 280x840x840 | 27 | 527.7 | 48 |
| 14.0 | 16.0 | 16.0 | | | | 280x840x840 | 27 | 555.5 | 47 |
| 5.8 | 6.3 | 6.3 | | | | 200x940x940 | 20.5 | 294.4 | 30 |
| 7.1 | 8.0 | 8.0 | | | | 280x840x840 | 26.5 | 394.4 | 38 |
| 9.0 | 10.0 | 10.0 | | | | 280x840x840 | 26.5 | 400 | 38 |
| 10.0 | 11.2 | 11.2 | | | | 280x840x840 | 29.5 | 400 | 39 |
| 11.2 | 12.5 | 12.5 | | | | 200x940x940 | 29.5 | 450 | 41 |
| 12.5 | 14.0 | 14.0 | | | | 280x840x840 | 29.5 | 505.5 | 44 |
| 14.0 | 16.0 | 16.0 | | | | 280x840x840 | 29.5 | 556.6 | 47 |
| 5.8 | 6.3 | 6.3 | | | | 200x940x940 | 20.5 | 294.4 | 30 |

Input new indoor unit

Name

Comments

Model

☐ Manual selection

Type

Compact cassette

Model

Design criteria

Cooling

DBT

RH %

Required capacity

TC

SC

Heating

DBT

Required capacity

HC

Cancel Add

Input new indoor unit

Name

Comments

Model

☐ Manual selection

Type

Compact cassette

Model

Airflow level

High

RC

Wired RC(Touch)

Options

Design criteria

Cooling

DBT

RH %

Required capacity

TC

SC

Heating

DBT

Required capacity

HC

Additional information

Room setting

Cancel Add

Input new DX kit - indoor unit

Name

Comments

Model Selection

☒ Cooling and Heating ☐ Cooling only ☐ Heating Only

DX kit selection information input

Other unit

Head Not In Use

Model name

Indoor unit

Heating

Rated HC

DBT

Heat exchanger capacity

cm3

960

Input range

1 - 4150

Select picture

Model

UTY-VDX

UTP-VX30A

RC

Wired RC(Touch)

Additional information

Room setting

Конфигурация по подразбиране (2/2)

Когато са въведени “Температура/ Мощност/Защитен фактор”, се отразява на екран “Вътрешно тяло”

Default configuration

| | | | |
|--------------------|--|--------------------------|--|
| Temperature | | Required capacity | |
| Unit | <input checked="" type="radio"/> C <input type="radio"/> F | Unit | <input checked="" type="radio"/> kW <input type="radio"/> kBTU/h |
| Indoor unit | | Indoor unit | |
| Cooling | 27 80.6 | TC | 0.5 2 |
| Heating | 20 68 | SC | 0.5 2 |
| Outdoor unit | | HC | 0.5 2 |
| Cooling | 35 95 | | |
| Heating | 7 44.6 | Safety factor | % 50 |

Outdoor air unit

Cooling

Discharge 18 (C) 64 (F)

Outside DBT 33 91.4

WBT 28.0 82.4

Heating

Discharge 25 (C) 77 (F)

Outside 0 32

Reset

OK Cancel

Input new outdoor air unit

Name OutAir1

Comments

Model

Airflow rate and static pressure 1080m3/h 50-185Pa

Model ARD0954GTAH

RC Wired RC(Touch)

Cooling

Discharge DBT/WBT 18 (C)

Outside DBT C 33.0

RH % 67.1

Capacity kW 14.4

Heating

Discharge DBT 25 (C)

Outside DBT C 0

Capacity kW 8.9

Additional information

Room setting

Cancel Add

Input new DX kit - outdoor air unit

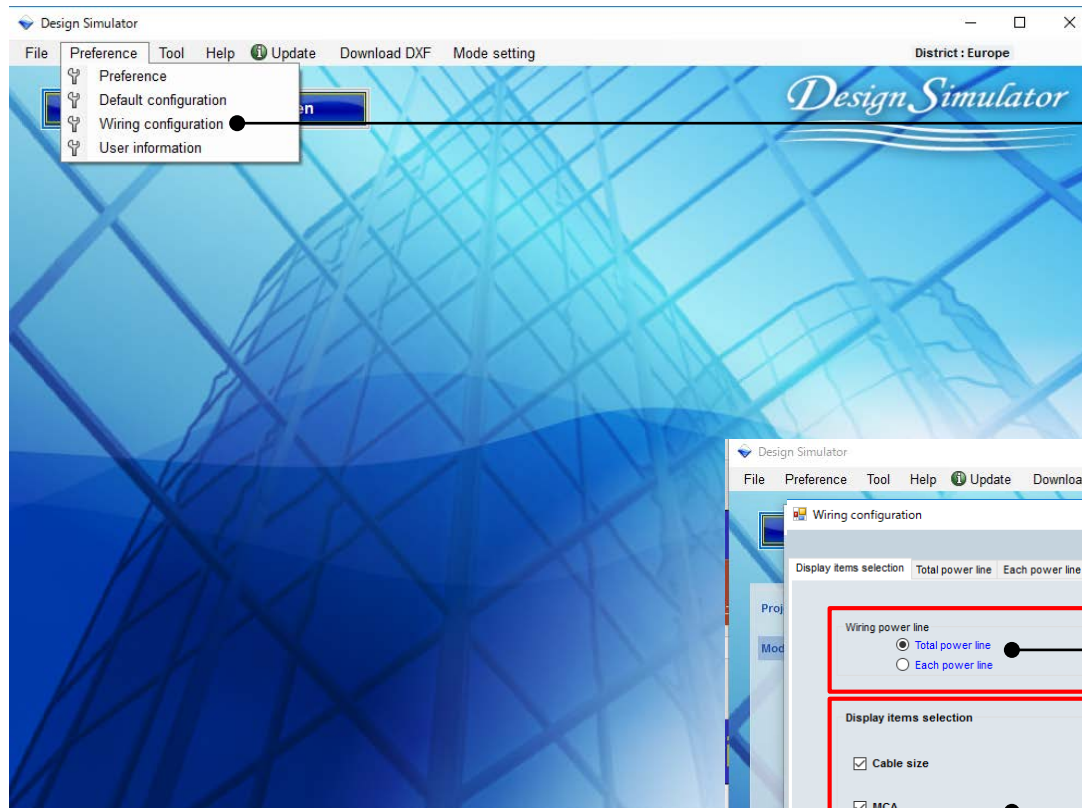
Name DX1

Comments

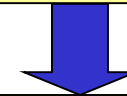
Model Selection ☒ Cooling and Heating ☐ Cooling only ☐ Heating Only

DX kit selection information input

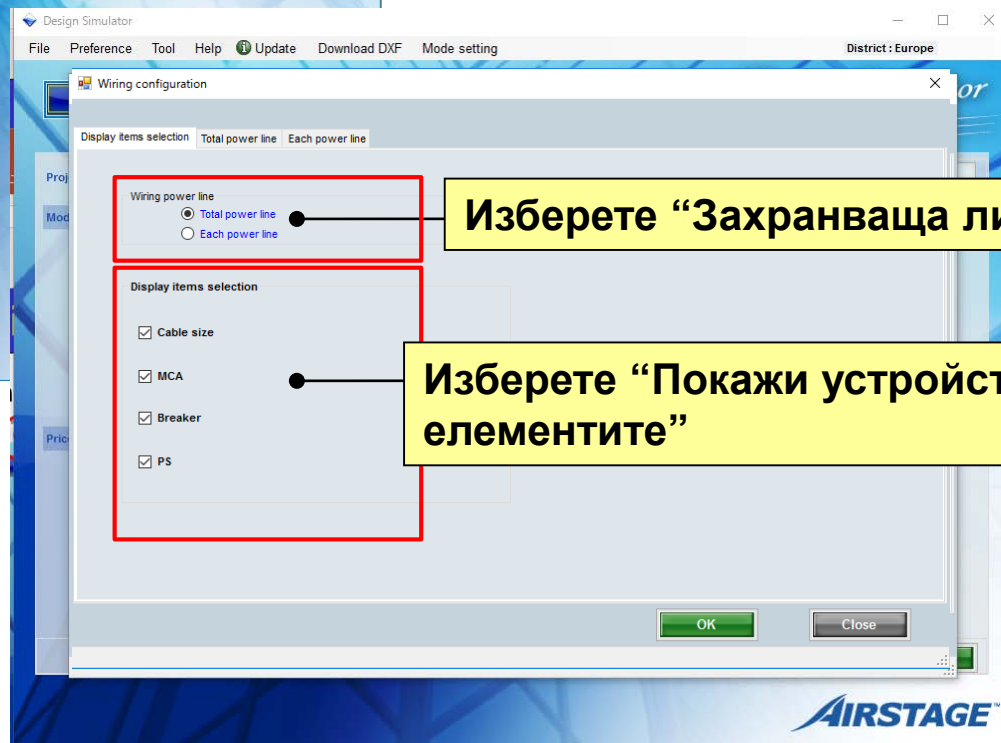
| | | | |
|------------------------|--------------------|-------------------------|------------------|
| Other unit | Head Not In Use | Model name | Outdoor air unit |
| Cooling | | Heating | |
| Rated TC kW 5.1 | | Rated HC kW 5.7 | |
| Discharge | | Discharge DBT | |
| DBT C 18 | | C 25 | |
| WBT C 17.5 | | Outside DBT | |
| C 33.0 | | C 0 | |
| RH % 67.1 | | Heat exchanger capacity | |
| | | cm3 960 | |
| Model | UTY-VDXG UTP-VX30A | Input range | 1 - 3950 |
| RC | Wired RC(Touch) | Select picture | |
| Additional information | | | |
| Room setting | | | |



Изберете “Кабелно трасе”



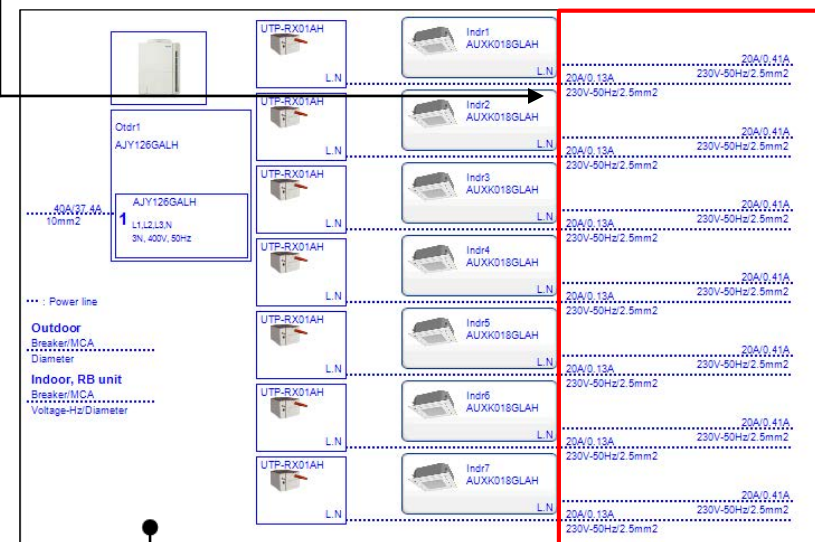
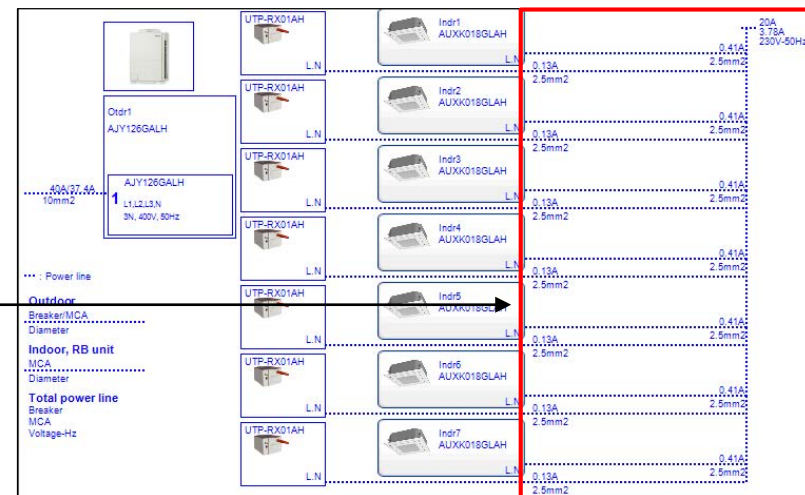
Отваря “Кабелно трасе”



Изберете “Захранваща линия”

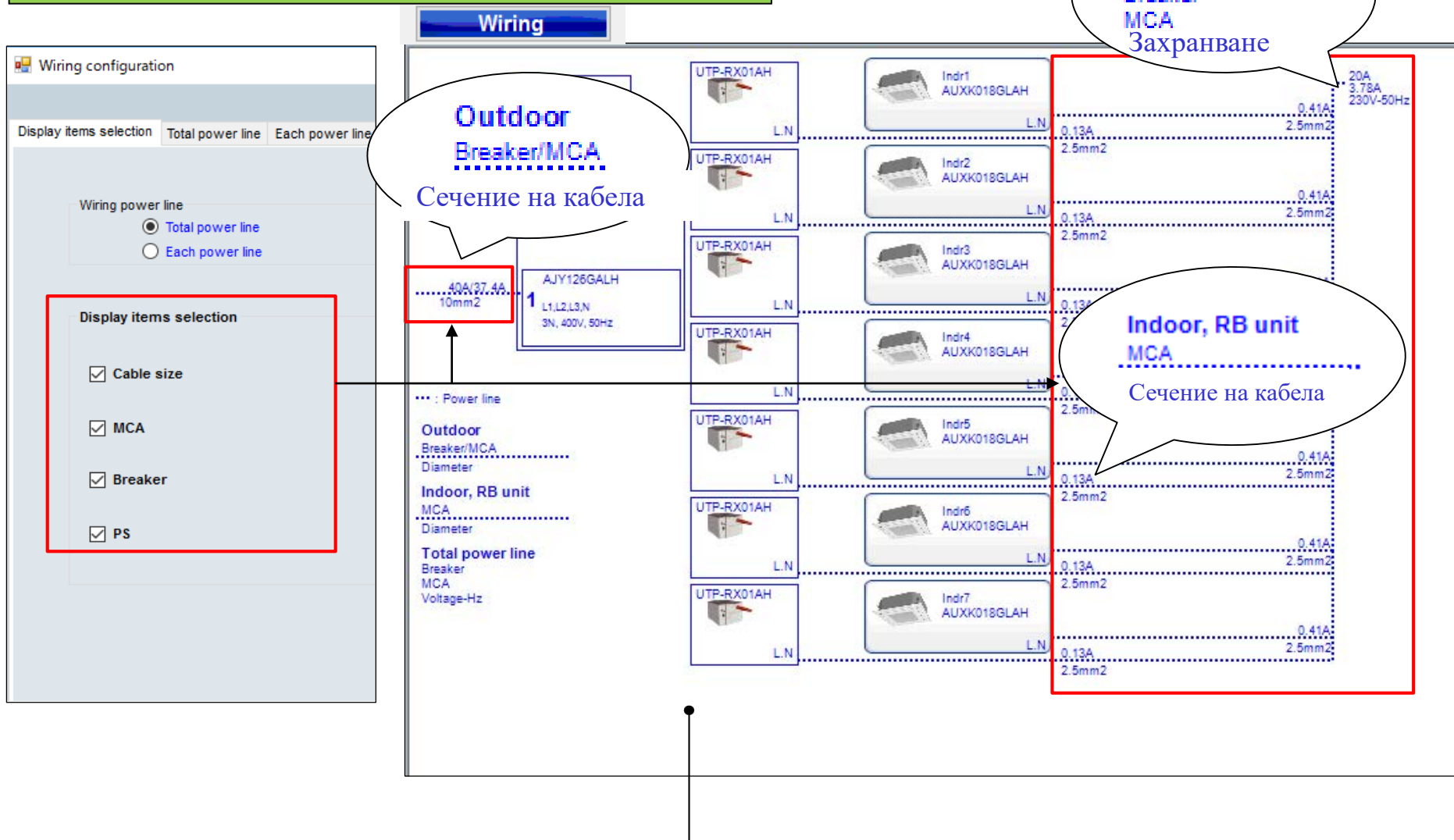
Изберете “Покажи устройствата елементите”

Wiring



Може да изберете “Общо” или “единично” показване на “Захранваща линия”

Покажи устройствата елементите (2/2)



Устройствата в “Кабелно трасе” могат да бъдат показани или скрити

Общо кабелно трасе (1/2)

Wiring configuration

Display items selection Total power line Each power line

Изберете “тип VRF система”

Въведете “Прекъсвач”

Въведете “Ограничение на всички предпазители”

Изберете “Прекъсвач”

Въведете “Захранване”

Въведете “Сечение на кабела”

Въведете “Кабел вън.тяло-разпр.кутия”

Въведете “Кабел разпр.кутия-разпр.кутия”

Reset

Total power line

VRF system

Type V-II Heat Recovery space saving combination

Breaker 20 A

Limit of total MCA 15 A

Earth leakage circuit breaker 30 mA

PS 230V-50Hz

Small system

Cable size 2.5mm2

PS 200V-50Hz

8 Room Multi System

Cable size outdoor-branch box 1.5mm2

Cable size branch box-branch box 1.5mm2

OK Close

Wiring configuration

Display items selection | Total power line | Each power line

Total power line

VRF system

Type: VR-II Heat Recovery space saving combination

Breaker: 20 A

Limit of total MCA: 15 A

Earth leakage circuit breaker: 30 mA

PS: 230V-50Hz

8 Rooms Multi System

Cable size outdoor-branch box: 1.5mm2

Cable size branch box-branch box: 1.5mm2

Reset

OK Close

Wiring

Indr1
AUXK018GLAH
L.N. 0.13A 2.5mm²

Indr2
AUXK018GLAH
L.N. 0.13A 2.5mm²

0.41A 2.5mm²

20A
3.78A
230V-50Hz

[illegible]

“Общо кабелно трасе” може да се настрои за всеки тип 8-стаен мулти

Единично кабелно трасе (1/2)

Wiring configuration

Display items selection Total power line Each power line

Series All Unit All

Изберете "тип VRF система"

Въведете "Сечение на кабел"

Въведете "Прекъсвач"

Въведете "Захранване"

Reset

| Series | Unit | Type | Model | MCA (A) | Cable size | Breaker (A) | PS |
|--------|---------|--------------------------------|------------|---------|------------|-------------|----------------|
| FM | Outdoor | 8 Room Multi System | AOYG45LBT8 | 26.5 | 6.0mm2 | 32 | 1φ, 230V, 50Hz |
| FM | Indoor | Compact cassette | AUYG07LVLA | 0.19 | 2.5mm2 | 0 | 200V-50Hz |
| FM | Indoor | Compact cassette | AUYG09LVLA | 0.19 | 2.5mm2 | 0 | 200V-50Hz |
| FM | Indoor | Floor | AGYG09LVCA | 0.19 | 2.5mm2 | 0 | 200V-50Hz |
| FM | Indoor | Floor | AGYG12LVCA | 0.23 | 2.5mm2 | 0 | 200V-50Hz |
| FM | Indoor | Floor | AGYG14LVCA | 0.25 | 2.5mm2 | 0 | 200V-50Hz |
| FM | Indoor | Floor/ceiling | ABYG14LVTA | 0.26 | 2.5mm2 | 0 | 200V-50Hz |
| FM | Indoor | Slim duct(Drain pump internal) | ARYG07LLTA | 0.41 | 2.5mm2 | 0 | 200V-50Hz |
| FM | Indoor | Slim duct(Drain pump internal) | ARYG09LLTA | 0.38 | 2.5mm2 | 0 | 200V-50Hz |
| FM | Indoor | Wall mounted | ASYG07LJCA | 0.17 | 2.5mm2 | 0 | 200V-50Hz |
| FM | Indoor | Wall mounted | ASYG09LJCA | 0.19 | 2.5mm2 | 0 | 200V-50Hz |
| FM | Indoor | Wall mounted | ASYG12LJCA | 0.24 | 2.5mm2 | 0 | 200V-50Hz |
| FM | Indoor | Wall mounted | ASYG18LFCA | 0.41 | 2.5mm2 | 0 | 200V-50Hz |
| FM | Indoor | Wall mounted | ASYG24LFCA | 0.66 | 2.5mm2 | 0 | 200V-50Hz |
| FM | Indoor | Wall mounted(Slim) | ASYG07LUCA | 0.16 | 2.5mm2 | 0 | 200V-50Hz |
| FM | Indoor | Wall mounted(Slim) | ASYG09LUCA | 0.18 | 2.5mm2 | 0 | 200V-50Hz |
| FM | Indoor | Wall mounted(Slim) | ASYG12LUCA | 0.21 | 2.5mm2 | 0 | 200V-50Hz |
| FM | Indoor | Wall mounted(Slim) | ASYG14LUCA | 0.25 | 2.5mm2 | 0 | 200V-50Hz |

OK Close

Единично кабелно трасе (2/2)

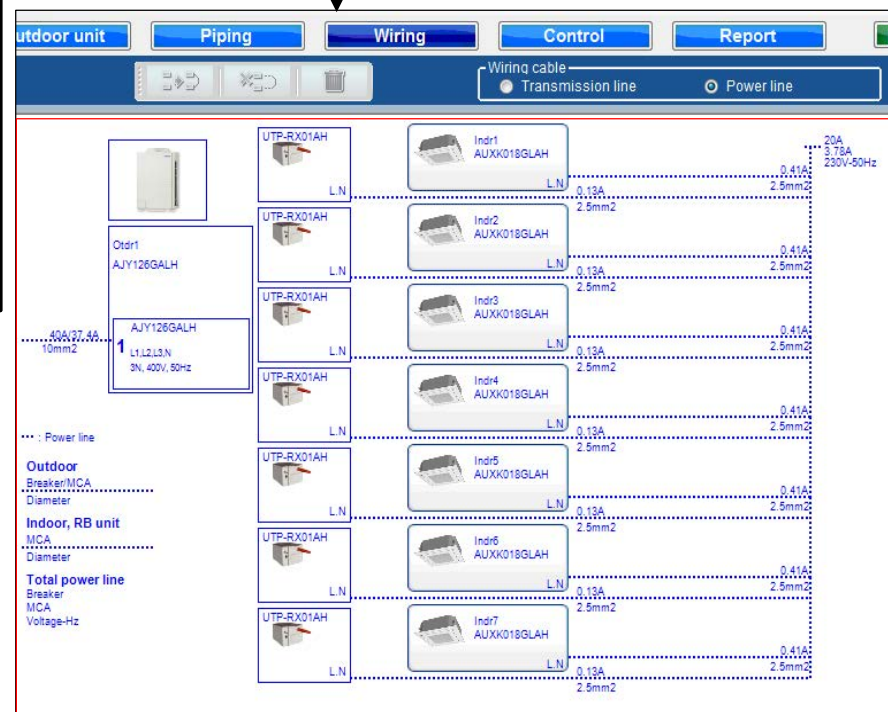
Wiring configuration

Display items selection Total power line Each power line

Series All Unit All Reset

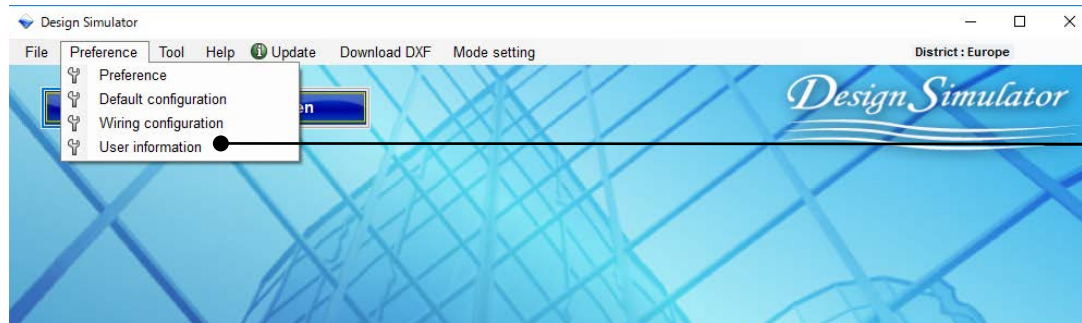
| Series | Unit | Type | Model | MCA (A) | Cable size | Breaker (A) | PS |
|--------|---------|--------------------------------|------------|---------|--------------------|-------------|----------------|
| FM | Outdoor | 8 Rooms Multi System | AOYG45LBT8 | 26.5 | 6.0mm ² | 32 | 1φ, 230V, 50Hz |
| FM | Indoor | Compact cassette | AUYG07LVLA | 0.19 | 2.5mm ² | 0 | 200V-50Hz |
| FM | Indoor | Compact cassette | AUYG09LVLA | 0.19 | 2.5mm ² | 0 | 200V-50Hz |
| FM | Indoor | Compact cassette | AUYG12LVLB | 0.24 | 2.5mm ² | 0 | 200V-50Hz |
| FM | Indoor | Compact cassette | AUYG14LVLB | 0.28 | 2.5mm ² | 0 | 200V-50Hz |
| FM | Indoor | Compact cassette | AUYG18LVLB | 0.38 | 2.5mm ² | 0 | 200V-50Hz |
| FM | Indoor | Floor | AGYG09LVCA | 0.19 | 2.5mm ² | 0 | 200V-50Hz |
| FM | Indoor | Floor | AGYG12LVCA | 0.23 | 2.5mm ² | 0 | 200V-50Hz |
| FM | Indoor | Floor | AGYG14LVCA | 0.25 | 2.5mm ² | 0 | 200V-50Hz |
| FM | Indoor | Floor/ceiling | ABYG14LVTA | 0.26 | 2.5mm ² | 0 | 200V-50Hz |
| FM | Indoor | Floor/ceiling | ABYG18LVTB | 0.45 | 2.5mm ² | 0 | 200V-50Hz |
| FM | Indoor | Slim duct(Drain pump internal) | ARYG07LLTA | 0.41 | 2.5mm ² | 0 | 200V-50Hz |
| FM | Indoor | Slim duct(Drain pump internal) | ARYG09LLTA | 0.38 | 2.5mm ² | 0 | 200V-50Hz |
| FM | Indoor | Slim duct(Drain pump internal) | ARYG12LLTB | 0.44 | 2.5mm ² | 0 | 200V-50Hz |
| FM | Indoor | Slim duct(Drain pump internal) | ARYG14LLTB | 0.64 | 2.5mm ² | 0 | 200V-50Hz |
| FM | Indoor | Slim duct(Drain pump internal) | ARYG18LLTB | 0.55 | 2.5mm ² | 0 | 200V-50Hz |
| FM | Indoor | Wall mounted | ASYG07LJCA | 0.17 | 2.5mm ² | 0 | 200V-50Hz |
| FM | Indoor | Wall mounted | ASYG09LJCA | 0.19 | 2.5mm ² | 0 | 200V-50Hz |

OK Close

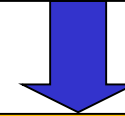


Показаната стойност на “кабелно трасе” може да се смени в зависимост от модела
“Прекъсвач (A)” на вътрешното тяло не може да се смени

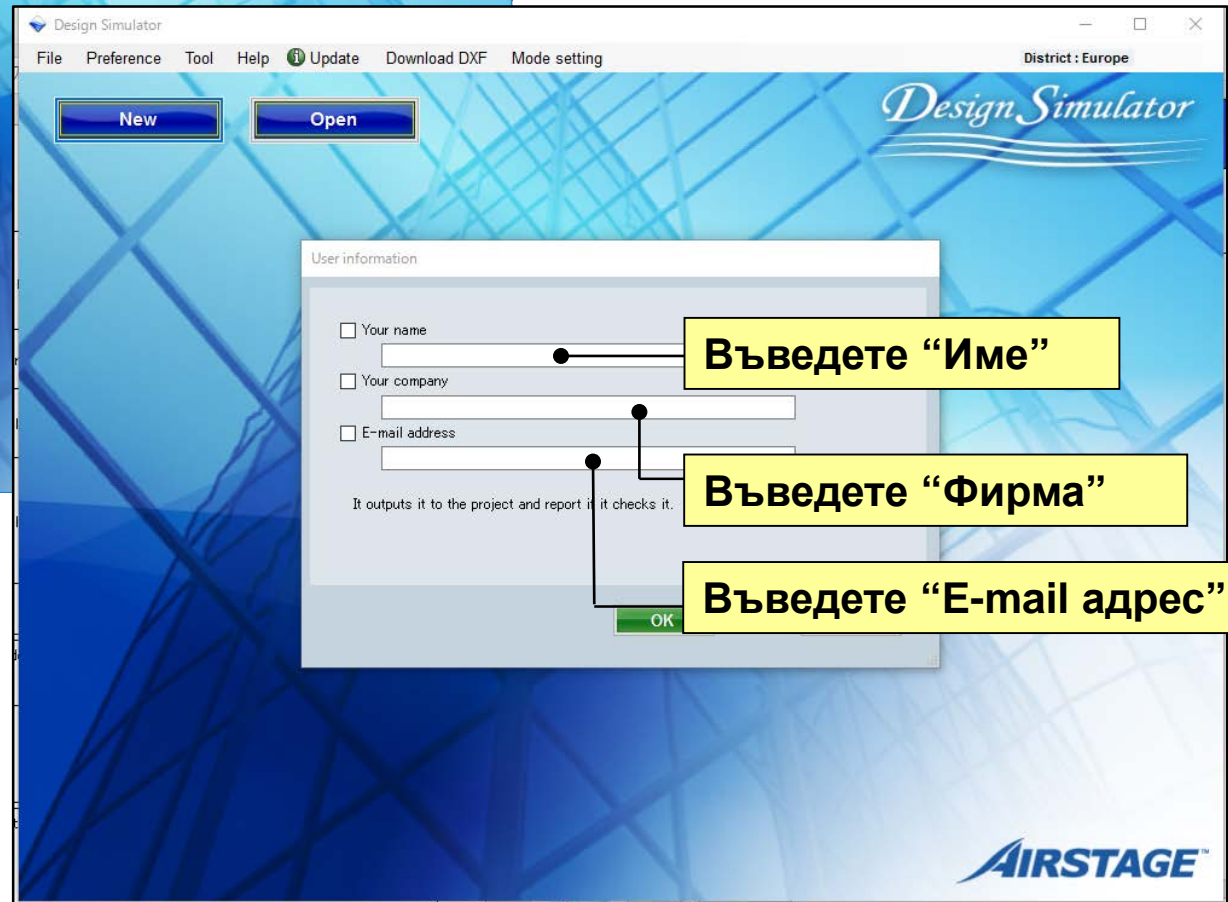
Настройка (информация за потребителя) *Дизайн симулатор*



Изберете “Потребител”



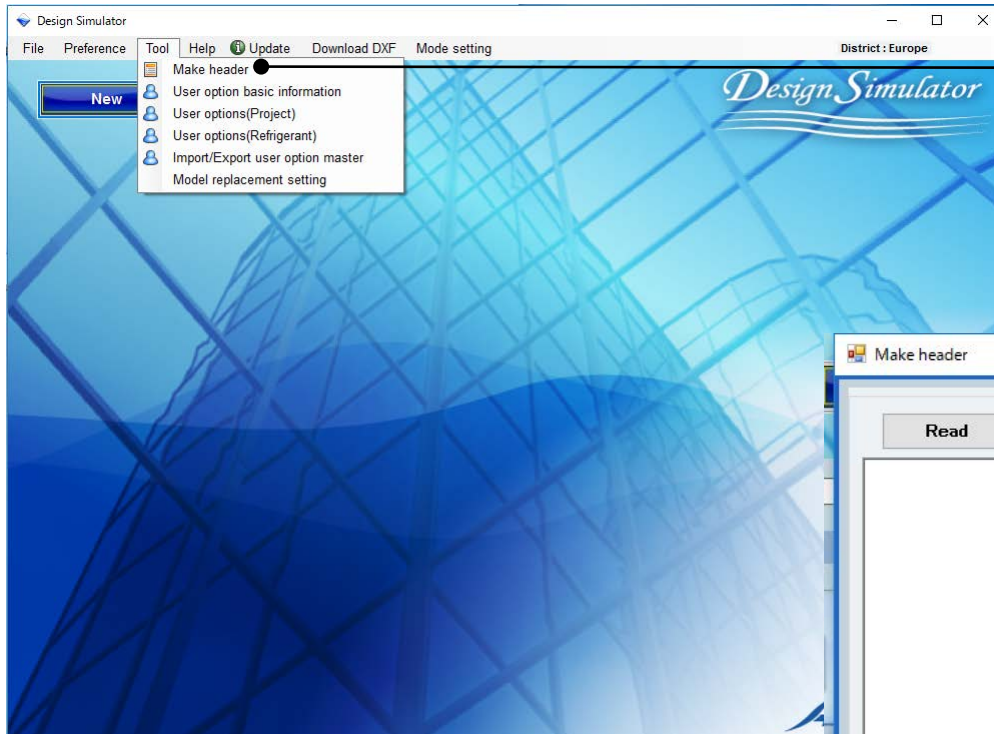
Отваря меню “Потребител”



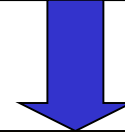
Въведете “Име”

Въведете “Фирма”

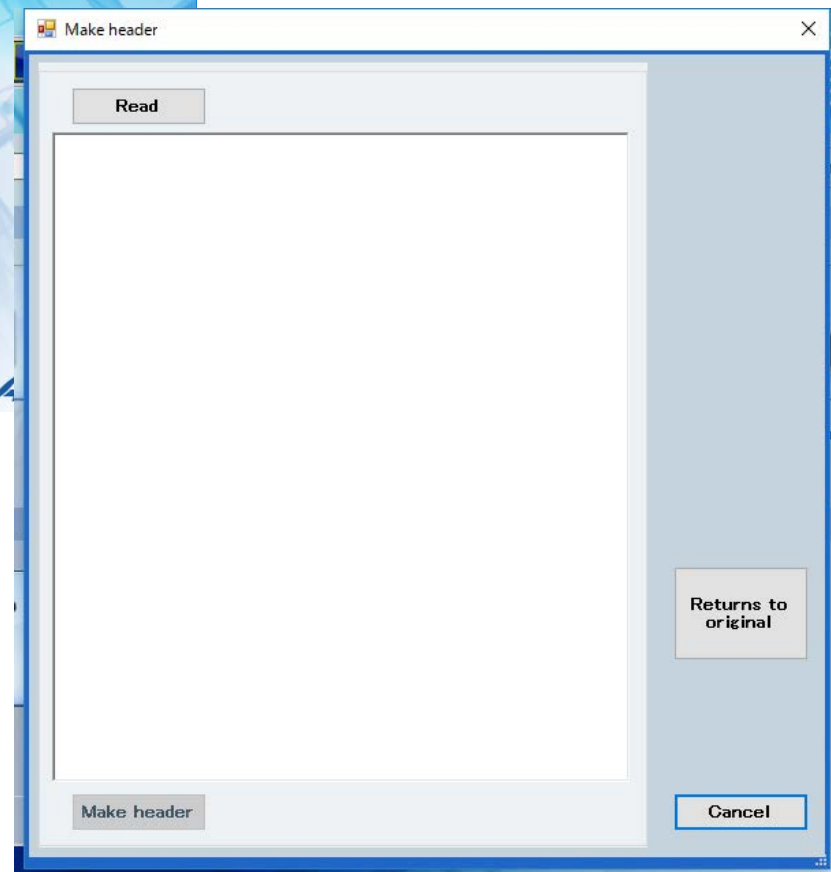
Въведете “E-mail адрес”



Изберете “Създайте заглавие”

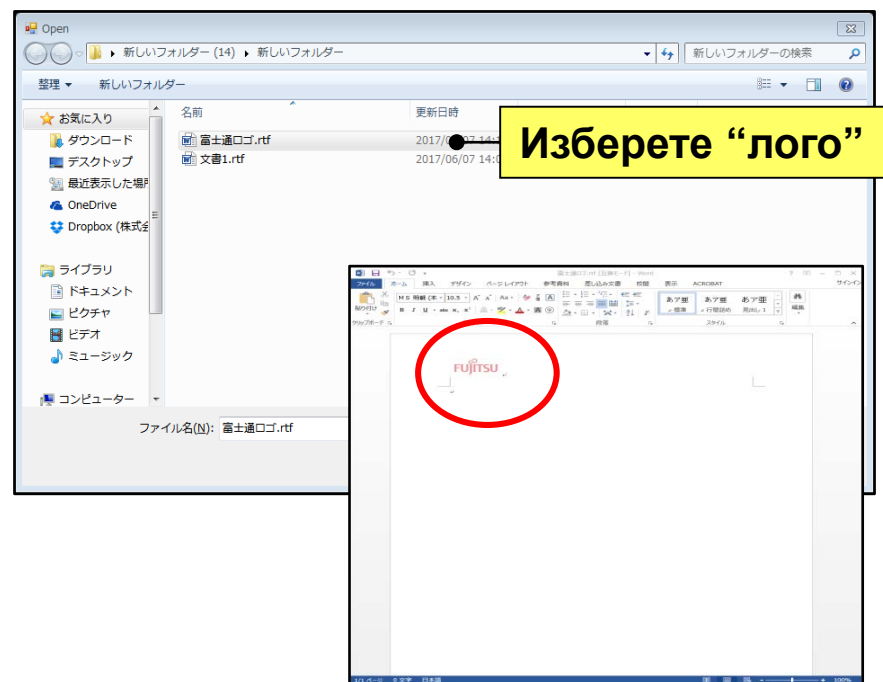
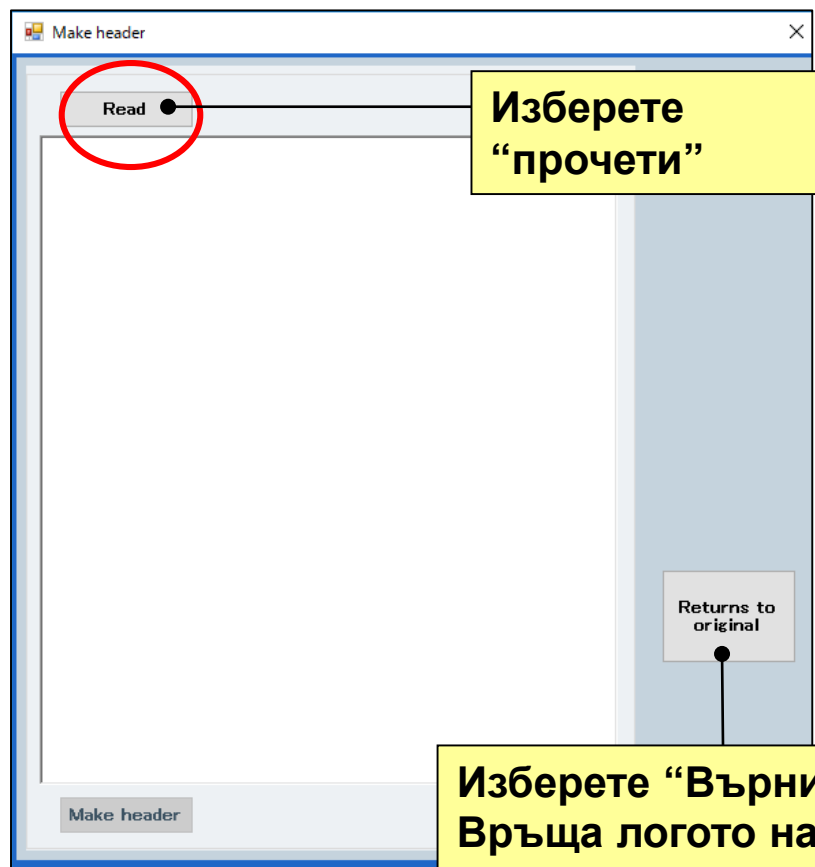


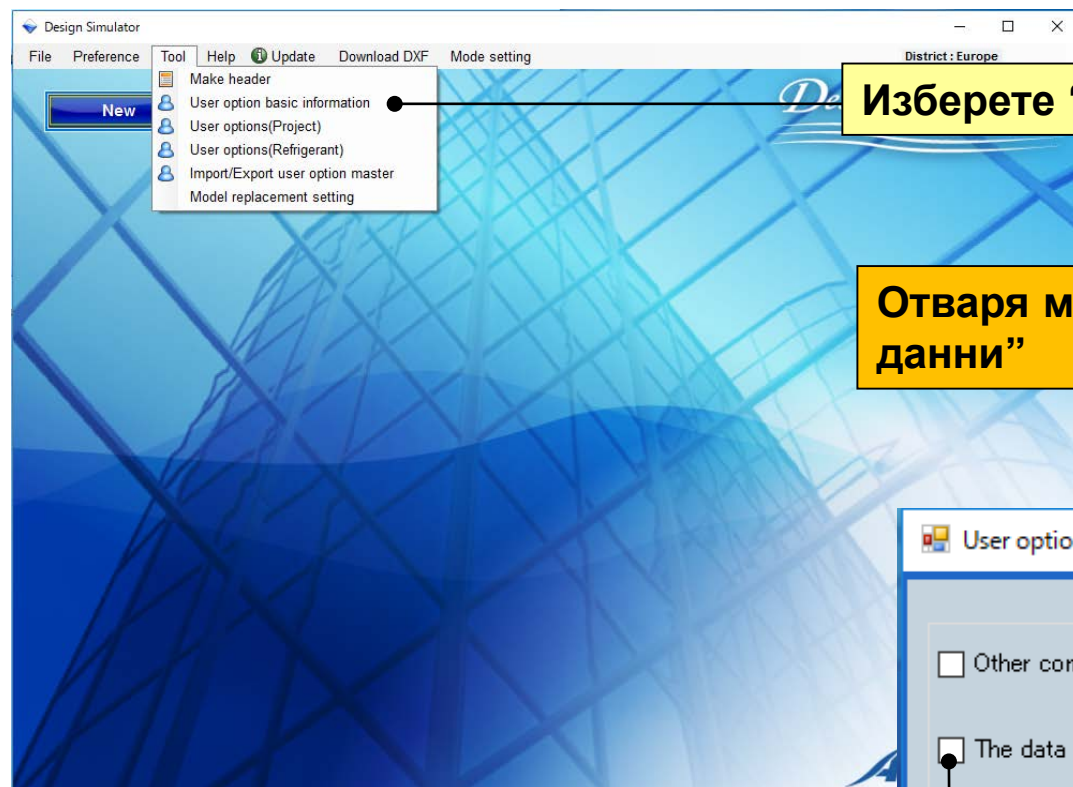
Отваря Създайте заглавие



Създайте заглавие / **лого**

Заглавието на отчета може лесно да се сменя за всяка фирма

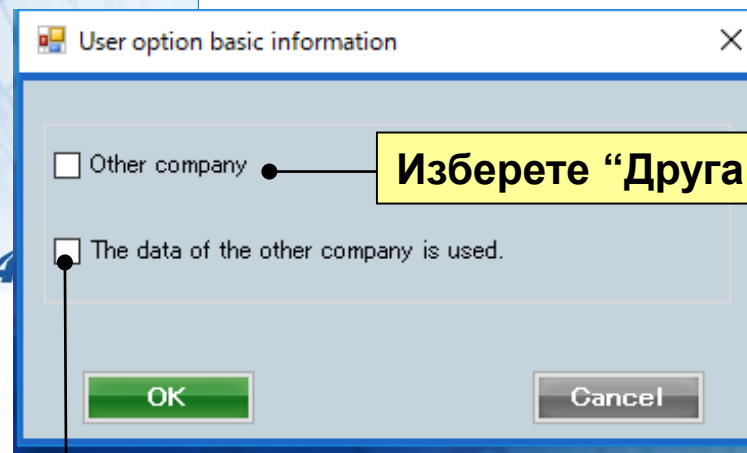




Изберете “Потребителски основни данни”



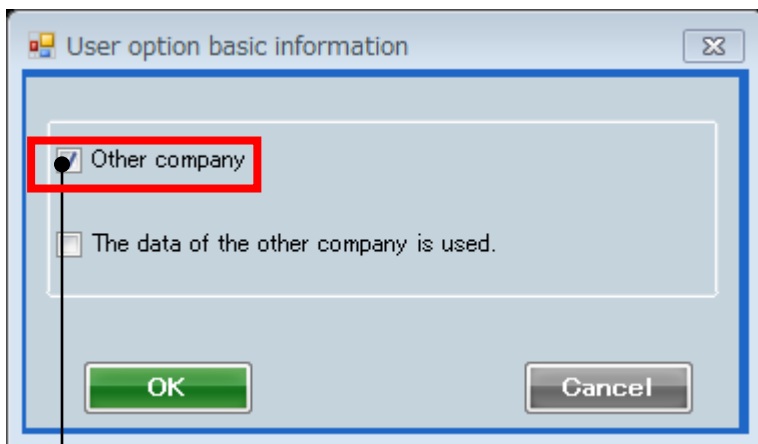
Отваря меню “Потребителски основни данни”



Изберете “Друга фирма”

Изберете “Използвай данни на друга фирма”

Потребителски основни данни



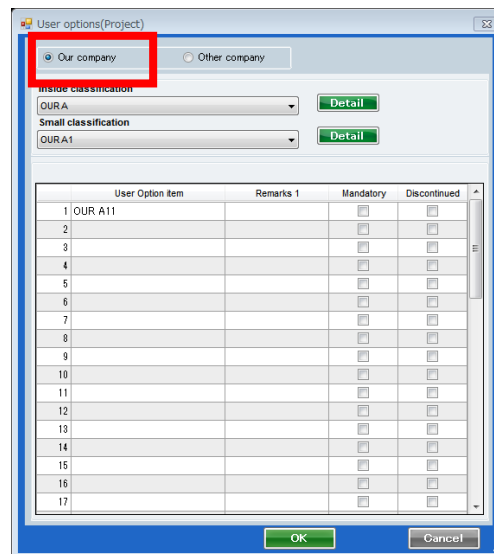
User option basic information

☒ Other company

☐ The data of the other company is used.

OK Cancel

Само регистрираните за вашата фирма данни могат да се избират



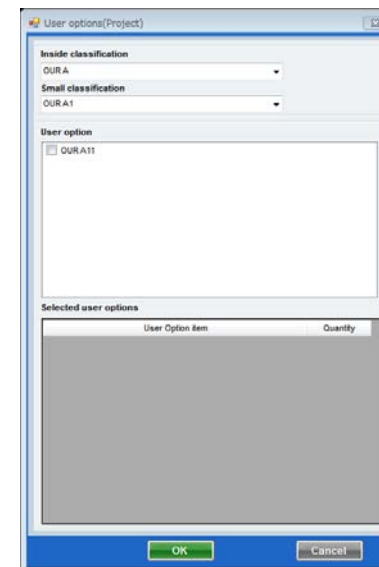
User options(Project)

☒ Our company ☐ Other company

Inside classification: OUR A [Detail]
Small classification: OUR A1 [Detail]

| User Option item | Remarks 1 | Mandatory | Discontinued |
|------------------|-----------|--------------------------|--------------------------|
| 1 OUR A11 | | <input type="checkbox"/> | <input type="checkbox"/> |
| 2 | | <input type="checkbox"/> | <input type="checkbox"/> |
| 3 | | <input type="checkbox"/> | <input type="checkbox"/> |
| 4 | | <input type="checkbox"/> | <input type="checkbox"/> |
| 5 | | <input type="checkbox"/> | <input type="checkbox"/> |
| 6 | | <input type="checkbox"/> | <input type="checkbox"/> |
| 7 | | <input type="checkbox"/> | <input type="checkbox"/> |
| 8 | | <input type="checkbox"/> | <input type="checkbox"/> |
| 9 | | <input type="checkbox"/> | <input type="checkbox"/> |
| 10 | | <input type="checkbox"/> | <input type="checkbox"/> |
| 11 | | <input type="checkbox"/> | <input type="checkbox"/> |
| 12 | | <input type="checkbox"/> | <input type="checkbox"/> |
| 13 | | <input type="checkbox"/> | <input type="checkbox"/> |
| 14 | | <input type="checkbox"/> | <input type="checkbox"/> |
| 15 | | <input type="checkbox"/> | <input type="checkbox"/> |
| 16 | | <input type="checkbox"/> | <input type="checkbox"/> |
| 17 | | <input type="checkbox"/> | <input type="checkbox"/> |

OK Cancel



User options(Project)

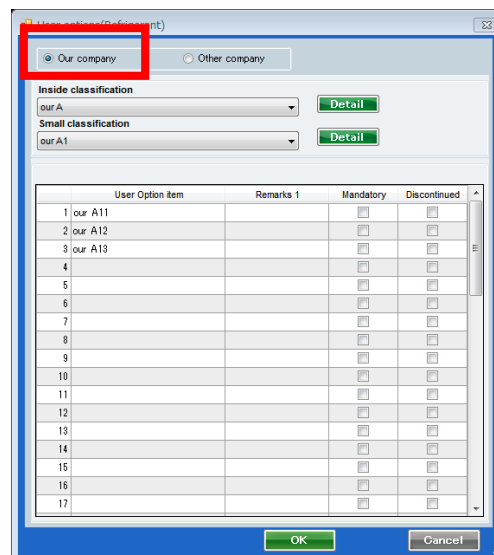
Inside classification: OUR A
Small classification: OUR A1

User option: ☐ OUR A11

Selected user options

| User Option item | Quantity |
|------------------|----------|
|------------------|----------|

OK Cancel



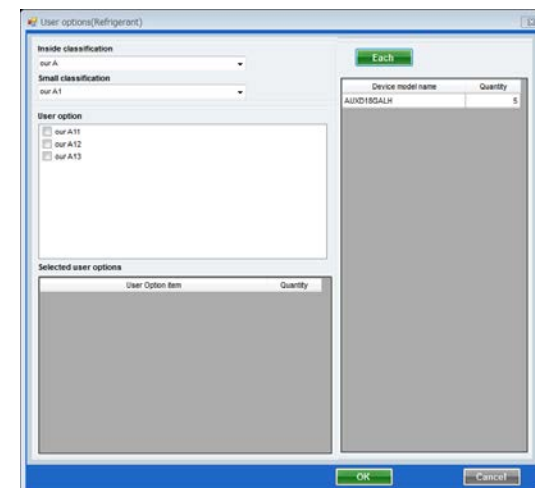
User options(Refrigerant)

☒ Our company ☐ Other company

Inside classification: our A [Detail]
Small classification: our A1 [Detail]

| User Option item | Remarks 1 | Mandatory | Discontinued |
|------------------|-----------|--------------------------|--------------------------|
| 1 our A11 | | <input type="checkbox"/> | <input type="checkbox"/> |
| 2 our A12 | | <input type="checkbox"/> | <input type="checkbox"/> |
| 3 our A13 | | <input type="checkbox"/> | <input type="checkbox"/> |
| 4 | | <input type="checkbox"/> | <input type="checkbox"/> |
| 5 | | <input type="checkbox"/> | <input type="checkbox"/> |
| 6 | | <input type="checkbox"/> | <input type="checkbox"/> |
| 7 | | <input type="checkbox"/> | <input type="checkbox"/> |
| 8 | | <input type="checkbox"/> | <input type="checkbox"/> |
| 9 | | <input type="checkbox"/> | <input type="checkbox"/> |
| 10 | | <input type="checkbox"/> | <input type="checkbox"/> |
| 11 | | <input type="checkbox"/> | <input type="checkbox"/> |
| 12 | | <input type="checkbox"/> | <input type="checkbox"/> |
| 13 | | <input type="checkbox"/> | <input type="checkbox"/> |
| 14 | | <input type="checkbox"/> | <input type="checkbox"/> |
| 15 | | <input type="checkbox"/> | <input type="checkbox"/> |
| 16 | | <input type="checkbox"/> | <input type="checkbox"/> |
| 17 | | <input type="checkbox"/> | <input type="checkbox"/> |

OK Cancel



User options(Refrigerant)

Each

Inside classification: our A
Small classification: our A1

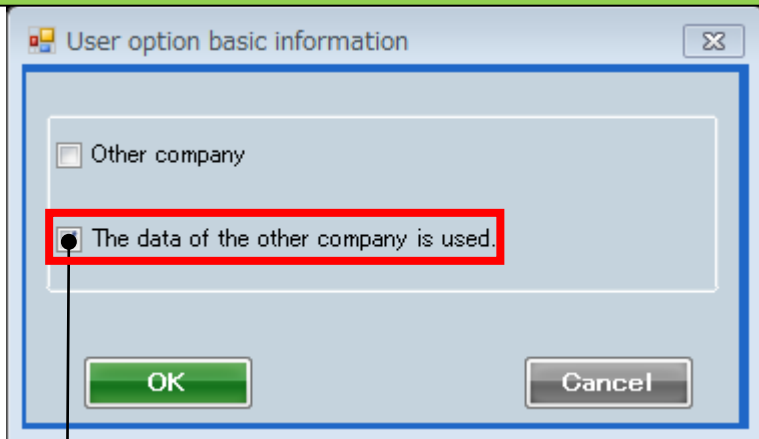
User option: ☐ our A11 ☐ our A12 ☐ our A13

Selected user options

| User Option item | Quantity |
|------------------|----------|
|------------------|----------|

OK Cancel

Потребителски основни данни



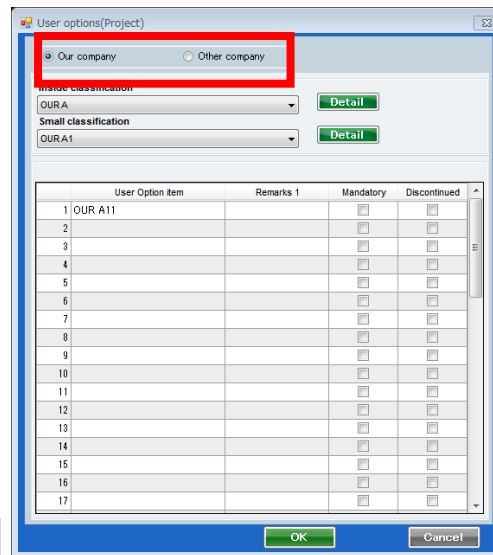
User option basic information

☐ Other company

☒ The data of the other company is used.

OK Cancel

могат да се избират както регистрираните за вашата фирма данни, така и за друга фирма



User options(Project)

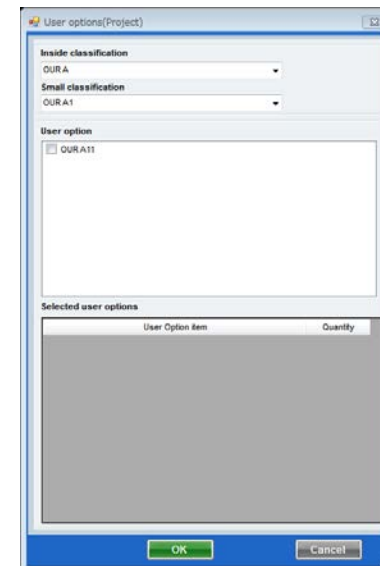
☒ Our company ☐ Other company

Inside classification: OUR A Detail

Small classification: OUR A1 Detail

| User Option Item | Remarks 1 | Mandatory | Discontinued |
|------------------|-----------|--------------------------|--------------------------|
| 1 OUR A11 | | <input type="checkbox"/> | <input type="checkbox"/> |
| 2 | | <input type="checkbox"/> | <input type="checkbox"/> |
| 3 | | <input type="checkbox"/> | <input type="checkbox"/> |
| 4 | | <input type="checkbox"/> | <input type="checkbox"/> |
| 5 | | <input type="checkbox"/> | <input type="checkbox"/> |
| 6 | | <input type="checkbox"/> | <input type="checkbox"/> |
| 7 | | <input type="checkbox"/> | <input type="checkbox"/> |
| 8 | | <input type="checkbox"/> | <input type="checkbox"/> |
| 9 | | <input type="checkbox"/> | <input type="checkbox"/> |
| 10 | | <input type="checkbox"/> | <input type="checkbox"/> |
| 11 | | <input type="checkbox"/> | <input type="checkbox"/> |
| 12 | | <input type="checkbox"/> | <input type="checkbox"/> |
| 13 | | <input type="checkbox"/> | <input type="checkbox"/> |
| 14 | | <input type="checkbox"/> | <input type="checkbox"/> |
| 15 | | <input type="checkbox"/> | <input type="checkbox"/> |
| 16 | | <input type="checkbox"/> | <input type="checkbox"/> |
| 17 | | <input type="checkbox"/> | <input type="checkbox"/> |

OK Cancel



User options(Project)

Inside classification: OUR A

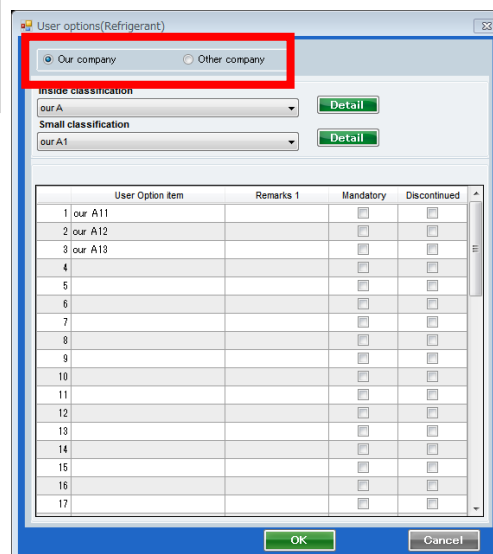
Small classification: OUR A1

User option: ☐ OUR A11

Selected user options

| User Option Item | Quantity |
|------------------|----------|
|------------------|----------|

OK Cancel



User options(Refrigerant)

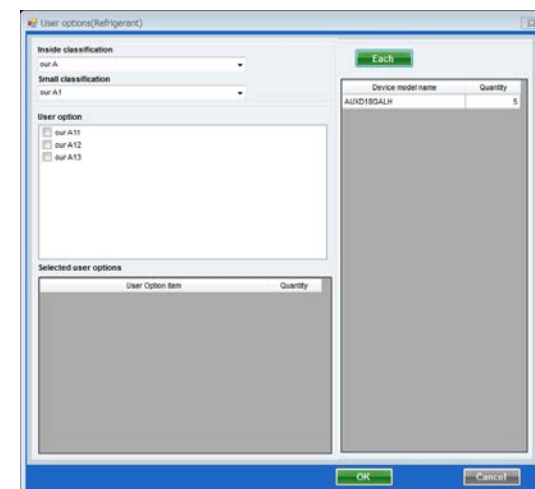
☒ Our company ☐ Other company

Inside classification: our A Detail

Small classification: our A1 Detail

| User Option Item | Remarks 1 | Mandatory | Discontinued |
|------------------|-----------|--------------------------|--------------------------|
| 1 our A11 | | <input type="checkbox"/> | <input type="checkbox"/> |
| 2 our A12 | | <input type="checkbox"/> | <input type="checkbox"/> |
| 3 our A13 | | <input type="checkbox"/> | <input type="checkbox"/> |
| 4 | | <input type="checkbox"/> | <input type="checkbox"/> |
| 5 | | <input type="checkbox"/> | <input type="checkbox"/> |
| 6 | | <input type="checkbox"/> | <input type="checkbox"/> |
| 7 | | <input type="checkbox"/> | <input type="checkbox"/> |
| 8 | | <input type="checkbox"/> | <input type="checkbox"/> |
| 9 | | <input type="checkbox"/> | <input type="checkbox"/> |
| 10 | | <input type="checkbox"/> | <input type="checkbox"/> |
| 11 | | <input type="checkbox"/> | <input type="checkbox"/> |
| 12 | | <input type="checkbox"/> | <input type="checkbox"/> |
| 13 | | <input type="checkbox"/> | <input type="checkbox"/> |
| 14 | | <input type="checkbox"/> | <input type="checkbox"/> |
| 15 | | <input type="checkbox"/> | <input type="checkbox"/> |
| 16 | | <input type="checkbox"/> | <input type="checkbox"/> |
| 17 | | <input type="checkbox"/> | <input type="checkbox"/> |

OK Cancel



User options(Refrigerant)

Inside classification: our A

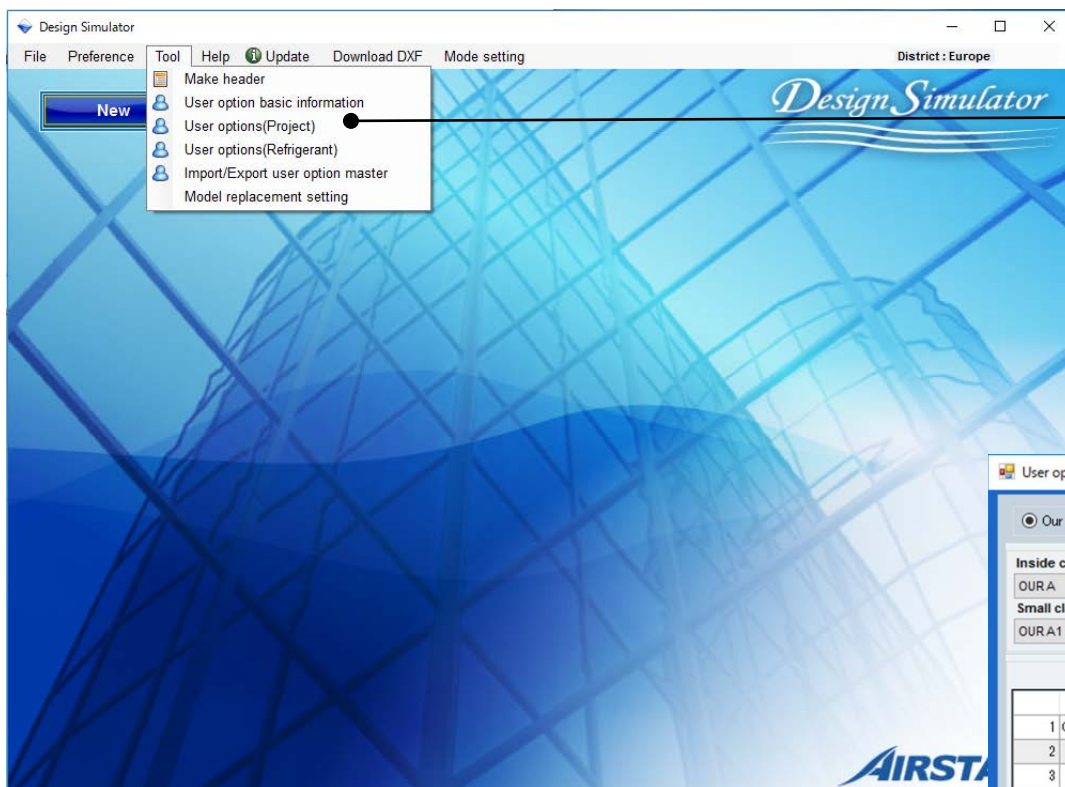
Small classification: our A1

User option: ☐ our A11 ☐ our A12 ☐ our A13

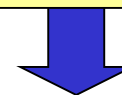
Selected user options

| User Option Item | Quantity |
|------------------|----------|
|------------------|----------|

OK Cancel



Изберете “Потребителска опция (Проект)”



Отваря “Потребителска опция (Проект)”

User options(Project)

☒ Our company ☐ Other company

Inside classification
OUR A

Small classification
OUR A1

| | User Option item | Remarks 1 | Mandatory | Discontinued |
|----|------------------|-----------|--------------------------|-------------------------------------|
| 1 | OUR A | | <input type="checkbox"/> | <input checked="" type="checkbox"/> |
| 2 | | | <input type="checkbox"/> | <input type="checkbox"/> |
| 3 | | | <input type="checkbox"/> | <input type="checkbox"/> |
| 4 | | | <input type="checkbox"/> | <input type="checkbox"/> |
| 5 | | | <input type="checkbox"/> | <input type="checkbox"/> |
| 6 | | | <input type="checkbox"/> | <input type="checkbox"/> |
| 7 | | | <input type="checkbox"/> | <input type="checkbox"/> |
| 8 | | | <input type="checkbox"/> | <input type="checkbox"/> |
| 9 | | | <input type="checkbox"/> | <input type="checkbox"/> |
| 10 | | | <input type="checkbox"/> | <input type="checkbox"/> |
| 11 | | | <input type="checkbox"/> | <input type="checkbox"/> |
| 12 | | | <input type="checkbox"/> | <input type="checkbox"/> |
| 13 | | | <input type="checkbox"/> | <input type="checkbox"/> |
| 14 | | | <input type="checkbox"/> | <input type="checkbox"/> |
| 15 | | | <input type="checkbox"/> | <input type="checkbox"/> |
| 16 | | | <input type="checkbox"/> | <input type="checkbox"/> |
| 17 | | | <input type="checkbox"/> | <input type="checkbox"/> |

Потребителска опция (Проект) (1/2)

User options(Project)

☒ Our company ☐ Other company

Inside classification
OUR A Detail

Small classification
OUR A1 Detail

| | User Option item | Remarks 1 | Mandatory | Discontinued |
|----|------------------|-----------|--------------------------|-------------------------------------|
| 1 | OUR A | | <input type="checkbox"/> | <input checked="" type="checkbox"/> |
| 2 | | | <input type="checkbox"/> | <input type="checkbox"/> |
| 3 | | | <input type="checkbox"/> | <input type="checkbox"/> |
| 4 | | | <input type="checkbox"/> | <input type="checkbox"/> |
| 5 | | | <input type="checkbox"/> | <input type="checkbox"/> |
| 6 | | | <input type="checkbox"/> | <input type="checkbox"/> |
| 7 | | | <input type="checkbox"/> | <input type="checkbox"/> |
| 8 | | | <input type="checkbox"/> | <input type="checkbox"/> |
| 9 | | | <input type="checkbox"/> | <input type="checkbox"/> |
| 10 | | | <input type="checkbox"/> | <input type="checkbox"/> |
| 11 | | | <input type="checkbox"/> | <input type="checkbox"/> |
| 12 | | | <input type="checkbox"/> | <input type="checkbox"/> |
| 13 | | | <input type="checkbox"/> | <input type="checkbox"/> |
| 14 | | | <input type="checkbox"/> | <input type="checkbox"/> |
| 15 | | | <input type="checkbox"/> | <input type="checkbox"/> |
| 16 | | | <input type="checkbox"/> | <input type="checkbox"/> |
| 17 | | | <input type="checkbox"/> | <input type="checkbox"/> |

OK Cancel



Design Simulator

File Preference Tool Help Update Download DXF Mode setting

District : Europe

New Open

Project Name Management Number User option Detail

Model Selection

VRF system 2017/06/07 Previous models

Price quote

Price list Quotation

User options(Project)

Inside classification
OUR A

Small classification
OUR A

User option

selected user options

| User Option item | Quantity |
|------------------|----------|
|------------------|----------|

OK Cancel

Изберете “Исключени”
Избраните опции не се показват в
списъка

Потребителска опция (Проект) (2/2)

User options(Project)

☒ Our company ☐ Other company

Inside classification
OUR A Detail

Small classification
OUR A1 Detail

| | User Option item | Remarks 1 | Mandatory | Discontinued |
|----|------------------|-----------|-------------------------------------|--------------------------|
| 1 | OUR A | | <input checked="" type="checkbox"/> | <input type="checkbox"/> |
| 2 | | | <input type="checkbox"/> | <input type="checkbox"/> |
| 3 | | | <input type="checkbox"/> | <input type="checkbox"/> |
| 4 | | | <input type="checkbox"/> | <input type="checkbox"/> |
| 5 | | | <input type="checkbox"/> | <input type="checkbox"/> |
| 6 | | | <input type="checkbox"/> | <input type="checkbox"/> |
| 7 | | | <input type="checkbox"/> | <input type="checkbox"/> |
| 8 | | | <input type="checkbox"/> | <input type="checkbox"/> |
| 9 | | | <input type="checkbox"/> | <input type="checkbox"/> |
| 10 | | | <input type="checkbox"/> | <input type="checkbox"/> |
| 11 | | | <input type="checkbox"/> | <input type="checkbox"/> |
| 12 | | | <input type="checkbox"/> | <input type="checkbox"/> |
| 13 | | | <input type="checkbox"/> | <input type="checkbox"/> |
| 14 | | | <input type="checkbox"/> | <input type="checkbox"/> |
| 15 | | | <input type="checkbox"/> | <input type="checkbox"/> |
| 16 | | | <input type="checkbox"/> | <input type="checkbox"/> |
| 17 | | | <input type="checkbox"/> | <input type="checkbox"/> |

OK Cancel



Design Simulator

File Preference Tool Help Update Download DXF Mode setting

District : Europe

New Open

Project Name Management Number User option Detail

Model Selection

VRF system 2017/06/07

Previous models

Price quote

Price list Quotation

User options(Project)

Inside classification
OUR A

Small classification
OUR A1

User option

☒ OUR A11

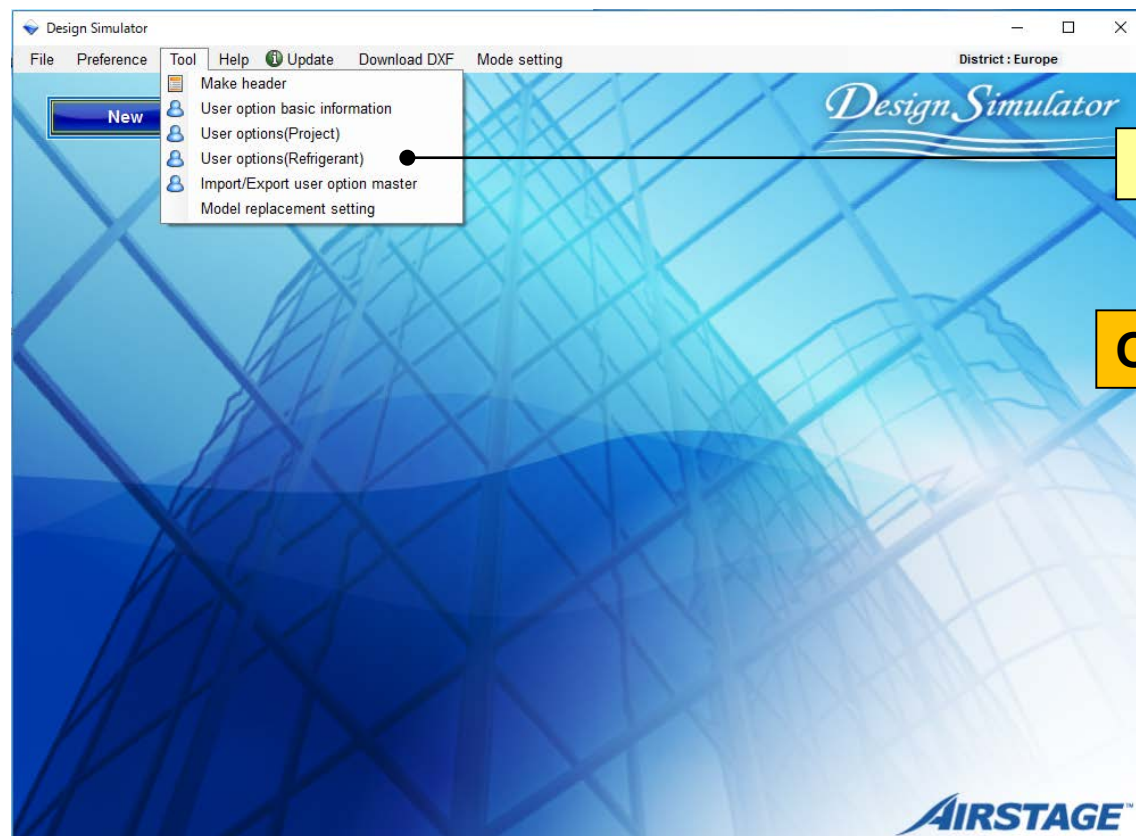
Selected user options

| User Option item | Quantity |
|------------------|----------|
| OUR A11 | 1 |

OK Cancel

Изберете “Задължителен”

Избраните опции винаги се показват в списъка



Изберете “Опция (Хл.агент)”



Отваря “Опция (Хл.агент)”

User options(Refrigerant)

☒ Our company ☐ Other company

Inside classification
A1

Small classification
A11

| | User Option item | Remarks 1 | Mandatory | Discontinued |
|----|------------------|-----------|-------------------------------------|--------------------------|
| 1 | A111 | | <input checked="" type="checkbox"/> | <input type="checkbox"/> |
| 2 | A112 | | <input type="checkbox"/> | <input type="checkbox"/> |
| 3 | A113 | | <input type="checkbox"/> | <input type="checkbox"/> |
| 4 | | | <input type="checkbox"/> | <input type="checkbox"/> |
| 5 | | | <input type="checkbox"/> | <input type="checkbox"/> |
| 6 | | | <input type="checkbox"/> | <input type="checkbox"/> |
| 7 | | | <input type="checkbox"/> | <input type="checkbox"/> |
| 8 | | | <input type="checkbox"/> | <input type="checkbox"/> |
| 9 | | | <input type="checkbox"/> | <input type="checkbox"/> |
| 10 | | | <input type="checkbox"/> | <input type="checkbox"/> |
| 11 | | | <input type="checkbox"/> | <input type="checkbox"/> |
| 12 | | | <input type="checkbox"/> | <input type="checkbox"/> |
| 13 | | | <input type="checkbox"/> | <input type="checkbox"/> |
| 14 | | | <input type="checkbox"/> | <input type="checkbox"/> |
| 15 | | | <input type="checkbox"/> | <input type="checkbox"/> |
| 16 | | | <input type="checkbox"/> | <input type="checkbox"/> |
| 17 | | | <input type="checkbox"/> | <input type="checkbox"/> |

Могат да се регистрират опционалните части, които ще се ползват индивидуално.

Опция (Хл.агент) (1/2)

User options(Refrigerant)

☒ Our company ☐ Other company

Inside classification
A1 Detail

Small classification
A11 Detail

| | User Option item | Remarks 1 | Mandatory | Discontinued |
|----|------------------|-----------|-------------------------------------|--------------------------|
| 1 | A111 | | <input checked="" type="checkbox"/> | <input type="checkbox"/> |
| 2 | A112 | | <input type="checkbox"/> | <input type="checkbox"/> |
| 3 | A113 | | <input type="checkbox"/> | <input type="checkbox"/> |
| 4 | | | <input type="checkbox"/> | <input type="checkbox"/> |
| 5 | | | <input type="checkbox"/> | <input type="checkbox"/> |
| 6 | | | <input type="checkbox"/> | <input type="checkbox"/> |
| 7 | | | <input type="checkbox"/> | <input type="checkbox"/> |
| 8 | | | <input type="checkbox"/> | <input type="checkbox"/> |
| 9 | | | <input type="checkbox"/> | <input type="checkbox"/> |
| 10 | | | <input type="checkbox"/> | <input type="checkbox"/> |
| 11 | | | <input type="checkbox"/> | <input type="checkbox"/> |
| 12 | | | <input type="checkbox"/> | <input type="checkbox"/> |
| 13 | | | <input type="checkbox"/> | <input type="checkbox"/> |
| 14 | | | <input type="checkbox"/> | <input type="checkbox"/> |
| 15 | | | <input type="checkbox"/> | <input type="checkbox"/> |
| 16 | | | <input type="checkbox"/> | <input type="checkbox"/> |
| 17 | | | <input type="checkbox"/> | <input type="checkbox"/> |

OK Cancel

Wiring

File Preference Tool Help Update

Indoor unit Outdoor unit Piping Wiring Control Report Menu

Wiring cable
☒ Transmission line ☐ Power line

Indr1 AUXB04GALH

Ind2 AUXB04GALH

Ind3 AUXB04GALH

User options(Refrigerant)

Inside classification
A1

Small classification
A11

User option
☒ A111
☐ A112
☐ A113

Selected user options

| User Option item | Quantity |
|------------------|----------|
| A111 | 1 |

OK Cancel

Изберете
“Потр.опция”

Изберете “Задължителен”
Маркираните опции винаги се показват за всяка система

Опция (Хл.агент) (2/2)

User options(Refrigerant)

☒ Our company ☐ Other company

Inside classification
A1 Detail

Small classification
A11 Detail

| | User Option item | Remarks 1 | Mandatory | Discontinued |
|----|------------------|-----------|--------------------------|-------------------------------------|
| 1 | A111 | | <input type="checkbox"/> | <input checked="" type="checkbox"/> |
| 2 | A112 | | <input type="checkbox"/> | <input type="checkbox"/> |
| 3 | A113 | | <input type="checkbox"/> | <input type="checkbox"/> |
| 4 | | | <input type="checkbox"/> | <input type="checkbox"/> |
| 5 | | | <input type="checkbox"/> | <input type="checkbox"/> |
| 6 | | | <input type="checkbox"/> | <input type="checkbox"/> |
| 7 | | | <input type="checkbox"/> | <input type="checkbox"/> |
| 8 | | | <input type="checkbox"/> | <input type="checkbox"/> |
| 9 | | | <input type="checkbox"/> | <input type="checkbox"/> |
| 10 | | | <input type="checkbox"/> | <input type="checkbox"/> |
| 11 | | | <input type="checkbox"/> | <input type="checkbox"/> |
| 12 | | | <input type="checkbox"/> | <input type="checkbox"/> |
| 13 | | | <input type="checkbox"/> | <input type="checkbox"/> |
| 14 | | | <input type="checkbox"/> | <input type="checkbox"/> |
| 15 | | | <input type="checkbox"/> | <input type="checkbox"/> |
| 16 | | | <input type="checkbox"/> | <input type="checkbox"/> |
| 17 | | | <input type="checkbox"/> | <input type="checkbox"/> |

OK Cancel

Wiring

File Preference Tool Help Update

Indoor unit Outdoor unit Piping Wiring Control Report Menu

Wiring cable
☒ Transmission line ☐ Power line

User options(Refrigerant)

Inside classification
A1 Detail

Small classification
A11 Detail

User option
☐ A112
☐ A113

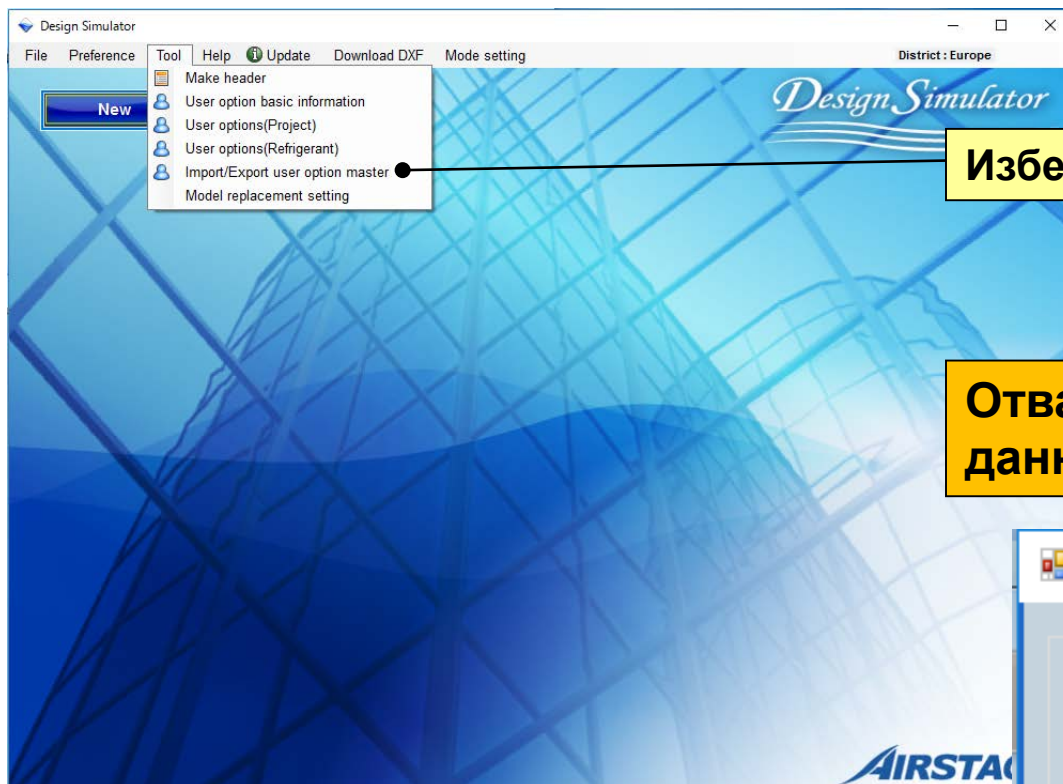
Selected user options

| User Option item | Quantity |
|------------------|----------|
|------------------|----------|

OK Cancel

Изберете
“Потр.опция”

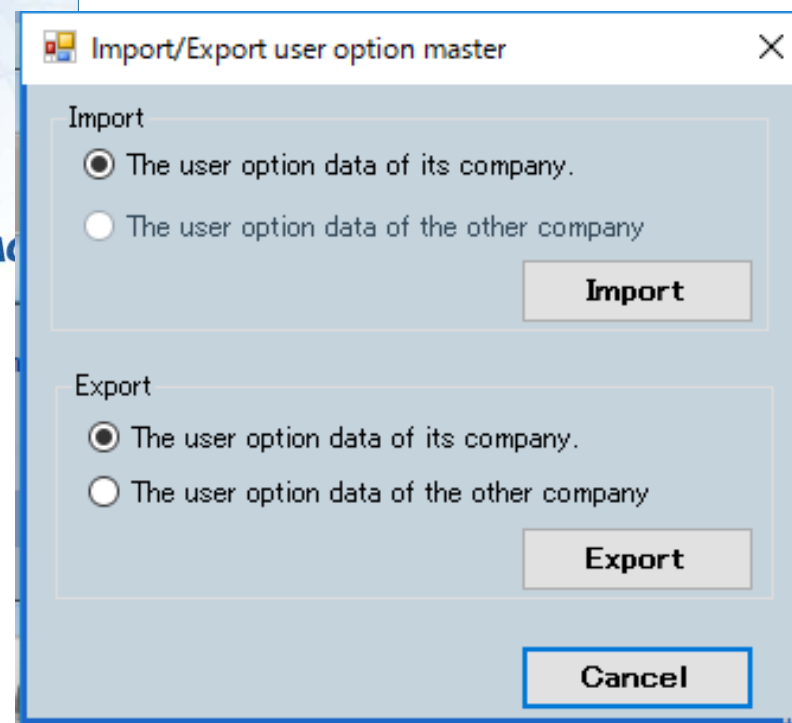
Изберете “Исключен”
Маркираните опции не се показват в списъка



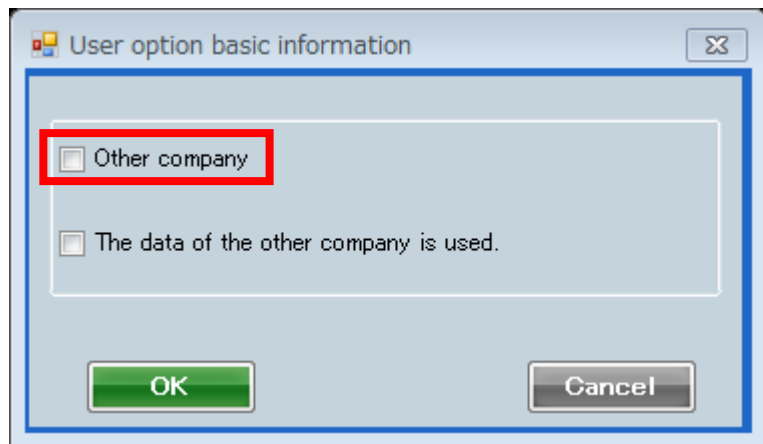
Изберете “Импорт/експорт на опциите”



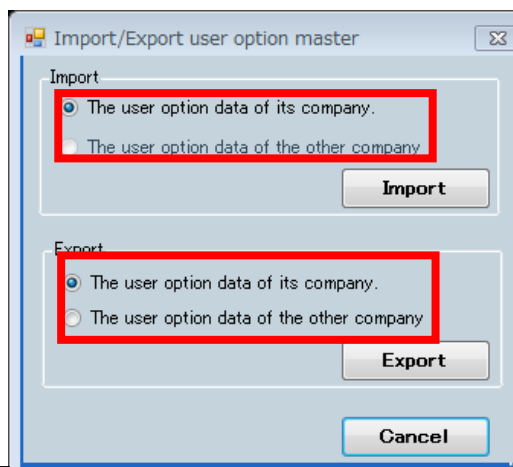
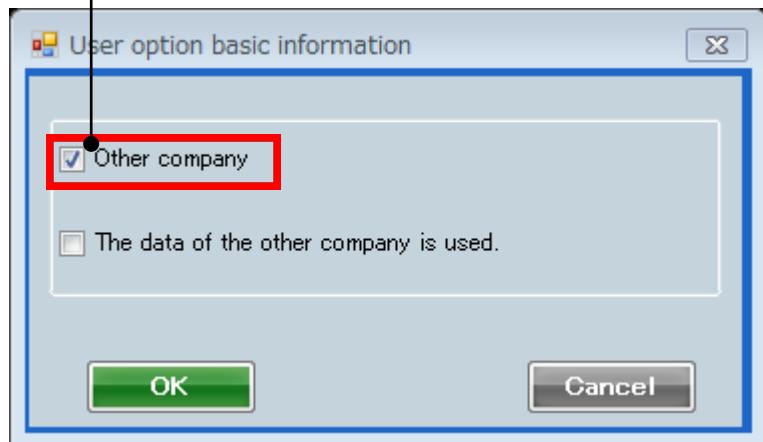
Отваря “Потребителски основни данни”



Импорт/експорт на опциите (1/2)



Изберете “Друга фирма”



Импорт:

Може да се избере само “Данни за потр.опции на фирмата”

Експорт:

Могат да се изберат и двата варианта.



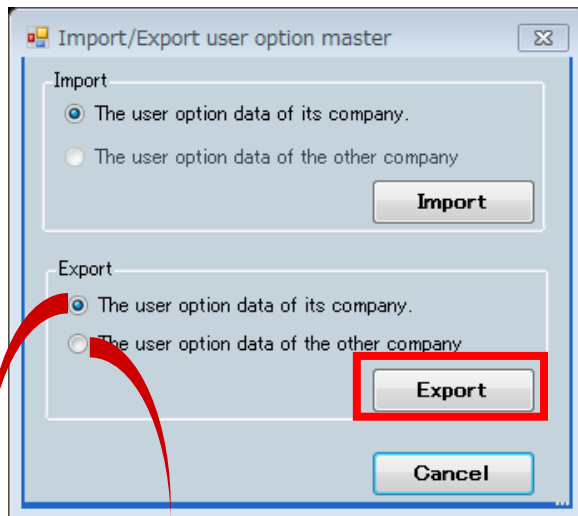
Импорт :

Могат да се изберат и двата варианта.

Експорт :

Може да се избере само “Данни за потр.опции на фирмата”

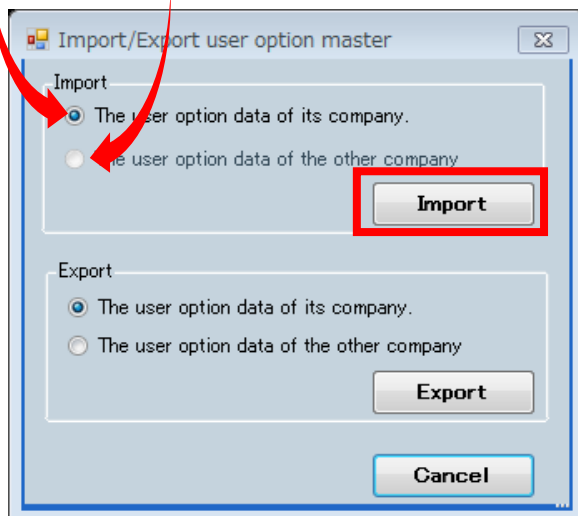
Импорт/експорт на опциите (2/2)



Експорт:

Изберете “Данни за потр.опции на фирмата”
Само регистрираните за вашата фирма данни ще се експортират. (*.uof)

Изберете “Данни за потр.опции на друга фирма”
Само регистрираните за друга фирма данни ще се експортират. (*.uof)



Импорт :

Изберете “Данни за потр.опции на фирмата”
Данните за вашата фирма могат да се импортират. (*.uof)

Изберете “Данни за потр.опции на друга фирма”
Данните за друга фирма могат да се импортират. (*.uof)

Изберете “Настройка за замяна на модела”

Отваря “Настройка за замяна на модела”

Изберете “Импорт”

Изберете “Експорт”

“Сортиране”

“Изчистване”

“Търсене”

“Нов”

**“Добавяне”
“изтриване”**

Table name: Replacement table - 01

Search Model:

Unit: Indoor

| What model (before replacement) | | | | Replace with (after replacement) | | | |
|---------------------------------|-----------|-----------|--------|----------------------------------|------------|-----------|-----------|
| Model | RC C (kW) | RC H (kW) | Unit | Type | Model | RC C (kW) | RC H (kW) |
| INDZ15A | 1.7 | 1.9 | Indoor | Compact cassette | AUXB04GALH | 1.1 | 1.3 |
| INDZ20A | 2.2 | 2.5 | Indoor | Compact cassette | AUXB07GALH | 2.2 | 2.8 |
| INDZ25A | 2.8 | 3.2 | Indoor | Compact cassette | AUXB09GALH | 2.8 | 3.2 |
| INDZ32A | 3.6 | 4.0 | Indoor | Compact cassette | AUXB12GALH | 3.6 | 4.1 |
| INDZ40A | 4.5 | 5.0 | Indoor | Compact cassette | AUXB14GALH | 4.5 | 5.0 |
| INDZ50A | 5.6 | 6.3 | Indoor | Compact cassette | AUXB18GALH | 5.6 | 6.3 |
| INDZ15A3 | 1.7 | 1.9 | Indoor | Slim duct(Drain pump internal) | ARXD04GALH | 1.1 | 1.3 |
| INDZ20A3 | 2.2 | 2.5 | Indoor | Slim duct(Drain pump internal) | ARXD07GALH | 2.2 | 2.8 |
| INDZ25A3 | 2.8 | 3.2 | Indoor | Slim duct(Drain pump internal) | ARXD09GALH | 2.8 | 3.2 |
| INDZ32A3 | 3.6 | 4.0 | Indoor | Slim duct(Drain pump internal) | ARXD12GALH | 3.6 | 4.0 |
| INDZ40A3 | 4.5 | 5.0 | Indoor | Slim duct(Drain pump internal) | ARXD14GALH | 4.5 | 5.0 |
| INDZ50A3 | 5.6 | 6.3 | Indoor | Slim duct(Drain pump internal) | ARXD18GALH | 5.6 | 6.3 |
| INDZ63A3 | 8.0 | 9.0 | Indoor | Slim duct(Drain pump internal) | ARXD24GALH | 7.1 | 8.0 |

Buttons: OK, Cancel

Настройка за замяна на модела (1/4)

С тази настройка може да се регистрира моделът, който след това ще се замени

Model replacement setting

Table name
Replacement table - 01

Search Mode

Search Clear

What model (before replacement)

Replace with (after replacement)

Indoor

New

delete

| Model | RC C (kW) | RC H (kW) | Unit | Type | Model | RC C (kW) | RC H (kW) |
|----------|-----------|-----------|--------|------------------|------------|-----------|-----------|
| INDZ15A | 1.7 | 1.9 | Indoor | Compact cassette | AUXB04GALH | 1.1 | 1.3 |
| INDZ20A | 2.2 | 2.5 | Indoor | Compact cassette | AUXB07GALH | 2.2 | 2.8 |
| INDZ25A | 2.8 | 3.2 | Indoor | Compact cassette | AUXB09GALH | 2.8 | 3.2 |
| INDZ32A | 3.6 | 4.0 | Indoor | | | | |
| INDZ40A | 4.5 | 5.0 | Indoor | | | | |
| INDZ50A | 5.6 | 6.3 | Indoor | | | | |
| INDZ15A3 | 1.7 | 1.9 | Indoor | | | | |
| INDZ20A3 | 2.2 | 2.5 | Indoor | | | | |
| INDZ25A3 | 2.8 | 3.2 | Indoor | | | | |
| INDZ32A3 | 3.6 | 4.0 | Indoor | | | | |
| INDZ40A3 | 4.5 | 5.0 | Indoor | | | | |
| INDZ50A3 | 5.6 | 6.3 | Indoor | | | | |
| INDZ63A3 | 8.0 | 9.0 | Indoor | | | | |

Model-information

Indoor

Type
Compact cassette

| Image | Name | Capa C (kW) | Capa H (kW) | Airflow (l/s) | Sp (Pa) | Sound (dB) | WxHxD (mm) | Weight (kg) | Pip (mm) |
|-------|------------|-------------|-------------|----------------|---------|------------|-------------|-------------|----------|
| | AUXB04GALH | 1.1 | 1.3 | 97.2/125/147.2 | | 25/30/34 | 245x570x570 | 14.50 | 6.35x |
| | AUXB04GBLH | 1.1 | 1.3 | 97.2/125/147.2 | | 21/28/34 | 245x570x570 | 14.50 | 6.35x |
| | AUXB07GALH | 2.2 | 2.8 | 97.2/125/147.2 | | | | | |
| | AUXB09GALH | 2.8 | 3.2 | 97.2/125/147.2 | | | | | |
| | AUXB12GALH | 3.6 | 4.1 | 108.3/147.2 | | | | | |
| | AUXB14GALH | 4.5 | 5.0 | 108.3/161.3 | | | | | |
| | AUXB18GALH | 5.6 | 6.3 | 111.1/161.3 | | | | | |
| | AUXB24GALH | 7.1 | 8.0 | 125/230.5 | | | | | |

Unit

Type

Model

RC C

RC H

| | | | | |
|--------|--------------------------------|------------|-----|-----|
| Indoor | Compact cassette | AUXB04GALH | 1.1 | 1.3 |
| Indoor | Compact cassette | AUXB07GALH | 2.2 | 2.8 |
| Indoor | Compact cassette | AUXB09GALH | 2.8 | 3.2 |
| Indoor | Compact cassette | AUXB12GALH | 3.6 | 4.1 |
| Indoor | Compact cassette | AUXB14GALH | 4.5 | 5.0 |
| Indoor | Compact cassette | AUXB18GALH | 5.6 | 6.3 |
| Indoor | Slim duct(Drain pump internal) | ARXD04GALH | 1.1 | 1.3 |
| Indoor | Slim duct(Drain pump internal) | ARXD07GALH | 2.2 | 2.8 |
| Indoor | Slim duct(Drain pump internal) | ARXD09GALH | 2.8 | 3.2 |
| Indoor | Slim duct(Drain pump internal) | ARXD12GALH | 3.6 | 4.0 |
| Indoor | Slim duct(Drain pump internal) | ARXD14GALH | 4.5 | 5.0 |
| Indoor | Slim duct(Drain pump internal) | ARXD18GALH | 5.6 | 6.3 |
| Indoor | Slim duct(Drain pump internal) | ARXD24GALH | 7.1 | 8.0 |

How to edit model: Select a model on above list and click a row on list of

(1) Добави нов

(2) Въведете "Текст"

(3) Изберете "вътрешно или външно"

(4) Изберете "Информация"

(5) Изберете тип

(6) Изберете тяло

Настройка за замяна на модела (2/4)

Model replacement setting

Table name: Replacement table - 01 maintenance Import Export

Search Model: Search Clear

Edit Unit: Indoor

What model (before replacement) Replace with (after replacement)

| Model | RC C (kW) | RC H (kW) | Unit | Type | Model | RC C (kW) | RC H (kW) |
|---------|-----------|-----------|------|--------------------------------|------------|-----------|-----------|
| NDZ15A | 1.7 | 1.9 | door | Compact cassette | AUXB04GALH | 1.1 | 1.3 |
| NDZ20A | 2.2 | 2.5 | door | Compact cassette | AUXB07GALH | 2.2 | 2.8 |
| NDZ25A | 2.8 | 3.2 | door | Compact cassette | AUXB09GALH | 2.8 | 3.2 |
| NDZ32A | 3.6 | 4.0 | door | Compact cassette | AUXB12GALH | 3.6 | 4.1 |
| NDZ40A | 4.5 | 5.0 | door | Compact cassette | AUXB14GALH | 4.5 | 5.0 |
| NDZ50A | 5.6 | 6.3 | door | Compact cassette | AUXB18GALH | 5.6 | 6.3 |
| NDZ15A3 | 1.7 | 1.9 | door | Slim duct(Drain pump internal) | ARXD04GALH | 1.1 | 1.3 |
| NDZ20A3 | 2.2 | 2.5 | door | Slim duct(Drain pump internal) | ARXD07GALH | 2.2 | 2.8 |
| NDZ25A3 | 2.8 | 3.2 | door | Slim duct(Drain pump internal) | ARXD09GALH | 2.8 | 3.2 |
| NDZ32A3 | 3.6 | 4.0 | door | Slim duct(Drain pump internal) | ARXD12GALH | 3.6 | 4.0 |
| NDZ40A3 | 4.5 | 5.0 | door | Slim duct(Drain pump internal) | ARXD14GALH | 4.5 | 5.0 |
| NDZ50A3 | 5.6 | 6.3 | door | Slim duct(Drain pump internal) | ARXD18GALH | 5.6 | 6.3 |
| NDZ63A3 | 8.0 | 9.0 | door | Slim duct(Drain pump internal) | ARXD24GALH | 7.1 | 8.0 |

Record New delete

OK Cancel

С тази настройка може да се регистрира моделът, който след това ще се замени.

А. Модел, който ще се смени (опционален текст)

В. Модел след замяна (само моделът на фирмата)

*Изберете от списъка на екрана

Настройка за замяна на модела (3/4)

Model replacement setting

Table name: Replacement table - 01

maintenance Import Export

Search Model: Search Clear

What model (before replacement) Replace with (after replacement)

| Model | RC C (kW) | RC H (kW) | Unit | Type | Model | RC C (kW) | RC H (kW) |
|----------|-----------|-----------|--------|--------------------------------|------------|-----------|-----------|
| INDZ15A | 1.7 | 1.9 | Indoor | Compact cassette | AUXB04GALH | 1.1 | 1.3 |
| INDZ20A | 2.2 | 2.5 | Indoor | Compact cassette | AUXB07GALH | 2.2 | 2.8 |
| INDZ25A | 2.8 | 3.2 | Indoor | Compact cassette | AUXB09GALH | | |
| INDZ32A | 3.6 | 4.0 | Indoor | Compact cassette | AUXB12GALH | | |
| INDZ40A | 4.5 | 5.0 | Indoor | Compact cassette | AUXB14GALH | | |
| INDZ50A | 5.6 | 6.3 | Indoor | Compact cassette | AUXB18GALH | | |
| INDZ15A3 | 1.7 | 1.9 | Indoor | Slim duct(Drain pump internal) | ARXD04GALH | | |
| INDZ20A3 | 2.2 | 2.5 | Indoor | Slim duct(Drain pump internal) | ARXD07GALH | 2.2 | 2.8 |
| INDZ25A3 | 2.8 | 3.2 | Indoor | Slim duct(Drain pump internal) | ARXD09GALH | 2.8 | 3.2 |
| INDZ32A3 | 3.6 | 4.0 | Indoor | Slim duct(Drain pump internal) | ARXD12GALH | 3.6 | 4.0 |
| INDZ40A3 | 4.5 | 5.0 | Indoor | Slim duct(Drain pump internal) | ARXD14GALH | 4.5 | 5.0 |
| INDZ50A3 | 5.6 | 6.3 | Indoor | Slim duct(Drain pump internal) | ARXD18GALH | 5.6 | 6.3 |
| INDZ63A3 | 8.0 | 9.0 | Indoor | Slim duct(Drain pump internal) | ARXD24GALH | 7.1 | 8.0 |

Record: New

Изберете “поддръжка”
Могат да се изберат няколко таблици за замяна

Отваря “Настройка за замяна на модела”

Изберете “Нов”

“Преименувай”

Изберете “Изтрий”

Изберете
“Сортирай”

List maintenance

New rename delete

Table name

Replacement table-01

Replacement table-02

OK Cancel

(1) Поддръжка (пр. Добавяне и изтриване на таблица)

The screenshot shows the 'List maintenance' dialog box on the left and a comparison table on the right.

List maintenance dialog box:

- Buttons: New, rename, delete
- Table name: Replacement table - 01, Replacement table - 02, Replacement table - 03
- Buttons: Up, Down
- Buttons: OK, Cancel

Comparison table:

| What model | Replace with |
|------------|--------------|
| AWH01 | AWH01 |
| AWH02 | AWH02 |
| AWH03 | AWH03 |
| AWH04 | AWH04 |
| AWH05 | AWH05 |
| AWH06 | AWH06 |
| AWH07 | AWH07 |
| AWH08 | AWH08 |
| AWH09 | AWH09 |
| AWH10 | AWH10 |
| AWH11 | AWH11 |
| AWH12 | AWH12 |
| AWH13 | AWH13 |
| AWH14 | AWH14 |
| AWH15 | AWH15 |
| AWH16 | AWH16 |
| AWH17 | AWH17 |
| AWH18 | AWH18 |
| AWH19 | AWH19 |
| AWH20 | AWH20 |
| AWH21 | AWH21 |
| AWH22 | AWH22 |
| AWH23 | AWH23 |
| AWH24 | AWH24 |
| AWH25 | AWH25 |
| AWH26 | AWH26 |
| AWH27 | AWH27 |
| AWH28 | AWH28 |
| AWH29 | AWH29 |
| AWH30 | AWH30 |
| AWH31 | AWH31 |
| AWH32 | AWH32 |
| AWH33 | AWH33 |
| AWH34 | AWH34 |
| AWH35 | AWH35 |
| AWH36 | AWH36 |
| AWH37 | AWH37 |
| AWH38 | AWH38 |
| AWH39 | AWH39 |
| AWH40 | AWH40 |
| AWH41 | AWH41 |
| AWH42 | AWH42 |
| AWH43 | AWH43 |
| AWH44 | AWH44 |
| AWH45 | AWH45 |
| AWH46 | AWH46 |
| AWH47 | AWH47 |
| AWH48 | AWH48 |
| AWH49 | AWH49 |
| AWH50 | AWH50 |
| AWH51 | AWH51 |
| AWH52 | AWH52 |
| AWH53 | AWH53 |
| AWH54 | AWH54 |
| AWH55 | AWH55 |
| AWH56 | AWH56 |
| AWH57 | AWH57 |
| AWH58 | AWH58 |
| AWH59 | AWH59 |
| AWH60 | AWH60 |
| AWH61 | AWH61 |
| AWH62 | AWH62 |
| AWH63 | AWH63 |
| AWH64 | AWH64 |
| AWH65 | AWH65 |
| AWH66 | AWH66 |
| AWH67 | AWH67 |
| AWH68 | AWH68 |
| AWH69 | AWH69 |
| AWH70 | AWH70 |
| AWH71 | AWH71 |
| AWH72 | AWH72 |
| AWH73 | AWH73 |
| AWH74 | AWH74 |
| AWH75 | AWH75 |
| AWH76 | AWH76 |
| AWH77 | AWH77 |
| AWH78 | AWH78 |
| AWH79 | AWH79 |
| AWH80 | AWH80 |
| AWH81 | AWH81 |
| AWH82 | AWH82 |
| AWH83 | AWH83 |
| AWH84 | AWH84 |
| AWH85 | AWH85 |
| AWH86 | AWH86 |
| AWH87 | AWH87 |
| AWH88 | AWH88 |
| AWH89 | AWH89 |
| AWH90 | AWH90 |
| AWH91 | AWH91 |
| AWH92 | AWH92 |
| AWH93 | AWH93 |
| AWH94 | AWH94 |
| AWH95 | AWH95 |
| AWH96 | AWH96 |
| AWH97 | AWH97 |
| AWH98 | AWH98 |
| AWH99 | AWH99 |
| AWH100 | AWH100 |

(2) Импорт/експорт на всяка таблица

- (1) Могат да се изберат няколко таблици за замяна.
(2) Данните за всяка таблица могат да се импортират/експортират.

Изберете “Обновяване”

Изберете “Лиценз”

Изберете “История на версиите”

Изберете “Ръчно обновяване”

Design Simulator

File Preference Tool Help Update Download DXF Mode setting

New Open

Design Simulator

AIRSTAGE

Design Simulator

Design Simulator Ver.3.1.3.02

DB Ver.2017.05.25

Design Simulator_Installation Ver.1.0.0.0

Design Simulator_Installation DB Ver.2017.06.01

Copyright (c) 2010 Fujitsu General Limited. All rights reserved.

General global site

Animation explanation

Client Update : 2013/10/10

Licence

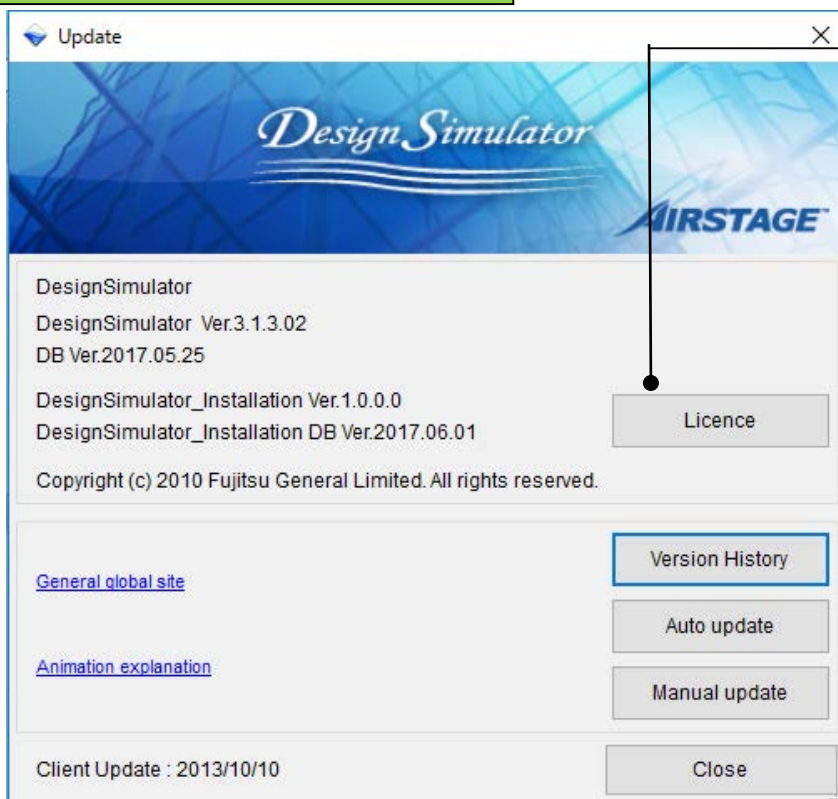
Version History

Auto update

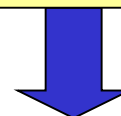
Manual update

Close

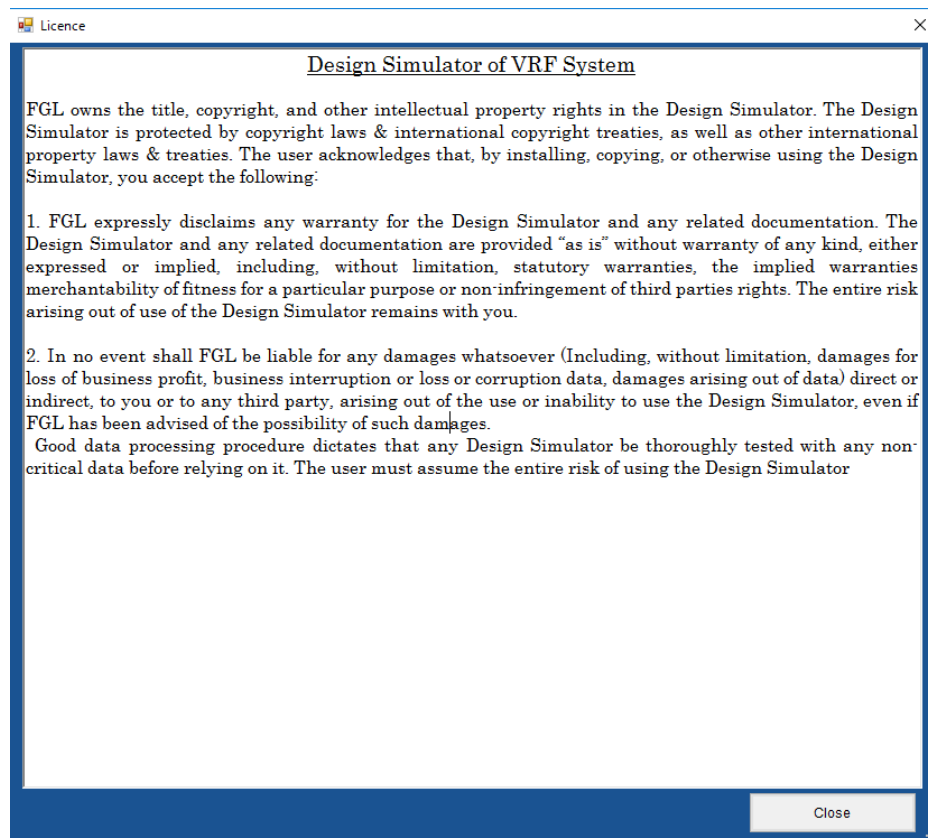
Обновяване (1/3)



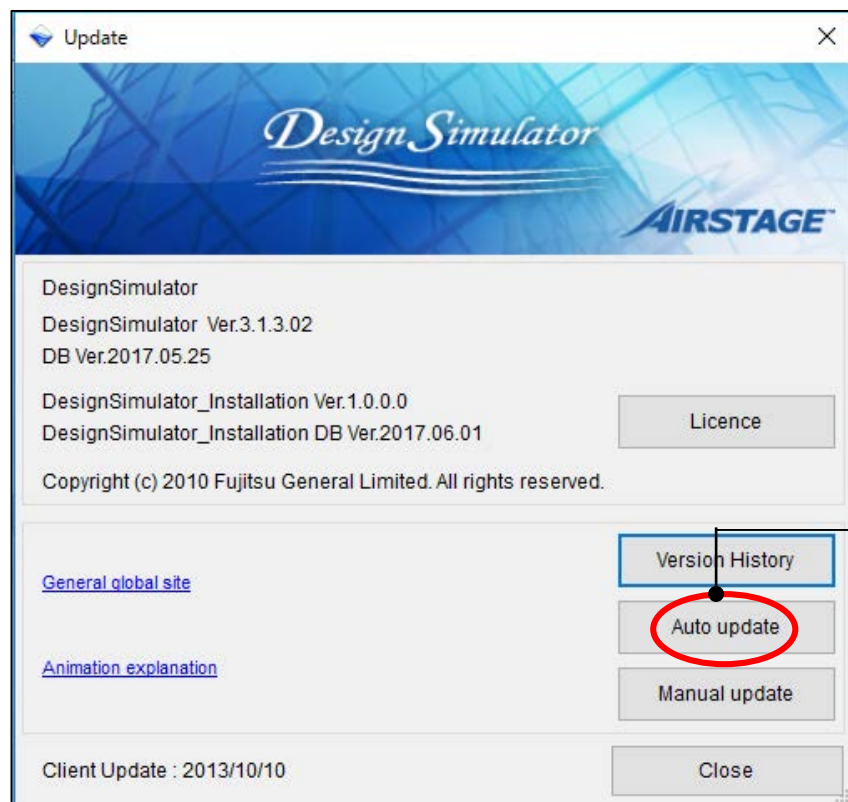
Изберете "Лиценз"



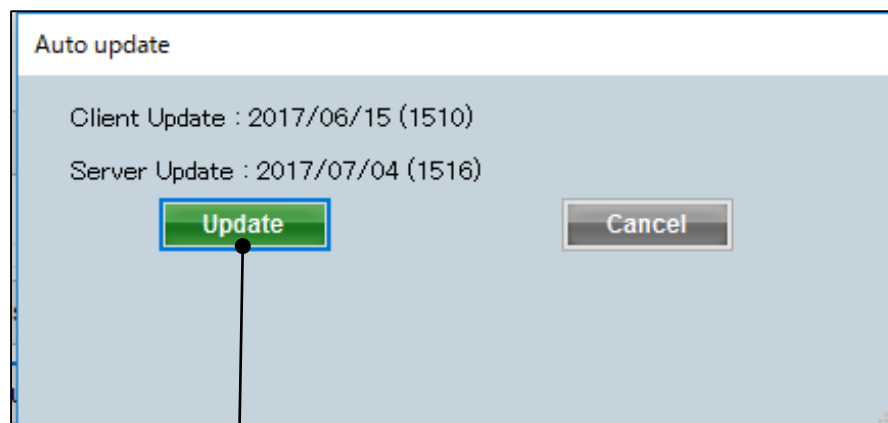
Отваря "Дизайн симулатор за VRF система"



Обновяване (2/3)

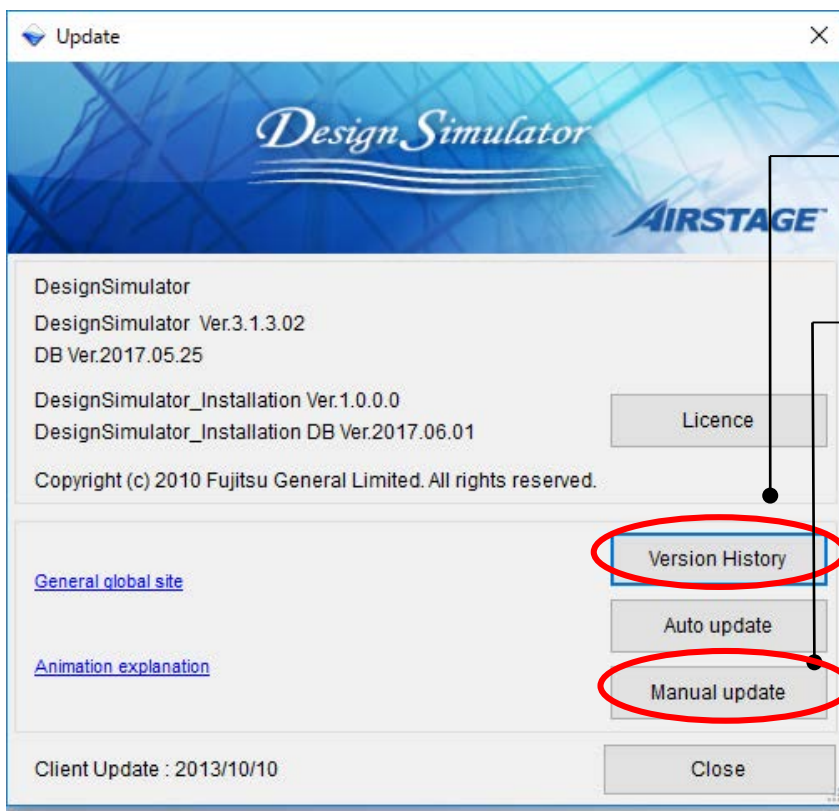


Изберете “Автоматично обновяване”



С натискането на бутона версията на софтуера се обновява

Обновяване (3/3)

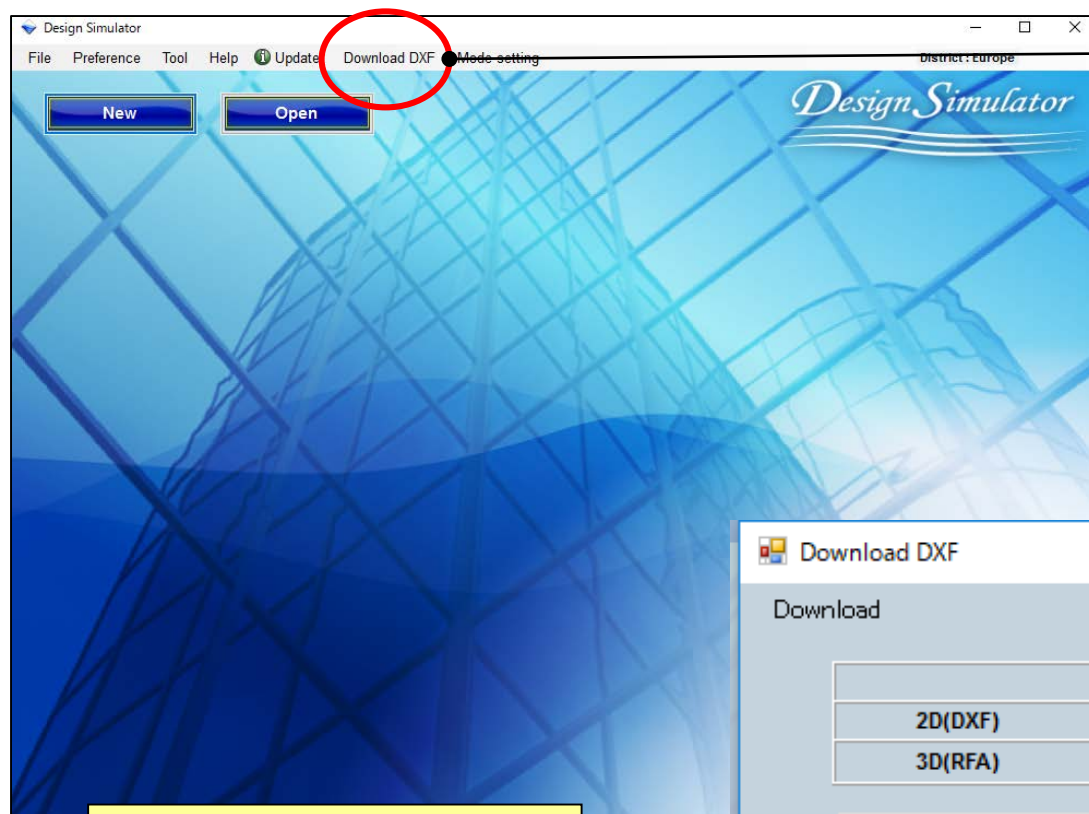


Изберете “История на версиите”

Изберете “Ръчно обновяване”



“История на версиите”
Показва информация за последната версия

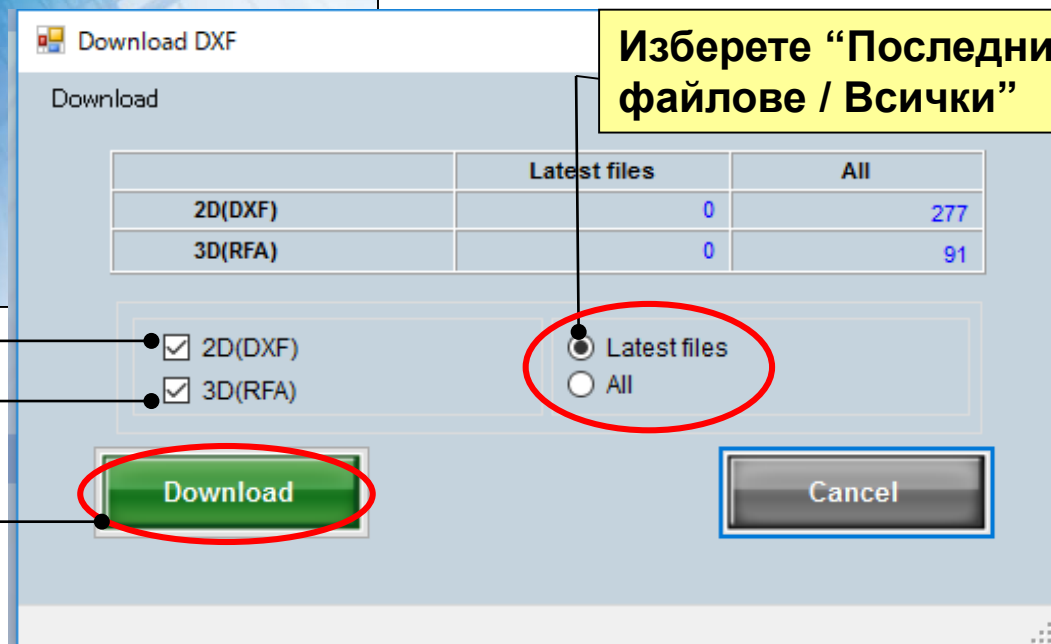


Изберете “Изтегли DXF”

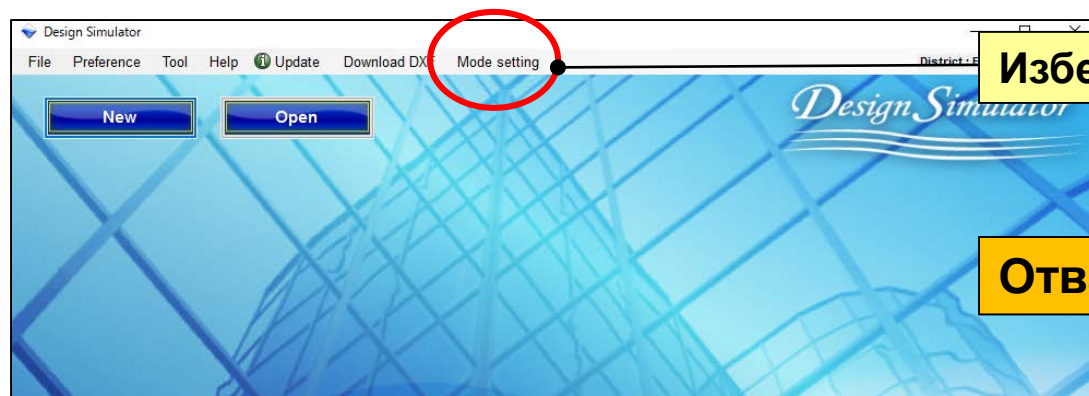
Изберете “2D (DXF)”

Изберете “3D (RFA)”

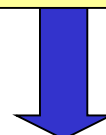
Изберете “Изтегли”



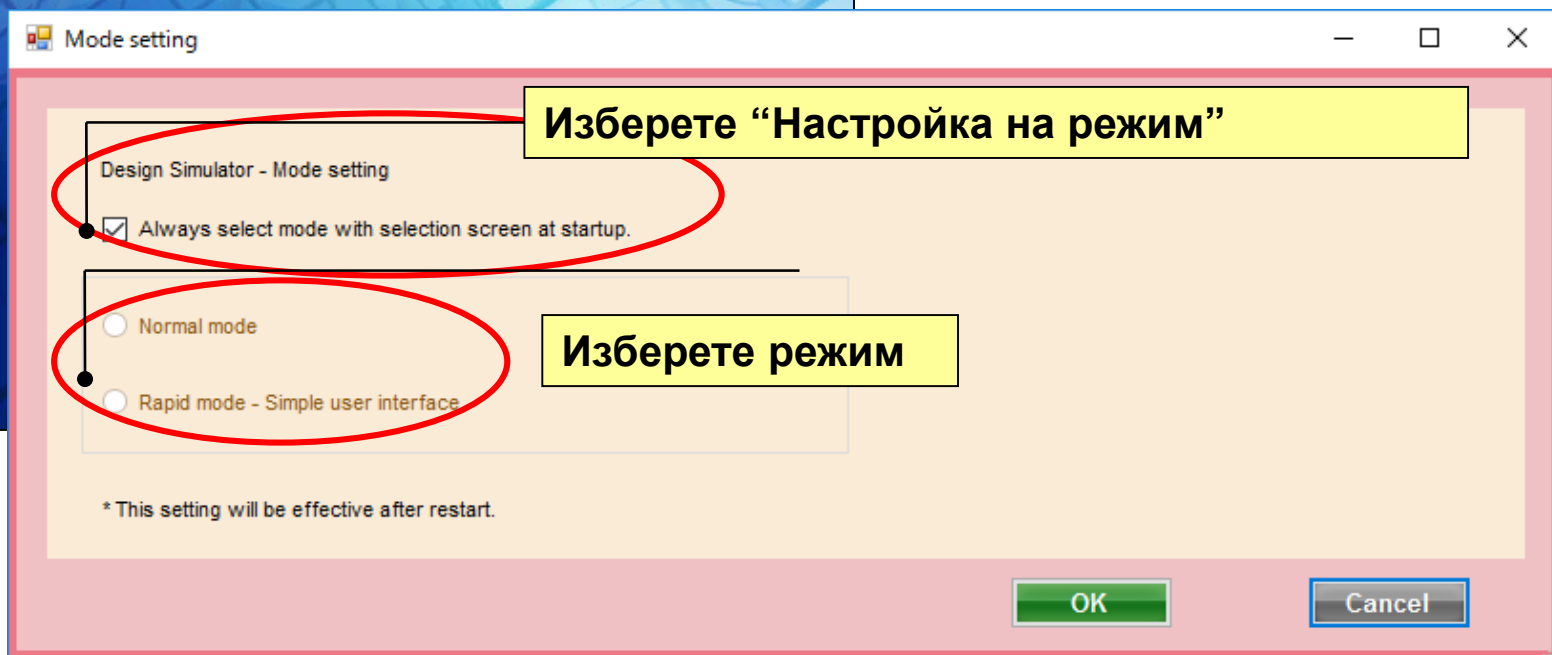
Изберете “Последни файлове / Всички”



Изберете “Настройка на режим”



Отваря “Настройка на режим”



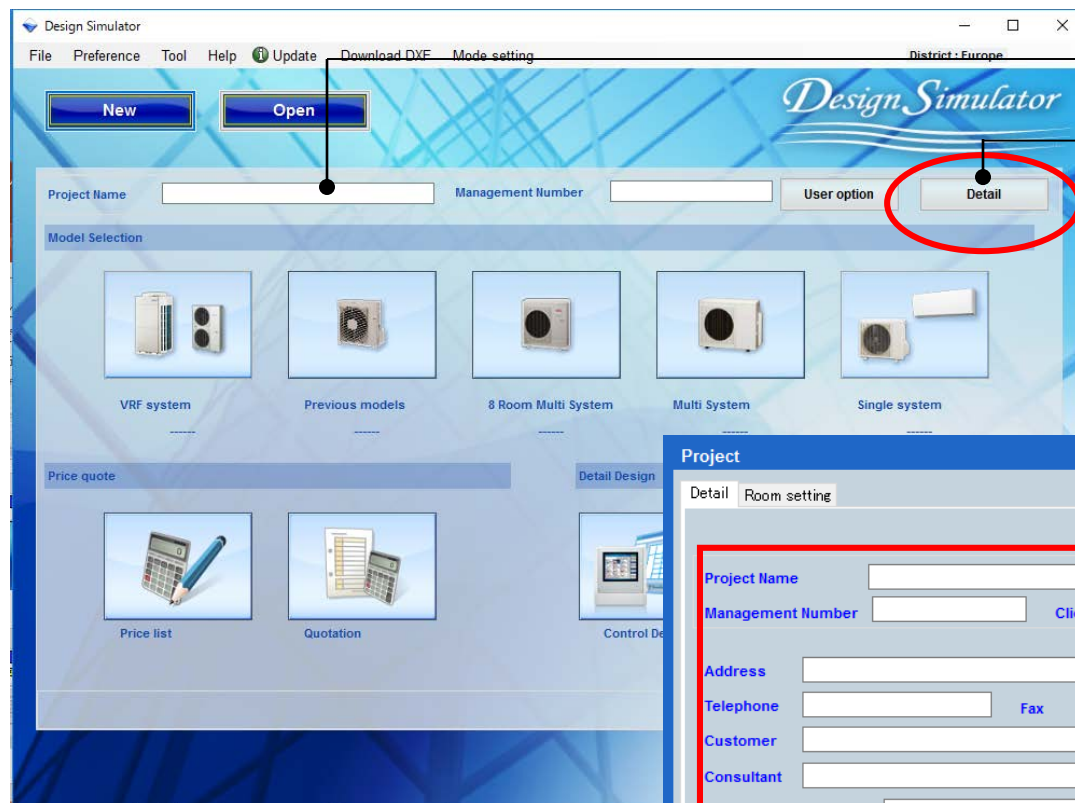
Изберете “Настройка на режим”

Изберете режим

Могат да се изберат нормален или опростен режим

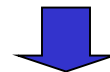
Детайлни настройки

Дизайн симулатор



Въведете име на проекта

Изберете “Детайли”



Отваря информация за проекта

The screenshot shows the 'Project' dialog box, which is a form for entering project information. It has a title bar 'Project' and two tabs: 'Detail' (selected) and 'Room setting'. The form contains several input fields and a dropdown menu: 'Project Name', 'Management Number', 'Client Name', 'Building' (dropdown), 'Address', 'Telephone', 'Fax', 'e-Mail', 'Customer', 'Installer', 'Consultant', 'Construct', 'Date of installation', 'Commissioning start', 'Note' (text area), 'Your name', 'Your company', and 'E-mail address'. At the bottom, there are 'Cancel' and 'OK' buttons. A red rectangle highlights the entire form area.

Настройка на помещението

Изберете етаж

Добавете/Премахнете етаж
Настройки на етажа

Настройка на елемента

Project

Detail Room setting

Floor type Multi Floor

Floor All

Floor setting

Item setting

| | Floor | Room | Length (m) | Width (m) | Height (m) | Rq TC (kW) | Rq SC (kW) | Rq HC (kW) | Tmp C (DBT) | Tmp C (RH %) | Tmp H (C) | Air space / person (m3) |
|----|--------|----------------|------------|-----------|------------|------------|------------|------------|-------------|--------------|-----------|-------------------------|
| 1 | Floor1 | 1F_Office | 10.0 | 10.0 | 5.0 | 10 | 5 | 15 | 27 | 43.4 | 20 | 8 |
| 2 | Floor1 | 2F_Conference1 | 20.0 | 20.0 | 8.0 | 20 | 10 | 30 | 27 | 43.4 | 20 | 22 |
| 3 | Floor1 | 2F_Conference2 | 20.0 | 20.0 | 8.0 | 20 | 10 | 30 | 27 | 43.4 | 20 | 22 |
| 4 | Floor1 | 1F_Office2_1 | 10.0 | 10.0 | 5.0 | 10 | 5 | 15 | 27 | 43.4 | 20 | 8 |
| 5 | Floor1 | 1F_Office2_2 | 10.0 | 10.0 | 5.0 | 10 | 5 | 15 | 27 | 43.4 | 20 | 8 |
| 6 | Floor1 | 1F_Office2_3 | 10.0 | 10.0 | 5.0 | 10 | 5 | 15 | 27 | 43.4 | 20 | 8 |
| 7 | Floor1 | 1F_Office2_4 | 10.0 | 10.0 | 5.0 | 10 | 5 | 15 | 27 | 43.4 | 20 | 8 |
| 8 | Floor1 | 1F_Office2_5 | 10.0 | 10.0 | 5.0 | 10 | 5 | 15 | 27 | 43.4 | 20 | 8 |
| 9 | Floor1 | 1F_Office2_6 | 10.0 | 10.0 | 5.0 | 10 | 5 | 15 | 27 | 43.4 | 20 | 8 |
| 10 | Floor1 | 1F_Office2_7 | 10.0 | 10.0 | 5.0 | 10 | 5 | 15 | 27 | 43.4 | 20 | 8 |

Задава вътр.тяло в стая

Премахнете етажа

Collective setting

Remove

Cancel OK

1. Задайте брой етажи и помещения в сградата
2. Задайте вътрешно тяло във всяка стая

1. Задайте брой етажи и помещения в сградата

2. Задайте вътрешно тяло във всяка стая

Задайте брой етажи в сградата

Project

Detail Room setting

Floor type Multi Floor

Floor All

Floor setting

Item setting

| Floor | Room | Length (m) | Width (m) | Height (m) | Rq TC (kW) | Rq SC (kW) | Rq HC (kW) | Tmp C (DBT) | Tmp C (RH %) | Tmp H (C) | Air space / person (m3) |
|-----------|----------------|------------|-----------|------------|------------|------------|------------|-------------|--------------|-----------|-------------------------|
| 1 Floor1 | 1F_Office | 10.0 | 10.0 | | | | | | | | |
| 2 Floor1 | 2F_Conference1 | 20.0 | 20.0 | | | | | | | | |
| 3 Floor1 | 2F_Conference2 | 20.0 | 20.0 | | | | | | | | |
| 4 Floor1 | 1F_Office2_1 | 10.0 | 10.0 | | | | | | | | |
| 5 Floor1 | 1F_Office2_2 | 10.0 | 10.0 | | | | | | | | |
| 6 Floor1 | 1F_Office2_3 | 10.0 | 10.0 | | | | | | | | |
| 7 Floor1 | 1F_Office2_4 | 10.0 | 10.0 | | | | | | | | |
| 8 Floor1 | 1F_Office2_5 | 10.0 | 10.0 | | | | | | | | |
| 9 Floor1 | 1F_Office2_6 | 10.0 | 10.0 | | | | | | | | |
| 10 Floor1 | 1F_Office2_7 | 10.0 | 10.0 | | | | | | | | |

Collective setting

Floor setting

1 Floor1

2 Floor2

Add floor

Remove

Cancel

OK

Изберете “Настройки на етажа”

Отваря екран за настройки на етажа”

Може да се добави или премахне етаж

Може да се добави Етаж2

Добави етаж

Премахни етаж

Project

Detail Room setting

Floor type Multi Floor

Floor Floor2

Floor setting

Item setting

| Floor | Room | Length (m) | Width (m) | Height (m) | Rq TC (kW) | Rq SC (kW) | Rq HC (kW) | Tmp C (DBT) | Tmp C (RH %) | Tmp H (C) | Air space / person (m3) |
|-------|------|------------|-----------|------------|------------|------------|------------|-------------|--------------|-----------|-------------------------|
|-------|------|------------|-----------|------------|------------|------------|------------|-------------|--------------|-----------|-------------------------|

Задайте вътрешно тяло във всяка стая

Project

Detail Room setting

Floor type Multi Floor

Floor Floor2

Floor setting Item setting

| Floor | Room | Length (m) | Width (m) | Height (m) | Rq TC (kW) | Rq SC (kW) | Rq HC (kW) | Tmp C (DBT) | Tmp C (RH %) | Tmp H (C) | Air space / person (m3) |
|-------|------|------------|-----------|------------|------------|------------|------------|-------------|--------------|-----------|-------------------------|
|-------|------|------------|-----------|------------|------------|------------|------------|-------------|--------------|-----------|-------------------------|

Collective setting

Add room Remove

Cancel OK

Добави стая към етаж

Махни стая или етаж

Изберете “Добави стая”

Добавя/премахва стая

Стаята може да се добави към етаж2

Project

Detail Room setting

Floor type Multi Floor

Floor Floor2

Floor setting Item setting

| | Floor | Room | Length (m) | Width (m) | Height (m) | Rq TC (kW) | Rq SC (kW) | Rq HC (kW) | Tmp C (DBT) | Tmp C (RH %) | Tmp H (C) | Air space / person (m3) |
|---|--------|----------------|------------|-----------|------------|------------|------------|------------|-------------|--------------|-----------|-------------------------|
| 1 | Floor2 | 2F_Conference1 | 20 | 20 | 8 | 20 | 10 | 30 | 27 | 43.4 | 20 | 22 |
| 2 | Floor2 | 2F_Conference2 | 20 | 20 | 8 | 20 | 10 | 30 | 27 | 43.4 | 20 | 22 |

Изберете “Настройка на елемента”

Отваря екран за настройка на елемента

Показаният елемент може да се настрои

Маркирайте показателите, които искате да се виждат

Маркираните показатели се виждат

Элемент

Мярка

**Може да се
промени за
въздушно
пространство/
обитател**

**Т.11-18 могат да се
настроят
произволно от
потребителя**

Project

Detail Room setting

Floor type Multi Floor

Floor All

Floor setting

Item setting

| | Floor | Room | Length (m) | Width (m) | Height (m) | Rq TC (kW) | Rq SC (kW) | Rq HC (kW) | Temp C (DBT) | Temp C (RH %) | Temp H (C) | Air space / person (m3) |
|----|--------|----------------|------------|-----------|------------|------------|------------|------------|--------------|---------------|------------|-------------------------|
| 1 | Floor1 | 1F_Office | 10.0 | 10.0 | 5.0 | 10 | 5 | 15 | 27 | 43.4 | 20 | 8 |
| 2 | Floor1 | 2F_Conference1 | 20.0 | 20.0 | 8.0 | | | | | | | |
| 3 | Floor1 | 2F_Conference2 | 20.0 | 20.0 | 8.0 | | | | | | | |
| 4 | Floor1 | 1F_Office2_1 | 10.0 | 10.0 | 5.0 | | | | | | | |
| 5 | Floor1 | 1F_Office2_2 | 10.0 | 10.0 | 5.0 | | | | | | | |
| 6 | Floor1 | 1F_Office2_3 | 10.0 | 10.0 | 5.0 | | | | | | | |
| 7 | Floor1 | | | | | | | | | | | |
| 8 | Floor1 | | | | | | | | | | | |
| 9 | Floor1 | | | | | | | | | | | |
| 10 | Floor1 | | | | | | | | | | | |

Collective setting

Item

| | | |
|---|--------|----|
| 1 | Length | m |
| 2 | Width | m |
| 3 | Height | m |
| 4 | Rq TC | kW |
| 5 | Rq SC | kW |
| 6 | Rq HC | kW |

| | Item | Unit | Use |
|----|--------------------|----------|-------------------------------------|
| 1 | Length | m | <input checked="" type="checkbox"/> |
| 2 | Width | m | <input checked="" type="checkbox"/> |
| 3 | Height | m | <input checked="" type="checkbox"/> |
| 4 | Rq TC | kW | <input checked="" type="checkbox"/> |
| 5 | Rq SC | kW | <input checked="" type="checkbox"/> |
| 6 | Rq HC | kW | <input checked="" type="checkbox"/> |
| 7 | Tmp C | DBT/RH % | <input checked="" type="checkbox"/> |
| 8 | Tmp C | DBT/RH % | <input checked="" type="checkbox"/> |
| 9 | Tmp H | C | <input checked="" type="checkbox"/> |
| 10 | Air space / person | m3 | <input checked="" type="checkbox"/> |
| 11 | person | person | <input checked="" type="checkbox"/> |
| 12 | Remarks2 | | <input type="checkbox"/> |
| 13 | Remarks3 | | <input type="checkbox"/> |

Project

Detail

Room setting

Floor type

Multi Floor

Floor

All

Floor setting

Item setting

| | Floor | Room | Length (m) | Width (m) | Height (m) | Rq TC (kW) | Rq SC (kW) | Rq HC (kW) | Tmp C (DBT) | Tmp C (RH %) | Tmp H (C) | Air space / person (m3) |
|---|--------|----------------|---------------|--------------|---------------|---------------|---------------|---------------|----------------|-----------------|--------------|-------------------------------|
| 1 | Floor1 | 1F_Office | 10.0 | 10.0 | 5.0 | 10 | 5 | 15 | 27 | 43.4 | 20 | 8 |
| 2 | Floor1 | 2F_Conference1 | 20.0 | 20.0 | 8.0 | 20 | 10 | 30 | 27 | 43.4 | 20 | 22 |
| 3 | Floor1 | 2F_Conference2 | 20.0 | 20.0 | 8.0 | 20 | 10 | 30 | 27 | 43.4 | 20 | 22 |

1. Задайте брой етажи и помещения в сградата

2. Задайте вътрешно тяло във всяка стая

Настройка на помещението

Project

Detail: Room setting

Floor type: Multi Floor

Floor: Floor2

Floor setting

Item setting

| | Floor | Room | Length (m) | Width (m) | Height (m) | Rq TC (kW) | Rq SC (kW) | Rq HC (kW) | Tmp C (DBT) | Tmp C (RH %) | Tmp H (C) | Air space / person (m3) |
|---|--------|----------------|------------|-----------|------------|------------|------------|------------|-------------|--------------|-----------|-------------------------|
| 1 | Floor2 | 2F_Conference1 | 20 | 20 | 8 | 20 | 10 | 30 | 27 | 43.4 | 20 | 22 |
| 2 | Floor2 | 2F_Conference2 | 20 | 20 | 8 | 20 | 10 | 30 | 27 | 43.4 | 20 | 22 |

Collective setting

Add

Can

Изберете “Обща настройка”

Отваря екрана за колективна настройка

Избор етаж

Избор серия

Collective setting

Floor: Floor2

Series: All

The indoor unit which is already set as a room is also indicated.

| Select | Series | Name | Comments | Model | Capa C (kW) | Capa H (kW) | Outdoor |
|--------------------------|--------|-------|----------------|----------|-------------|-------------|---------|
| <input type="checkbox"/> | V2 | Indr2 | 2F_Conference1 | Cassette | | | |
| <input type="checkbox"/> | V2 | Indr3 | 2F_Conference2 | Ceiling | | | |

Release Indoors

Select Indoors

Selected room information

| Floor | Room | Length (m) | Width (m) | Height (m) | Rq TC (kW) | Rq SC (kW) | Rq HC (kW) | Tmp C (DBT/RH %) | Tmp C (DBT/RH %) | Tmp H (C) | Air space / person (m3) |
|--------|----------------|------------|-----------|------------|------------|------------|------------|------------------|------------------|-----------|-------------------------|
| Floor2 | 2F_Conference1 | 20.0 | 20.0 | 8.0 | 20 | 10 | 30 | 27 | 43.4 | 20 | 22 |

Connected indoor

| Series | Name | Model | Tmp C (C/%) | Tmp H (C) | Discharge Tmp C (C/WBT) | Outside Tmp C (C/%) | Discharge Tmp H (C) | Outside Tmp H (C) | TC (kW) | SC (kW) | HC (kW) |
|--------|------|-------|-------------|-----------|-------------------------|---------------------|---------------------|-------------------|---------|---------|---------|
|--------|------|-------|-------------|-----------|-------------------------|---------------------|---------------------|-------------------|---------|---------|---------|

Close

Премахнете вътр.тяло от стаята

Вече настроено вътрешно тяло не се показва

Задайте вътр.тяло в стая

Детайлни настройки

Дизайн симулатор

Задайте вътрешно тяло във всяка стая

Collective setting

Floor: Floor1 Series: V2 ☐ The indoor unit which is already set as a room is also indicated.

| Select | Series | Name | Comments | Model | Capa C (kW) | Capa H (kW) | Outdoor |
|-------------------------------------|--------|--------|----------------|------------|-------------|-------------|---------|
| <input checked="" type="checkbox"/> | V2 | Indr1 | 1F_Office1 | AUXB09GALH | 2.3 | 3.2 | Otdr1 |
| <input type="checkbox"/> | V2 | Indr2 | 2F_Conference1 | ARXD04GALH | 1.1 | 1.3 | Otdr1 |
| <input type="checkbox"/> | V2 | Indr3 | 2F_Conference2 | ABHA24GATH | 7.1 | 8.0 | Otdr1 |
| <input type="checkbox"/> | V2 | Indr4 | 1F_Office2_1 | AUXB14GALH | 4.5 | 5.0 | Otdr1 |
| <input type="checkbox"/> | V2 | Indr5 | 1F_Office2_2 | AUXB14GALH | 4.5 | 5.0 | Otdr1 |
| <input type="checkbox"/> | V2 | Indr6 | 1F_Office2_3 | AUXB14GALH | 4.5 | 5.0 | Otdr1 |
| <input type="checkbox"/> | V2 | Indr7 | 1F_Office2_4 | AUXB14GALH | 4.5 | 5.0 | Otdr1 |
| <input type="checkbox"/> | V2 | Indr8 | 1F_Office2_5 | AUXB14GALH | 4.5 | 5.0 | Otdr1 |
| <input type="checkbox"/> | V2 | Indr9 | 1F_Office2_6 | AUXB14GALH | 4.5 | 5.0 | Otdr1 |
| <input type="checkbox"/> | V2 | Indr10 | 1F_Office2_7 | AUXB14GALH | 4.5 | 5.0 | Otdr1 |

Release Indoors Select Indoors

Selected room information

| Floor | Room | Length (m) | Width (m) | Height (m) | Rq TC (kW) | Rq SC (kW) |
|--------|-----------|------------|-----------|------------|------------|------------|
| Floor1 | 1F_Office | 10.0 | 10.0 | 5.0 | 10 | 5 |

Connected indoor

| Series | Name | Model | Tmp C (C/%) | Tmp H (C) | Discharge Tmp C (C/WBT) | Outside Tmp C (C/%) |
|--------|------|-------|-------------|-----------|-------------------------|---------------------|
|--------|------|-------|-------------|-----------|-------------------------|---------------------|

Изберете стая

Изберете тяло, което искате да настроите

“Избери вътрешните”

Настроеното вътрешно тяло се показва за всяка стая

Collective setting

Floor: Floor1 Series: V2 ☐ The indoor unit which is already set as a room is also indicated.

| Select | Series | Name | Comments | Model | Capa C (kW) | Capa H (kW) | Outdoor |
|--------------------------|--------|--------|----------------|------------|-------------|-------------|---------|
| <input type="checkbox"/> | V2 | Indr2 | 2F_Conference1 | ARXD04GALH | 1.1 | 1.3 | Otdr1 |
| <input type="checkbox"/> | V2 | Indr3 | 2F_Conference2 | ABHA24GATH | 7.1 | 8.0 | Otdr1 |
| <input type="checkbox"/> | V2 | Indr4 | 1F_Office2_1 | AUXB14GALH | 4.5 | 5.0 | Otdr1 |
| <input type="checkbox"/> | V2 | Indr5 | 1F_Office2_2 | AUXB14GALH | 4.5 | 5.0 | Otdr1 |
| <input type="checkbox"/> | V2 | Indr6 | 1F_Office2_3 | AUXB14GALH | 4.5 | 5.0 | Otdr1 |
| <input type="checkbox"/> | V2 | Indr7 | 1F_Office2_4 | AUXB14GALH | 4.5 | 5.0 | Otdr1 |
| <input type="checkbox"/> | V2 | Indr8 | 1F_Office2_5 | AUXB14GALH | 4.5 | 5.0 | Otdr1 |
| <input type="checkbox"/> | V2 | Indr9 | 1F_Office2_6 | AUXB14GALH | 4.5 | 5.0 | Otdr1 |
| <input type="checkbox"/> | V2 | Indr10 | 1F_Office2_7 | AUXB14GALH | 4.5 | 5.0 | Otdr1 |

Release Indoors Select Indoors

Selected room information

| Floor | Room | Length (m) | Width (m) | Height (m) | Rq TC (kW) | Rq SC (kW) | Rq HC (kW) | Tmp C (DBT/RH %) | Tmp C (DBT/RH %) | Tmp H (C) | Air space / person (m3) |
|--------|-----------|------------|-----------|------------|------------|------------|------------|------------------|------------------|-----------|-------------------------|
| Floor1 | 1F_Office | 10.0 | 10.0 | 5.0 | 10 | 5 | 15 | 27 | 43.4 | 20 | 8 |

Connected indoor

| Series | Name | Model | Tmp C (C/%) | Tmp H (C) | Discharge Tmp C (C/WBT) | Outside Tmp C (C/%) | Discharge Tmp H (C) | Outside Tmp H (C) | TC (kW) | SC (kW) | HC (kW) |
|--------|-------|------------|-------------|-----------|-------------------------|---------------------|---------------------|-------------------|---------|---------|---------|
| 2 | Indr1 | AUXB09GALH | 27.0/43.4 | 20.0 | - | - | - | - | 2.7 | 2.0 | 3.2 |

Close

Премахни вътр.тяло настроено за всяка стая

[illegible]

Изберете стая

“Премахнете вътр.тяло”

**Вътрешното тяло
зададено за всяка стая
може да се премахне**

Collective setting

Floor

All

| Floor | Room |
|--------|----------------|
| Floor1 | 1F_Office |
| Floor1 | 2F_Conference1 |
| Floor1 | 2F_Conference2 |
| Floor1 | 1F_Office2_1 |
| Floor1 | 1F_Office2_2 |
| Floor1 | 1F_Office2_3 |
| Floor1 | 1F_Office2_4 |
| Floor1 | 1F_Office2_5 |
| Floor1 | 1F_Office2_6 |
| Floor1 | 1F_Office2_7 |

Release Indoors

Series

All

☐ The indoor unit which is already set as a room is also indicated.

| Select | Series | Name | Comments | Model | Capa C (kW) | Capa H (kW) | Outdoor |
|--------------------------|--------|--------|--------------|------------|-------------|-------------|---------|
| <input type="checkbox"/> | V2 | Indr10 | 1F_Office2_7 | AUXB14GALH | 4.5 | 5.0 | Otdr1 |

Select Indoors

Selected room information

| Floor | Room | Length (m) | Width (m) | Height (m) | Rq TC (kW) | Rq SC (kW) | Rq HC (kW) | Tmp C (DBT/RH %) | Tmp C (DBT/RH %) | Tmp H (C) | Air space / person (m3) |
|--------|--------------|------------|-----------|------------|------------|------------|------------|------------------|------------------|-----------|-------------------------|
| Floor1 | 1F_Office2_7 | 10.0 | 10.0 | 5.0 | 10 | 5 | 15 | 27 | 43.4 | 20 | 8 |

Connected indoor

| Series | Name | Model | Tmp C (C/%) | Tmp H (C) | Discharge Tmp C (C/WBT) | Outside Tmp C (C/%) | Discharge Tmp H (C) | Outside Tmp H (C) | TC (kW) | SC (kW) | HC (kW) |
|--------|------|-------|-------------|-----------|-------------------------|---------------------|---------------------|-------------------|---------|---------|---------|
|--------|------|-------|-------------|-----------|-------------------------|---------------------|---------------------|-------------------|---------|---------|---------|

Close